

**PROGRAMS OF STUDY (POS)**  
**Work Readiness Certification**  
**and Industry Credentials**

---

2014-2015 Academic Year  
High School Endorsements



# HISD Graduation Requirements

## **Endorsements – 26 Credits**

- Upon entering 9th grade, a student must indicate (in writing) an endorsement he/she intends to earn.
- Student must be allowed to choose a different endorsement at any time.

## **Performance Acknowledgments on Diploma and student transcript**

A student may earn a performance acknowledgment for any of the following:

1. For outstanding performance in dual credit courses (12 college hours, GPA of 3.0)
2. For outstanding performance in bilingual and bi-literacy (in two or more languages)
3. For outstanding performance on AP test score of 3+ or IB exam score of 4+
4. For outstanding performance on the PSAT, ACT-Plan, SAT, or ACT
5. For earning a nationally or internationally recognized business or industry certification or license (Government-required credential to practice a profession.)

## **Industry Certification**

An industry certification is a credential that validates the ability to perform certain basic tasks essential to a particular industry. These certifications are usually created by a particular company such as ACA (Adobe Certified Associate).

## **License**

A license is a Texas government issued certificate which indicates completion of a training program with a minimum number of hours and successful acquisition of basic skills essential for specific trades or professions. Examples would be a state issued Cosmetology license or a Licensed Pharmacy Technician Trainee.

## **Occupational Competency Assessment**

An occupational competency assessment is a technical skills assessment created by groups such as the A\*S\*K Business Institute, which argues that the student has mastered job-ready technical knowledge. For example the A\*S\*K Business Fundamentals test that indicates basic skills in Human Resources or NCCER Welding.

# Agriculture, Food, and Natural Resources



## Business and Industry

### Pathway: Animal Science

**Credential (certification): Certified Veterinary Assistant (CVA Level 1)**

Website: [www.tvma.org/Certifications/CVA](http://www.tvma.org/Certifications/CVA)

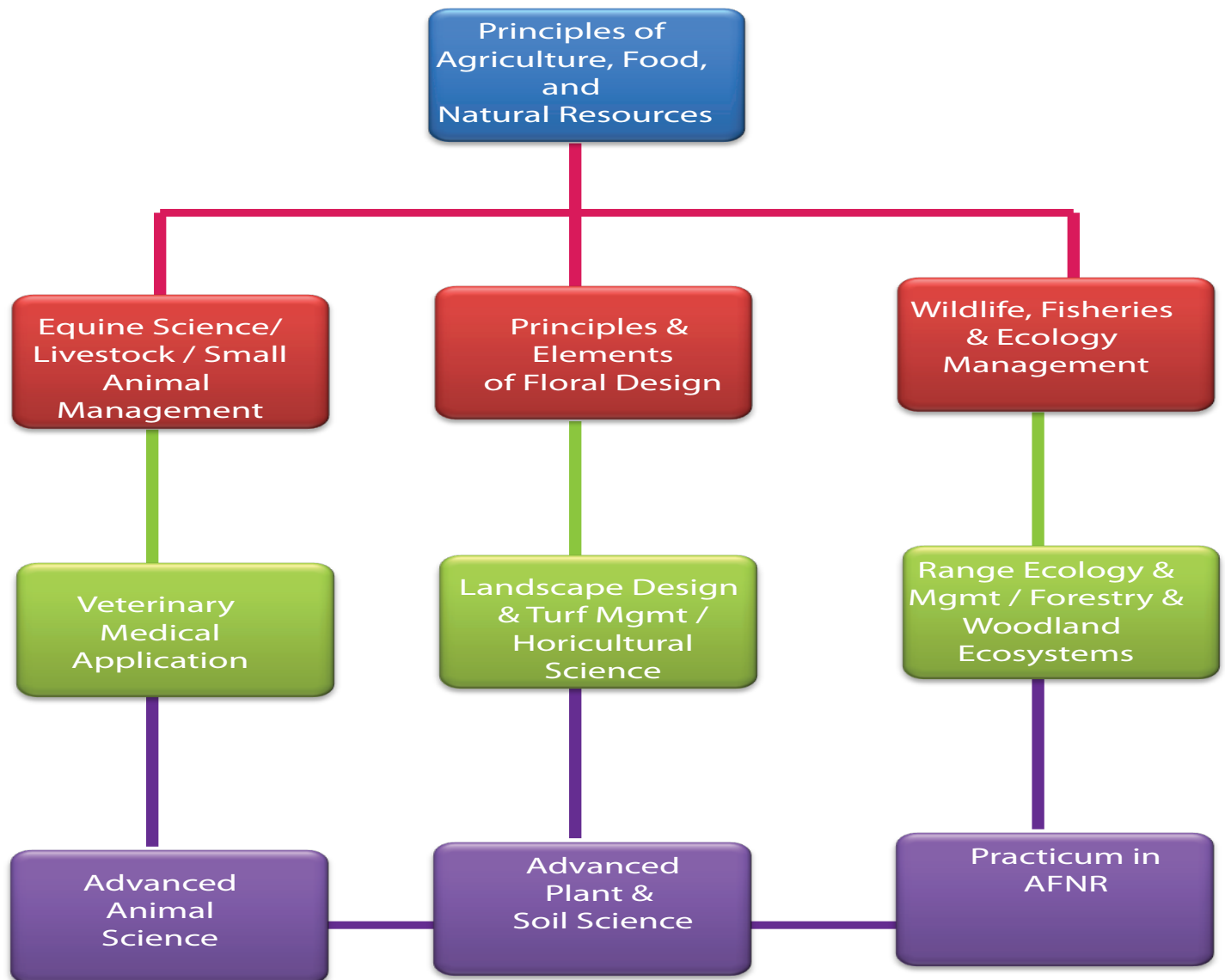
**Credential (license): Private Pesticide Applicator**

Website: [www.texasagriculture.gov/RegulatoryPrograms/Pesticides/PesticidePrivateApplicatorLicense.aspx](http://www.texasagriculture.gov/RegulatoryPrograms/Pesticides/PesticidePrivateApplicatorLicense.aspx)

### Pathway: Horticulture and Resource Management

**Credential (certification): Texas Floral Design - Level 1 Certification**

Website: [www.tsfa.org/floraldesigncertification.html](http://www.tsfa.org/floraldesigncertification.html)



# Architecture & Construction



## Business and Industry

### Pathway: Building Maintenance

**Credential (assessment): NCCER - Industrial Maintenance Mechanics**

Website: [www.nccer.org/industrial-maintenance-mechanic](http://www.nccer.org/industrial-maintenance-mechanic)

**Credential (assessment): NCCER - Green Environment**

Website: [www.nccer.org/green-curriculum](http://www.nccer.org/green-curriculum)

### Pathway: Construction Technology

**Credential (assessment): NCCER - Construction Technology**

Website: [www.nccer.org/construction-technology](http://www.nccer.org/construction-technology)

### Pathway: HVAC

**Credential (assessment): NCCER - HVAC, Level One**

Website: [www.nccer.org/hvac](http://www.nccer.org/hvac)

### Pathway: Plumbing

**Credential (assessment): NCCER - Plumbing, Level One**

Website: [www.nccer.org/plumbing](http://www.nccer.org/plumbing)

### Pathway: Structural Design and Engineering

**Credential (certification): AutoCAD Certified Associate**

Website: [www.certipoint.com/Portal/desktopdefault.aspx?tabid=667&roleid=101](http://www.certipoint.com/Portal/desktopdefault.aspx?tabid=667&roleid=101)

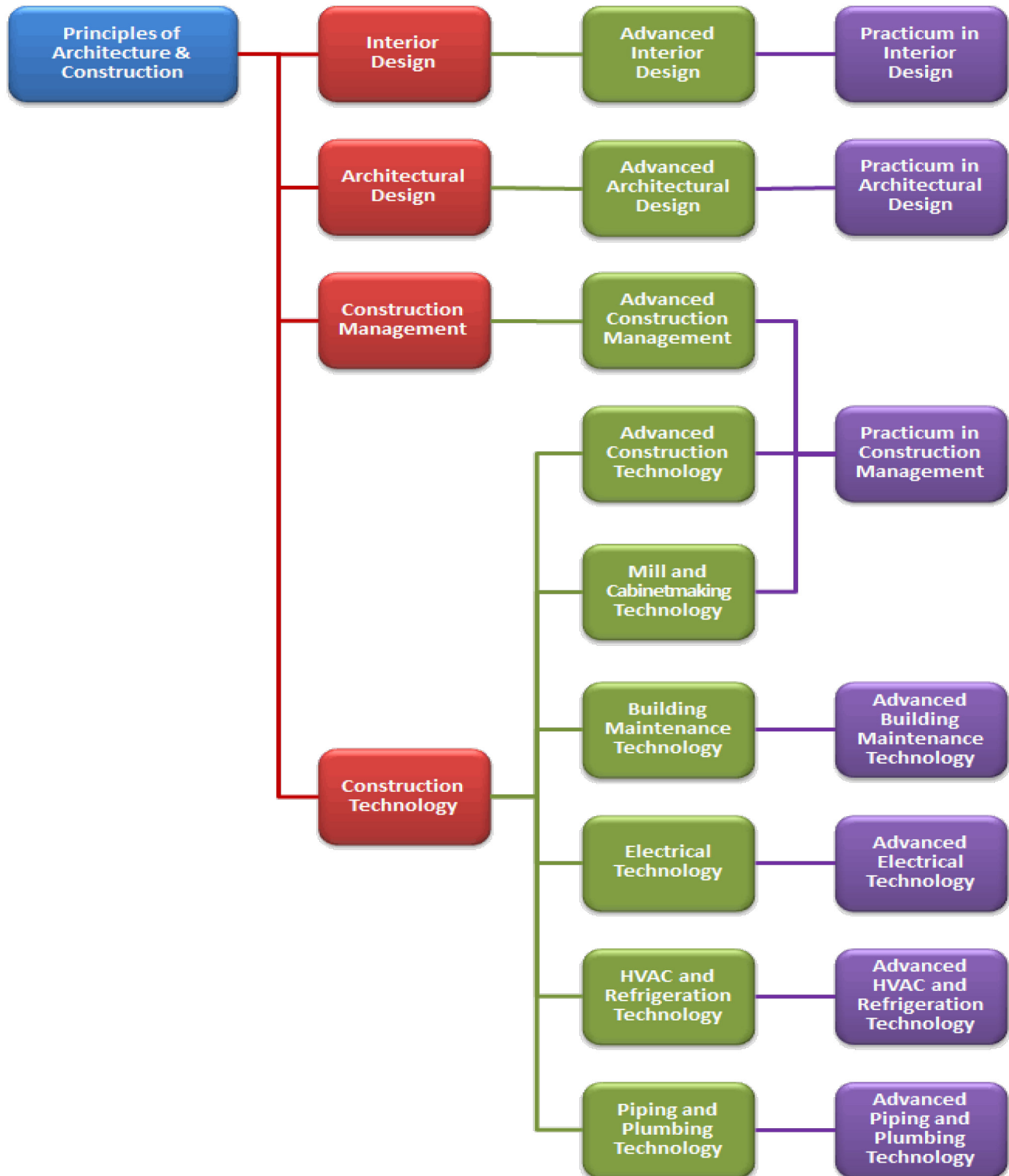
**Credential (certification): Certified SOLIDWORKS Associate (CSWA)**

Website: [www.solidworks.com/sw/education/certification-programs-cad-students.htm](http://www.solidworks.com/sw/education/certification-programs-cad-students.htm)

# Architecture & Construction



## Business and Industry



# Arts, A/V Production & Communication



## Business and Industry

**Pathway: Audio/Video Production**

**Pathway: Graphic Design and Production**

**Pathway: Printing and Imaging**

**Credential (certification): Adobe® Certified Associate (ACA) - Video Communication**

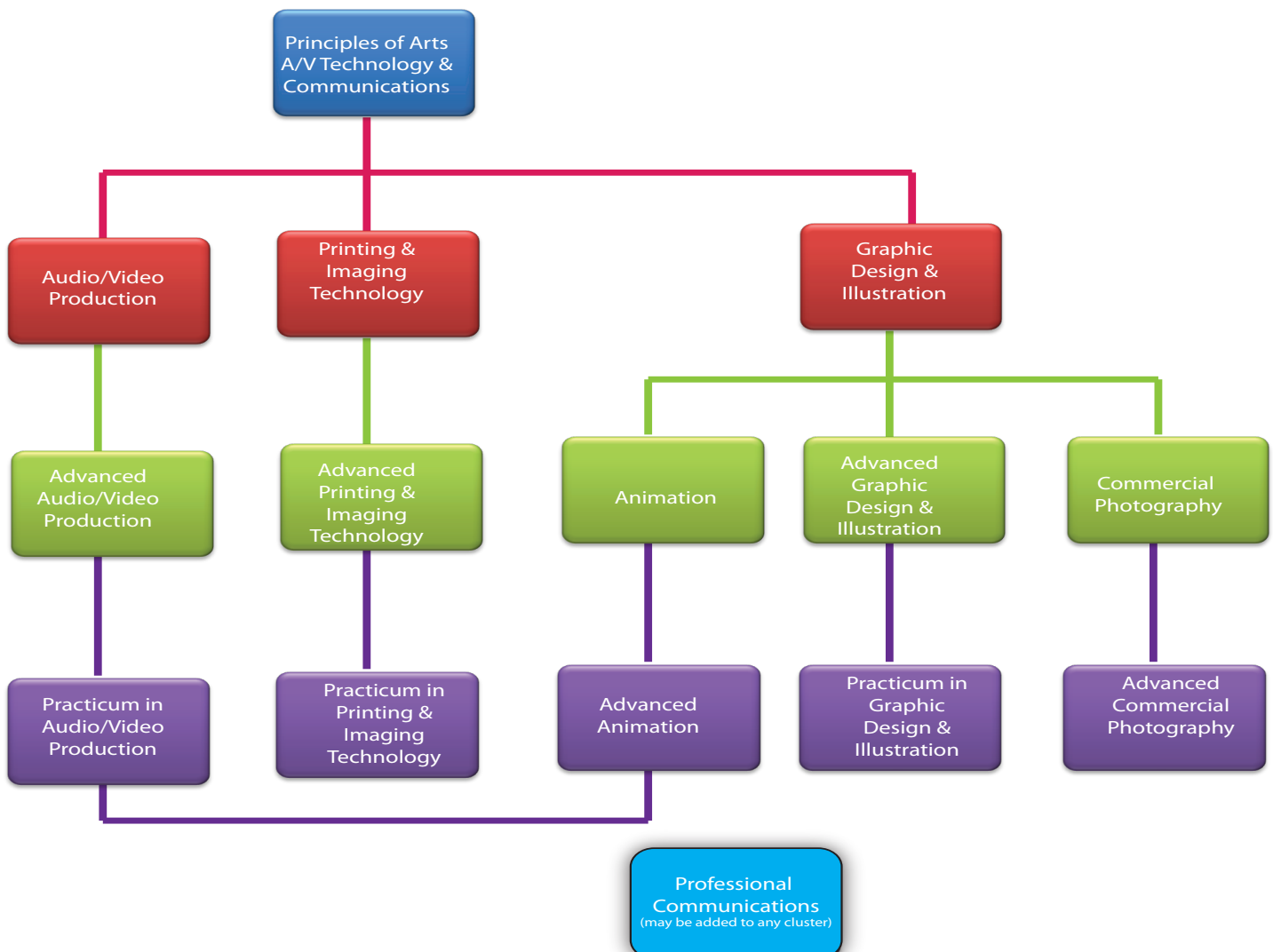
Website: [www.certipoint.com/Portal/desktopdefault.aspx?page=common/pagelibrary/adobe\\_PP.html](http://www.certipoint.com/Portal/desktopdefault.aspx?page=common/pagelibrary/adobe_PP.html)

**Credential (certification): Adobe® Certified Associate (ACA) - Visual Communication**

Website: [www.certipoint.com/Portal/desktopdefault.aspx?page=common/pagelibrary/adobe\\_PS.html](http://www.certipoint.com/Portal/desktopdefault.aspx?page=common/pagelibrary/adobe_PS.html)

**Credential (certification): Apple Final Cut Pro**

Website: <http://training.apple.com/certification/proapps>



# Business Management & Administration



## Business and Industry

### Pathway: Business Management

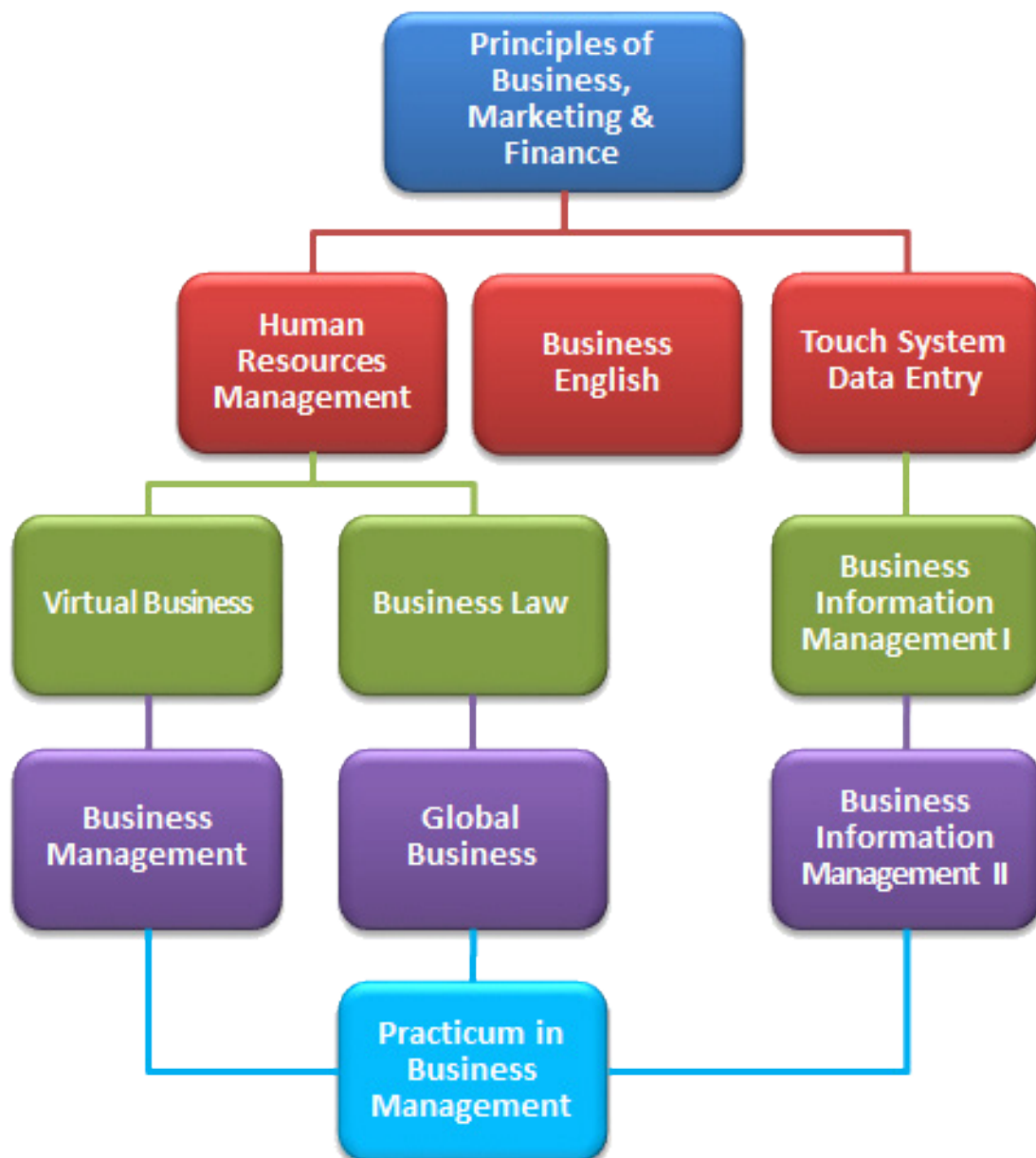
**Credential (certification):** Microsoft Office Certified Master

Website: [www.certipoint.com/Portal/desktopdefault.aspx?page=common/pagelibrary/mos\\_master.html](http://www.certipoint.com/Portal/desktopdefault.aspx?page=common/pagelibrary/mos_master.html)

### Pathway: Human Resources

**Credential (assessment):** A\*S\*K Business Fundamentals

Website: [www.askinstitute.org/index.php?option=com\\_content&view=category&layout=blog&id=37&Itemid=57](http://www.askinstitute.org/index.php?option=com_content&view=category&layout=blog&id=37&Itemid=57)



# Education & Training



## Public Services

### Pathway: Education and Training

**Credential (certification): Early Childhood Education Assessment & Certification**

Website: [www.aafcs.org/CredentialingCenter/ece.asp](http://www.aafcs.org/CredentialingCenter/ece.asp)

**Credential (certification): Pre-professional Certification in Education Fundamentals**

Website: [www.aafcs.org/CredentialingCenter/education\\_fundamentals.aspp](http://www.aafcs.org/CredentialingCenter/education_fundamentals.aspp)





# Finance



## Business and Industry

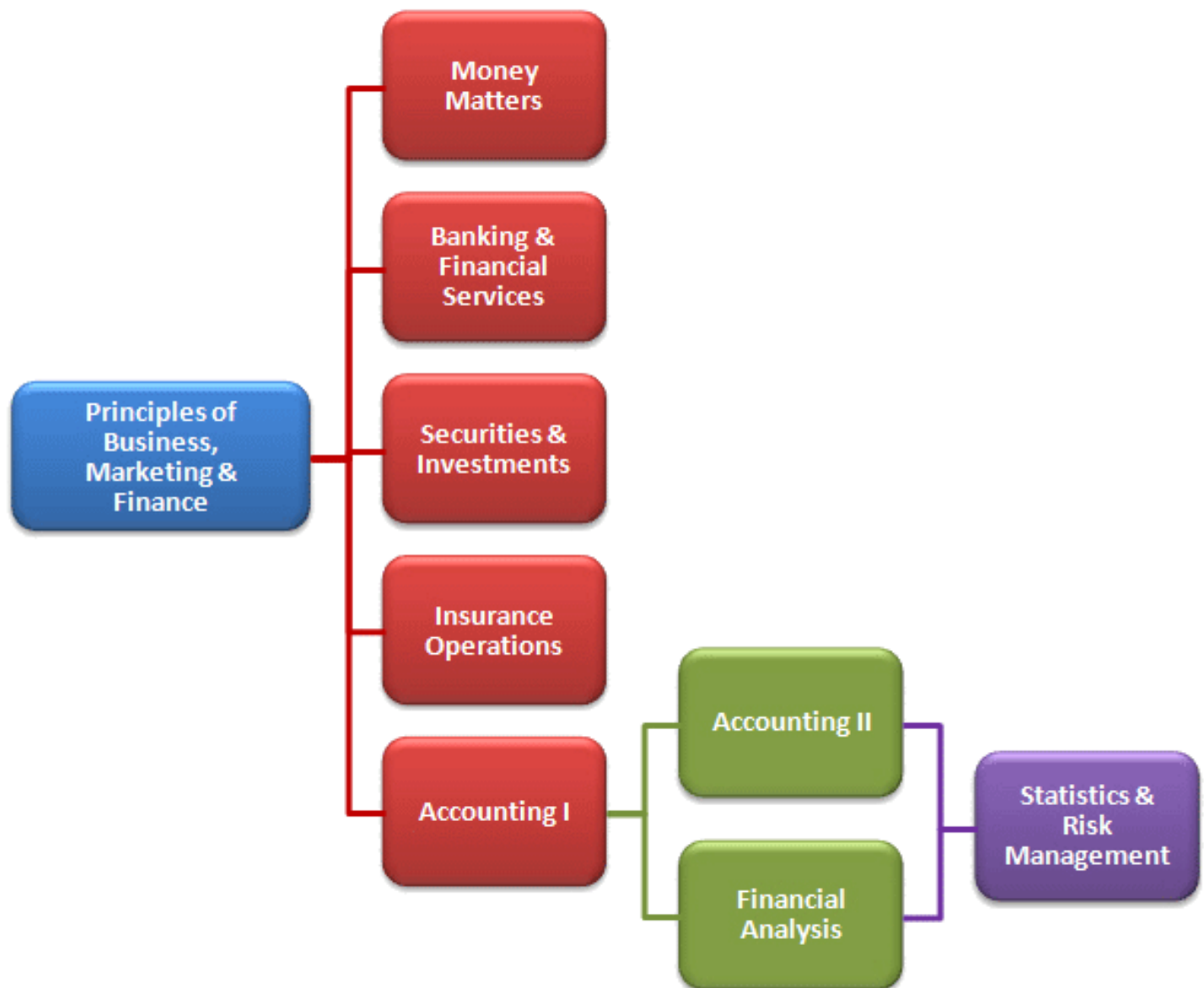
### Pathway: Banking and Securities

**Credential (assessment): A\*S\*K Finance**

Website: [www.askinstitute.org/index.php?option=com\\_content&view=category&layout=blog&id=37&Itemid=57](http://www.askinstitute.org/index.php?option=com_content&view=category&layout=blog&id=37&Itemid=57)

**Credential (certification): QuickBooks Certified User**

Website: [www.certipoint.com/Portal/desktopdefault.aspx?tabid=668&roleid=101](http://www.certipoint.com/Portal/desktopdefault.aspx?tabid=668&roleid=101)



# Health Science



## Public Services

### Pathway: Biomedical

### Pathway: Health Science

### Pathway: Radiology Technology

**Credential (certification): Certified Clinical Medical Assistant (CCMA)**

Website: [www.nhanow.com/clinical-medical-assistant.aspx](http://www.nhanow.com/clinical-medical-assistant.aspx)

**Credential (certification): Phlebotomy Technician Certification (CPT)**

Website: [www.nhanow.com/phlebotomy-technician.aspx](http://www.nhanow.com/phlebotomy-technician.aspx)

**Credential (certification): Certified Patient Care Technician/Assistant (CPCT/A)**

Website: [www.nhanow.com/patient-care-technician.aspx](http://www.nhanow.com/patient-care-technician.aspx)

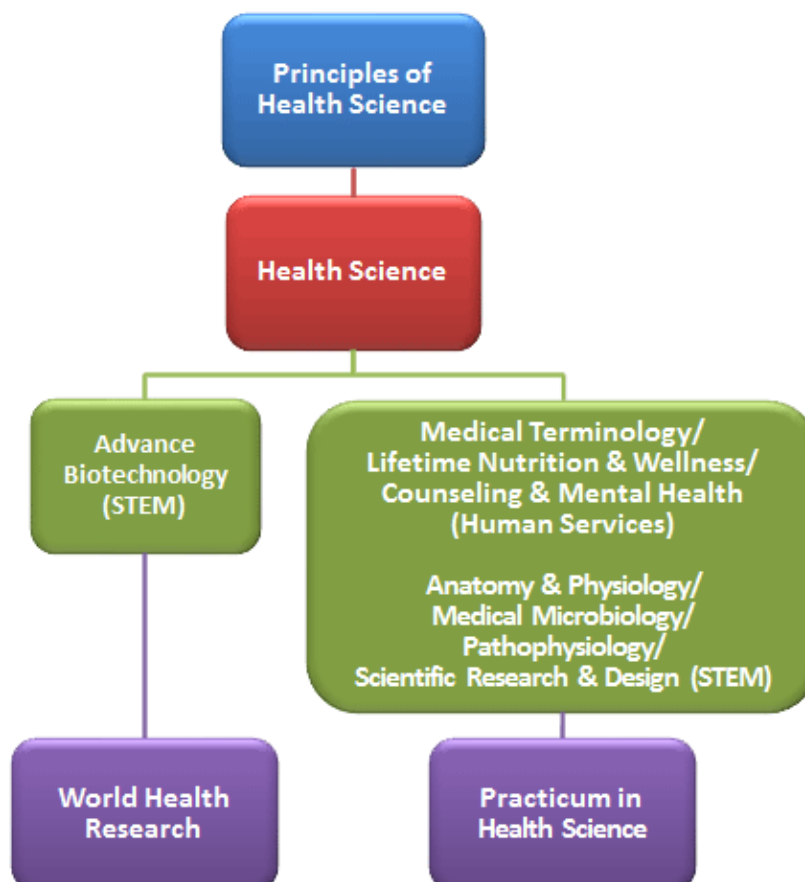
### Pathway: Pharmacy Technology

**Credential (assessment): Pharmacy Technician Trainee**

Website: [www.tsbp.state.tx.us/techtrainee.htm](http://www.tsbp.state.tx.us/techtrainee.htm)

**Credential (certification): Nurse Assisting Assessment**

Website: [www.workforcereadysystem.org/technical\\_areas.shtml](http://www.workforcereadysystem.org/technical_areas.shtml)



# Hospitality & Tourism



## Business and Industry

### Pathway: Culinary Arts

**Credential (assessment): ProStart® National Certificate of Achievement**

Website: [www.nraef.org/ProStart/ProStart-National-Certificate-of-Achievement-\(CoA\)](http://www.nraef.org/ProStart/ProStart-National-Certificate-of-Achievement-(CoA))

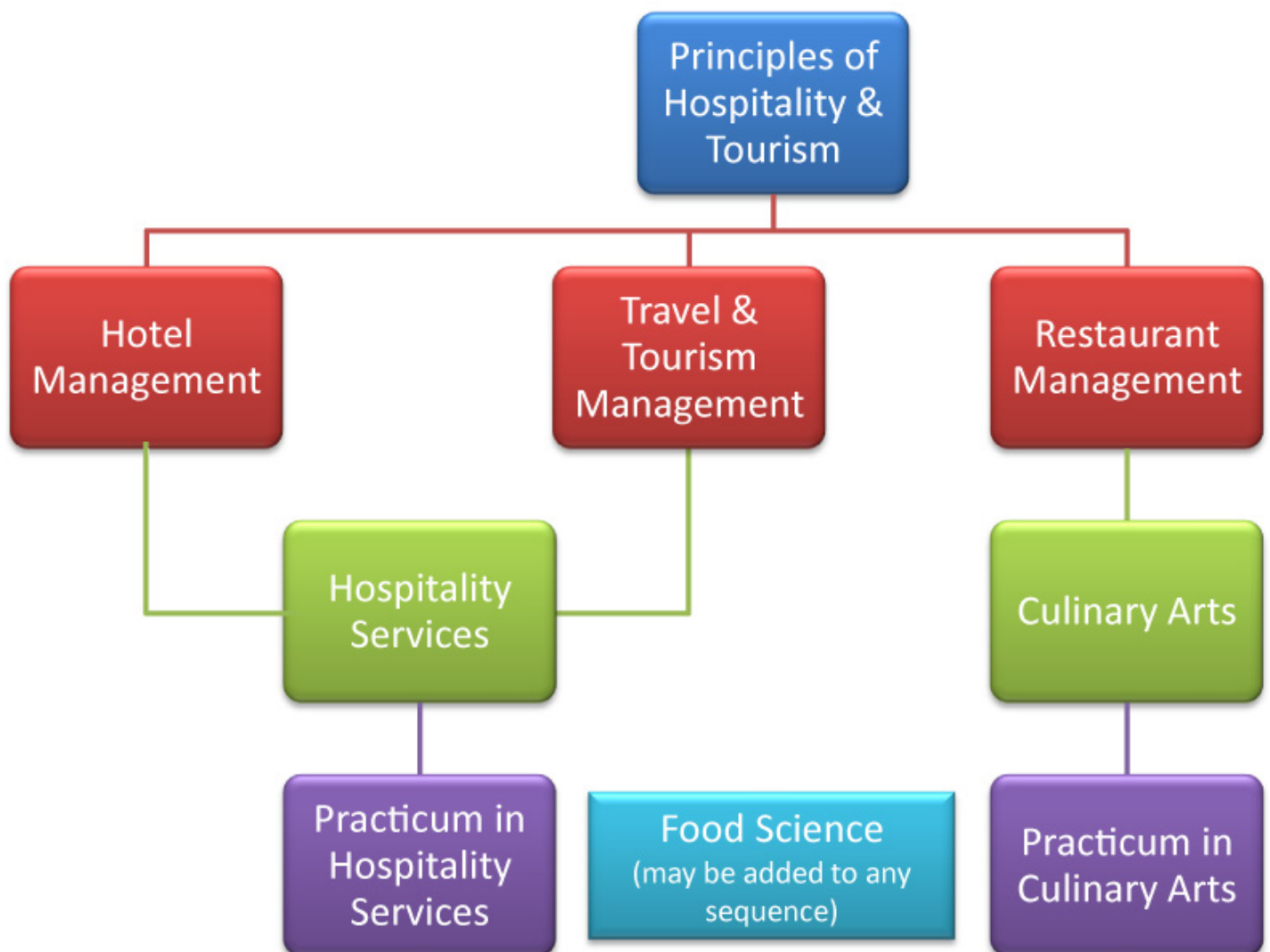
**Credential (assessment): Culinary Arts Assessment**

Website: [www.workforcereadysystem.org/technical\\_areas.shtml](http://www.workforcereadysystem.org/technical_areas.shtml)

### Pathway: Hotel and Restaurant Management

**Credential (assessment): ProStart® National Certificate of Achievement**

Website: [www.nraef.org/ProStart/ProStart-National-Certificate-of-Achievement-\(CoA\)](http://www.nraef.org/ProStart/ProStart-National-Certificate-of-Achievement-(CoA))



# Human Services



## Business and Industry

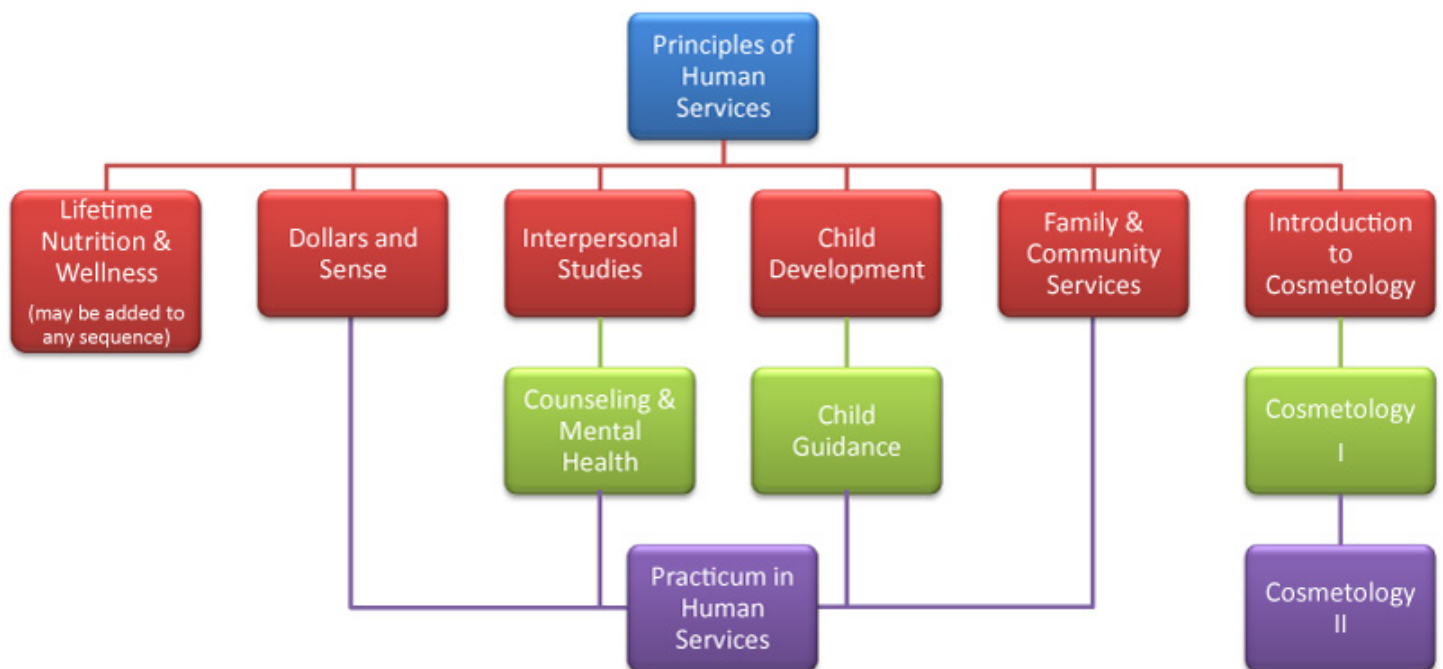
### Pathway: Cosmetology

**Credential (license): Cosmetology - Operator License**

Website: [www.tdlr.texas.gov/cosmet/cosmet.htm](http://www.tdlr.texas.gov/cosmet/cosmet.htm)

**Credential (assessment): Cosmetology Assessment**

Website: [www.workforcereadysystem.org/technical\\_areas.shtml](http://www.workforcereadysystem.org/technical_areas.shtml)



# Information Technology



## Business and Industry

### Pathway: Computer Maintenance

**Credential (certification): CompTIA Strata**

Website: [www.certipoint.com/Portal/desktopdefault.aspx?tabid=670&roleid=101](http://www.certipoint.com/Portal/desktopdefault.aspx?tabid=670&roleid=101)

**Credential (certification): CompTIA A+**

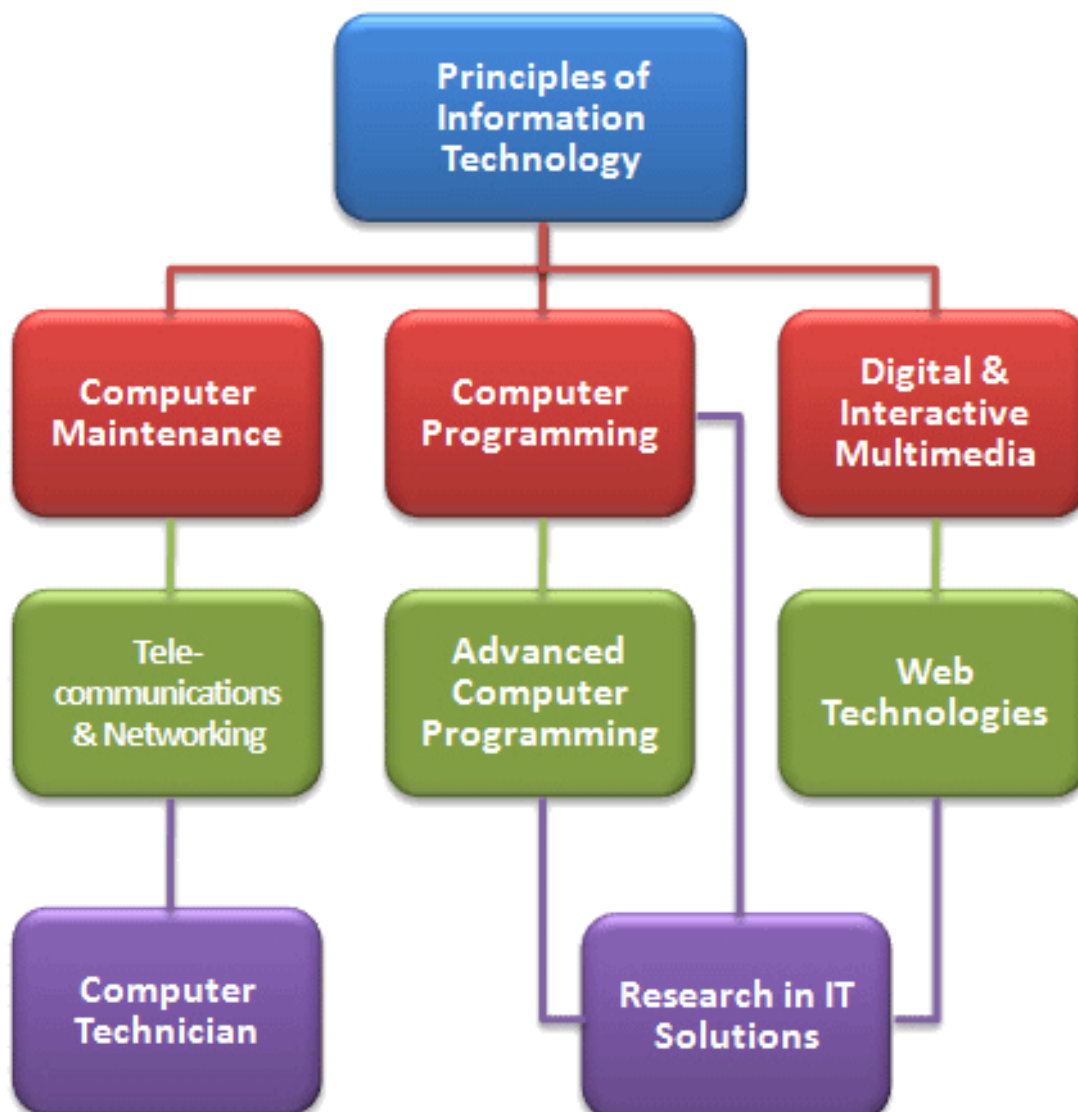
Website: <http://certification.comptia.org/getCertified/certifications/a.aspx>

**Credential (certification): CompTIA Network+**

Website: <http://certification.comptia.org/getCertified/certifications/network.aspx>

**Credential (certification): CompTIA Security+**

Website: <http://certification.comptia.org/getCertified/certifications/security.aspx>



# Information Technology



## Business and Industry

### Pathway: Digital Media and Web Technologies

**Credential (certification): Adobe® Certified Associate (ACA) - Web Authoring**

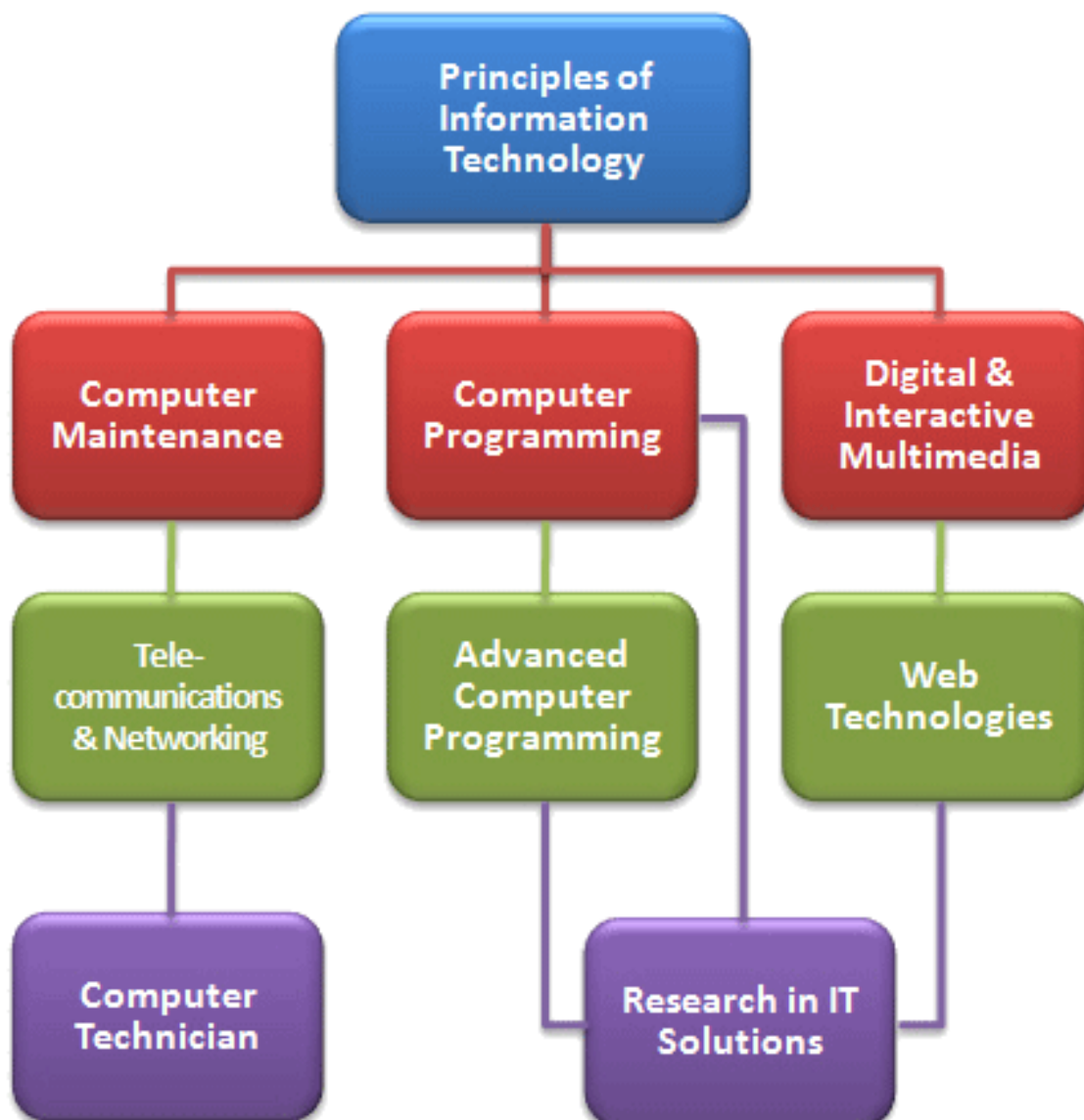
Website: [www.certipoint.com/Portal/desktopdefault.aspx?page=common/pagelibrary/adobe\\_DW.html](http://www.certipoint.com/Portal/desktopdefault.aspx?page=common/pagelibrary/adobe_DW.html)

**Credential (certification): Adobe® Certified Associate (ACA) - Interactive Media**

Website: [www.certipoint.com/Portal/desktopdefault.aspx?page=common/pagelibrary/adobe\\_FL.html](http://www.certipoint.com/Portal/desktopdefault.aspx?page=common/pagelibrary/adobe_FL.html)

**Credential (certification): CIW Web Design Specialist**

Website: [www.ciwcertified.com/Certifications/Web\\_Design\\_Series/design.php](http://www.ciwcertified.com/Certifications/Web_Design_Series/design.php)



# Information Technology



## Business and Industry

### Pathway: Geographic Information System

**Credential (certification): STARS Certification**

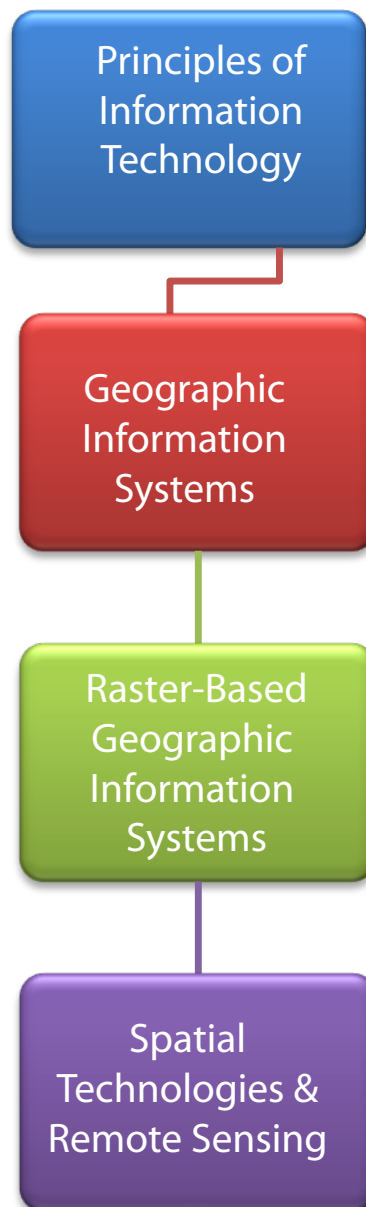
Website: [www.digitalquest.com/stars.html](http://www.digitalquest.com/stars.html)

**Credential (certification): SPACE Certification**

Website: [www.digitalquest.com/space.html](http://www.digitalquest.com/space.html)

**Credential (certification): Esri Technical Certification - Desktop**

Website: [www.esri.com/training/main/certification/certification-exams](http://www.esri.com/training/main/certification/certification-exams)



# Information Technology



## Business and Industry

### Pathway: Telecommunications and Networking

**Credential (certification): CIW Web Security Associate**

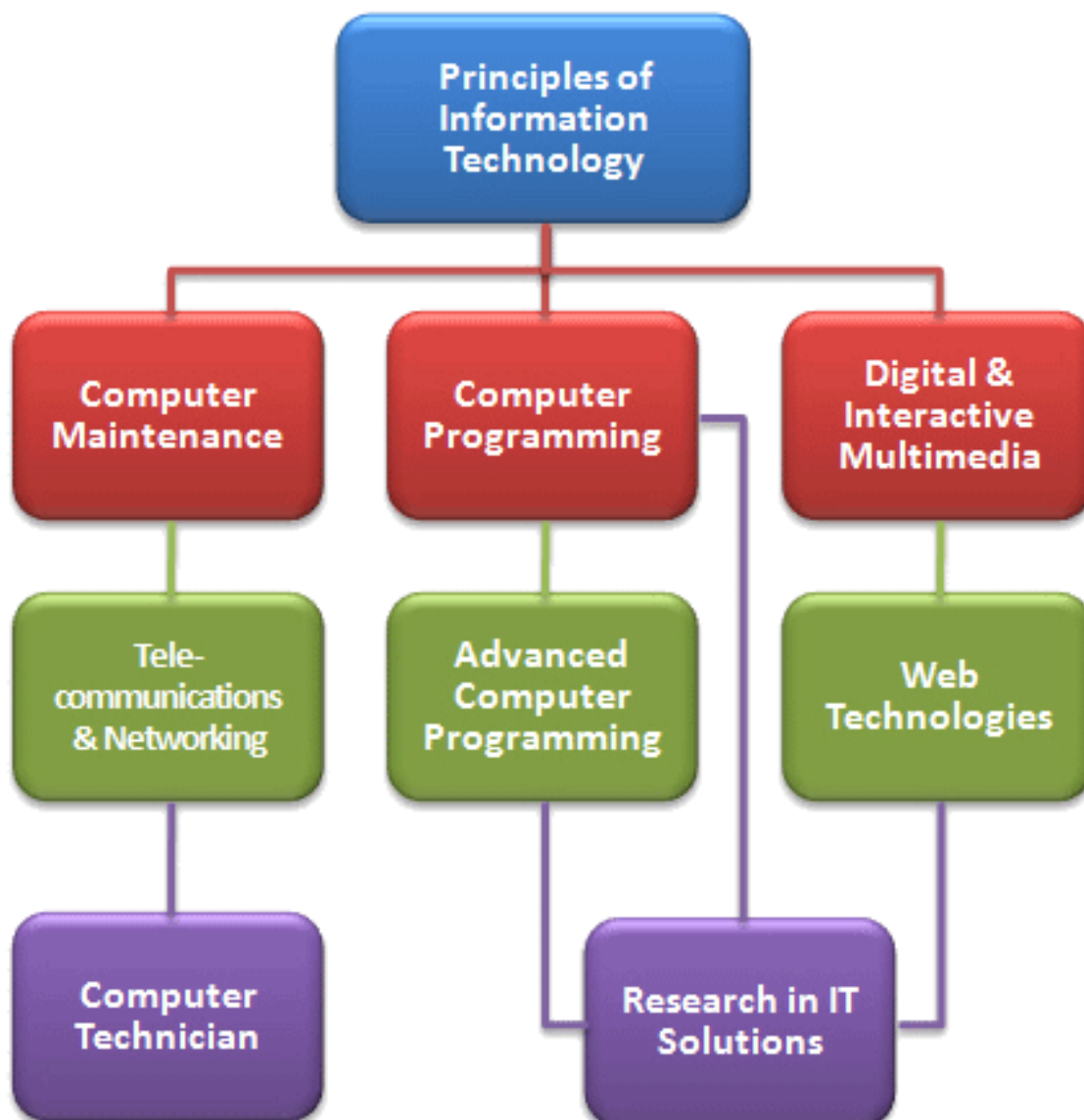
Website: [www.ciwcertified.com/Certifications/Web\\_Security\\_Series/security\\_associate.php](http://www.ciwcertified.com/Certifications/Web_Security_Series/security_associate.php)

**Credential (certification): CIW Internet Business Associate**

Website: [www.ciwcertified.com/Certifications/Web\\_Foundations\\_Series/iba.php](http://www.ciwcertified.com/Certifications/Web_Foundations_Series/iba.php)

**Credential (certification): Associate of (ISC)<sup>2</sup>**

Website: [www.isc2.org/associates/default.aspx](http://www.isc2.org/associates/default.aspx)





# Law, Public Safety, Corrections & Security



## Public Services

### Pathway: Court Systems

**Credential (assessment): Criminal Justice / CSI**

Website: [www.workforcereadysystem.org/technical\\_areas.shtml](http://www.workforcereadysystem.org/technical_areas.shtml)

### Pathway: Firefighter

**Credential (license): Basic Telecommunicator**

Website: [http://teex.org/teex.cfm?pageid=training&area=teex&templateid=14&Division=PUB-](http://teex.org/teex.cfm?pageid=training&area=teex&templateid=14&Division=PUB-LICSAFETY&Course=LET543&online=true)

[LICSAFETY&Course=LET543&online=true](http://teex.org/teex.cfm?pageid=training&area=teex&templateid=14&Division=PUB-LICSAFETY&Course=LET543&online=true)

### Pathway: Forensic Science

**Credential (assessment): TEEN Forensics**

Website: <http://teex.org/teex.cfm?pageid=training&templateid=14&area=teex&browse=284>

### Pathway: Government and Public Administration

### Pathway: Law Enforcement and Corrections

**Credential (license): Basic Telecommunicator**

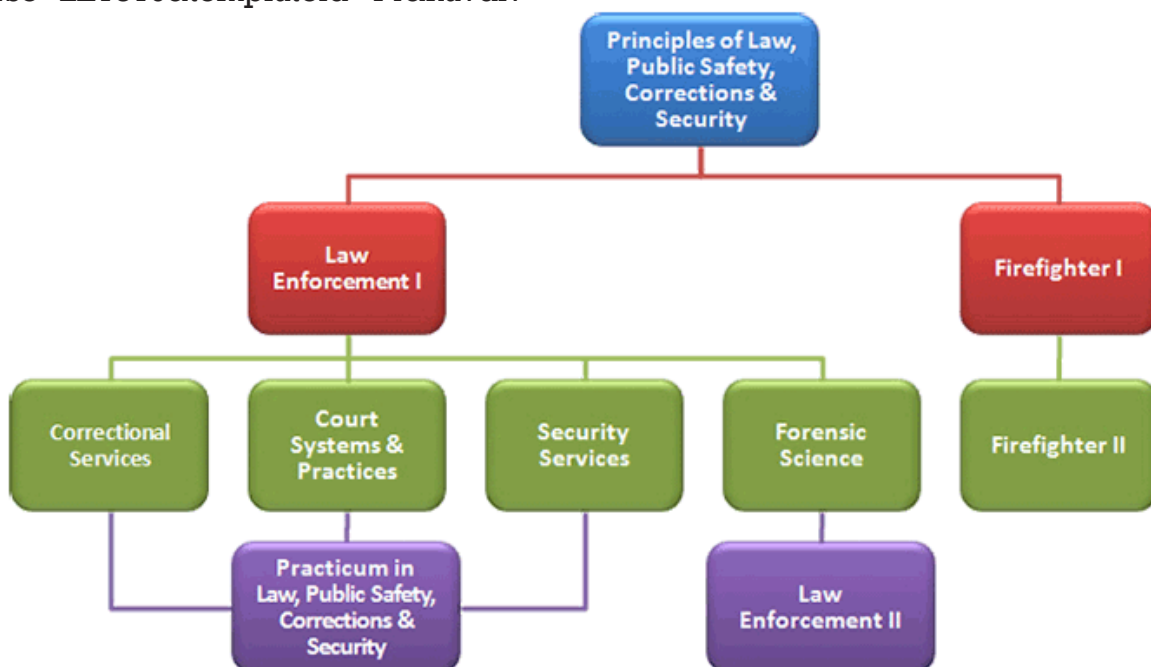
Website: [http://teex.org/teex.cfm?pageid=training&area=teex&templateid=14&Division=PUB-](http://teex.org/teex.cfm?pageid=training&area=teex&templateid=14&Division=PUB-LICSAFETY&Course=LET543&online=true)

[LICSAFETY&Course=LET543&online=true](http://teex.org/teex.cfm?pageid=training&area=teex&templateid=14&Division=PUB-LICSAFETY&Course=LET543&online=true)

**Credential (license): Municipal Jailer**

Website: [www.teex.org/teex.cfm?pageid=training&area=teex&Division=PUBLICSAF-](http://www.teex.org/teex.cfm?pageid=training&area=teex&Division=PUBLICSAFETY&Course=LET310&templateid=14&navdiv=)

[TY&Course=LET310&templateid=14&navdiv=](http://www.teex.org/teex.cfm?pageid=training&area=teex&Division=PUBLICSAFETY&Course=LET310&templateid=14&navdiv=)



# Manufacturing



## Business and Industry

### Pathway: Engineering

**Credential (certification): Autodesk Certified User**

Website: [www.certiport.com/Portal/desktopdefault.aspx?tabid=667&roleid=101](http://www.certiport.com/Portal/desktopdefault.aspx?tabid=667&roleid=101)

**Credential (certification): Certified SOLIDWORKS Associate (CSWA)**

Website: [www.solidworks.com/sw/education/certification-programs-cad-students.htm](http://www.solidworks.com/sw/education/certification-programs-cad-students.htm)

### Pathway: Precision Metal Manufacturing

### Pathway: Welding

**Credential (assessment): NCCER - Welding Level 1**

Website: [www.nccer.org/welding?pID=86](http://www.nccer.org/welding?pID=86)

**Credential (assessment): NCCER - Industrial Maintenance Mechanic**

Website: [www.nccer.org/industrial-maintenance-mechanic?pID=86](http://www.nccer.org/industrial-maintenance-mechanic?pID=86)

**Credential (assessment): NCCER - NCCER - Sheet Metal**

Website: [www.nccer.org/sheet-metal?pID=86](http://www.nccer.org/sheet-metal?pID=86)



# Marketing



## Business and Industry

### Pathway: Fashion Marketing

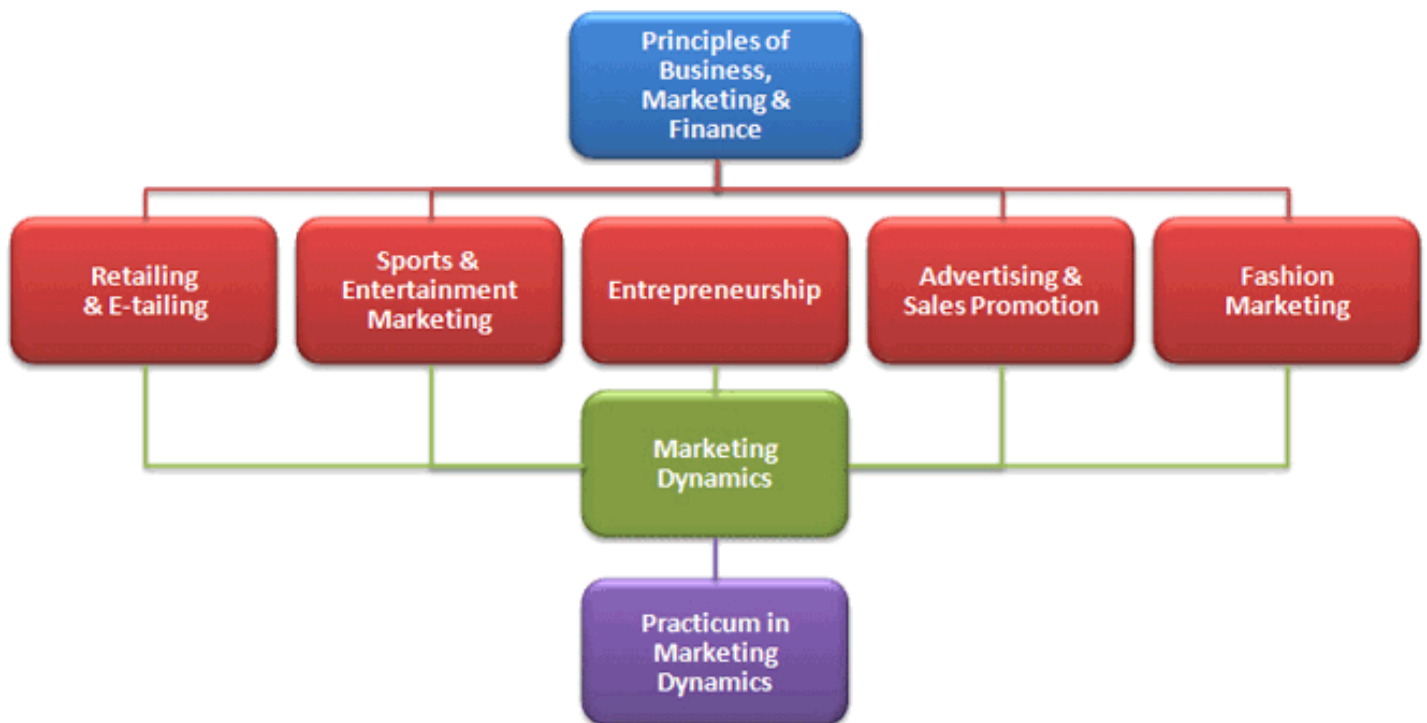
**Credential (assessment): A\*S\*K Marketing Fundamentals**

Website: [www.askinstitute.org/index.php?option=com\\_content&view=category&layout=blog&id=37&Itemid=57](http://www.askinstitute.org/index.php?option=com_content&view=category&layout=blog&id=37&Itemid=57)

### Pathway: Fashion Marketing

**Credential (assessment): A\*S\*K Entrepreneurship**

Website: [www.askinstitute.org/index.php?option=com\\_content&view=category&layout=blog&id=37&Itemid=57](http://www.askinstitute.org/index.php?option=com_content&view=category&layout=blog&id=37&Itemid=57)



# STEM



## STEM

### Pathway: Biotech

**Credential (certification):** Certified Clinical Medical Assistant (CCMA)

Website: [www.nhanow.com/clinical-medical-assistant.aspx](http://www.nhanow.com/clinical-medical-assistant.aspx)

### Pathway: Engineering

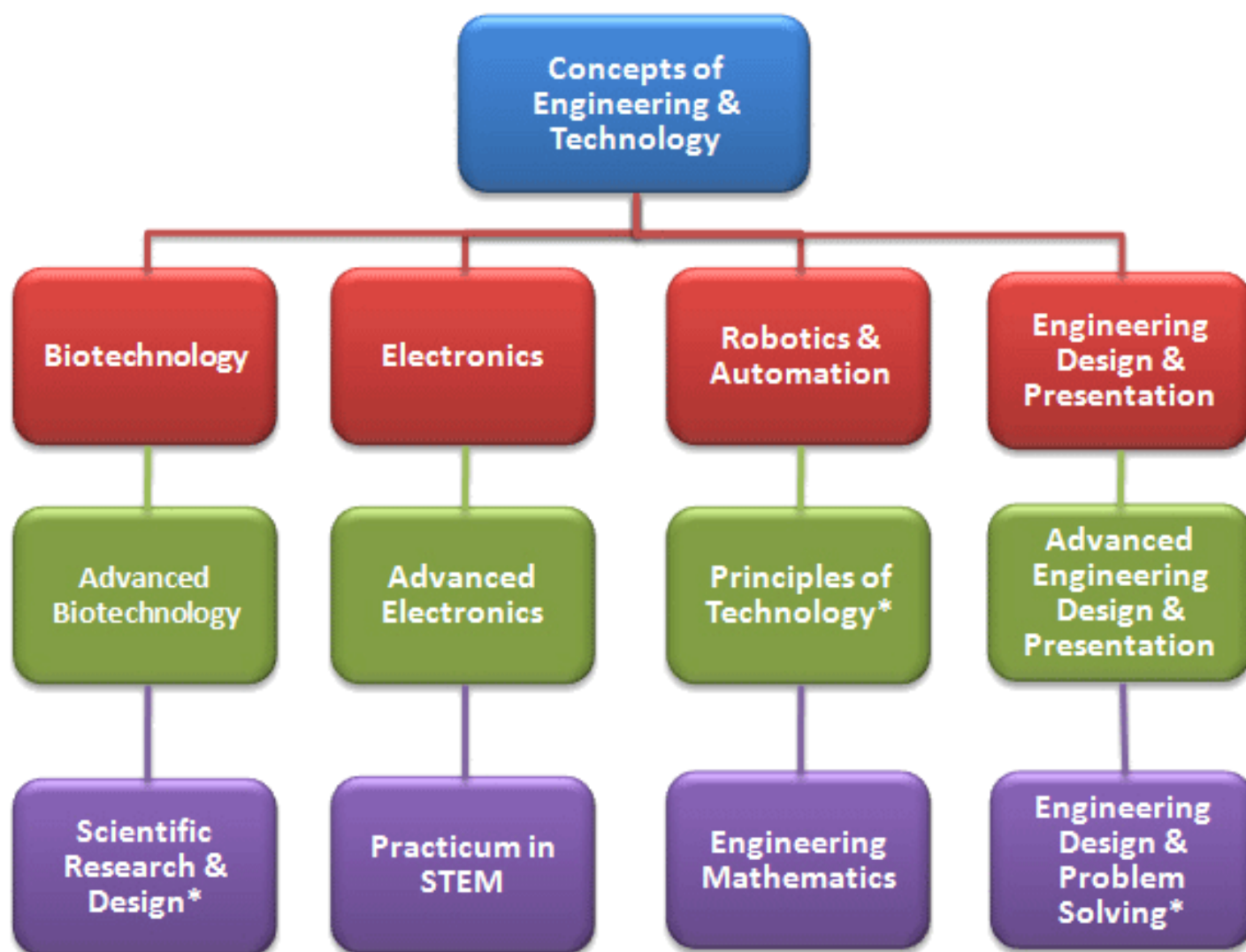
### Pathway: Robotics

**Credential (certification):** Autodesk Certified User

Website: [www.certipoint.com/Portal/desktopdefault.aspx?tabid=667&roleid=101](http://www.certipoint.com/Portal/desktopdefault.aspx?tabid=667&roleid=101)

**Credential (certification):** Certified SOLIDWORKS Associate (CSWA)

Website: [www.solidworks.com/sw/education/certification-programs-cad-students.htm](http://www.solidworks.com/sw/education/certification-programs-cad-students.htm)



\*Course approved for science credit

# Transportation, Distribution & Logistics



## Business and Industry

### Pathway: Automotive Technology

**Credential (certification): ASE - Brakes (A5)**

Website: [www.asestudentcertification.com/index.html](http://www.asestudentcertification.com/index.html)

**Credential (assessment: ASE - Electronic/Electrical Systems (A6)**

Website: [www.asestudentcertification.com/index.html](http://www.asestudentcertification.com/index.html)

**Credential (assessment: ASE - Heating and A/C (A7)**

Website: [www.asestudentcertification.com/index.html](http://www.asestudentcertification.com/index.html)

**Credential (assessment: ASE - Engine Repair (A1)**

Website: [www.asestudentcertification.com/index.html](http://www.asestudentcertification.com/index.html)

### Pathway: Logistics and Global Supply

### Pathway: Logistics and Global Supply (Maritime)

**Credential (assessment): Certified Logistics Associate (CLA)**

Website: [www.msscusa.org/logistics-certification-claclt/](http://www.msscusa.org/logistics-certification-claclt/)

