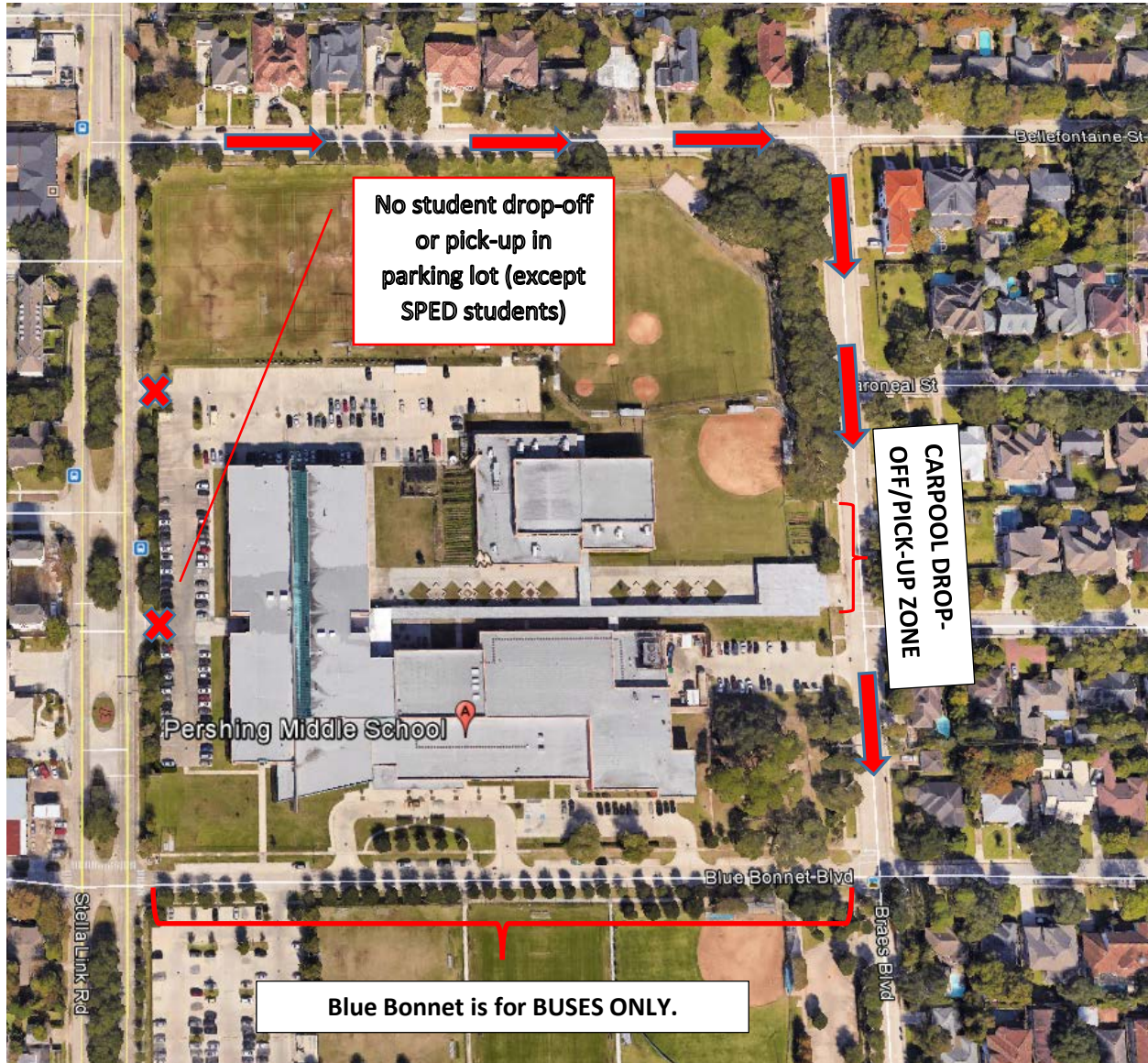



Pershing Middle School Drop-off & Pick-up Procedures



All carpool riders should follow the Carpool Route  by turning onto Bellefontaine and then right onto Braes Blvd. Blue Bonnet is closed to traffic during morning drop-off and afternoon pick-up. Please continue down Braes Blvd once you leave the carpool drop-off/pick-up zone. Please do not park along Braes Blvd (school side) during drop-off (7:45 – 8:25) and pick-up (3:30 – 4:15). This slows traffic down and causes an unsafe situation where students walk between moving vehicles. We also ask that you please not jump the line. Be patient and wait for the car in front of you to move.

The faculty & staff parking lot off of Stella Link is not to be used for student drop-off or pick-up (except YMCA after-school program beginning at 4 p.m.).

If we all work together and follow these procedures, we will keep our students safe.