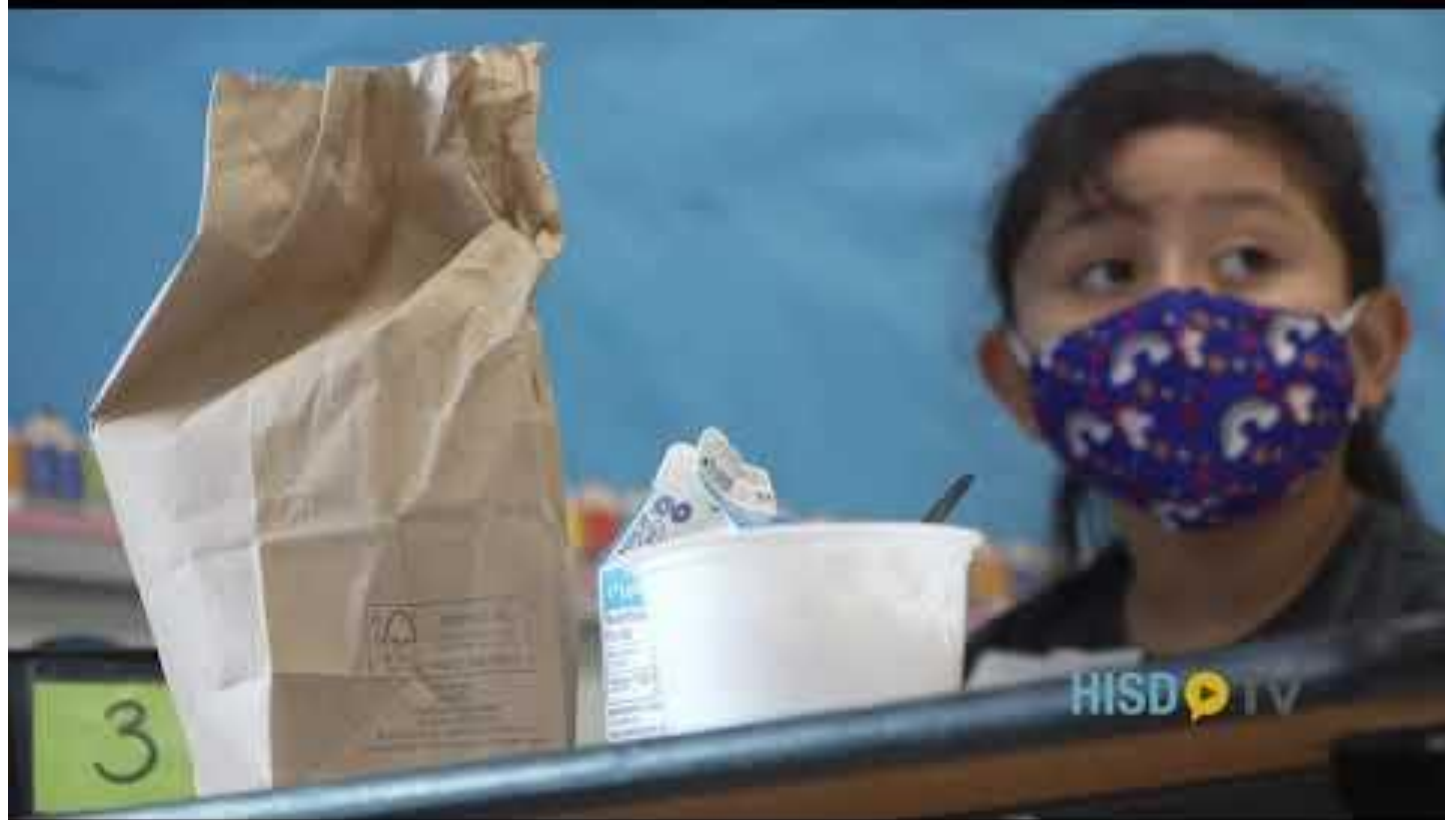


# Reopening Of School

Southmayd ES  
September 24, 2020

## Message from our Superintendent, Dr Lathan





# HISD SAFETY AND INSTRUCTIONAL PLANS

- Reopening Plan – Link here:

<https://www.houstonisd.org/Page/182535>

- Communicable Disease Plan - Link here:

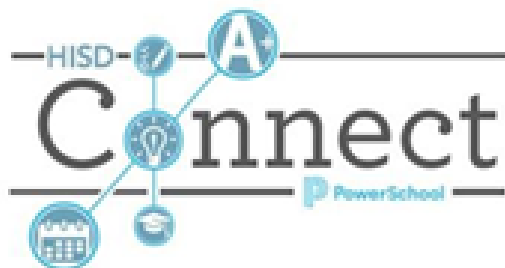
<http://houstonisd.org/CDP>

- Instructional Continuity Plan - Link Here:

<http://houstonisd.org/ICP>

# LEARNING OPTION SELECTIONS

---



- HISD families required to select either in-person or virtual instruction for students.
- Selection window: Monday, Sept. 21, through Friday, Sept. 25, through the HISD Connect Parent Portal “Forms” section.
- Once a selection is made, the choice is valid for the entire school year. However, there will be opportunities to change a selection throughout the year, if needed.

More info: [HoustonISD.org/LearningOption](https://HoustonISD.org/LearningOption)

# On campus protocols

- All staff and students will be required to go through a screening process before entering the building
- Wear mask at all times covering nose and mouth- mask cannot be a bandana
- Walk on the social distance markers
- Social activities and campus movement be limited

# Meetings

- Parent Meetings
  - Will be done on the phone if able
  - Laptop Setup for parents if don't have access to tech or internet
    - Mask required
    - Will be screen for symptoms and not able to come if symptomatic

## **Specific to Visitors:**

Visitation will be limited to essential visitors who have previously scheduled appointments. All visitors must wear masks when inside an HISD school or building.

Non-essential visitors, including those registered through the HISD VIPS process, should utilize virtual meetings, when possible. Lunch visits are prohibited.

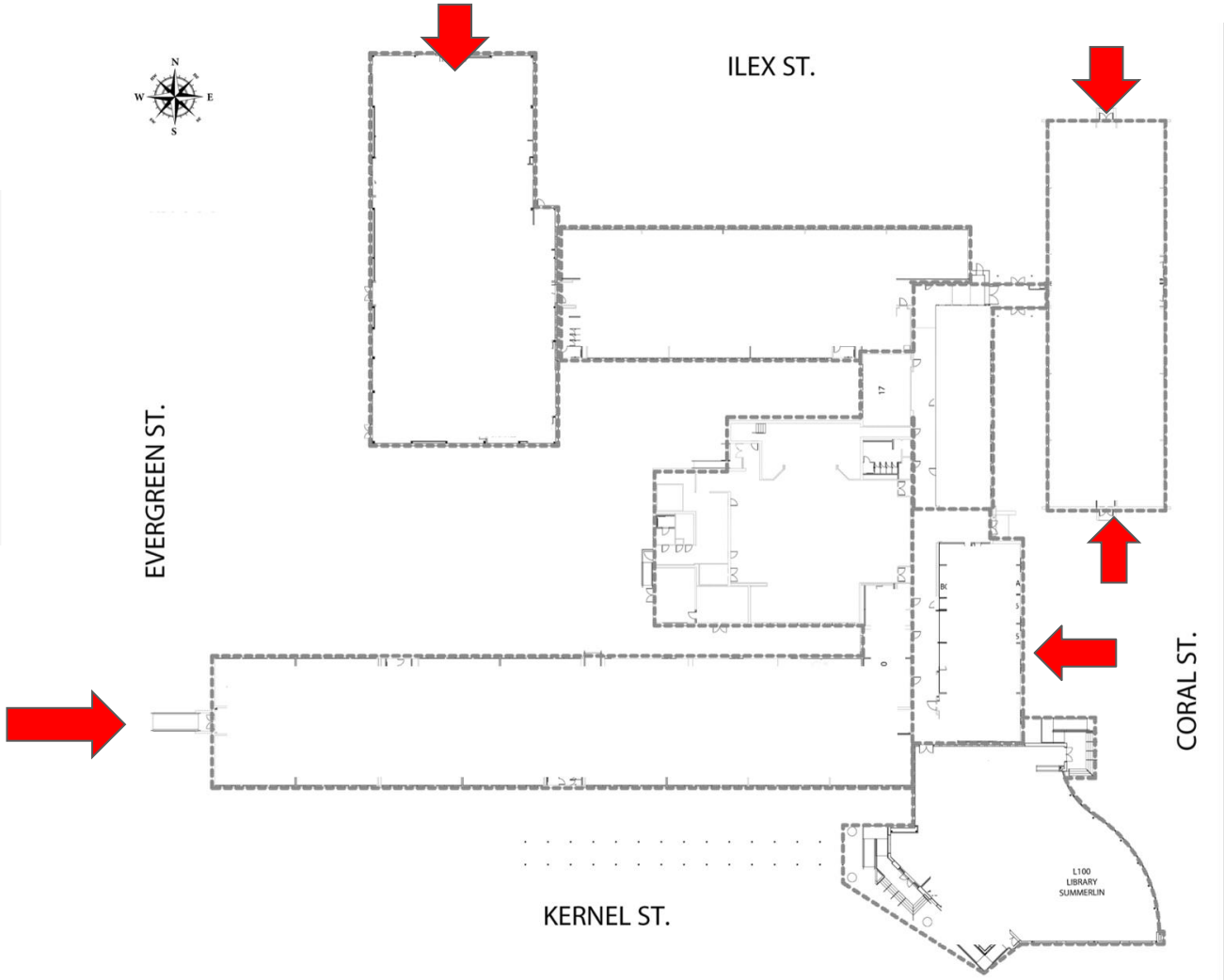
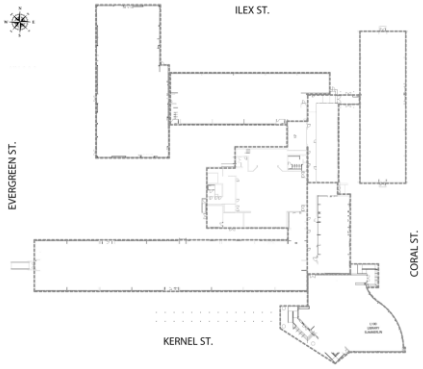
Non-essential deliveries — such as food, personal items, homework, musical instruments — are prohibited.



# Arrival/ Dismissal

- No contact with parents during drop off and pick up
  - social distance markers around the perimeter of school
  - Drop off and go- wait until they have entered the gate
    - Call back if student has symptoms
    - When we know if selection is face to face, all students will be called to ensure working numbers
- Entry points close to classes
  - Car rider area
  - Lessen time for screening
  - Lessen traveling within building

# School Map



# Logistics determined by numbers

- ❖ All schedules
  - Rosters
  - Daily schedule
  - Ancillary
  - Lunch
  - Restroom schedule

# COVID CASE PROCEDURE

If my child or staff member on campus tests positive for COVID-19, will the building be shut down?

If COVID-19 cases are identified, campuses will be closed/sanitized. Notifications will be provided to impacted parents and students who have possibly been exposed. Instruction will shift to virtual learning if the school closes.

# School Supplies List if face to face

## Southmayd Supply List 2020-2021



### \*Pre-Kinder\*

- 5 #2 pencils
- 1 boxes of regular crayons
- 2 glue sticks
- 1 semi pointed scissor
- 2 boxes of Kleenex tissues
- 1 zipper bag (not a school box)
- 1 box of Ziploc bags (Gallon Size)
- 1 ream of white copy paper
- 1 packages of dry erase markers (any color)
- 1 packages of play doh
- 1 composition books
- 1 eraser
- 1 pencil sharpener

### \*Kinder\*

- 1 pack of play doh
- 1 pair of scissors
- 2 glue sticks
- 5 #2 pencil
- 1 box of crayons
- 1 supply zipper bag (not a box)
- 1 ream paper
- 1 Marble Composition Journal
- 1 box of Ziploc bags (Gallon Size)
- 1 eraser
- 1 pencil sharpener

### \*1st Grade\*

- 1 box of 24 #2 pencils
- 1 box of 24 count crayons
- 1 pair of fiskar scissors
- 4 Big glue sticks
- 2 primary journal composition notebooks (K-2)
- 4 large pink or white erasers
- 1 supply box

### \*1st Grade\* Continuation

- 2 boxes of tissues
- 1 bottle hand sanitizer
- 2 pocket folders
- 1 Pencil Sharpener

### \*2nd Grade\*

- 3 packs of No. 2 pencils
- 2 marble composition notebooks
- 1 1-inch binder
- 1 ream of white copy paper
- 2 boxes of tissue
- 1 roll of paper towels
- 1 packs of disinfecting wipes
- 1 bottle of hand sanitizer
- 1 can of disinfectant spray
- 2 packs of crayons (24 Count) Fall/Spring
- 1 scissors
- 3 elmer's glue sticks
- 1 Pencil Sharpener

### \*3rd Grade\*

- 2 marble composition notebooks
- 1 box of #2 pencils
- 1 red pen and 1 blue pen
- 1 lg. glue stick
- 1 box of crayons 16 or 24 ct.
- 1 pair of scissors
- 1 supply box or bag
- 1 box of Kleenex
- 1 container of disinfecting wipes
- 1 bottle of hand sanitizer
- 1 bottle of antibacterial hand soap
- 1 roll of paper towels
- 1 pencil sharpener

### \*4th Grade\*

- 1 pack of ½ inch graph paper
- 1 box of Kleenex
- 1 box of sandwich bags
- 1 packs of No. 2 pencils
- 1 can of disinfecting spray
- 1 roll of paper towels
- 1 box of 24 crayons
- 1 pair of scissors
- 2 jumbo glue sticks
- 1 pack of wide ruled notebook paper
- 1 pack of 4 erasers
- 1 pack of markers
- 2 folders (with pockets prongs) (only bilingual)
- 2 composition books
- 1 packs of Clorox sanitizer wipes
- 1 packs of Expo dry erase markers
- 1 pack of sheet protectors
- 1 ream of white copy paper
- 1 pencil sharpener

### \*5th Grade\*

- 3 pocket folders with brads
- 3 marble composition notebooks
- 1 pair of scissors
- 1 packs of No.2 pencils (24 count)
- 1 pack glue stick
- 1 box of colored pencils
- 1 personal size bottle of hand sanitizer
- 2 personal packs of Kleenex
- 1 ruler (centimeters and inches)
- 1 highlighter
- 1 roll of paper towel
- 1 pencil sharpener

# Uniforms

- No uniform enforcement this year
  - Must be appropriate
  - No short skirts, dresses, or shorts (must be below the knee)
  - No vulgar shirts or personal cloth masks
  - No spaghetti strap shirts
  - No pants with holes on above the knee

# Reminder Items

- Grades do count
- Attendance counts
  - Attendance contracts
  - Home visits
- Login on time
  - Clothing
  - Working space
- Monitor child's activity on TEAMS

# Reminder Items

- No school for students Monday, September 28th
- Open House September 30th 5-6pm Virtual Open House
- Visit our school website
  - <https://www.houstonisd.org/southmaydes>
- Call outs
  - Repeat again and again
- Virtual office numbers
  - Will only be answered during school hours if the school is closed and we are working remotely
    - Monday- Friday 7:30-4:00
- Complete your learning survey (virtual or face to face) by tomorrow