



# EVERY COMMUNITY EVERY SCHOOL

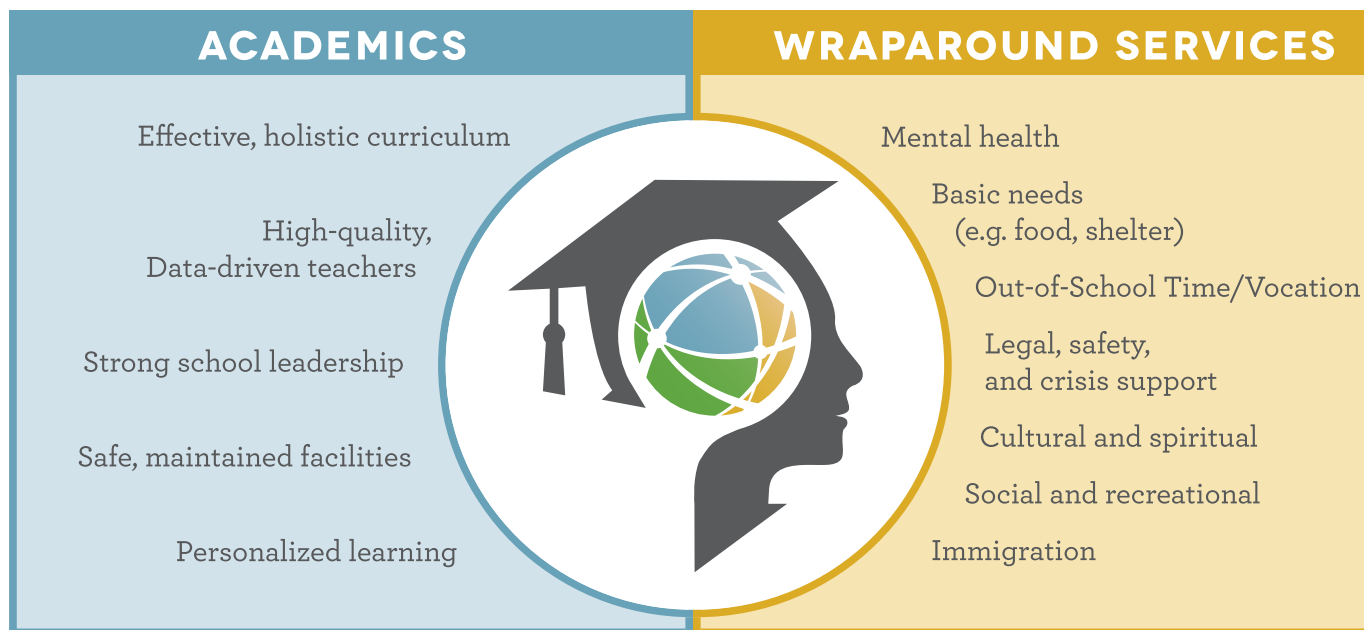
CONNECTING SCHOOLS TO COMMUNITY RESOURCES AND WRAPAROUND SERVICES TO IMPROVE THE WELL-BEING OF ALL STUDENTS

With support from the city of Houston and with funding from the Houston Endowment, HISD has developed **Every Community, Every School**, a comprehensive initiative to connect schools to non-academic supports needed to improve the well-being and academic achievement of all students. Often called wraparound services, these non-academic supports address critical issues such as mental health and physical health needs, food insecurity, lack of stable housing, violence, incarceration of a parent, and many other challenges that can have adverse effects on a student’s readiness and ability to learn. When wraparound services are provided in tandem with strong academics and

high-quality teaching, schools can truly meet the needs of the whole child and graduate students who are college and career ready.

## THE PLAN

The plan for **Every Community, Every School** is based on the findings of interviews with Houston civic and community leaders; the study of other large cities and school districts with wraparound service programs; input from district, school, and teacher leaders at HISD; analysis of HISD, TEA, and Census data; and the review of existing local efforts.



Wraparound services cannot replace strong academics; the two must work together to address the whole child’s needs.

### CAMPUS RESOURCE SPECIALIST

Schools in cohort one will be provided with funding to employ a campus wraparound resource specialist, who will be dedicated full time to the following:

#### BUILDING RELATIONSHIPS WITHIN THEIR SCHOOL AND COMMUNITY

- Establish a strong working relationship with school leadership
- Develop and nurture relationships with students, families, and community members and organizations

#### ENGAGING STAKEHOLDERS THROUGHOUT NEEDS ASSESSMENT AND PROVIDER SELECTION

- Support school leadership in making data-driven program decisions
- Gather input from community leaders during the decision-making process

#### EFFECTIVELY CONNECTING STUDENTS TO NEEDED SERVICES

- Work with a district Wraparound Services Director to perform campus and community needs assessment, find service providers, and troubleshoot challenges
- Engage families and school staff to better understand student needs
- Develop and manage partnerships with local service providers
- Participate in and learn from resource coordinator community



### CONTACT INFORMATION

**Nubia Garza**  
*Administrative Assistant,  
Wraparound Services*

**Email:** Ngarza6@HoustonISD.org  
**Phone:** (713) 556-5917

**Luis Flores**  
*Manager,  
Wraparound Services*

**Email:** Luis.Flores2@HoustonISD.org  
**Phone:** (713) 556-4207

**Cierra Nickerson**  
*Manager,  
Wraparound Services*

**Email:** Cnickers@HoustonISD.org  
**Phone:** (713) 556-4208

**Eduardo Sindaco**  
*Manager,  
Wraparound Services*

**Email:** Eduardo.Sindaco@HoustonISD.org  
**Phone:** (713) 556-7149

**Tynette Guinn**  
*Manager,  
Wraparound Services*

**Email:** Tguinn@HoustonISD.org  
**Phone:** (713) 556-4209

**Brenda Garcia-Salazar**  
*Manager,  
Wraparound Services*

**Email:** Bgarcias@HoustonISD.org  
**Phone:** (713) 556-4211