



KEY FACTS

Scope: New facility preserving the architecturally significant building structure for a campus accommodating 2,800 – 3,100 students.

Trustee: Harvin C. Moore, District VII

Location: 3325 Westheimer Rd.

LAMAR HIGH SCHOOL

OVERVIEW

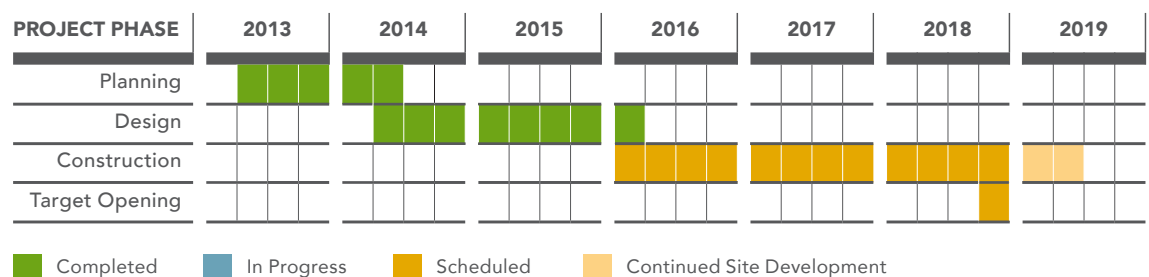
Located in Houston's Upper Kirby district, Lamar High School offers an International Baccalaureate World School and a magnet program in Business Administration. The campus consists of four main school buildings and several small ancillary buildings. The original building was constructed in 1937 with additions erected in 1987.

Under the HISD bond program, the high school will receive a new facility that preserves the architecturally significant building structure and accommodates 2,800 to 3,100 students. The design phase is well underway, with plans to bid the project as early as this summer and start construction before the end of the year.

FEATURES

- Flexible, modern learning spaces
- New culinary arts lab just off the main lobby
- Multi-story parking garage
- New athletics wing featuring a new gym, natatorium, locker rooms
- Full complement of athletic practice fields for football, baseball and softball teams
- Existing building will be renovated while preserving architecturally significant building structure

SCHEDULE

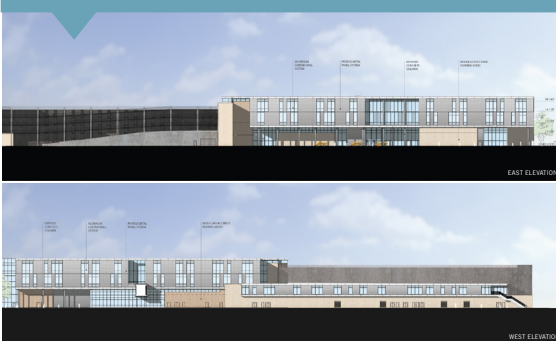


RENDERINGS

AERIAL VIEW



EAST AND WEST ELEVATIONS



NORTH AND SOUTH ELEVATIONS



STAYING INFORMED

- Send questions or requests to BondInfo@HoustonISD.org
- Visit us online at HoustonISD.org/Bond
- Subscribe to our monthly eNewsletter at BondNewsletter@HoustonISD.org
- Get answers to common questions at HoustonISD.org/BondQuestions
- Learn more about 21st century schools at HoustonISD.org/21stCentury
- Join a Project Advisory Team or attend the meetings. Meeting minutes can be found at HoustonISD.org/PATMinutes
- Community meetings and upcoming events can be found at Houstonisd.org/BondCalendar

GET MORE INFORMATION ONLINE

HoustonISD.org/Bond

Project Updates

Architectural Renderings

Budget Info

Meeting Minutes

Videos

Dynamic Schedule

BUILDING PROGRAMS

- Home
- HISD 2012 Bond
 - Overview
 - District-Wide Projects
 - Bond Projects Map
 - Traffic Light Report
 - Frequently Asked Questions
 - Información en Español
- Non-Bond Projects
 - Doing business with HISD
 - Project Advisory Teams
 - Bond Oversight Committee
 - Communications
 - Green Schools
 - 21st Century Schools
- Real Estate
 - Construction & Facilities Services
 - HISD Design Guidelines
 - Videos on the Bond
 - Have a question?

DESCRIPTION

Condit Elementary School, originally built in 1936, moved to its current facility in Bellair in 1914, with an addition built in 1927. The pre-K - 5 campus is a Vanguard neighborhood school.

Scope of Work

New elementary school for 750 students.

Project Status

Contractor is currently drilling piers and installing underground utilities.

KEY INFORMATION

Budget: \$24,293,919
 Trustee: Michael L. Lunsford
 Location: 7020 South 3rd

PROJECT PHASE

	2013	2014	2015	2016
Planning	Completed	In Progress	Scheduled	Continued Site Development
Design				
Construction				
Target Opening				

HAVE A QUESTION OR COMMENT?

Please submit your question or suggestion about this school project to bondinfo@houstonisd.org and an HISD representative will follow up.