

BCMA Instructional Agenda

October 19, 2015



Important Dates in October

October 19th – 23rd

HISD District Snapshot #2
Reading, Math, Science and Social Studies

October 28th
Early Dismissal

October 10, 17, 24, 31
Saturday School / Detention

Dress Code

Monday - Thursday

- Gray Polo Shirt w/BCMA Logo (Tucked Into) Khaki Pants or Knee Length Skirt w/Belt
- Gray BCMA Sweater or Solid Gray Sweater
- BCMA I.D. Badge worn on Neck (All Times)

Friday

- Solid Blue Jeans (No Cuts, Holes or Tears) with BCMA Spirit Shirt or College Shirt

Early Student Pick-Up Procedures Early Pick Ups Limited in Final 30 Minutes

Parents/Guardians, it is important to remember that the A5 and B10 are instructional periods, which students are expected to be in attendance the entire time.

However, we do realize that there are situations that a student needs to be picked up early. In the event that this is the case, please do so before 3:30PM.

Parent Communications to Students

Please limit parent messages communicated to students during the instructional day. It is suggested that text messages be sent to a student during the day and the student can then receive the message after school when they can turn phones on.

HUB Access / Online Textbook Access

If you are having difficulty accessing the HUB from home, the issue may not begin there. If a student has not accessed the HUB, using the info below at an HISD CPU or Laptop, they will be denied access at home.

Username: Student\S##### (# is Student ID #)
Password: Student's DOB (May 1, 2001 is 05012001)

If this is the case, you will need to contact me, Mr. Turner, to resolve this issue, as I am the FAST PASS contact for BCMA in charge of resetting student passwords.

Textbook Access / Digital Resources Update

ELA / Math

Teachers have been given instructions to distribute student Username and Password. Link is accessible via the HUB, but student must have Username and Password from Teacher.

Social Studies

Active Classroom, a Digital Resources, is available in the HUB and serves as the primary resource.

Science

Students in Science have been given a Science Consumable Textbook and have access to the same text via the HUB.

Algebra I / Geometry

Students have a similar situation as with ELA/Math, in which a link is accessible via the HUB, but student must have Username and Password from Teacher.

**\$10.00 Oxford Sadlier Vocabulary Book,
from the General School Supply List have arrived**
Deadline: October 15, 2015
Please bring \$10 to purchase your copy ASAP



This Week in Neuroscience with Dr. Williams & Dr. West-Denning

This Week:

- Reviewing the past 9 weeks of material in preparation for our Exam
- Making models of a neuron

Exam:

- October 22nd & 23rd

Upcoming Deadlines:

- Introduction and Citations: October 29th & 30th
- Results Draft: November 10th & 12th
- Results Final: November 18th & 19th

This Week in Mathematics with Dabas, Elegarle, & Jaggi

Mon/Tue:

- Review for Snapshot 2 / Introduction to Ratios
- Homework – Snap shot 2 Review packet

Wednesday:

- Review for Snap Shot 2 & Ratios
- Homework- Snap shot Review packet

Thurs/Fri:

- HISD District Snapshot #2

This Week in Physical Education with Mrs. Strong & Mr. Johnson

BCMA physical education uniforms will be sold to students during their PE class. If your student does not have Mrs. Strong they may purchase their uniform in the morning before school, located in the gym, with Coach Johnson.

Students are required to wear the BCMA's PE Uniform daily. If your child has he/she uniform from a previous school year they may wear the same one.

Uniform Cost: FULL SET (SM-LRG) \$20 (XL-XXL) \$30
Individual pieces \$10 each

"This Week in the World of Science" Mrs. Means & Ms. Zhang

Monday/Tuesday/Wednesday: Students will engage in several different lab activities where they will test the physical properties of minerals including hardness, color, luster, and streak. Students will also do a brief review of concepts covered in the past weeks to prepare them for their district snapshot and teacher's unit exam.

Thursday/Friday: Students will show mastery of all concepts covered in the past weeks by taking the district's snapshot exam and teacher's unit exam.

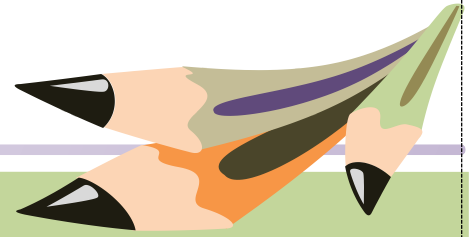
HOMEWORK TO COME

Day given and due date depends on labs and activities covered each day

- Physical Properties of Mineral
- Study all materials for Snapshot & Unit Exam

Parents: Please note that in Science classes, students engage in hands-on, group labs that require attendance in the actual classroom. Homework is based upon the progress of the labs and activities during that time and changes week to week due to our schedule of A and B days. Also, the agenda is just an estimate of things to come based on the schedule and student's academic needs.

Please remind student to bring supplies to class daily for maximum success.



BCMA Instructional Agenda



This Week in World Cultures with Palmitier & Scott

Monday/Tuesday 10/19-20

Compare and Contrast Judaism, Islam & Christianity.
Examine the main components of each religion.

Wednesday/Thursday 10/21-22

Examination of oil and energy resources in the
immediate area and supply and demand of such.

- RELIGIONS QUIZ!!

Friday 10/23 and Monday 10/26

This Week in ELA-R with Hayner, Walker & Martinez

We will continue with House On Mango Street, with a
focus on Author's perspective, making inferences,
and paraphrasing texts.

Upcoming Due Dates: November 2nd & 3rd

The Mango Map Project is due November 2 and 3 for
A and B days, respectively.

A hyperlink for audio and text is below:

[The House on Mango Street \(Hyperlink\)](#)

A URL Address for audio and text is at the bottom of
this page.

URL Address for *The House on Mango Street*:

http://esl-bits.net/ESL.English.Learning.Audiobooks/Mango_Street/preview.html

Mr. Lee's Agenda - 6th Grade ELA Week of October 19th to 23rd Subject to Change)

Monday, October 19th (Blue) and Tuesday, October 20th
(Burgundy)

- Chapter 1 Vocabulary Quiz
- Draft Body Paragraphs 2 and 3
- **HW: SNAPSHOT REVIEW HANDOUT**

Wednesday, October 21st (Blue) and Thursday, October
22nd (Burgundy)

- District Snapshot Test #2
- Mini-Lesson: Conclusions
- **HW: FINISH ENTIRE ROUGH DRAFT**

Friday, October 23rd (Blue)

- Peer Revising of Rough Draft
- Peer Editing of Rough Draft
- Introduce Group Projects
- **HW: GROUP PROJECT HANDOUT**



This Week in the Math Lab with Bonno & Taplett

Math Lab: Students will continue to enrich and strengthen their math skill with Think Through Math.

Please remember that quiz and test grades come from lessons **passed** not completed.

Grading criteria is based on the program TTM. With exception of Journal all grades will be recorded weekly.

Classwork (30%): A minimum of 50 minutes per class is expected.

Homework (10%): 50 minutes a week (Mon-Sun) on “Think Through Math” Lessons separate from school time.

Quizzes (15%): Quiz average for the week (Mon-Sun) will come from the post quiz average at the end of each lesson.

Tests (20%): “On grade level” and “Below grade level” pass rate (2 separate grades) for the week (Mon-Sun).

Project (15%): The journal will be collected the Thursday/Friday of the 5th week and graded on the following criteria:

40 pts: Having a journal

5 pts per entry with a **date**, **title** and **work** shown, **NEATLY & ORDERLY** with **CORRECTIONS**.



This Week in World Cultures with Tonry

Monday/Tuesday:

Be introduced to NHD and begin the research process including research questions, thesis statements and citing documents

Homework:

Make vocabulary flashcards with a definition and example

Wednesday: Have an in-class research day
*Bring electronics if possible

Thursday/Friday: Take Snapshot 2 and prepare for the vocabulary Quiz

Vocabulary Quiz:

Monday 10/26 and Tuesday 10/27





This Week in Latin with Ms. Kirk

How I use GradeSpeed:

As I create assignments, I upload relevant information and documents so that parents will understand the work and expectations. This will allow you to better assist your students if they need help at home. As I enter assignments in GradeSpeed, I will place an "M" in the grade to denote that an assignment has been given. This is an added layer of communication as it allows parents to know when a grade/assignment has been given/assigned.

The students' response when asked about that grade should either be that they either have the assignment in their possession, or that it was already handed in. As I enter assignments, I will also indicate the date due in the assignment details. This will also assist in you knowing that an assignment was entered (with a default grade of M, zero), but not past due. This will prevent students and parents from late work and missing assignments and increase student accountability.

I also avidly utilize the comment feature on GradeSpeed. I give insight into how the students performed, why they may be underperforming, etc. This should help give a holistic picture as to how they are doing in class both academically and behaviorally.

Hopefully this will assist me in assisting you as parents. If there are any questions, please let me know and it can only better help me to serve you.

Absent work:

If a student misses class, please check GradeSpeed that day or the next day. The assignments for the day should be posted on GradeSpeed with attachments. If you email me, I can send the student a file (either word document or PowerPoint) with the day's notes and further assignment directions/guidelines.

This Week in Latin with Ms. Kirk

10/19, 10/20, and 10/21

Meet Metella and Caecilius

Mythology overview: gods and goddesses

Practice simple present tense sentences

Homework: Study for Vocabulary/Derivatives test

10/22 and 10/23

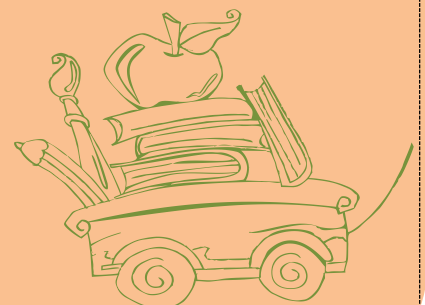
Vocabulary/Derivatives Test, Unit 2

Mythology Overview: gods and goddesses

Hero's Journey/"The Odyssey"

Begin Project: The Hero's Journey

- Survey Mythological Hero Stories
- Pick Topic/Hero to Model for Project



J. Harris Instructional Agenda
October 19-October 23
6th Grade ELA

October 19th/October 20th

- Grammar Warm-Up
- Thesis Statements
- Begin drafting persuasive essays

HW: First page of persuasive essay packet due and pages 12-16 of Unit 1 Vocabulary – due next class period.

October 21st/October 22nd

- Grammar Warm-Up
- District Assessment
- Draft 1st paragraph of persuasive essay
- Grade pages 12-16 of Unit 1 Vocabulary

HW: Finish drafting 1st paragraph of persuasive essay

October 23rd

- Grammar Warm-Up
- Draft 2nd paragraph of persuasive essay

HW: Finish drafting 2nd paragraph of persuasive essay

