

What is RTI/IAT?

RTI stands for Response to Intervention.

IAT stands for Intervention Assistance Team.

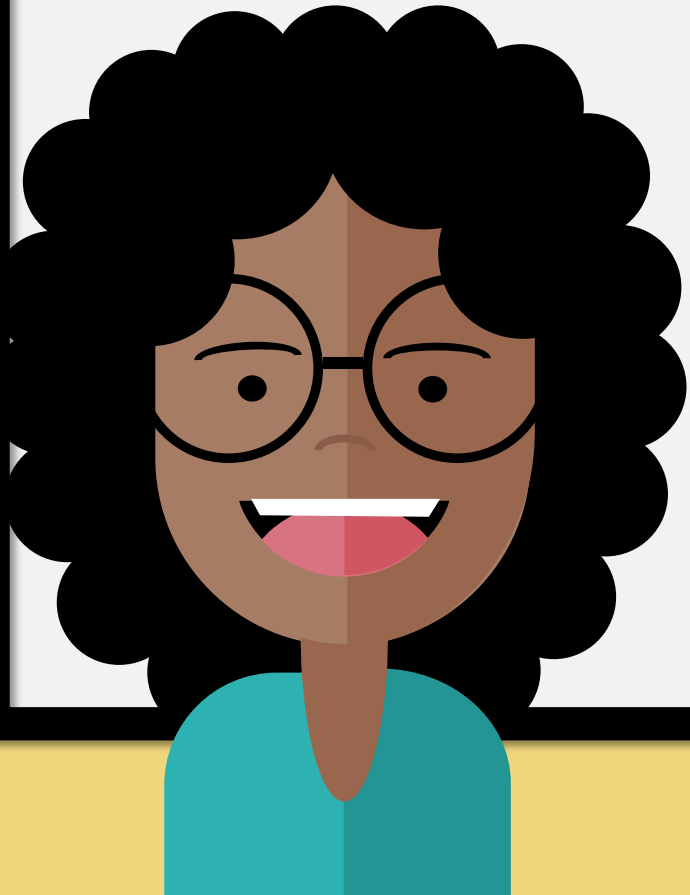
- ✓ Tier I – At or Above Grade Level
- ✓ Tier II – Intervention
- ✓ Tier III – Urgent Intervention

Students complete Renaissance Testing for Math and Reading 3 times a year to identify level and progress monitoring.



How does RTI/IAT impact my student?

- Targeted Intervention to move Tiers
- Behavior Supports Intervention
- Additional supports during class and assessments
- Alerts school when more support is needed



Accommodations Available for My Student

- ✓ Oral Administration for the Exam
 - ✓ Extra Time on Assessments
 - ✓ Language Translations*
 - ✓ Scribing*

