



EMERGE

◀ HISD ▶

Putting
IDEAS
into heads,
INSPIRATION
into hearts, and
OPPORTUNITIES
into hands.

EMERGE-HISD
empowers and prepares
high-performing students
from underserved
communities to attend
and graduate from
selective colleges and
universities across
the nation.

EMERGE

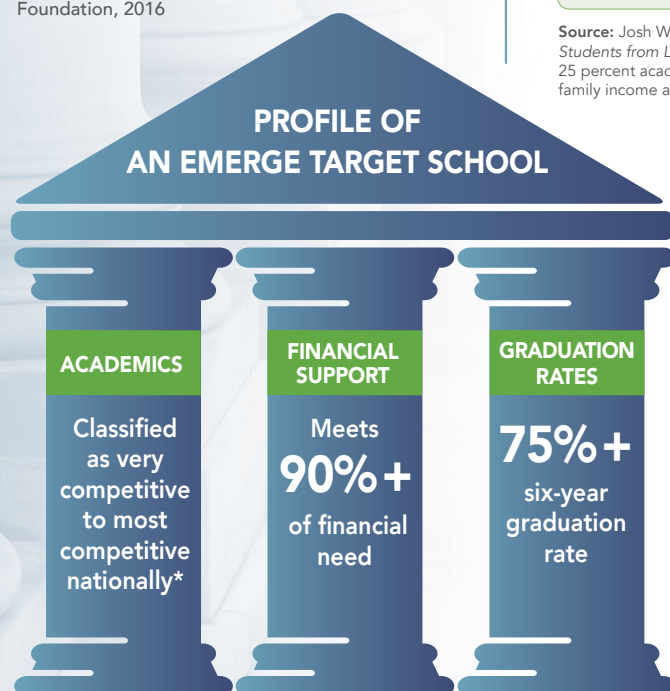
◀HISD▶

At-a-glance

The Challenge

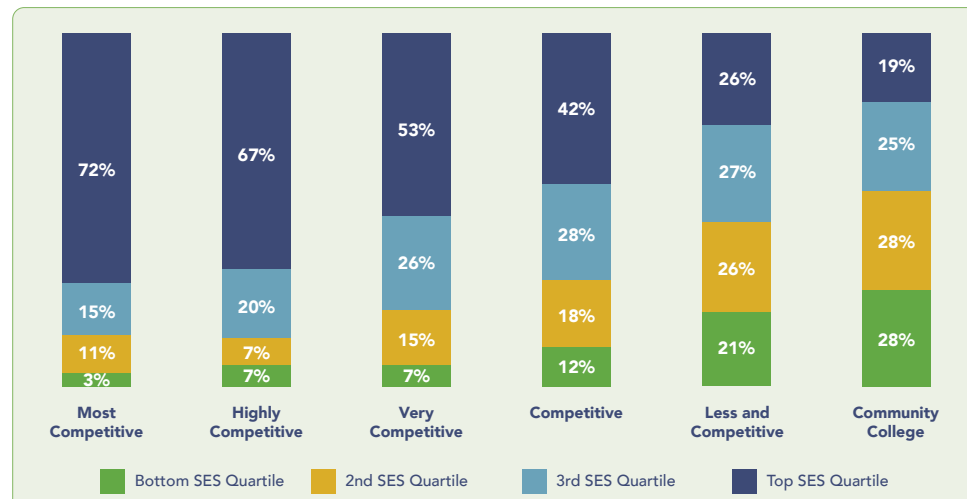
- Across the nation, only **25%** of high-performing low-income students with the academic record and test scores to succeed at the nation's most selective colleges and universities ever submit an application to attend.
- Very few qualified, low-income students attend highly selective colleges and universities even though their likelihood of graduating is much higher.
- Nationally, **41%** of academically strong students from lower income backgrounds graduate college whereas over **75%** of the ones who attend selective institutions graduate.

Source: Jack Kent Cooke Foundation, 2016



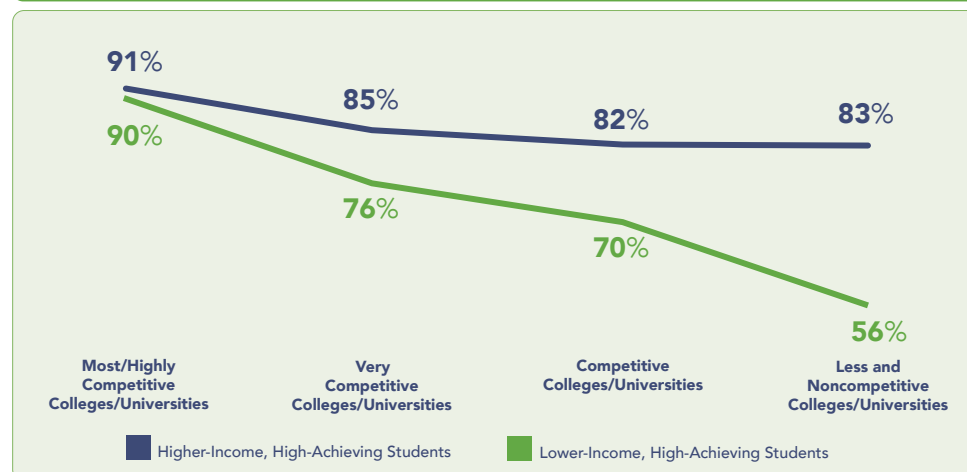
*Barron's Selectivity Index

VERY FEW LOW-INCOME STUDENTS ATTEND HIGHLY SELECTIVE COLLEGES AND UNIVERSITIES



Source: Analysis of data from the Department of Education, Education Longitudinal Study of 2002. Postsecondary enrollment of the high-school graduating class of 2004.

GRADUATION RATES OF HIGH-PERFORMING STUDENTS By Income and Selectivity of Institution Attended



Source: Josh Wyner, John M. Bridgeland, and John J. Dilulio, Jr., *Achievement Trap: How America is Failing Millions of High-Achieving Students from Lower-Income Families* (Lansdowne, VA: Jack Kent Cooke Foundation, 2008), p. 24. "High-Achievers" defined as top 25 percent academically in 12th grade. "Lower-Income" denotes family income below the national median; "Higher-Income" denotes family income above the national median.

Answering the Challenge

EMERGE-HISD has students apply to **100+** institutions across the nation that are not only classified as selective, but also provide generous financial support – **90%** or more – and boast highly supportive communities with graduation rates at or above **75%.**

Our Approach

- After School Programming
- SAT Preparation
- College Application Advising
- Out-of-State College Tours
- Alumni Support

Student Profile

- **4.2** Average GPA
- **>60%** of students are in the top **10%** of their class
- Mostly As and Bs in rigorous courses
- First generation and economically disadvantaged
- EMERGE-HISD students are trailblazers who exhibit: drive, perseverance, curiosity, humility, and gratitude.

Who We Serve

- **10th, 11th** and **12th** grade students
- **43** High Schools
- **92%** Latino and African American
- **96%** free or reduced lunch
- **720** High School Fellows
- **1000+** Scholars enrolled in college

Our Results

- EMERGE-HISD Fellows, on average, apply to **9** selective colleges
- **154** average SAT score increase
- **95%** of our Class of 2020 graduates matriculated to a selective four-year college or university*
- **82%** of our Scholars have graduated from college in four years compared to **41%** of all high-performing, low-income students nationwide

EMERGE



“Through the guidance of EMERGE-HISD, I was able to find opportunity. Without EMERGE-HISD, I would not have had a support system that extends far beyond graduation. Scholars are represented at top-tier schools across the nation. And to me, that is something to be treasured.”

Joey H.
Waltrip HS, Class of 2019
Pomona College

Our Application Process

EMERGE-HISD recruits 10th grade students every fall.

To apply, visit
www.HoustonISD.org/EMERGE

- Continued -

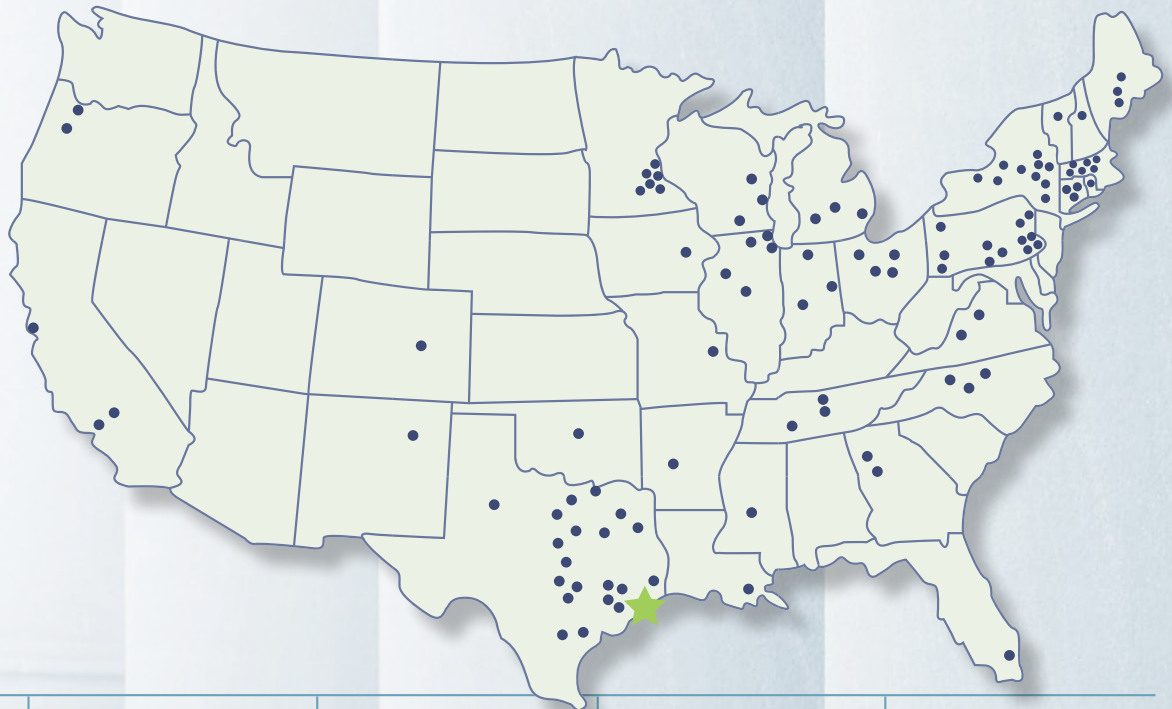
YALE CORNELL BOSTON UNIVERSITY
 WASHINGTON UNIVERSITY IN ST. LOUIS
 OBERLIN DUKE POMONA
 HARVARD
 JOHNS HOPKINS RICE
 UNIVERSITY OF PENNSYLVANIA CARLETON

EMERGE

«HISD»

Our Reach

EMERGE students attend 169 colleges and universities across 33 different states.



Albion College
 Amherst College
 Babson College
 Barnard College
 Bates College
 Bentley University
 Boston College
 Boston University
 Bowdoin College
 Brandeis University
 Brown University
 Bryn Mawr College
 Bucknell University
 California Institute of Technology
 Carleton College
 Carnegie Mellon University
 Case Western Reserve University
 Claremont McKenna College
 Colby College
 Colgate University
 College of Saint Benedict
 College of the Holy Cross

Colorado College
 Columbia University
 Connecticut College
 Cornell University
 Dartmouth College
 Davidson College
 Denison University
 DePauw University
 Dickinson College
 Duke University
 Earlham College
 Emory University
 Franklin and Marshall College
 Franklin W. Olin College of Engineering
 George Washington University
 Georgetown University
 Gettysburg College
 Grinnell College
 Hamilton College
 Harvard University
 Harvey Mudd College
 Haverford College

Johns Hopkins University
 Kalamazoo College
 Kenyon College
 Lafayette College
 Lehigh University
 Macalester College
 Massachusetts Institute of Technology
 Middlebury College
 Mount Holyoke College
 Northeastern University
 Northwestern University
 Oberlin College
 Occidental College
 Pitzer College
 Pomona College
 Princeton University
 Reed College
 Rensselaer Polytechnic Institute
 Rhodes College
 Rice University
 Scripps College
 Skidmore College
 Smith College

Soka University of America
 St. John's College (New Mexico)
 St. Lawrence University
 St. Olaf College
 Stanford University
 Swarthmore College
 Syracuse University
 The College of Wooster
 Thomas Aquinas College
 Trinity College
 Trinity University
 Tufts University
 Tulane University
 Union College
 United States Air Force Academy
 United States Coast Guard Academy
 United States Military Academy
 United States Naval Academy
 University of Chicago

University of Michigan-Ann Arbor
 University of North Carolina at Chapel Hill
 University of Notre Dame
 University of Pennsylvania
 University of Richmond
 University Of Rochester
 University of Southern California
 University of Virginia-Main Campus
 Vanderbilt University
 Vassar College
 Wabash College
 Wake Forest University
 Washington and Lee University
 Washington University in St Louis
 Wellesley College
 Wesleyan University
 Williams College
 Yale University

