



THOMPSON ELEMENTARY STUDENT HANDBOOK

2022-2023



“Soaring *Beyond* Expectations”

Table of Contents

Contents	Page Number
Table of Contents	1
Parent Signature Page	2-3
How Can We Help You? Contact Page	4
Staff Roster with E-Mail Addresses	5
School Mission, Vision, Literacy Plan Statement and Critical Success Factors	6
School Hours and Early Dismissal Days	7
Arrival, Attendance and Extended Vacations	8
Make-Up Work, Tardy Procedure, and Dismissal	9
Dismissal (continued), Parent Pick Ups and Student Walkers	10
Bus Transportation, Bus Conduct, Parent Phone Calls regarding Transportation and Safety	11
School Enrollment/Immunizations, Withdrawal Requirements, Requesting Copies of Student Records and Emergency Forms	12
Emergency Forms (continued), In Case of Illness or Accident, Contagious Disease or Health Condition and School Nurse	13
Medication and Legal Child Custody / Restraining Orders	14
Parent/Teacher Communication, Visitors/School Visitation and Parent/Teacher Conferences	15
Early Sign-Out, Messages to Students, Emergency Evacuation Instructions, Confidentiality Statement and Volunteers	16
Volunteers (continued) and School Lunch	17
Discipline, Philosophy, Breakage and Damage of School Property, Physical or Verbal Offenses and Fidget Spinners/Toys/Money	18
Cell Phones/Electronics, Homework and Field Experiences	19
Lost and Found, School Books and Equipment, Student Dress Code, and Classroom Celebrations	20
Recess, Reporting and Grading Philosophy and STAAR	21
Important Dates	22
Contacts	23



RUBY L. THOMPSON ELEMENTARY SCHOOL

6121 Tierwester Street Houston, TX 77021

713-746-8250 713-746-8104 fax

Erica Manuel, Principal

Chante Gary, Assistant Principal

Nastassya White, Teacher Specialist

<http://es.houstonisd.org/thompson>

It is the policy of the Houston Independent School District not to discriminate on the basis of age, color, handicap or disability, ancestry, national origin, marital status, race, religion, sex, veteran status, or political affiliation in its educational or employment programs and activities.

THOMPSON ELEMENTARY STUDENT HANDBOOK 2022-2023

The Thompson Handbook has been written to help your son or daughter gain the greatest possible benefit from his or her school experience.

Thompson needs your help and cooperation. It is important that every student and parent understand the handbook and follow the rules/guidelines set forth in the handbook. Please read and discuss the Handbook with your child. Afterwards, you and your child ***must*** sign this form and ***return*** the form to the school. Thanks for your cooperation and support.

Student Signature

Date

Parent or Guardian Signature

Date

Grade _____

Homeroom _____

Place original form in student's cumulative folder and submit a copy to the main office.



RUBY L. THOMPSON ELEMENTARY SCHOOL

6121 Tierwester Street Houston, TX 77021
713-746-8250 713-746-8104 fax

Erica Manuel, Principal
Chante Gary, Assistant Principal
Nastassya White, Teacher Specialist
<http://es.houstonisd.org/thompson>

It is the policy of the Houston Independent School District not to discriminate on the basis of age, color, handicap or disability, ancestry, national origin, marital status, race, religion, sex, veteran status, or political affiliation in its educational or employment programs and activities.

THOMPSON ELEMENTARY STUDENT HANDBOOK 2022-2023

The Thompson Handbook has been written to help your son or daughter gain the greatest possible benefit from his or her school experience.

Thompson needs your help and cooperation. It is important that every student and parent understand the handbook and follow the rules/guidelines set forth in the handbook. Please read and discuss the Handbook with your child. Afterwards, you and your child ***must*** sign this form and ***return*** the form to the school. Thanks for your cooperation and support.

Student Signature

Date

Parent or Guardian Signature

Date

Grade _____

Homeroom _____

Place original form in student's cumulative folder and submit a copy to the main office.



How Can We Help You?

<http://es.houstonisd.org/thompson>

It is requested that parents call the school if their child is going to be absent or tardy for that day. Tardy students arriving after 8:00 am must be escorted into the building by a parent and/or guardian and be signed into school.

Please call 713-746-8250.

If you have any questions or concerns, do not hesitate to call the school. We will gladly assist you in any way we can.

All faculty/staff members or school administration can also be reached by e-mail. You may check the school's website for e-mail addresses or contact the main office for assistance. You will receive a response from your e-mail within 48 hours.

WE WORK TOGETHER TO EDUCATE YOUR CHILDREN

Principal
Assistant Principal
Teacher Specialist

Wrap Around Specialist
Counselor

Administrative Assistant
SIMS Clerk
Clerk
Clerk
Clerk

Nurse

Plant Operator

Administration

Erica Manuel
Chante' Gary
Nastassya White

Instructional Support Staff

Cassandra Brooks
Carvalyn McClellan

Office Personnel

Samuel Braziel
Bridget Pickron
Threcie Miller
Fabrece Knox
Shaunte Lee

Health Services

Nida Savani

Custodial

Ricardo Posada



Ruby L. Elementary
“Soaring Beyond Expectations”
 6121 Tierwester Street | Houston, TX 77021
 713-746-8250 Main Office | 713-746-8104 Fax
Erica Brame-Manuel, Principal
Chante’ Gary, Assistant Principal
Nastassya White, Teacher Specialist
Carvalyn McClellan, Counselor
Samuel Braziel, Administrative Assistant

Staff Roster
2022-2023

Grade Level	Teacher	Content Area
ECSE	Sarah Barden/ Tilman and Sanders (Teaching Assistants)	Self-Contained
Pre-Kindergarten	*Jason Fletcher	Self-Contained
Pre-Kindergarten	Sandy Johnson	Self-Contained
Pre-Kindergarten	Necole King	Self-Contained
Pre-Kindergarten	Jekaya Simmons	Self-Contained
Kindergarten	*Deshawn Johnson-Beatty	Self-Contained
Kindergarten	Jessica Trader	Self-Contained
1 st Grade	*Shalunda Gaines	Self-Contained
1 st Grade	Autumn Gray	
1 st Grade	Tonja Robinson	Self-Contained
SLL	Pamela Perry/ Rhodes (TA)	Self-Contained
2 nd Grade	Devaun Howard	Self-Contained
2 nd Grade	StaceyAnn Simpson	ELAR/SS
2 nd Grade	* Latosha Walls	Math/Science
3 rd Grade	*LaGina Stephens	Math/Science
3 rd Grade	Suzanne Goudeau	ELA/SS
4 th Grade	*Alisa Daniels	ELA/SS
4 th Grade	Tonya Sanders	Math/Science
5 th Grade	*Donna Booker	Science
5 th Grade	Nicole Nollie	Math
5 th Grade	Dalnika Shanks	ELA/SS
Core Enrichment	*Ratessalyn Burton, Michael Murray, Leo Rosebure & Joi Taylor	Math Lab, PE, Music & Library
Resource/*Sped Chair	*Porter/Biggers (TA)	Resource/Pull-Outs
SLL (3 rd -5 th)	C. Steele/ Perez & Cook	Self-Contained
Intervention Team	Mary Colbert – Reading Sheila Celestine-Ford - Math	Instructional Support: Coaching & Small group support

***Team Lead**

Plant Operator: *Posada

Front Office Staff: Lee, Knox, *Miller & Pickron

Custodial Staff: Cecelia, Lorena, Jackie & Nguyen

Thompson Elementary Motto

“Soaring Beyond Expectations”

Mission Statement

The mission of Thompson Elementary is to create a challenging learning environment that encourages high expectations for success through development-appropriate instruction that allows for individual differences and learning styles. Our school promotes a safe, orderly, caring, and supportive environment. Each student’s self-esteem is fostered by positive relationships with students and staff. Therefore, Thompson Elementary respects the individual needs of children; fosters a caring and creative environment; and emphasizes the social, emotional, physical, and intellectual development of each child.

School Vision

We are dedicated to improving academic achievement, school culture, and community engagement by enhancing students’ educational experience through differentiated instruction, technology integration, and effective teaching practices.

Literacy Plan Mission Statement

The mission of the Ruby L. Thompson Literacy Plan is to effectively prepare and motivate students to successfully exceed grade level promotional standards in K-5th grades through differentiated instruction, student centered intervention, and effective teacher lesson plans with an emphasis on literacy across all content areas. Students, parents, and all faculty will collaboratively promote literacy instruction daily.

Critical Success Factors

- **Academic Performance**
- **Use of Quality Data to Drive Instruction**
- **Leadership Effectiveness**
- **Increase Learning Time**
- **Family and Community Engagement**
- **School Climate**
- **Teacher Quality**



SCHOOL HOURS

Office Hours	7:05 a.m. - 4:00 p.m.
School Hours	7:30 a.m. - 3:00 p.m.
Breakfast in the Classroom	7:30 a.m. - 7:45 a.m.

ARRIVAL TO SCHOOL

Doors open for students at **7:15 a.m.** Parents should not leave students at school before this time. There will be no adult supervision prior to 7:05 a.m.

Staff will be on duty as of **7:15 a.m.** Should a student arrive excessively early, a phone call will be made to the parent(s) to remind them of the school's policy and our concern for your child's safety.

Parents should drop students off at the cafeteria/auditorium on the Griggs Street side of the campus. After **7:30 a.m.**, students should enter through the front door/main entrance of the building.

For the safety of students, entry into the building is only from the main doors or the cafeteria. **Please do not send your child to school late, after 7:45 with breakfast since bringing food into the classroom during instruction is a disruption.**

ATTENDANCE

Students are expected to attend school daily for the entire instructional day. Any deviation from these hours is a serious disruption to the student's educational program. Attendance is taken each day at **9:30 a.m.** Students arriving after this time will be counted absent.

The only acceptable excuses for absences are personal illness, serious illness in the family, death of a close relative, or an observance of a religious holiday. Students who have medical appointments are not counted absent if they return to school with a statement from the doctor. ***Prolonged absences have an impact on your child's learning and may hinder his/her educational progress. Please provide the school with a written note from the doctor for prolonged absences.***

If your child is going to be absent or tardy, a parent or legal guardian is required to call the school as early as possible, prior to 7:45 a.m., on the day of the absence.

If we receive no parental phone call, school personnel will attempt to call the home to verify the absence. A meeting may be required with the guidance office and/or administration for students with attendance concerns.

If no excuse is provided for the absence, it is considered an unexcused absence. If your child is absent during the day, he/she may not attend afternoon or evening activities. Should your child be absent for 3 or more days, the school nurse may require a doctor's note.

EXTENDED VACATIONS

Thompson Elementary believes strongly in the importance of regular attendance. Parents are strongly urged not to schedule family vacations during school days and not to extend the scheduled vacation periods. Parents of students who do take vacations during school time should inform the building Principal at least one week in advance explaining the length of time for the vacation and the reason.

Should a parent choose to keep a student out of school for reasons other than illness or extenuating family circumstances, teachers will provide the normal range of assistance upon the student's return to school. The school will not assume responsibility for providing individual tutoring or extensive individual help for the student when he/she returns.

MAKE-UP WORK

If a child is going to be absent for an extended length of time, please call the school to make arrangements for any missed work that can be done at home. These assignments can usually be picked up at the end of the school day with the request being made prior to 9:00 a.m. Teachers will make every effort to assist students who need extra help in making up work due to illness. Students will have one day beyond the number of days they were absent to complete make-up work.

TARDY PROCEDURE

Promptness to school is important. Students are to be ready to begin the day in their classroom promptly at **7:30 a.m.** Students that enter the classroom tardy miss pertinent information that is essential to their daily success. Students arriving after 9:30 a.m. should see Ms. Pickron before reporting to class.

Students arriving after **7:45 am** must be signed in by a parent and/or guardian upon entry into the building.

In cases of habitual tardiness, parent contact will be made, and appropriate discussion will take place to remedy the problem.

DISMISSAL

For the safety of all students, no student will be dismissed early without a parent or legal guardian coming to the main office to sign the student(s) out. You will be required to provide identification to school authorities, so please have identification readily available.

Should there be a need for someone other than a parent or legal guardian to pick up a student early, the office will verify that the person is listed on the student's enrollment card or on the emergency pick up form.

No child will be dismissed to a parent through a building teacher or other staff members. All dismissals must go through the main office. Parents are asked to wait at the office for their child once dismissal arrangements have been made. Only the names appearing on the student's emergency form will be allowed access to the student. If your contact information changes, it your responsibility to alert the office immediately.

Try to establish a routine that your child understands and can follow. If you must change the routine, under any circumstances, be sure your child knows the changes before he/she leaves home in the morning. **Any changes to the regular routine must be in writing and communicated to the front office/or the classroom teacher. If changes happen during the school day, parents must notify the front office BEFORE 2:00 p.m.**

The school asks that you keep early dismissals to a minimum. Please arrange appointments on half days, or prior to or after school hours to the greatest degree possible so that time on

learning is not lost. Early dismissals or tardies **will** affect the student's school attendance records.

- Students who walk to and from school **MUST** use crosswalks, obey the crossing guards, and always use caution.
- Parents are not to park in the fire zone in the front or side of the school. Cars parked in the fire zone will be ticketed or towed.
- To avoid traffic congestion, please do not park in the drop-off/pick-up line.
- Students are not allowed to wait across the street, at the playground, or anywhere unattended for their ride. All students waiting for a ride must be picked up in the car rider line on Tierwester Street.
- All students who ride HISD and private Day Care buses will be picked up in the bus area located on Griggs Street.

The policy of the Houston Independent School District does not provide for supervision of students before or after school hours.

PARENT PICK UPS

School personnel will accompany students being transported by car to the parent pick-up line at the Griggs Street entrance to the school. Please follow the signs for parent pick up. Because of the number of students being transported by personal vehicles, as well as safety concerns, parents are required to wait in the parent pick up line to pick up children. Parents must remain in line as well as in their vehicle. In an effort not to interrupt dismissal procedures students will not be able to be signed out for early release after 2:00 pm. ***Students picked up after 3:15 will incur a late fee of \$1.00 per minute. Students with late pick-up fees will not be permitted to participate in afterschool activities, clubs or school event until balances are cleared.***



STUDENT WALKERS

Students walking home from school will leave from the car pick-up area at the front of the school. **Students who do not walk home on a regular basis must have a note from their parent or guardian giving permission for them to walk at the end of the school day.** Notes are to be given to the classroom teacher notifying the school of the change to ensure student safety.

BUS TRANSPORTATION

Students, who ride buses and/or vans, will be escorted to the auditorium. If your child rides a private van and/or bus, please be sure the provider is aware of school hours.



BUS CONDUCT

Persons who transport students via contracted transportation services insist on proper language and conduct by riders. Contractors and drivers shall exercise care for the safety and comfort of riders and shall have full authority over the management of conditions and conduct of students while en route.

Administrative guidelines and/or regulations shall include thorough compliance with the following and will be defined in the HISD Student Code of Conduct.

PARENT PHONE CALLS REGARDING CHANGES IN TRANSPORTATION

Due to concerns regarding student safety, **Thompson School personnel cannot accept messages over the telephone requesting that the child's mode of transportation home be changed.** Arrangements will need to be made in advance, with the normal mode of transportation only being altered under the following two conditions:

1. The child comes to school with a signed and dated note from the parent. The note would be given to the classroom teacher, who would then forward it to the office.
2. The parent personally comes into the school office and makes the request. The office will call the child so the message can be relayed to him/her. The parent will also be asked to put the request in writing.

If the above arrangements have not been made, the child will be sent home according to their usual mode of transportation due to safety concerns.

SAFETY

For the safety of students and school personnel, after **7:35** a.m., entry into the building is through the main entrance on Tierwester St., where you will receive a visitor's pass. Please **DO NOT** ask students and/or school personnel to allow you entry through any other door.

Early childhood parents, we are aware that you must check your child in and out; however, you are required to use the main doors and/or auditorium doors in the morning. In the afternoon, you must use the main doors. This is for the safety of students at Thompson Elementary.

SCHOOL ENROLLMENT /IMMUNIZATIONS

Any student entering school is required to be fully immunized in accordance with state health laws. Parents are required to give written proof of immunizations with specific dates signed by a physician. The school nurse will review the health record and notify the parents of any missing data. **Students without the proper/updated immunizations can be withdrawn from school.**

WITHDRAWAL REQUIREMENTS

If your family is moving to another school, district, or state, we request that you notify the Attendance Clerk at least three days in advance of withdrawal so that we can start the paperwork involved. In addition, we will need time to check in materials and clear the record of any outstanding books and/or technology.

If parents decide to withdraw their child/children from Thompson Elementary School, the following things should be done:

- Complete Withdrawal Confirmation Form
- Student must return all books/technology
- Students must clear any debts
- Notify the Attendance Clerk of the withdrawal and the new school's name and location
- Parents may request copies of student records

Parents are asked to notify the school, as soon as possible, if they will be withdrawing their child from school. Records will be mailed to the receiving school.

REQUESTING COPIES OF STUDENT RECORDS

Copies of student records may be requested from the registrar Ms. Pickron. Requests must be filled out completely in person. The Registrar will check your state identification and relationship in reference to the child/children who are enrolled here on our campus. There is a 24-hour turnaround time for the registrar to prepare your documents. You will be notified when the requested documents are ready for pick up. The first set of records are provided free of charge. Additional copies will be provided at the cost of \$.10 per page.

EMERGENCY FORM

An Emergency Form for each student, completed by parents, will be on file in the Nurse's Office and the Main Office. It needs to be filled out at the beginning of each school year and returned to school within the first 2 weeks of school. This form must be kept up to date. It should include the following information:

1. Parent(s) or guardian(s) name(s)

2. Complete and up-to-date address and phone numbers
3. Home phone and parent(s) work phone
4. Emergency phone numbers of friends or relatives
5. Physician's name and phone
6. Medical alert information

Please inform the office of any changes that occur during the year relative to the information on the emergency form. It is very important that emergency forms be filled out completely and updated as needed by the parent or guardian.

IN CASE OF ILLNESS OR ACCIDENT

If a student becomes ill or is injured during school hours, the school nurse is contacted. The school nurse will determine the seriousness of the illness or injury and upon his/her determination, a parent or legal guardian will be contacted. Upon students being referred to the school nurse, parents will be contacted by the nurse. The student will be returned to class unless he/she has a fever or shows visible signs of an illness. If neither parent nor legal guardian can be contacted, those persons listed on the emergency form will be contacted. If warranted the family physician will be contacted. In emergencies, it may become necessary to transport your child by ambulance to an emergency care facility.

It is crucial that the school always have current information regarding students. If you change your address, home telephone number, work number or any other information, please inform school office personnel at once or send written notification. This is especially important in case of student emergencies.

CONTAGIOUS DISEASE OR HEALTH CONDITION

Students with any contagious health ailments cannot be sent to school until the condition is properly treated and is no longer contagious. ***Students should be fever free for 24 hours or more before returning to school.*** The school nurse is responsible for the determination of the student's re-entry into school.

SCHOOL NURSE

The purpose of the school nurse is to enhance the education process by the modification or removal of health-related barriers to learning and by promotion of an optimal level of wellness.

The following requirements need to be met in order for your child to receive any medications:

1. A signed permission slip from a parent must be on file.
2. A signed medication order sheet from the child's doctor. This includes all prescriptions and over the counter medications.

Any medication that your child is to take, including Tylenol and cough drops, will not be supplied by the school. All medications must be supplied by the parents in the original containers with the child's name properly labeled on the container.

Should you have any questions regarding your child's health, please do not hesitate to

contact the school nurse.



MEDICATION

Medicine should always be given at home when possible. Students may not keep medicine on them, in a desk, backpack or purse. This includes Tylenol, allergy medication, etc. If school personnel administer medication, the following procedures will be followed:

- Parent/guardian must bring all medications to the school. Students may not transport any medication to or from school.
- All medicine must be ordered by a doctor.
- All medicine must be in the original bottle with a pharmacy label, which must include the student's name, doctor's name, date ordered, name of medicine, the dose and time to be given at school.
- No medicine will be given without a consent form signed by a parent/guardian.
- An authorization for Medication Form is available in the school clinic.
- The administration of medications will be handled in compliance with applicable state and local policies, laws, and regulations.
- Medications will be kept in a lockable storage area under the supervision of the school nurse and/or other school administration.
- No medications may be kept in any location other than the clinic.

Possession and/or administration of any drugs or other controlled substance(s) on school grounds and or school sanction events/activities by students or others may constitute violation of the law. Please refer to the HISD Code of Student Conduct.

LEGAL CHILD CUSTODY/RESTRAINING ORDERS

Should there be a change in normal custodial arrangements for your child/children, it is imperative that the principal, and/or Records Clerk be informed as soon as possible. A letter specifying such from the adult with custodial rights and a copy of the corresponding legal, judge signed documents are required to be sent to the principal for adherence. A copy will be placed on file and associated personnel will be informed of the change.

The same procedure is required should there be a restraining order in effect relative to the child. Each time there is an extension or alteration to such order, the legal documentation verifying such must be provided to the school for adherence to it. If unsure about documentation provided, the principal will contact HISD's Legal Services Department to determine next steps/how to proceed.

PARENT/ TEACHER COMMUNICATION

We encourage communication between parents and teachers; however, because of their teaching responsibilities, teachers will not be called to the phone, or office, during instructional hours (7:30 a.m. - 2:55 p.m.). **If you would like to talk with the teacher about your child, please contact the school, or email your child's teacher. Please do not "drop by" during instructional time expecting to conference with the teacher at the spur of the moment.** You will receive a call back from the teacher within 48 hours.

If at any time you have a concern regarding your child's education or school procedures, **PLEASE BEGIN WITH YOUR CHILD'S TEACHER.** If after talking to the teacher you still feel concerned, please call the front office for an Administrator at 713-746-8250. A resolution will be worked out with team effort if needed.

VISITORS/SCHOOL VISITATION

Parents are always welcome to visit the school. For all students' protection, all visitors must have valid photo I.D., sign in at the front office, and wear a visitor's badge before going to the classrooms. Parents must have a completed VIPS form and have an approved background check. Parents should contact the classroom teacher before visiting the classroom to ensure that special activities have not been planned for that day. Any unplanned interruption of the instructional day will **not** be permitted. Parents wishing to discuss a problem with a teacher should call the school, email, or write the teacher a note to set up an appointment. This prevents disturbing the classroom learning process. **Classroom visits/observations will last no longer than 15 to 20 minutes. The principal reserves the right to deny visits that disrupts the educational process.irate parents will not be escorted to teacher's classrooms for any reason.**

PARENT/TEACHER CONFERENCES

Every child benefits from good parent-teacher relationships. Conferences are helpful in keeping the lines of communication open. The parent, teacher, or administration may request conferences. Teachers are not permitted to take class time away from their students to hold a parent conference. Please do not show up at your child's classroom in the morning and expect a conference. Teachers have many duties in the mornings as they are preparing for their day. Our wish is to meet with you in a quiet, relaxed, private atmosphere to discuss your needs and concerns. Parent/teacher conferences can be scheduled during the teacher's conference period. Whenever you believe a conference is needed, please contact the teacher(s) of your child/children. The teacher will notify you with the date and time of the conference, in some instances conferences may be held virtually.

When teachers are having conferences with parent(s), time is somewhat limited. However, if you wish to discuss your child's needs in greater detail, you may call for follow-up information or set another conference time. Other conferences may be arranged whenever a need arises by

the parent or teacher.

EARLY SIGN-OUT

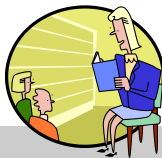
- After **2:00pm** students will not be released for early sign-out
- When parents/guardians pick up students **before 2:00 PM**, they must sign the child out in the front office.
- The front office must be provided with proper identification which is required (TX Drivers License, or TX Identification Card).
- Students will not be released to anyone who is not on the Student Enrollment and/or Emergency Contact Forms. Students **will not** be released to anyone under the age of 18 years old.

MESSAGES TO STUDENTS

Please make personal and family arrangements with your child at home prior to him/her coming to school. Also, keep in mind that there is no public phone for student/parent use. It would be impossible to allow use of the school phone for outside calls unless it was an emergency.

EMERGENCY EVACUATION INSTRUCTIONS

The alarm system in Thompson Elementary is a loud, continuous horn, and when activated sends a direct signal to the Fire Department. There will be numerous practice evacuation drills and other types of emergency drills during the school year. Emergency and fire evacuation instructions for Thompson are posted in the respective areas of the building. Students and staff will be permitted back into the building when it is deemed safe by public safety officials and the building principal. In the case of some evacuations, students and staff may go to the HISD Police Station (the Old Thompson), located at 3500 Tampa St or to the St. Peter the Apostle Church, located at 6220 LaSalette, Houston, TX 77021, when circumstances warrant.



CONFIDENTIALITY STATEMENT

Information about our students is confidential and should never be discussed in public places or where the discussion may be overheard by others. Thank you for respecting the privacy of our children and their families.

VOLUNTEERS

All parents are encouraged to participate as a school volunteer during the school year. Many enriching and worthwhile experiences are afforded our children through volunteer help from parents. With this support, teachers can provide more direct instruction to students.

Parents interested in volunteering time and services are requested to contact the VIPS (Volunteers in Public Schools) Coordinator at the school. Upon contacting the school, you will be notified of who the person of contact is for the VIPS program.

General guidelines for volunteers include:

1. Volunteers must register using VIPS online and submit acceptable form of identification for the annual criminal background check. Please see Mrs. Miller to complete thorough onboarding process.
2. Volunteers are requested to sign-in at the main office upon entering the building and sign-out upon completion of services.
3. Volunteers are to comply with all HISD and school regulations while on campus.
4. Volunteers must respect the confidentiality of teachers and students. This includes not grading papers or recording grades in grade books.
5. Volunteers must wear appropriate clothing for a school setting.
6. Volunteers must always be under the supervision of a teacher or staff member/district personnel. Volunteers are not to supervise students or escort them to different locations on campus, at any time.
7. Volunteers are to use appropriate channels of communication for comments and suggestions.

Volunteers are to observe, support, and adhere to guidelines set by the principal.

We greatly appreciate any amount of time and support volunteers are able to offer. Please remember, all field experience chaperones must be VIPS cleared each school year.



SCHOOL LUNCH

PAYMENT OF SCHOOL LUNCHES

Lunch Applications for free and reduced lunch will be sent home the first week of school. Lunch applications **must** be completed via online or using the paper application form. The online method will get a rapid response. **Lunch is free for all students at Thompson Elementary School; however, applications still need to be filled out.**

Breakfast Breakfast is served daily in the classroom and is available to all students free of charge.

Breakfast starts at 7:30 a.m. and ends promptly at 7:45 a.m.

Delivery services are not permitted to drop off food for students UberEATS, etc.

Additional Snacks Money can be sent for additional snacks, or it can be pre-paid online.

Online website <http://www.houstonisd.org/Page/91116>

DISCIPLINE: STATEMENT OF PHILOSOPHY

The Thompson School Community believes that all students can and will learn the skills needed to function appropriately in the school and community if given instruction, enough time and support. Students are expected to be responsible for making appropriate decisions and choices about achievement, surroundings, interactions, and safety. To assist students in getting the greatest benefit from their school experience, while individually developing responsibility and learning to control their own behavior, certain guidelines must exist. At all times, HISD's Code of Student Conduct will be enforced.

Thompson's Discipline Management Plan is based on the recognition that behavior can be modified, controlled, and improved through instruction and the adoption of the expectations and guidelines. **Thompson enlist the participation and support of ALL parents/guardians in upholding high standards for student behavior.**

Thompson Elementary Discipline Plan:

- **School-wide** rules created by the students/staff and teacher.
- **School-wide** rewards and consequences formulated by the staff member in charge.
- **Frequent** review of the expectations, rewards, and consequences.
- **Weekly** communication from the teacher to the parent/guardian regarding student behavior.
- **Required Face-to-Face Conference** if behavior becomes repetitive.
- **Referral to the office** for continued misbehavior **AFTER** Teacher/Parent conference.
- **Referral to the office** for offenses in Levels 3 or above (Consequences may vary.)

BREAKAGE AND DAMAGE OF SCHOOL PROPERTY

Thompson Elementary School is your school. You should be proud of it and care for it. Writing on the desks or walls, putting gum under the desks and tables, breaking windows, or otherwise destroying property reflects directly on you. Any student found damaging or defacing property at Thompson Elementary School will be subject to disciplinary action, and the cost of repairs will be paid for by the students and parents.

PHYSICAL OR VERBAL OFFENSE(S)

If a student issues a verbal or physical offense to another student/staff member, appropriate disciplinary action will be taken. Depending on the seriousness of the offense, the action taken could range from a reprimand to school suspension. It is always extremely important for students to understand the use of appropriate language and actions at all times when speaking to other students or staff members.



FIDGET SPINNERS/TOYS/MONEY

Bringing toys, collectables, or articles of value to school is not allowed unless they have been brought with teacher permission for a school project. Students are also strongly discouraged from bringing large amounts of money to school. Under no circumstances are weapons or articles that resemble weapons in any manner allowed in schools. Items that disrupt the educational process are not permitted. The school will not accept responsibility for lost, broken, or stolen items. Fidget Spinners are toys and should not be brought to school. They are a huge

distraction to the learning environment.



CELL PHONES/ELECTRONICS

Cell phones/electronics are not allowed on during the instructional day, if not used for instructional purposes. This includes vibrate mode. All cell phones and electronic media must be powered off and placed inside the student's backpack until the student leaves the campus. Cell phones, in use, will be confiscated and parents will be contacted. The first incidence will constitute a warning, and the phone will only be released to the parent/guardian. The second offense will result in the phone being confiscated and parents having to pay a fee of \$15 to get the phone back. **Thompson Elementary will not be responsible for cell phones/electronics that are broken, lost, or stolen.**

HOMEWORK

Homework is an integral part of the school routine to foster greater student learning and understanding. It is an extension of the learning that takes place in school and increases in amount and expectation with each grade level. Homework can provide practice that reinforces classroom learning and can provide opportunities for independent study, research, and creative thinking. An effective homework program also supports the conviction that learning is not limited to the normal classroom experience, but an extension that works to expand the vital home/school connection. Failure to complete homework will be addressed and dealt with at the individual teacher's discretion.

FIELD EXPERIENCES

Field experiences have an educational value and, therefore, every student is encouraged to participate. Parents will be informed well in advance of upcoming field experiences. All students are required to have a signed permission slip on file with the classroom teacher at least 48 hours before the scheduled field experience.

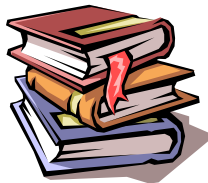
Parents are often encouraged to chaperone on field experiences. Although we encourage all students to participate in field experiences, it may become necessary to require a parent to attend due to habitual inappropriate behavior from their child. The teacher will make the request to the principal who will determine whether the parent's presence is needed. If such is the case, students and parents will be given at least two days notice.

If medication must be given to a student during a field experience, written permission from a parent/guardian must be given to the school nurse to allow her to delegate that responsibility to the teacher if a nurse is not going on the field experience.

Under no circumstances will extraneous people (children of chaperones, visiting relatives, etc.) participate in a field experience.

LOST AND FOUND

Articles that have been found in the school building, on school grounds, or on school buses are placed in the Lost and Found area where their owners may claim them. After a certain length of time, unclaimed items will be donated to a local charity. Parents are requested to label all removable articles of clothing, lunch boxes, and important school supplies with the child's first and last name. Lost and found items will be kept in the cafeteria/multi-purpose room in the custodian's storage area. Items, not claimed, will be donated to a shelter/charity in December and May of each school year.



SCHOOL BOOKS AND EQUIPMENT

Each child is responsible for his/her textbooks, school equipment, and borrowed school library books. Any lost or damaged books and equipment must be replaced. The principal will determine the cost according to the amount of damage and the age of the book. If a library book has been lost and payment has not been forthcoming, the student will not be permitted to borrow additional materials.

STUDENT DRESS CODE

Student appearance is the responsibility of the student and his/her parents. Thompson's dress code is khaki pants and/or blue bottoms with a white, hunter green, yellow polo shirt, or school t-shirt. Students not in dress code will be required to call home and obtain uniform clothing.

Parents should ensure their children are attired correctly to avoid having to come and bring the correct uniform. Dress code will be strictly enforced. Students are not allowed to wear hoodies (inside the building) or Crocs. In addition, chains, unsafe jewelry, or any other kind of accessory that poses a safety hazard to the student or others will not be allowed. With the purchase of a PTO shirt students are able to wear the PTO spirit shirt on Fridays only with jeans. No exceptions. **Students with three or more dress code violations will receive a consequence.**

CLASSROOM CELEBRATIONS

Classroom celebrations will occur at certain times during the school year.

These celebrations will take place during the last 30 minutes of instructional time and should not take away from the instructional day.

Classroom treats to acknowledge a birthday should be done during the last 15 minutes of the school day; the teacher must be informed 48 hours in advance in writing or by email. Treats can be dropped off in the office to be delivered to the classroom.

RECESS

All classes may have a thirty (30) minute recess. Whenever it is possible, and in the best judgment of the administrator, recess time will be spent outside the building.

Students will be supervised, by the classroom teacher, during recess. Parents will be contacted, by the teacher, for incidences that take place during recess.

PLEASE NOTE: It may occasionally be necessary to keep a child inside during recess due to inappropriate behavior or lack of academic effort during time of learning. Teachers may refer any continued problems to the proper school administrator.

REPORTING AND GRADING PHILOSOPHY

It is our intent to convey an accurate report of children's progress during their stay at Thompson. To this end, a "Student Report Card" is issued to each student at district-scheduled intervals.

Progress Reports are issued halfway through a marking quarter. The purpose is to keep parents informed of their child's overall progress. The report highlights both a child's strengths and areas in need of improvement.

Parents are required to sign the report card /progress report and return it to the classroom teacher.

STAAR (State of Texas Assessments of Academic Readiness)

The STARR Test in Reading and Math is administered to grades 3 - 5 each year, and grade 5 is assessed in Science. Student scores are reported at the individual level, and then aggregated to the classroom, school, district, and state levels. Parents will receive a summary page depicting their child's performance once the scores are received by the district office and campus.



Holidays

- September 5, 2022
 - October 5, 2022
 - November 21-25, 2022
 - December 22, 2022 -January 6, 2023
 - January 16, 2023
 - March 13-17, 2023
 - March 31, 2023
 - April 7, 2023
 - April 21, 2023
 - May 29, 2023
- Labor Day
 - Fall Holiday
 - Thanksgiving Break
 - Winter Break
 - Martin Luther King Jr. Day
 - Spring Break
 - Chavez-Huerta Day
 - Spring Holiday
 - Spring Holiday
 - Memorial Day

Grading Periods (Six Weeks)

- Aug. 22 – Sept. 30
- Oct. 3 – Nov. 4
- Nov. 7 – Dec. 21
- Jan. 9 – Feb. 24
- Feb. 27 – Apr. 14
- Apr. 10 – May 31

Report Card Dates

- October 7, 2022
- November 11, 2022
- January 13, 2023
- March 3, 2023
- April 20, 2023
- May 31, 2023

Save this page and place it on the refrigerator to keep up with important dates.

Contacts

Transportation	Bridget Pickron
Testing Coordinator	Carvalyn McClellan
504	Carvalyn McClellan
IAT District Liaison	Joi Taylor
Special Education Chairperson	Kasai Porter
Title 1/ Summer School	Joi Taylor
Field Trips	Carvalyn McClellan
Enrollment/Student Records/Attendance	Bridget Pickron
Gifted and Talented/Dyslexia	Carvalyn McClellan