

## MEMORANDUM

November 7, 2012

TO: Board Members

FROM: Terry B. Grier, Ed.D.  
Superintendent of Schools

SUBJECT: **ADVANCED PLACEMENT (AP) REPORT: 2011–2012**

CONTACT: Carla Stevens, Research and Accountability, 713-556-6700

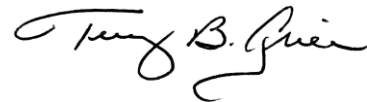
The Department of Research and Accountability has completed the 2011–2012 Advanced Placement (AP) Report. The AP program directly supports HISD's Strategic Direction for Core Initiative 3: Rigorous Instructional Standards and Supports. The AP Program provides high school students with the opportunity to take college-level courses and earn college credit. A possible 37 AP exams are offered in 22 subject areas, and exams are administered over a two week period each year in May. The AP grade scale ranges from 1 to 5, and a score of 3 or higher qualifies a student to earn advanced placement, college credit, or both. Some key findings are as follows:

- Over the past six years, the number of Advanced Placement (AP) exams taken by HISD high-school students has increased from 9,088 in 2007 to 23,227 in 2012.
- While the number of exams scored at a 3 or higher has increased from 4,304 in 2007 to 7,106 in 2012 at the high-school level, the percentage has decreased from 47 percent in 2007 to 31 percent in 2012.
- For the district as a whole in 2012, 11,543 out of 32,184, or 36% of students in grades 10-12 were enrolled in at least one AP course. Of students enrolled in an AP course, 10,573 completed at least one AP course (92%).
- In 2012, Hispanic and African American students represented the largest student groups in grades 10 through 12; however, far fewer than half Hispanic and African American students were enrolled in an AP course. By contrast, more than half of White and Asian American students in grades 10-12 were enrolled in at least one AP course.
- Eighty-nine percent of AP exams that were scored at a 3 or higher were linked to students who received an A or B in the AP course. Of the 13,354 AP course grades of either A or B, 37 percent were linked to students who scored at or above a 3 on the AP exam.
- For the classes of 2010 and 2011, HISD trailed Texas and the nation in the percentage of graduates who passed an AP exam with a score of 3 or higher. However, in 2011, HISD outperformed the state and the nation in the percentage of graduates who took an AP exam at some point in their high school career.

**Administrative Response**

Houston ISD's Advanced Placement program continues to focus on providing professional development based on the data indicated in this report as well as what teachers have indicated they need. By working directly with organizations such as College Board and Laying the Foundation, training offered for Pre-AP and AP teachers provides direct instruction on strategies that assist students. In addition, HISD has begun hosting AP Professional Learning Communities for HISD AP teachers to participate in throughout the year. Led by highly effective HISD AP teachers, this program provides participants the opportunity to share best practices and ideas for the AP classroom in 16 different AP subjects. The district's efforts to provide teachers with specific professional development are also aligned to HISD's AP results. The growth in HISD's AP numbers for both participation and performance are an indication of the dedication of HISD AP teachers, administrators and students who have come to understand the importance of this program.

Attached is the complete report including an analysis of districtwide results as well as for all HISD schools that had participating students. Data presented include AP course enrollment, AP course completion, and AP exam participation and performance. Results were analyzed by grade, race/ethnicity, and gender.



---

TBG**Attachment**

cc: Superintendent's Direct Reports  
Chief School Officers  
School Improvement Officers  
Alan Summers  
Nefertari Mundy  
Estibaliz E. Arriaga  
High School Principals



# RESEARCH

Educational Program Report

ADVANCED PLACEMENT (AP)  
REPORT 2011-2012

DEPARTMENT OF RESEARCH AND ACCOUNTABILITY  
HOUSTON INDEPENDENT SCHOOL DISTRICT



## 2012 Board of Education

**Michael L. Lunceford**  
PRESIDENT

**Anna Eastman**  
FIRST VICE PRESIDENT

**Juliet Stipeche**  
SECOND VICE PRESIDENT

**Rhonda Skillern-Jones**  
SECRETARY

**Greg Meyers**  
ASSISTANT SECRETARY

**Paula M. Harris**  
**Lawrence Marshall**  
**Harvin C. Moore**  
**Manuel Rodriguez, Jr.**

**Terry B. Grier, Ed. D.**  
SUPERINTENDENT OF SCHOOLS

**Carla Stevens**  
ASSISTANT SUPERINTENDENT  
DEPARTMENT OF RESEARCH AND  
ACCOUNTABILITY

**Daniel Taylor**  
**Chih-Hsun Huang, Ed.D.**  
RESEARCH SPECIALIST

**Renmin Ye**  
INTERMEDIATE APPLICATIONS  
DEVELOPER

**Ed La Sage**  
RESEARCH MANAGER

### **Houston Independent School District**

Hattie Mae White Educational Support Center  
4400 West 18th Street  
Houston, Texas 77092-8501

**[www.houstonisd.org](http://www.houstonisd.org)**

It is the policy of the Houston Independent School District not to discriminate on the basis of age, color, handicap or disability, ancestry, national origin, marital status, race, religion, sex, veteran status, or political affiliation in its educational or employment programs and activities.

# Advanced Placement 2011–2012

## Introduction

The College Board's Advanced Placement (AP) Program provides participating high school students with the opportunity to take college-level courses and earn college credit, advanced placement, or both. A possible 37 examinations, covering 22 subject areas, are administered in May at participating schools. Ninety percent of colleges and universities grant credit, placement, or both to students receiving a qualifying score (usually 3 or higher on a scale of 1 to 5) on an AP exam.

Studies show that students who take AP courses and exams are more likely to succeed in college. Families may also experience financial benefits if their child receives advanced placement, college credit or both. Other benefits afforded to students include opportunities that lead to scholarships or recognition. The Siemens Awards for Advanced Placement is a scholarship with an award ranging from \$2,000 to \$5,000 given to two students (one male and one female) from each of the 50 states, and the AP program also offers a number of Scholar Awards to AP students who have shown outstanding achievement, which is acknowledged on any grade report that is sent to colleges the following fall. In addition, teachers involved in the AP program benefit from professional development opportunities such as workshops and Summer Institutes (College Board, AP Central, 2008g).

For the 2011–2012 school year, all courses labeled as “AP” by HISD were authorized through the College Board AP Course Audit process. This audit process will ensure that quality courses meeting “AP” requirements are being offered, and that colleges and universities have a venue to review authorized courses offered by secondary schools (College Board, AP Central, 2008f).

## Administration

The Educational Testing Services (ETS) mails out the AP exams along with other exam-related materials to participating schools in April or early May. The AP exams are administered each year in May over a two-week period. Once testing is completed, all AP exams are returned to ETS.

## Scoring

Each examination subject is graded on a scale of 1 (No recommendation) to 5 (Extremely well qualified). Typically, scores of 3 or above qualify a student to receive advanced placement, college credit, or both. Multiple-choice sections are scored by computer. The free-response section is typically scored using a three-step process: development of preliminary scoring standards, establishment of final scoring standards, and the reading. AP examinations may be compared from one year to another through equating (College Board, AP Central, 2004).

## Methods

### Data Limitations

The College Board receives AP data from the Educational Testing Service (ETS). It is important to understand that the extracts are made from a “live” database that changes from one day to the next as scoring and adjustments to individual student records progresses in the months following the examination administration. **Therefore, discrepancies may exist between the three sources of data that are used for AP exam reporting purposes, namely the College Board Reports (hard copy), the AP Online Score Reports, and the College Board (electronic) data file based on the time of the data extract.** AP data for prior years were extracted from the most recent, updated files available at the time of the present report, and data for the current school year were extracted from the July 30, 2012 electronic files.

To provide disaggregated student level demographic information, the College Board AP electronic databases were matched to the Public Education Information Management System (PEIMS) database, and the Chancery End-of-Year (EOY) data files. Since the PEIMS database reflects a snapshot taken on the last Friday in October, those students who were not present would not be included in the database. Students who were identified as enrolled in AP courses were required to be active students as of the EOY database and to have completed the course with a final semester grade or final grade in both the fall and spring semesters of a full-year course.

### **Participants**

Longitudinal test performance from 2007–2012, along with demographic information supplied by students, was reported to HISD for each participating campus by the College Board via printed reports and an electronic database. The 2012 global scores for test performance by subject were extracted from the 2012 College Board Report. These data, together with enrollment data from PEIMS and Chancery, were analyzed. State-level data, including the number of AP subject tests taken along with the percentage of scores that were 3 or above, were extracted from the 2011–2012 College Board Reports. Participation rates for juniors and seniors were calculated by dividing the number of students tested by the PEIMS snapshot of fall enrollment for the same group. Participation rates for juniors and seniors were calculated across the district and by school.

The number of students eligible to complete AP courses consists of those enrolled in both semesters of a two-semester course as per the Chancery EOY database and/or those enrolled in a one-semester course. Completion percentages are based on the number of students eligible to complete and the number completing an AP course.

Course completion was determined by counting those students who received a semester average grade of 70 or higher for both semesters of a two-semester course or receiving a 70 or higher for a one-semester course. Once this number was computed, it was divided by the total number of students who were eligible to complete an AP course.

Mean test scores by gender, race/ethnicity, and economic status for AP subjects were analyzed by comparing mean scores. To determine the percentage of students who scored 3 or above on AP subject tests by race/ethnicity, the total number of tests scoring a 3 or higher was divided by the total number of tests taken for each ethnic category.

### **Data Collection and Analysis**

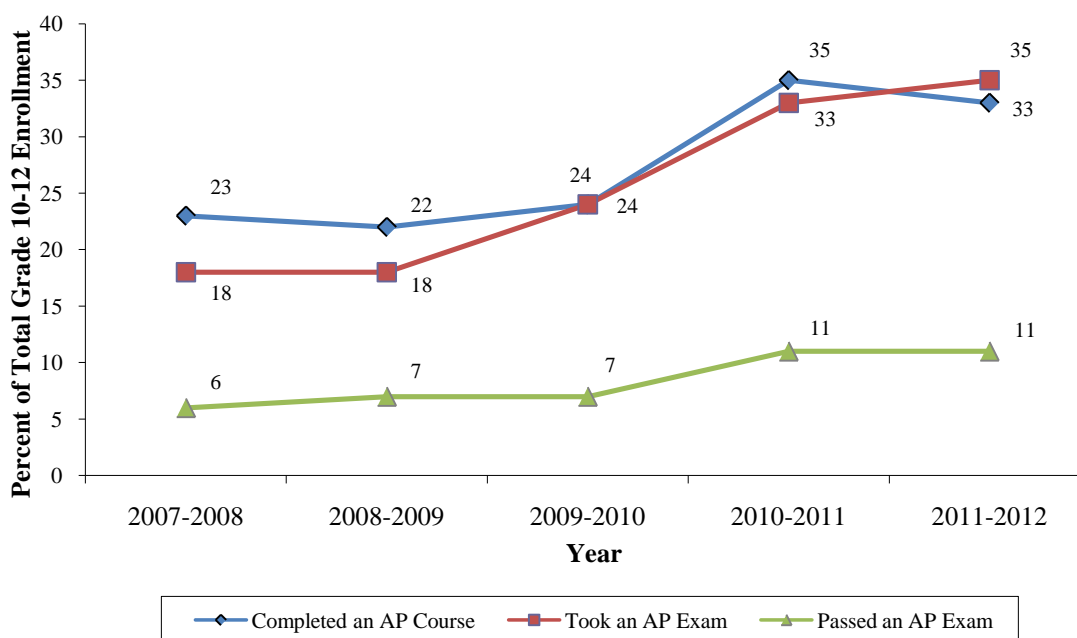
The College Board reported test performance, along with demographic information supplied by the students to HISD. These data included results for all HISD schools that had participating students. These data, together with enrollment data from the Public Education Information Management System (PEIMS) database, were analyzed. Analyses were conducted using the aggregated data by grade, race/ethnicity, and gender. Results were analyzed districtwide and by campus level.

## Results

### Districtwide Participation

The total number of exams taken by HISD students increased to 23,227 in 2012 from 21,347 in 2011, up by 9 percentage points, or 1,880 exams. The percent of exams scored at a 3 or higher was 31 percent, the same as it was in 2011. **Figure 1** shows the percent of students in grades 10–12 who completed at least one AP course, the percent who took at least one AP exam, and the percent who passed at least one AP exam with a score of 3 or higher from 2008 to 2012. Percentages are based on grades 10–12 enrollment and reflect an unduplicated count of students.

**Figure 1: Grade 10-12 AP Participation and Performance**



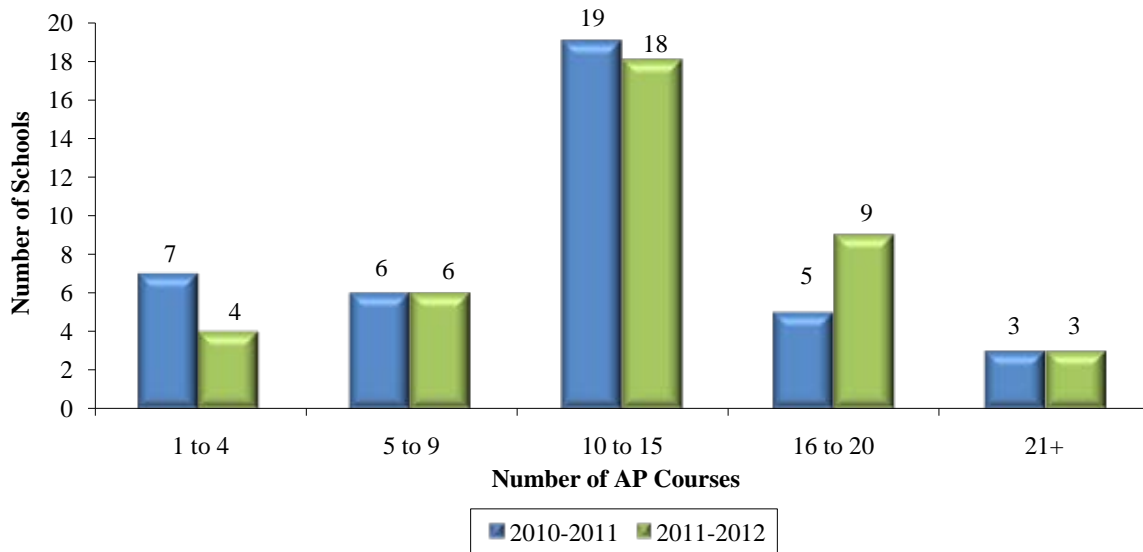
Note: Completion of an AP course is defined as receiving a passing grade at the end of the course.

- Since the 2007–2008 school year, the percentage of students in grades 10 through 12 who took at least one AP exam has increased from a low of 18 percent in 2007–2008 to a high of 35 percent in 2011–2012, an increase of 17 percentage points.
- The percentage of HISD students in grades 10 through 12 who completed at least one AP course has increased from 23 percent in 2007–2008 to 33 percent in 2011–2012, an increase of 10 percentage points.
- Eleven percent of HISD students enrolled in grades 10-12 passed at least one AP exam with a score of 3 or higher in 2011–2012, up from 6 percent in the 2007–2008 school year.

## AP Course Offerings

**Figure 2** shows the distribution of AP courses offered in district high schools for the 2011–2012 school year.

**Figure 2: Distribution of AP Course Offerings, 2010-2011 and 2011-2012**



Note: Includes only campuses offering at least one AP course for the specified years.

- In the 2010–2011 school year, 40 HISD high schools offered at least one AP course, and in 2011–2012, the number of HISD high schools offering at least one AP course remained the same at 40.
- Ten district campuses offered between one and nine AP courses in 2011–2012, compared to 13 campuses in 2010–2011. There was one fewer high school that offered between 10 and 15 AP courses in 2012 compared to 2011, and there was an increase in the number of campuses offering 16 to 20 AP courses, from 5 in 2010–2011 to 9 in 2011–2012.

## Participation by Student Group

The number of HISD students who took an AP exam, number of exams taken, and number of exams scored 3 or higher for grades 9–12 by race/ethnicity and economic status are presented in **Table 1**. The number of exam takers reflects an unduplicated count of students who took an exam, and the number of exams taken is a duplicated count of exams. In other words, a given student is counted once, and all the exams that student has taken are counted as well.



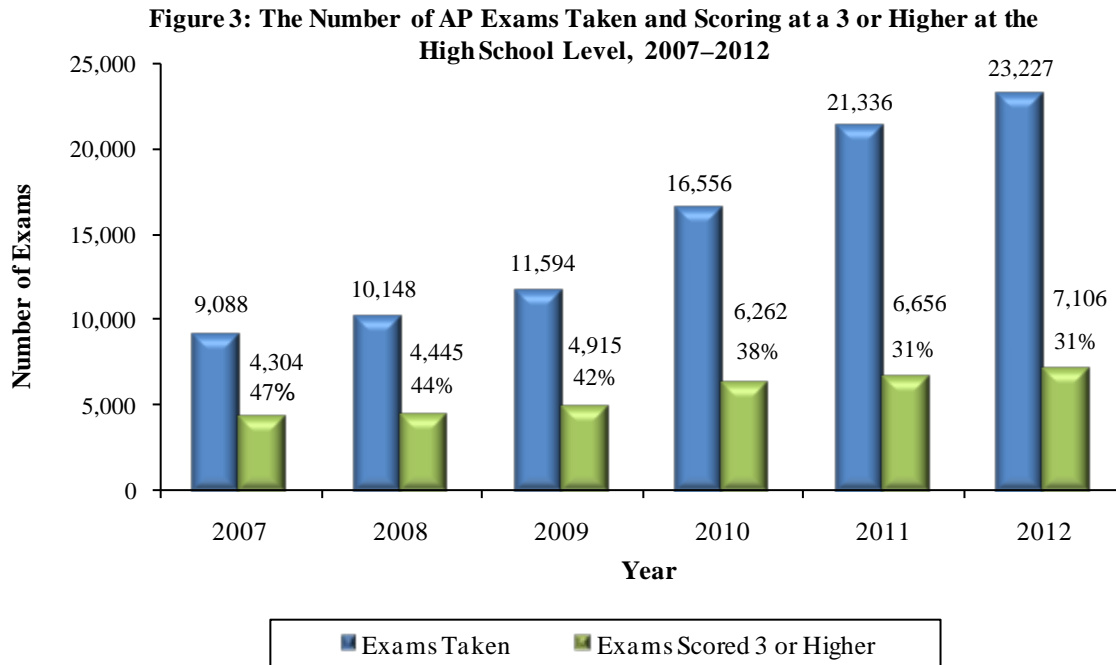
| <b>Table 1: 2012 AP Exam Participation for Grades 9-12* by Student Group</b> |                          |                          |                       |                       |
|--|--------------------------|--------------------------|-----------------------|-----------------------|
| <b>Student Group</b>   | <b>N<br/>Exam Takers</b> | <b>N<br/>Exams Taken</b> | <b>N<br/>Exams 3+</b> | <b>%<br/>Exams 3+</b> |
| African American   | 2,654                    | 4,317                    | 581                   | 13                    |
| American Indian  | 43                       | 67                       | 20                    | 30                    |
| Asian American   | 917                      | 2,323                    | 1,545                 | 67                    |
| Hispanic   | 7,299                    | 12,047                   | 2,750                 | 23                    |
| White  | 1,881                    | 3,515                    | 1,904                 | 54                    |
| No Response  | 262                      | 376                      | 101                   | 27                    |
| Other  | 347                      | 582                      | 205                   | 35                    |
| Female   | 7,432                    | 12,759                   | 3,746                 | 29                    |
| Male   | 5,971                    | 10,468                   | 3,360                 | 32                    |
| Econ Disadv.   | 8,656                    | 14,284                   | 2,902                 | 20                    |
| Non-Econ. Disadv.  | 4,708                    | 8,893                    | 4,188                 | 47                    |
| Unknown Econ. Status   | 39                       | 50                       | 16                    | 32                    |
| <b>Total</b>   | <b>13,403</b>            | <b>23,227</b>            | <b>7,106</b>          | <b>31</b>             |

\*Students with a grade level not indicated are included

- Hispanic students comprise the largest racial/ethnic group of students who took an AP exam in grades 9-12, accounting for over half of the exam takers and the number of exams taken. Twenty-three percent of exams taken by Hispanic students were scored at 3 or higher.
- African American students represent the second largest group of AP exam takers in grades 9-12. Out of 4,317 AP exams taken, 581 (13%) of those were scored at 3 or higher.
- White students are the next largest group who took an AP exam. Out of 3,515 AP exams taken, 1,904 (54%) of those scored at 3 or higher.
- There were 917 Asian American students in grades 9-12 who took 2,323 AP exams. Out of those exams, 1,545 (67%) were scored at 3 or higher.
- Almost two-thirds of HISD students in grades 9–12 who took an AP exam are economically disadvantaged. These students took a total of 14,284 AP exams, 2,902 (20%) of which were scored at 3 or higher.

### AP Exams Taken

The number of AP exams taken at district high schools and the number and percent scored at 3 or higher are shown in **Figure 3**.



- The number of AP exams taken by high-school students increased by 1,891 (9%), from 21,336 in 2011 to 23,227 in 2012.
- Over the past six years, the number of Advanced Placement (AP) exams taken by HISD high-school students has increased from 9,088 in 2007 to 23,227 in 2012.
- While the number of exams scored at a 3 or higher has increased from 4,304 in 2007 to 7,106 in 2012 at the high-school level, the percentage has decreased from 47 percent in 2007 to 31 percent in 2012.

### District Summary by Student Group

AP course completion by student groups including race/ethnicity, gender, economic status, and LEP status were examined for 2011 and 2012. The number and percent of HISD students in grades 10–12 completing AP courses are presented by student group in **Table 2**. This table reflects an unduplicated count of students for courses.

**Table 2: 2011 and 2012 District Summary of AP Course Enrollment and Completion by Demographic Group, Grades 10–12 (Unduplicated Count)**

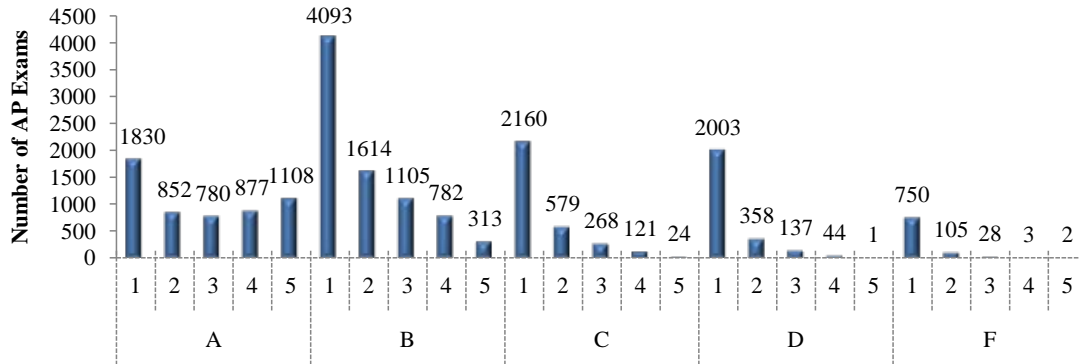
| <b>Student Group</b> | <b>Total Gr 10-12 Enroll.</b> | <b>2012</b>                 |                | <b>AP Course Completion</b> |                |
|----------------------|-------------------------------|-----------------------------|----------------|-----------------------------|----------------|
|                      |                               | <b>AP Course Enrollment</b> |                | <b>AP Course Completion</b> |                |
|                      |                               | <b>Total</b>                | <b>Percent</b> | <b>Total</b>                | <b>Percent</b> |
| African American     | 8,972                         | 2,638                       | 29.4           | 2,421                       | 91.8           |
| American Indian      | 97                            | 29                          | 29.9           | 27                          | 93.1           |
| Asian American       | 1,290                         | 792                         | 61.4           | 776                         | 98.0           |
| Hispanic             | 18,444                        | 6,282                       | 34.1           | 5,629                       | 89.6           |
| Pac. Is./HI          | 71                            | 29                          | 40.8           | 27                          | 93.1           |
| White                | 3,062                         | 1,646                       | 53.8           | 1,574                       | 95.6           |
| 2 or More            | 223                           | 127                         | 57.0           | 119                         | 93.7           |
| Other                | 25                            |                             |                |                             |                |
| Econ. Disadv.        | 23,063                        | 7,488                       | 32.5           | 6,728                       | 89.9           |
| Non-Eco. Disadv.     | 9,121                         | 4,055                       | 44.5           | 3,845                       | 94.8           |
| LEP                  | 2,111                         | 179                         | 8.5            | 155                         | 86.6           |
| Non-LEP              | 30,048                        | 11,364                      | 37.8           | 10,418                      | 91.7           |
| No LEP Info.         | 25                            |                             |                |                             |                |
| Female               | 16,119                        | 6,400                       | 39.7           | 5,960                       | 93.1           |
| Male                 | 16,065                        | 5,143                       | 32.0           | 4,613                       | 89.7           |
| <b>Total</b>         | <b>32,184</b>                 | <b>11,543</b>               | <b>35.9</b>    | <b>10,573</b>               | <b>91.6</b>    |

| <b>Student Group</b> | <b>Total Gr 10-12 Enroll.</b> | <b>2011</b>                 |                | <b>AP Course Completion</b> |                |
|----------------------|-------------------------------|-----------------------------|----------------|-----------------------------|----------------|
|                      |                               | <b>AP Course Enrollment</b> |                | <b>AP Course Completion</b> |                |
|                      |                               | <b>Total</b>                | <b>Percent</b> | <b>Total</b>                | <b>Percent</b> |
| African American     | 9,041                         | 2,596                       | 28.7           | 2,460                       | 94.8           |
| American Indian      | 94                            | 27                          | 28.7           | 26                          | 96.3           |
| Asian American       | 1,198                         | 767                         | 64.0           | 757                         | 98.7           |
| Hispanic             | 17,287                        | 5,250                       | 30.4           | 4,781                       | 91.1           |
| Pac. Is./HI          | 116                           | 46                          | 39.7           | 45                          | 97.8           |
| White                | 3,011                         | 1,596                       | 53.0           | 1,549                       | 97.1           |
| 2 or More            | 202                           | 107                         | 53.0           | 102                         | 95.3           |
| Other                | 154                           | 1                           | 0.6            | 0                           | 0.0            |
| Econ. Disadv.        | 22,058                        | 6,450                       | 29.2           | 5,945                       | 92.2           |
| Non-Eco. Disadv.     | 9,045                         | 3,940                       | 43.6           | 3,775                       | 95.8           |
| LEP                  | 1,766                         | 49                          | 2.8            | 45                          | 91.8           |
| Non-LEP              | 29,337                        | 10,341                      | 35.2           | 9,675                       | 93.6           |
| Female               | 15,827                        | 5,787                       | 36.6           | 5,476                       | 94.6           |
| Male                 | 15,276                        | 4,603                       | 30.1           | 4,244                       | 92.2           |
| <b>Total</b>         | <b>31,103</b>                 | <b>10,390</b>               | <b>33.4</b>    | <b>9,720</b>                | <b>93.6</b>    |

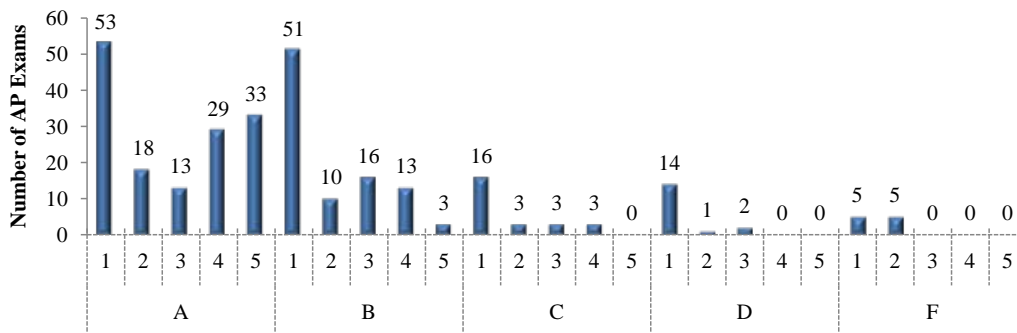
- For the district as a whole in 2012, 11,543 out of 32,184, or 36% of students in grades 10-12 were enrolled in at least one AP course. Of students enrolled in an AP course, 10,573 completed at least one AP course (92%).
- In 2012, Hispanic and African American students represented the largest student groups in grades 10 through 12; however, far fewer than half Hispanic and African American students were enrolled in an AP course. By contrast, more than half of White and Asian American students in grades 10-12 were enrolled in at least one AP course.
- Each ethnic student group in 2012 showed high completion rates for completing at least one AP course, ranging from 90% for Hispanics to 98% for Asian American students.

**Figures 4-10** show districtwide AP exam scores by AP course grade for all courses/exams, grouped into subjects. These figures show all AP exams that were taken only by students who received a grade in the AP course. **Appendix A** provides the list of AP courses that comprise the subjects in the figures.

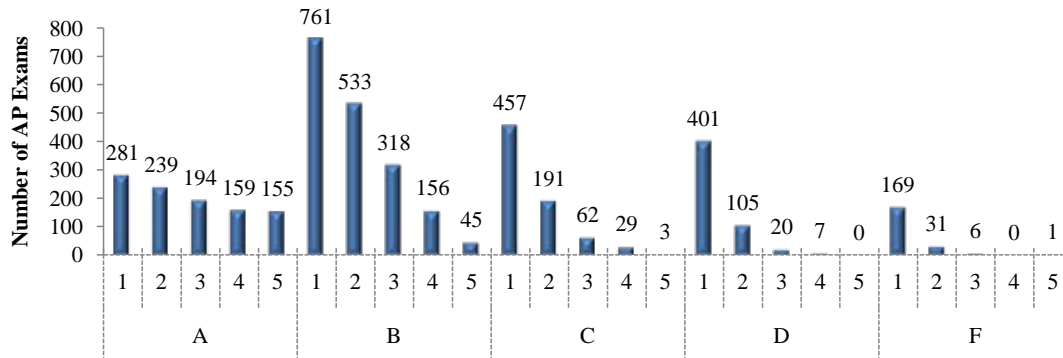
**Figure 4: HISD Frequency Distribution for All AP Subjects, AP Exam Score by AP Final Course Grade, 2011-2012**



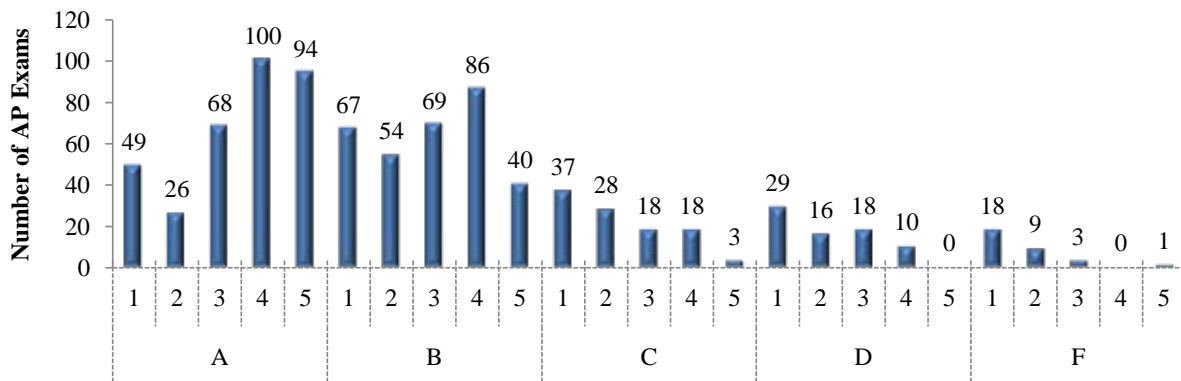
**Figure 5: HISD Frequency Distribution for Art and Music Exams, AP Exam Score by AP Final Course Grade, 2011-2012**



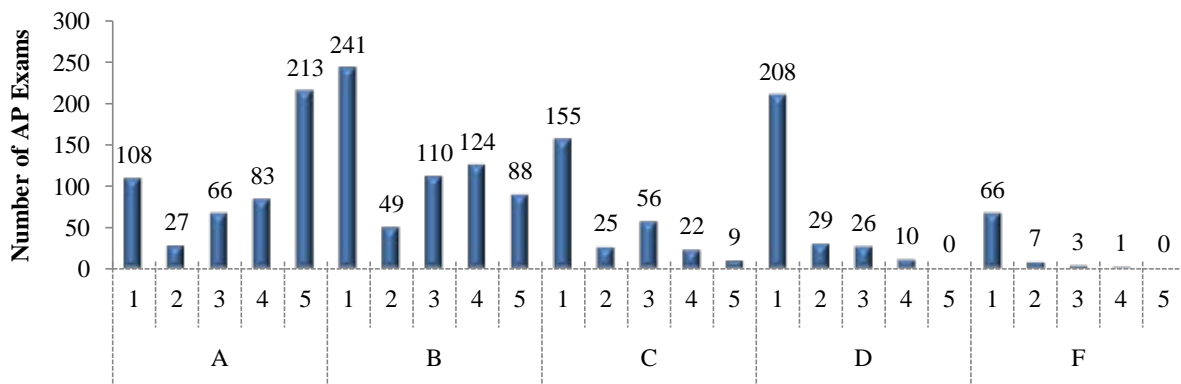
**Figure 6: HISD Frequency Distribution for English Exams, AP Exam Score by AP Final Course Grade, 2011-2012**



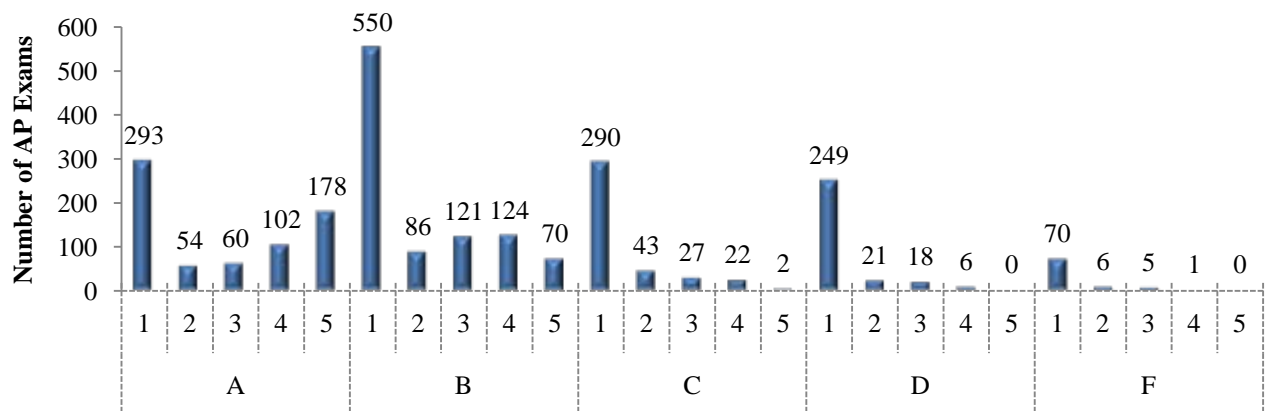
**Figure 7: HISD Frequency Distribution for Foreign Language Exams, AP Exam Score by AP Final Course Grade, 2011-2012**



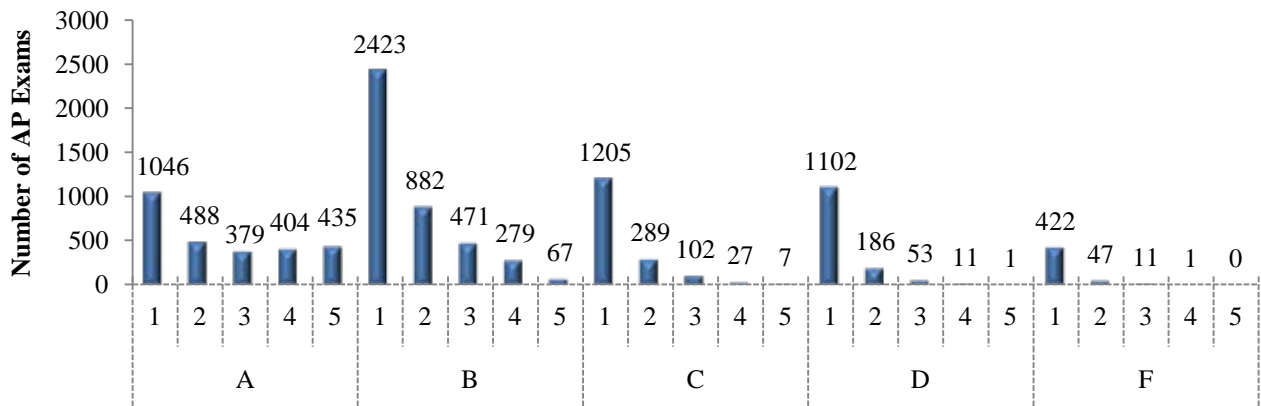
**Figure 8: HISD Frequency Distribution for Math Exams, AP Exam Score by AP Final Course Grade, 2011-2012**



**Figure 9: HISD Frequency Distribution for Science Exams, AP Exam Score by AP Final Course Grade, 2011-2012**



**Figure 10: HISD Frequency Distribution for Social Studies Exams, AP Exam Score by AP Final Course Grade, 2011-2012**

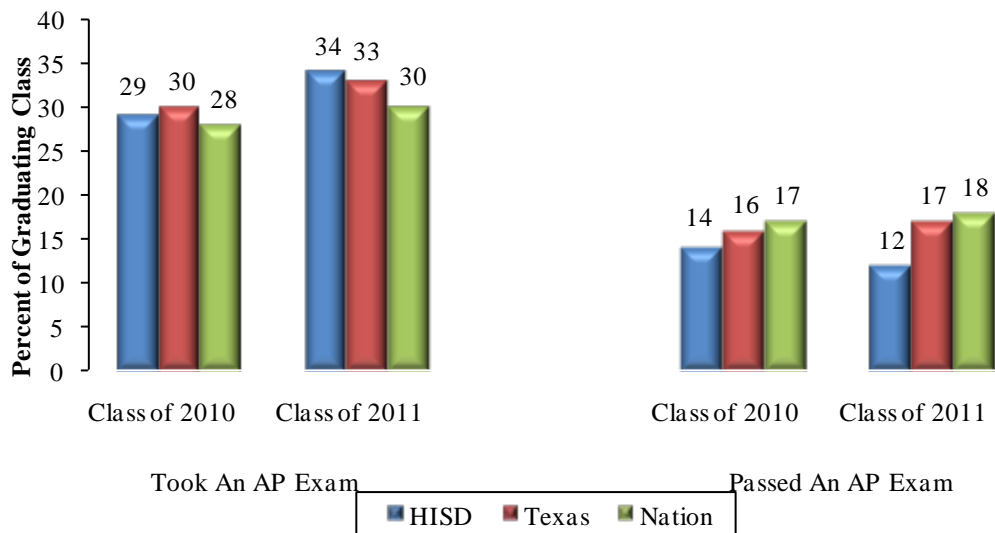


- With the exception of foreign language and math AP exams, each AP final course letter grade had the highest number of AP exams scored at a 1.
- Eighty-nine percent of AP exams that were scored at a 3 or higher were linked to students who received an A or B in the AP course. Of the 13,354 AP course grades of either A or B, 37 percent were linked to students who scored at or above a 3 on the AP exam.

### Comparison with State and Nation

Participation and performance for the district, state, and nation are presented in **Figure 11**. The College Board provides data for graduating classes for the state and nation in its annual *AP Report to the Nation*, which is released in January of each year.

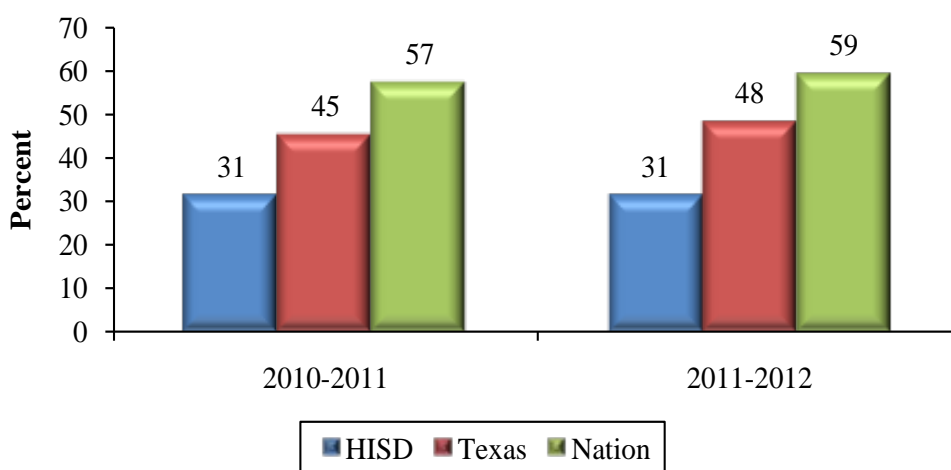
**Figure 11: Percent of Graduates Who Took and Passed an AP Exam, Classes of 2010 and 2011**



Note: Source for 2010 and 2011 state and national data: AP Report to the Nation, 7<sup>th</sup> and 8<sup>th</sup> editions, the College Board. Source for 2010 HISD data, College Board hard copy data report; 2011 HISD data derived from August 23, 2011 AP electronic file and 2010-2011 PEIMS Graduates file (2011 Fall submission).

- For the classes of 2010 and 2011, HISD trailed Texas and the nation in the percentage of graduates who passed an AP exam with a score of 3 or higher. However, in 2011, HISD outperformed the state and the nation in the percentage of graduates who took an AP exam at some point in their high school career.
- The percentage of HISD graduates who took an AP exam increased by five percentage points (29% - 34%) from 2010 to 2011, exceeding both the state and national increases. The percentage of graduates who passed an AP exam decreased 2 percentage points (from 14% to 12%) over the same time period, whereas the state and nation both increased by 1 percentage point.

**Figure 12: Percent of AP Exams Scored 3 or Higher,  
2011 and 2012**

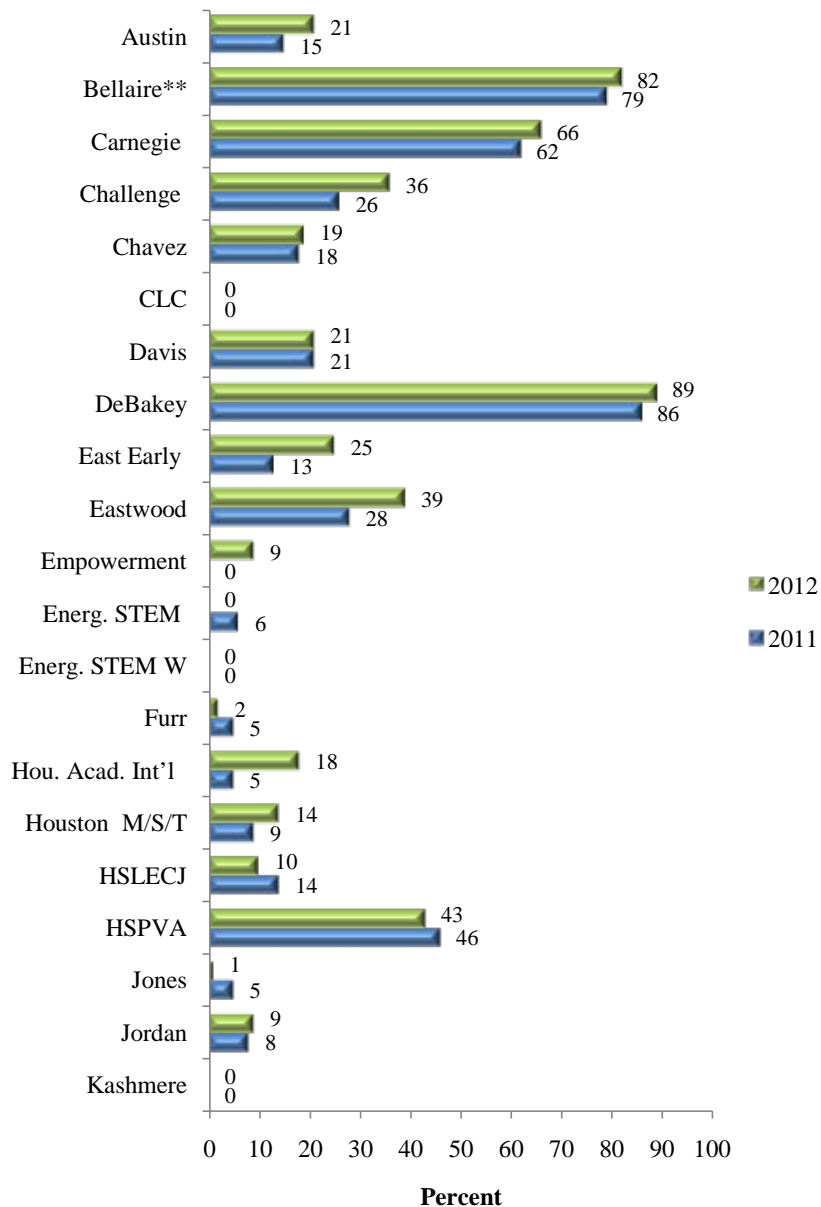


- The percent of HISD AP exams scored at 3 or higher remained the same from 2011 to 2012 while the percentages of AP exams scored at 3 or higher for the state and the nation both increased over the same time period (see Figure 12).

### Student AP Course and Exam Participation and Performance by Campus

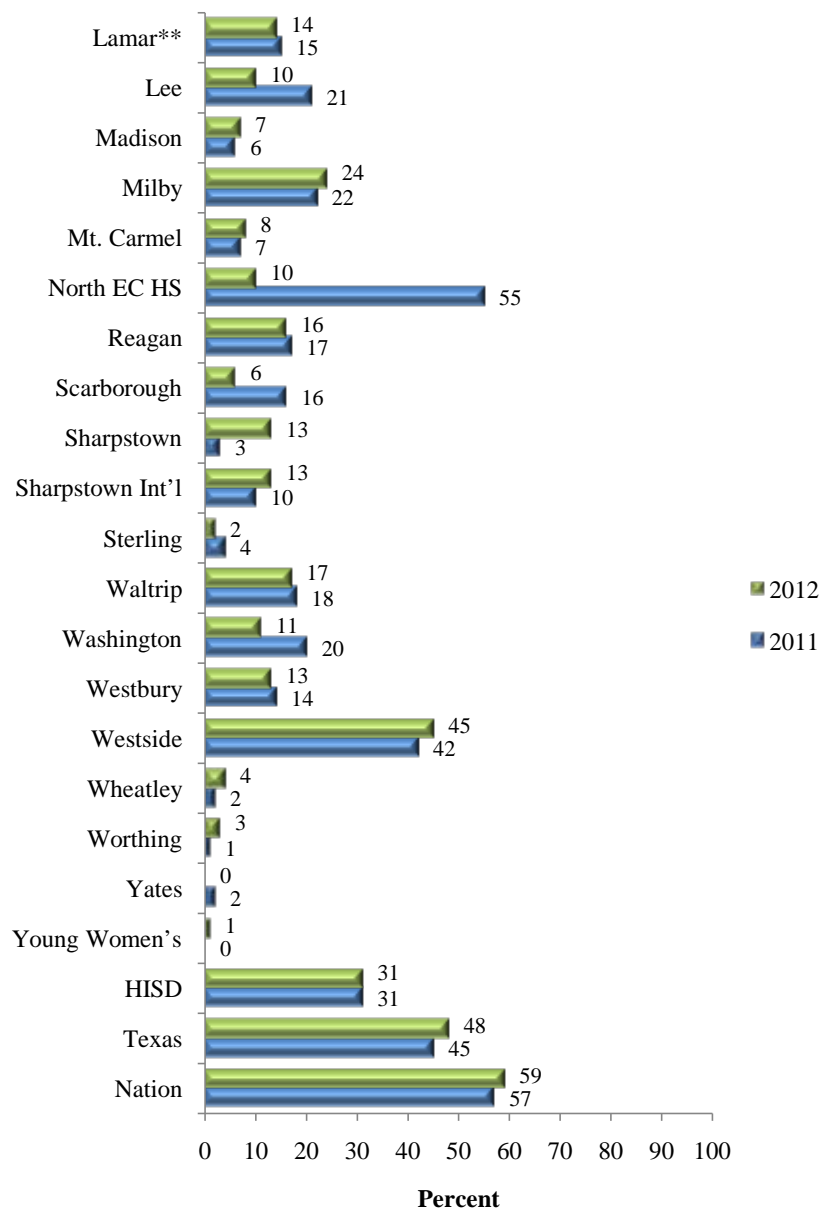
**Figure 13** shows the percent of exams scored at 3 or higher in grades 9-12 for each campus in 2011 and 2012. All AP exams are represented in this figure, regardless of whether the student was enrolled in the AP course. **Appendix B** also presents the number of students taking AP exams in grades 9-12, the number of exams taken for each of these high schools, and the number and percent scoring a 3 or higher for 2011 and 2012.

**Figure 13: Percent of Exams Scored at 3 or Higher, Grades 9-12, 2011 and 2012**





**Figure 13 con't: Percent of Exams Scored at 3 or Higher, Grades 9-12, 2011 and 2012**

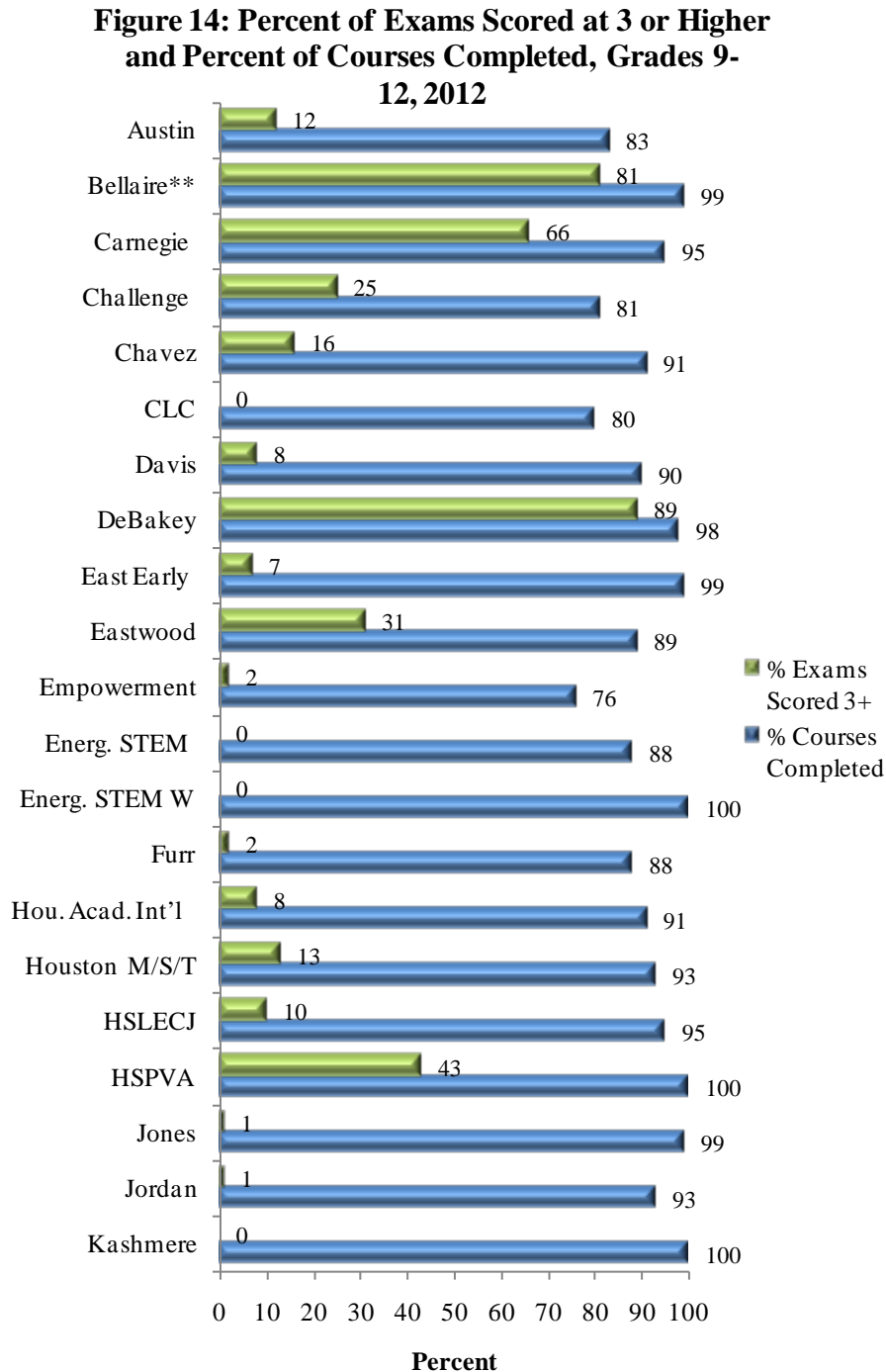


\*\*Bellaire and Lamar high schools offer the International Baccalaureate Program.

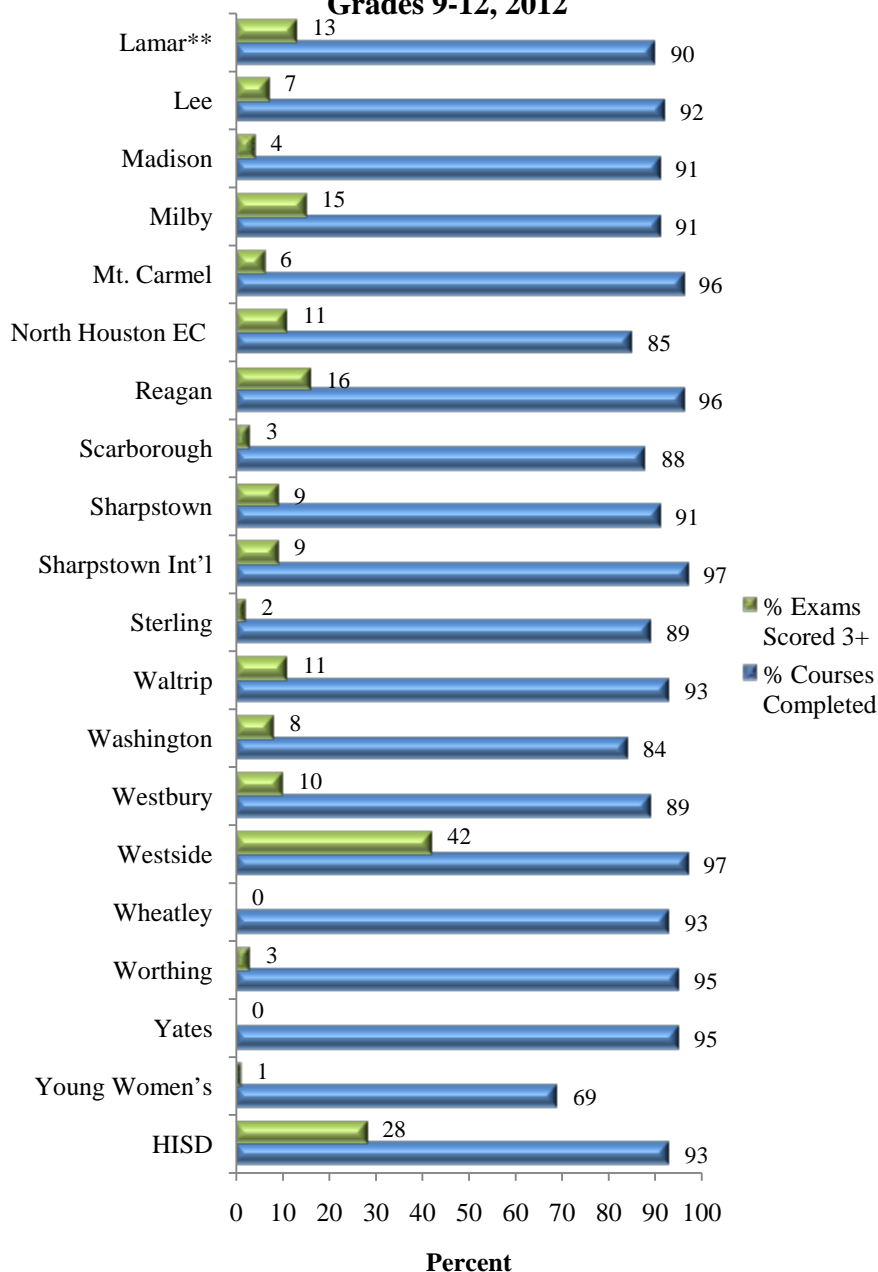
- Of the 40 HISD campuses that tested students on AP exams in both 2011 and 2012, 21 or 53% increased the percent of exams that scored a 3 or higher.

**Figure 14** shows the percent of courses completed by HISD students in grades 9-12 who were enrolled in AP courses. The percent of AP exams scored at a 3 or higher in Figure 14 represents the number of exams out of the number of students who were both enrolled in the AP course and took the AP exam. All AP exams in this figure are linked to students who took the corresponding AP course.

**Appendix C** shows the number of courses taken and completed by HISD students in grades 9-12 as well as the number of exams these students enrolled in the AP courses took and the number and percent of these exams that scored 3 or higher. In this table, only students who took an AP course and took the AP exam are shown.



**Figure 14 con't: Percent of Exams Scored at 3 or Higher and Percent of Courses Completed, Grades 9-12, 2012**

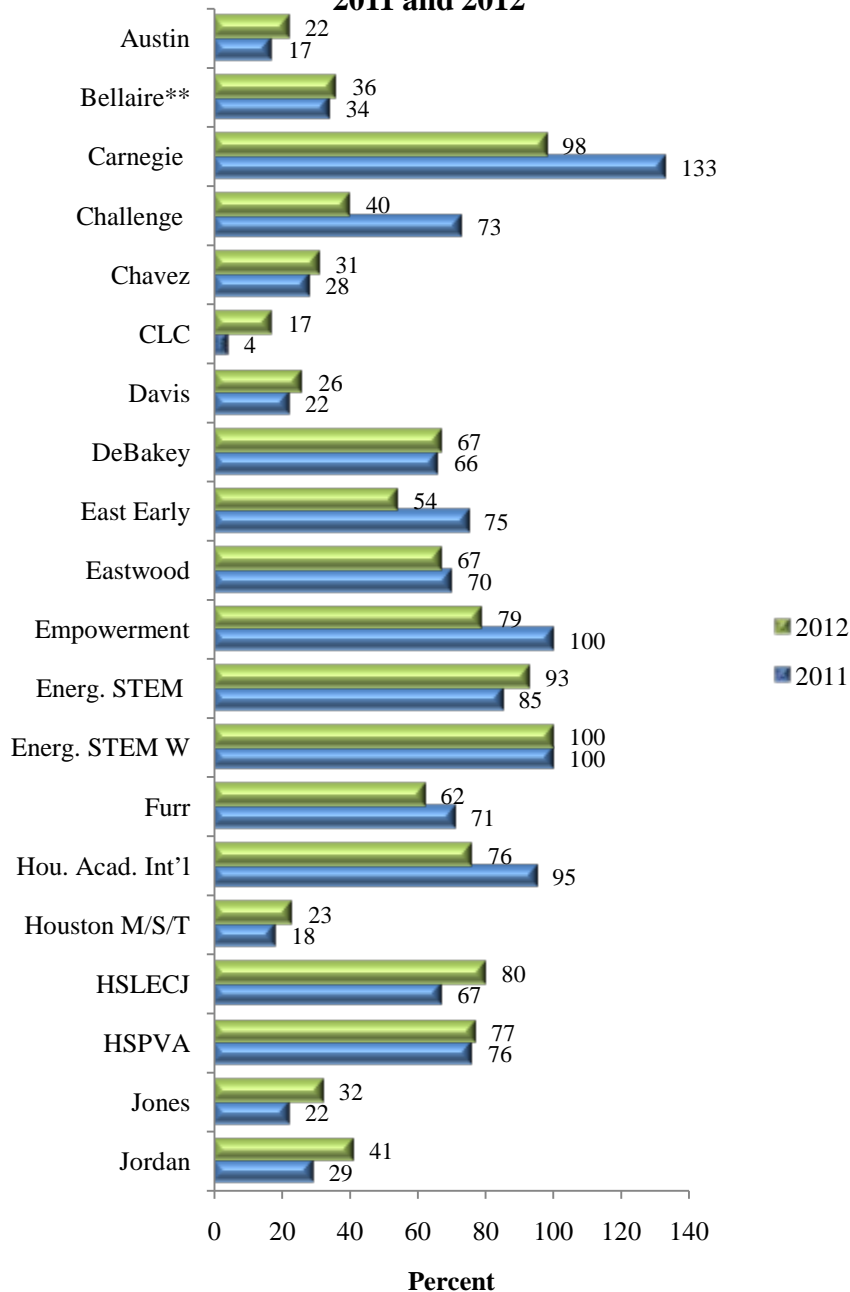


\*\*Bellaire and Lamar high schools offer the International Baccalaureate Program.

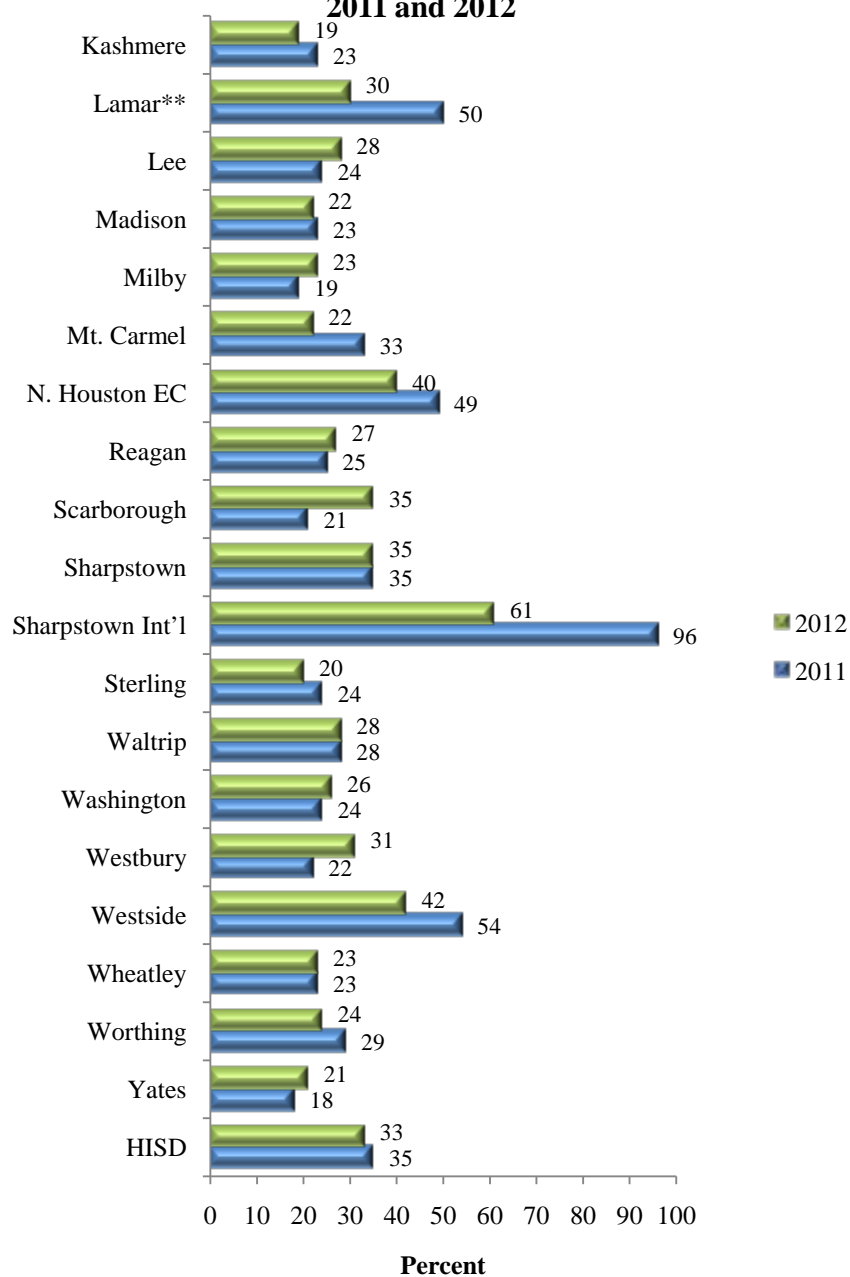
- HISD students in grades 9-12 completed 18,565 out of 19,968 courses taken (93%) where they also took the AP exam. Of the 19,968 courses taken, 5,593 (28%) of the AP exams were scored at a 3 or higher.
- Out of the 40 schools that offered AP courses in the 2012 school year, 27 (68%) had at least 90% of the courses successfully completed by students.

**Figure 15** and **Appendix D** present the percent of students who completed at least one AP course. Appendix D also shows the grade 10–12 enrollment on each campus and the number and percent of students in grades 10–12 completing at least one AP course for 2011 and 2012. Very few AP courses are available for students in grade 9, but ninth grade is usually the largest grade level at comprehensive high schools. Thus, basing percentages of AP courses and exams taken on enrollment that includes 9<sup>th</sup> graders does not truly reflect the rates of participation. Data for Figure 15 and Appendix D are unduplicated; though a student may take more than one AP course, he is only counted once. Percentages are based on AP courses taken by students in grades 10–12.

**Figure 15: Percent of Students Enrolled who Completed at Least 1 AP Course, Grades 10-12, 2011 and 2012**



**Figure 15 con't: Percent of Students Enrolled who Completed at Least 1 AP Course, Grades 10-12, 2011 and 2012**



\*\*Bellaire and Lamar high schools offer the International Baccalaureate Program.

- For HISD, 33 percent of students in grades 10-12 completed at least one AP course in 2011-2012, down from 35 percent in 2010-2011.
- For the 2012 school year, 19 out of 39 (49%) HISD campuses increased their percent of students who completed at least one AP course from the previous year.

### **Campus Participation and Performance by Exam**

Analysis of districtwide participation focused on the number of students taking any of the possible 37 AP exams offered by the College Board. Results from 2011–2012 are presented in **Appendix E**. Additionally, the number of students taking each exam and the percent scoring a 3 or higher are presented for each exam.

### **AP Exam Participation and Performance by Campus**

Advanced Placement Course enrollment and exam data are presented by campus in **Appendix F**. Data analyzed are duplicated by exam and included the grade 10–12 enrollment on each campus, the number of AP courses offered, and the number and percent of AP courses completed (passed), and the number and percent of AP exams taken and scored at 3 or higher.

### **AP Scholar Awards**

The AP Program offers several AP Scholar Awards to recognize high school students who have demonstrated college-level achievement through AP courses and exams. This achievement is acknowledged on any score report that is sent to colleges the following fall. Notifications about AP Scholar Awards are sent to students and schools in October of each year. The following awards are provided to the students groups described for each award according to the College Board:

- AP Scholar: Granted to students who receive scores of 3 or higher on three or more AP exams;
- AP Scholar with Honor: Granted to students who receive an average score of at least 3.25 on all AP Exams taken, **and** scores of 3 or higher on four or more of these exams;
- AP Scholar with Distinction: Granted to students who receive an average score of at least 3.5 on all AP Exams taken, **and** scores of 3 or higher on five or more of these exams; and
- National AP Scholar: Granted to students in the United States who receive an average score of at least 4 on all AP Exams taken, **and** scores of 4 or higher on eight or more of these exams.

AP Scholar Awards earned by HISD students for 2011 and 2012 are presented by campus and districtwide in **Appendix G**. The number of AP Scholar Awards presented to HISD students increased 15% from 1,070 in 2011 to 1,227 in 2012.

### **“Emerging Scholars” 8<sup>th</sup> and 9<sup>th</sup> Grade Participation and Performance**

Though Advanced Placement courses and exams are usually taken by high school upperclassmen, increasingly, students in middle school and ninth grade are beginning to take advantage of the opportunity to earn college credits early in their academic careers. The most common courses and exams taken by middle school students and high school underclassmen tend to be Human Geography, typically a ninth-grade course, and foreign language courses and exams, especially for students for whom English is a second language. Increasingly, eighth and ninth graders in HISD are participating in Advanced Placement programs. **Table 3** presents AP course and exam participation and performance for students in grades 8–9. Counts presented in Table 3 are duplicated.

**Table 3: 2012 8<sup>th</sup> and 9<sup>th</sup> Grade AP Participation and Performance – Duplicated Count**

| <b>2012</b>  |                         |                         |                         |                     |                              |                             |                             |
|--------------|-------------------------|-------------------------|-------------------------|---------------------|------------------------------|-----------------------------|-----------------------------|
| Grade        | N Enrolled<br>AP Course | N Complete<br>AP Course | % Complete<br>AP Course | N Taking<br>AP Exam | % Comp.<br>Taking AP<br>Exam | N Score<br>3+ on AP<br>Exam | % Score<br>3+ on AP<br>Exam |
| 8            | 273                     | 263                     | 96                      | 317                 | 121                          | 211                         | 67                          |
| 9            | 1,720                   | 1,391                   | 81                      | 1,969               | 142                          | 501                         | 25                          |
| <b>Total</b> | <b>1,993</b>            | <b>1,654</b>            | <b>83</b>               | <b>2,286</b>        | <b>138</b>                   | <b>712</b>                  | <b>31</b>                   |

| <b>2011</b>  |                         |                         |                         |                     |                              |                             |                             |
|--------------|-------------------------|-------------------------|-------------------------|---------------------|------------------------------|-----------------------------|-----------------------------|
| Grade        | N Enrolled<br>AP Course | N Complete<br>AP Course | % Complete<br>AP Course | N Taking<br>AP Exam | % Comp.<br>Taking AP<br>Exam | N Score<br>3+ on AP<br>Exam | % Score<br>3+ on AP<br>Exam |
| 8            | 299                     | 293                     | 98                      | 299                 | 102                          | 196                         | 66                          |
| 9            | 1,428                   | 1,248                   | 87                      | 1,868               | 150                          | 458                         | 25                          |
| <b>Total</b> | <b>1,727</b>            | <b>1,541</b>            | <b>89</b>               | <b>2,165</b>        | <b>140</b>                   | <b>654</b>                  | <b>30</b>                   |

Course and exam data are not linked.

- In 2012, 1,993 district eighth and ninth graders enrolled in an AP course, compared to 1,727 district eighth and ninth graders enrolled in an AP course in 2011. In 2012, 1,654 (83%) of those students completed the course, compared to 1,541 (89%) in 2011.
- A combined total of 2,286 HISD eighth and ninth graders took AP exams in 2012, compared to 2,165 in 2011. In 2012, 31 percent of those exams were scored at a 3 or higher, up one percentage point from 2011.

### Conclusion

The purpose of this report was to provide an examination of the participation and performance of HISD students on Advanced Placement exams and courses. The investigation was also designed to supply a comparison of current year AP results with the results from the previous year. The results from this report indicated that student participation on AP exams in the district increased from the previous year. In addition, enrollment in AP courses also increased in 2011–2012 from the previous school year. Though the percentage of students scoring a 3 or higher decreased slightly over the same time period and has decreased steadily over the past ten years, it is important to note that many more students are performing at this high level today. Notably, in 2001, 57 percent of just 3,769 or 2,148 AP exams taken by HISD students were scored at 3 or higher, and in 2012, 31 percent of 23,227 or 7,200 exams scored at this level, reflecting 5,052 more exams. Many more HISD students are being exposed to Advanced Placement courses and to the opportunity to earn college credit.

## **Appendix A: HISD AP Exam Subjects**

### **Science**

Biology  
Chemistry  
Environmental Science  
Physics B  
Physics C: Mechanics  
Psychology

### **Math**

Calculus AB  
Calculus BC  
Computer Science  
Statistics

### **Foreign Language**

Chinese Language and Culture  
French Language  
German Language  
Latin: Vergil  
Spanish Language  
Spanish Literature

### **Social Studies**

Comparative Government and Politics  
European History  
Human Geography  
Macroeconomics  
Microeconomics  
United States Government and Politics  
United States History  
World History

### **Art/Music**

Art History  
Music Theory  
Studio Art: 2-D Design Portfolio  
Studio Art: 3-D Design Portfolio  
Studio Art: Drawing Portfolio

### **English**

English Language and Composition  
English Literature and Composition



**Appendix B: HISD 2011 and 2012 AP Participation and Number and Percent of Exams Scored at 3 or Higher, Grades 9-12**

| School           | 2011                |                    |                        |             | 2012                |                    |                        |             |
|------------------|---------------------|--------------------|------------------------|-------------|---------------------|--------------------|------------------------|-------------|
|                  | Number Taking Exams | Number Exams Taken | Number Exams Scored 3+ | % Scored 3+ | Number Taking Exams | Number Exams Taken | Number Exams Scored 3+ | % Scored 3+ |
| Austin           | 335                 | 452                | 69                     | 15          | 394                 | 516                | 107                    | 21          |
| Bellaire**       | 886                 | 2,576              | 2,031                  | 79          | 949                 | 2,599              | 2,135                  | 82          |
| Carnegie         | 442                 | 940                | 579                    | 62          | 487                 | 988                | 651                    | 66          |
| Challenge        | 285                 | 378                | 97                     | 26          | 280                 | 368                | 133                    | 36          |
| Chavez           | 722                 | 1,013              | 187                    | 18          | 732                 | 1,073              | 199                    | 19          |
| CLC              | 9                   | 13                 | 0                      | 0           | 6                   | 6                  | 0                      | 0           |
| Davis            | 326                 | 552                | 115                    | 21          | 339                 | 552                | 117                    | 21          |
| DeBakey          | 414                 | 971                | 834                    | 86          | 401                 | 992                | 879                    | 89          |
| East Early       | 269                 | 383                | 51                     | 13          | 250                 | 309                | 76                     | 25          |
| Eastwood         | 246                 | 533                | 151                    | 28          | 291                 | 584                | 229                    | 39          |
| Empowerment      | 9                   | 11                 | 0                      | 0           | 93                  | 105                | 9                      | 9           |
| Energ. STEM      | 120                 | 306                | 18                     | 6           | 111                 | 355                | 1                      | 0           |
| Energ. STEM W    |                     |                    |                        |             | 44                  | 66                 | 0                      | 0           |
| Furr             | 390                 | 680                | 32                     | 5           | 352                 | 653                | 16                     | 2           |
| Hope Academy     | 1                   | 1                  | *                      | *           |                     |                    |                        |             |
| Hou. Acad. Int'l | 274                 | 375                | 17                     | 5           | 235                 | 338                | 60                     | 18          |
| Houston M/S/T    | 295                 | 480                | 42                     | 9           | 421                 | 794                | 113                    | 14          |
| HSLECJ           | 275                 | 454                | 62                     | 14          | 325                 | 645                | 66                     | 10          |
| HSPVA            | 342                 | 630                | 288                    | 46          | 357                 | 707                | 306                    | 43          |
| Jones            | 84                  | 143                | 7                      | 5           | 96                  | 170                | 1                      | 1           |
| Jordan           | 243                 | 353                | 29                     | 8           | 281                 | 402                | 36                     | 9           |
| Kashmere         | 89                  | 140                | 0                      | 0           | 60                  | 113                | 0                      | 0           |
| Lamar**          | 1,113               | 1,148              | 176                    | 15          | 1,631               | 1,714              | 246                    | 14          |
| Lee              | 277                 | 574                | 119                    | 21          | 302                 | 575                | 56                     | 10          |
| Madison          | 370                 | 529                | 30                     | 6           | 386                 | 524                | 39                     | 7           |
| Milby            | 456                 | 779                | 172                    | 22          | 462                 | 841                | 204                    | 24          |
| Mt. Carmel       | 71                  | 110                | 8                      | 7           | 60                  | 93                 | 7                      | 8           |
| New Aspir.       | 1                   | 1                  | *                      | *           |                     |                    |                        |             |
| North EC HS      | 179                 | 224                | 123                    | 55          | 142                 | 223                | 22                     | 10          |
| Reagan           | 320                 | 557                | 95                     | 17          | 393                 | 723                | 113                    | 16          |
| Scarborough      | 98                  | 208                | 33                     | 16          | 150                 | 314                | 18                     | 6           |
| Sharpstown       | 286                 | 451                | 13                     | 3           | 422                 | 695                | 87                     | 13          |
| Sharpstown Int'l | 229                 | 366                | 38                     | 10          | 216                 | 354                | 46                     | 13          |
| South EC         | 61                  | 62                 | 1                      | 2           |                     |                    |                        |             |
| Sterling         | 164                 | 254                | 9                      | 4           | 122                 | 206                | 4                      | 2           |
| Waltrip          | 292                 | 541                | 97                     | 18          | 309                 | 567                | 98                     | 17          |
| Washington       | 144                 | 255                | 50                     | 20          | 165                 | 252                | 27                     | 11          |
| Westbury         | 501                 | 861                | 121                    | 14          | 633                 | 1,130              | 143                    | 13          |
| Westside         | 1,197               | 2,258              | 949                    | 42          | 997                 | 1,859              | 840                    | 45          |
| Wheatley         | 140                 | 200                | 3                      | 2           | 198                 | 346                | 14                     | 4           |
| Worthing         | 197                 | 342                | 5                      | 1           | 127                 | 228                | 7                      | 3           |
| Yates            | 146                 | 243                | 6                      | 2           | 110                 | 166                | 0                      | 0           |
| Young Women's    |                     |                    |                        |             | 74                  | 82                 | 1                      | 1           |
| <b>HISD</b>      | <b>12,298</b>       | <b>21,347</b>      | <b>6,657</b>           | <b>31</b>   | <b>13,403</b>       | <b>23,227</b>      | <b>7,106</b>           | <b>31</b>   |
| <b>Texas</b>     | <b>NA</b>           | <b>360,735</b>     | <b>163,705</b>         | <b>45</b>   | <b>208,181</b>      | <b>375,550</b>     | <b>179,622</b>         | <b>48</b>   |
| <b>Nation</b>    | <b>NA</b>           | <b>3,365,617</b>   | <b>1,936,054</b>       | <b>57</b>   | <b>2,053,941</b>    | <b>3,609,939</b>   | <b>2,123,139</b>       | <b>59</b>   |

\*Fewer than 5 students. \*\*Bellaire and Lamar high schools offer the International Baccalaureate Program.

Source: 2011 College Board electronic file, August 23, 2011; 2012 College Board electronic, file July 30, 2012

**Appendix C: HISD 2012 AP Course and Exam Performance by Students who Both Enrolled in an AP Course and Took the AP Exam, by School: Grades 9-12**

| <b>School</b>     | <b>Number Courses Enrolled</b> | <b>Number Courses Completed</b> | <b>% Courses Completed</b> | <b>Number Exams Taken</b> | <b>Number Exams Scored 3+</b> | <b>% Exams Scored 3+</b> |
|-------------------|--------------------------------|---------------------------------|----------------------------|---------------------------|-------------------------------|--------------------------|
| Austin            | 367                            | 306                             | 83                         | 367                       | 43                            | 12                       |
| Bellaire**        | 2,142                          | 2,117                           | 99                         | 2,142                     | 1,743                         | 81                       |
| Carnegie          | 967                            | 917                             | 95                         | 967                       | 636                           | 66                       |
| Challenge         | 274                            | 222                             | 81                         | 274                       | 69                            | 25                       |
| Chavez            | 873                            | 795                             | 91                         | 873                       | 136                           | 16                       |
| CLC               | 5                              | 4                               | 80                         | 5                         | 0                             | 0                        |
| Davis             | 429                            | 386                             | 90                         | 429                       | 33                            | 8                        |
| DeBakey           | 983                            | 962                             | 98                         | 983                       | 871                           | 89                       |
| East Early        | 197                            | 194                             | 99                         | 197                       | 13                            | 7                        |
| Eastwood          | 469                            | 419                             | 89                         | 469                       | 146                           | 31                       |
| Empowerment       | 96                             | 73                              | 76                         | 96                        | 2                             | 2                        |
| Energ. STEM       | 251                            | 222                             | 88                         | 251                       | 1                             | 0                        |
| Energ. STEM W     | 51                             | 51                              | 100                        | 51                        | 0                             | 0                        |
| Furr              | 606                            | 531                             | 88                         | 606                       | 14                            | 2                        |
| Hou. Acad. Int'l  | 278                            | 253                             | 91                         | 278                       | 22                            | 8                        |
| Houston M/S/T     | 745                            | 694                             | 93                         | 745                       | 100                           | 13                       |
| HSLECJ            | 631                            | 596                             | 95                         | 631                       | 64                            | 10                       |
| HSPVA             | 700                            | 697                             | 100                        | 700                       | 303                           | 43                       |
| Jones             | 163                            | 162                             | 99                         | 163                       | 1                             | 1                        |
| Jordan            | 348                            | 322                             | 93                         | 348                       | 5                             | 1                        |
| Kashmere          | 105                            | 105                             | 100                        | 105                       | 0                             | 0                        |
| Lamar**           | 1,364                          | 1,221                           | 90                         | 1,364                     | 175                           | 13                       |
| Lee               | 515                            | 471                             | 92                         | 515                       | 34                            | 7                        |
| Madison           | 428                            | 390                             | 91                         | 428                       | 18                            | 4                        |
| Milby             | 664                            | 606                             | 91                         | 664                       | 97                            | 15                       |
| Mt. Carmel        | 83                             | 80                              | 96                         | 83                        | 5                             | 6                        |
| North Houston EC  | 150                            | 127                             | 85                         | 150                       | 16                            | 11                       |
| Reagan            | 660                            | 631                             | 96                         | 660                       | 107                           | 16                       |
| Scarborough       | 292                            | 258                             | 88                         | 292                       | 8                             | 3                        |
| Sharpstown        | 564                            | 514                             | 91                         | 564                       | 49                            | 9                        |
| Sharpstown Int'l* | 318                            | 307                             | 97                         | 303                       | 26                            | 9                        |
| Sterling          | 189                            | 169                             | 89                         | 189                       | 3                             | 2                        |
| Waltrip           | 510                            | 473                             | 93                         | 510                       | 54                            | 11                       |
| Washington        | 234                            | 197                             | 84                         | 234                       | 19                            | 8                        |
| Westbury          | 973                            | 867                             | 89                         | 973                       | 99                            | 10                       |
| Westside          | 1,619                          | 1,562                           | 97                         | 1,619                     | 674                           | 42                       |
| Wheatley          | 292                            | 272                             | 93                         | 292                       | 0                             | 0                        |
| Worthing          | 206                            | 196                             | 95                         | 206                       | 6                             | 3                        |
| Yates             | 154                            | 146                             | 95                         | 154                       | 0                             | 0                        |
| Young Women's     | 73                             | 50                              | 69                         | 73                        | 1                             | 1                        |
| <b>HISD</b>       | <b>19,968</b>                  | <b>18,565</b>                   | <b>93</b>                  | <b>19,953</b>             | <b>5,593</b>                  | <b>28</b>                |

Note: AP courses and exams are linked in this table; all students who took an AP course also took the AP exam.

\*Fifteen students at Sharpstown International HS took two independent AP courses and took the corresponding AP exam, giving Sharpstown International 15 more courses enrolled than exams taken.

\*\*Bellaire and Lamar high schools offer the International Baccalaureate Program.

**Appendix D: AP Course Participation by Campus, Grades 10-12: 2011 and 2012 School Years (Unduplicated Count)**

| School           | 2011                   |   |  | 2012                   |   |  |
|------------------|------------------------|---|--|------------------------|---|--|
|                  | Total Enroll.<br>10-12 | Number<br>Comp. at least<br>1 AP Course | % of Enroll<br>Comp. at least<br>1 AP Course | Total Enroll.<br>10-12 | Number<br>Comp. at least<br>1 AP Course | % of Enroll<br>Comp. at least<br>1 AP Course |
| Austin           | 1,258                  | 217                                     | 17   | 1,205                  | 267                                     | 22   |
| Bellaire**       | 2,439                  | 838                                     | 34   | 2,478                  | 894                                     | 36   |
| Carnegie         | 297                    | 395                                     | 133  | 319                    | 312                                     | 98   |
| Challenge        | 317                    | 231                                     | 73   | 324                    | 130                                     | 40   |
| Chavez           | 1,745                  | 486                                     | 28   | 1,745                  | 542                                     | 31   |
| CLC              | 183                    | 8                                       | 4  | 24                     | 4                                       | 17   |
| Davis            | 1,107                  | 245                                     | 22   | 1,024                  | 264                                     | 26   |
| DeBakey          | 626                    | 412                                     | 66   | 600                    | 403                                     | 67   |
| East Early       | 313                    | 236                                     | 75   | 316                    | 172                                     | 54   |
| Eastwood         | 255                    | 179                                     | 70   | 288                    | 192                                     | 67   |
| Empowerment      | 9                      | 9                                       | 100  | 58                     | 46                                      | 79   |
| Energ. STEM      | 89                     | 76                                      | 85   | 99                     | 92                                      | 93   |
| Energ. STEM W    | 38                     | 38                                      | 100  | 83                     | 83                                      | 100  |
| Furr             | 504                    | 356                                     | 71   | 516                    | 322                                     | 62   |
| Hou. Acad. Int'l | 261                    | 249                                     | 95   | 281                    | 213                                     | 76   |
| Houston M/S/T    | 1,737                  | 305                                     | 18   | 1,717                  | 386                                     | 23   |
| HSLECJ           | 396                    | 266                                     | 67   | 388                    | 311                                     | 80   |
| HSPVA            | 465                    | 352                                     | 76   | 480                    | 369                                     | 77   |
| Jones            | 373                    | 82                                      | 22   | 312                    | 100                                     | 32   |
| Jordan           | 788                    | 225                                     | 29   | 712                    | 294                                     | 41   |
| Kashmere         | 364                    | 83                                      | 23   | 311                    | 58                                      | 19   |
| Lamar**          | 2,185                  | 1,082                                   | 50   | 2,295                  | 685                                     | 30   |
| Lee              | 1,058                  | 256                                     | 24   | 1,039                  | 293                                     | 28   |
| Madison          | 1,505                  | 346                                     | 23   | 1,407                  | 307                                     | 22   |
| Milby            | 1,474                  | 273                                     | 19   | 1,323                  | 299                                     | 23   |
| Mt. Carmel       | 198                    | 66                                      | 33   | 245                    | 54                                      | 22   |
| N. Houston EC    | 183                    | 89                                      | 49   | 284                    | 114                                     | 40   |
| Reagan           | 1,254                  | 310                                     | 25   | 1,400                  | 381                                     | 27   |
| Scarborough      | 449                    | 96                                      | 21   | 445                    | 157                                     | 35   |
| Sharpstown       | 796                    | 280                                     | 35   | 824                    | 292                                     | 35   |
| Sharpstown Int'l | 238                    | 228                                     | 96   | 297                    | 181                                     | 61   |
| Sterling         | 687                    | 165                                     | 24   | 599                    | 117                                     | 20   |
| Waltrip          | 1,175                  | 330                                     | 28   | 1,201                  | 337                                     | 28   |
| Washington       | 586                    | 142                                     | 24   | 551                    | 145                                     | 26   |
| Westbury         | 1,454                  | 315                                     | 22   | 1,477                  | 456                                     | 31   |
| Westside         | 2,158                  | 1,154                                   | 54   | 2,165                  | 909                                     | 42   |
| Wheatley         | 676                    | 155                                     | 23   | 616                    | 143                                     | 23   |
| Worthing         | 638                    | 186                                     | 29   | 524                    | 123                                     | 24   |
| Yates            | 776                    | 143                                     | 18   | 658                    | 136                                     | 21   |
| <b>HISD</b>      | <b>31,103</b>          | <b>10,966</b>                           | <b>35</b>                                    | <b>32,184</b>          | <b>10,583</b>                           | <b>33</b>                                    |

\*Fewer than 5 students.

\*\*Bellaire and Lamar high schools offer the International Baccalaureate Program.

Note: Enrollment is based on PEIMS Fall Snapshot and AP course enrollment is from Chancery end-of-year file.

**Appendix E: Advanced Placement (AP) Report for 2011-12**  
**AP Exam Results of High School Students (9th thru 12th Grades and Grade Level Not Indicated) by Exam and by Campus**  
**Reported as Number of Students Who Scored 3 or Higher Versus Number of Exams Taken (to be continued)**

| AP Exam Title                        | N Scoring 3 or Higher |      | Austin HS | Bellaire HS | Carnegie Vanguard HS | Challenge HS | Chavez HS | CLC HS/DeVry Academy | Davis HS | DeBakey HS | East Early College HS | Eastwood Academy | Empowerment College Prep. HS | Energized for E-STEM Southeast HS | Energized for E-STEM West HS | Furr HS | High School LECJ | High School PVA | Houston Academy for Int'l Studies | Houston Math/Sci/Tech. Center | Jones HS | Jordan HS | Kashmere HS | Lamar HS | Lee HS   | Madison HS | Milby HS | Mount Carmel Academy | North Houston Early College HS | Reagan HS | Scarborough HS | Sharpstown HS | Additional Schools Appended After Campus Totals |  |
|--------------------------------------|-----------------------|------|-----------|-------------|----------------------|--------------|-----------|----------------------|----------|------------|-----------------------|------------------|------------------------------|-----------------------------------|------------------------------|---------|------------------|-----------------|-----------------------------------|-------------------------------|----------|-----------|-------------|----------|----------|------------|----------|----------------------|--------------------------------|-----------|----------------|---------------|---|--|
|                                      | N Exams Taken         |      |           |             |                      |              |           |                      |          |            |                       |                  |                              |                                   |                              |         |                  |                 |                                   |                               |          |           |             |          |          |            |          |                      |                                |           |                |               |   |  |
|                                      | % Scoring 3 or Higher |      |           |             |                      |              |           |                      |          |            |                       |                  |                              |                                   |                              |         |                  |                 |                                   |                               |          |           |             |          |          |            |          |                      |                                |           |                |               |   |  |
| Art History                          | 59<br>183             | 32.2 |           | 20<br>27    | 15<br>19             |              |           |                      |          |            |                       | 10<br>19         |                              |                                   |                              |         |                  |                 |                                   |                               |          | 0<br>11   |             | 1<br>45  |          |            |          |                      |                                | *3        | 0<br>17        |               |   |  |
|                                      |                       |      |           | 74.1        | 78.9                 |              |           |                      |          |            |                       | 52.6             |                              |                                   |                              |         |                  |                 |                                   |                               |          | 0.0       |             | 2.2      |          |            |          |                      |                                | *         | 0.0            |               |   |  |
| Art: Studio Art-2-D Design Portfolio | 32<br>56              | 57.1 | 4<br>10   | 9<br>9      | *<br>4               |              |           |                      |          |            |                       | *<br>2           |                              |                                   |                              | *<br>3  | *<br>4           |                 |                                   |                               | *3       |           |             |          |          |            |          |                      |                                |           | *<br>2         | 5<br>5        |   |  |
|                                      |                       |      | 40.0      | 100.0       | *                    |              |           |                      |          |            |                       | *                |                              |                                   |                              | *       | *                |                 |                                   |                               | *        |           |             |          |          |            |          |                      |                                | *         | 100.0          |               |   |  |
| Art: Studio Art-3-D Design Portfolio | *<br>1                | *    |           |             |                      |              |           |                      |          |            |                       |                  |                              |                                   |                              |         |                  |                 |                                   |                               |          |           |             |          |          |            |          |                      |                                |           |                |               |   |  |
| Art: Studio Art-Drawing Portfolio    | 13<br>50              | 26.0 | 1<br>23   | *<br>1      |                      |              | *<br>3    |                      |          |            |                       | *<br>3           |                              |                                   |                              |         |                  |                 |                                   | 3<br>7                        |          |           |             |          | *3       |            |          |                      |                                |           | *<br>2         | *<br>4        |   |  |
|                                      |                       |      | 4.3       | *           |                      |              | *         |                      |          |            |                       | *                |                              |                                   |                              |         |                  |                 |                                   | 42.9                          |          |           |             | *        |          | *          |          |                      |                                | *         | *              |               |   |  |
| Biology                              | 266<br>739            | 36.0 | 0<br>5    | 82<br>99    | 19<br>30             |              | 0<br>24   |                      | 0<br>23  | 110<br>135 | 3<br>17               | 3<br>13          | 1<br>20                      | 0<br>37                           |                              | 0<br>31 |                  | 16<br>25        | 0<br>13                           |                               |          |           |             | 0<br>10  | 0<br>11  | 2<br>54    |          | 0<br>6               | 1<br>19                        | 0<br>16   | 0<br>13        |               |   |  |
|                                      |                       |      | 0.0       | 82.8        | 63.3                 |              | 0.0       |                      | 0.0      | 81.5       | 17.6                  | 23.1             | 5.0                          | 0.0                               |                              | 0.0     |                  | 64.0            | 0.0                               |                               |          |           | 0.0         | 0.0      | 3.7      |            | 0.0      | 5.3                  | 0.0                            | 0.0       |                |               |   |  |
| Calculus AB                          | 349<br>876            | 39.8 | 1<br>25   | 58<br>72    | 15<br>17             |              | 2<br>28   |                      | 2<br>34  | 150<br>174 | 3<br>13               | 7<br>13          |                              | 0<br>23                           |                              | 0<br>11 | 0<br>18          | 15<br>41        | 0<br>10                           | 2<br>23                       |          |           | *3          | 29<br>64 | 11<br>49 | 0<br>9     | 7<br>26  | *3                   | 0<br>8                         | 7<br>23   | 0<br>6         | 5<br>22       |   |  |
|                                      |                       |      | 4.0       | 80.6        | 88.2                 |              | 7.1       |                      | 5.9      | 86.2       | 23.1                  | 53.8             |                              | 0.0                               |                              | 0.0     | 0.0              | 36.6            | 0.0                               | 8.7                           |          | *         |             | 45.3     | 22.4     | 0.0        | 26.9     | *                    | 0.0                            | 30.4      | 0.0            | 22.7          |   |  |
| Calculus BC                          | 187<br>214            | 87.4 |           | 92<br>99    | 5<br>5               |              |           |                      | *<br>1   | 42<br>42   | *<br>4                |                  |                              |                                   |                              |         |                  |                 |                                   |                               |          |           | 8<br>12     | *<br>1   |          |            |          |                      |                                |           |                |               |   |  |
|                                      |                       |      |           | 92.9        | 100.0                |              |           |                      | *        | 100.0      | *                     |                  |                              |                                   |                              |         |                  |                 |                                   |                               |          |           | 66.7        | *        |          |            |          |                      |                                |           |                |               |   |  |
| Chemistry                            | 128<br>436            | 29.4 |           | 42<br>53    | 8<br>10              |              | 0<br>16   |                      |          | 48<br>55   | *<br>3                |                  |                              | 0<br>29                           | 0<br>14                      | 0<br>26 |                  |                 | 1<br>17                           |                               | 0<br>9   |           |             | 0<br>26  |          | 0<br>19    |          |                      | 0<br>14                        | *<br>3    | 0<br>6         |               |   |  |
|                                      |                       |      |           | 79.2        | 80.0                 |              | 0.0       |                      |          | 87.3       | *                     |                  |                              | 0.0                               | 0.0                          | 0.0     |                  |                 | 5.9                               |                               | 0.0      |           |             | 0.0      |          | 0.0        |          |                      | 0.0                            | *         |                | 0.0           |   |  |

Data from the College Board AP datafile (July 30, 2012)

**Appendix E: Advanced Placement (AP) Report for 2011-12**  
**AP Exam Results of High School Students (9th thru 12th Grades and Grade Level Not Indicated) by Exam and by Campus**  
**Reported as Number of Students Who Scored 3 or Higher Versus Number of Exams Taken (to be continued)**

| AP Exam Title                    | N Scoring 3 or Higher |      | Austin HS | Bellaire HS | Carnegie Vanguard HS | Challenge HS | Chavez HS | CLC HS/DeVry Academy | Davis HS | DeBakey HS | East Early College HS | Eastwood Academy | Empowerment College Prep. HS | Energized for E-STEM Southeast HS | Energized for E-STEM West HS | Furr HS | High School LECJ | High School PVA | Houston Academy for Int'l Studies | Houston Math/Sci./Tech. Center | Jones HS | Jordan HS | Kashmere HS | Lamar HS  | Lee HS   | Madison HS | Milby HS | Mount Carmel Academy | North Houston Early College HS | Reagan HS | Scarborough HS | Sharpstown HS | Additional Schools Appended After Campus Totals |   |
|----------------------------------|-----------------------|------|-----------|-------------|----------------------|--------------|-----------|----------------------|----------|------------|-----------------------|------------------|------------------------------|-----------------------------------|------------------------------|---------|------------------|-----------------|-----------------------------------|--------------------------------|----------|-----------|-------------|-----------|----------|------------|----------|----------------------|--------------------------------|-----------|----------------|---------------|---|---|
|                                  | N Exams Taken         |      |           |             |                      |              |           |                      |          |            |                       |                  |                              |                                   |                              |         |                  |                 |                                   |                                |          |           |             |           |          |            |          |                      |                                |           |                |               |   |   |
|                                  | % Scoring 3 or Higher |      |           |             |                      |              |           |                      |          |            |                       |                  |                              |                                   |                              |         |                  |                 |                                   |                                |          |           |             |           |          |            |          |                      |                                |           |                |               |   |   |
| Chinese Language & Culture       | 36<br>41              | 87.8 | —         | 23<br>24    | —                    | —            | —         | —                    | —        | *<br>1     | —                     | —                | —                            | —                                 | —                            | *<br>4  | —                | —               | —                                 | —                              | —        | —         | —           | —         | —        | —          | —        | —                    | —                              | —         | —              | —             | —   | — |
|                                  |                       |      |           | 95.8        |                      | —            | —         | —                    | —        | *          | —                     | —                | —                            | —                                 | —                            | *       | —                | —               | —                                 | —                              | —        | —         | —           | —         | —        | —          | —        | —                    | —                              | —         | —              | —             | —   | — |
| Computer Science A               | 47<br>151             | 31.1 | —         | 30<br>74    | 12<br>13             | —            | —         | —                    | —        | —          | —                     | *<br>1           | —                            | —                                 | —                            | —       | —                | —               | —                                 | —                              | —        | *         | 1           | —         | 0<br>9   | —          | —        | —                    | —                              | —         | 1<br>47        | —             | —   | — |
|                                  |                       |      |           | 40.5        | 92.3                 | —            | —         | —                    | —        | —          | —                     | *                | —                            | —                                 | —                            | —       | —                | —               | —                                 | —                              | —        | *         | —           | 0.0       | —        | —          | —        | —                    | —                              | 2.1       | —              | —             | —   |   |
| Computer Science AB              | —                     | —    | —         | —           | —                    | —            | —         | —                    | —        | —          | —                     | —                | —                            | —                                 | —                            | —       | —                | —               | —                                 | —                              | —        | —         | —           | —         | —        | —          | —        | —                    | —                              | —         | —              | —             | —   |   |
| Economics: Macroeconomics        | 347<br>1245           | 27.9 | 0<br>26   | 229<br>275  | 9<br>12              | —            | 0<br>27   | —                    | 0<br>16  | 53<br>67   | —                     | —                | —                            | —                                 | —                            | —       | 4<br>72          | 3<br>83         | —                                 | 11<br>46                       | 0<br>32  | —         | 0<br>16     | —         | 0<br>41  | 0<br>17    | 7<br>82  | —                    | —                              | 0<br>66   | 0<br>20        | 0<br>62       | —   | — |
|                                  |                       |      | 0.0       | 83.3        | 75.0                 | —            | 0.0       | —                    | 0.0      | 79.1       | —                     | —                | —                            | —                                 | —                            | —       | 5.6              | 3.6             | —                                 | 23.9                           | 0.0      | —         | 0.0         | —         | 0.0      | 0.0        | 8.5      | —                    | —                              | 0.0       | 0.0            | 0.0           | —   | — |
| Economics: Microeconomics        | 82<br>201             | 40.8 | —         | 48<br>50    | 33<br>71             | —            | —         | —                    | 0<br>15  | —          | —                     | —                | —                            | 0<br>40                           | —                            | —       | —                | —               | —                                 | —                              | —        | —         | —           | —         | —        | —          | —        | —                    | —                              | —         | —              | —             | —   | — |
|                                  |                       |      |           | 96.0        | 46.5                 | —            | —         | —                    | 0.0      | —          | —                     | —                | —                            | 0.0                               | —                            | —       | —                | —               | —                                 | —                              | —        | —         | —           | —         | —        | —          | —        | —                    | —                              | —         | —              | —             | —   | — |
| English Language & Composition   | 799<br>2968           | 26.9 | 11<br>36  | 233<br>264  | 91<br>116            | 9<br>26      | 28<br>122 | 0<br>6               | 12<br>94 | 81<br>83   | 3<br>63               | 13<br>73         | *<br>3                       | 0<br>63                           | 0<br>14                      | 2<br>82 | 10<br>83         | 69<br>95        | 0<br>26                           | 3<br>103                       | 0<br>13  | 1<br>96   | 0<br>18     | 60<br>284 | 6<br>82  | 3<br>70    | 4<br>102 | 4<br>26              | 8<br>73                        | 12<br>73  | 1<br>52        | 2<br>89       | —   |   |
|                                  |                       |      | 30.6      | 88.3        | 78.4                 | 34.6         | 23.0      | 0.0                  | 12.8     | 97.6       | 4.8                   | 17.8             | *                            | 0.0                               | 0.0                          | 2.4     | 12.0             | 72.6            | 0.0                               | 2.9                            | 0.0      | 1.0       | 0.0         | 21.1      | 7.3      | 4.3        | 3.9      | 15.4                 | 11.0                           | 16.4      | 1.9            | 2.2           | —   |   |
| English Literature & Composition | 500<br>1887           | 26.5 | 3<br>29   | 151<br>174  | 59<br>83             | 23<br>41     | 8<br>86   | —                    | 4<br>73  | 57<br>59   | —                     | 4<br>34          | —                            | —                                 | —                            | 1<br>28 | 1<br>81          | 65<br>83        | 4<br>27                           | 7<br>135                       | 0<br>28  | 1<br>73   | 0<br>11     | —         | 4<br>102 | 0<br>30    | 8<br>87  | 2<br>25              | 0<br>5                         | 7<br>42   | 3<br>28        | 0<br>60       | —   |   |
|                                  |                       |      | 10.3      | 86.8        | 71.1                 | 56.1         | 9.3       | —                    | 5.5      | 96.6       | —                     | 11.8             | —                            | —                                 | —                            | 3.6     | 1.2              | 78.3            | 14.8                              | 5.2                            | 0.0      | 1.4       | 0.0         | —         | 3.9      | 0.0        | 9.2      | 8.0                  | 0.0                            | 16.7      | 10.7           | 0.0           | —   |   |
| Environmental Science            | 132<br>574            | 23.0 | 0<br>6    | 56<br>77    | 9<br>11              | —            | 0<br>19   | —                    | —        | —          | 3<br>41               | 3<br>35          | 0<br>18                      | 0<br>12                           | —                            | 0<br>14 | 0<br>43          | —               | —                                 | 3<br>60                        | —        | —         | —           | —         | 0<br>7   | *<br>2     | 8<br>29  | —                    | —                              | 2<br>17   | 0<br>15        | —             | —   |   |
|                                  |                       |      | 0.0       | 72.7        | 81.8                 | —            | 0.0       | —                    | —        | —          | 7.3                   | 8.6              | 0.0                          | 0.0                               | —                            | 0.0     | 0.0              | —               | —                                 | 5.0                            | —        | —         | —           | 0.0       | *        | 27.6       | —        | —                    | 11.8                           | 0.0       | —              | —             |   |   |

Data from the College Board AP datafile (July 30, 2012)

AP Exam Results of High School Students (9th thru 12th Grades and Grade Level Not Indicated) by Exam and by Campus  
Reported as Number of Students Who Scored 3 or Higher Versus Number of Exams Taken (to be continued)

[illegible]

Data from the College Board AP datafile (July 30, 2012)

**Appendix E: Advanced Placement (AP) Report for 2011-12**  
**AP Exam Results of High School Students (9th thru 12th Grades and Grade Level Not Indicated) by Exam and by Campus**  
**Reported as Number of Students Who Scored 3 or Higher Versus Number of Exams Taken (to be continued)**

| AP Exam Title                      | N Scoring 3 or Higher |       | Austin HS | Bellaire HS | Carnegie Vanguard HS | Challenge HS | Chavez HS | CLC HS/DeVry Academy | Davis HS | DeBakey HS | East Early College HS | Eastwood Academy | Empowerment College Prep. HS | Energized for E-STEM Southeast HS | Energized for E-STEM West HS | Furr HS | High School LECJ | High School PVA | Houston Academy for Int'l Studies | Houston Math/Sci/Tech. Center | Jones HS | Jordan HS | Kashmere HS | Lamar HS | Lee HS | Madison HS | Milby HS | Mount Carmel Academy | North Houston Early College HS | Reagan HS | Scarborough HS | Sharpstown HS | Additional Schools Appended After Campus Totals |
|------------------------------------|-----------------------|-------|-----------|-------------|----------------------|--------------|-----------|----------------------|----------|------------|-----------------------|------------------|------------------------------|-----------------------------------|------------------------------|---------|------------------|-----------------|-----------------------------------|-------------------------------|----------|-----------|-------------|----------|--------|------------|----------|----------------------|--------------------------------|-----------|----------------|---------------|---|
|                                    | N Exams Taken         |       |           |             |                      |              |           |                      |          |            |                       |                  |                              |                                   |                              |         |                  |                 |                                   |                               |          |           |             |          |        |            |          |                      |                                |           |                |               |   |
|                                    | % Scoring 3 or Higher |       |           |             |                      |              |           |                      |          |            |                       |                  |                              |                                   |                              |         |                  |                 |                                   |                               |          |           |             |          |        |            |          |                      |                                |           |                |               |   |
| Japanese Language & Culture        | 6                     | 100.0 |           | *<br>3      |                      |              |           |                      |          |            |                       |                  |                              |                                   |                              |         |                  |                 |                                   |                               |          |           |             |          |        |            |          |                      |                                |           |                |               |   |
| Latin: Literature                  |                       |       |           |             |                      |              |           |                      |          |            |                       |                  |                              |                                   |                              |         |                  |                 |                                   |                               |          |           |             |          |        |            |          |                      |                                |           |                |               |   |
| Latin: Vergil                      | 3                     | 30.0  |           | *<br>4      |                      |              |           |                      |          |            |                       |                  |                              |                                   |                              |         |                  |                 |                                   |                               |          |           |             |          |        |            |          |                      |                                |           |                |               |   |
| Music Theory                       | 35                    | 30.2  |           | 8<br>9      |                      |              |           |                      |          |            |                       |                  |                              |                                   | 0<br>15                      |         | 24<br>24         | 0<br>11         | *<br>3                            | 0<br>14                       |          |           |             |          |        | 0<br>12    |          |                      |                                |           |                |               | *<br>4  |
|                                    |                       |       |           | 88.9        |                      |              |           |                      |          |            |                       |                  |                              |                                   | 0.0                          |         | 100.0            | 0.0             | *                                 | 0.0                           |          |           |             |          | 0.0    |            |          |                      |                                |           |                | *             |   |
| Physics B                          | 129                   | 26.6  | 0<br>18   | 44<br>52    |                      | 0<br>60      |           | *<br>1               | 40<br>43 |            |                       |                  |                              |                                   | 0<br>22                      | 0<br>21 | 11<br>11         |                 | 0<br>19                           |                               | 0<br>10  |           |             | 1<br>23  |        | 1<br>16    |          | 1<br>29              | 1<br>60                        | 0<br>8    | 4<br>21        |               |   |
|                                    |                       |       | 0.0       | 84.6        |                      | 0.0          |           | *                    | 93.0     |            |                       |                  |                              |                                   | 0.0                          | 0.0     | 100.0            |                 | 0.0                               |                               | 0.0      |           |             | 4.3      |        | 6.3        |          | 3.4                  | 1.7                            | 0.0       | 19.0           |               |   |
| Physics C: Electricity & Magnetism | 26                    | 59.1  |           | 9<br>12     | 6<br>11              |              |           |                      | *<br>1   |            |                       |                  |                              |                                   |                              |         |                  |                 |                                   |                               |          |           |             |          |        |            |          |                      |                                |           |                |               |   |
|                                    | 44                    |       |           | 75.0        | 54.5                 |              |           |                      | *        |            |                       |                  |                              |                                   |                              |         |                  |                 |                                   |                               |          |           |             |          |        |            |          |                      |                                |           |                |               |   |
| Physics C: Mechanics               | 39                    | 72.2  |           | 11<br>12    | 9<br>11              |              |           |                      | *<br>2   |            |                       |                  |                              |                                   |                              |         |                  |                 |                                   |                               |          |           |             |          |        |            |          |                      |                                |           |                |               |   |
|                                    | 54                    |       |           | 91.7        | 81.8                 |              |           |                      | *        |            |                       |                  |                              |                                   |                              |         |                  |                 |                                   |                               |          |           |             |          |        |            |          |                      |                                |           |                |               |   |
| Psychology                         | 233                   | 42.6  |           | 136<br>157  | *<br>1               |              |           |                      | 45<br>47 |            |                       | *                | 0<br>43                      |                                   | 0<br>55                      | 1<br>7  |                  |                 | 1<br>17                           |                               | 0<br>9   | 0<br>16   |             | 3<br>19  | *<br>1 |            |          |                      |                                |           | 0<br>16        |               |   |
|                                    | 547                   |       |           | 86.6        | *                    |              |           |                      | 95.7     |            |                       | *                | 0.0                          |                                   | 0.0                          | 14.3    |                  | 5.9             |                                   | 0.0                           | 0.0      |           | 15.8        | *        |        |            |          |                      |                                | 0.0       |                |               |   |

Data from the College Board AP datafile (July 30, 2012)

AP Exam Results of High School Students (9th thru 12th Grades and Grade Level Not Indicated) by Exam and by Campus  
Reported as Number of Students Who Scored 3 or Higher Versus Number of Exams Taken (to be continued)

| AP Exam Title         | N Scoring 3 or Higher |      | Additional Schools Appended After Campus Totals |      |      |      |       |     |      |      |      |      |      |     |     |     |      |      |      |      |      |     |      |      |     |      |      |      |     |      |      |      |      |
|-----------------------|-----------------------|------|---|------|------|------|-------|-----|------|------|------|------|------|-----|-----|-----|------|------|------|------|------|-----|------|------|-----|------|------|------|-----|------|------|------|------|
|                       | N Exams Taken         |      |   |      |      |      |       |     |      |      |      |      |      |     |     |     |      |      |      |      |      |     |      |      |     |      |      |      |     |      |      |      |      |
|                       | % Scoring 3 or Higher |      |   |      |      |      |       |     |      |      |      |      |      |     |     |     |      |      |      |      |      |     |      |      |     |      |      |      |     |      |      |      |      |
| Spanish Language      | 1408<br>2432          | 57.9 | 73  | 80   | 15   | 55   | 135   |     | 78   | 28   | 61   | 103  | 6    |     |     | 10  | 28   | 7    | 47   | 71   | *    | 29  |      | *    | 26  | 34   | 138  |      | 6   | 45   | 5    | 61   |      |
|                       |                       |      | 139   | 95   | 20   | 66   | 270   |     | 106  | 31   | 93   | 140  | 8    |     |     |     | 84   | 40   | 17   | 62   | 121  | 1   | 50   |      | 1   | 35   | 103  | 207  |     | 8    | 49   | 11   | 140  |
|                       |                       |      | 52.5  | 84.2 | 75.0 | 83.3 | 50.0  |     | 73.6 | 90.3 | 65.6 | 73.6 | 75.0 |     |     |     | 11.9 | 70.0 | 41.2 | 75.8 | 58.7 | *   | 58.0 |      | *   | 74.3 | 33.0 | 66.7 |     | 75.0 | 91.8 | 45.5 | 43.6 |
| Spanish Literature    | 90<br>161             | 55.9 | 7   | 14   | *    |      | 18    |     | 4    |      | 1    | 5    |      |     |     |     | 7    |      |      |      |      | *   |      |      | 1   |      | 6    |      |     | 6    |      |      |      |
|                       |                       |      | 10  | 21   | 2    |      | 18    |     | 7    |      | 10   | 6    |      |     |     |     | 9    |      |      |      |      | 2   |      |      | 6   |      | 18   |      |     | 20   |      |      |      |
|                       |                       |      | 70.0  | 66.7 | *    |      | 100.0 |     | 57.1 |      | 10.0 | 83.3 |      |     |     |     | 77.8 |      |      |      |      | *   |      |      |     | 16.7 |      | 33.3 |     |      | 30.0 |      |      |
| Statistics            | 249<br>532            | 46.8 | 1   | 115  | 35   |      |       |     | 1    | 33   | 0    | 20   |      |     |     | *   |      | *    | 0    | 1    |      | 2   |      |      | 0   |      | 1    |      |     | 4    |      | 12   |      |
|                       |                       |      | 7   | 133  | 57   |      |       |     | 18   | 36   | 9    | 36   |      |     |     | 4   |      | 1    | 27   | 23   |      | 18  |      |      | 8   |      | 9    |      |     | 50   |      | 23   |      |
|                       |                       |      | 14.3  | 86.5 | 61.4 |      |       |     | 5.6  | 91.7 | 0.0  | 55.6 |      |     |     | *   |      | *    | 0.0  | 4.3  |      |     | 11.1 |      |     | 0.0  |      | 11.1 |     |      | 8.0  |      | 52.2 |
| United States History | 545<br>2327           | 23.4 | 4   | 225  | 57   |      | 4     |     | 8    | 72   |      | 17   |      | 1   | 0   | 0   | 6    | 45   | 1    | 3    | 0    | 1   | 0    |      | 2   | 2    | 7    | 0    | 4   | 11   | 0    | 2    |      |
|                       |                       |      | 26  | 267  | 116  |      | 142   |     | 57   | 75   |      | 72   |      | 29  | 14  | 90  | 89   | 96   | 43   | 67   | 15   | 57  | 17   |      | 81  | 83   | 28   | 25   | 67  | 74   | 33   | 84   |      |
|                       |                       |      | 15.4  | 84.3 | 49.1 |      | 2.8   |     | 14.0 | 96.0 |      | 23.6 |      | 3.4 | 0.0 | 0.0 | 6.7  | 46.9 | 2.3  | 4.5  | 0.0  | 1.8 | 0.0  |      | 2.5 | 2.4  | 25.0 | 0.0  | 6.0 | 14.9 | 0.0  | 2.4  |      |
| World History         | 605<br>3214           | 18.8 | 1   | 161  | 88   | 14   | 4     |     | 5    | 63   | 2    | 25   | 1    | 0   | 0   | 0   | 5    | 47   | 7    | 2    | 0    | 0   | 0    | 54   | 2   | 0    | 13   |      | *   | 7    | 0    | 1    |      |
|                       |                       |      | 120   | 202  | 115  | 114  | 219   |     | 78   | 77   | 56   | 55   | 19   | 23  | 24  | 73  | 111  | 144  | 102  | 67   | 23   | 62  | 16   | 498  | 27  | 56   | 48   |      | 2   | 97   | 22   | 73   |      |
|                       |                       |      | 0.8   | 79.7 | 76.5 | 12.3 | 1.8   |     | 6.4  | 81.8 | 3.6  | 45.5 | 5.3  | 0.0 | 0.0 | 0.0 | 4.5  | 32.6 | 6.9  | 3.0  | 0.0  | 0.0 | 0.0  | 10.8 | 7.4 | 0.0  | 27.1 |      | *   | 7.2  | 0.0  | 1.4  |      |
| TOTAL                 | 7106<br>23227         | 30.6 | 107   | 2135 | 651  | 133  | 199   | 0   | 117  | 879  | 76   | 229  | 9    | 1   | 0   | 16  | 66   | 306  | 60   | 113  | 1    | 36  | 0    | 246  | 56  | 39   | 204  | 7    | 22  | 113  | 18   | 87   |      |
|                       |                       |      | 516   | 2599 | 988  | 368  | 1073  | 6   | 552  | 992  | 309  | 584  | 105  | 355 | 66  | 653 | 645  | 707  | 338  | 794  | 170  | 402 | 113  | 1714 | 575 | 524  | 841  | 93   | 223 | 723  | 314  | 695  |      |
|                       |                       |      | 20.7  | 82.1 | 65.9 | 36.1 | 18.5  | 0.0 | 21.2 | 88.6 | 24.6 | 39.2 | 8.6  | 0.3 | 0.0 | 2.5 | 10.2 | 43.3 | 17.8 | 14.2 | 0.6  | 9.0 | 0.0  | 14.4 | 9.7 | 7.4  | 24.3 | 7.5  | 9.9 | 15.6 | 5.7  | 12.5 |      |

Data from the College Board AP datafile (July 30, 2012)



**AP Exam Results of High School Students (9th thru 12th Grades and Grade Level Not Indicated) by Exam and by Campus  
Reported as Number of Students Who Scored 3 or Higher Versus Number of Exams Taken (continued)**

[illegible]

Data from the College Board AP datafile (July 30, 2012)

**AP Exam Results of High School Students (9th thru 12th Grades and Grade Level Not Indicated) by Exam and by Campus  
Reported as Number of Students Who Scored 3 or Higher Versus Number of Exams Taken (continued)**

[illegible]

Data from the College Board AP datafile (July 30, 2012)

**AP Exam Results of High School Students (9th thru 12th Grades and Grade Level Not Indicated) by Exam and by Campus  
Reported as Number of Students Who Scored 3 or Higher Versus Number of Exams Taken (continued)**

[illegible]

Data from the College Board AP datafile (July 30, 2012)

## Appendix E: Advanced Placement (AP) Report for 2011-12

[illegible]

Data from the College Board AP datafile (July 30, 2012)

**AP Exam Results of High School Students (9th thru 12th Grades and Grade Level Not Indicated) by Exam and by Campus  
Reported as Number of Students Who Scored 3 or Higher Versus Number of Exams Taken (continued)**

[illegible]

Data from the College Board AP datafile (July 30, 2012)

**Appendix F: 2012 AP Course and Exam Data by Campus, Grades 9–12 (Duplicated Count)**

| <b>School</b>         | <b>Grade<br/>10-12<br/>Enroll.</b> | <b>AP<br/>Courses<br/>Offered</b> | <b>AP<br/>Course<br/>Enroll.</b> | <b>N Comp.<br/>AP<br/>Course</b> | <b>% Comp.<br/>AP<br/>Course<br/>(of AP<br/>Enroll.)</b> | <b>N Exams<br/>Taken</b> | <b>N Exams<br/>Score 3+</b> | <b>Rate of<br/>Exams<br/>Taken<br/>(by AP<br/>Comp.)</b> | <b>Rate of<br/>Exams<br/>3+<br/>(of AP<br/>Comp.)</b> |
|-----------------------|------------------------------------|-----------------------------------|----------------------------------|----------------------------------|--|--------------------------|-----------------------------|--|---|
| Austin                | 1,205                              | 15                                | 439                              | 350                              | 79.7   | 516                      | 107                         | 147.4  | 30.6  |
| Bellaire <sup>†</sup> | 2,478                              | 22                                | 2,320                            | 2,272                            | 97.9   | 2,599                    | 2,135                       | 114.4  | 94.0  |
| Carnegie              | 319                                | 23                                | 1,006                            | 946                              | 94.0   | 988                      | 651                         | 104.4  | 68.8  |
| Challenge             | 324                                | 3                                 | 276                              | 223                              | 80.8   | 368                      | 133                         | 165.0  | 59.6  |
| Chavez                | 1,745                              | 16                                | 973                              | 875                              | 89.9   | 1,073                    | 199                         | 122.6  | 22.7  |
| CLC                   | 24                                 | 2                                 | 8                                | 4                                | 50.0   | 6                        | 0                           | 150.0  | 0.0   |
| Davis                 | 1,024                              | 13                                | 545                              | 476                              | 87.3   | 552                      | 117                         | 116.0  | 24.6  |
| DeBakey               | 600                                | 14                                | 1,044                            | 1,007                            | 96.5   | 992                      | 879                         | 98.5   | 87.3  |
| East Early Col.       | 316                                | 8                                 | 206                              | 203                              | 98.5   | 309                      | 76                          | 152.2  | 37.4  |
| Eastwood              | 288                                | 16                                | 486                              | 434                              | 89.3   | 584                      | 229                         | 134.6  | 52.8  |
| Empowerment           | 58                                 | 6                                 | 103                              | 76                               | 73.8   | 105                      | 9                           | 138.2  | 11.8  |
| E-STEM C              | 99                                 | 10                                | 324                              | 284                              | 87.7   | 355                      | 1                           | 125.0  | 0.4   |
| E-STEM W              | 83                                 | 4                                 | 136                              | 136                              | 100.0  | 66                       | 0                           | 48.5   | 0.0   |
| Furr                  | 516                                | 17                                | 948                              | 781                              | 82.4   | 653                      | 16                          | 83.6   | 2.0   |
| Houston Acad Int'l    | 281                                | 10                                | 322                              | 291                              | 90.4   | 338                      | 60                          | 116.2  | 20.6  |
| Houston M/S/T         | 1,717                              | 14                                | 831                              | 767                              | 92.3   | 794                      | 113                         | 103.5  | 14.7  |
| HSLECJ                | 388                                | 12                                | 669                              | 631                              | 94.3   | 645                      | 66                          | 102.2  | 10.5  |
| HSPVA                 | 480                                | 11                                | 732                              | 729                              | 99.6   | 707                      | 306                         | 97.0   | 42.0  |
| Jones                 | 312                                | 10                                | 194                              | 186                              | 95.9   | 170                      | 1                           | 91.4   | 0.5   |
| Jordan                | 712                                | 13                                | 488                              | 450                              | 92.2   | 402                      | 36                          | 89.3   | 8.0   |
| Kashmere              | 311                                | 8                                 | 111                              | 110                              | 99.1   | 113                      | 0                           | 102.7  | 0.0   |
| Lamar <sup>†</sup>    | 2,295                              | 5                                 | 1,640                            | 1,477                            | 90.1   | 1,714                    | 246                         | 116.0  | 16.7  |
| Lee                   | 1,039                              | 17                                | 610                              | 548                              | 89.8   | 575                      | 56                          | 104.9  | 10.2  |
| Madison               | 1,407                              | 14                                | 645                              | 556                              | 86.2   | 524                      | 39                          | 94.2   | 7.0   |
| Milby                 | 1,323                              | 15                                | 725                              | 653                              | 90.1   | 841                      | 204                         | 128.8  | 31.2  |
| Mt. Carmel            | 245                                | 5                                 | 85                               | 81                               | 95.3   | 93                       | 7                           | 114.8  | 8.6   |
| N. Houston EC         | 284                                | 7                                 | 187                              | 154                              | 82.4   | 223                      | 22                          | 144.8  | 14.3  |
| Reagan                | 1,400                              | 19                                | 823                              | 777                              | 94.4   | 723                      | 113                         | 93.1   | 14.5  |
| Scarborough           | 445                                | 15                                | 417                              | 357                              | 85.6   | 314                      | 18                          | 88.0   | 5.0   |
| Sharpstown            | 824                                | 14                                | 607                              | 546                              | 90.0   | 695                      | 87                          | 127.3  | 15.9  |
| Sharpstown Int'l      | 297                                | 16                                | 441                              | 396                              | 89.8   | 354                      | 46                          | 89.4   | 11.6  |
| Sterling              | 599                                | 12                                | 243                              | 206                              | 84.8   | 206                      | 4                           | 100.0  | 1.9   |
| Waltrip               | 1,201                              | 16                                | 688                              | 604                              | 87.8   | 567                      | 98                          | 93.9   | 16.2  |
| Washington            | 551                                | 12                                | 430                              | 315                              | 73.3   | 252                      | 27                          | 80.0   | 8.6   |
| Westbury              | 1,477                              | 19                                | 1,077                            | 933                              | 86.6   | 1,130                    | 143                         | 121.1  | 15.3  |
| Westside              | 2,165                              | 29                                | 2,063                            | 1,942                            | 94.1   | 1,859                    | 840                         | 95.7   | 43.3  |
| Wheatley              | 616                                | 13                                | 348                              | 316                              | 90.8   | 346                      | 14                          | 109.5  | 4.4   |
| Worthing              | 524                                | 13                                | 249                              | 232                              | 93.2   | 228                      | 7                           | 98.3   | 3.0   |
| Yates                 | 658                                | 16                                | 236                              | 213                              | 90.3   | 166                      | 0                           | 77.9   | 0.0   |
| Young Women's         | 0                                  | 1                                 | 77                               | 51                               | 66.2   | 82                       | 1                           | 160.8  | 2.0   |
| <b>HISD</b>           | <b>32,184</b>                      |                                   | <b>23,752</b>                    | <b>21,588</b>                    | <b>90.9</b>  | <b>23,227</b>            | <b>7,106</b>                | <b>107.6</b>   | <b>32.9</b>   |

Note: Exam and course counts presented are duplicated counts. A student may take more than one AP exam or course.

<sup>†</sup> Bellaire and Lamar high schools offer the International Baccalaureate (IB) Program.

**Appendix G: AP Scholar Awards 2011 and 2012**

| School             | 2011       |            |             |            |              | 2012       |            |             |            |              |
|--------------------|------------|------------|-------------|------------|--------------|------------|------------|-------------|------------|--------------|
|                    | Scholar    | Honor      | Distinction | National   | Total        | Scholar    | Honor      | Distinction | National   | Total        |
| Austin             |            |            |             |            |              | 2          | 0          | 0           | 0          | 2            |
| Bellaire           | 122        | 56         | 193         | 64         | 435          | 162        | 73         | 197         | 69         | 501          |
| Carnegie           | 59         | 13         | 31          | 9          | 112          | 70         | 24         | 45          | 9          | 148          |
| Challenge          | 5          | 2          | 0           | 0          | 7            | 10         | 2          | 0           | 0          | 12           |
| Chavez             | 5          | 0          | 0           | 0          | 5            | 10         | 0          | 0           | 0          | 10           |
| Davis              | 0          | 2          | 0           | 0          | 2            | 6          | 0          | 1           | 1          | 8            |
| DeBakey            | 54         | 34         | 64          | 18         | 170          | 48         | 41         | 84          | 24         | 197          |
| East ECC           | 3          | 0          | 0           | 0          | 3            | 5          | 1          | 0           | 0          | 6            |
| Eastwood           | 9          | 0          | 1           | 0          | 10           | 19         | 3          | 5           | 0          | 27           |
| Furr               | 0          | 1          | 0           | 0          | 1            | 1          | 0          | 0           | 0          | 1            |
| Houston Acad Int'l | 0          | 0          | 0           | 0          | 0            | 0          | 0          | 1           | 0          | 1            |
| Houston M/S/T      | 3          | 1          | 0           | 0          | 4            | 4          | 0          | 1           | 0          | 5            |
| HSLECJ             | 5          | 1          | 1           | 0          | 7            | 4          | 0          | 0           | 0          | 4            |
| HSPVA              | 26         | 5          | 14          | 2          | 47           | 35         | 7          | 10          | 2          | 54           |
| Jones              | 1          | 0          | 0           | 0          | 1            | 0          | 0          | 0           | 0          | 0            |
| Jordan             | 1          | 0          | 0           | 0          | 1            | 0          | 1          | 1           | 0          | 2            |
| Lamar              | 0          | 0          | 0           | 0          | 0            | 5          | 0          | 0           | 0          | 5            |
| Lee                | 13         | 2          | 2           | 1          | 18           | 3          | 0          | 0           | 0          | 3            |
| Madison            | 0          | 0          | 0           | 0          | 0            | 2          | 0          | 0           | 0          | 2            |
| Milby              | 19         | 3          | 1           | 0          | 23           | 16         | 0          | 1           | 0          | 17           |
| Mt. Carmel         | 0          | 1          | 0           | 0          | 1            | 0          | 0          | 1           | 0          | 1            |
| N. Houston EC      | 0          | 0          | 0           | 0          | 0            | 3          | 2          | 0           | 0          | 5            |
| Reagan             | 9          | 1          | 1           | 1          | 12           | 11         | 2          | 0           | 0          | 13           |
| Scarborough        | 4          | 0          | 0           | 0          | 4            | 1          | 0          | 0           | 0          | 1            |
| Sharpstown         | 0          | 0          | 0           | 0          | 0            | 1          | 0          | 0           | 0          | 1            |
| Sharpstown Int'l   | 1          | 1          | 0           | 0          | 2            | 2          | 1          | 0           | 0          | 3            |
| Waltrip            | 12         | 0          | 0           | 0          | 12           | 8          | 1          | 1           | 0          | 10           |
| Washington         | 6          | 1          | 1           | 0          | 8            | 4          | 0          | 0           | 0          | 4            |
| Westbury           | 5          | 1          | 2           | 0          | 8            | 12         | 1          | 1           | 0          | 14           |
| Westside           | 111        | 20         | 39          | 6          | 176          | 110        | 17         | 34          | 8          | 169          |
| Yates              | 1          | 0          | 0           | 0          | 1            | 0          | 0          | 0           | 0          | 0            |
| <b>HISD</b>        | <b>474</b> | <b>145</b> | <b>350</b>  | <b>101</b> | <b>1,070</b> | <b>555</b> | <b>176</b> | <b>383</b>  | <b>113</b> | <b>1,227</b> |

- AP Scholar: Granted to students who receive scores of 3 or higher on three or more AP exams;
- AP Scholar with Honor: Granted to students who receive an average score of at least 3.25 on all AP Exams taken, **and** scores of 3 or higher on four or more of these exams;
- AP Scholar with Distinction: Granted to students who receive an average score of at least 3.5 on all AP Exams taken, **and** scores of 3 or higher on five or more of these exams; and
- National AP Scholar: Granted to students in the United States who receive an average score of at least 4 on all AP Exams taken, **and** scores of 4 or higher on eight or more of these exams.