

Research Brief

2001 TEXAS EDUCATION AGENCY ACCOUNTABILITY SYSTEM

The Texas Education Agency (TEA) Accountability System is a method for evaluating school districts and campuses with regard to their student performance on certain “base indicators.” The ratings employed in the TEA Accountability System are:

District Accreditation Ratings

- Exemplary
- Recognized
- Academically Acceptable
- Academically Unacceptable

Campus Performance Ratings

- Exemplary
- Recognized
- Acceptable
- Low Performing

To determine a campus' or district's classification, TEA examines student attendance, dropout rates, and performance on TAAS. Each of these indicators is examined for all students as well as for each student group (African American, Hispanic, White, and Economically Disadvantaged). The twenty base indicators for the TEA Accountability System are summarized below.

Indicator	Population
Spring 2001 TAAS Passing Rates Reading Subtest 5 Indicators	All non-special education and special education students tested on English TAAS grades 3–8 and 10 and Spanish TAAS grades 3–6 enrolled as of the PEIMS Fall Enrollment date (all students and each student group)
Writing Subtest 5 Indicators	All non-special education and special education students tested on English TAAS grades 4, 8, and 10 and Spanish TAAS grade 4 enrolled as of the PEIMS Fall Enrollment date (all students and each student group)
Mathematics Subtest 5 Indicators	All non-special education and special education students tested on English TAAS grades 3–8 and 10 and Spanish grades 3–6 enrolled as of the PEIMS Fall Enrollment date (all students and each student group)
End-of-Course Examination as Substitute for Exit-Level TAAS	Any student enrolled in grade 10 as of PEIMS Fall Enrollment date who has passed 3 End-of-Course Examinations prior to the Spring grade 10 TAAS administration date will fulfill the TAAS exit-level requirement
1999–2000 Dropout Rates 5 Indicators	All students and each student group, grades 7–12; data to be obtained from PEIMS leaver record

Only student groups meeting the size requirements, are used in the accountability analysis. The size requirement for TAAS is:

- At least 30 students within a student group were tested for any subject area, and that student group comprises at least 10% of all test takers in each subject; OR, at least 50 students within the student group were tested.

With respect to Dropout Rate:

- For all students and each student group, a district or campus must have at least 10 dropouts AND at least 30 7th–12th graders in membership during the school year; AND
- For each student group, the group must comprise at least 10% of all 7th–12th graders, OR there must be at least 50 7th–12th graders within that group.

How has the TEA Accountability System changed this year as compared to last year?

Several changes were incorporated into the 2001 Accountability System. The major modifications are described here.

- Starting in 2001, school districts and campuses will be required to have a 1999–2000 dropout rate of 5.5% or less for all students and student groups in order to be rated Acceptable, as compared to the 2000 standard of 6%. Dropout standards for schools seeking the Exemplary rating will remain at their current level of 1% or less, but schools seeking the Recognized rating cannot have a 1999–2000 dropout rate higher than 3% in 2001.
- Attendance rates are no longer used to determine a school's rating; however, they will be used for additional acknowledgment.
- The TAAS performance standards for the Acceptable rating, which have been increasing steadily since 1994, will remain at the current level of 50% passing for 2001.

Summary of Significant Dates Related to the TEA Accountability System

February 20, 2001	Writing is administered to grades 4 and 8, in Spanish to grade 4.
February 20–22, 2001	Exit Math, Reading, and Writing are administered to grade 10.
April 24–25, 2001	Math and Reading are administered to grades 3–8, in Spanish to grades 3–6.
April 12, 2001	District receives preliminary TAAS exit results.
April 15, 2001	TEA releases official dropout data.
May 18, 2001	District receives TAAS results for all students grade 3–8.
June 16, 2001	District receives accountability TAAS, dropout, and 1999–2000 attendance data from TEA.
August 17, 2001	Tentatively scheduled released data of results.

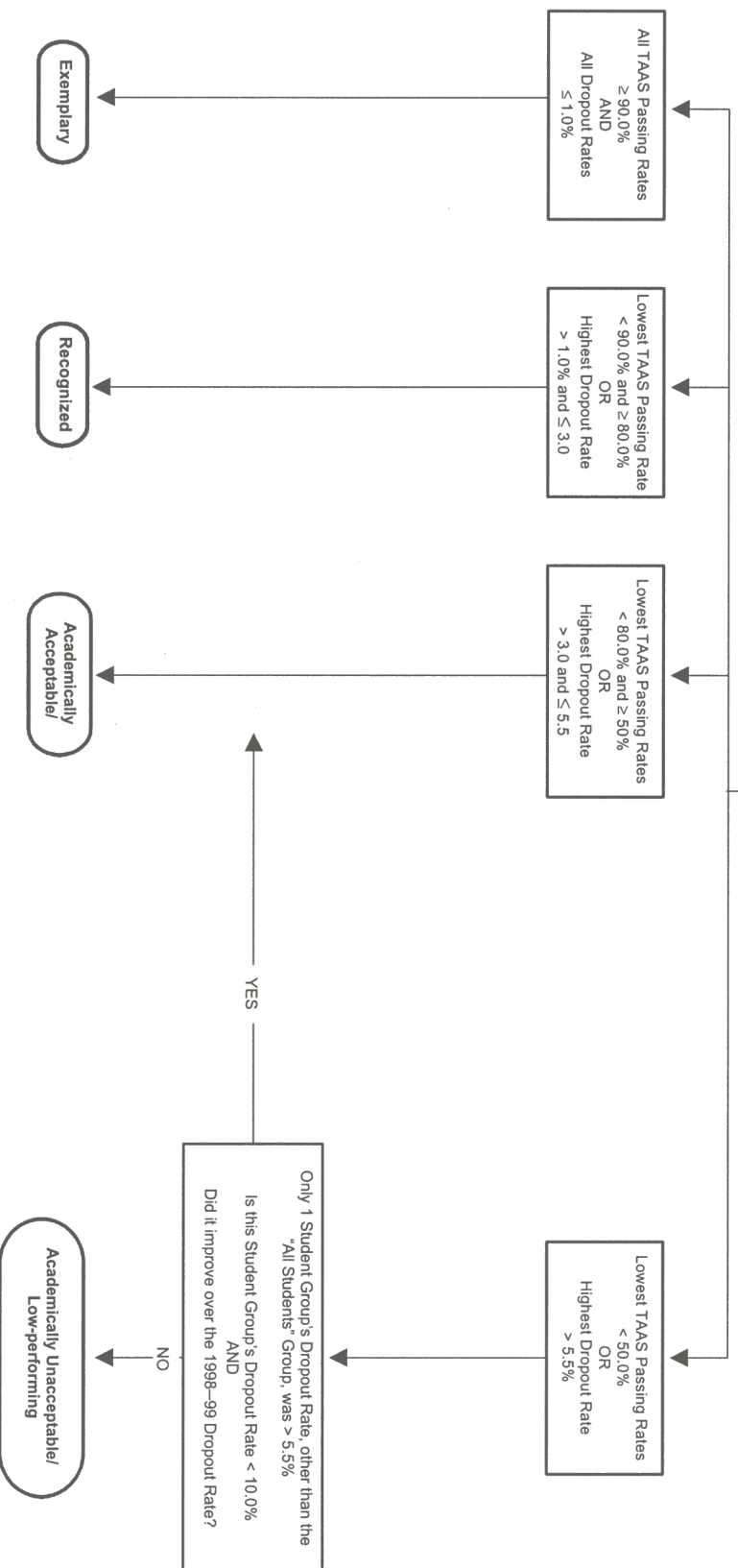
Anticipated Changes for the 2002 Accountability System

For 2002, a secondary school has to have a 2000–2001 dropout rate no higher than 5.0 % to be Acceptable and no higher than 2.5% to be Recognized.

The passing rate standards for the Acceptable rating will be raised to 55% for all students and student groups for reading, math and writing. The TAAS Social Studies passing rate will be included in the accountability system in 2002 and will require a passing rate of 50% for all students. Student group passing rates will not be considered in 2002 for Social Studies.

2001 TEA Accountability System

For the overall student population and each student group (African American, Hispanic, White, and Economically Disadvantaged), determine:
(1) Spring 2001 TAAS Passing Rates for each subtest (Reading, Writing, and Mathematics), and (2) 1999–2000 Dropout rates.
Based on a district's or campus' lowest TAAS Passing Rate or highest Dropout Rate, determine where it falls among the following four possible categories:



How are ratings assigned in the 2001 TEA Accountability System?

In general, a campus' or district's rating is determined by its lowest performance on any single criterion by any single student group. The above figure describes how ratings are assigned in the TEA Accountability System. All calculations are rounded to one decimal place.

A district can not be rated exemplary or recognized if it:

- Has one or more Low-performing campuses.
- Has 1,000 or more, or 10% or more, 1999–2000 students in grades 7–12 who were unreported on either the PEIMS enrollment record or PEIMS leaver record, or
- Is found to be out of compliance with Special Education regulations.