

2012 Bond Project Updates – September 2016

HISD Board of Education District IX

LAWSON MIDDLE SCHOOL

Budget: \$59 million

Scope of Work: New school for 1,300 to 1,500 students

Square Footage: 194,573

Target Completion Date: Phase 1 New building – 1st Quarter 2018; Phase II – Building demolition and athletic fields: 1st Quarter 2019

Contractor: Turner Construction Company

Architect: Harrison & Kornberg

- Site work began mid-July 2016, and a groundbreaking ceremony was held in August.
- Work underway on excavation for building pad and temporary detention pond.
- Installation of engineered fill and work on site utilities in progress.



The school design features a new dining commons, gym, and a central courtyard area, where students can gather to learn and study throughout the day. Plans also include a new fine arts building, which will feature a modern black box theater and spaces for instrumental and vocal arts.

MADISON HIGH SCHOOL

Budget: \$82.7 million

Scope of Work: New school incorporating recent science and classroom building renovation and accommodating 1,900 to 2,100 students

Square Footage: 265,678

Target Completion Date: 3rd Quarter 2018

Contractor: DivisionOne

Architect: ERO Architects

- Project is out for bid, with bids due in September.
- Approval of construction contract set to go before the HISD Board of Education in November.
- Once new school is occupied, old school will be demolished to make room for new parking lots and fields, which will be installed throughout the fall 2018 semester.



The school will be flanked by a three-story academic wing to the east and performing arts and community spaces to the west. The academic wing will showcase the school's Career & Technical Education programs, while academic neighborhoods are connected by a learning commons.

PARKER ELEMENTARY SCHOOL

Budget: \$29.5 million

Scope of Work: New school for 850 students

Square Footage: 110,000

Target Completion Date: 3rd Quarter 2017

Contractor: Patriot Contracting

Architect: Brave Architecture

- Storm sewer line has been installed under the bus lane. Ground work and utility installation is ongoing.
- Heavy summer rains have impacted the ground work. The contractor is working on a recovery schedule to ensure substantial completion target of August 2017 is met.



The two-story building was specifically designed to house the school's award-winning music magnet program. It will feature a 500-seat auditorium, expanded music and practice space, plenty of natural light and flexible learning spaces.

WESTBURY HIGH SCHOOL

Budget: \$40 million

Scope of Work: Partial replacement and general renovations to accommodate 2,300 to 2,500 students

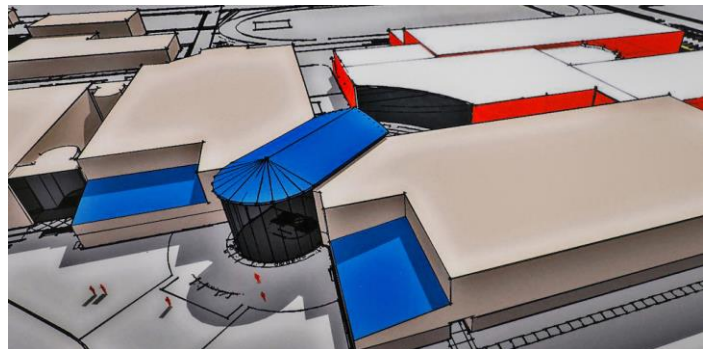
Square Footage: 400,000

Target Completion Date: 4th Quarter 2018

Contractor: Satterfield & Pontikes

Architect: Joiner Architects

- An early package for new baseball and softball fields is currently under construction and approximately 85 percent complete.
- The main campus project is currently in the contract pricing and negotiations phase.
- The main campus includes two new additions. One will house a new main entrance and administration offices for the campus. The other will house classrooms to replace existing temporary classroom buildings, two new gymnasiums with locker rooms for boys and girls athletic programs, new ROTC program area, and new dining and kitchen space, as well as some extended learning flex-use spaces.



Westbury's new design will provide a new and clearly defined main entry and central office area, additions to the building housing Boys and Girls Athletics, two new gyms to replace the existing gym, a new Weight Room, a dining and kitchen area, and new classrooms, as well as a new space for the campus ROTC program. Once portable buildings are removed, tennis courts will be constructed in their place.

WORTHING HIGH SCHOOL**Budget:** \$30.2 million**Scope of Work:** New facility incorporating new two-story classroom wing to accommodate 1,100 to 1,300 students**Square Footage:** 184,000**Target Completion Date:** Phase 1: 2nd Quarter 2016; Phase 2: 1st Quarter 2018**Contractor:** B3Ci**Architect:** Molina Walker

- Phase 1 - New Classroom Addition (Annex) is completed and open for fall 2016 classes. Closeout scheduled for final approval October 2016.
- Phase 2 – Schedule for advertisement for CSP in October 2016, with construction scheduled to start in December 2016.

The new facility will feature flexible learning centers, CTE classrooms, and new spaces for administration, student guidance, athletics, and dining. Design plans also include abundant natural light throughout and outdoor courtyards, which can be used as learning spaces

