

MEMORANDUM

April 9, 2018

TO: Board Members

FROM: Grenita Lathan
Interim Superintendent of Schools

SUBJECT: **PSAT 8/9 & PSAT/NMSQT Fall 2017**

CONTACT: Carla Stevens, 713-556-6700

This report analyzes the participation and performance of Houston Independent School District (HISD) students who took the fall 2017 administration of the Preliminary SAT for students in grades eight and nine (PSAT 8/9) and the Preliminary SAT/National Merit Scholarship Qualifying Test (PSAT/NMSQT) assessments offered by the College Board. In 2015–2016, the College Board redesigned the PSAT/NMSQT and introduced the PSAT 8/9 for the first time.

Key findings include:

- HISD participation rates on both PSAT 8/9 and PSAT/NMSQT remained the same or increased from 2015 to 2017.
- In 2017, 83 percent of HISD eighth grade students and 81 percent of ninth grade students took the PSAT 8/9.
- In 2017, 83 percent of tenth grade students and 81 percent of eleventh grade students took the PSAT/NMSQT.
- Mean math scores were higher than Evidence-Based Reading and Writing (ERW) scores on both assessments.
- Decreases were seen in the percent of students meeting College and Career Readiness (CCR) Benchmarks compared to last year, with the exception of grade 8 in mathematics where the results were comparable.
- Performance on the fall administration of the PSAT 8/9 and the PSAT/NMSQT may have been adversely impacted by Hurricane Harvey, especially since the test was administered on October 11, 2017, and the majority of students had been back to school for only four weeks.

ADMINISTRATIVE RESPONSE

College Readiness Office

While the district experienced lower participation rates and scores on the 2017 administration of the PSAT, it also recognizes that the majority of students had only returned to school four weeks since Hurricane Harvey. The impact of this natural disaster on students' and families' emotional and financial well-being cannot be understated, and this may have impacted 2017 results. In the 2017-2018 school year, the Office of College and Career Readiness has implemented a number of initiatives to increase awareness of the importance of these exams, and tools to prepare, including:

- The district pays for students to take the PSAT in grades 8 through 11, which allows students and schools to use scores over time to prepare for the PSAT/National Merit Scholarship Qualifying Test in the 11th grade. The district also pays for all juniors to take the SAT during the school day, and the department works directly with schools to coordinate high participation.
- The district launched its second annual Khan Academy "All In" campaign to increase awareness about the effectiveness of the free online SAT and PSAT preparation course to all 8th grade and high school students, teachers, and administrators. A print and digital campaign was launched, advertising the benefits of the course and a scholarship raffle for students who take advantage of the tool. Administrators were given regular updates from the district on the average number of minutes that students use Khan Academy, and campuses were provided training on how to integrate Khan Academy usage into the school day. Khan Academy uses students' previous PSAT scores to develop a personalized preparation schedule and action plan.
- The district used data to identify a trend between high usage of Khan Academy and score increases on the PSAT. The district trained a number of these successful students to be "Khan Ambassadors," sharing their success stories in a district wide print campaign and regularly promoting awareness of the benefits of strong PSAT performance on high school campuses. 2017-2018 was the second year of the ambassador program, which was expanded to serve more students.
- For the second year, all high school and 6-12 campuses were given an opportunity to participate in a contest, called the "Khanathlon," to increase the number of students that use Khan Academy to prepare for the PSAT and SAT. Early in the Spring semester, three campuses were recognized for highest linkage rates between College Board and Khan Academy accounts, followed by a mid-term and end of year contest for highest usage. Campuses with the highest rates of usage are eligible for district funding for college field trips, materials and other college and career readiness initiatives. Large, medium, and small campuses competed separately.
- The district provides students, parents and campuses with access to Naviance, which provides free standardized testing preparation for the PSAT and SAT. This tool is also used to send messages to students about upcoming testing dates, and resources to understand and prepare for the exam.
- The College Readiness Department centrally trains and supports a team of 33 College Success Advisors who work directly with students at all high schools. This team provides personalized support to students on completing college and financial aid applications, and also increases awareness of the importance of the PSAT for qualifying for scholarships. All College Access personnel in the district are provided with training on how to leverage PSAT and SAT Preparation tools.

Secondary Curriculum Office

Secondary Curriculum and Development continues to work in partnership with the College Readiness department to help high school teachers understand the new SAT format for mathematics. The new topics are more heavily focused on algebra rather than geometry. Trainings have included department chair meetings, the K-12 math conference, and Achieve 180 PD days for improvement-required campuses. SAT-type problems have been written into portions of the district curriculum. These efforts will continue and will be expanded to include middle school teachers.

Secondary English/Language Arts leaders will continue to work toward improved tier 1 instruction as outlined in district literacy initiatives. Additionally, the district will continue to support Tier II and Tier III interventions for low performing students to ensure that all students show growth.

Should you have any further questions, please contact Carla Stevens in Research and Accountability at 713-556-6700.

 GL

Attachment

cc: Superintendent's Direct Reports
Area Superintendents
School Support Officers
High School Principals
Middle School Principals
Rick Cruz
Adam Stephens



RESEARCH

Educational Program Report

PSAT 8/9 & PSAT/NMSQT FALL 2017



2018 BOARD OF EDUCATION

Rhonda Skillern-Jones

President

Jolanda Jones

First Vice President

Anne Sung

Second Vice President

Sergio Lira

Secretary

Holly Maria Flynn Vilaseca

Assistant Secretary

Wanda Adams

Diana Dávila

Susan Deigaard

Elizabeth Santos

Grenita Lathan

Interim Superintendent of Schools

Carla Stevens

Assistant Superintendent

Department of Research and Accountability

Laurie Zimmerman, Ph.D.

Victoria Mosier

Research Specialists

Zack Bigner, Ed.D.

Research Manager

Houston Independent School District

Hattie Mae White Educational Support Center

4400 West 18th Street Houston, Texas 77092-8501

www.HoustonISD.org

It is the policy of the Houston Independent School District not to discriminate on the basis of age, color, handicap or disability, ancestry, national origin, marital status, race, religion, sex, veteran status, political affiliation, sexual orientation, gender identity and/or gender expression in its educational or employment programs and activities.

PSAT 8/9 and PSAT/NMSQT Results: Fall 2017

Executive Summary

Program Description

The Preliminary SAT for students in grades eight and nine (PSAT 8/9) and the Preliminary SAT/National Merit Scholarship Qualifying Test (PSAT/NMSQT) are national examinations offered by the College Board. These assessments measure progress toward college and career readiness. In fall 2015, the College Board redesigned the PSAT/NMSQT and introduced the PSAT 8/9 for the first time. Because comparing the redesigned exam with prior versions is problematic, performance data are only included for a maximum of three years.

Highlights

- The percentage of tenth grade students tested has increased from 82 percent in 2015 to 83 percent in 2017 and for eleventh grade students from 79 percent in 2015 to 81 percent in 2017, although there was a decline in grade 11 to 78 percent in 2016.
- The percentage of eighth grade students tested increased from 81 percent in 2015 to 83 percent in 2017, and for ninth grade students percentages remained the same from 81 percent in 2015 to 81 percent in 2017, with a decline of 2 percentage points for grade 9 from 2015 to 2016.
- In 2017, PSAT 8/9 and PSAT/NMSQT total scores and scores by subject and grade level declined for the district, state, and nation compared to 2016, with the exception of grade 11 Evidenced-Based Reading and Writing (ERW) mean scores at the state level which stayed the same.
- Average PSAT 8/9 and PSAT/NMSQT scores and scores by subject and grade level districtwide are lower than those of students in Texas and the nation.
- HISD eighth grade students belonging to the African American, Asian, White, and Two or more races groups scored higher on average compared to their counterparts across the state, and students belonging to the Asian, Hispanic, White, and Two or more races groups also scored higher on average than their counterparts across the nation.
- On the 2017 PSAT 8/9 and the PSAT/NMSQT total score, HISD White students scored higher on average than their counterparts across the state and the nation.
- Twenty-seven percent and twenty-four percent of HISD eighth and ninth grade students tested, respectively, on the PSAT 8/9 met both the math and ERW College and Career Readiness (CCR) benchmarks, which is lower than the state (31 percent and 32 percent) and nation (32 percent and 36 percent).
- Twenty-two percent and twenty-three percent of HISD tenth and eleventh grade students, respectively, tested on the PSAT/NMSQT met both the math and ERW CCR benchmarks, which is lower than the state (32 percent and 33 percent) and the nation (38 percent and 44 percent).

Introduction

The SAT Suite of Assessments is an integrated system of tests that includes the SAT® (for students in grades 11 and 12), the Preliminary SAT/National Merit Scholarship Qualifying Test (PSAT/NMSQT®) and the PSAT™ 10 (for grades 10 and 11), and the PSAT™ 8/9 (for grades 8 and 9). The tests measure the same skills and knowledge in grade-appropriate ways. The PSAT 8/9 establishes a baseline measurement of college and career readiness as students enter high school. The PSAT/NMSQT measure the skills and knowledge that research shows are the most essential for college and career readiness and success, and can qualify eligible students for scholarships through partnership with the National Merit Scholarship Corporation.

There are two section scores, Evidenced-Based Reading and Writing (ERW) and Math. The ERW Section Score is comprised of the Reading Test Score and the Writing and Language Test Score. The Math Section Score is comprised of the Math Test Score. The Reading Test measures comprehension and reasoning skills and focuses on close reading of passages in a wide array of subject areas. The Writing and Language Test measures a range of skills including command of evidence, expression of ideas, and the use of Standard English conventions in grammar and punctuation. The Math Test covers a range of math practices, with an emphasis on problem solving, modeling, using tools strategically, and using algebraic structure. Each section score of the PSAT 8/9 ranges from 120 to 720, with the total score ranging from 240 to 1440. For the PSAT/NMSQT, each section score ranges from 160 to 760, with the total score ranging from 320 to 1520.

The score report includes an indicator for each section, ERW and Mathematics, which shows whether a student's score meets the grade-level benchmark. These benchmarks allow students and educators to understand how students are progressing toward college readiness. This report analyzes the participation and performance of Houston Independent School District (HISD) students who took the fall 2017 administration of the PSAT 8/9 and the PSAT/NMSQT.

In 2015–2016, the College Board redesigned the PSAT/NMSQT and introduced the PSAT 8/9 for the first time. The goal of the redesign of the suite of assessments is to reflect what is taught in the classroom and assess skills that are the most accurate predictors of college and career readiness and success based on established research and evidence. Because comparing the redesigned exam with prior versions is problematic, performance data are only included for a maximum of three years. This report includes students' latest (i.e., most recent) test score, not necessarily their highest score.

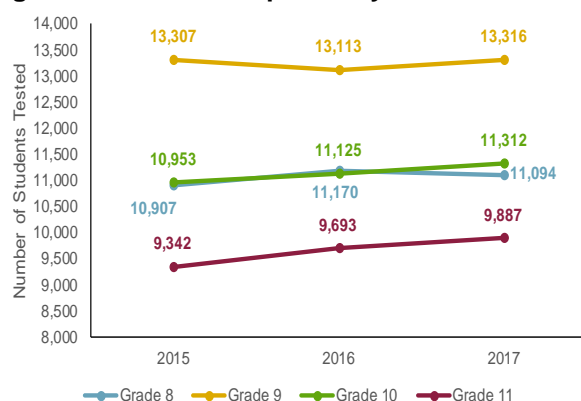
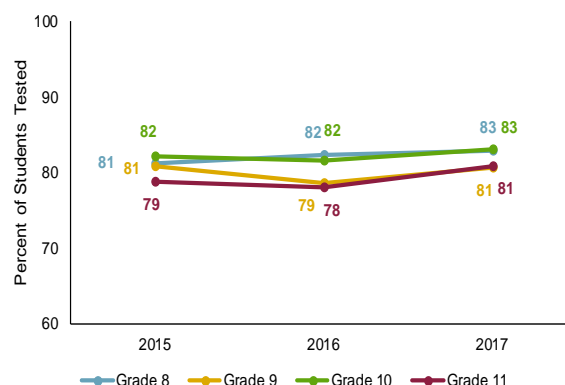
Results

PSAT 8/9 and PSAT/NMSQT Participation

HISD launched the PSAT for All initiative in 2003 as a way to enroll more students in Advanced Placement courses and prepare them to be successful on the SAT which is required by most colleges. The district-wide initiative enables all HISD tenth graders to take the PSAT/NMSQT for free. On August 12, 2010, the HISD Board of Education expanded the PSAT for All program to include incoming ninth-graders for the 2010–2011 school year. Currently, the district pays for the students to take the PSAT in grades 8 through 10. **Figure 1** and **Figure 2** (p. 3) illustrate district-wide PSAT participation.

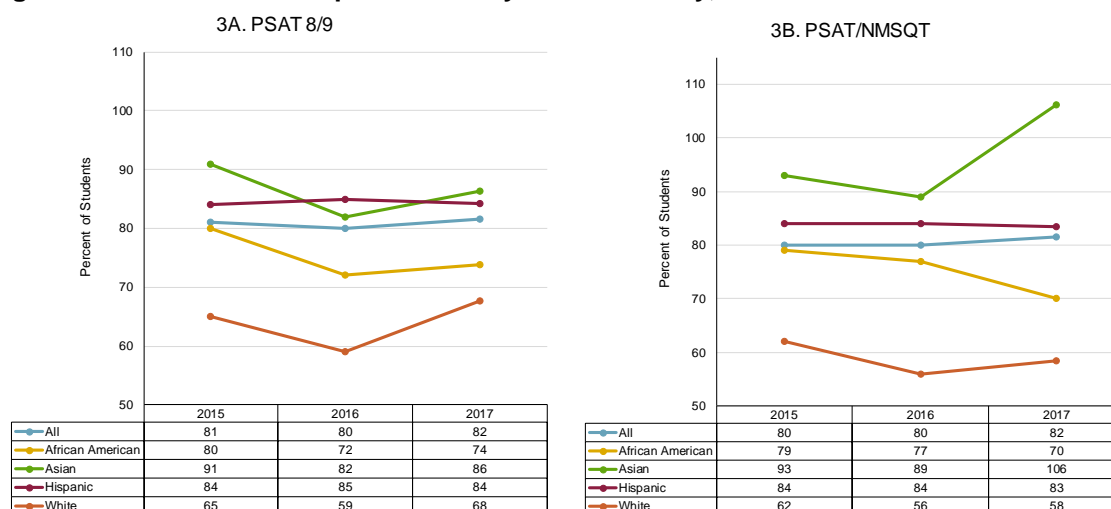
- The number of tenth and eleventh grade students taking the PSAT/NMSQT increased from 10,953 in 2015 to 11,312 in 2017 and 9,342 in 2015 to 9,887 in 2017, respectively (Figure 1, p. 3).

- The percentage of tenth and eleventh grade students tested has increased from 82 percent in 2015 to 83 percent in 2017 and from 79 percent in 2015 to 81 percent in 2017, respectively, although there was a decline in grade 11 to 78 percent in 2016 (Figure 2, p.3).
- The percentage of eighth and ninth grade students tested increased from 81 percent in 2015 to 83 percent in 2017, and from 79 percent in 2016 to 81 percent in 2017, respectively, with a decline of 2 percentage points for grade 9 from 2015 to 2016.

Figure 1. PSAT Participation by Grade**Figure 2. PSAT Participation Rate by Grade**

Sources: Figure 1, Fall 2017 College Board PSAT 8/9 Summary Report, 3/26/18; *HISD PSAT 8/9 & PSAT/NMSQT Fall 2016 Report*; Figure 2, District and School Profiles, 2015–2016 to 2016–2017; Fall PEIMS Snapshot, 2017, Chancery Demographic Extract, 10/17/17; Fall 2017 College Board Summary Report, 3/26/18

Figures 3A and 3B show the HISD PSAT participation rate by student group. Participation rates for each group were determined by dividing the number of students within the group who took the PSAT by the number of enrolled students within the group.

Figure 3A–3B. PSAT Participation Rate by Race/Ethnicity, 2015–2017

Sources: Fall 2017 College Board PSAT 8/9 Scores by Demographics-8th grade and 9th grade; Fall 2017 College Board PSAT/NMSQT Scores by Demographics-10th grade and 11th grade; PEIMS, 2015–2017

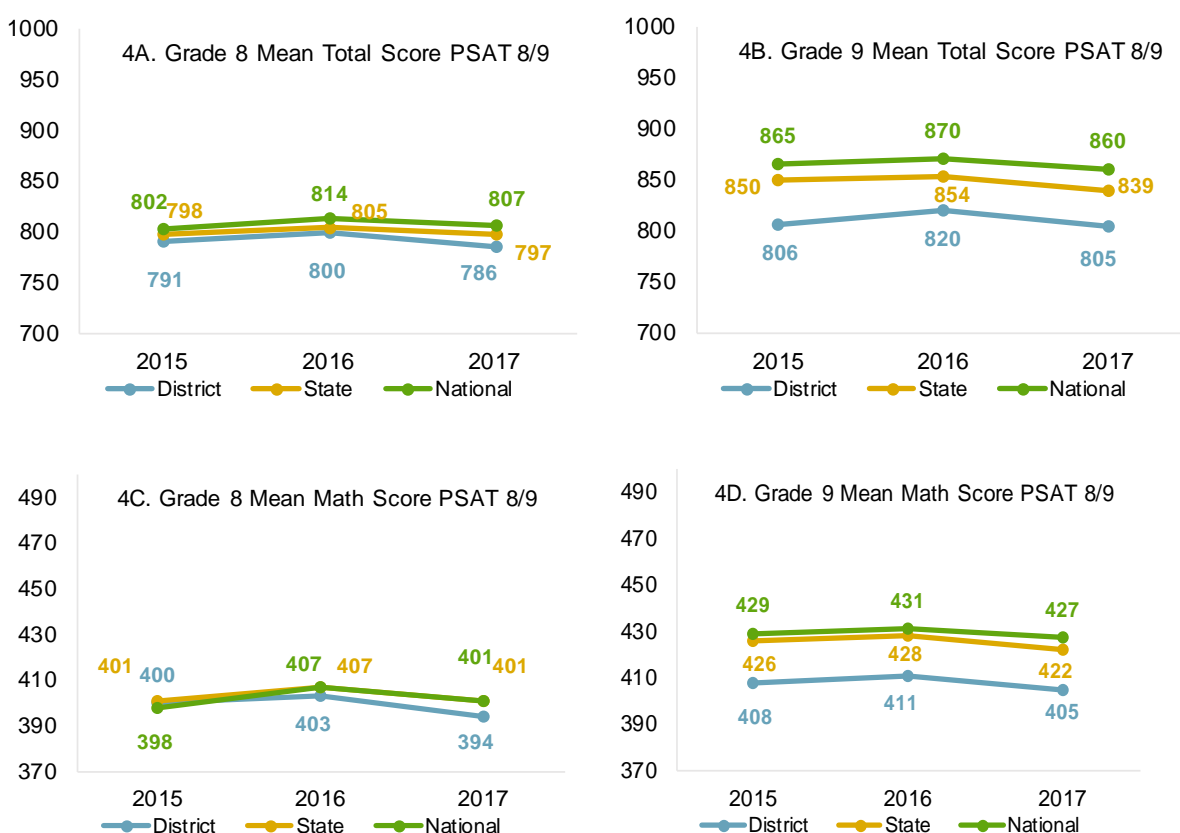
Note: Because demographic data are self-reported, percentages may exceed 100 percent.

- For the PSAT 8/9, the participation rate **dropped** from 2015 to 2016 for all race/ethnicity groups shown except for the Hispanic group which **increased**, while participation for all students, African American, Asian, and White students increased from 2016 to 2017.
- For the PSAT/NMSQT, the participation rate **dropped** from 2015 to 2016 for all race/ethnicity groups shown except for all students and Hispanic students which **remained the same**, while participation for all students, Asian students, and White students **increased** from 2016 to 2017, but **dropped** for African American and Hispanic students.

PSAT Performance

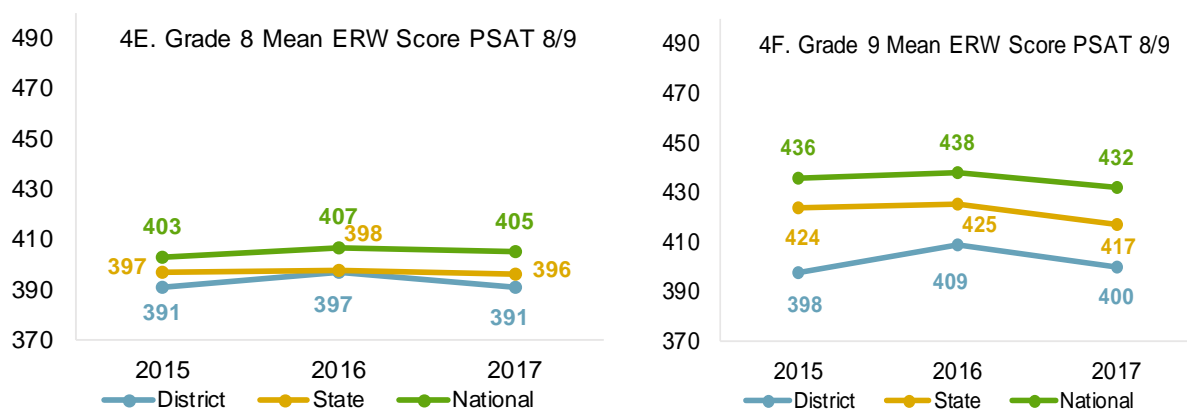
Figures 4A–4F show the average score by subject, grade level, and PSAT total score for 2015 to 2017 on the PSAT 8/9 comparing district, state, and national results.

Figures 4A–4D. Mean PSAT 8/9 Scores of District, State, and National Students, 2015–2017



Sources: PSAT 8/9 2017 Fall Scores by Institution; PSAT 8/9 2016 Fall Scores by Institution; PSAT 8/9 2015 Fall Scores by Institution

Note: ERW=Evidence-based reading and writing

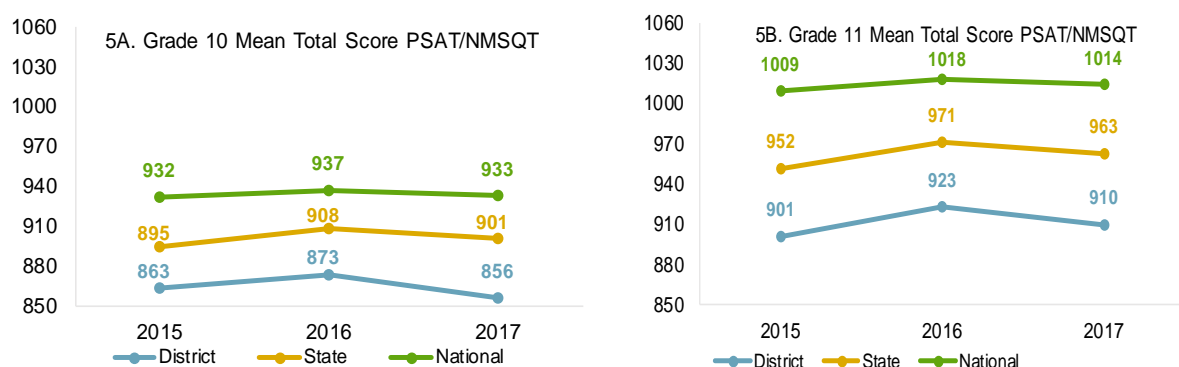
Figures 4E–4F. Mean PSAT 8/9 Scores of District, State, and National Students, 2015–2017

Sources: PSAT 8/9 2017 Fall Scores by Institution; PSAT 8/9 2016 Fall Scores by Institution; PSAT 8/9 2015 Fall Scores by Institution

Note: ERW=Evidence-based reading and writing

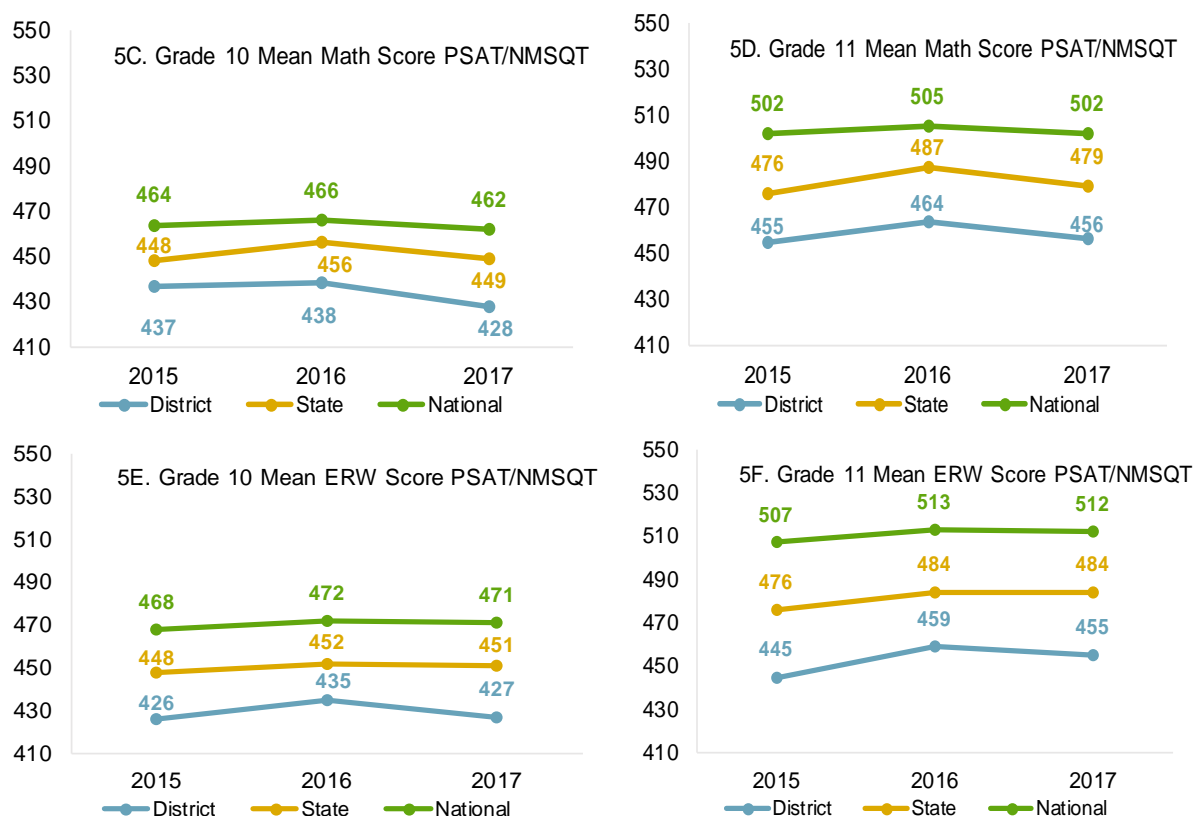
- Average PSAT 8/9 total scores and scores by subject and grade level districtwide are lower than those of students in Texas and the nation (Figures 4A–4D, p. 4 and 4E–4F).
- Although the average PSAT 8/9 total scores and subject scores dropped from 2016 to 2017, the 15-point drop in the average PSAT 8/9 total scores and the 6-point drop in the average PSAT 8/9 mathematics scores for ninth grade students was mirrored by the state (Figure 4B, p. 4 and Figure 4D, p. 4).
- 2017 PSAT 8/9 total scores for ninth grade students showed less of a decline for the district than the state or nation compared to 2015. The same is true for grade 9 math and grade 8 ERW compared to the state, and grade 9 ERW compared to both the state and nation (Figures 4A–4F, pp. 4–5).

Figures 5A–5F show the average score by subject, grade level, and PSAT/NMSQT total score for 2015 to 2017 comparing district, state, and national results.

Figures 5A–5B. Mean PSAT/NMSQT Scores of District, State, and National Students, 2015–2017

Sources: PSAT/NMSQT 2017 Fall Scores by Institution; PSAT 8/9 & PSAT/NMSQT Reports, Fall 2015 and 2016

Note: ERW=Evidence-based reading and writing

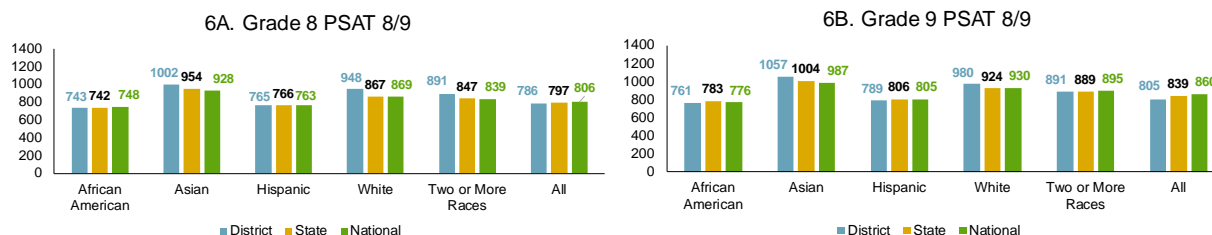
Figures 5C–5F. Mean PSAT/NMSQT Scores of District, State, and National Students, 2015–2017

Sources: PSAT/NMSQT 2017 Fall Scores by Institution; *PSAT 8/9 & PSAT/NMSQT Reports, Fall 2015 and 2016*

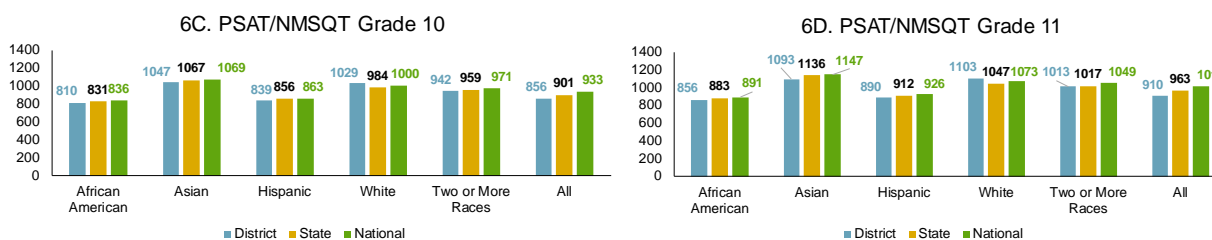
Note: ERW=Evidence-based reading and writing

- Average PSAT/NMSQT total scores and scores by subject and grade level districtwide are lower than those of students in Texas and the nation (Figures 5A–5F, pp. 5–6).
- In 2017, PSAT/NMSQT total scores and scores by subject and grade level declined for the district, state, and nation compared to 2016, with the exception of grade 11 ERW mean scores at the state level which stayed the same (Figures 5A–5F, pp. 5–6).
- Gaps in performance between the district and the nation narrowed in 2017 compared to 2015 for the total and both subject tests in grade 11 and between the district and the state for grade 11 ERW (Figures 5A–5F, pp. 5–6).

Figures 6A–6D. Average PSAT 8/9 and PSAT/NMSQT Total Score by Race/Ethnicity of District, State, and National Students, 2017



Sources: PSAT 8/9 2017 Fall Scores by Institution, 8th grade, filtered by Race/Ethnicity; PSAT 8/9 2017 Fall Scores by Institution, 9th grade, filtered by Race/Ethnicity

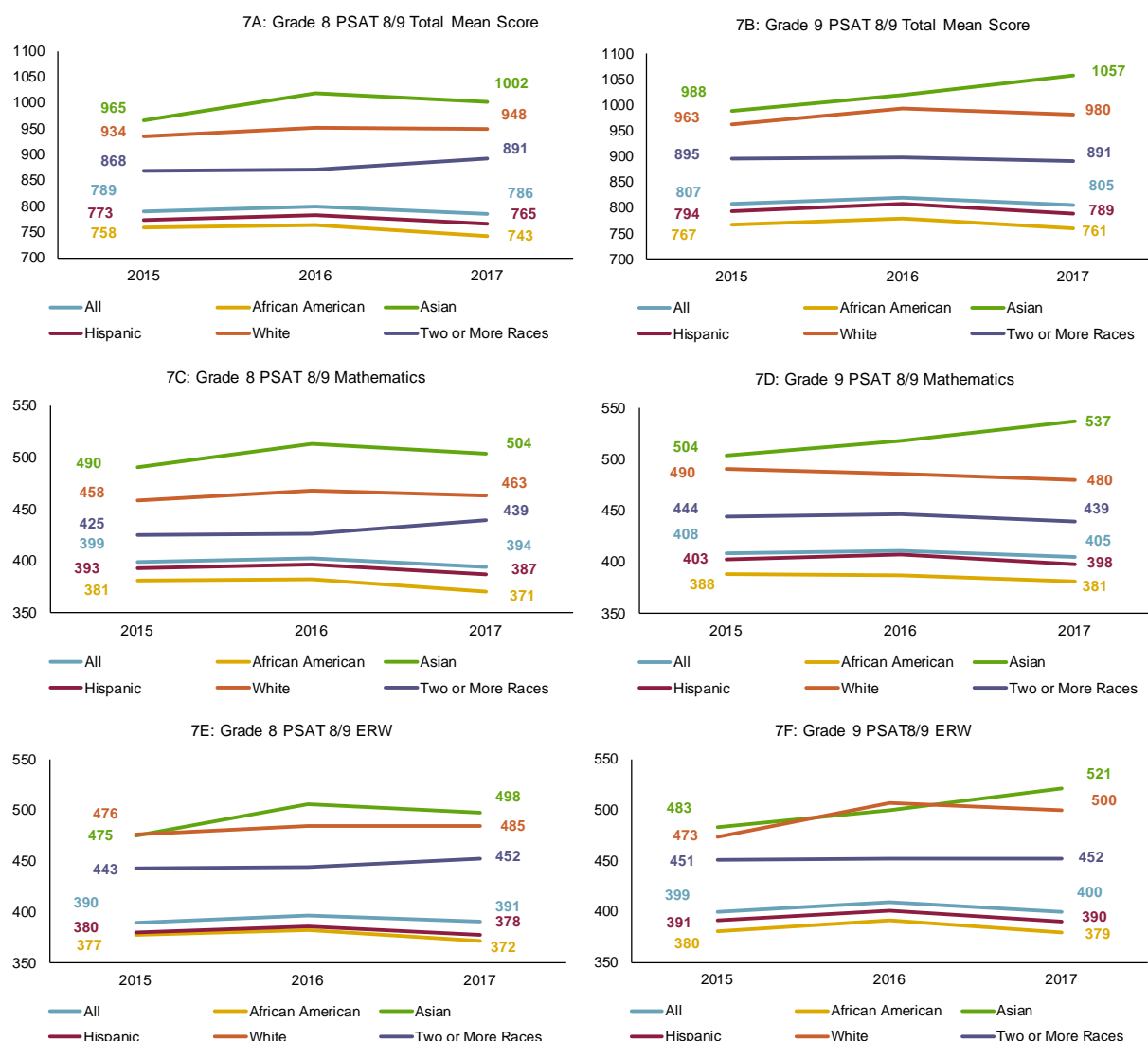


Sources: PSAT/NMSQT 2017 Fall Scores by Institution, 10th grade, filtered by Race/Ethnicity; PSAT/NMSQT 2017 Fall Scores by Institution, 11th grade, filtered by Race/Ethnicity

- HISD eighth grade students belonging to the African American, Asian, White, and Two or more races groups scored **higher** on average than their counterparts across the state, while the Asian, Hispanic, White, and Two or more races groups scored **higher** on average than their counterparts across the nation (Figure 6A).
- HISD ninth grade students belonging to the Asian, White, and Two or more races groups scored **higher** on average than their counterparts across the state, while students belonging to the Asian and White groups scored **higher** on average than their counterparts across the nation (Figure 6B).
- HISD White students at all grade levels scored higher on average than their counterparts across the state and the nation (Figures 6A–6C).

Figures 7A–7F show the average PSAT 8/9 scores by subject, grade level, and student group for the district from 2015 to 2017.

- For eighth and ninth grade students tested on the PSAT 8/9, Asian and White students scored higher on average in both ERW and math and on the total mean score compared to African American and Hispanic students for 2015, 2016, and 2017 (Figure 7A–7F, p. 8).
- From 2015 to 2017, total mean scores and math scores increased for eighth grade students identified as Asian, White, and Two or more races, and ERW scores increased for both eighth and ninth grade students identified as Asian, White, Two or more races, and all students, respectively (Figures 7A, 7C, 7E, and 7F, p. 8).

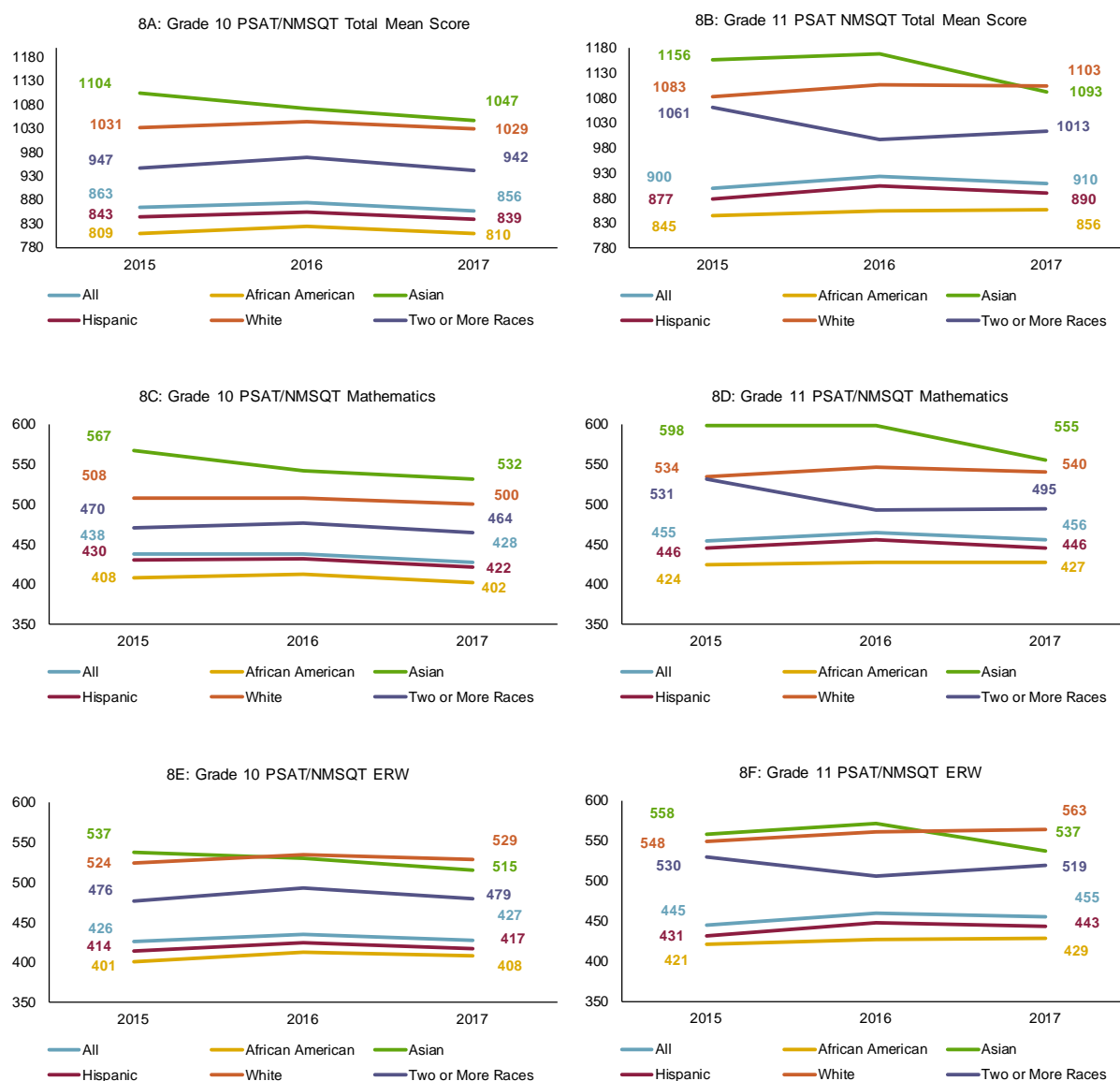
Figure 7A–7F. Average PSAT 8/9 Scores by Subject, Grade, and Race/Ethnicity, 2015–2017

Sources: PSAT 8/9 2017 Fall Scores by Institution, 8th grade, filtered by Race/Ethnicity; PSAT 8/9 2017 Fall Scores by Institution, 9th grade, filtered by Race/Ethnicity; PSAT 8/9 2016 Fall Scores by Institution, 8th grade, filtered by Race/Ethnicity; PSAT 8/9 2016 Fall Scores by Institution, 9th grade, filtered by Race/Ethnicity; PSAT 8/9 2015 Fall Scores by Institution, 8th grade, filtered by Race/Ethnicity; PSAT 8/9 2015 Fall Scores by Institution, 9th grade, filtered by Race/Ethnicity

Note: ERW=Evidence-based reading and writing

- From 2015 to 2017, total mean scores increased for ninth grade students identified as Asian and White, and math scores increased for ninth grade students identified as Asian (Figure 7B and 7D).

Figures 8A–8F show the average PSAT/NMSQT scores by subject, grade level, and student group for the district from 2015 to 2017.

Figure 8A–8F. Average PSAT/NMSQT Scores by Subject, Grade, and Race/Ethnicity, 2015–2017

Sources: PSAT/NMSQT 2017 Fall Scores by Institution, 11th grade, filtered by Race/Ethnicity; PSAT/NMSQT 2017 Fall Scores by Institution, 10th grade, filtered by Race/Ethnicity; PSAT/NMSQT 2016 Fall Scores by Institution, 11th grade, filtered by Race/Ethnicity; PSAT/NMSQT 2016 Fall Scores by Institution, 10th grade, filtered by Race/Ethnicity; PSAT/NMSQT 2015 Fall Scores by Institution, 11th grade, filtered by Race/Ethnicity; PSAT/NMSQT 2015 Fall Scores by Institution, 10th grade, filtered by Race/Ethnicity

Note: ERW=Evidence-based reading and writing

- For tenth and eleventh grade students tested on the PSAT/NMSQT, Asian and White students scored higher on average in both ERW and math and on the total mean score compared to African American and Hispanic students for 2015, 2016, and 2017 (Figure 8A–8F).
- From 2015 to 2017, total mean scores increased for tenth grade African American students, and ERW scores increased for tenth grade African American, Hispanic, White, and Two or more races (Figures 8A and 8E).

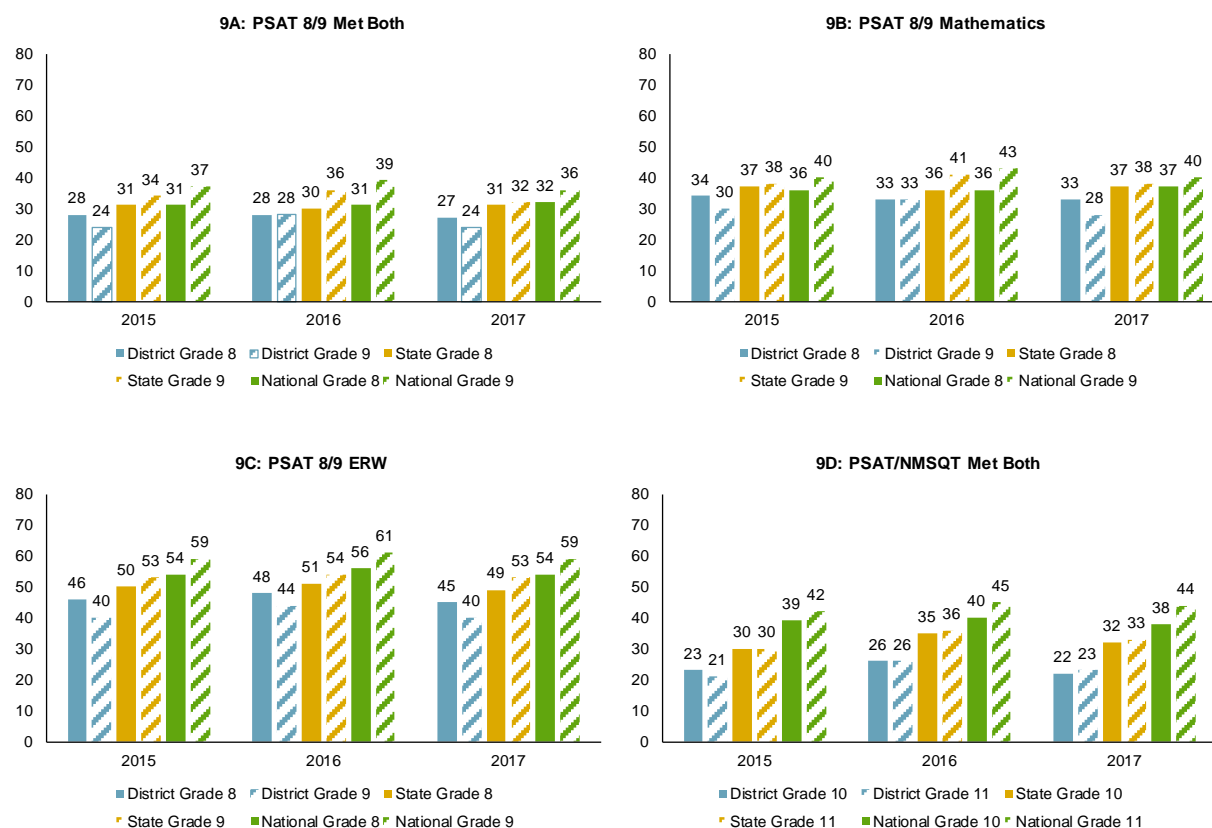
- From 2015 to 2017, total mean scores increased for eleventh grade students identified as African American, Hispanic, White, and all students; math scores increased for eleventh grade students identified as White, African American, and all students; and ERW scores increased for eleventh grade students identified as African American, Hispanic, and White (Figures 8B, 8D, 8F, pp. 9).

PSAT College and Career Readiness (CCR) Benchmarks.

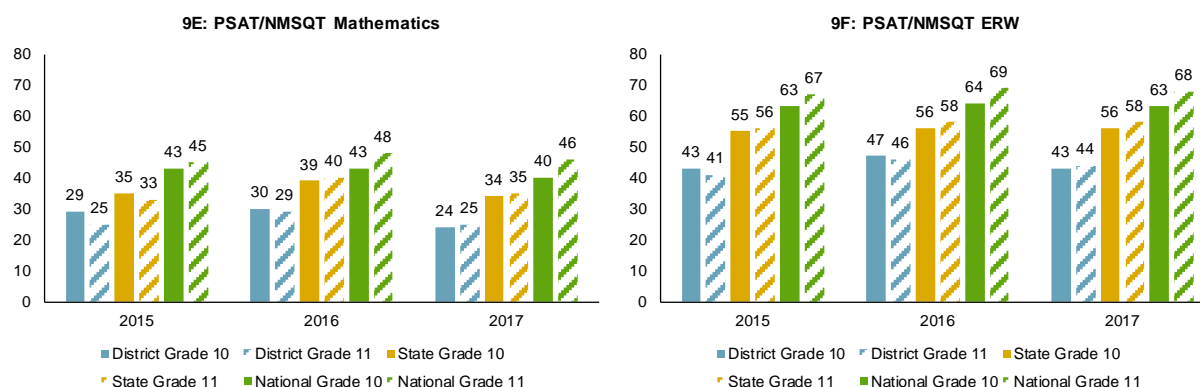
The College Board sets benchmark scores to predict students' chance of success in college and career readiness. According to the College Board, the SAT Math benchmark is associated with a 75 percent chance of earning at least a C in first-semester, college-level courses in algebra, statistics, precalculus, or calculus. The SAT ERW benchmark is associated with a 75 percent chance of earning at least a C in first-semester, college-level courses in history, literature, social science, or writing. Score reports for the PSAT/NMSQT and PSAT 8/9 include grade-level benchmarks based on how students grow from year to year toward the SAT benchmarks.

Figures 9A-9F show the percentage of students from the district, state, and nation who met college and career readiness (CCR) benchmarks in ERW, math, and both on the PSAT 8/9 and the PSAT/NMSQT.

Figure 9A–9D. Percentage of District, State, and National Students Meeting CCR Benchmarks, 2015–2017



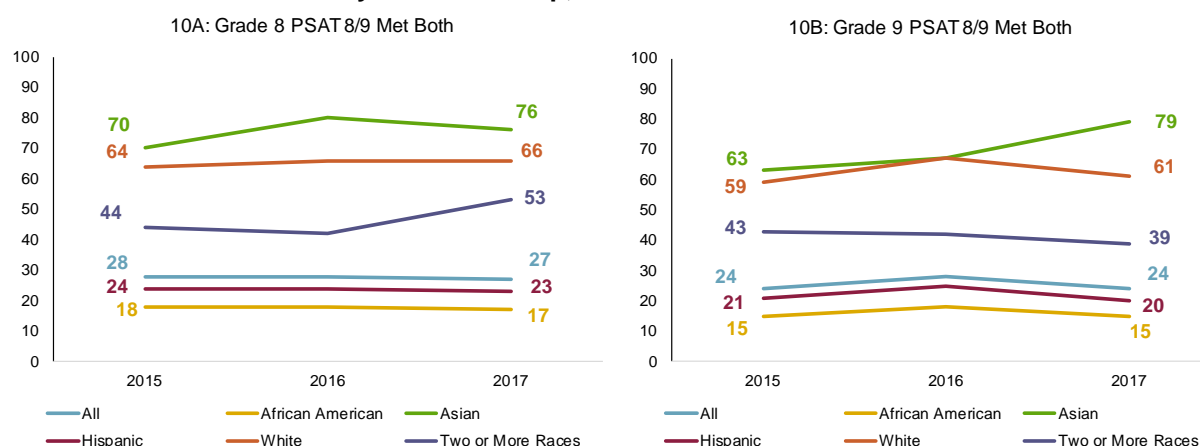
Sources: PSAT/NMSQT 2017 Fall Scores by Institution, 11th grade; PSAT/NMSQT 2017 Fall Scores by Institution, 10th grade; PSAT/NMSQT 2016 Fall Scores by Institution, 11th grade; PSAT/NMSQT 2016 Fall Scores by Institution, 10th grade; PSAT/NMSQT 2015 Fall Scores by Institution, 11th grade; PSAT/NMSQT 2015 Fall Scores by Institution, 10th grade; Note: ERW=Evidence-based reading and writing

Figure 9E–9F. Percentage of District, State, and National Students Meeting CCR Benchmarks, 2015–2017

Sources: PSAT/NMSQT 2017 Fall Scores by Institution, 11th grade; PSAT/NMSQT 2017 Fall Scores by Institution, 10th grade; PSAT/NMSQT 2016 Fall Scores by Institution, 11th grade; PSAT/NMSQT 2016 Fall Scores by Institution, 10th grade; PSAT/NMSQT 2015 Fall Scores by Institution, 11th grade; PSAT/NMSQT 2015 Fall Scores by Institution, 10th grade; Note: ERW=Evidence-based reading and writing

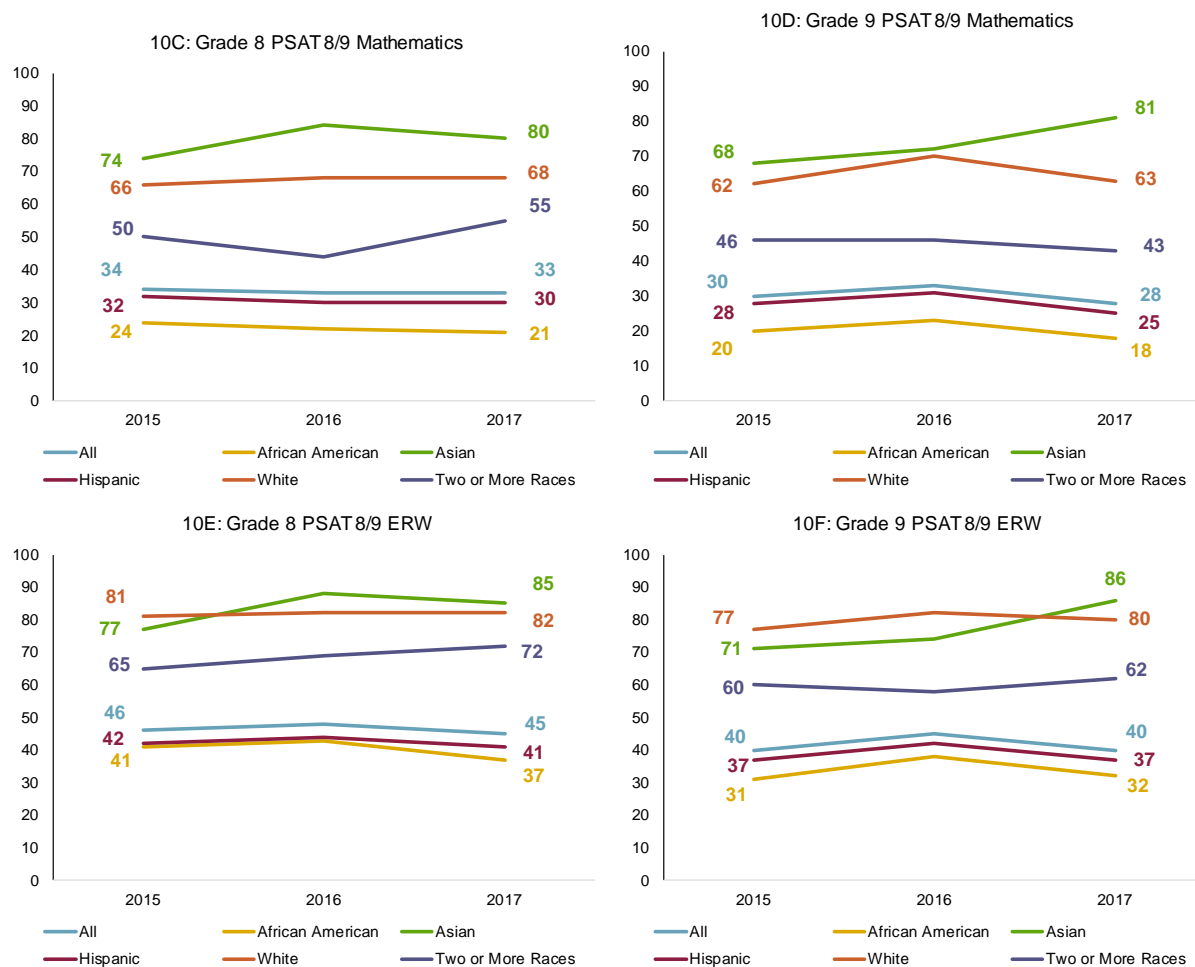
- A higher percentage of HISD eighth grade students taking the PSAT 8/9 met the CCR benchmark in ERW (45 percent) compared to math (33 percent) in 2017. A similar trend is evident for grades 9–11 and for both the state and the nation (Figures 9B, 9C, 9E, and 9F, pp. 10–11).
- Although a lower percentage of HISD students met both CCR Benchmarks on the PSAT 8/9 and the PSAT/NMSQT by grade level compared to Texas and the nation from 2015 to 2017, district ninth grade students narrowed the gap between the district and the state and the nation (Figures 9A and 9D, p. 10).

Figures 10A–10F show the percentage of eighth and ninth grade students who met the CCR benchmarks on the PSAT 8/9 by subject and student group from 2015 to 2017.

Figure 10A–10B. Percentage of 8th and 9th Grade Students Meeting CCR Benchmarks on PSAT 8/9 by Student Group, 2015–2017

Sources: PSAT 8/9 2017 Fall Benchmarks by Demographics, 8th grade; PSAT 8/9 2017 Fall Benchmarks by Demographics, 9th grade; PSAT 8/9 2016 Fall Benchmarks by Demographics, 8th grade; PSAT 8/9 2016 Fall Benchmarks by Demographics, 9th grade; PSAT 8/9 2015 Fall Benchmarks by Demographics, 8th grade; PSAT 8/9 2015 Fall Benchmarks by Demographics, 9th grade

Figure 10C–10F. Percentage of 8th and 9th Grade Students Meeting CCR Benchmarks on PSAT 8/9 by Student Group, 2015–2017



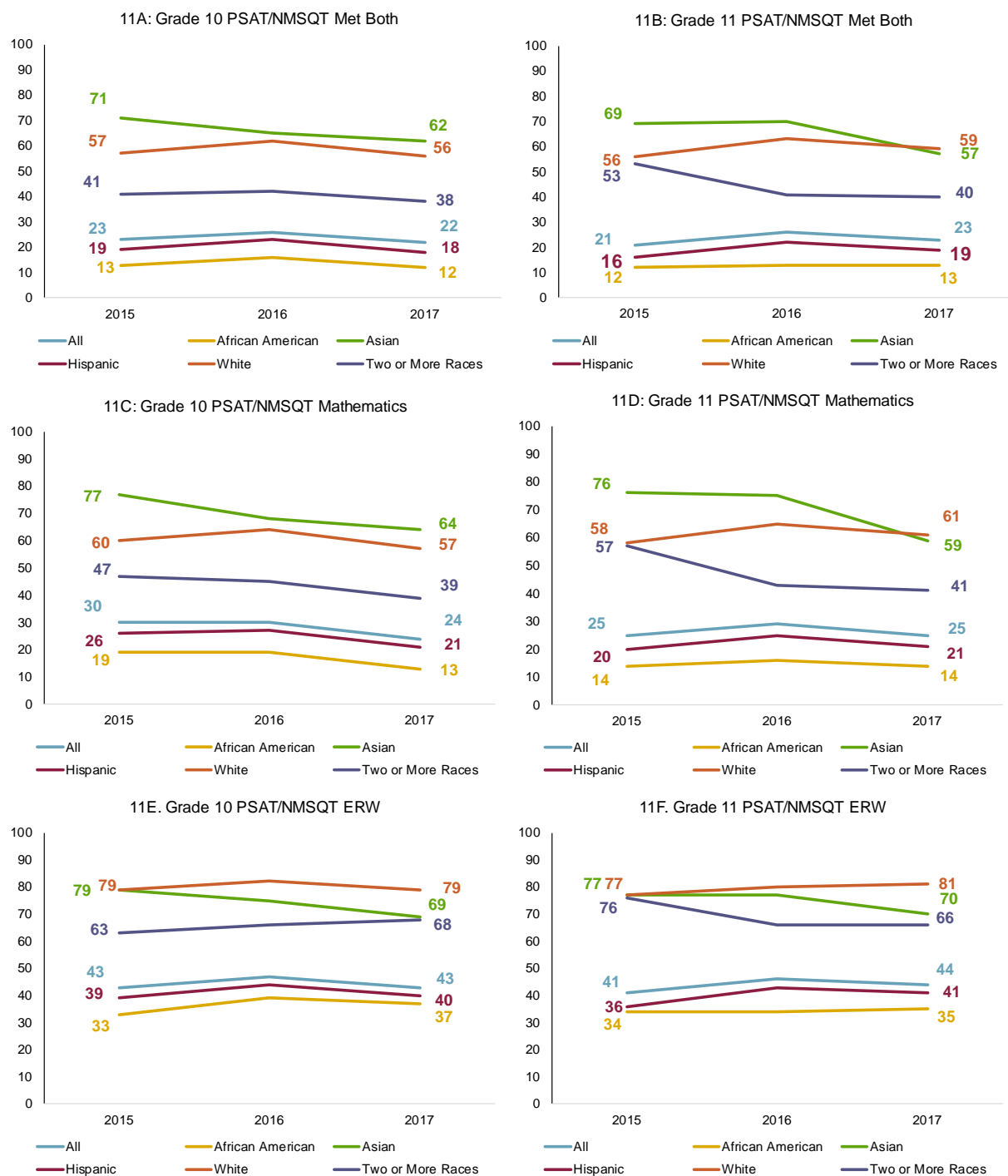
Sources: PSAT 8/9 2017 Fall Benchmarks by Demographics, 8th grade; PSAT 8/9 2017 Fall Benchmarks by Demographics, 9th grade; PSAT 8/9 2016 Fall Benchmarks by Demographics, 8th grade; PSAT 8/9 2016 Fall Benchmarks by Demographics, 9th grade; PSAT 8/9 2015 Fall Benchmarks by Demographics, 8th grade; PSAT 8/9 2015 Fall Benchmarks by Demographics, 9th grade

Note: ERW=Evidence-based reading and writing

- HISD eighth and ninth grade students belonging to the Asian and White groups had a higher percentage of students meeting the CCR benchmarks in both ERW and math compared to African American, Hispanic, or Two or more races groups (Figures 10C–10D and 10E–10F).
- The percentage of eighth grade students meeting all CCR benchmarks in 2017 increased compared to 2015 for eighth grade students belonging to Asian, White, or Two or more races (Figures 10 A, p. 11, 10C, and 10 E).
- From 2015 to 2017, the percentage of ninth grade Asian and White students meeting both CCR and math benchmarks increased, and the percentage of ninth grade students meeting ERW benchmarks for African American, Asian, White, and Two or more races increased (Figures 10B, p. 11, 10D, and 10F).

Figures 11A–11F show the percentage of tenth and eleventh grade students who met the CCR benchmarks on the PSAT/NMSQT by subject and student group from 2015 to 2017.

Figure 11A–11F. Percentage of 10th and 11th Grade Students Meeting CCR Benchmarks on PSAT/NMSQT by Student Group, 2015–2017



Sources: PSAT/NMSQT 2017 Fall Benchmarks by Demographics, 10th grade; PSAT/NMSQT 2017 Fall Benchmarks by Demographics, 11th grade; PSAT/NMSQT 2016 Fall Benchmarks by Demographics, 10th grade; PSAT/NMSQT 2016 Fall Benchmarks by Demographics, 11th grade; PSAT/NMSQT 2015 Fall Benchmarks by Demographics, 10th grade; PSAT/NMSQT 2015 Fall Benchmarks by Demographics, 11th grade

Note: ERW=Evidence-based reading and writing

- HISD tenth and eleventh grade students belonging to the Asian and White groups had a higher percentage of students meeting the CCR benchmarks in both ERW and math compared to African American, Hispanic, or Two or more races groups (Figures 11C–11F, p. 13).
- HISD tenth grade students belonging to the African American, Hispanic, or Two or more races groups had a higher percentage of students meeting the ERW benchmarks in 2017 compared to 2015 (Figure 11E, p. 13).
- The percentage of eleventh students belonging to the African American, White, or Hispanic groups meeting both CCR benchmarks and ERW benchmarks in 2017 increased compared to 2015, and the percentage of eleventh grade students belonging to the Hispanic and White groups meeting math CCR benchmarks in 2017 increased compared to 2015 (Figures 11B, 11D, and 11F, p. 13).

Results by Campus

Table 1A (p. 15) shows the number of eighth grade students tested, average PSAT 8/9 total score, and percentage of students meeting both the ERW and math CCR benchmarks by campus.

- Pershing, Hamilton, and Tanglewood middle schools had the greatest increases in the number of eighth grade students taking the PSAT, with increases of 51, 56, and 40 students, respectively. Campuses were required to test each year to be included in this analysis (Table 1A, p. 15).
- T.H. Rogers Middle School had the highest average total score at 1082 as well as the highest percentage of eighth grade students who met both the ERW and math CCR benchmarks at 96.6 percent (Table 1A).
- Wilson Montessori had the greatest increases in total score and percentage of students meeting both CCR benchmarks at 35 points and 19.1 percentage points, respectively (Table 1A).

Table 1A. PSAT 8/9 Grade 8 Mean Total Scores and Percent Met CCR Benchmarks by Campus, 2016 and 2017 (Sorted by 2017 Mean Total Score)

Campus	Number Tested			Change	Mean Total Score			Change	Percent Met Both CCR Benchmarks			Change
	2016	2017			2016	2017			2016	2017		
T H Rogers	131	147		16	1122	1082		-40	96.9	96.6		-0.3
Pin Oak MS	387	392		5	970	992		22	69.3	77.3		8.0
Lanier MS	470	476		6	992	961		-31	73.2	72.3		-0.9
Briarwood MS	45	45		0	959	936		-23	82.2	73.3		-8.9
Wilson Montessori	23	26		3	880	915		35	34.8	53.8		19.1
Project Chrysalis MS	93	83		-10	919	891		-28	66.7	57.8		-8.8
Baylor College MS	199	203		4	912	882		-30	53.8	48.3		-5.5
Garden Oaks	33	37		4	869	868		-1	42.4	40.5		-1.9
Westbriar MS	318	341		23	837	845		8	34.9	40.5		5.6
Pershing MS	487	538		51	861	843		-18	41.1	37.2		-3.9
The Rice School	150	156		6	866	837		-29	50.0	44.9		-5.1
Black MS	292	308		16	810	833		23	28.1	39.0		10.9
Meyerland MS	575	523		-52	831	830		-1	32.9	38.4		5.6
Young Women's College Prep	110	130		20	857	828		-29	31.8	29.2		-2.6
Wharton K-8 Dual Language	18	24		6	1005	818		-187	88.9	29.2		-59.7
Hamilton MS	384	440		56	797	816		19	25.8	34.3		8.5
The Rusk School	55	52		-3	890	810		-80	54.5	32.7		-21.9
Stevenson MS	421	410		-11	814	805		-9	34.4	35.1		0.7
Burbank MS	423	447		24	838	800		-38	40.9	33.3		-7.6
Hogg MS	223	227		4	794	795		1	27.8	26.9		-0.9
Tanglewood MS	200	240		40	820	791		-29	33.0	25.4		-7.6
Mickey Leland College Prep	98	88		-10	858	789		-69	44.9	21.6		-23.3
Sharpstown International	161	171		10	834	788		-46	37.3	25.7		-11.5
E-STEM West MS	80	58		-22	863	784		-79	43.8	25.9		-17.9
Fondren MS	0	278		278	--	759		--	--	20.1		--
Hartman MS	433	401		-32	773	757		-16	23.8	20.9		-2.8
Energized MS	120	118		-2	816	757		-59	32.5	16.1		-16.4
Pilgrim Acad	98	96		-2	731	751		20	13.3	14.6		1.3
McReynolds MS	162	172		10	751	749		-2	19.1	18.6		-0.5
Clifton MS	231	225		-6	790	748		-42	24.2	13.8		-10.5
Revere MS	368	379		11	788	741		-47	22.0	17.4		-4.6
Marshall MS	265	267		2	735	733		-2	13.2	13.1		-0.1
Fleming MS	155	140		-15	740	730		-10	9.7	7.1		-2.5
Reagan Ed Ctr PK-8	127	90		-37	703	723		20	3.9	8.9		5.0
Fonville MS	320	276		-44	730	722		-8	10.6	10.5		-0.1
Ortiz MS	305	309		4	759	721		-38	19.7	12.6		-7.1
Cullen MS	137	132		-5	685	712		27	5.8	7.6		1.7
Deady MS	185	203		18	743	707		-36	16.2	8.9		-7.3
Edison MS	209	196		-13	733	704		-29	9.1	10.7		1.6
Henry MS	258	249		-9	722	703		-19	8.9	7.2		-1.7
Victory Prep North	40	46		6	718	695		-23	10.0	6.5		-3.5
Gregory-Lincoln PK-8	82	82		0	755	694		-61	15.9	6.1		-9.8
Holland MS	207	172		-35	753	693		-60	14.0	5.8		-8.2
Lawson MS	309	303		-6	709	692		-17	8.4	6.3		-2.1
Young Scholars	5	10		5	*	691		*	*	0.0		*
Navarro MS	275	200		-75	728	689		-39	8.0	7.0		-1.0
Sugar Grove Academy	252	228		-24	694	689		-5	4.4	5.7		1.3
Attucks MS	154	154		0	713	688		-25	8.4	7.8		-0.6
E-STEM Central MS	78	99		21	689	685		-4	6.4	3.0		-3.4
Key MS	196	154		-42	694	684		-10	6.6	2.6		-4.0
Williams MS	96	128		32	742	680		-62	12.5	3.1		-9.4
Welch MS	254	200		-54	710	678		-32	8.3	5.0		-3.3
Inspired Acad	44	73		29	663	666		3	0.0	0.0		0.0
Thomas MS	134	152		18	710	663		-47	3.0	2.0		-1.0
Long Acad	249	0		-249	730	--			11.2	--		--
Woodson School	76	0		-76	715	--			5.3	--		--

"--" indicates no students tested, or no students met the benchmark.

* The College Board masks data for fewer than 10 test takers.

Sources: PSAT 8/9 2017 Fall Scores by Institution, 8th grade; PSAT 8/9 2016 Fall Scores by Institution, 8th grade

Table 1B (p. 17) shows the number of ninth grade students tested, average PSAT 8/9 total score, and percentage of students meeting both the ERW and math CCR benchmarks by campus.

- Milby, Waltrip, and Westbury high schools had the greatest increases in the number of ninth grade students taking the PSAT 8/9, with increases of 350, 123, and 104 students, respectively (Table 1B, p. 17).
- Carnegie Vanguard High School had the highest average total score at 1125 as well as the highest percentage of students who met both the ERW and math CCR benchmarks at 97.2 percent (Table 1B, p. 17).
- Middle College at HCC-Gulfton and Energized for STEM Southeast (E-STEM SE) high schools had the greatest increases in the percentage of students meeting both CCR benchmarks with increases of 12.8 and 7.3 percentage points, respectively (Table 1B, p. 17).

Table 1C (p. 18) shows the number of tenth grade students tested, average PSAT/NMSQT total score, and percentage of students meeting both the ERW and math CCR benchmarks by campus.

- Milby and Wisdom high schools had the greatest increases in the number of tenth grade students taking the PSAT/NMSQT, with increases of 122 and 95 students, respectively (Table 1C, p. 18).
- Carnegie Vanguard High School had the highest average total score at 1230 as well as the highest percentage of students who met both the ERW and math CCR benchmarks at 98.1 percent. This was closely followed by DeBakey High School with an average total score of 1174 and 96.4 percent of the tested tenth grade students meeting both CCR benchmarks (Table 1C, p. 18).
- Young Women's College Prep had the greatest increase in the percentage of students meeting both ERW and math CCR benchmarks with an increase of 10.2 percentage points (Table 1C, p.18).

Table 1D (p. 19) shows the number of eleventh grade students tested, average PSAT/NMSQT total score, and percentage of students meeting both the ERW and math CCR benchmarks by campus.

- Madison, Milby, and Westbury high schools had the greatest increases in the number of eleventh grade students taking the PSAT/NMSQT, with increases of 84, 81, and 79, respectively (Table 1D, p. 19).
- DeBakey High School for Health Professions (DeBakey) had the highest average score at 1326 followed by Carnegie Vanguard at 1290 (Table 1D, p. 19).
- DeBakey and Carnegie Vanguard high schools had the highest percentage of students meeting college and career readiness benchmarks at 100.0 percent and 95.2 percent, respectively (Table 1D, p. 19).
- Sharpstown International High School had the greatest increase in the percentage of students meeting both ERW and math CCR benchmarks with an increase of 13.9 percentage points (Table 1D, p. 19).

Table 1B. PSAT 8/9 Grade 9 Mean Total Scores and Percent Met CCR Benchmarks by Campus, 2016 and 2017 (Sorted by 2017 Mean Total Score)

Campus	Number Tested				Mean Total Score				Percent Met Both CCR Benchmarks			
	2016	2017		Change	2016	2017		Change	2016	2017		Change
Carnegie Vanguard HS	183	180		-3	1138	1125		-13	96.7	97.2		0.5
HSPVA	202	177		-25	1054	1093		39	77.2	83.6		6.4
DeBakey HS	276	296		20	1080	1055		-25	90.2	83.4		-6.8
Eastwood Academy	105	117		12	957	950		-7	72.4	62.4		-10.0
East ECHS	144	119		-25	960	946		-14	69.4	63.9		-5.5
HAIS	140	139		-1	938	941		3	60.0	55.4		-4.6
Challenge ECHS	126	130		4	944	935		-9	64.3	56.2		-8.1
North Houston ECHS	118	127		9	931	928		-3	61.9	56.7		-5.2
Bellaire HS	861	898		37	930	913		-17	48.7	43.8		-4.9
Mickey Leland College Prep	57	63		6	951	901		-50	63.2	49.2		-14.0
Lamar HS	892	788		-104	898	900		2	44.6	41.1		-3.5
Young Women's College Prep	75	58		-17	890	893		3	33.3	31.0		-2.3
Long Academy	62	67		5	872	877		5	43.5	34.3		-9.2
Energy Institute HS	193	200		7	885	876		-9	38.9	38.0		-0.9
HSLJ	158	119		-39	863	875		12	28.5	32.8		4.3
Sharpstown International	153	163		10	944	861		-83	64.1	34.4		-29.7
Westside HS	753	788		35	873	851		-22	40.4	33.5		-6.9
Mount Carmel	93	82		-11	848	842		-6	25.8	26.8		1.0
Heights HS	675	643		-32	836	822		-14	29.3	27.4		-1.9
South ECHS	138	140		2	817	814		-3	26.1	20.0		-6.1
E-STEM Southeast HS	54	59		5	786	813		27	13.0	20.3		7.3
Chavez HS	910	812		-98	804	794		-10	24.2	24.0		-0.2
Middle College at HCC Fraga	26	18		-8	800	784		-16	11.5	0.0		-11.5
Jones Futures Academy	113	101		-12	807	781		-26	22.1	14.9		-7.2
Waltrip HS	443	566		123	797	780		-17	20.1	16.4		-3.7
Milby HS	273	623		350	784	769		-15	20.9	15.9		-5.0
Northside HS	390	376		-14	791	765		-26	17.2	13.0		-4.2
Scarborough HS	207	190		-17	755	759		4	12.1	13.2		1.1
E-STEM West HS	78	120		42	797	758		-39	15.4	18.3		2.9
Westbury HS	522	626		104	755	744		-11	11.1	10.2		-0.9
Victory Prep South	47	66		19	764	742		-22	12.8	10.6		-2.2
Houston MSTC	761	731		-30	735	731		-4	8.8	8.2		-0.6
Furr HS	270	253		-17	775	729		-46	14.4	5.1		-9.3
Austin HS	522	423		-99	740	729		-11	8.6	5.7		-2.9
Washington HS	164	179		15	771	722		-49	9.1	7.8		-1.3
Sterling HS	351	401		50	719	717		-2	8.3	5.7		-2.6
North Forest HS	258	281		23	713	715		2	6.2	8.2		2.0
Wisdom HS	415	344		-71	741	715		-26	10.1	4.9		-5.2
Kashmere HS	195	192		-3	700	707		7	4.6	3.6		-1.0
Madison HS	484	343		-141	721	707		-14	7.0	3.8		-3.2
Worthing HS	194	250		56	690	689		-1	3.6	3.2		-0.4
Yates HS	245	224		-21	716	689		-27	7.8	3.1		-4.7
Sharpstown HS	468	553		85	727	687		-40	9.4	3.6		-5.8
Wheatley HS	240	271		31	695	685		-10	5.0	2.2		-2.8
Middle College at HCC Gulfon	33	19		-14	689	684		-5	3.0	15.8		12.8
Texas Connections	0	1		1	--	*			--	*		*

"--" indicates no students tested, or no students met the benchmark.

*The College Board masks data for fewer than 10 test takers.

Sources: PSAT 8/9 2017 Fall Scores by Institution, 9th grade; PSAT 8/9 2016 Fall Scores by Institution, 9th grade

Table 1C. PSAT/NMSQT Grade 10 Mean Total Scores and Percent Met CCR Benchmarks by Campus, 2016 and 2017
(Sorted by 2017 Mean Total Score)

Campus	Number Tested			Change	Mean Total Score			Change	Percent Met Both CCR Benchmarks			Change
	2016	2017			2016	2017			2016	2017		
Carnegie Vanguard HS	171	158		-13	1213	1230		17	97.7	98.1		0.4
DeBakey HS	215	220		5	1249	1174		-75	99.5	96.4		-3.1
HSPVA	186	196		10	1115	1107		-8	81.7	70.4		-11.3
Texas Connections	25	36		11	1062	1025		-37	64.0	55.6		-8.4
Eastwood Academy	106	97		-9	1000	984		-16	66.0	50.5		-15.5
Bellaire HS	710	747		37	1000	983		-17	51.8	45.2		-6.6
Challenge ECHS	112	114		2	1028	978		-50	66.1	49.1		-17.0
East ECHS	131	137		6	1010	967		-43	64.9	48.2		-16.7
Mickey Leland College Prep	50	48		-2	984	965		-19	56.0	47.9		-8.1
HAIS	128	117		-11	968	965		-3	42.2	37.6		-4.6
North Houston ECHS	119	117		-2	1006	963		-43	68.9	44.4		-24.5
Sharpstown International	170	139		-31	957	959		2	50.6	51.8		1.2
Energry Institute HS	201	164		-37	942	942		0	45.3	40.9		-4.4
Lamar HS	813	720		-93	933	928		-5	35.5	33.9		-1.6
Westside HS	724	659		-65	947	922		-25	42.5	35.4		-7.1
Young Women's College Prep	56	57		1	917	920		3	17.9	28.1		10.2
Long Academy	62	47		-15	868	885		17	24.2	21.3		-2.9
Mount Carmel	98	86		-12	895	872		-23	27.6	17.4		-10.2
HSLJ	100	140		40	874	871		-3	18.0	15.7		-2.3
Heights HS	581	572		-9	871	866		-5	20.3	18.5		-1.8
South ECHS	83	127		44	874	854		-20	22.9	15.0		-7.9
Chavez HS	696	688		-8	861	842		-19	26.0	19.3		-6.7
Scarborough HS	165	146		-19	807	831		24	8.5	12.3		3.8
Jones Futures Academy	114	109		-5	887	824		-63	27.2	11.9		-15.3
Waltrip HS	399	399		0	847	824		-23	19.3	13.0		-6.3
Northside HS	363	328		-35	801	806		5	9.1	9.5		0.4
Milby HS	282	404		122	787	801		14	8.5	9.9		1.4
E-STEM West HS	62	70		8	836	799		-37	14.5	10.0		-4.5
E-STEM Southeast HS	49	49		0	813	795		-18	6.1	8.2		2.1
Westbury HS	462	494		32	791	786		-5	6.5	8.3		1.8
Austin HS	475	417		-58	790	779		-11	7.2	7.0		-0.2
Furr HS	201	253		52	814	775		-39	11.4	8.3		-3.1
Middle College at HCC Fraga	21	35		14	763	769		6	4.8	2.9		-1.9
Sterling HS	230	304		74	765	766		1	6.1	5.6		-0.5
Sharpstown HS	286	357		71	768	763		-5	7.0	4.8		-2.2
Wisdom HS	340	435		95	754	762		8	4.4	6.9		2.5
Washington HS	156	174		18	752	762		10	3.2	5.2		2.0
Houston MSTC	645	633		-12	782	761		-21	4.8	3.3		-1.5
Wheatley HS	197	202		5	739	751		12	2.5	4.0		1.5
Kashmere HS	159	152		-7	757	745		-12	5.7	1.3		-4.4
Madison HS	347	365		18	790	744		-46	8.9	3.0		-5.9
North Forest HS	190	204		14	746	744		-2	2.1	2.5		0.4
Yates HS	156	166		10	773	742		-31	2.6	2.4		-0.2
Victory Prep South	37	21		-16	781	740		-41	0.0	0.0		0.0
Middle College at HCC Gulfton	28	31		3	736	740		4	0.0	3.2		3.2
Worthing HS	158	177		19	738	736		-2	3.2	4.0		0.8
Jordan HS	14	0		-14	731	--			0.0	--		

"--" indicates no students tested, or no students met the benchmark.

*The College Board masks data for fewer than 10 test takers.

Sources: PSAT/NMSQT 2017 Fall Scores by Institution, 10th grade; PSAT/NMSQT 2016 Fall Scores by Institution, 10th grade

Table 1D. PSAT/NMSQT Grade 11 Mean Total Scores and Percent Met CCR Benchmarks by Campus, 2016 and 2017
(Sorted by 2017 Mean Total Score)

Campus	Number Tested			Change	Mean Total Score			Change	Percent Met Both CCR Benchmarks			Change
	2016	2017			2016	2017			2016	2017		
DeBakey HS	190	191		1	1322	1326		4	99.5	100.0		0.5
Carnegie Vanguard HS	150	146		-4	1309	1290		-19	99.3	95.2		-4.1
HSPVA	193	172		-21	1177	1170		-7	80.3	73.3		-7.0
Challenge ECHS	124	104		-20	1101	1105		4	67.7	64.4		-3.3
Bellaire HS	669	601		-68	1076	1063		-13	52.9	50.1		-2.8
East ECHS	107	120		13	1034	1060		26	56.1	62.5		6.4
Eastwood Academy	107	103		-4	1062	1047		-15	60.7	59.2		-1.5
North Houston ECHS	110	116		6	1021	1036		15	50.0	50.9		0.9
Mickey Leland College Prep	33	45		12	1029	1022		-7	54.5	44.4		-10.1
Texas Connections	50	116		66	1066	1021		-45	54.0	31.0		-23.0
HAIS	115	116		1	1038	1017		-21	52.2	39.7		-12.5
Westside HS	601	605		4	1002	1012		10	40.6	44.3		3.7
Sharpstown International	119	164		45	930	994		64	22.7	36.6		13.9
Lamar HS	766	710		-56	987	986		-1	36.2	36.1		-0.1
Young Women's College Prep	48	36		-12	1014	978		-36	43.8	22.2		-21.6
Energy Institute HS	154	189		35	1000	965		-35	41.6	32.8		-8.8
Heights HS	503	512		9	927	935		8	24.9	24.4		-0.5
HSLJ	78	92		14	931	933		2	16.7	13.0		-3.7
Mount Carmel	85	90		5	973	926		-47	37.6	20.0		-17.6
South ECHS	58	69		11	937	918		-19	24.1	17.4		-6.7
Long Academy	47	51		4	924	913		-11	14.9	9.8		-5.1
Jones Futures Academy	96	106		10	878	894		16	17.7	19.8		2.1
Chavez HS	565	602		37	911	878		-33	24.8	14.5		-10.3
Waltrip HS	319	332		13	884	868		-16	15.7	12.0		-3.7
E-STEM West HS	84	51		-33	887	865		-22	22.6	7.8		-14.8
Milby HS	178	259		81	827	845		18	5.6	8.9		3.3
Northside HS	301	315		14	860	842		-18	11.6	7.3		-4.3
Austin HS	349	346		-3	850	822		-28	9.7	4.9		-4.8
Scarborough HS	166	153		-13	834	819		-15	7.8	5.2		-2.6
Westbury HS	391	470		79	832	817		-15	8.2	4.5		-3.7
Furr HS	197	212		15	829	807		-22	5.6	6.6		1.0
Madison HS	258	342		84	821	796		-25	5.0	3.8		-1.2
Middle College at HCC Fraga	34	29		-5	811	796		-15	0.0	0.0		0.0
Sterling HS	200	218		18	792	793		1	5.0	4.1		-0.9
Houston MSTC	555	599		44	821	793		-28	3.8	4.0		0.2
Wisdom HS	341	367		26	799	789		-10	4.4	4.9		0.5
Yates HS	140	145		5	768	788		20	5.0	2.8		-2.2
E-STEM Southeast HS	23	39		16	823	783		-40	4.3	2.6		-1.7
Sharpstown HS	315	178		-137	829	781		-48	7.6	2.2		-5.4
Washington HS	138	132		-6	808	781		-27	3.6	6.1		2.5
Kashmere HS	90	127		37	803	779		-24	5.6	2.4		-3.2
Victory Prep South	29	43		14	799	773		-26	0.0	0.0		0.0
Wheatley HS	117	168		51	738	764		26	2.6	0.6		-2.0
North Forest HS	189	162		-27	743	762		19	0.5	1.2		0.7
Worthing HS	145	111		-34	779	751		-28	3.4	0.0		-3.4
Middle College at HCC Gulfton	20	33		13	746	727		-19	0.0	0.0		0.0
Jordan HS	141	0		-141	846	--			11.3	--		

"--" indicates no students tested, or no students met the benchmark.

*The College Board masks data for fewer than 10 test takers.

Sources: PSAT/NMSQT 2017 Fall Scores by Institution, 11th grade; PSAT/NMSQT 2016 Fall Scores by Institution, 11th grade

Table 2A (p. 21) shows the average PSAT 8/9 mathematics and ERW scores and the percentage of eighth grade students meeting the math and ERW CCR benchmarks by campus.

- Eighth grade students at T.H. Rogers Middle School had the highest average score in both mathematics and ERW at 537 and 545, respectively (Table 2A, p. 21).
- T.H. Rogers Middle School had the highest percentage of eighth grade students meeting CCR benchmarks for mathematics and ERW at 96.6 percent and 100.0 percent, respectively (Table 2A, p. 21).
- Black and Hamilton middle schools had the greatest increases in the percentage of students meeting the mathematics CCR benchmark with increases of 13.7 and 13.0 percentage points, respectively (Table 2A, p. 21).
- Wilson Montessori had the greatest increase in the percentage of eighth grade students meeting the ERW CCR benchmark at 15.6 percentage points (Table 2A, p. 21).

Table 2B (p. 22) shows the average PSAT 8/9 mathematics and ERW scores and the percentage of ninth grade students meeting the math and ERW CCR benchmarks by campus.

- Carnegie Vanguard High School had the highest average score in mathematics at 568 and the High School for the Performing and Visual Arts (HSPVA) had the highest score for ERW at 561 (Table 2B, p. 22).
- Ninth grade students at HSPVA had the greatest increase in the mean mathematics score at 22 points, followed by E-STEM SE High School at 19 points (Table 2B, p. 22).
- Ninth grade students at HSPVA had the greatest increase in the mean ERW score at 17 percentage points, followed by the High School for Law and Justice (HSLJ) at 14 percentage points (Table 2B, p. 22).
- Carnegie Vanguard High School had the highest percentage of ninth grade students meeting CCR benchmarks for mathematics and ERW at 97.8 percent and 98.9 percent, respectively (Table 2B, p. 22).
- Ninth grade students at Middle College at HCC-Gulfton had the greatest increase in the percentage of students meeting the math and ERW CCR benchmarks at 12.8 and 22.5 percentage points, respectively (Table 2B, p. 22).

Table 2A. PSAT 8/9 Grade 8 Mean Scores and Percent Met CCR Benchmarks by Subject and Campus, 2016 and 2017

Campus	Mathematics									Evidence-Based Reading and Writing								
	Mean Score			Percent Met CCR			Mean Score			Percent Met CCR			Mean Score			Percent Met CCR		
	2016	2017	Change	2016	2017	Change	2016	2017	Change	2016	2017	Change	2016	2017	Change	2016	2017	Change
Attucks MS	369	350	-19	19.5	12.3	-7.2	344	339	-5	26.6	17.5	-9.1	344	339	-5	26.6	17.5	-9.1
Baylor College MS	448	440	-8	55.8	52.2	-3.6	464	441	-23	85.4	72.9	-12.5	464	441	-23	85.4	72.9	-12.5
Black MS	403	417	14	31.8	45.5	13.7	407	416	9	53.1	54.2	1.1	407	416	9	53.1	54.2	1.1
Briarmeadow MS	478	458	-20	84.4	77.8	-6.6	481	477	-4	97.8	93.3	-4.5	481	477	-4	97.8	93.3	-4.5
Burbank MS	430	409	-21	49.4	44.5	-4.9	409	390	-19	57.2	51.7	-5.5	409	390	-19	57.2	51.7	-5.5
Clifton MS	399	376	-23	29.4	21.3	-8.1	391	372	-19	48.9	37.8	-11.1	391	372	-19	48.9	37.8	-11.1
Cullen MS	334	356	22	8.8	16.7	7.9	352	356	4	21.9	22.7	0.8	352	356	4	21.9	22.7	0.8
Deady MS	383	363	-20	23.2	16.3	-6.9	360	345	-15	31.9	22.7	-9.2	360	345	-15	31.9	22.7	-9.2
Edison MS	372	361	-11	13.9	15.8	1.9	361	344	-17	29.7	21.9	-7.8	361	344	-17	29.7	21.9	-7.8
Engrized MS	420	392	-28	42.5	32.2	-10.3	396	365	-31	46.7	33.9	-12.8	396	365	-31	46.7	33.9	-12.8
E-STEM Central MS	363	349	-14	6.4	6.1	-0.3	326	336	10	17.9	17.2	-0.7	326	336	10	17.9	17.2	-0.7
E-STEM West MS	452	405	-47	58.8	34.5	-24.3	412	379	-33	60.0	44.8	-15.2	412	379	-33	60.0	44.8	-15.2
Fleming MS	376	369	-7	16.1	16.4	0.3	364	361	-3	32.3	27.1	-5.2	364	361	-3	32.3	27.1	-5.2
Fondren MS	--	395		--	32.7		--	364		--	31.3		--	364		--	31.3	
Fonville MS	374	366	-8	17.2	18.1	0.9	356	356	0	25.9	25.7	-0.2	356	356	0	25.9	25.7	-0.2
Garden Oaks	413	426	13	45.5	43.2	-2.3	456	442	-14	72.7	62.2	-10.5	456	442	-14	72.7	62.2	-10.5
Gregory-Lincoln PK-8	373	344	-29	19.5	13.4	-6.1	382	350	-32	41.5	26.8	-14.7	382	350	-32	41.5	26.8	-14.7
Hamilton MS	394	405	11	28.1	41.1	13.0	404	411	7	58.3	63.6	5.3	404	411	7	58.3	63.6	5.3
Hartman MS	395	382	-13	29.8	27.7	-2.1	377	376	-1	45.3	38.4	-6.9	377	376	-1	45.3	38.4	-6.9
Henry MS	364	356	-8	10.5	14.1	3.6	358	347	-11	23.6	20.9	-2.7	358	347	-11	23.6	20.9	-2.7
Hogg MS	400	400	0	30.0	32.2	2.2	394	395	1	52.0	50.2	-1.8	394	395	1	52.0	50.2	-1.8
Holland MS	376	350	-26	20.3	11.6	-8.7	377	343	-34	34.8	18.6	-16.2	377	343	-34	34.8	18.6	-16.2
Inspired Acad	328	336	8	2.3	1.4	-0.9	335	330	-5	15.9	5.5	-10.4	335	330	-5	15.9	5.5	-10.4
Key MS	355	348	-7	11.7	4.5	-7.2	339	336	-3	18.4	16.9	-1.5	339	336	-3	18.4	16.9	-1.5
Lanier MS	491	469	-22	76.2	74.4	-1.8	501	492	-9	89.1	87.4	-1.7	501	492	-9	89.1	87.4	-1.7
Lawson MS	367	355	-12	14.2	12.5	-1.7	343	337	-6	19.7	15.8	-3.9	343	337	-6	19.7	15.8	-3.9
Long Acad	373	--		18.1	--		357	--		28.1	--		357	--		28.1	--	
Marshall MS	376	375	-1	20.0	23.2	3.2	359	357	-2	25.7	25.1	-0.6	359	357	-2	25.7	25.1	-0.6
McReynolds MS	387	380	-7	29.0	25.0	-4.0	365	368	3	32.1	35.5	3.4	365	368	3	32.1	35.5	3.4
Meyerland MS	410	412	2	35.3	43.8	8.5	421	418	-3	64.2	59.8	-4.4	421	418	-3	64.2	59.8	-4.4
Mickey Leland College Prep	428	386	-42	46.9	23.9	-23.0	430	403	-27	74.5	61.4	-13.1	430	403	-27	74.5	61.4	-13.1
Navarro MS	375	349	-26	14.5	11.0	-3.5	353	340	-13	24.4	23.5	-0.9	353	340	-13	24.4	23.5	-0.9
Ortiz MS	389	368	-21	27.5	18.1	-9.4	369	353	-16	35.1	27.8	-7.3	369	353	-16	35.1	27.8	-7.3
Pershing MS	430	416	-14	45.8	42.0	-3.8	431	427	-4	67.8	60.8	-7.0	431	427	-4	67.8	60.8	-7.0
Pilgrim Acad	370	379	9	14.3	19.8	5.5	361	372	11	30.6	35.4	4.8	361	372	11	30.6	35.4	4.8
Pin Oak MS	478	490	12	72.4	79.8	7.4	492	502	10	85.5	89.0	3.5	492	502	10	85.5	89.0	3.5
Project Chrysalis MS	466	446	-20	73.1	62.7	-10.4	453	445	-8	82.8	80.7	-2.1	453	445	-8	82.8	80.7	-2.1
Reagan Ed Ctr PK-8	354	366	12	7.1	10.0	2.9	350	357	7	23.6	25.6	2.0	350	357	7	23.6	25.6	2.0
Revere MS	392	373	-19	26.9	23.5	-3.4	396	367	-29	47.6	35.6	-12.0	396	367	-29	47.6	35.6	-12.0
Sharpstown International	429	396	-33	50.9	33.3	-17.6	404	392	-12	54.0	50.3	-3.7	404	392	-12	54.0	50.3	-3.7
Stevenson MS	412	411	-1	37.3	42.7	5.4	403	395	-8	55.8	52.9	-2.9	403	395	-8	55.8	52.9	-2.9
Sugar Grove Academy	353	346	-7	9.5	9.6	0.1	341	343	2	16.7	18.9	2.2	341	343	2	16.7	18.9	2.2
T H Rogers	553	537	-16	97.7	96.6	-1.1	569	545	-24	99.2	100.0	0.8	569	545	-24	99.2	100.0	0.8
Tanglewood MS	401	389	-12	37.0	29.2	-7.8	419	402	-17	59.5	53.8	-5.7	419	402	-17	59.5	53.8	-5.7
The Rice School	436	416	-20	52.0	49.4	-2.6	430	421	-9	72.7	73.1	0.4	430	421	-9	72.7	73.1	0.4
The Rusk School	449	411	-38	60.0	40.4	-19.6	441	399	-42	78.2	61.5	-16.7	441	399	-42	78.2	61.5	-16.7
Thomas MS	359	342	-17	7.5	6.6	-0.9	351	321	-30	21.6	13.2	-8.4	351	321	-30	21.6	13.2	-8.4
Victory Prep North	370	360	-10	15.0	13.0	-2.0	348	335	-13	22.5	21.7	-0.8	348	335	-13	22.5	21.7	-0.8
Welch MS	360	346	-14	12.6	10.0	-2.6	350	332	-18	23.6	20.5	-3.1	350	332	-18	23.6	20.5	-3.1
Westbriar MS	412	413	1	38.7	44.9	6.2	425	433	8	63.5	64.2	0.7	425	433	8	63.5	64.2	0.7
Wharton K-8 Dual Language	503	430	-73	88.9	58.3	-30.6	502	387	-115	100.0	37.5	-62.5	502	387	-115	100.0	37.5	-62.5
Williams MS	382	340	-42	21.9	5.5	-16.4	360	340	-20	32.3	18.8	-13.5	360	340	-20	32.3	18.8	-13.5
Wilson Montessori	432	438	6	43.5	53.8	10.3	448	477	29	65.2	80.8	15.6	448	477	29	65.2	80.8	15.6
Woodson School	357	--		7.9	--		358	--		25.0	--		358	--		25.0	--	
Young Scholars	--	352			30.0		--	339		--	10.0		--	339		--	10.0	
Young Women's College Prep	410	394	-16	34.5	30.8	-3.7	447	434	-13	82.7	78.5	-4.2	447	434	-13	82.7	78.5	-4.2

"--" indicates no students tested, or no students met the benchmark.

Sources: PSAT 8/9 2017 Fall Scores by Institution, 8th grade; PSAT 8/9 2016 Fall Scores by Institution, 8th grade

Table 2B. PSAT 8/9 Grade 9 Mean Scores and Percent Met CCR Benchmarks by Subject and Campus, 2016 and 2017

Campus	Mathematics								Evidence-Based Reading and Writing								
	Mean Score			Percent Met CCR					Mean Score			Percent Met CCR					
	2016	2017	Change	2016	2017	Change			2016	2017	Change	2016	2017	Change			
Austin HS	377	371	<div></div>	-6	14.6	10.2	<div></div>	-4.4	363	358	<div></div>	-5	20.7	20.3	<div></div>		-0.4
Bellaire HS	464	452	<div></div>	-12	54.1	46.8	<div></div>	-7.3	466	462	<div></div>	-4	66.7	64.5	<div></div>		-2.2
Carnegie Vanguard HS	566	568	<div></div>	2	97.8	97.8	<div></div>	0.0	572	557	<div></div>	-15	98.9	98.9	<div></div>		0.0
Challenge ECHS	467	467	<div></div>	0	69.8	60.8	<div></div>	-9.0	477	469	<div></div>	-8	84.9	81.5	<div></div>		-3.4
Chavez HS	406	405	<div></div>	-1	30.5	29.4	<div></div>	-1.1	399	389	<div></div>	-10	42.1	37.3	<div></div>		-4.8
DeBakey HS	540	532	<div></div>	-8	92.8	86.5	<div></div>	-6.3	540	523	<div></div>	-17	96.0	92.9	<div></div>		-3.1
East ECHS	484	480	<div></div>	-4	78.5	73.1	<div></div>	-5.4	476	466	<div></div>	-10	84.7	83.2	<div></div>		-1.5
Eastwood Academy	481	476	<div></div>	-5	79.0	66.7	<div></div>	-12.3	477	474	<div></div>	-3	86.7	85.5	<div></div>		-1.2
Energy Institute HS	446	438	<div></div>	-8	48.2	41.5	<div></div>	-6.7	439	438	<div></div>	-1	60.1	62.0	<div></div>		1.9
E-STEM Southeast HS	399	418	<div></div>	19	20.4	32.2	<div></div>	11.8	386	394	<div></div>	8	29.6	39.0	<div></div>		9.4
E-STEM West HS	406	389	<div></div>	-17	26.9	20.8	<div></div>	-6.1	391	370	<div></div>	-21	35.9	28.3	<div></div>		-7.6
Furr HS	394	366	<div></div>	-28	21.1	9.1	<div></div>	-12.0	381	363	<div></div>	-18	30.0	23.3	<div></div>		-6.7
HAIS	458	458	<div></div>	0	62.1	58.3	<div></div>	-3.8	480	483	<div></div>	3	83.6	84.9	<div></div>		1.3
Heights HS	416	410	<div></div>	-6	34.4	32.0	<div></div>	-2.4	420	412	<div></div>	-8	55.7	49.3	<div></div>		-6.4
Houston MSTC	376	375	<div></div>	-1	14.3	13.0	<div></div>	-1.3	359	356	<div></div>	-3	20.0	20.0	<div></div>		0.0
HSLJ	428	426	<div></div>	-2	34.8	33.6	<div></div>	-1.2	435	449	<div></div>	14	65.8	69.7	<div></div>		3.9
HSPVA	510	532	<div></div>	22	79.7	84.7	<div></div>	5.0	544	561	<div></div>	17	93.1	97.2	<div></div>		4.1
Jones Futures Academy	414	403	<div></div>	-11	36.3	26.7	<div></div>	-9.6	393	378	<div></div>	-15	37.2	29.7	<div></div>		-7.5
Kashmere HS	358	360	<div></div>	2	8.7	9.4	<div></div>	0.7	341	347	<div></div>	6	11.8	12.5	<div></div>		0.7
Lamar HS	439	444	<div></div>	5	49.3	45.7	<div></div>	-3.6	459	455	<div></div>	-4	70.0	67.1	<div></div>		-2.9
Long Academy	438	443	<div></div>	5	51.6	41.8	<div></div>	-9.8	435	434	<div></div>	-1	64.5	65.7	<div></div>		1.2
Madison HS	365	358	<div></div>	-7	11.2	7.3	<div></div>	-3.9	356	349	<div></div>	-7	16.7	15.2	<div></div>		-1.5
Mickey Leland College Prep	477	450	<div></div>	-27	75.4	55.6	<div></div>	-19.8	474	451	<div></div>	-23	77.2	71.4	<div></div>		-5.8
Middle College at HCC Fraga	401	391	<div></div>	-10	15.4	5.6	<div></div>	-9.8	398	393	<div></div>	-5	46.2	22.2	<div></div>		-24.0
Middle College at HCC Gulfton	342	358	<div></div>	16	3.0	15.8	<div></div>	12.8	347	325	<div></div>	-22	9.1	31.6	<div></div>		22.5
Milby HS	397	393	<div></div>	-4	24.2	23.4	<div></div>	-0.8	387	375	<div></div>	-12	37.7	29.7	<div></div>		-8.0
Mount Carmel	419	417	<div></div>	-2	34.4	28.0	<div></div>	-6.4	429	425	<div></div>	-4	57.0	58.5	<div></div>		1.5
North Forest HS	360	362	<div></div>	2	11.2	11.0	<div></div>	-0.2	353	353	<div></div>	0	18.2	18.1	<div></div>		-0.1
North Houston ECHS	468	480	<div></div>	12	67.8	74.0	<div></div>	6.2	463	449	<div></div>	-14	81.4	68.5	<div></div>		-12.9
Northside HS	394	385	<div></div>	-9	22.3	17.8	<div></div>	-4.5	396	380	<div></div>	-16	39.2	30.6	<div></div>		-8.6
Scarborough HS	386	387	<div></div>	1	20.3	19.5	<div></div>	-0.8	368	372	<div></div>	4	27.1	27.4	<div></div>		0.3
Sharpstown HS	368	350	<div></div>	-18	14.3	6.1	<div></div>	-8.2	359	337	<div></div>	-22	21.4	11.9	<div></div>		-9.5
Sharpstown International	486	443	<div></div>	-43	77.1	45.4	<div></div>	-31.7	458	418	<div></div>	-40	75.2	50.9	<div></div>		-24.3
South ECHS	407	404	<div></div>	-3	34.1	25.7	<div></div>	-8.4	410	409	<div></div>	-1	46.4	42.9	<div></div>		-3.5
Sterling HS	360	360	<div></div>	0	13.7	8.2	<div></div>	-5.5	359	357	<div></div>	-2	21.4	19.5	<div></div>		-1.9
Texas Connections	--	*			--	*			--	*			--	*			
Victory Prep South	381	369	<div></div>	-12	17.0	13.6	<div></div>	-3.4	383	373	<div></div>	-10	31.9	24.2	<div></div>		-7.7
Waltrip HS	398	395	<div></div>	-3	27.1	21.2	<div></div>	-5.9	399	385	<div></div>	-14	41.3	33.7	<div></div>		-7.6
Washington HS	383	361	<div></div>	-22	14.6	12.3	<div></div>	-2.3	388	361	<div></div>	-27	27.4	22.3	<div></div>		-5.1
Westbury HS	379	376	<div></div>	-3	16.1	12.9	<div></div>	-3.2	376	368	<div></div>	-8	29.7	27.3	<div></div>		-2.4
Westside HS	434	422	<div></div>	-12	45.2	36.8	<div></div>	-8.4	439	429	<div></div>	-10	61.4	54.1	<div></div>		-7.3
Wheatley HS	354	344	<div></div>	-10	8.3	4.8	<div></div>	-3.5	341	341	<div></div>	0	15.0	9.2	<div></div>		-5.8
Wisdom HS	378	365	<div></div>	-13	17.1	9.6	<div></div>	-7.5	364	350	<div></div>	-14	20.2	16.9	<div></div>		-3.3
Worthing HS	345	349	<div></div>	4	6.7	5.2	<div></div>	-1.5	345	340	<div></div>	-5	18.0	10.4	<div></div>		-7.6
Yates HS	360	345	<div></div>	-15	11.0	4.5	<div></div>	-6.5	356	343	<div></div>	-13	19.2	14.7	<div></div>		-4.5
Young Women's College Prep	424	431	<div></div>	7	34.7	36.2	<div></div>	1.5	466	462	<div></div>	-4	80.0	72.4	<div></div>		-7.6

"--" indicates no students tested, or no students met the benchmark.

The College Board masks data for fewer than 10 test takers.

Sources: PSAT 8/9 2017 Fall Scores by Institution, 9th grade; PSAT 8/9 2016 Fall Scores by Institution, 9th grade

Table 2C (p. 24) shows the average PSAT/NMSQT mathematics and ERW scores and the percentage of tenth grade students meeting the math and ERW CCR benchmarks by campus.

- Carnegie Vanguard High School had the highest average score in both mathematics and ERW at 613 and 617, respectively (Table 2C, p. 24).
- Tenth grade students at Carnegie Vanguard High School had the greatest increase in the mean mathematics score at 14 points, followed by Wheatley High School at 13 points (Table 2C, p. 24).
- Tenth grade students at Long Academy and Scarborough High School had the greatest increases in the mean ERW score at 17 points each, followed by Milby High School at 15 points (Table 2C, p. 24).
- Carnegie Vanguard High School had the highest percentage of tenth grade students meeting CCR benchmarks for mathematics and ERW at 98.1 percent and 100.0 percent, respectively (Table 2C, p. 24).
- Tenth grade students at Young Women's College Prep had the greatest increase in the percentage of students meeting math CCR benchmarks at 11.9 percentage points, and E-STEM SE HS had the greatest increase in the percentage of tenth grade students meeting ERW CCR benchmarks at 18.4 percentage points (Table 2C, p. 24).

Table 2D (p. 25) shows the average PSAT/NMSQT mathematics and ERW scores and the percentage of eleventh grade students meeting the math and ERW CCR benchmarks by campus.

- DeBakey High School had the highest average score in both mathematics and ERW at 676 and 650, respectively (Table 2D, p. 25).
- Eleventh grade students at Wheatley and Sharpstown International high schools had the greatest increase in the mean mathematics score at 21 points (Table 2D, p. 25).
- Eleventh grade students at Sharpstown International High School had the greatest increase in the mean ERW score at 43 points, followed by East Early College High School (ECHS) at 15 points (Table 2D, p. 25).
- DeBakey High School had the highest percentage of eleventh grade students meeting CCR benchmarks for mathematics at 100 percent, followed by Carnegie Vanguard High School at 95.2 percent (Table 2D, p. 25).
- Carnegie Vanguard and DeBakey high schools had the highest percentage of eleventh grade students meeting CCR benchmarks for ERW at 100 percent each, followed by HSPVA at 97.7 percent (Table 2D, p. 25).
- Eleventh grade students at Sharpstown International High School had the greatest increase in the percentage of students meeting math and ERW benchmarks at 9.9 percentage points and 26.4 percentage points, respectively (Table 2D, p. 25).

Table 2C. PSAT/NMSQT Grade 10 Mean Scores and Percent Met CCR Benchmarks by Subject and Campus, 2016 and 2017

Campus	Mathematics							Evidence-Based Reading and Writing								
	Mean Score			Percent Met CCR				Mean Score			Percent Met CCR					
	2016	2017	Change	2016	2017	Change		2016	2017	Change	2016	2017	Change			
Austin HS	407	400	<div></div>	-7	13.9	9.4	<div></div>	-4.5	383	379	<div></div>	-4	23.2	22.3	<div></div>	-0.9
Bellaire HS	494	487	<div></div>	-7	55.1	46.2	<div></div>	-8.9	505	496	<div></div>	-9	72.4	68.8	<div></div>	-3.6
Carnegie Vanguard HS	599	613	<div></div>	14	97.7	98.1	<div></div>	0.4	615	617	<div></div>	2	100.0	100.0	<div></div>	0.0
Challenge ECHS	499	473	<div></div>	-26	67.0	51.8	<div></div>	-15.2	529	505	<div></div>	-24	89.3	86.0	<div></div>	-3.3
Chavez HS	438	429	<div></div>	-9	31.6	23.1	<div></div>	-8.5	423	413	<div></div>	-10	46.0	39.0	<div></div>	-7.0
DeBakey HS	627	592	<div></div>	-35	100.0	97.3	<div></div>	-2.7	621	583	<div></div>	-38	99.5	99.1	<div></div>	-0.4
East ECHS	506	483	<div></div>	-23	70.2	50.4	<div></div>	-19.8	504	484	<div></div>	-20	84.7	84.7	<div></div>	0.0
Eastwood Academy	502	490	<div></div>	-12	73.6	54.6	<div></div>	-19.0	498	494	<div></div>	-4	84.9	86.6	<div></div>	1.7
Energy Institute HS	473	465	<div></div>	-8	50.7	43.3	<div></div>	-7.4	469	477	<div></div>	8	65.2	66.5	<div></div>	1.3
E-STEM Southeast HS	425	398	<div></div>	-27	12.2	10.2	<div></div>	-2.0	388	397	<div></div>	9	16.3	34.7	<div></div>	18.4
E-STEM West HS	436	404	<div></div>	-32	22.6	14.3	<div></div>	-8.3	400	395	<div></div>	-5	33.9	30.0	<div></div>	-3.9
Furr HS	416	395	<div></div>	-21	15.4	10.7	<div></div>	-4.7	397	380	<div></div>	-17	30.3	20.2	<div></div>	-10.1
HAIS	473	468	<div></div>	-5	44.5	39.3	<div></div>	-5.2	495	496	<div></div>	1	84.4	81.2	<div></div>	-3.2
Heights HS	434	424	<div></div>	-10	24.1	19.8	<div></div>	-4.3	437	442	<div></div>	5	52.2	54.4	<div></div>	2.2
Houston MSTC	398	388	<div></div>	-10	7.4	5.2	<div></div>	-2.2	384	374	<div></div>	-10	22.8	17.2	<div></div>	-5.6
HSLJ	432	436	<div></div>	4	23.0	17.1	<div></div>	-5.9	442	434	<div></div>	-8	56.0	54.3	<div></div>	-1.7
HSPVA	537	528	<div></div>	-9	82.8	71.4	<div></div>	-11.4	578	580	<div></div>	2	96.2	91.3	<div></div>	-4.9
Jones Futures Academy	462	417	<div></div>	-45	38.6	17.4	<div></div>	-21.2	425	407	<div></div>	-18	43.9	35.8	<div></div>	-8.1
Jordan HS	381	--			0.0	--			349	--			7.1	--		
Kashmere HS	386	378	<div></div>	-8	9.4	2.0	<div></div>	-7.4	371	366	<div></div>	-5	17.6	11.2	<div></div>	-6.4
Lamar HS	453	451	<div></div>	-2	36.8	35.6	<div></div>	-1.2	480	477	<div></div>	-3	68.9	66.8	<div></div>	-2.1
Long Academy	445	446	<div></div>	1	29.0	27.7	<div></div>	-1.3	423	440	<div></div>	17	48.4	61.7	<div></div>	13.3
Madison HS	401	375	<div></div>	-26	11.2	3.8	<div></div>	-7.4	389	370	<div></div>	-19	27.4	15.6	<div></div>	-11.8
Mickey Leland College Prep	490	478	<div></div>	-12	56.0	52.1	<div></div>	-3.9	494	488	<div></div>	-6	84.0	83.3	<div></div>	-0.7
Middle College at HCC Fraga	390	395	<div></div>	5	4.8	2.9	<div></div>	-1.9	373	374	<div></div>	1	19.0	17.1	<div></div>	-1.9
Middle College at HCC Gulfon	371	380	<div></div>	9	0.0	3.2	<div></div>	3.2	365	360	<div></div>	-5	10.7	9.7	<div></div>	-1.0
Milby HS	404	403	<div></div>	-1	13.8	11.6	<div></div>	-2.2	383	398	<div></div>	15	25.5	33.9	<div></div>	8.4
Mount Carmel	446	436	<div></div>	-10	30.6	20.9	<div></div>	-9.7	449	435	<div></div>	-14	60.2	52.3	<div></div>	-7.9
North Forest HS	374	374	<div></div>	0	4.7	2.9	<div></div>	-1.8	371	370	<div></div>	-1	19.5	14.2	<div></div>	-5.3
North Houston ECHS	500	480	<div></div>	-20	73.1	50.4	<div></div>	-22.7	505	483	<div></div>	-22	88.2	73.5	<div></div>	-14.7
Northside HS	403	407	<div></div>	4	10.5	11.9	<div></div>	1.4	398	399	<div></div>	1	31.7	29.6	<div></div>	-2.1
Scarborough HS	416	423	<div></div>	7	13.3	17.1	<div></div>	3.8	391	408	<div></div>	17	24.8	37.7	<div></div>	12.9
Sharpstown HS	392	388	<div></div>	-4	10.1	7.8	<div></div>	-2.3	376	375	<div></div>	-1	21.0	17.1	<div></div>	-3.9
Sharpstown International	485	491	<div></div>	6	57.6	58.3	<div></div>	0.7	471	468	<div></div>	-3	72.4	66.2	<div></div>	-6.2
South ECHS	438	420	<div></div>	-18	26.5	18.1	<div></div>	-8.4	436	434	<div></div>	-2	54.2	52.0	<div></div>	-2.2
Sterling HS	388	386	<div></div>	-2	10.0	6.3	<div></div>	-3.7	376	380	<div></div>	4	20.4	24.3	<div></div>	3.9
Texas Connections	510	497	<div></div>	-13	64.0	58.3	<div></div>	-5.7	552	528	<div></div>	-24	92.0	88.9	<div></div>	-3.1
Victory Prep South	386	387	<div></div>	1	2.7	4.8	<div></div>	2.1	395	353	<div></div>	-42	21.6	4.8	<div></div>	-16.8
Waltrip HS	432	413	<div></div>	-19	26.8	15.0	<div></div>	-11.8	415	410	<div></div>	-5	42.4	37.8	<div></div>	-4.6
Washington HS	375	383	<div></div>	8	3.2	5.7	<div></div>	2.5	377	380	<div></div>	3	18.6	17.8	<div></div>	-0.8
Westbury HS	401	397	<div></div>	-4	9.1	9.7	<div></div>	0.6	390	389	<div></div>	-1	28.6	26.3	<div></div>	-2.3
Westside HS	473	459	<div></div>	-14	47.2	37.6	<div></div>	-9.6	475	462	<div></div>	-13	66.4	60.5	<div></div>	-5.9
Wheatley HS	370	383	<div></div>	13	4.6	5.4	<div></div>	0.8	369	368	<div></div>	-1	13.2	13.9	<div></div>	0.7
Wisdom HS	382	389	<div></div>	7	6.5	9.2	<div></div>	2.7	372	374	<div></div>	2	18.8	17.9	<div></div>	-0.9
Worthing HS	370	369	<div></div>	-1	5.7	4.5	<div></div>	-1.2	368	368	<div></div>	0	10.8	15.8	<div></div>	5.0
Yates HS	385	370	<div></div>	-15	6.4	3.0	<div></div>	-3.4	388	373	<div></div>	-15	21.2	21.1	<div></div>	-0.1
Young Women's College Prep	437	441	<div></div>	4	17.9	29.8	<div></div>	11.9	481	479	<div></div>	-2	76.8	71.9	<div></div>	-4.9

--" indicates no students tested, or no students met the benchmark.

Sources: PSAT/NMSQT 2017 Fall Scores by Institution, 10th grade; PSAT/NMSQT 2016 Fall Scores by Institution, 10th grade

Table 2D. PSAT/NMSQT Grade 11 Mean Scores and Percent Met CCR Benchmarks by Subject and Campus, 2016 and 2017

Campus	Mathematics								Evidence-Based Reading and Writing							
	Mean Score				Percent Met CCR				Mean Score				Percent Met CCR			
	2016	2017	Change		2016	2017	Change		2016	2017	Change		2016	2017	Change	
Austin HS	439	417		-22	14.3	6.9		-7.4	411	405		-6	27.2	19.9		-7.3
Bellaire HS	539	528		-11	54.7	51.6		-3.1	537	536		-1	73.8	73.0		-0.8
Carnegie Vanguard HS	657	644		-13	99.3	95.2		-4.1	651	646		-5	100.0	100.0		0.0
Challenge ECHS	538	535		-3	67.7	66.3		-1.4	564	570		6	97.6	91.3		-6.3
Chavez HS	462	445		-17	28.5	17.9		-10.6	449	433		-16	45.1	35.9		-9.2
DeBakey HS	672	676		4	100.0	100.0		0.0	650	650		0	99.5	100.0		0.5
East ECHS	519	529		10	58.9	67.5		8.6	516	531		15	82.2	86.7		4.5
Eastwood Academy	534	529		-5	63.6	63.1		-0.5	528	518		-10	86.9	82.5		-4.4
Energy Institute HS	497	477		-20	45.5	36.5		-9.0	503	489		-14	69.5	59.3		-10.2
E-STEM Southeast HS	406	403		-3	8.7	2.6		-6.1	417	380		-37	26.1	7.7		-18.4
E-STEM West HS	454	439		-15	27.4	11.8		-15.6	433	426		-7	32.1	33.3		1.2
Furr HS	419	405		-14	8.1	6.6		-1.5	410	401		-9	23.9	20.3		-3.6
HAIS	513	496		-17	54.8	40.5		-14.3	525	521		-4	82.6	81.0		-1.6
Heights HS	470	466		-4	31.2	27.3		-3.9	457	470		13	47.5	54.1		6.6
Houston MSTC	411	400		-11	4.3	4.5		0.2	410	393		-17	22.7	17.9		-4.8
HSLJ	460	454		-6	21.8	13.0		-8.8	471	479		8	62.8	58.7		-4.1
HSPVA	568	562		-6	81.9	73.3		-8.6	608	608		0	95.9	97.7		1.8
Jones Futures Academy	454	458		4	21.9	22.6		0.7	424	436		12	35.4	35.8		0.4
Jordan HS	428	--			15.6	--			418	--			30.5	--		
Kashmere HS	404	393		-11	8.9	4.7		-4.2	399	386		-13	18.9	12.6		-6.3
Lamar HS	490	484		-6	41.0	36.8		-4.2	497	502		5	63.7	65.4		1.7
Long Academy	459	461		2	21.3	21.6		0.3	464	451		-13	46.8	39.2		-7.6
Madison HS	423	402		-21	9.7	5.3		-4.4	397	393		-4	19.8	19.0		-0.8
Mickey Leland College Prep	508	503		-5	54.5	51.1		-3.4	522	519		-3	78.8	75.6		-3.2
Middle College at HCC Fraga	412	403		-9	5.9	0.0		-5.9	399	392		-7	11.8	20.7		8.9
Middle College at HCC Gulfton	377	368		-9	0.0	0.0		0.0	370	358		-12	5.0	9.1		4.1
Milby HS	421	429		8	7.3	12.4		5.1	406	416		10	24.2	26.3		2.1
Mount Carmel	488	460		-28	42.4	24.4		-18.0	485	466		-19	69.4	51.1		-18.3
North Forest HS	371	383		12	0.5	1.2		0.7	372	379		7	11.1	13.0		1.9
North Houston ECHS	511	513		2	52.7	51.7		-1.0	510	523		13	78.2	83.6		5.4
Northside HS	436	426		-10	14.0	9.5		-4.5	424	416		-8	33.9	25.1		-8.8
Scarborough HS	419	415		-4	10.8	7.8		-3.0	414	404		-10	28.9	20.9		-8.0
Sharpstown HS	424	400		-24	11.1	2.8		-8.3	405	381		-24	23.5	14.6		-8.9
Sharpstown International	475	496		21	30.3	40.2		9.9	455	498		43	43.7	70.1		26.4
South ECHS	465	454		-11	31.0	18.8		-12.2	472	464		-8	60.3	56.5		-3.8
Sterling HS	403	402		-1	8.0	5.0		-3.0	389	391		2	20.0	16.5		-3.5
Texas Connections	516	488		-28	58.0	33.6		-24.4	550	533		-17	84.0	80.2		-3.8
Victory Prep South	396	385		-11	0.0	0.0		0.0	403	389		-14	20.7	11.6		-9.1
Waltrip HS	447	435		-12	21.6	13.6		-8.0	437	434		-3	40.1	39.2		-0.9
Washington HS	415	401		-14	7.2	6.8		-0.4	393	380		-13	18.1	17.4		-0.7
Westbury HS	418	409		-9	10.0	5.5		-4.5	414	408		-6	27.6	24.7		-2.9
Westside HS	501	506		5	43.9	46.4		2.5	501	506		5	65.2	69.3		4.1
Wheatley HS	367	388		21	4.3	0.6		-3.7	372	376		4	8.5	13.1		4.6
Wisdom HS	408	404		-4	5.9	7.6		1.7	392	385		-7	17.3	14.7		-2.6
Worthing HS	393	376		-17	3.4	1.8		-1.6	386	375		-11	11.7	8.1		-3.6
Yates HS	388	393		5	5.7	2.8		-2.9	380	394		14	17.9	25.5		7.6
Young Women's College Prep	497	462		-35	43.8	22.2		-21.6	517	516		-1	75.0	83.3		8.3

-- indicates no students tested, or no students met the benchmark.

Sources: PSAT/NMSQT 2017 Fall Scores by Institution, 11th grade; PSAT/NMSQT 2016 Fall Scores by Institution, 11th grade

Conclusion

HISD launched the *PSAT for All* initiative in 2003 as way to enroll more students in Advanced Placement courses and prepare them to be successful on the SAT which is required by most colleges. The district-wide initiative enabled all HISD tenth graders to take the PSAT/NMSQT for free. On August 12, 2010, the HISD Board of Education expanded the *PSAT for All* program to include incoming ninth-graders for the 2010–2011 school year. Currently, the district supports participation in the PSAT 8/9 and the PSAT/NMSQT by paying for the exams in grades 8 through 10, resulting in participation rates that surpass those of the state and the nation.

Over the past three years, PSAT/NMSQT participation for tenth grade students has increased by 359 students from 10,953 to 11,312 and PSAT 8/9 participation has increased by 9 students from 13,307 to 13,316. In 2017, the district administered the PSAT/NMSQT to 83 percent of students in grade 10 and 81 percent of students in grade 9. This exposure to college readiness and entrance exams such as the PSAT represents an integral step to succeeding on the SAT, a widely accepted college entrance exam.

Performance may have been negatively impacted due to Hurricane Harvey since the test was administered on October 11, 2017, and the majority of students had been back to school for only four weeks. An analysis of performance on the PSAT 8/9 and the PSAT/NMSQT revealed that mean subject and total scores for the district were lower than those for Texas and the nation at all grade levels. Mean math scores were higher than ERW scores at all grade levels, but math scores were still lower than their state and national counterparts. Students at all grade levels were less likely to meet CCR benchmarks compared to their state and national counterparts. Performance differences existed across student groups in both assessments as well as across campuses. HISD White students at all grade levels scored higher on average than their counterparts across the state and the nation. In addition, from 2015 to 2017, the percentage of ninth grade Asian and White students meeting both CCR and math benchmarks increased, and the percentage of students meeting ERW benchmarks for African American, Asian, White, and Two or more races increased.