

## MEMORANDUM

November 28, 2022

TO: Board Members

FROM: Millard L. House II  
Superintendent of Schools

SUBJECT: **SAT SCHOOL DAY RESULTS, 2021–2022**

CONTACT: Allison Matney, (713) 556-6700

The results for the 2021–2022 SAT School Day administrations have been released by the College Board and are provided in this report along with data from prior years for comparison. Due to the COVID-19 pandemic the Spring 2020 SAT School Day administration was canceled, and participation in the 2020–2021 SAT School Day administrations was low. The SAT consists of two sections: Evidence-Based Reading and Writing (ERW) and mathematics. Each subject is scored on a scale from 200 to 800. The highest composite score a student can earn is 1600.

Key findings include:

- During the 2021–2022 school year, 73.1 percent of HISD juniors (9,014) and 42.1 percent of HISD seniors (4,629) participated in SAT School Day. Participation increased from 2020–2021 but not to pre-pandemic levels
- In 2022, the average SAT scores decreased for HISD juniors to the lowest point since 2018.
- In 2022, the mean SAT scores for HISD juniors were slightly lower than those from the state and total group although the scores for HISD seniors were higher than those from the total group.
- In 2022, the percentage of HISD students meeting both college and career readiness benchmarks decreased to 20 percent for 11th graders and to 11 percent for 12th graders.

Should you have any further questions, please contact Allison Matney in Research and Accountability at (713) 556-6700.

 MLH

Attachment

cc: Superintendent's Direct Reports  
Assistant Superintendents  
School Support Officers  
High School Principals  
Rahshene Davis, Ed.D.  
David Johnston

## Assessment Brief: October 13, 2022 SAT School Day Results, 2021–2022

This report summarizes the participation and performance of Houston Independent School District (HISD) juniors and seniors who participated in the 2021–2022 administrations of the SAT School Day offered by the College Board and paid for by the district on October 13, 2021, October 28, 2021, March 2, 2022, March 23, 2022, and April 13, 2022. The dates in the fall are primarily for seniors, and the dates in the spring are primarily for juniors. The fall SAT School Day was added during the 2020–2021 school year; therefore, results for seniors are only shown for 2020–2021 and 2021–2022. Due to the COVID-19 pandemic, the district's Spring 2020 SAT School Day was canceled and participation in the 2020–2021 SAT School Days was low. In the 2021–2022 school year, the number of students tested increased from 2020–2021 but did not reach the participation numbers from before the pandemic.

### Key Findings

- **Table 1** (p. 2) shows that 73.1 percent of HISD juniors (9,014) and 42.1 percent of HISD seniors (4,629) participated in SAT School Day during the 2021–2022 school year. Participation for juniors increased from 2020–2021 but did not reach pre-pandemic levels.
- **Figure 1** (p. 2) shows the SAT School Day participation rates for 11<sup>th</sup> and 12<sup>th</sup> graders by race/ethnicity. Participation rates increased across all groups in 11<sup>th</sup> grade from 2021 to 2022 with the highest increases coming from African American and Hispanic students. Participation rates across all groups in 12<sup>th</sup> grade decreased.
- **Figure 2** (p. 3) shows the average SAT scores for juniors and seniors from the district, state, and total group. In 2021, participation rates were low but average SAT scores were high. In 2022, the average SAT scores decreased for HISD juniors to the lowest point since 2018.
- In 2022, the mean SAT scores for HISD juniors were slightly lower than those from the state and total group although the scores for HISD seniors were higher than those from the total group (Figure 2).
- In 2022, the percentage of HISD students meeting both college and career readiness benchmarks decreased to 20 percent for 11<sup>th</sup> graders and to 11 percent for 12<sup>th</sup> graders (**Figure 3**, p. 4).
- From 2021 to 2022, average composite scores decreased across all groups with the largest decrease coming from 11<sup>th</sup> grade Hispanic students and 12<sup>th</sup> grade Asian students (**Figure 4**, p. 5).
- Comparing 2021 to 2022, the participation rate for juniors increased at 37 campuses and the average composite score for juniors increased at 14 campuses (**Table 2**, p. 6).
- Comparing 2021 to 2022, the participation rate for seniors increased at 17 campuses and the average composite score for seniors increased at 18 campuses (**Table 3**, p. 7).
- **Table 4** (p. 8) shows the number of 11<sup>th</sup> graders who were within 50 points of meeting the CCMR SAT ELA and Math benchmarks by campus in 2022.

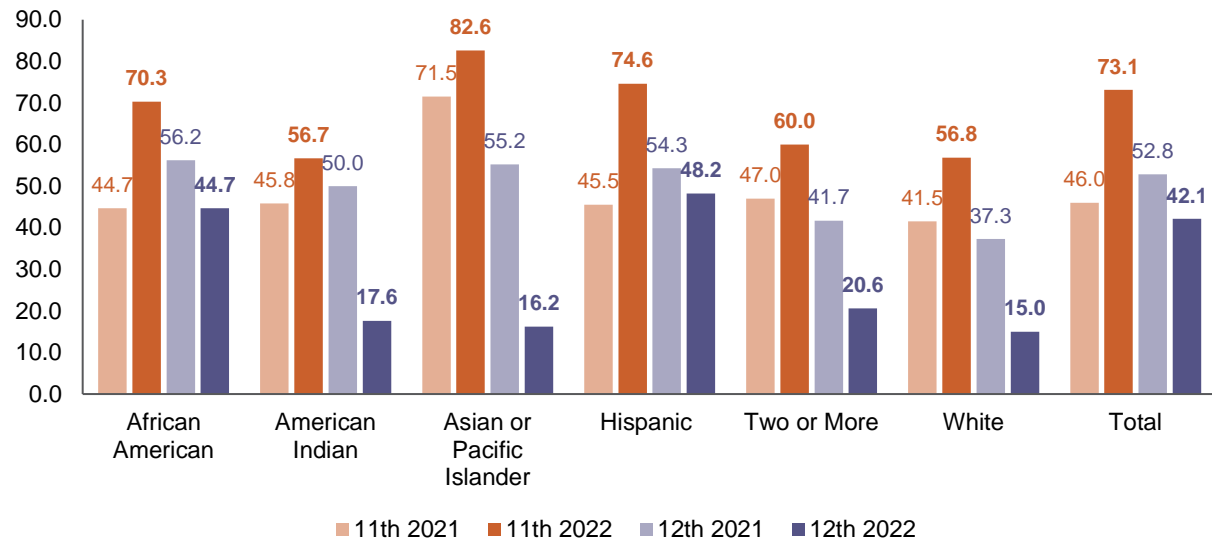
**Table 1. Number of 11<sup>th</sup> and 12<sup>th</sup> Graders Tested by Ethnicity, 2017–2018 through 2021–2022**

Student Group	2018	2019	2021		2022	
	11th	11th	11th	12th	11th	12th
African American	2,250	2,050	1,259	1,447	1,930	1,073
American Indian	23	25	11	12	17	3
Asian or Pacific Islander	468	413	377	296	418	82
Hispanic	5,921	6,190	3,509	3,969	5,612	3,234
Two or More	85	134	70	53	102	26
White	747	759	562	477	777	187
No Response or Unknown	77	80	0	0	158	24
<b>Total Tested</b>	<b>9,571</b>	<b>9,651</b>	<b>5,782</b>	<b>6,254</b>	<b>9,014</b>	<b>4,629</b>
<b>Total Enrolled</b>	<b>11,374</b>	<b>11,327</b>	<b>12,578</b>	<b>11,846</b>	<b>12,338</b>	<b>11,004</b>
<b>Percentage Tested</b>	<b>84.1</b>	<b>85.2</b>	<b>46.0</b>	<b>52.8</b>	<b>73.1</b>	<b>42.1</b>

Sources: College Board results, 7/25/2018, 5/21/2019; SAT School Day data file, 11/18/2021, 9/6/2022; SIS extract, 4/23/2018, 4/22/2019, 11/18/2021; PEIMS Fall Snapshot file, 2020, 2021

Note: The demographic data for 2018–2019 are from the College Board, which include self-reported data. The demographic data for 2021 is from HISD's SIS. The demographic data for 2022 is from the PEIMS Fall Snapshot file. The total number of 11<sup>th</sup> grade students for 2018–2019 are from the SIS extracts in the Spring of those respective school years. The total number of students for 2021–2022 is from the PEIMS Fall Snapshot file.

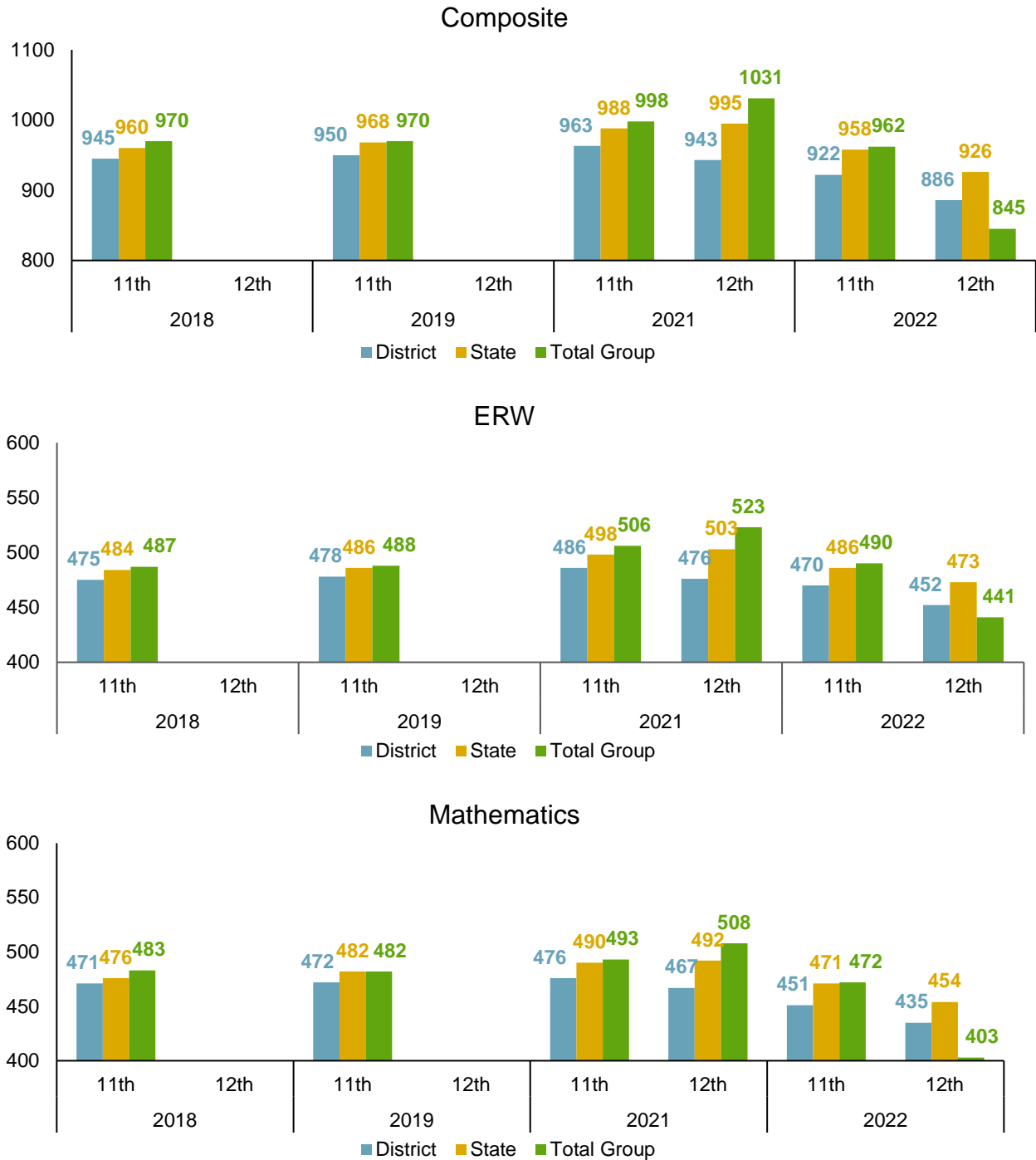
**Figure 1. SAT School Day Participation Rates of 11<sup>th</sup> and 12<sup>th</sup> Graders by Race/Ethnicity, 2020–2021 and 2021–2022**



Sources: SAT School Day data file, 11/18/2021, 9/6/2022; PEIMS Fall Snapshot file, 2020, 2021

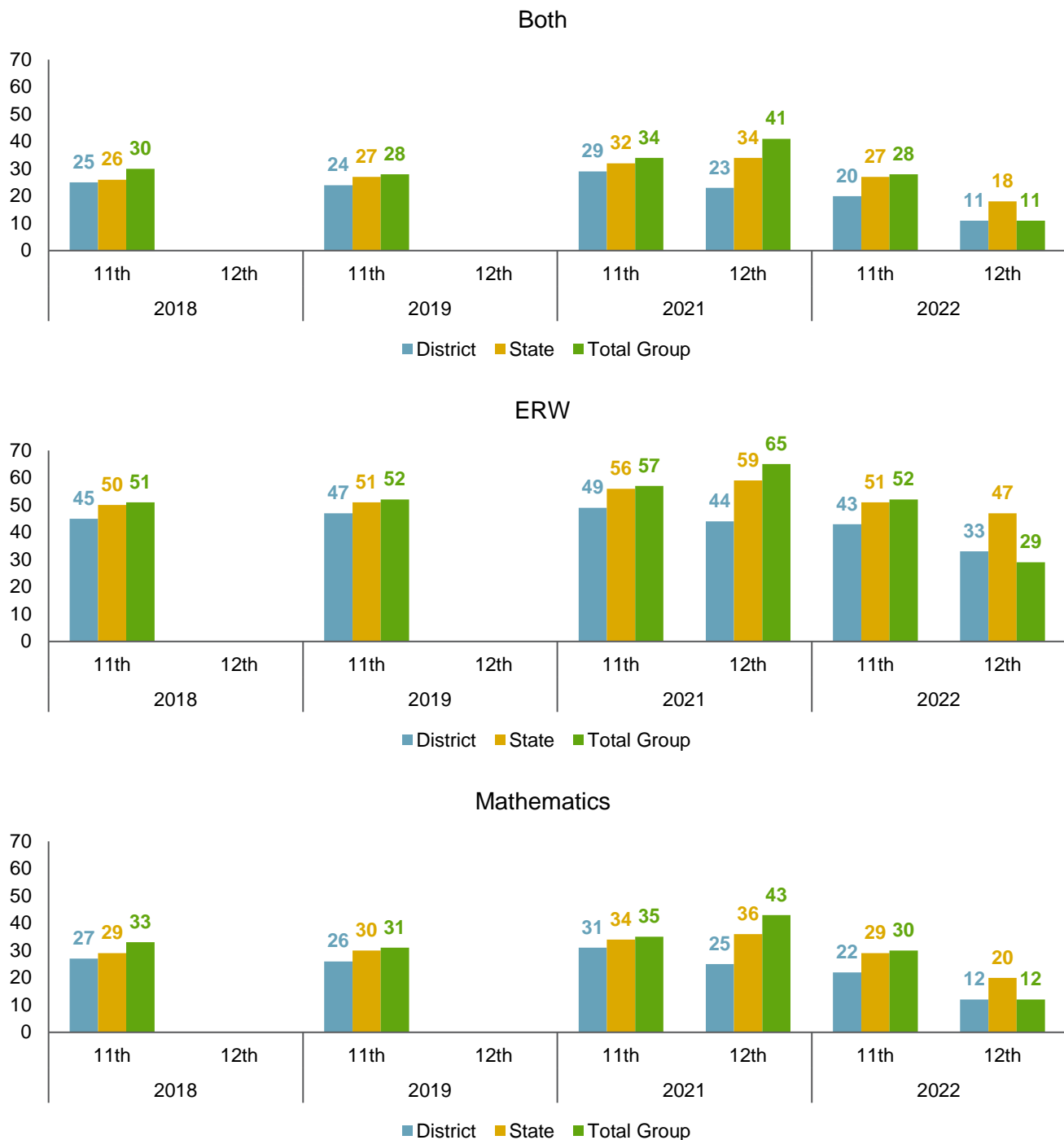
Notes: The demographic data for 2021 is from HISD's SIS. The demographic data for 2022 is from the PEIMS Fall Snapshot file. The total number of students for 2021–2022 is from the PEIMS Fall Snapshot file. Percentages may be greater than 100 due to differences in data file dates.

**Figure 2. Average SAT Scores of 11<sup>th</sup> and 12<sup>th</sup> Graders by Subject, 2017–2018 through 2021–2022**



Sources: College Board SAT School Day Summary, 7/25/2018, 5/21/2019, 11/8/2021, 10/3/2022; SAT School Day data file, 11/18/2021, 9/6/2022

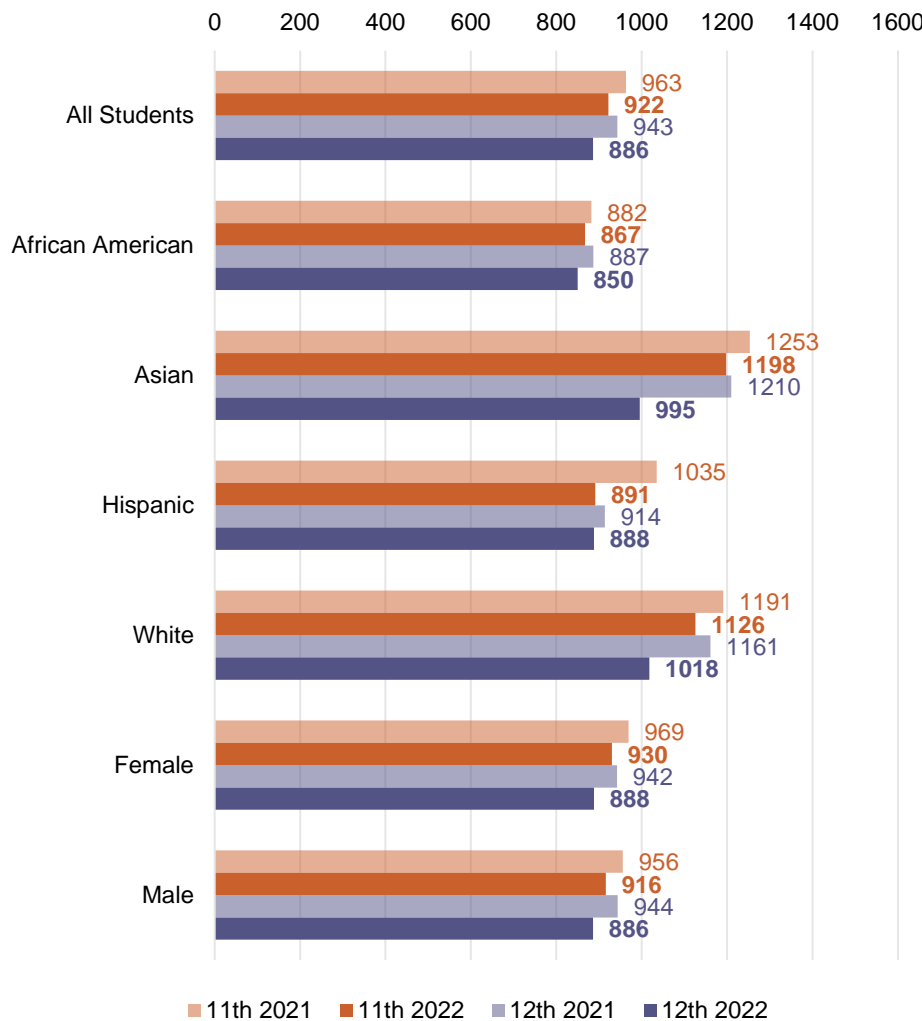
**Figure 3. Percentage of 11<sup>th</sup> and 12<sup>th</sup> Graders Tested who Met College and Career Readiness Benchmarks, 2017–2018 through 2021–2022**



Sources: College Board SAT School Day Summary, 7/25/2018, 5/21/2019, 11/8/2021, 10/3/2022; SAT School Day data file, 11/18/2021, 9/6/2022

Note: The College and Career Readiness Benchmarks are 480 in Evidenced-Based Reading and Writing (ERW) and 530 in mathematics.

**Figure 4. Average Composite SAT Scores of 11<sup>th</sup> and 12<sup>th</sup> Graders by Race/Ethnicity and Gender, 2020–2021 and 2021–2022**



Sources: SAT School Day data file, 11/18/2021, 9/6/2022; PEIMS Fall Snapshot file, 2020, 2021

**Table 2. Number and Percentage Tested, Average Composite Score, and Percentage Meeting Both College and Career Readiness Benchmarks for 11th Graders, 2020–2021 and 2021–2022**

Campus Name	2021				2022			
	Number Tested	% Tested	Average Composite Score	% Met Both Benchmarks	Number Tested	% Tested	Average Composite Score	% Met Both Benchmarks
Austin HS	180	53.6	838	4	218	64.9	824	3
Bellaire HS	305	36.8	1182	66	734	96.5	1035	39
Carnegie HS	242	91.3	1316	95	208	94.5	1253	85
Challenge ECHS	107	97.3	1071	47	112	105.7	1018	25
Chavez HS	310	55.5	904	19	444	91.0	867	10
DeBakey HS	163	76.5	1246	88	202	92.2	1215	80
East ECHS	108	95.6	1018	32	104	97.2	1023	37
Eastwood Acad	86	85.1	1059	51	103	96.3	1046	39
Energy Inst HS	157	88.2	1001	33	181	97.3	1036	37
E-STEM Central HS	37	28.0	838	5	120	93.8	830	8
Furr HS	79	32.8	812	3	215	78.5	819	4
Heights HS	168	28.8	1060	46	417	80.5	972	26
Hou Acad. Intl.	71	63.4	1047	42	118	97.5	1002	25
Houston MSTC HS	21	3.6	888	5	426	70.5	828	4
HS for Law & Justice	85	74.6	938	11	84	89.4	930	7
HS Perf. Vis. Arts	130	69.1	1210	76	186	96.9	1189	69
Jones HS	22	33.3	901	27	54	88.5	850	13
Kashmere HS	57	38.0	804	5	108	65.1	796	3
Lamar HS	438	65.5	1033	41	534	79.0	1003	32
Leland YMCPA	35	76.1	935	17	37	92.5	959	11
Liberty HS	2	1.2	*	*	11	4.0	866	9
Long Acad	5	11.1	906	0	48	85.7	928	17
Madison HS	205	46.3	789	3	304	72.4	815	4
Mid Coll - Fraga	16	59.3	819	6	43	97.7	866	14
Mid Coll - Gulfton	21	51.2	807	19	12	30.0	825	0
Milby HS	345	67.3	840	8	446	85.1	837	6
Mount Carmel Acad.	76	91.6	904	12	65	87.8	859	3
N. Houston ECHS	125	92.6	994	26	113	103.7	980	27
North Forest HS	50	22.2	743	2	157	66.5	766	1
Northside HS	122	37.7	893	15	245	87.5	869	9
Scarborough HS	50	31.3	846	10	120	72.7	813	3
Sharpstown HS	0	0.0	---	---	213	66.1	792	1
Sharpstown Intl	134	82.2	995	29	154	96.9	961	20
South ECHS	65	70.7	980	28	95	91.3	983	30
Sterling HS	220	57.6	802	5	214	67.1	799	3
Tx Conn. Acad.	21	2.3	1151	67	59	5.4	1072	37
Waltrip HS	331	73.6	892	14	360	93.3	861	10
Washington HS	54	33.1	836	7	133	69.3	816	5
Westbury HS	301	53.4	856	10	361	74.0	838	6
Westside HS	350	50.7	1047	42	621	92.7	979	31
Wheatley HS	61	40.4	800	2	83	57.6	809	4
Wisdom HS	176	42.7	778	5	284	68.9	794	3
Worthing HS	125	62.8	796	2	134	72.0	794	0
Yates HS	78	38.4	761	4	101	54.6	806	2
YWCPA	48	77.4	1036	46	33	91.7	1038	33
<b>District</b>	<b>5,782</b>	<b>46.0</b>	<b>963</b>	<b>29</b>	<b>9,014</b>	<b>73.1</b>	<b>922</b>	<b>20</b>

Sources: SAT School Day data file, 11/18/2021, 9/6/2022; SIS extract, 11/18/2021, PEIMS Fall Snapshot, 2020, 2021

Notes: The campus and grade level data for 2021 is from HISD's SIS. The campus and grade level data for 2022 are from the SAT School Day data file. The total numbers of students for are from the PEIMS Fall Snapshot files. Percentages may be greater than 100 due to differences in data file dates. \* denotes that fewer than 5 students were tested.

**Table 3. Number and Percentage Tested, Average Composite Score, and Percentage Meeting Both College and Career Readiness Benchmarks for 12th Graders, 2020–2021 and 2021–2022**

Campus Name	2021				2022			
	Number Tested	% Tested	Average Composite Score	% Met Both Benchmarks	Number Tested	% Tested	Average Composite Score	% Met Both Benchmarks
Austin HS	172	53.8	848	3	87	30.0	872	7
Bellaire HS	355	44.9	1116	54	172	26.6	997	30
Carnegie HS	106	65.0	1345	97	1	0.4	*	*
Challenge ECHS	90	79.6	1091	54	15	14.6	1038	53
Chavez HS	315	52.2	900	15	360	79.6	884	10
DeBakey HS	146	78.5	1287	92	7	3.6	1181	71
East ECHS	95	92.2	1030	34	72	64.3	1026	33
Eastwood Acad	90	78.9	1073	52	21	22.1	932	19
Energy Inst HS	140	84.8	1023	36	106	64.2	961	23
E-STEM Central HS	70	63.6	881	14	99	83.9	876	7
Furr HS	147	65.6	838	2	101	45.7	837	3
Heights HS	271	52.2	982	25	366	69.2	949	19
Hou Acad. Intl.	37	30.3	1104	54	24	24.2	1055	33
Houston MSTC HS	323	58.2	822	4	393	75.7	827	2
HS for Law & Justice	53	60.2	960	23	36	35.6	934	11
HS Perf. Vis. Arts	118	65.2	1233	73	1	0.6	*	*
Jones HS	50	54.3	883	8	37	56.9	902	5
Kashmere HS	104	50.5	806	3	94	67.6	831	3
Lamar HS	359	55.0	1031	40	245	39.3	904	8
Leland YMCPA	34	77.3	1055	41	40	102.6	979	15
Liberty HS	25	19.1	778	0	16	23.5	801	6
Long Acad	7	12.7	1061	29	14	34.1	914	14
Madison HS	160	43.7	816	3	226	62.1	822	1
Mid Coll - Fraga	9	52.9	870	11	19	90.5	855	5
Mid Coll - Gulfon	9	36.0	798	11	13	50.0	794	0
Milby HS	385	76.4	857	8	152	33.5	876	7
Mount Carmel Acad.	76	89.4	935	16	3	4.7	*	*
N. Houston ECHS	98	91.6	1077	48	70	53.0	1003	24
North Forest HS	82	39.2	797	7	153	79.7	808	4
Northside HS	149	42.0	895	15	157	55.5	908	11
Scarborough HS	94	55.0	847	3	77	53.1	845	8
Sharpstown HS	68	19.6	841	3	107	34.9	855	5
Sharpstown Intl	38	26.2	967	21	84	51.2	939	16
South ECHS	85	81.7	978	21	56	65.1	979	29
Sterling HS	226	67.9	809	4	243	85.0	835	3
Tx Conn. Acad.	37	4.8	1016	35	38	4.3	1030	47
Waltrip HS	341	74.3	894	12	132	33.0	904	14
Washington HS	64	48.9	817	5	74	48.7	832	3
Westbury HS	403	76.5	874	9	290	65.6	876	9
Westside HS	326	53.5	1058	44	89	14.7	977	25
Wheatley HS	60	33.5	791	2	54	36.5	816	0
Wisdom HS	226	59.6	822	6	194	59.9	804	1
Worthing HS	105	55.0	784	5	27	17.4	838	4
Yates HS	83	53.5	824	5	38	21.2	786	0
YWCPA	23	69.7	1056	30	26	44.8	965	15
<b>District</b>	<b>6,254</b>	<b>52.8</b>	<b>943</b>	<b>23</b>	<b>4,629</b>	<b>42.1</b>	<b>886</b>	<b>11</b>

Sources: SAT School Day data file, 11/18/2021, 9/6/2022; PEIMS Fall Snapshot, 2020, 2021

Notes: The campus and grade level data are from the SAT School Day data file. The total numbers of students are from the PEIMS Fall Snapshot file. Percentages may be greater than 100 due to differences in data file dates. \* denotes that fewer than 5 students were tested.

Table 4. Number of 11th Graders within 50 Points of CCMR Benchmark, 2021–2022

Campus Name	2022		
	Number Tested	Number 430 <= ERW < 480	Number 480 <= Math < 530
Austin HS	218	55	32
Bellaire HS	734	118	101
Carnegie HS	208	4	16
Challenge ECHS	112	20	34
Chavez HS	444	93	76
DeBakey HS	202	7	20
East ECHS	104	27	21
Eastwood Acad	103	15	27
Energy Inst HS	181	31	37
E-STEM Central HS	120	28	14
Furr HS	215	38	23
Heights HS	417	82	97
Hou Acad. Intl.	118	20	33
Houston MSTC HS	426	100	50
HS for Law & Justice	84	21	23
HS Perf. Vis. Arts	186	5	28
Jones HS	54	11	6
Kashmere HS	108	22	5
Lamar HS	534	93	104
Leland YMCPA	37	8	17
Liberty HS	11	0	1
Long Acad	48	12	9
Madison HS	304	52	38
Mid Coll - Fraga	43	8	2
Mid Coll - Gulfton	12	1	2
Milby HS	446	87	51
Mount Carmel Acad.	65	20	10
N. Houston ECHS	113	27	28
North Forest HS	157	24	11
Northside HS	245	60	47
Scarborough HS	120	19	15
Sharpstown HS	213	44	21
Sharpstown Intl	154	40	27
South ECHS	95	16	25
Sterling HS	214	50	14
Tx Conn. Acad.	59	7	17
Waltrip HS	360	96	40
Washington HS	133	31	12
Westbury HS	361	71	39
Westside HS	621	110	102
Wheatley HS	83	21	5
Wisdom HS	284	52	32
Worthing HS	134	28	13
Yates HS	101	26	11
YWCPA	33	8	9
<b>District</b>	<b>9,014</b>	<b>1,708</b>	<b>1,345</b>

Sources: SAT School Day data file, 9/6/2022; PEIMS Fall Snapshot, 2021