

Proposed Goal Progress Measure Revisions

Date: 02/27/2025
Accountability and Reporting



Objectives

Inform and clearly communicate the rationale for goal progress measure (GPM) recommended updates, emphasizing their improved predictiveness and alignment with district board goals.

Ensure board alignment and buy-in on recommended revisions to GPM metrics and/or targets

Answer questions and obtain feedback on all revisions ahead of formal approval at the March board meeting.

Propose an updated LSG Monitoring Calendar that aligns with all recommended revisions.

Introduction

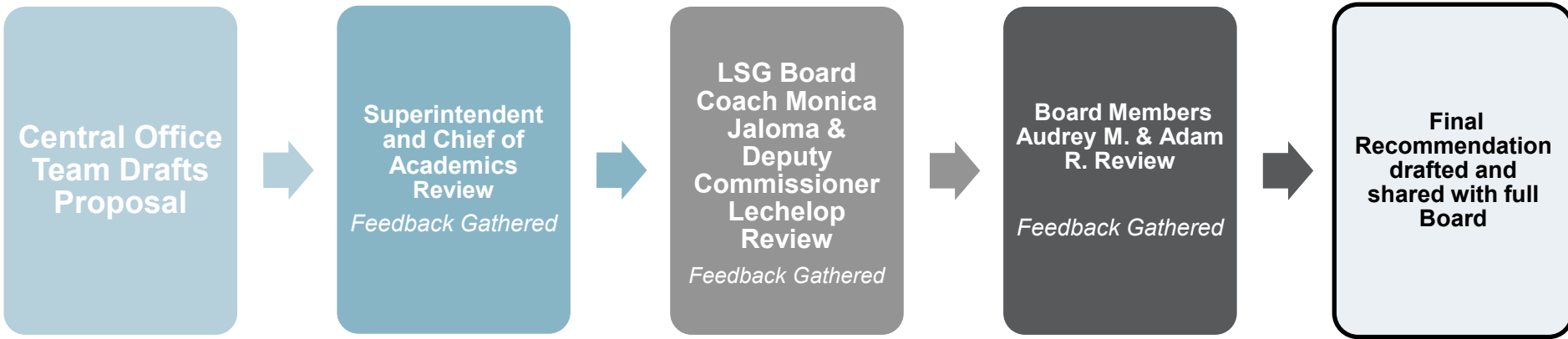
Reasons For Change

- **Exceeding Targets** – HISD has exceeded its 2028 targets in some areas. Using the data that has been collected over the past 1.5 years, HISD can reset higher targets using data from past performance.
- **Greater Transparency**- Across multiple goals, the CGI metric was used which was complex to interpret. HISD has proposed updated metrics to improve the visibility and transparency of progress towards the goals.

Recommendation Process

- **Data Analysis** – Review of additional student performance data to identify more effective metrics
- **Consultation with Lone Star Governance** - Expertise and recommendations for refining our approach
- **Preview & Small Group Discussion**- Collaborative review with Adam and Audrey to ensure alignment with district priorities.

Review Committee Process



TEA has shared that these proposed revisions meet LSG GPM Criteria:

- Challenge the organization
- Require adult behavior change
- Are influenceable by the Superintendent
- Are predictive of their respective student outcome goals

Overview of Agenda

Goal 1	Goal 2	Goal 3	Goal 4
GPM 1.1	GPM 2.1	GPM 3.1	GPM 4.1
GPM 1.2	GPM 2.2	GPM 3.2	GPM 4.2
GPM 1.3	GPM 2.3	GPM 3.3	GPM 4.3
		GPM 3.4	
		GPM 3.5	

LSG
Calendar
Revisions

*Items in **blue** will be discussed today.*

Follow Along!

The Board Goals & Constraints Tracker (MS Excel document) provides an overview of all existing GPM language, targets, and 2024 EOY data, along with proposed revisions.

Overview of Board Goal Progress Measure Recommended Updates

Metric #	Current Metric	Proposed Metric Change	Approved Targets						Actual	Proposed Target Revision	Status	Decision 2/27/25
			Baseline	2024	2025	2026	2027	2028	2024			
Goal 1	The percent of 3rd grade students in Houston ISD earning Meets Grade Level on the STAAR reading test will increase from 41% in June 2023 to 56% in June 2028.	No Change	41	42	44	49	53	56	40	N/A	No Action Needed	N/A
1.1	The percentage of 3rd grade students projected at Meets Grade Level on NWEA MAP in reading will increase from 28% in September 2023 to 43% in May 2028	No change to metric or target (did not exceed 2028 target)	28	29	30	35	40	43	29	N/A	No Action Needed	N/A
1.2	The percentage of grade 3 students attending a New Education System (NES) or NES-aligned (NES-A) campus projected at Meets Grade Level in reading on NWEA MAP will increase from 18% in September 2023 to 38% in May 2028.	No change to metric or target (did not exceed 2028 target)	18	20	23	28	33	38	30	N/A	No Action Needed	N/A
1.3	GPM 1.3: The percentage of 3rd students that have a CGI of 6 or higher on the NWEA MAP in reading will increase from 34% in January 2024 to 49% in May 2028.	The percentage of 2nd grade students who grow one or more proficiency levels or maintain Meets or Masters from BOY to EOY on NWEA MAP in Reading will increase from XX in June 2024 to YY in June 2028.	41	41	49	53	56	56	41	Revised GPM metric - Proposed Targets are in blue	Approved To Move to Full Board	Select
Metric #	Current Metric	Proposed Metric Change	Approved Targets						Actual	Proposed Target Revision	Status	Decision 2/27/25
			Baseline	2024	2025	2026	2027	2028	2024			
Goal 2	The percent of 3rd grade students in Houston ISD earning Meets Grade Level on the STAAR math test will increase from 38% in June 2023 to 53% in June 2028.	No Change	38	39	41	47	51	53	Add	N/A	No Action Needed	N/A



2.27.25



Goal 1 Recap

Metric #	Current Metric	Proposed Change	Status
Goal 1	The percent of 3rd grade students in Houston ISD earning Meets Grade Level on the STAAR reading test will increase from 41% in June 2023 to 56% in June 2028.	No Change	No Action Needed
1.1	The percentage of 3rd grade students projected at Meets Grade Level on NWEA MAP in reading will increase from 28% in September 2023 to 43% in May 2028	No Change	No Action Needed
1.2	The percentage of grade 3 students attending a New Education System (NES) or NES-aligned (NES-A) campus projected at Meets Grade Level in reading on NWEA MAP will increase from 18% in September 2023 to 38% in May 2028.	No Change	No Action Needed
1.3	The percentage of 3rd students that have a CGI of .6 or higher on the NWEA MAP in reading will increase from 34% in January 2024 to 49% in May 2028.	The percentage of 2nd grade students who grow one or more proficiency levels or maintain Meets or Masters from BOY to EOY on NWEA MAP in Reading will increase from XX in June 2024 to YY in June 2028.	Recommended for Full Board Review

Current Growth Metric: CGI

3rd Grade

GPM 1.3

The percentage of 3rd students that have a CGI of .6 or higher on the NWEA MAP in reading will increase from 34% in January 2024 to 49% in May 2028.

GPM 2.3

The percentage of 3rd grade students that have a CGI of .6 or higher on the NWEA MAP in math will increase from 40% in January 2024 to 55% in May 2028.

Proposal: Projected Achievement Level Growth

Definition: Occurs when a student demonstrates enough growth in their performance to move from their current projected achievement band to a higher band (e.g., from Did Not Meet to Approaches or from Approaches to Meets, etc.) on NWEA MAP.

*This methodology is based on the calculation process used for Domain 2A in the Texas Accountability System.

GPM 1.3 and 2.3 Considerations

Grade Level Scope:

- 3rd Grade Only
- 2nd Grade Only
- 2nd -3rd Grade

Student Group Scope:

- All students who move up 1+ achievement band(s) or maintain their proficiency at or above Meets
- Students who have not yet achieved Projected Meets

2nd Grade MAP Context

- **Early Indicator:** A 2nd grade NWEA MAP score is considered a predictor of a student's 3rd grade STAAR performance, offering valuable insights into future academic achievement.
- **Early Monitoring Advantage:** By utilizing 2nd grade MAP projections, the district gains more time to monitor student progress and implement necessary adjustments before the STAAR-tested year, supporting proactive intervention and resource allocation.

Measuring Student Growth for Accountability (D2A)

EOY Score

BOY Score

	DNM	Approaches	Meets	Masters
Does Not Meet				
Approaches				
Meets				
Masters				

Table is read horizontally

Avoiding Duplication of GPMs 1.1 and 2.1

Concern: Including 3rd grade in Projected Achievement Level Growth calculation would be redundant, as GPM 1.1 and 2.1 already report on their projected Meets GL.



	DNM	Approaches	Meets	Masters
Does Not Meet				
Approaches				
Meets				
Masters				

GPM 1.1: The percentage of 3rd grade students **projected at Meets Grade Level** on NWEA MAP in reading will increase from 28% in September 2023 to 43% in May 2028

GPM 2.1: The percentage of all 3rd graders **projected at Meets Grade Level** on NWEA MAP in math will increase from 24% in September 2023 to 39% in May 2028.

Proposal: Focusing on 2nd grade for GPMs 1.3 and 2.3 avoids overlap with GPM 1.1 and 2.1, eliminating redundancy and offering an earlier indicator.

Measuring Student Growth for Accountability (D2A)

		EOY Score			
BOY Score		DNM	Approaches	Meets	Masters
	Does Not Meet				
	Approaches				
	Meets				
	Masters				

Growth or
Maintain
Above Meets

Regression or
Maintain Below
Meets



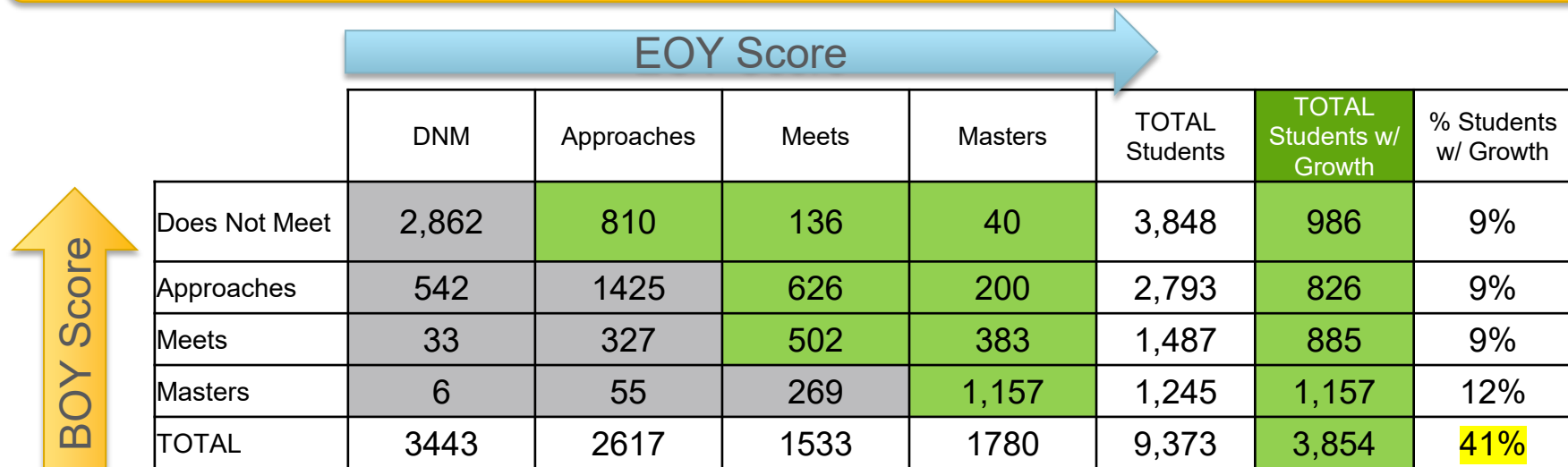
Student 1 scored Does Not Meets at BOY and grew to Approaches by EOY.



Student 2 scored Masters at BOY and fell to Meets at EOY.

Proposed GPM 1.3 – SY23-24 Data

The percentage of 2nd grade students who grow one or more proficiency levels or maintain Meets or Masters from BOY to EOY on NWEA MAP in Reading will increase from XX in June 2024 to YY in June 2028.



	DNM	Approaches	Meets	Masters	TOTAL Students	TOTAL Students w/ Growth	% Students w/ Growth
Does Not Meet	2,862	810	136	40	3,848	986	9%
Approaches	542	1425	626	200	2,793	826	9%
Meets	33	327	502	383	1,487	885	9%
Masters	6	55	269	1,157	1,245	1,157	12%
TOTAL	3443	2617	1533	1780	9,373	3,854	41%

Of 9,373 2nd graders, 3,854 (41%) grew in projected achievement level (according to Domain 2A).

Note: Approx 2,000 2nd grade students who tested in Spanish do not have a projected achievement level.

Proposed GPM 1.3 Targets

Goal 1: The percent of **3rd grade** students in Houston ISD earning Meets Grade Level on the STAAR reading test will increase from 41% in June 2023 to **56%** in June 2028.

GPM 1.3: The percentage of **2nd grade** students who grow one or more proficiency levels or maintain Meets or Masters from BOY to EOY on NWEA MAP in Reading will increase from 41% in June 2024 to 56% in June 2028.

	2023-24	2024-25	2025-26	2026-27	2027-28
3 rd grade: STAAR Achievement	40% Actual 42% Target	44%	49%	53%	56%
2 nd grade: MAP – growth in proficiency	41% (Actual)	46%	50%	53%	56%

Proposed GPM 1.3 Targets: Rationale

GPM 1.3: The percentage of 2nd grade students who grow one or more proficiency levels or maintain Meets or Masters from BOY to EOY on NWEA MAP in Reading will increase from 41% in June 2024 to 56% in June 2028.

	2023-24	2024-25	2025-26	2026-27	2027-28
3 rd grade: STAAR Achievement	40% Actual 42% Target	44%	49%	53%	56%
2 nd grade: MAP – growth in proficiency	41%	46%	50%	53%	56%

The growth targets set for 3rd grade—5 pt growth in SY25-26, 4 pts in SY26-27, and 3 pts in SY27-28—will be mirrored for 2nd grade with a one-year lag to ensure students achieve necessary growth before entering 3rd grade.

Pause Point

- Reminder of LSG Guidelines
 - Challenge the organization
 - Require adult behavior change
 - Are influenceable by the Superintendent
 - Are predictive of their respective student outcome goals

What clarifying questions do you have?

Is there alignment with this recommendation?

Goal 2 Recap

Metric #	Current Metric	Proposed Change	Status										
Goal 2	The percent of 3rd grade students in Houston ISD earning Meets Grade Level on the STAAR math test will increase from 38% in June 2023 to 53% in June 2028.	No Change	No Action Needed										
2.1	The percentage of all 3rd graders projected at Meets Grade Level on NWEA MAP in math will increase from 24% in September 2023 to 39% in May 2028.	No metric change Adjusted Targets <table><tr><th>Baseline (2024)</th><th>2025</th><th>2026</th><th>2027</th><th>2028</th></tr><tr><td>39%</td><td>41%</td><td>44%</td><td>48%</td><td>53%</td></tr></table>	Baseline (2024)	2025	2026	2027	2028	39%	41%	44%	48%	53%	Recommended for Full Board Review
Baseline (2024)	2025	2026	2027	2028									
39%	41%	44%	48%	53%									
2.2	The percentage of 3rd grade students attending NES or NES-A campuses projected at Meets GL on NWEA MAP in math will increase from 12% in September 2023 to 32% in May 2028.	No metric change Adjusted Targets <table><tr><th>Baseline (2024)</th><th>2025</th><th>2026</th><th>2027</th><th>2028</th></tr><tr><td>34%</td><td>36%</td><td>39%</td><td>42%</td><td>46%</td></tr></table>	Baseline (2024)	2025	2026	2027	2028	34%	36%	39%	42%	46%	Recommended for Full Board Review
Baseline (2024)	2025	2026	2027	2028									
34%	36%	39%	42%	46%									
2.3	The percentage of 3rd grade students that have a CGI of .6 or higher on the NWEA MAP in math will increase from 40% in January 2024 to 55% in May 2028.	The percentage of 2nd grade students who grow one or more proficiency levels or maintain Meets or Masters from BOY to EOY on NWEA MAP in Math will increase from XX in June 2024 to YY in June 2028.	Recommended for Full Board Review										

GPM 2.1: New Targets

GPM 2.1: The percentage of all 3rd graders projected at Meets Grade Level on NWEA MAP in math will increase from **24%** in September 2023 to **39%** in May 2028.

Goal 2: The percent of 3rd grade students in Houston ISD earning Meets Grade Level on the STAAR math test will increase from 38% in June 2023 to **53%** in June 2028.

Language	No Change	Targets	Adjustment Recommended
----------	-----------	---------	------------------------

- EOY 2024 = 39%, which met initial 5-year target
- New 2028 target aligns with 2028 target of 53% for Goal 2 (*unchanged*)

New Targets

Baseline (2024)	2025	2026	2027	2028
39%	41%	44%	48%	53%

GPM 2.2: New Targets

GPM 2.2: The percentage of all 3rd graders projected at Meets Grade Level at NES or ~~NES-A~~ campuses on NWEA MAP in math will increase from **12%** in September 2023 to **32%** in May 2028.

Goal 2: The percent of 3rd grade students in Houston ISD earning Meets Grade Level on the STAAR math test will increase from 38% in June 2023 to **53%** in June 2028.

Language	No Change	Targets	Adjustment Recommended
----------	-----------	---------	------------------------

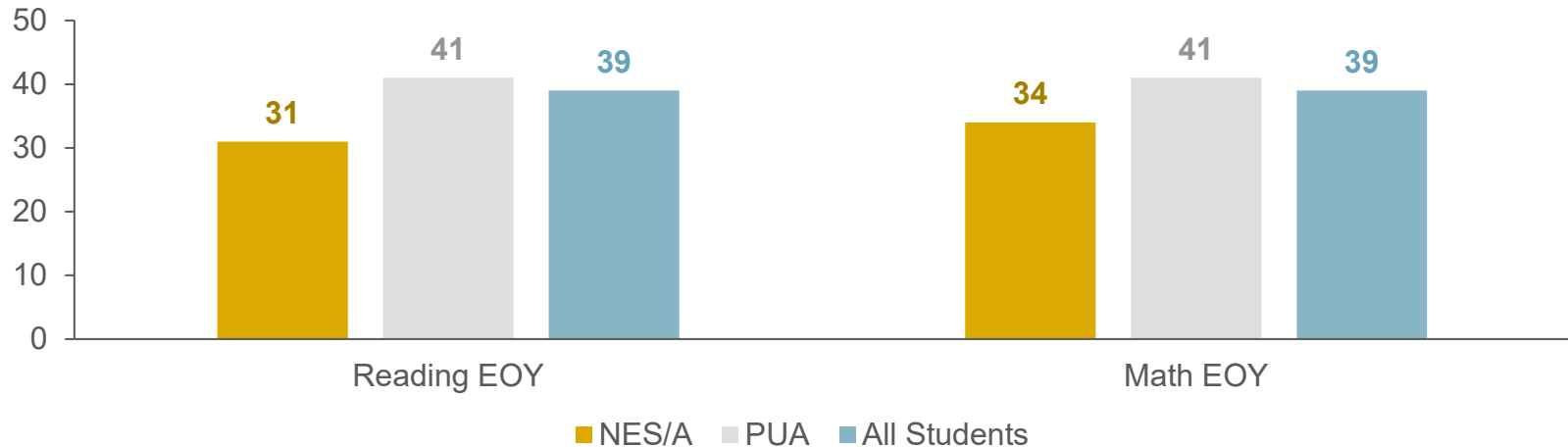
- EOY 2024 = 34%, which exceeded initial 5-year target
- Given NES campuses started with significantly lower achievement, the 2028 goal of 46% is both appropriate and strategic for this smaller subset of students.

New Targets

Baseline (2024)	2025	2026	2027	2028
34%	36%	39%	42%	46%

Rationale: PUA Projected Meets

23-24 Projected Meets GL



PUA campuses outperform NES/A campuses and all-student averages. Setting a 46% goal for NES/A campuses addresses baseline disparities, prioritizing additional resources and interventions to close the gap and ensure progress for all groups.

Proposal: Projected Achievement Level Growth

Definition: Occurs when a student demonstrates enough growth in their performance to move from their current projected achievement band to a higher band (e.g., from Did Not Meet to Approaches or from Approaches to Meets, etc.) on NWEA MAP.

*This methodology is based on the calculation process used for Domain 2A in the Texas Accountability System.

GPM 1.3 and 2.3 Considerations

Grade Level Scope:

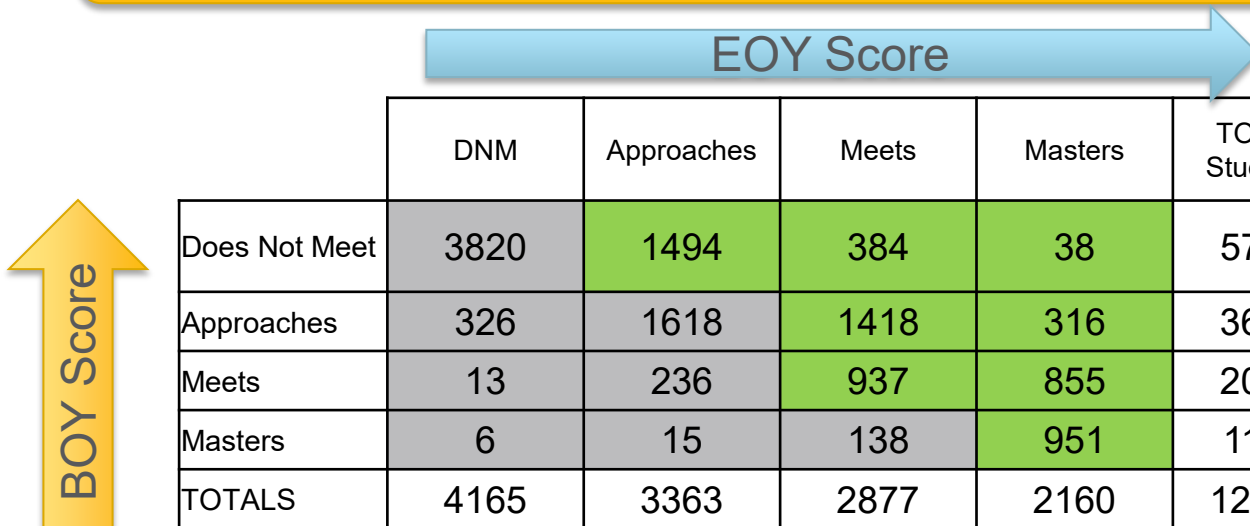
- 3rd Grade Only
- 2nd Grade Only
- 2nd -3rd Grade

Student Group Scope:

- All students who move up 1+ achievement band(s) or maintain their proficiency at or above Meets
- Students who have not yet achieved Projected Meets

Proposed GPM 2.3 – SY23-24 Data

The percentage of 2nd grade students who grow one or more proficiency levels or maintain Meets or Masters from BOY to EOY on NWEA MAP in Math will increase from 51% in June 2024 to 53% in June 2028.



	DNM	Approaches	Meets	Masters	TOTAL Students	TOTAL Students w/ Growth	% Students w/ Growth
Does Not Meet	3820	1494	384	38	5736	1,916	12%
Approaches	326	1618	1418	316	3678	1,734	14%
Meets	13	236	937	855	2041	1,792	14%
Masters	6	15	138	951	1110	951	8%
TOTALS	4165	3363	2877	2160	12565	6,393	51%

Of 12,565 2nd graders, 6,393 (51%) grew in projected achievement level (according to Domain 2A).

Proposed GPM 2.3 Targets

Goal 2: The percent of 3rd grade students in Houston ISD earning Meets Grade Level on the STAAR math test will increase from 38% in June 2023 to **53%** in June

GPM 2.3: The percentage of **2nd grade** students who grow one or more proficiency levels or maintain Meets or Masters from BOY to EOY on NWEA MAP in Math will increase from 51% in June 2024 to 55% in June 2028.

	2023-24	2024-25	2025-26	2026-27	2027-28
3 rd grade: STAAR Achievement	39% Actual 39% Target	41%	47%	51%	53%
2 nd grade: MAP – growth in proficiency	51%	52%	53%	54%	55%

Proposed GPM 2.3 Targets

GPM 2.3: The percentage of **2nd grade** students who grow one or more proficiency levels or maintain Meets or Masters from BOY to EOY on NWEA MAP in Math will increase from 51% in June 2024 to 55% in June 2028.

	2023-24	2024-25	2025-26	2026-27	2027-28
3 rd grade: STAAR Achievement	39% Actual 39% Target	41%	47%	51%	53%
2 nd grade: MAP – growth in proficiency	51%	52%	53%	54%	55%

While the 2nd grade targets are seemingly less aggressive, they are appropriate. These proposed targets allow for steady, developmental growth as students build foundational skills. The 3rd grade targets of Goal 2 are focused on achievement, designed to push students to achieve at a higher level.

Pause Point

- Reminder of LSG Guidelines
 - Challenge the organization
 - Require adult behavior change
 - Are influenceable by the Superintendent
 - Are predictive of their respective student outcome goals

What clarifying questions do you have?

Is there alignment with this recommendation?

Goal 3 Recap

Metric #	Current Metric	Proposed Change	Status
Goal 3	The percent of students graduating TSI ready and with an industry-based certification (IBC) will increase from 11% for the 2021–2022 graduates to 26% for the 2026-2027 graduates.	No Change	No Action Needed
3.1	The percent of 11th graders meeting TSI criteria on SAT, ACT, or TSIA in both math and reading will increase from 15% in May 2023 to 30% in May 2028.	No Change	No Action Needed
3.2	The percent of 10th, 11th, and 12th grade students who are on-track to achieve CTE Completer status by graduation will increase from 34% in May 2023 to 49% in May 2028.	No Change	No Action Needed
3.3	The percent of 11th graders who qualify for college credit will increase from 33% in May 2023 to 48% in May 2028.	Board decision if they keep metric	Recommend to Keep
3.4		The percentage of students in grades 4 through 8 who are projected at Meets Grade Level in reading on NWEA MAP will increase from 40% in May 2024 to 48% in May 2028.	Recommended for Full Board Review
3.5		The percentage of students in grades 4 through 8 who are projected at Meets Grade Level in math on NWEA MAP will increase from 35% in May 2024 to 43% in May 2028.	Recommended for Full Board Review

GPM 3.4: NEW

GPM 3.4: The percentage of students in grades 4 through 8 who are projected at Meets Grade Level in reading on NWEA MAP will increase from **40%** in May 2024 to **48%** in May 2028.

Goal 3: The percent of students graduating TSI ready and with an industry-based certification (IBC) will increase from 11% for the 2021–2022 graduates to **26%** for the 2026–2027 graduates.

- New targets recommended to increase 2% pts per year given:
 1. The broad focus of this metric (4-8th grade)
 2. It is an achievement metric.*

Baseline (2024)	2025	2026	2027	2028
40%	42%	44%	46%	48%

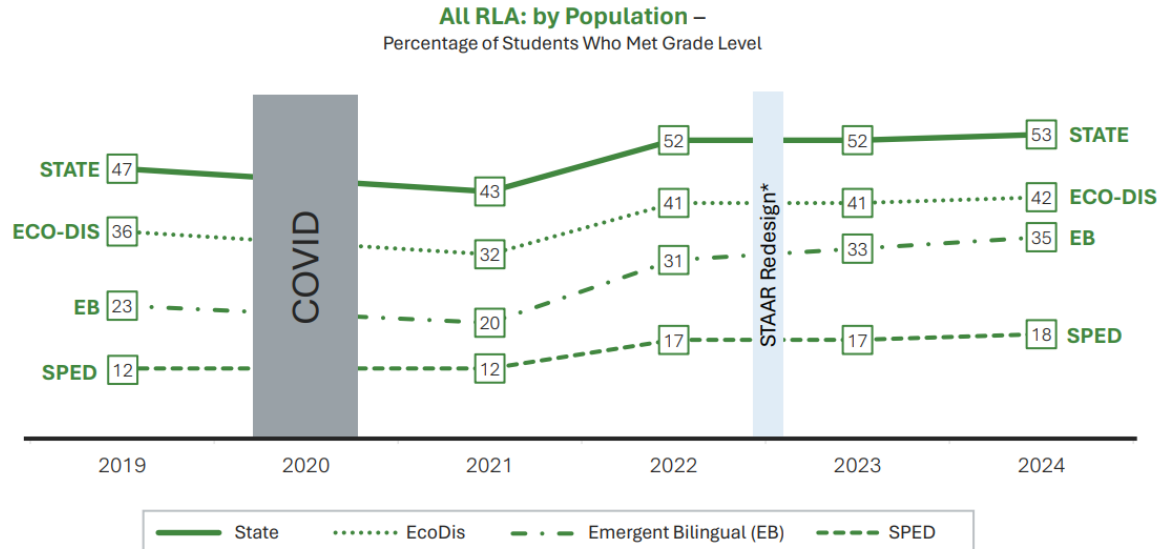
*Research indicates that achieving and sustaining annual gains beyond 1-2% in student achievement is challenging.

Source: Center for Education Policy Analysis (2022), Stanford University. "Achieving and Sustaining School Improvement." cepa.stanford.edu

Supplemental Data – State Achievement Growth: RLA



RLA – Grades 3-8 and English I & II



*In 2023, the STAAR test was redesigned to better align with classroom instruction, which necessitated re-setting of standards and scales from 2022 to 2023.

RLA annual growth for the state of Texas is approximately **3.33%**, positive but reflects recovery efforts post-COVID.

The average annual growth in RLA for the State *after* the COVID recovery period (2022 and beyond) is approximately **0.96%**.

GPM 3.5: New

GPM 3.5: The percentage of students in grades 4 through 8 who are projected at Meets Grade Level in math on NWEA MAP will increase from **35%** in May 2024 to **43%** in May 2028.

Goal 3: The percent of students graduating TSI ready and with an industry-based certification (IBC) will increase from 11% for the 2021–2022 graduates to **26%** for the 2026–2027 graduates.

- New targets recommended to increase 2% pts per year given:
 1. The broad focus of this metric (4-8th grade)
 2. It is an achievement metric.*

Baseline (2024)	2025	2026	2027	2028
35%	37%	39%	41%	43%

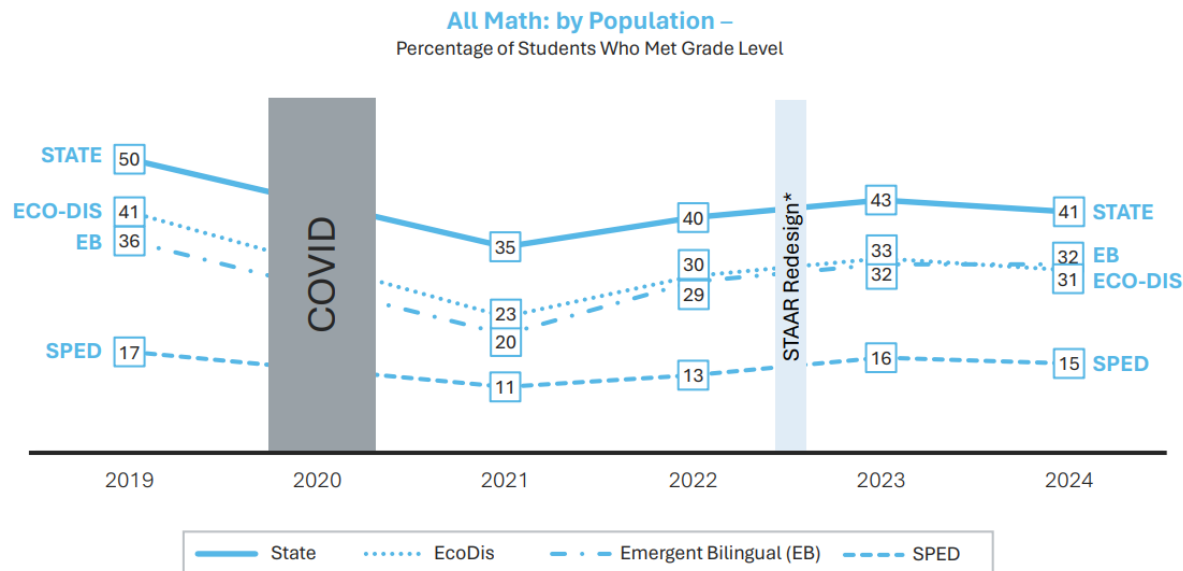
*Research indicates that achieving and sustaining annual gains beyond 1-2% in student achievement is challenging.

Source: Center for Education Policy Analysis (2022), Stanford University. "Achieving and Sustaining School Improvement." cepa.stanford.edu

Supplemental Data – State Achievement Growth: Math



Math – Grades 3-8 and Algebra I



Math annual growth for the state of Texas is approximately **-3.72%**, reflecting a slight decline over the last six years. This includes the impact of COVID-19 learning loss and recovery.

The average annual growth in Math for the State *after* the COVID recovery period (2022 and beyond) is **1.43%**.

*In 2023, the STAAR test was redesigned to better align with classroom instruction, which necessitated re-setting of standards and scales from 2022 to 2023.

Pause Point

- Reminder of LSG Guidelines
 - Challenge the organization
 - Require adult behavior change
 - Are influenceable by the Superintendent
 - Are predictive of their respective student outcome goals

What clarifying questions do you have?

Is there alignment with this recommendation?

Goal 4 Recap

Metric #	Current Metric	Proposed Change	Status
Goal 4	Students in grades 4 through 8 who receive special education services that achieve growth as measured by the Domain 2 Part A of the state accountability system will increase from 63% in August 2023 to 78% in August 2028	No Change	No Action Needed
4.1	The percentage of students in grades 4 through 8 who receive special education services that have a Conditional Growth Index (CGI) of 0.6 or higher on NWEA MAP in reading will increase from 32% in January 2024 to 47% in May 2028.	In Review	Recommended for Full Board Review
4.2	The percentage of students in grades 4 through 8 who receive special education services that have a Conditional Growth Index (CGI) of 0.6 or higher on NWEA MAP in math will increase from 30% in January 2024 to 45% in May 2028.	In Review	Recommended for Full Board Review
4.3	The percentage of students in grades 3 through 8 who receive special education services who are projected at Meets Grade Level in reading or math on NWEA MAP will increase from 11% in September 2023 to 26% in May 2028.	No Change	No Action Needed

Goal 4

Goal 4: Students in grades 4 through 8 who receive special education services that achieve growth as measured by the Domain 2 Part A of the state accountability system will increase from 63% in August 2023 to 78% in August 2028.

	2023-24	2024-25	2025-26	2026-27	2027-28
4 th -8 th :STAAR Domain 2A (Math or Reading)	66% Actual 64% <i>Target</i>	66%	72%	76%	78%

12% increase to reach goal

Current Growth Metric: CGI

4th – 8th Grade SWD

GPM 4.1

The percentage of students in grades 4 through 8 who receive special education services that have a Conditional Growth Index (CGI) of 0.6 or higher on NWEA MAP in reading will increase from 32% in January 2024 to 47% in May 2028.

GPM 4.2

The percentage of students in grades 4 through 8 who receive special education services that have a Conditional Growth Index (CGI) of 0.6 or higher on NWEA MAP in math will increase from 30% in January 2024 to 45% in May 2028.

CGI → Met Expected Growth: Why?

- Goal 4 evaluates multiple grade levels; Met Expected Growth provides a consistent, scalable measure of progress regardless of grade.
- Met Expected Growth takes into account starting RIT score, ensuring equity.
- Meeting individual growth goals is more aligned with Special Education Services model (i.e., unique needs addressed through IEPs)

Proposed GPM 4.1 – SY23-24 Data

The percentage of 4th-8th students with disabilities have Met Expected Growth from BOY to EOY on NWEA MAP in Reading will increase from 48% in June 2024 to 55% in June 2028.

Of 5,631 SWD students in 4th – 8th grades, 2,717 (48%) Met Expected Growth from BOY to EOY on MAP Reading in 2023-24 school year.

Grade	Count of SWD	% Met Expected Growth
4 th	1,453	49.21%
5 th	1,488	48.99%
6 th	914	42.12%
7 th	857	50.06%
8 th	919	49.95%
TOTAL	5,631	48.25%

Proposed GPM 4.1 Targets

GPM 4.1: The percentage of 4th-8th students with disabilities have Met Expected Growth from BOY to EOY on NWEA MAP in Reading will increase from 48% in June 2024 to 55% in June 2028.

	2023-24	2024-25	2025-26	2026-27	2027-28
4 th - 8 th : MAP – Met Expected Growth	48%	50%	52%	54%	55%

7% increase

Rationale:

- Focus on smaller, more meaningful and more sustainable improvements
- Aligns with district expectation of 55% Met Expected Growth of all students
- Lower target than overall 78% due to wording of Goal 4 (Reading OR Math)

Proposed GPM 4.2 – SY23-24 Data

The percentage of 4th-8th students with disabilities have Met Expected Growth from BOY to EOY on NWEA MAP in Math will increase from 46% in June 2024 to 58% in June 2028.

Of 5,705 SWD students in 4th-8th grades, 2,638 (46%) Met Expected Growth from BOY to EOY on MAP Math in 2023-24 school year.

Grade	Count of SWD	% Met Expected Growth
4 th	1,475	44.75%
5 th	1,514	43.92%
6 th	916	46.07%
7 th	865	50.29%
8 th	937	48.67%
TOTAL	5,707	46.22%

Proposed GPM 4.2 Targets

GPM 4.2: The percentage of 4th-8th students with disabilities have Met Expected Growth from BOY to EOY on NWEA MAP in Math will increase from 46% in June 2024 to 58% in June 2028.

	2023-24	2024-25	2025-26	2026-27	2027-28
4 th - 8 th : MAP – Met Expected Growth	46%	49%	52%	56%	58%

12% increase to reach goal

Rationale:

- Parallel growth of 12% pts over 4 years to align Goal 4 growth
- Lower target than overall 78% due to wording of Goal 4 (Reading OR Math)

4.1 & 4.2 Targets: Considerations

“Typical” Met
Expected Growth
Target Range:
50-60%

Disability Type &
Severity

IEPs Are Not
Considered by
MAP

TEA Domain 3
Growth
Expectations

Pause Point

- Reminder of LSG Guidelines
 - Challenge the organization
 - Require adult behavior change
 - Are influenceable by the Superintendent
 - Are predictive of their respective student outcome goals

What clarifying questions do you have?

Is there alignment with this recommendation?

Goals 1,2 & 4 GPM Commitments

Transparency

- While trend data is not yet available, we believe the selected metrics provide a clearer measure of student progress and offer actionable insights for instruction.

Data-Driven Adjustments

- We stand by proposed metrics, methodology and assumptions, but are prepared to adjust targets as more data becomes available. This commitment is reflected in our recommended target increases for GPMs 2.1 and 2.2, where we have already exceeded our long-term target.

Features of Calendar 1

- Focuses on timely data reporting
- Prioritizes **a more comprehensive and streamlined data delivery process**
- Two months have no monitoring report scheduled
- Moves some reports to better align with data availability (e.g. 3.1 – TSI readiness)
- Constraints reported 1x per year

BOY	Goal 1	Constraint
MOY	Goal 2	
EOY	Goal 3	
	Goal 4	

Annual Proposed Calendar Option 1

Month	Goal/ GPM	Subject	Data Source	Reporting Period
October	Goal 3.2	CCMR - CTE Completer	Summer PEIMS	EOY/BOY (for previous year due to delay in data)
November	GPM 1.1 & 1.2	Reading 3 rd grade	NWEA MAP	BOY
	GPM 2.1 & 2.2	Math 3 rd grade	NWEA MAP	BOY
December	GPM 4.3	SWD Reading or Math 3 rd – 8 th	NWEA MAP	BOY
January	No report given MOY data not yet available			
February	GPM 3.3	CCMR - College Credit	College Board, HCC	MOY
March	Goal 1- ALL GPMs	Reading 3 rd grade	NWEA MAP	MOY
	Goal 2- ALL GPMs	Math 3 rd grade	NWEA MAP	MOY
April	GPM 4.1 & 4.2	SWD	NWEA MAP	MOY
	GPM 3.4 & 3.5	Reading & Math 4 th - 8 th	NWEA MAP	MOY
May				
June	GPM 4.1 & 4.2	SWD	NWEA MAP	MOY
	GPM 3.1	CCMR – TSI	College Board	MOY
	Constraint 3.1	Specialized Programming	OOA	EOY
July	No Meeting			
August	Goal 1	Reading 3 rd grade	STAAR	EOY
	Goal 2	Math 3 rd grade	STAAR	EOY
Sept	Goal 4	SWD	STAAR Accountability	EOY
	GPM 3.4 & 3.5	MAP – 4 th – 8 th	NWEA MAP	
	Constraint 2.1 & 2.2	SPED Compliance	SPED Audits	EOY
	Constraint 1.1	Campus ratings (D/F)	Accountability	EOY
	Constraint 1.3	CCMR	Accountability	EOY (previous year graduates)

Features of Calendar 2

- Similar considerations taken for Option 1. Only two main differences:
 - Add a second MOY report for Goal 1 and 2 to meet **the LSG requirements** of reporting each goal 4x per year
 - However, it limits how quickly we can report out on MOY data may be repetitive in findings and monitoring actions
 - Change reduces no monitoring months from two to one

Annual Proposed Calendar Option 2

BOY	Goal 1	Constraint
MOY	Goal 2	
EOY	Goal 3	
	Goal 4	

Month	Goal/ GPM/ CPM	Subject	Data Source	Reporting Period
October	GPM 3.2	CCM - CTE Completer	Summer PEIMS	BOY
November	GPM 1.1 & 1.2	Reading 3 rd Grade	NWEA MAP	BOY
	GPM 2.1 & 2.2	Math 3 rd Grade	NWEA MAP	BOY
December	GPM 4.3	SWD Reading or Math 3 rd – 8 th	NWEA MAP	BOY
January	No report given MOY data not yet available			
February	GPM 3.3	CCMR - College Credit	College Board, HCC	BOY / MOY
March	GPM 1.1 & 1.2	Reading 3 rd Grade	NWEA MAP	MOY
	GPM 2.1 & 2.2	Math 3 rd Grade	NWEA MAP	MOY
April	GPM 1.3	Reading 3 rd Grade (Growth)	NWEA MAP	MOY
	GPM 2.3	Math 3 rd Grade (Growth)	NWEA MAP	MOY
May	GPM 4.1 & 4.2	SWD Reading/ Math 4 th – 8 th (Growth)	NWEA MAP	MOY
June	GPM 3.4 & 3.5	Reading & Math 4 th -8 th	NWEA MAP	MOY
	3.1	CCMR – TSI Success	College Board	BOY / MOY
	GPM 4.3	SWD Reading or Math 3 rd – 8 th	NWEA MAP	MOY / EOY
	Constraint 3.1	Specialized Programming	OOA	EOY
July	No Meeting			
August	Goal 1	Reading 3 rd grade	STAAR	EOY
	Goal 2	Math 3 rd grade	STAAR	EOY
September	Goal 4	SWD	STAAR Accountability	EOY
	Goal 3	CCMR	Accountability	EOY
	Constraint 2.1 & 2.2	SPED Compliance	SPED Audits	EOY
	Constraint 1.1	Campus ratings (D/F)	Accountability	EOY
	Constraint 1.3	CCMR	Accountability	EOY

Current Calendar

Houston ISD TEA Lone Star Governance Monitoring Calendar: 2024 - 2028						
Month	Goal/ GPM	Subject	Data Source	Data Available	Students	Description
October	3.1	CCMR	College Board	9/1	11th	TSI Success - BOY
	3.2	CCMR	PDM File	9/15	10th, 11th, 12th	CTE Completer Status - BOY
November	1.1	Reading	NWEA MAP	9/30	3rd	Reading - Meets GL - BOY
	2.1	Math	NWEA MAP	9/30	3rd	Math - Meets GL- BOY
December	4.3	SPED	NWEA MAP	1/31	3rd- 8th	SPED - Meets GL - BOY
January	3.3	CCMR	College Board, HCC	1/30	11th	College Credit - BOY
February	3.2	CCMR	PDM File	9/15	10th, 11th, 12th	CTE Completer Status - MOY
	3.3	CCMR	College Board, HCC	1/30	11th	College Credit MOY
March	1.2	Reading	NWEA MAP	1/31	3rd	Reading - Meets GL NES/A - MOY
	2.2	Math	NWEA MAP	1/31	3rd	Math - Meets GL NES/A - MOY
April	4.3	SPED	NWEA MAP	1/31	3rd- 8th	SPED - Meets GL - MOY
	CPM 2.1 & 2.2					SPED compliance - 1st semester
	3.1	CCMR	College Board	1/30	11th	TSI Success - MOY
May	4.1	SPED	NWEA MAP	5/25	4th-8th	SPED - MAP Growth - Reading
	4.2	SPED	NWEA MAP	5/25	4th-8th	SPED - MAP Growth- Math
June	1.3	Reading	NWEA MAP	5/25	3rd	Reading - MAP Growth - MOY/EOY
	2.3	Math	NWEA MAP	5/25	3rd	Math - MAP Growth - MOY/EOY
	CPM 3.1					Campus Specialized Programming
July	No Meeting					
August	Goal 1	Reading	STAAR	6/30	3rd	Meets GL
	Goal 2	Math	STAAR	6/30	3rd	Meets GL
	CPM 2.1 & 2.2					OSES compliance - full prior year
September	Goal 3	CCMR	Accountability	8/15	lagging by one year	TSI Ready with IBC
	Goal 4	SPED	STAAR Accountability	8/15	4th-8th	Growth in 2A
	CPM 1.1 & 1.2					MAP Growth - D&F rated
	CPM 1.3					CCMR Points, Class of 2023

Thank you

