



Coffee with the Principal

Title 1 Parent Meeting

September 6, 2024

A red rectangular sign for the Wharton Dual Language Academy is the central focus. The sign has the word 'WHARTON' in large, white, serif capital letters, and 'DUAL LANGUAGE ACADEMY' in smaller, white, sans-serif capital letters below it. The background of the image shows a city skyline with various skyscrapers and a body of water, with some greenery and residential buildings in the foreground to the left.

Let's Celebrate!

“A” Campus Rating

-

Great Teachers and Great Students!

Agenda

- ★ Mission Statement
- ★ HISD Core Values
- ★ Campus Action Plan
- ★ Title 1 Status
- ★ Safety
- ★ Attendance
- ★ IB PYP @ WDLA
- ★ Communication
- ★ Testing
- ★ HISD Connect
- ★ PTO



Mission Statement

Wharton Dual Language Academy's mission is to empower our students to become respectful, life-long, bilingual and bi-literate inquirers who celebrate diversity as responsible citizens of the world.



Meet the Leadership



**Veronica
Celedon
Principal**



**Syreeta Lazarus
Campus Leader
Elementary**








**Amber Akhtar
Campus Leader
Middle School**



**Ana Silva
Curriculum and
Instructional
Coordinator**

Core Values

Valores Fundamentales

 <p>Core Value #1</p> <p>All students can learn and reach his or her potential</p>	 <p>Core Value #2</p> <p>Effective teachers make the most difference in student academic performance</p>	 <p>Core Value #3</p> <p>For every child to succeed, we must hold students and ourselves to high expectations</p>
 <p>WE BELIEVE</p>		
 <p>Core Value #4</p> <p>We value parent engagement and community support</p>	 <p>Core Value #5</p> <p>We rely on clearly defined outcomes to guide our work and to which we hold ourselves accountable</p>	 <p>Core Value #6</p> <p>We value equity and commit to reducing inequities inherent in the education system.</p>

Campus Action Plan

Key Action	Indicator of Success
Grow staff capacity to provide the highest quality instruction around the framework of Wharton Dual Language and IB characteristics.	<ul style="list-style-type: none">80% of the teachers will be proficient or higher in the delivery of high-quality instruction as measured by Dimension 2.1 through 2.5 (Instruction) of the T-TESS rubric. [The Principal and Assistant Principal will evaluate all teachers using the HISD evaluation system.]
The principal ensures IEPs are written effectively, staff are provided relevant portions of the IEP, and accommodations/modifications are documented in PowerSchool.	<ul style="list-style-type: none">By the end of the 2024-2025 school year, the principal will ensure that 100% of IEPs include specific, clear, and measurable goals tailored to each student's unique needs, as verified through random quarterly reviews.

Campus Action Plan

Key Action	Indicator of Success
Campus improves English proficiency for Emergent Bilingual students.	<ul style="list-style-type: none">• NWEA MAP: By June 2025, 60% of Emergent Bilingual students will meet their individual growth target on 2-8 NWEA MAP Reading.• By May 2025, 60% of EB teachers will score 8/10 or higher in Domain II (Monitor & Adjust and Engage & Deliver) of the spot, as measured by the monthly average spot score for the second semester.
Improve reading proficiency in K-8 th	<ul style="list-style-type: none">• The percentage of 2nd -8th grade students in our campus who have a Conditional Growth Index (CGI) of 0.6 or higher on NWEA MAP in reading will increase from 56% in May 2024 to 60% in May 2025.• In the 2024-2025 school year, there will be an increase from 38% to 48% of the students in grades 3-8th will reach mastery level.

Title 1 Status

TITLE I, PART A

The purpose of Title I, Part A is to help ensure that all children meet challenging state academic standards, regardless of economic status. Title I is the government's attempt to provide all children with the opportunity to receive a fair, equitable, and high-quality education, and to close the achievement gap.

ESSA divides Title I into five parts:

- Improving Basic Programs Operated by Local Education Agencies (LEAs)
- State Assessment Grants
- Education of Migrant Children
- Prevention & Intervention Programs for Children and Youth Who are Neglected, Delinquent, or At-Risk
- Flexibility for Equitable Per-Pupil Funding

[2024-2025 Title I Campuses](#)

[2024-2025 Title I, Part A Program Handbook](#) ok

Safety



- ★ Student arrival:
 - Gates open: 8:15 School Doors: open: 8:20 Gates Close: 8:35
 - At 8:35, please enter through the main office (red zone) for a tardy pass.
- ★ Student dismissal:
 - Gates open: 3:45 Dismissal starts: 3:55 Late pickup: 4:15
- ★ All visitors must sign in the front office.
- ★ Parent Conferences: Teachers will pick up parents or guardians in the front office
- ★ Heat Advisory Email from Nurse D'Arcy - Indoor recess on these days

Attendance: Why it Matters

- **Academic Success:** Regular attendance is crucial for academic achievement.
- **Lost Opportunities:** Absences result in lost instructional time and missed opportunities to learn and engage.
- **Attendance Impact:** Both excused/unexcused absences and truancies can affect academic performance.
- **School Funding:** Each student absence results in less funds received per day.

Attendance: 90% Rule

Attendance for Credit 90% Rule

- **Requirement:** Students must attend 90% of class days to receive credit or a final grade.
- **Applies to All Grades**

Please visit HISD's Attendance Policy Page:

<https://www.houstonisd.org/Page/196162>



Attendance: Parental Responsibilities

- ★ **Communication:** If your child is absent, late, or leaves early, inform the school via letter, email, or phone call.
- ★ **Medical Documentation:** Provide a doctor's note if your child was ill and needed medical attention
- ★ **Uncertain About Illness?** Contact the Campus Nurse or Attendance Clerk for guidance.
- ★ **Extended Absences:** If your child is absent for more than three days, contact the campus as soon as possible; medical verification may be required.

IB PYP at WDLA

- Inquirers
- Knowledgeable
- Thinkers
- Communicators
- Principled
- Open-minded
- Risk-takers
- Balanced
- (Reflective)



The graphic features a silhouette of a person's head in profile, facing right. The interior of the head is filled with a word cloud of IB learner profile attributes. To the right of the head is a circular logo with the text 'THE IB LEARNER PROFILE' and a smaller silhouette of a head. Below the graphic is a dark blue section with white text.

IB learner profile

The aim of all IB programmes is to develop internationally minded people who, recognizing their common humanity and shared guardianship of the planet, help to create a better and more peaceful world.

As IB learners we strive to be:

INQUIRERS We nurture our curiosity, developing skills for inquiry and research. We know how to learn independently and with others. We learn with enthusiasm and sustain our love of learning throughout life.	OPEN-MINDED We critically appreciate our own cultures and personal histories, as well as the values and traditions of others. We seek and evaluate a range of points of view, and we are willing to grow from the experience.
KNOWLEDGEABLE We develop and use conceptual understanding, exploring knowledge across a range of disciplines. We engage with issues and ideas that have local and global significance.	CARING We show empathy, compassion and respect. We have a commitment to service, and we act to make a positive difference in the lives of others and in the world around us.
THINKERS We use critical and creative thinking skills to analyse and take responsible action on complex problems. We exercise initiative in making reasoned, ethical decisions.	RISK-TAKERS We approach uncertainty with forethought and determination; we work independently and cooperatively to explore new ideas and innovative strategies. We are resourceful and resilient in the face of challenges and change.
COMMUNICATORS We express ourselves confidently and creatively in more than one language and in many ways. We collaborate effectively, listening carefully to the perspectives of other individuals and groups.	BALANCED We understand the importance of balancing different aspects of our lives—intellectual, physical, and emotional—to achieve well-being for ourselves and others. We recognize our interdependence with other people and with the world in which we live.
PRINCIPLED We act with integrity and honesty, with a strong sense of fairness and justice, and with respect for the dignity and rights of people everywhere. We take responsibility for our actions and their consequences.	REFLECTIVE We thoughtfully consider the world and our own ideas and experiences. We work to understand our strengths and weaknesses in order to support our learning and personal development.

The IB learner profile represents 10 attributes valued by IB World Schools. We believe these attributes, and others like them, can help individuals and groups become responsible members of local, national and global communities.

 International Baccalaureate®
Baccalauréat International®
Bachillerato Internacional®

© International Baccalaureate Organization 2013
International Baccalaureate® | Baccalauréat International® | Bachillerato Internacional®

IB PYP through Residencies

We ensure that our teaching aligns with the TEKS while using **IB PYP's inquiry-based approach** to foster critical thinking, creativity, and meaningful connections between subjects.

[IB PYP FAQ](#)

PK & K	Prelude
1	Alley Theater (Science Residency)
2	WITS Creative Bilingual
3	WITS Creative Bilingual
4 & 5	Alley Theater (Science Residency)
6	Alley Theater (Spanish Residency)
7	WITS Performance
8	Take the Stage

Communication

Elementary School

Email

Toddle App

- ★ Ensure you receive the family invite code
 - ★ Returning Wharton Families- Use the same application as last year.
- Parent Teacher Conferences

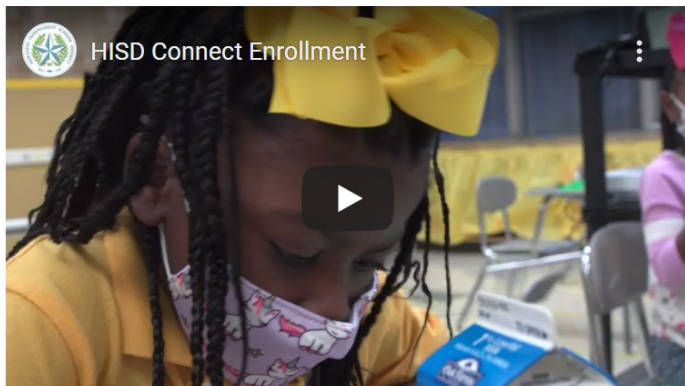
Middle School

Email

Remind App

- ★ Ensure you receive the family invite code
- Parent Teacher Conferences

HISD Connect



HOW-TO VIDEOS

Getting Started with HISD Connect Parent Portal

How to create your account and associate your student's information

Completing Forms in HISD Connect Parent Portal

How to navigate to and complete forms after you are logged in to Parent Portal

Student Verification in HISD Connect Parent Portal

How to complete the Student Verification steps after you are logged in to Parent Portal.

HISD Connect Parent Portal: A Complete Guide

How to create your account, associate your students information, complete forms and complete Student Verification in Parent Portal



[How to access HISD Connect](#)

GT Testing Request Link

- ★ Request by September 16th
- ★ Universal Screener for 2nd grade students
 - Ensure that you fill out the language survey



GIFTED AND TALENTED TESTING

If your student is Entering Kindergarten for the 2025-2026 school year and applying for enrollment at a Vanguard Magnet campus, testing can be requested now. Additionally, if your student is currently in grades K-12 and seeking Gifted and Talented identification or attending a school that mandates it for admission, testing may also be requested at this time.

Tests can be requested starting August 3rd for the following:

- Zoned HISD students Entering Kindergarten for the 2025-2026 School Year for enrollment in Vanguard Magnet Campuses
- Zoned HISD students enrolled in grades K-12 seeking Gifted and Talented Identification

Scan the QR code OR click the link below:



GT Test Request Link
<https://bit.ly/3Sx10XB>

Please note that parents and families of second grade students or students who have previously been identified as Gifted and Talented in both math and reading do not need to request additional testing.

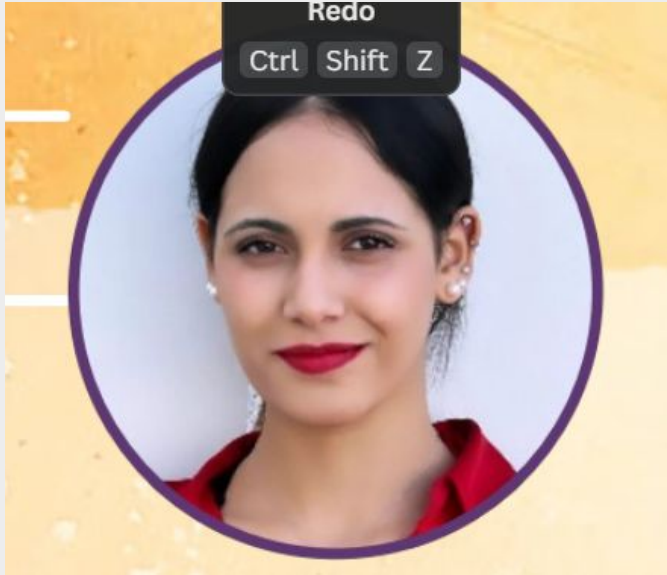
DEADLINE: MONDAY, SEPTEMBER 16

 GiftedandTalented@houstonisd.org

Library

- ★ Storytime and Lessons: Mr. Natividad's lesson plans include a story read aloud and a presentation on library processes.
- ★ Students are allowed to check out 2 books per week which are due 2 weeks after check out.
 - This year, we have already checked out over 500 books!
- ★ Special Programs: Organize events such as author visits or themed reading challenges to encourage library use. For example: Scholastic Book Fairs (Fall & Spring) and AstroBus visit during Dr. Seuss's Birthday to give free books to students.
- ★ Classroom Library

International Spanish Academy



We're excited to welcome Ms. Kaoutar Najim Ech Chatoui as our ISA Language and Culture Assistant.



Upcoming Events

- ★ Progress Report 1
 - Monday, September 9th
- ★ Grandparents Day Lunch
 - Thursday, September 12th → PK, 1st, 3rd, 5th
 - Friday, September 13th → K, 2nd, 4th, MS
- ★ Celebrating Hispanic Heritage Month
 - September 15th - October 15th
- ★ Student Holidays
 - October 3rd: Staff PD
 - October 4th: Fall Holiday

Mark Your Calendars / Marca tu calendario

September 19



September 25

General PTO Meeting @ Boheme

September 30 - October 11



October 18-20



November 2





WDLA|PTO

Wharton Dual Language Academy PTO

SINCE JULY 2024 WE'VE FUNDED...

15

Teacher Classroom
Supplies
Reimbursements

2

Community Social
Events

8

Staff & Teacher
Appreciation Meals
& or Sunshine Cart

1

Teacher
Professional
Development Grant

6

Grades' Educational
Enrichment
Programs

IB Fees &
Technology

3

Grades' Office
Supplies

Operating Expenses

2024-2025 FUND OUR PATH TO SUCCESS

Goal: \$300,000
(Approximately \$415 per student)

At Wharton, we believe in the power of **community** to **create extraordinary opportunities** for our **students, faculty, & staff**.
With your generous support, **juntos**, we can **make a difference!**

HOW WE'LL GET THERE: 2* Fundraisers + Other Efforts

*Number of fundraisers depends on proximity to goal after Fall Fundraising effort

Direct Donations + Sales



70%

Business Sponsorships



25%

Company Matches



5%

FUND OUR PATH TO SUCCESS



WDLA PTO
Wharton Dual Language Academy PTO

WDLA FALL FUNDRAISER

- Intro
- Eagle 2024 Olympics
- Goal & Benefits
- Campaign & Changes
- Opening Ceremony
- Questions: @whartonpto.org

EAGLE 2024 OLYMPICS

OLYMPIC EVENT
EVENTO OLÍMPICO

OCT. 11

[Play Video](#)



GOAL & BENEFITS

- Total Campaign Goal: \$125,000

(From Parents, Friends, Family & Community)

- Student Goal: \$200

(Aiming for \$415, the Average **Annual** student s



International Baccalaureate®
Baccalauréat International
Bachillerato Internacional

WHERE DO WDLA PTO FUNDS GO?



IB CERTIFICATION
& TRAINING



TECHNOLOGY
RESOURCES



FIELD TRIPS



MUSIC
RESOURCES



SCHOOL
IMPROVEMENT



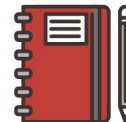
EDUCATIONAL
ENRICHMENT
PROGRAMS



FACULTY & STAFF
APPRECIATION



SCIENCE LAB



CLASSROOM
SUPPORT





CAMPAIGN & CHANGES

- Program changes
 - Whartonpto.org (not Boosterthon)
 - Register & update teacher and t-shirt size
 - Prizes purchased by PTO
- Dates:
 - 9/6 Kickoff, Olympics Opening Ceremony
 - **9/20 Registration promotion deadline**
 - 9/30-10/11 Start distributing prizes
 - **10/11 Olympics Event**
 - 9/26- 10/18 Milestone/Class celebrations

Eagle 2024 Olympics Opening Ceremony

[Play Song](#)



WHARTON DLA

EAGLE 2024 OLYMPICS

TOTAL GOAL: \$125,000



**Let's get it
started!!**

<https://whartonpto.membershiptoolkit.com/eagle2024olympics>





THANK YOU!