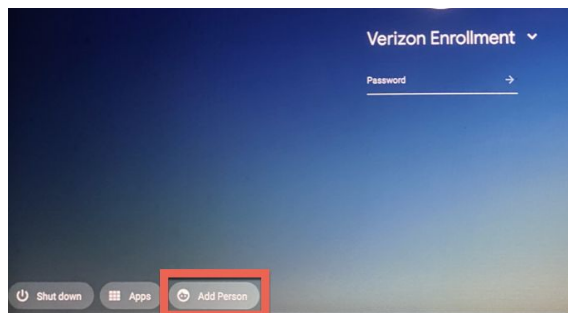


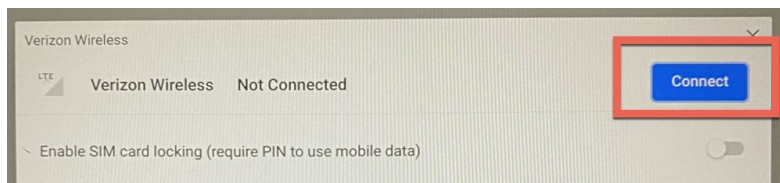
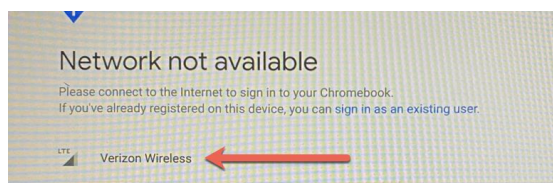
# Logging into the Chromebook & Connecting to WiFi

## 1. Select Add Person.

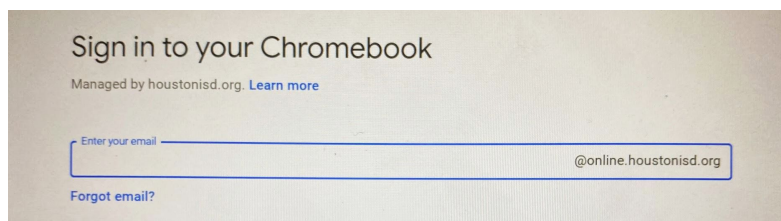


## 2. Select Verizon and connect.

If on campus, connect to HISD Guest.



## 3. Enter "s" followed by the student's ID number. Example: s1234567

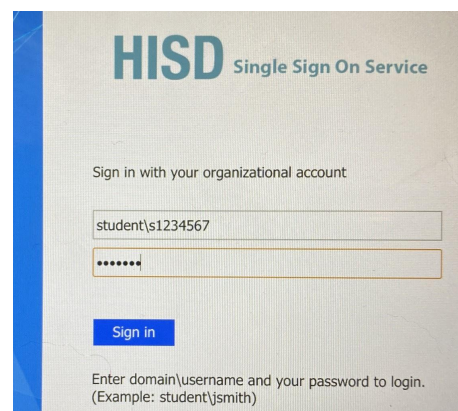


## 4. In the first box, type "student\s" followed by student ID.

Students can also enter their email address:

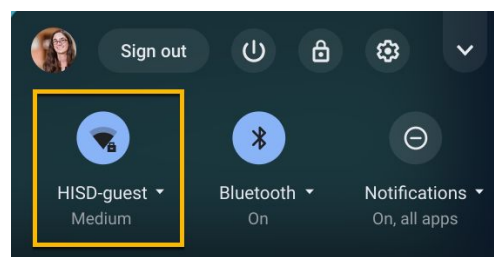
**s#####@online.houstonisd.org.**

In the second box, enter the **student's birthday in MMDDYYYY.**



## Connecting the Chromebook to WiFi

1. At the bottom right, select the time.
2. Select not connected or click on the drop-down menu to see all the available networks.
3. Connect to your home WiFi network, HISD Guest, or the Verizon LTE if you don't have access to WiFi.



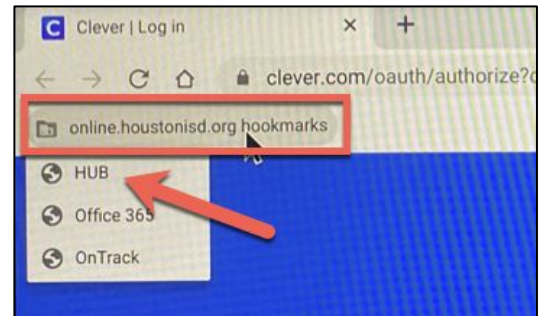
# Getting to the HUB, Teams, & OnTrack

## Online.houstonisd.org Bookmarks

Students should use the built in bookmark folder to access the HUB, Teams, and OnTrack.

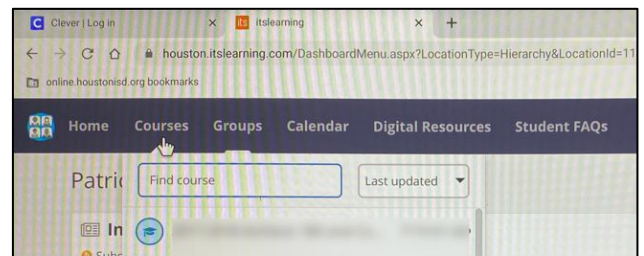
Los estudiantes deben usar la carpeta de marcadores incorporada para acceder a HUB, Teams y OnTrack.

- Click on “online.houstonisd.org bookmarks” and choose HUB, Office 365, or OnTrack.
- Haga clic en online.houstonisd.org y seleccione HUB, Office 365, o OnTrack.



## Getting to Classes in the HUB

- Click on Courses to see all of your classes. These should be the same as your schedule.
- Hacer clic en “Courses” para ver su horario que va ser lo mismo que su horario.



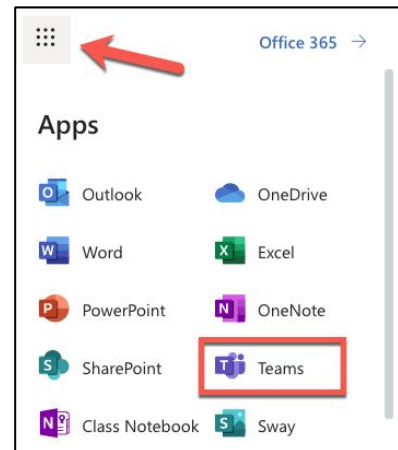
## Getting to Teams

Open Office 365 from the bookmark.

Select the waffle icon to view all apps and choose Teams.

Abra Office 365 desde el marcador.

Seleccione el icono de waffle para ver todas las aplicaciones y elija Teams.



## Logging into OnTrack from the Bookmark

Open OnTrack from the bookmark.

Student username: **s#####**

Student password: **ID number (do NOT type 's')**

Abra OnTrack desde el marcador.

Nombre de usuario del estudiante: **s #####**

Contraseña del estudiante: **Número de identificación (NO escriba "s")**

