

## MEMORANDUM

October 1, 2013

TO: Board Members

FROM: Terry B. Grier, Ed. D.  
Superintendent of Schools

CONTACT: Carla Stevens, (713) 556-6700

SUBJECT: **COLLEGE ENROLLMENT OF HISD GRADUATES – NATIONAL STUDENT CLEARINGHOUSE DATA**

This report provides an analysis of the data available from the National Student Clearinghouse (NSC) based on the August 15, 2013 snapshot that includes historical information of the college enrollment in the fall immediately following graduation and within one year of graduation from HISD high schools during the period 2005-2012. District-level results are disaggregated by ethnic groups, gender, and socio-economic status. Campus-level summaries are included in **Appendix A**.

### **National Student Clearinghouse Data**

In 2009, HISD started a subscription to the StudentTracker<sup>SM</sup> service offered by the National Student Clearinghouse (NSC), a non-profit organization that is the nation's largest source for secondary and post-secondary student degree, diploma and enrollment verification. Previously, HISD relied exclusively on the annual reporting of the college enrollment of high school graduates in higher education institutions provided by the Texas Higher Education Coordinating Board (THECB). Unfortunately, the THECB data suffers from several drawbacks:

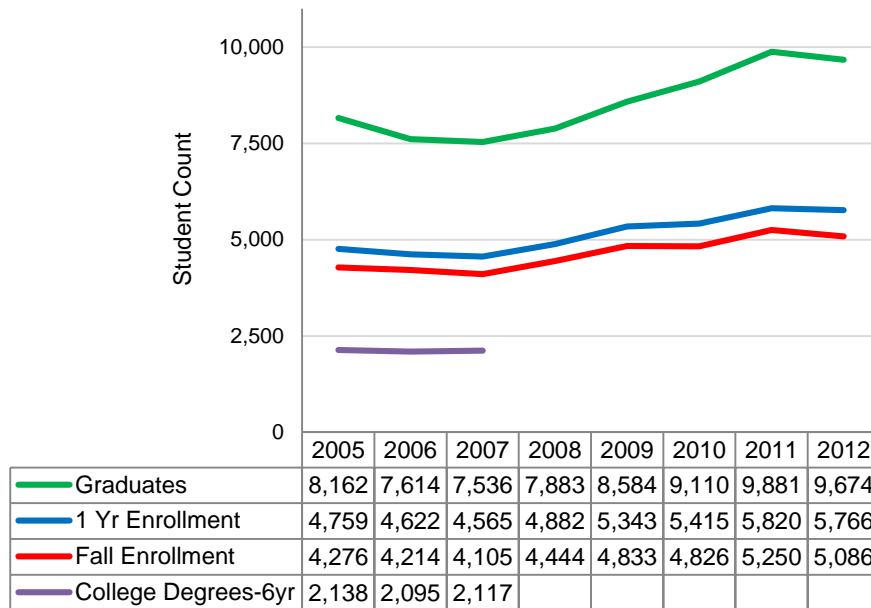
- tracks only enrollment in Texas institutions
- relies heavily on student social security numbers and other PEIMS data for matching purposes that fails to track the enrollment of undocumented students
- does not track enrollment beyond the fall immediately following student graduation

StudentTracker<sup>SM</sup> data enables administrators in school districts to access the NSC records on over 137 million students, which represent postsecondary enrollments and achievements nationwide. NSC maintains records on behalf of more than 3,500 public and private colleges and universities that enroll over 98 percent of the students in higher education. These institutions have authorized NSC to provide this information to high schools and school districts in order to help them improve their educational programs. However, it should be noted that while StudentTracker<sup>SM</sup> offers vastly improved data quality compared to the THECB results, not all graduates are found through this service, and the results therefore represent the best estimates of college-enrollment of the high school graduates.

### **NSC Results**

**Figure 1** shows the total number of HISD graduates and the number enrolled in college in the fall and within one year after graduation for the period 2005-2012. The number of high school graduates increased by 1,512 in 2012 compared to 2005 (18.5%), while the number of high school graduates enrolled in college based on the fall data increased by 810 (18.9%) during the same period. Approximately 680 additional graduates in the class of 2012 enrolled in college after the fall enrollment, i.e., during the following spring and summer. Approximately 2,100 college degrees were awarded within six years after graduation from high school for the class of 2005, 2006, and 2007.

**Figure 1. Number of Graduates, College Enrollment in Fall and within 1 Year after Graduation, and College Degrees within 6 years after Graduation**  
*August 15, 2013 snapshot*



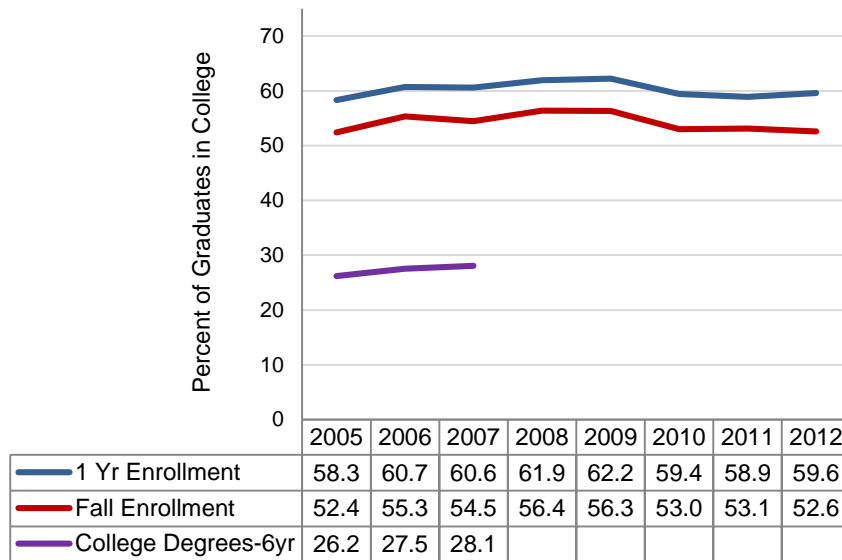
**Table 1** indicates that the number of graduates enrolled in college within one year of graduation increased at a faster rate (21.2 %) compared to the rate at which the number of graduates increased (18.5%) between 2005 and 2012.

**Table 1: The Number of HISD Graduates and the Number of Graduates Enrolled in College within One Year of Graduation: Class of 2005 and 2012**

Number	2005	2012	Percent Increase
Graduates	8,162	9,674	18.5
Grad. in College within 1 Year	4,759	5,766	21.2

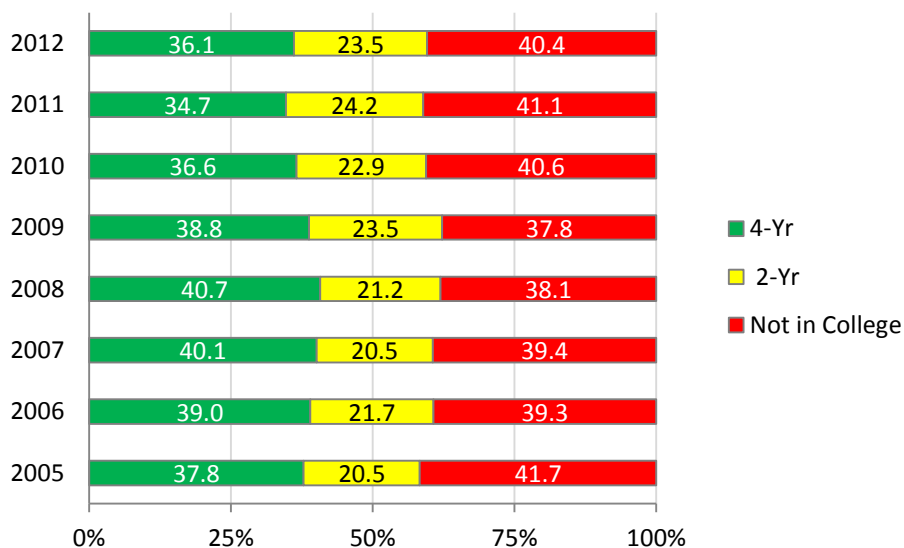
**Figure 2** shows the college-enrollment data as the percent of graduates. The one-year enrollment in college increased from 58.3% in 2005 to 59.6% in 2012 but has varied across time. The college enrollment increases by an average of 6.1% from the fall semester to the following spring and summer semesters. The rate of college degrees earned within six years after high school graduation increased from 26.2% for the class of 2005, to 28.1% for the class of 2007. These figures are close to 50% of the fall enrollment, specifically 51.6% of the fall enrollment for the class of 2007.

**Figure 2. Percent of Graduates Enrolled in College in Fall and within 1 Year after Graduation, and College Degrees within 6 Years after HS Graduation**  
*August 15, 2013 snapshot*



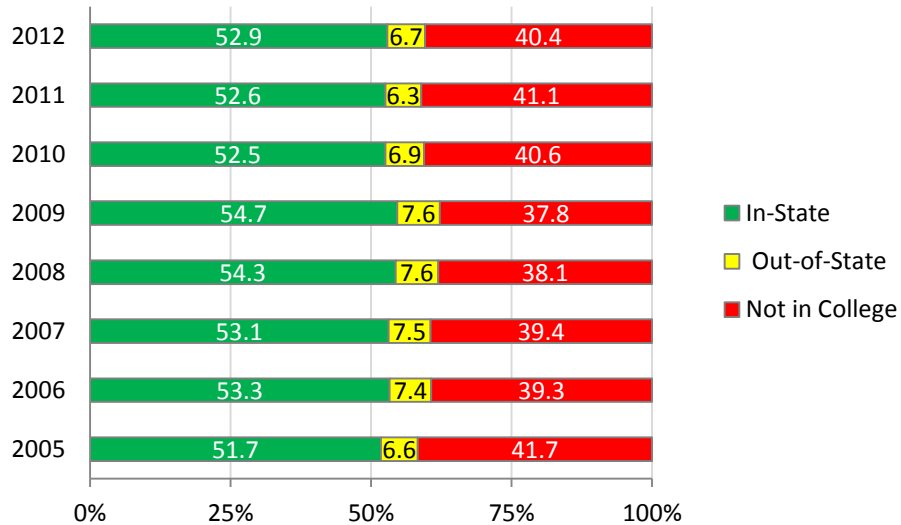
**Figure 3** shows the distribution of the enrollment of graduates by college-type, i.e., by 2-year and 4-year institutions. As the number of graduates and the number enrolled in college increased from 2005 to 2012, the HISD graduates enrolled in 4-year institutions declined from 37.8% in 2005 to 36.1% in 2012, while the enrollment in 2-year institutions increased from 20.5% to 23.5% during the same period. However, the 36.1% of students attending a 4-year institution reflected an increase of 1.4 percentage points over 2011.

**Figure 3. Percent of Graduates in 2-Year and 4-Year Colleges within One Year after Graduation**  
*August 15, 2013 snapshot*



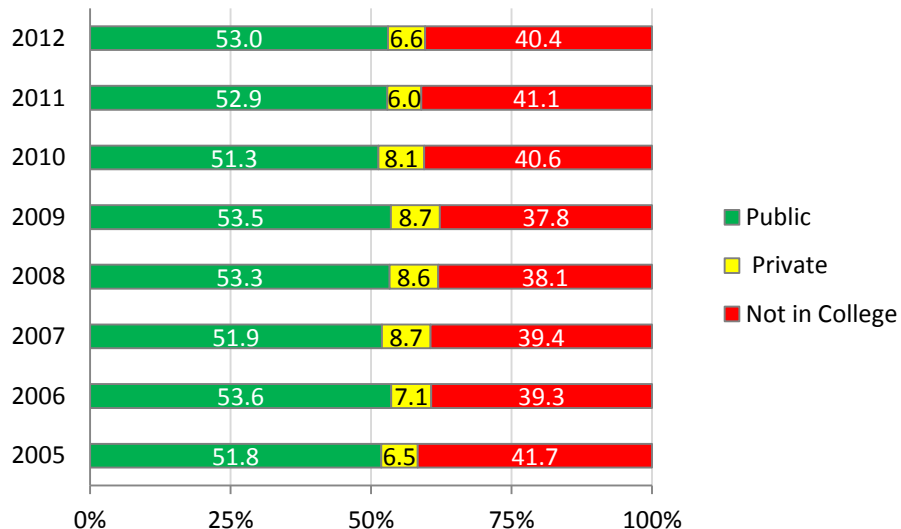
**Figure 4** shows the distribution of the enrollment of graduates by in-state or out-of-state institutions. As the number of graduates and the number enrolled in college increased from 2005 to 2012, the HISD graduates enrolled in Texas institutions increased from 51.7% in 2005 to 52.9% in 2012, while the enrollment in out-of-state institutions peaked for the class of 2009 at 7.6% and declined to 6.7% in 2012, although there was an increase from 2011.

**Figure 4. Percent of Graduates Enrolled In-state and Out-of-state Colleges within One Year after Graduation**  
*August 15, 2013 snapshot*



**Figure 5** shows the enrollment distribution of the graduates by public or private institutions. As the number of graduates and the number enrolled in college increased from 2005 to 2012, the HISD graduates enrolled in public institutions increased from 51.8% in 2005 to 53.0% in 2012. The enrollment in private institutions peaked at 8.7% in 2009, and declined to 6.6% in 2012, although this reflected an increase from 2011.

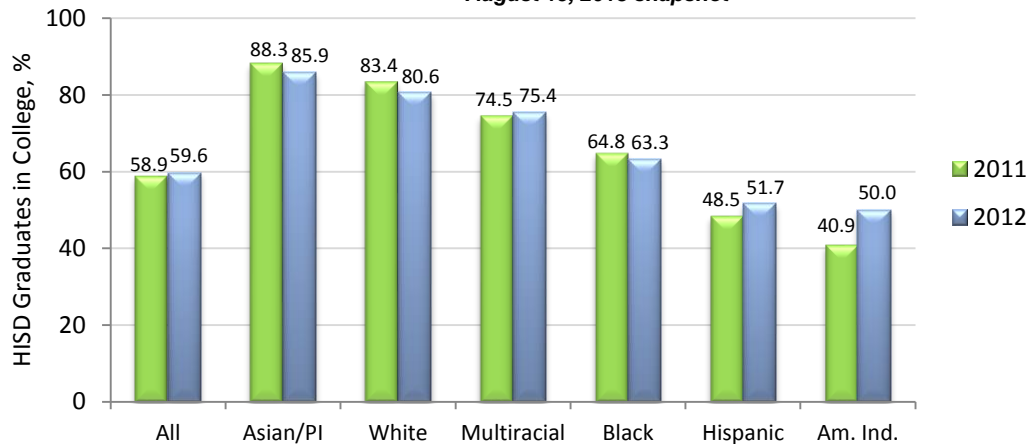
**Figure 5. Percent of Graduates Enrolled in Public and Private Colleges within One Year after Graduation**  
*August 15, 2013 snapshot*



**Figure 6** shows a comparison of the college-enrollment of the various ethnic groups within one year of graduation from high school. The college-going rate in 2012 varies from 50.0% for the American Indian students to 85.9% for the Asian/Pacific Islander students. Notably, the only significant group based on relative size that performed well below the district average of 59.6% is the Hispanic student group at 51.7%. In addition to the large gaps of 28.9 percentage points between the White-Hispanic student groups, and 17.3 percentage points between the White-Black student groups, a substantial gap of 11.6 percentage points exists between the Black-Hispanic groups. However, the Hispanic student group showed the most improvement of 3.2 percentage points over the last two years.

**Figure 6. HISD Graduates in College within One Year of Graduation by Ethnicity**

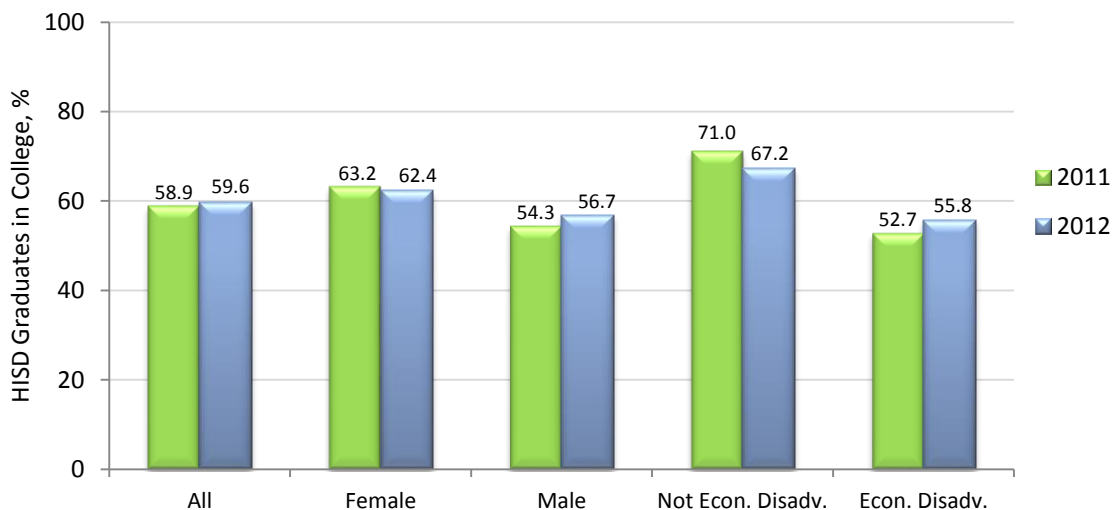
*August 15, 2013 snapshot*



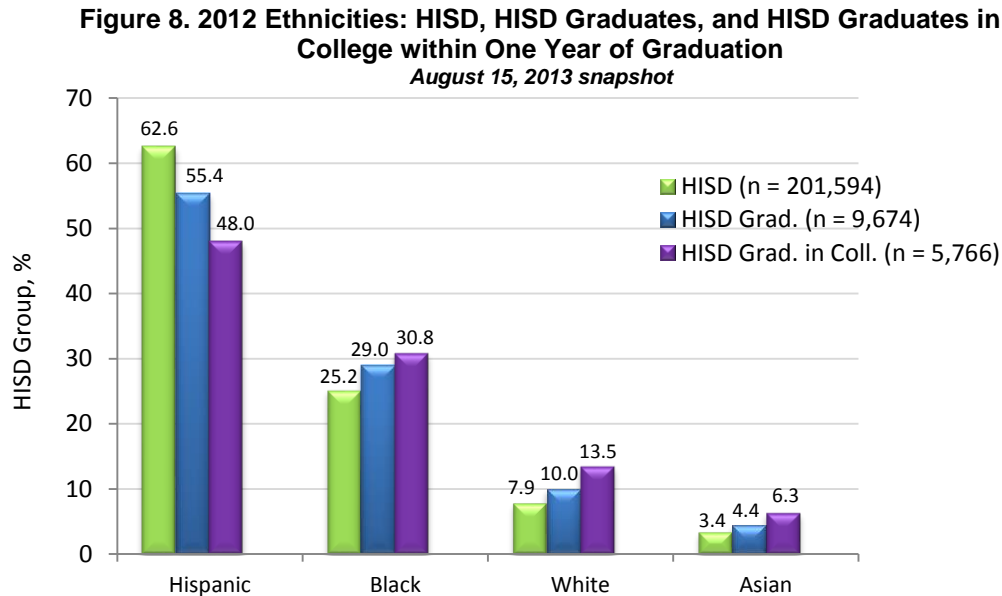
**Figure 7** shows a comparison of the college-enrollment within one year of graduation based on gender and socio-economic status. A gap of 5.7 percentage point exists between the female-male student groups, and a larger gap of 11.4 percentage points exists between the not- economically disadvantaged and the economically disadvantaged groups in 2012. The largest improvement was shown for the economically disadvantaged group which increased by 3.1 percentage points.

**Figure 7. HISD Graduates in College within One Year of Graduation by Gender and Socio-economic Status**

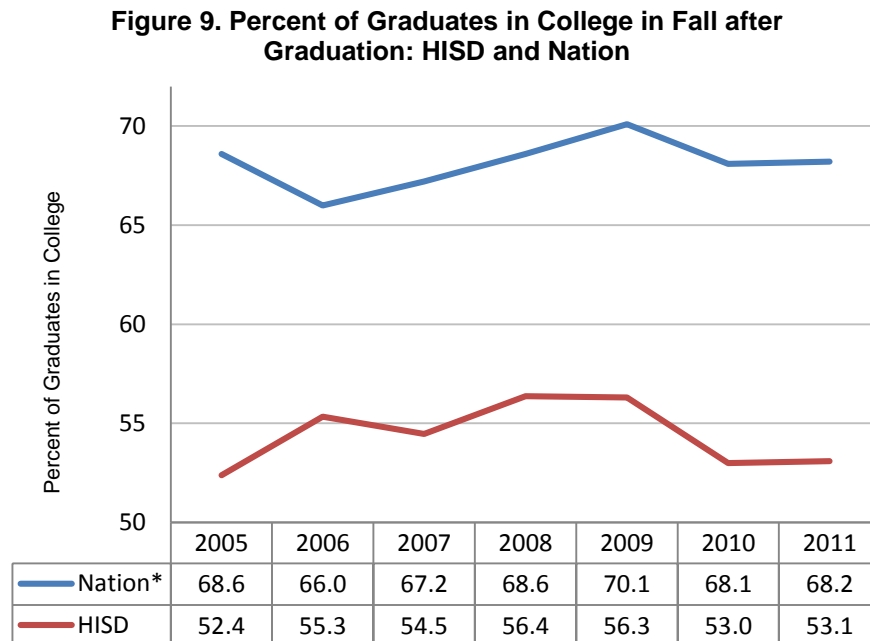
*August 15, 2013 snapshot*



**Figure 8** highlights the impact of the differentials in the graduation rates and the college-going rates of the various ethnic student groups on the ethnic distribution of the HISD graduates, the college-enrolled students, and the class of 2007 that graduated with a college degree with six years of graduation from high school. Hispanic students reflect a smaller percentage of graduates, and graduates enrolling in college than they do in the district's enrollment.



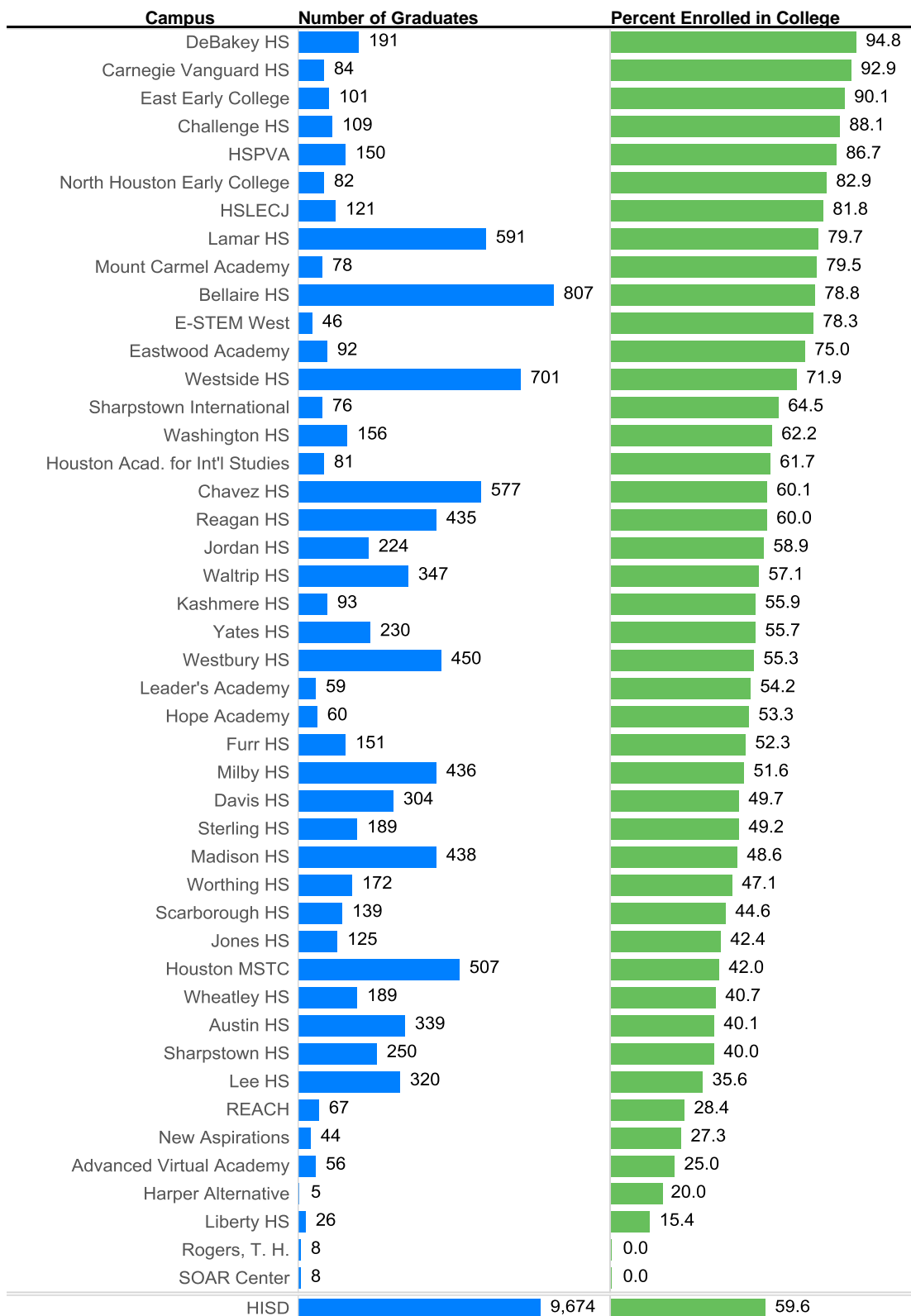
**Figure 9** shows a comparison of the fall college enrollment of HISD graduates and the nation during 2005-2011. While a significant gap exists, the gap declined from 16.2 percentage points in 2005 to 15.1 percentage points in 2011.



\*Data Source: Aud, S., Wilkinson-Flicker, S., Kristapovich, P., Rathbun, A., Wang, X., and Zhang, J. (2013). *The Condition of Education 2013* (NCES 2013-037). U.S. Department of Education, National Center for Education Statistics. Washington, DC: U.S. Government Printing Office

**Figure 10** shows the number of graduates and the college-enrollment rate at the campus level.

**Figure 10. Number of High School Graduates by Campus and the Percent Enrolled in College within One Year of Graduation: Class of 2012**



## **Administrative Response**

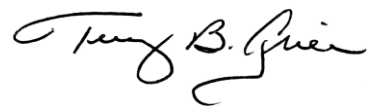
Overall, the trends reflected in the National Student Clearinghouse data are positive and speak to the district's college-bound culture and the effectiveness of its initiatives. Most noteworthy is the increase in the percentage of students enrolled in college within one year of graduating from high school.

While Hispanic students experienced significant gains (3 percentage points) in college enrollment, the Hispanic population continues to be the most underrepresented group after American Indians. The percentage of economically disadvantaged students enrolling in college also increased by over 3 percentage points and the gap between economically and not economically disadvantaged students enrolling in college decreased from over 18 percentage points to less than 12 percentage points.

The district is implementing several measures to ensure that more of its students enroll in college upon graduation:

- It is continuing to administer the PSAT to all freshmen-juniors and the SAT to all juniors in the district.
- Naviance is continuing to be implemented and promoted to help students create, track and reach their post-secondary goals.
- EMERGE is helping talented low-income students in the district access higher education opportunities at top-tier colleges.
- A new College Readiness course that focuses on SAT preparation and college awareness is being offered to juniors at 23 of the district's schools.
- The AP curriculum in several of the most common courses is being enhanced to ensure that students are receiving more rigorous instruction that will prepare them for college.

Should you have any questions or require further information, please contact me or Carla Stevens in the Department of Research and Accountability at (713) 556-6700.

  
\_\_\_\_\_  
TBG

cc. Superintendent's Direct Reports  
Dana Bost  
Richard Cruz  
Lupita Hinojosa  
Altagracia Guerrero  
Nancy Gregory  
Somya Kumar  
Chief School Officers  
School Support Officers  
High School Principals



**Number of Graduates in Class of 2005-2012 and Percent Enrolled in College within One Year of Graduation**

School	Number of Graduates in Class								% Graduates Enrolled in College within One Year of Graduation							
	2005	2006	2007	2008	2009	2010	2011	2012	2005	2006	2007	2008	2009	2010	2011	2012
HISD	8,162	7,614	7,536	7,883	8,584	9,110	9,881	9,674	58.3	60.7	60.6	61.9	62.2	59.4	58.9	59.6
Advanced Virtual Academy						14	26	56						28.6	19.2	25.0
Austin HS	291	343	282	331	406	420	388	339	44.7	44.0	34.8	42.0	43.8	39.8	34.3	40.1
Bellaire HS	662	678	692	703	712	702	712	807	80.2	83.2	81.1	84.8	85.1	81.2	80.5	78.8
Carnegie Vanguard HS	29	31	75	71	79	79	80	84	79.3	87.1	94.7	90.1	91.1	92.4	96.3	92.9
Challenge HS	3	13	36	58	79	102	87	109	*	84.6	83.3	75.9	87.3	86.3	82.8	88.1
Chavez HS	395	387	359	409	461	539	545	577	51.9	51.9	56.0	55.3	50.5	54.4	57.6	60.1
Community Services	14	12	2	3	2	3	1	1	50.0	41.7	*	*	*	*	*	*
Contemporary Learning Center	104	56	42	72	67	135	82	3		33.9	28.6	38.9	29.9	33.3	41.5	*
Davis HS	265	237	225	257	305	323	372	304	46.4	46.0	41.8	44.7	50.2	42.4	39.8	49.7
DeBakey HS	124	153	161	146	116	189	210	191	96.0	93.5	93.2	96.6	93.1	95.8	94.3	94.8
East Early College						56	110	101						83.9	83.6	90.1
Eastwood Academy	61	52	49	59	72	60	65	92	54.1	67.3	75.5	79.7	69.4	61.7	81.5	75.0
E-STEM West HS								46								78.3
Furr HS	230	148	124	142	134	150	183	151	40.4	50.0	54.8	44.4	53.7	48.0	44.8	52.3
Harper Alternative	6	4	5	7	3	5	8	5	16.7	*	0.0	28.6	*	0.0	12.5	20.0
Hope Academy						12	33	60						33.3	66.7	53.3
Houston Acad. for Int'l Studies						38	77	81						89.5	63.6	61.7
Houston MSTC	423	346	330	324	414	431	448	507	43.0	47.4	45.2	44.1	43.7	40.6	38.8	42.0
HSLECJ	143	134	139	157	147	122	120	121	78.3	73.9	75.5	74.5	74.1	76.2	83.3	81.8
HSPVA	158	154	167	170	146	147	153	150	75.9	83.1	86.2	87.1	87.0	89.8	83.0	86.7
Jones HS	164	156	133	133	156	112	124	125	46.3	45.5	42.9	54.1	53.2	50.9	43.5	42.4
Jordan HS	297	201	265	221	233	270	282	224	56.6	54.2	55.8	58.4	61.4	58.9	59.2	58.9
Kashmere HS	122	97	82	81	91	90	105	93	46.7	44.3	36.6	35.8	46.2	45.6	48.6	55.9
Lamar HS	701	647	673	766	834	620	743	591	78.3	81.1	81.7	83.8	82.0	83.4	80.3	79.7
Leader's Academy					17	34	71	59						76.5	52.9	50.7
Lee HS	290	232	257	226	225	289	303	320	40.0	42.7	35.8	38.5	44.0	37.7	36.3	35.6
Liberty HS		4	18	21	32	50	31	26		*	5.6	0.0	6.3	8.0	0.0	15.4
Madison HS	353	402	349	335	388	384	492	438	56.7	57.2	63.3	52.8	59.5	58.1	52.2	48.6
Milby HS	402	353	292	408	413	394	486	436		57.2	55.5	57.6	58.6	52.3	48.1	51.6
Mount Carmel Academy					24	37	52	78					87.5	94.6	82.7	79.5
New Aspirations				5	4	18	59	44				20.0	*	38.9	27.1	27.3
North Houston Early College								82								82.9
REACH		16	23	62	101	105	73	67		31.3	0.0	16.1	22.8	25.7	15.1	28.4
Reagan HS	328	269	252	262	331	348	368	435	49.7	52.0	52.4	55.7	57.1	52.6	56.3	60.0
Rogers, T. H.	5	7	7	8	7		9	8	0.0	0.0	0.0	0.0	0.0		0.0	0.0
Scarborough HS	166	160	163	139	139	143	141	139	43.4	45.6	44.8	41.7	45.3	50.3	41.8	44.6

\* Masked: Less than 5 graduates

**Number of Graduates in Class of 2005-2012 and Percent Enrolled in College within One Year of Graduation**

School	Number of Graduates in Class								% Graduates Enrolled in College within One Year of Graduation							
	2005	2006	2007	2008	2009	2010	2011	2012	2005	2006	2007	2008	2009	2010	2011	2012
HISD	8,162	7,614	7,536	7,883	8,584	9,110	9,881	9,674	58.3	60.7	60.6	61.9	62.2	59.4	58.9	59.6
Sharpstown HS	249	248	252	191	206	264	187	250	53.0	49.2	47.6	52.9	52.9	43.9	52.4	40.0
Sharpstown International							47	76							61.7	64.5
SOAR Center		5	8	9	10		9	8		0.0	12.5	11.1	0.0		11.1	0.0
Sterling HS	187	176	173	154	154	190	237	189	44.9	46.0	53.2	45.5	63.0	56.8	50.6	49.2
Waltrip HS	331	304	326	305	340	341	386	347	51.7	56.9	59.5	62.3	59.1	58.1	59.6	57.1
Washington HS	203	202	183	181	169	188	162	156		60.4	60.7	59.1	66.9	67.6	60.5	62.2
Westbury HS	286	288	262	345	318	333	399	450	57.7	62.2	57.3	63.5	61.9	60.7	55.1	55.3
Westside HS	544	505	532	533	606	598	665	701	79.0	78.6	77.6	81.4	76.2	78.4	75.5	71.9
Wheatley HS	126	128	178	182	218	232	193	189	34.1	38.3	41.0	42.3	43.1	37.1	51.8	40.7
Worthing HS	228	185	155	127	138	216	240	172	54.8	63.2	56.1	52.0	57.2	52.3	57.5	47.1
Yates HS	234	245	233	238	223	223	298	230	61.5	61.6	56.7	58.8	65.9	61.0	61.1	55.7

\* Masked: Less than 5 graduates