

MEMORANDUM

March 6, 2015

TO: Board Members

FROM: Terry B. Grier, Ed.D.
Superintendent of Schools

SUBJECT: **PRELIMINARY SAT/NATIONAL MERIT SCHOLARSHIP QUALIFYING TEST (PSAT/NMSQT) FALL 2014–2015**

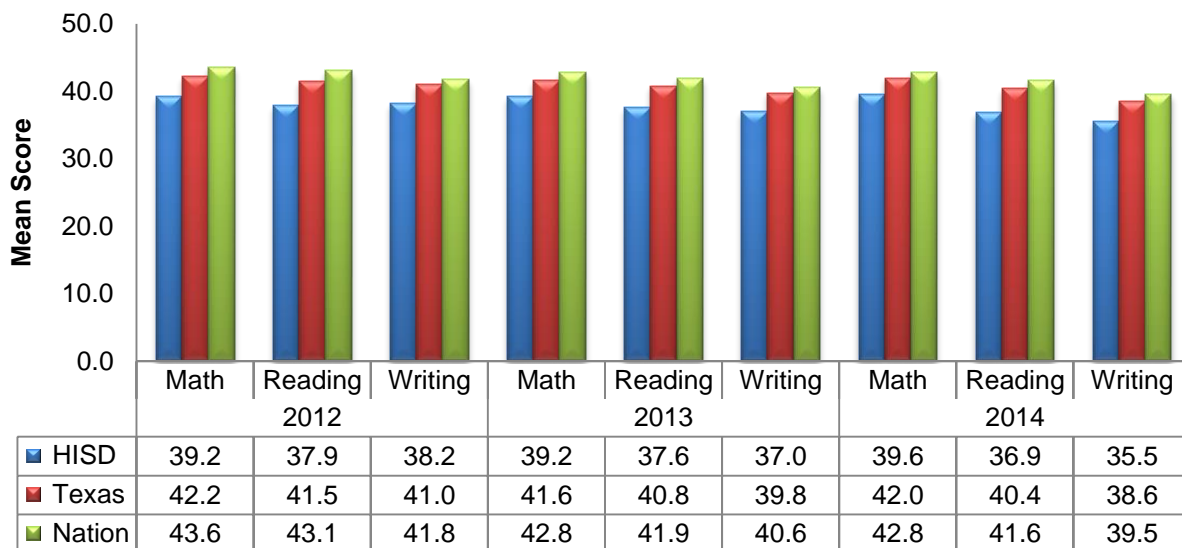
CONTACT: Carla Stevens, Research and Accountability, (713) 556-6700

The results from the Preliminary SAT/National Merit Scholarship Qualifying Test (PSAT/NMSQT) have been released by the College Board. The purpose of this final report is to provide results of the performance of HISD students on the PSAT/NMSQT, including the participation rates and performance of freshmen, sophomores, and juniors; group comparisons; the results of the eighth ReditStep assessment; and campus-level results.

When comparing the performance of HISD sophomores from 2013 to 2014, the mean score for mathematics increased by .4 points. Reading decreased by .7 points and writing decreased by 1.5 points.

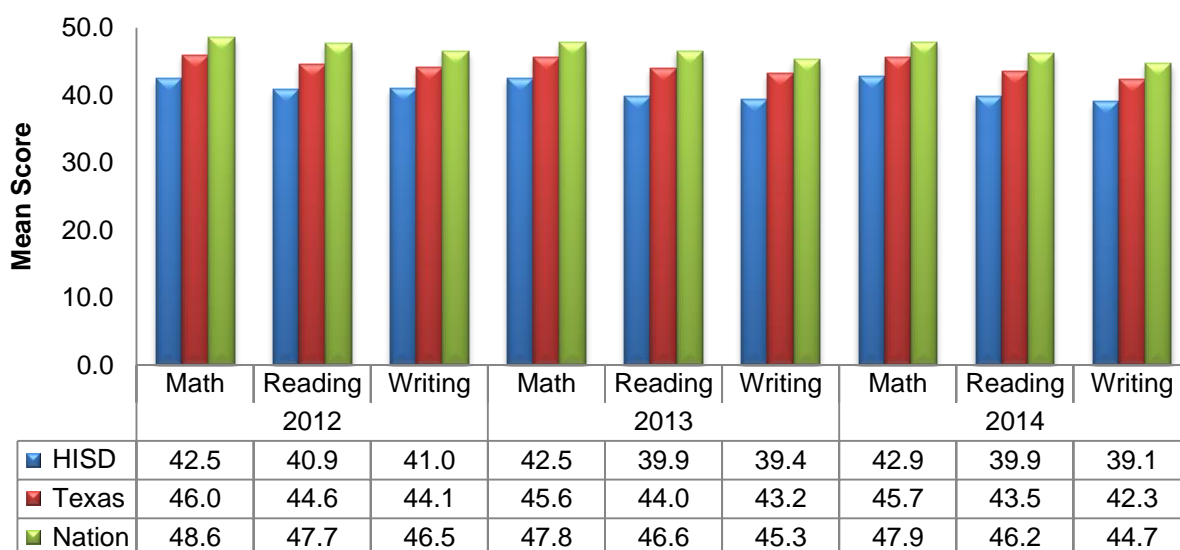
Results for HISD sophomores and juniors compared with their state and national counterparts for 2012 thru 2014 are presented in **Figures 1 and 2**.

Figure 1: Mean PSAT Scores of 10th Grade Students in HISD, Texas, and the Nation, Fall 2012 - 2014



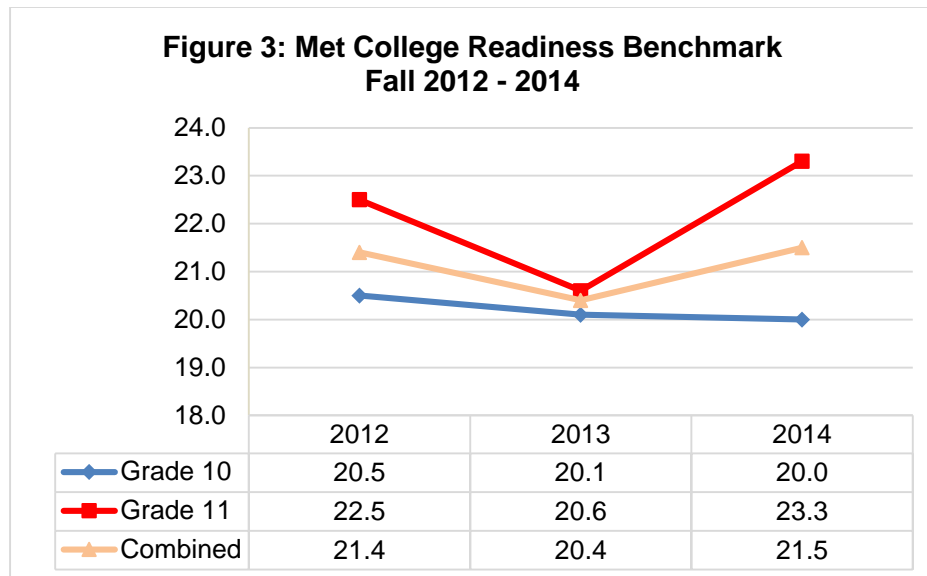
The average performance of HISD juniors in the fall of 2014 increased in mathematics by .4 points and decreased by .3 points in writing, while reading remained constant.

Figure 2: Mean PSAT Scores of 11th Grade Students in HISD, Texas, and the Nation, Fall 2012 & 2013



College Readiness Benchmark Performance

The College Readiness Benchmark helps educators identify students' potential for college success. For both sophomores and juniors, the PSAT/NMSQT benchmarks are the scores associated with a 65-percent likelihood of achieving a first year college grade point average of 2.67 or higher. The score needed for a junior is a combined score (reading, mathematics, and writing) of 142 and for sophomores, a combined score of 133. The percentage of sophomores and juniors that met the College Readiness Benchmark for fall 2014 is presented in **Figure 3**.



Administrative Response

After a review of the 2014-2015 Preliminary SAT/National Merit Scholarship Qualifying Test (PSAT/NMSQT) report, the department of College Readiness has the following response:

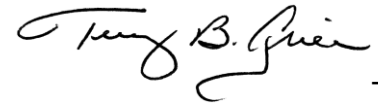
In an effort to improve performance on the PSAT/SAT, the district has just acquired PrepMe: an adaptive and personalized online PSAT/SAT prep program that integrates with Naviance for every 9th, 10th, and 11th grader in the district. The program creates a custom course for each student tailored around their individual needs and focuses on content rather than testing strategies. College Readiness will be working with the schools office, FACE, and Communications to ensure that HISD students and their families are taking advantage of this resource.

In the area of **College Readiness**, all high school campus test coordinators which include administrators, counselors, college access coordinators, and instructional specialists have been provided training on the benefits of using the Summary of Answers and Skills (SOAS) to aid instructional planning at the campus. This has been successful and the district intends to continue providing yearly assistance to campuses that analyze their SOAS as a means to increase academic performance and preparedness for college entrance exams.

In the area of **Student Performance**, College Readiness works with the Curriculum Department and the College Board, to provide additional training to teachers that will focus more closely on strategies and best practices such as pacing on the test. This training will be provided in an effort to assist campuses as they work to increase student performance on the PSAT and close performance gaps.

In the area of **Student Participation**, the district is concerned about the number of eligible special education students in the test administration. To improve in this area, College Readiness will collaborate with the Office of Special Education Services (OSES) senior managers for secondary schools and the College Board to ensure that all campus Students with Service Disabilities (SSD) coordinators and campus Special Education Chairpersons are trained on the approval process for testing with accommodations well before submission deadlines.

The High School Office recently facilitated sessions for schools to learn more about using College Board online resources and tools and continues to work to show schools the value of PSAT data to drive increased rigor in general instruction. The High School Office will also be providing schools with PSAT-based information on students to help guide Advanced Placement course recruitment. Additionally, the High School Office is using the data generated by recent PSAT tests to better understand teacher effectiveness and to analyze student recruitment outcomes. Finally, the High School Office is working with a few, individual schools to look at ways to increase participation rates.



TBG

cc: Rick Cruz
Superintendent's Direct Reports
Chief School Officers



RESEARCH

Educational Program Report

PRELIMINARY SAT/NATIONAL MERIT
SCHOLARSHIP QUALIFYING TEST
(PSAT/NMSQT) REPORT: FALL 2014–2015



2015 Board of Education

Rhonda Skillern-Jones

President

Manuel Rodriguez, Jr.

First Vice President

Wanda Adams

Second Vice President

Paula Harris

Secretary

Juliet Stipeche

Assistant Secretary

Anna Eastman

Michael L. Lunceford

Greg Meyers

Harvin C. Moore

Terry B. Grier, Ed.D.

Superintendent of Schools

Carla Stevens

Assistant Superintendent

Department of Research and Accountability

Chih-Hsun Huang, Ed.D.

Research Specialist

Edward George LaSage, Jr.

Research Manager

Houston Independent School District
Hattie Mae White Educational Support Center
4400 West 18th Street Houston, Texas 77092-8501

www.HoustonISD.org

It is the policy of the Houston Independent School District not to discriminate on the basis of age, color, handicap or disability, ancestry, national origin, marital status, race, religion, sex, veteran status, political affiliation, sexual orientation, gender identity and/or gender expression in its educational or employment programs and activities.

PSAT/NMSQT 2014–2015

Introduction

The Preliminary SAT/National Merit Scholarship Qualifying Test (PSAT/NMSQT), which is a national examination administered in October of each year by the College Board, measures critical reading, mathematics problem solving, and writing skills. The PSAT/NMSQT serves as preparation for the Scholastic Aptitude Test (SAT). An important benefit is that the PSAT/NMSQT serves as a qualifying examination for numerous scholarship programs that are sponsored by corporations, colleges and universities, and other organizations, including the National Merit scholarships. In addition to the National Merit Scholarship finalists, other specific recognition is bestowed to high-scoring Hispanic students through the National Hispanic Recognition Program (NHRP) and to high scoring African American students through the National Scholarship Service (NSSFNS) which assists students in gaining access to postsecondary educational institutions.

HISD launched the “PSAT for All” initiative in 2003 as a way to enroll more students in Advanced Placement (AP) courses and prepare them to be successful on the SAT which is required by most colleges. The district-wide initiative enables all HISD tenth-graders to take the PSAT/NMSQT for free. Today, HISD is more focused than ever on getting students to take more rigorous courses and preparing them for college and careers. On August 12, 2010, the HISD Board of Education expanded the PSAT for All program to include ninth-graders. HISD provides the funding for free PSAT/NMSQT tests for incoming freshmen and uses the College Board Early Preparation Program to prepare them for the SAT and SAT Subject Tests. Students also received personalized feedback on their command of the skills needed to graduate from high school and succeed in college courses.

The College Board (2006) reports that the PSAT/NMSQT can be utilized to identify students who may be successful in AP courses. The College Board provides expectancy tables and AP Potential as resources for schools and the district to aid in identifying students who may be successful in AP courses. AP Potential uses a different combination of PSAT scores to predict success on each of the different AP subjects.

The purpose of this report is to provide an examination of the participation and performance of HISD students under the eleventh year of the HISD PSAT for All. The report is also designed to compare the current year's results with the previous year's results, including the participation rates of freshmen, sophomores, and juniors as well as their mean scores. The fall of 2010 represents the first year for a new indicator from the College Board, the College Readiness Benchmark for sophomores and juniors, designed to help educators determine whether students are considered on track to be ready for college. Also, new as of 2010 was the REDIStep, an eighth-grade assessment to indicate readiness for the PSAT and SAT, which was administered to district students. Results from 2013 and 2014 for the College Readiness Benchmark and REDIStep are presented in this report.

Administration and Scoring

The PSAT/NMSQT is a two-hour and ten-minute test. The reading questions are presented in two 25-minute sections. The mathematics questions are also presented in two 25-minute sections for a total of 100 minutes. For the writing section, a total of 30 minutes is allotted for completion. Three scaled scores are generated for each student: a reading score, a mathematics score, and a writing score. Each score ranges from 20 to 80; these numbers are analogous to the scaled scores of 200 to 800 generated by the SAT.

Methods

Participants

A total of 33,397 of HISD students in grades 9–11 participated in the fall 2014 PSAT/NMSQT. The percent of students in grades 9 through 11 who participated in the fall of 2014 was 82.0 percent, which was a slight decrease from the 82.4 percent of students who participated in 2013.

Data Collection and Analysis

The College Board reported test performance along with demographic information supplied by the students to HISD. These data included results for all HISD schools that had participating students. These data, together with enrollment data from the Public Education Information Management System (PEIMS) database, were analyzed. Data collected from the October submission and updated with the January resubmission were used to determine the total enrollment for district freshmen, sophomores, and juniors. Participation rates were calculated by dividing the number of students tested by the PEIMS snapshot of fall enrollment for the same group. Participation rates for freshmen, sophomores, and juniors were calculated across the district and by school.

Mean reading, mathematics, and writing scores for freshmen, sophomores, and juniors were calculated by school, gender, and race/ethnicity. Demographic data used in the present report are based on students' self-reported data on the PSAT.

Results

District-wide Participation

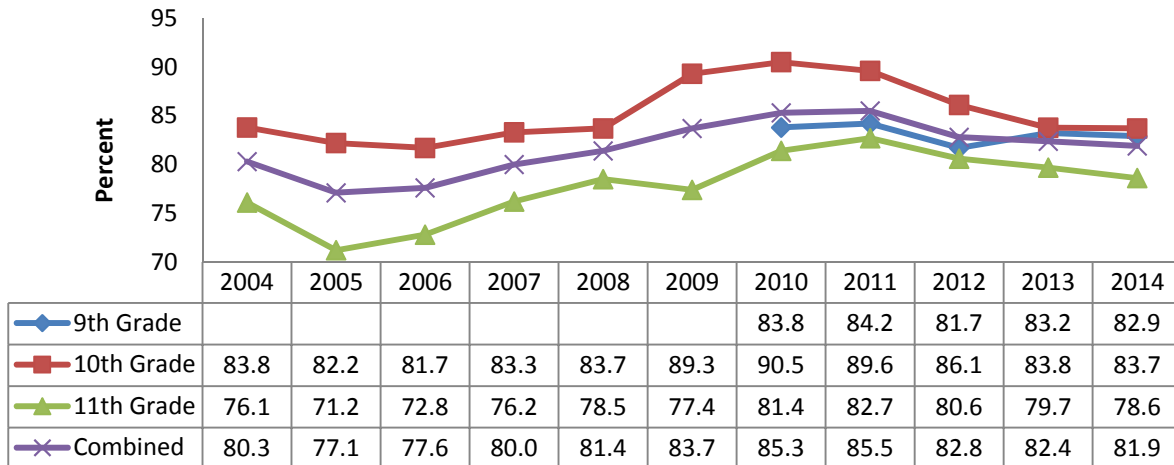
Of the 40,714 HISD 9th through 11th graders eligible to take the PSAT, a total of 33,397 students participated in the fall 2014 PSAT/NMSQT. Although Special Education and limited English proficient students were included in the enrollment count, they could have been exempted from taking the PSAT based on ARD and LPAC committee decisions. The junior year is the year when participation qualifies a student for National Merit scholarships and recognition; many students take the exam in the sophomore year to prepare for the testing in the junior year. **Table 1** shows the number and rate of participation for HISD freshmen, sophomores, and juniors from fall 2013 and fall 2014.

Table 1. PSAT Participation Rates: HISD Freshman, Sophomores, Juniors, & Combined for Fall 2013 and 2014						
Grade	2013			2014		
	N Enrolled	N Tested	% Tested	N Enrolled	N Tested	% Tested
9th	15,119	12,583	83.2	16,166	13,427	82.9
10th	12,674	10,617	83.8	12,890	10,795	83.7
11th	11,284	8,991	79.7	11,658	9,175	78.6
Combined	39,077	32,191	82.4	40,714	33,397	81.9

- Although the percentages are slightly lower than the previous year, the number tested at all three grade levels increased.

Figure 1 shows a ten-year trend of PSAT participation rates for freshmen, sophomores, juniors, and all students combined from fall 2004 to fall 2014. From 2004 to 2009, the combined grades include grades 10 and 11, and from 2010 to 2014, the combined grades include grades 9, 10, and 11.

Figure 1: PSAT Participation Rates, 2004-2014



Participation by student groups including gender and race/ethnicity was examined for the past two administrations of the PSAT. The results of this analysis, including the number of students enrolled, and the percent of students who participated, are provided in **Tables 2 and 3**.

Table 2: PSAT Participation Rates of HISD Freshman, Sophomores, Juniors & Combined, Fall 2013 & 2014, by Gender

Grade	<u>2013</u>				<u>2014</u>			
	Female		Male		Female		Male	
	N Enrolled	% Tested	N Enrolled	% Tested	N Enrolled	% Tested	N Enrolled	% Tested
9th	7,196	83.5	7,923	80.3	7,700	84.2	8,466	81.8
10th	6,294	82.8	6,380	83.4	6,442	83.7	6,448	83.6
11th	5,757	80.7	5,527	77.7	5,839	79.8	5,819	77.5
Combined	19,247	82.4	19,830	80.5	19,981	82.7	20,733	81.2

Note: Rates may exceed 100% due to student self-reporting on PSAT demographic information.

- Participation has increased at 9th and 10th grade and decrease slightly at 11th grade by .2 percentage points.

The gender composition of students that took the PSAT in the fall of 2013 and 2014 is presented below in **Table 4**.

Table 4. Composition of 2013 and 2014 PSAT Takers by Gender and Grade Level*						
Grade	N Tested		% Female		% Male	
	2013	2014	2013	2014	2013	2014
9th	12,583	13,407	47.8	48.3	50.5	51.7
10th	10,617	10,787	49.1	50.0	50.1	50.0
11th	8,991	9,167	51.7	50.8	47.7	49.2
Combined	32,191	33,361	49.3	49.6	49.6	50.4

*In 2014, 1.1% of testers did not report gender.

The racial/ethnic composition of students that took the PSAT in the fall of 2013 and 2014 is presented in **Table 5**.

Table 5: Composition of PSAT Test Takers by Race/Ethnicity and Grade Level, Fall 2013 and 2014								
	Freshmen		Sophomores		Juniors		Combined	
	2013	2014	2013	2014	2013	2014	2013	2014
Number Tested	12,583	13,407	10,617	10,787	8,991	9,167	32,191	33,361
% African Amer.	23.4	25.9	24.5	25.6	24.2	25.7	24.0	25.7
% Asian American	3.3	3.6	3.7	4.2	5.0	4.6	3.9	4.1
% Hispanic	56.2	63.2	56.3	62.1	56.3	60.3	56.3	62.1
% White	7.4	7.3	8.0	8.0	8.4	9.4	7.9	8.1

Note: Percentages may not total 100 due to "no responses" or selection of ethnicities not included for the present analysis.

- The number of students tested increased at each grade level from 2013 to 2014.

Participation by Schools

A total of 46 HISD secondary schools had students taking the fall 2014 PSAT/NMSQT. **Table 6** presents the percentages of test takers from each of these high schools that took part in the PSAT/NMSQT for the past two years.

Table 6: PSAT Participation Rates of Freshmen, Sophomores, and Juniors, Fall 2013 & 2014

School	Freshman		Sophomore		Junior		Combined	
	2013	2014	2013	2014	2013	2014	2013	2014
	% Tested	% Tested	% Tested	% Tested	% Tested	% Tested	% Tested	% Tested
Austin HS	90.7	89.7	93.0	90.2	88.0	85.4	90.7	88.8
AVA	0.0	0.0	0.0	0.0	0.0	0.0	0.0	0.0
Beechnut Acad	0.0	0.0	58.1	77.8	0.0	106.7	15.3	27.2
Bellaire HS	87.8	94.7	82.7	88.1	56.5	82.4	77.7	88.6
Carnegie HS	99.5	100.0	98.9	98.0	99.3	98.7	99.2	98.9
Challenge EC HS	96.7	99.3	96.7	99.1	97.3	100.9	96.9	99.7
Chavez HS	83.1	85.2	87.3	87.9	91.3	77.8	86.8	83.9
Community Services	0.0	0.0	0.0	0.0	0.0	0.0	0.0	0.0
Davis HS	84.2	83.2	82.4	88.0	76.4	83.9	81.3	85.0
DeBakey HS	97.0	100.4	97.2	98.5	99.5	99.5	97.9	99.5
E-STEM Central HS	107.1	119.0	106.7	100.0	100.0	100.0	105.9	111.4
E-STEM West HS	98.1	94.8	96.9	98.0	100.0	93.0	98.1	95.5
East EC HS	99.2	98.3	99.2	99.2	99.1	100.0	99.2	99.1
Eastwood Acad HS	99.2	100.0	100.0	100.0	100.9	72.3	100.0	91.8
Energy Inst HS	97.0	96.4		98.8			97.0	97.4
Furr HS	81.2	72.5	86.3	83.1	85.4	81.6	84.1	77.8
HAIS HS	97.5	100.0	98.2	99.1	97.3	97.2	97.7	98.8
Harper Alt.	0.0	0.0	0.0	0.0	0.0	0.0	0.0	0.0
Hope Acad HS	0.0	0.0	72.7	0.0	0.0	0.0	22.9	0.0
Houston ISD	83.2	83.1	83.8	83.7	79.7	78.7	82.4	82.0
Houston MSTC HS	85.9	87.0	89.2	84.4	87.8	85.3	87.4	85.7
HSPVA	100.0	97.1	94.5	98.4	97.1	97.0	97.2	97.5
JJAEP				0.0				0.0
Jones HS	78.0	100.0	89.1	62.5	78.2	87.5	81.2	95.0
Jordan HS	95.3	96.6	97.5	95.1	95.5	95.1	96.2	95.7
Kashmere HS	54.1	66.7	74.4	79.4	81.2	79.8	68.5	74.2
Lamar HS	94.2	92.3	87.7	92.1	87.3	80.9	89.8	89.0
LECJ HS	94.7	100.0	98.7	100.0	98.2	99.3	97.4	99.7
Lee HS	85.4	58.9	89.4	71.3	77.0	88.4	84.0	70.0
Leland YMCPA	81.0	100.0	106.7	100.0	100.0	100.0	95.1	100.0
Long Acad	94.6	95.5	97.3	100.0		98.3	95.9	97.9
Madison HS	80.1	79.7	85.9	84.0	76.1	77.8	80.7	80.5
Middle College, Fraga		51.9		84.0		106.3		69.9
Middle College, Gulfton		0.0		0.0		0.0		0.0
Milby HS	89.8	88.4	90.2	93.8	88.5	87.0	89.5	90.0
Mount Carmel Acad	93.9	96.8	97.9	100.0	95.7	96.8	95.8	97.9
North Forest HS	81.0	85.4	86.1	90.3	83.3	84.5	83.5	86.5
North Houston EC HS	100.0	100.0	99.1	100.0	99.0	97.9	99.4	99.4
Reach HS		0.0			0.0	0.0	0.0	0.0
Reagan HS	93.6	97.5	91.8	96.8	89.7	93.0	91.8	95.9
Rogers TH MS	0.0	0.0	0.0	0.0	0.0	0.0	0.0	0.0
Scarborough HS	91.9	91.2	91.5	91.3	81.6	90.5	89.0	91.0
Sharpstown HS	92.2	92.0	91.3	94.2	95.4	85.8	92.8	91.1
Sharpstown Intern'l	98.0	96.6	93.7	97.9	96.5	95.2	96.0	96.6
South EC HS	94.4	97.0	100.0	100.0	100.0	100.0	98.3	98.2
Sterling HS	80.1	86.1	89.8	83.1	74.7	83.6	81.5	84.5
TCAH	0.7	0.1	0.4	1.3	5.7	5.5	1.5	2.2
Waltrip HS	90.7	93.1	94.1	95.2	88.9	94.9	91.3	94.3
Washington HS	78.1	85.3	77.9	94.7	87.4	84.2	80.4	87.7
Westbury HS	81.1	88.1	92.5	86.9	89.1	85.3	87.1	87.0
Westside HS	93.7	95.7	95.5	95.0	79.2	85.4	90.0	92.5
Wheatley HS	81.8	73.3	80.5	77.5	84.3	85.1	82.2	78.0
Worthing HS	73.3	78.7	85.0	83.9	72.0	77.4	76.8	79.8
Yates HS	79.3	79.5	82.6	83.5	81.1	75.5	80.9	79.5
YWCPA	93.9	100.0	97.9	97.1	98.2	97.1	96.4	98.4
Houston ISD	83.2	82.9	83.8	83.7	79.7	78.6	82.4	81.9

Student Mean Performance

In the following sections, the performance of HISD students was compared to those for the state of Texas and the nation for 2013 and 2014. Also, the performance of the individual grade levels tested, as well as the grades combined, was analyzed for the same time period. The district-wide and school-level performance data are presented by mean score for each section: reading, mathematics, and writing. Results were disaggregated by student groups for the district-wide results. Ten-year trend data are shown in **Appendix A**.

HISD, Texas, and the Nation

Results from the PSAT/NMSQT for HISD sophomores and juniors compared with their statewide and nationwide counterparts for 2012 thru 2014 administrations are presented in **Figures 2, 3 and 4**.

Figure 2: Mean PSAT Scores of 9th Grade Students in HISD, Texas, and the Nation, Fall 2012 - 2014

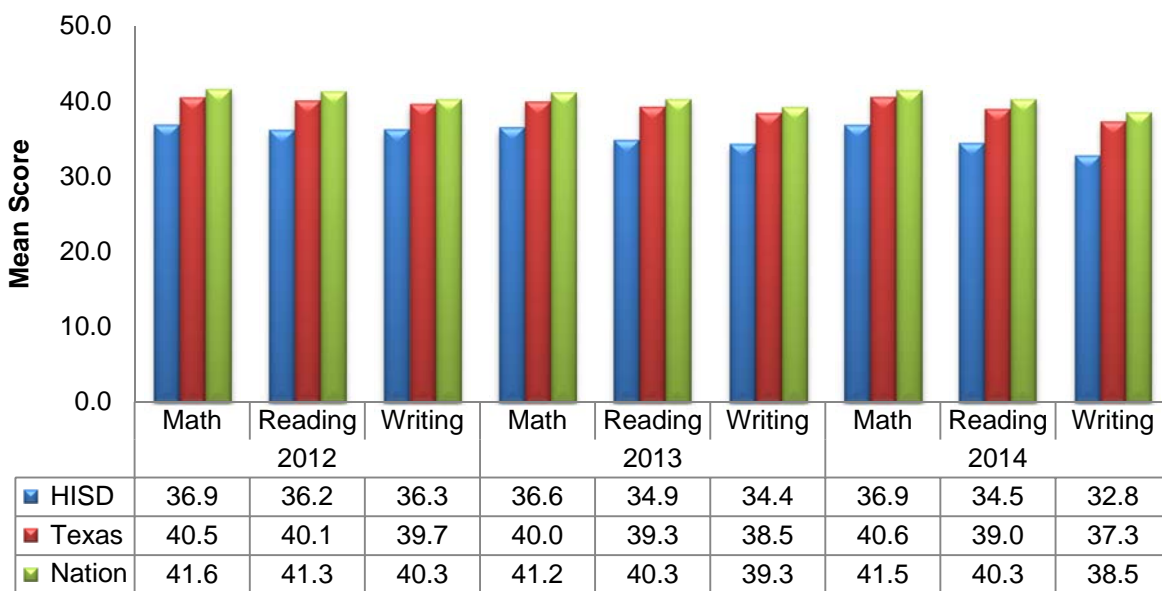


Figure 3: Mean PSAT Scores of 10th Grade Students in HISD, Texas, and the Nation, Fall 2012 - 2014

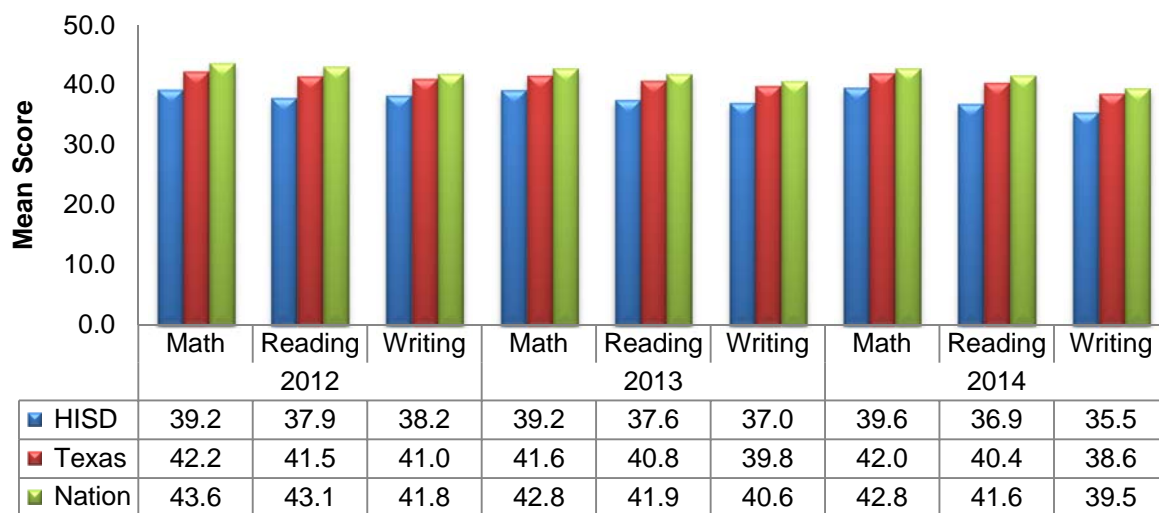
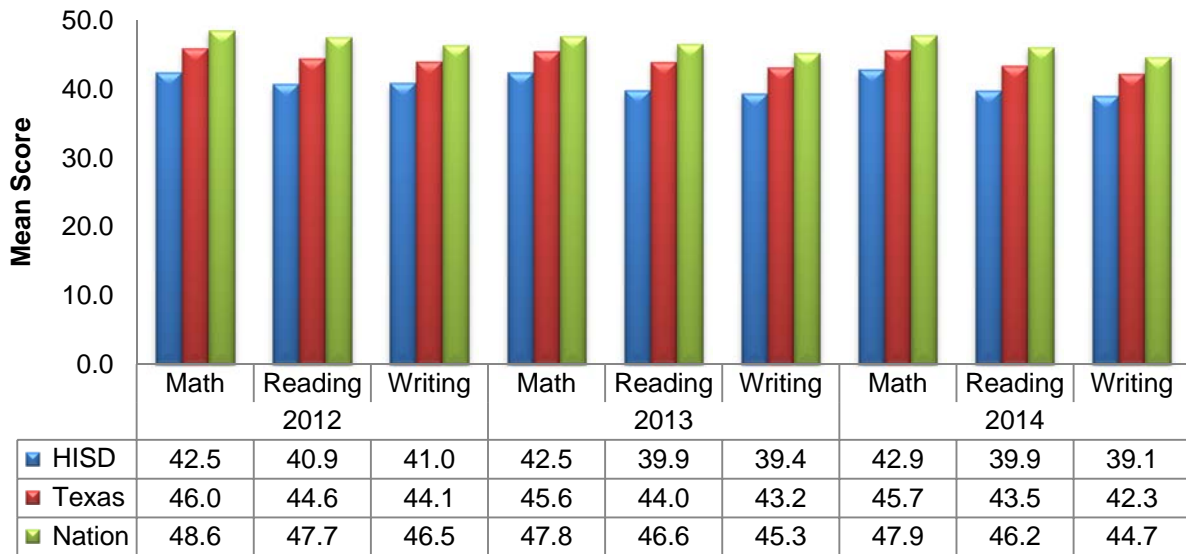


Figure 4: Mean PSAT Scores of 11th Grade Students in HISD, Texas, and the Nation, Fall 2012 & 2013



- Mean PSAT scores of 9th grade students increased in math by .3 points from 2013 to 2014 and decreased in reading by .4 points and writing by 1.6 during the same period.
- Mean PSAT scores of 10th grade students increased in math by .4 points from 2013 to 2014 and decreased in reading by .7 points and 1.5 points in writing during the same period.
- Mean PSAT scores of 11th grade students increased in math by .4 points from 2013 to 2014 and decreased in writing by .3 during the same period. Reading remained constant at 39.9.

Figures 5, 6, and 7 show the ten-year trend of PSAT mean scores for freshmen, sophomores, juniors and all students combined from fall 2005 to fall 2014, for each subject area. From 2005 to 2009, the combined grades include grades 10 and 11, and from 2010 to 2014, the combined grades include grades 9, 10, and 11.

Figure 5: 10-Year Trend of PSAT Mean Reading Scores

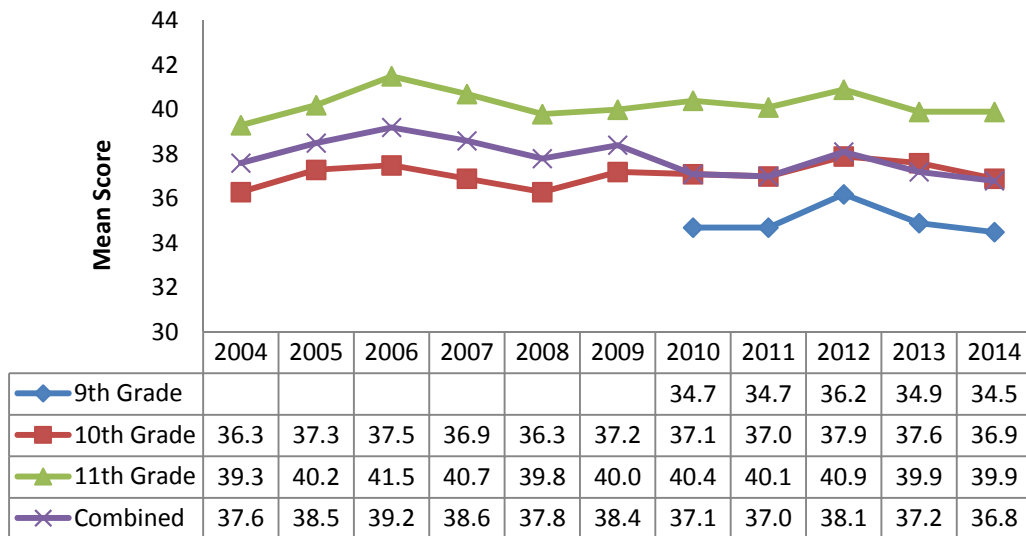


Figure 6: 10-Year Trend of PSAT Mean Math Scores

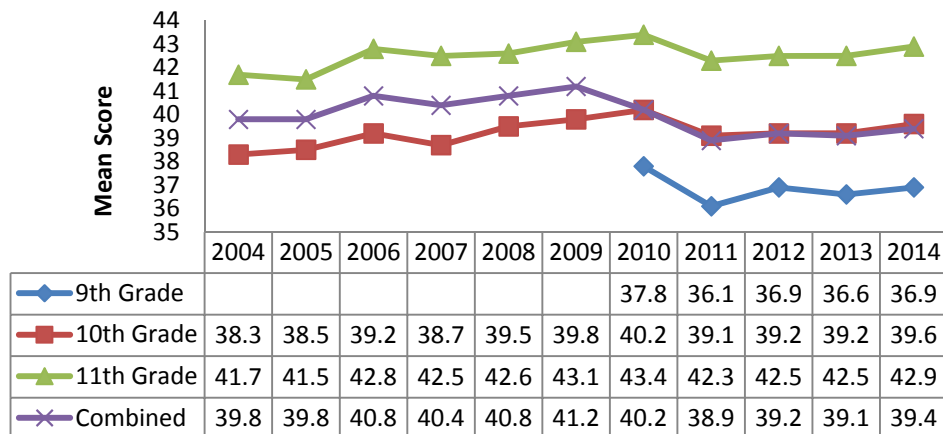
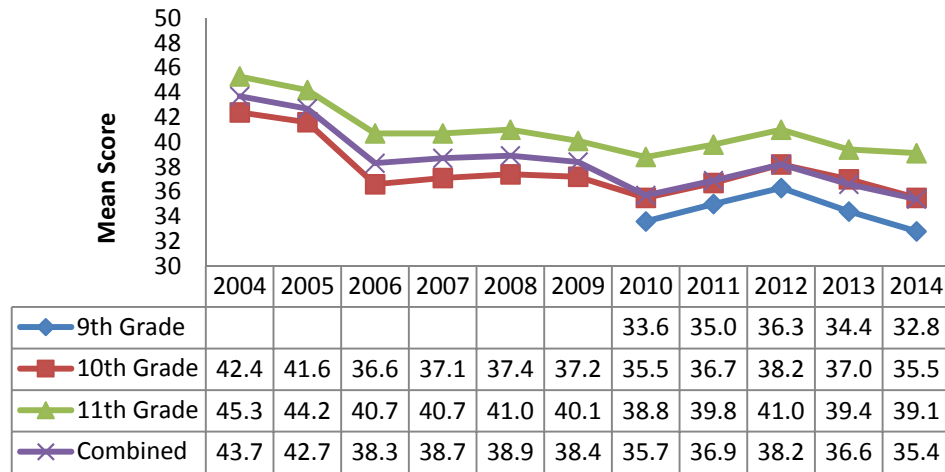


Figure 7: 10-Year Trend of PSAT Mean Writing Scores

- Mean PSAT reading scores for all grade levels combined have decreased over the last three years (2012, 2013 and 2014) from 38.1 to 36.8, a decrease of 1.3 points.
- Mean PSAT math scores for all grade levels combined have decreased over the last three years (2012, 2013 and 2014) from 39.2 to 39.4, a decrease of .3 points.
- Mean PSAT writing scores for all grade levels combined have decreased over the last three years (2012, 2013 and 2014) from 38.2 to 35.4, a decrease of 2.8 points.

District-wide Performance by PSAT Mean Score

Analysis of district-wide performance focused on the performance of freshmen, sophomores, juniors, and the combined performance of these three groups for 2013 and 2014. Results from the 2013 and 2014 PSAT/NMSQT are presented in **Table 7**. The average scores for reading, mathematics, and writing were calculated and analyzed to describe the performance of specific student groups.

Table 7. PSAT Mean Reading, Math, and Writing Scores by Student Group: Freshmen, Sophomores, Juniors, Combined, Fall 2013 & 2014

Student Group	2014											
	<u>Freshmen</u>			<u>Sophomores</u>			<u>Juniors</u>			<u>Combined</u>		
	Reading	Math	Writing	Reading	Math	Writing	Reading	Math	Writing	Reading	Math	Writing
All	34.5	36.9	32.8	36.9	39.6	35.5	39.9	42.9	39.1	36.8	39.4	35.4
Afr. Amer.	33.0	34.3	31.5	35.1	36.5	34.0	37.5	39.0	36.7	34.9	36.3	33.7
As. Amer.	45.7	50.5	43.9	48.0	54.0	47.2	52.7	58.2	52.6	48.6	54.0	47.7
Hispanic	33.2	36.2	31.5	35.4	38.8	33.9	38.1	41.8	37.2	35.3	38.5	33.8
White	44.7	45.1	42.5	47.9	48.5	46.1	51.4	53.2	50.5	47.8	48.8	46.2
Female	35.4	37.0	33.8	37.4	39.4	36.5	40.4	42.4	39.8	37.5	39.3	36.4
Male	33.7	36.7	31.9	36.4	39.8	34.6	39.4	43.5	38.3	36.1	39.5	34.5
Student Group	2013											
	<u>Freshmen</u>			<u>Sophomores</u>			<u>Juniors</u>			<u>Combined</u>		
	Reading	Math	Writing	Reading	Math	Writing	Reading	Math	Writing	Reading	Math	Writing
All	34.9	36.6	34.4	37.6	39.2	37.0	39.9	42.5	39.4	37.2	39.1	36.6
Afr. Amer.	33.6	34.8	33.2	35.7	36.4	35.3	37.9	39.4	37.6	35.5	36.6	35.1
As. Amer.	45.7	50.3	44.1	49.0	54.1	47.1	50.9	56.4	49.5	48.6	53.6	46.9
Hispanic	33.9	36.1	33.5	36.3	38.3	35.8	38.2	41.2	37.8	35.9	38.3	35.5
White	43.8	43.4	42.8	47.9	48.2	46.7	52.0	52.9	50.6	47.6	47.8	46.4
Female	35.6	36.9	35.3	38.1	39.2	37.8	40.6	42.3	40.2	37.9	39.2	37.5
Male	34.3	36.4	33.7	37.1	39.3	36.3	39.3	42.6	38.6	36.6	39.0	35.9

The fall 2014 PSAT mean scores for the reading, mathematics, and writing sections were also examined to determine the relationship between the performances of student ethnic groups and gender. Specifically, the interactions between student racial/ethnic groups, African American, Asian, Hispanic, and White with gender were examined. These results are presented in **Appendix B**.

Additionally, the fall 2014 PSAT mean scores for the reading, mathematics, and writing sections were examined to determine the achievement gap between minority student groups, Hispanic and African American students, and their White counterparts. The district-wide differences in mean scores were calculated for freshmen, sophomores, juniors, and those grades combined for 2013 and 2014. The results are presented in **Table 8**.

Table 8. PSAT Mean Score Achievement Gap for Reading, Math, and Writing: Freshmen, Sophomores, Juniors, & Combined, Fall 2013 & 2014

	2014											
	<u>Freshmen</u>			<u>Sophomores</u>			<u>Juniors</u>			<u>Combined</u>		
	Reading	Math	Writing	Reading	Math	Writing	Reading	Math	Writing	Reading	Math	Writing
Afr. Amer - White	-11.7	-10.8	-11.0	-12.8	-12.0	-12.1	-13.9	-14.2	-13.8	-12.9	-12.5	-12.5
Hispanic - White	-11.5	-8.9	-11.0	-12.5	-9.7	-12.2	-13.3	-11.4	-13.3	-12.5	-10.3	-12.4
	2013											
	<u>Freshmen</u>			<u>Sophomores</u>			<u>Juniors</u>			<u>Combined</u>		
	Reading	Math	Writing	Reading	Math	Writing	Reading	Math	Writing	Reading	Math	Writing
Afr. Amer - White	-10.2	-8.6	-9.6	-12.2	-11.8	-11.4	-14.1	-13.5	-13.0	-12.1	-11.2	-11.3
Hispanic - White	-9.9	-7.3	-9.3	-11.6	-9.9	-10.9	-13.8	-11.7	-12.8	-11.7	-9.5	-10.9

- The gap between African American and White students has increased for freshman students in reading, math and writing. The same holds true for the gap between Hispanic and White freshman students.
- The gap between African American and White students has increased for sophomore students in reading, math and writing. The gap between Hispanic and White sophomore students has increased in reading and writing but has decreased slightly in math.
- The gap between African American and White students has increased for junior students in math and writing but has decreased slightly in reading. The gap between Hispanic and White students has decreased for junior students in reading and math but has increased in writing.

School Performance by Mean Score

Analysis of school-level results focused on the performance of freshmen, sophomores, juniors, and the combined performance of these three groups for 2013 and 2014. Results from the 2013 and 2014 PSAT/NMSQT are presented in **Tables 9–13**. The averages of student reading, mathematics, and writing scores were calculated and analyzed to describe student performance.

Table 19. PSAT Mean Reading, Math, and Writing Scores by School: Freshmen, Fall 2013 & 2014						
School	Reading		Math		Writing	
	2013	2014	2013	2014	2013	2014
Austin HS	31.2	31.0	33.2	33.4	30.1	28.8
Bellaire HS	39.3	40.4	40.3	42.0	38.3	38.4
Carnegie HS	50.7	51.6	52.0	54.9	48.7	49.9
Challenge EC HS	41.9	42.0	43.3	43.3	41.1	40.6
Chavez HS	33.1	32.3	36.7	36.6	32.9	31.0
Davis HS	32.1	31.4	33.6	34.0	32.5	29.8
DeBakey HS	49.8	50.7	54.0	54.2	48.5	49.4
E-STEM Central HS	32.5	29.0	34.8	32.2	32.9	31.0
E-STEM West HS	34.5	33.0	38.5	37.3	34.5	31.2
East EC HS	40.6	39.9	43.7	44.4	40.8	39.5
Eastwood Acad HS	39.4	40.2	42.8	44.3	39.2	38.6
Energy Inst HS	38.2	39.4	39.5	41.7	37.1	36.6
Furr HS	31.1	32.3	33.9	34.6	31.0	30.1
HAIS HS	38.3	41.9	38.0	41.9	38.7	39.1
Houston MSTC HS	31.7	30.5	34.1	33.2	31.3	29.3
HSPVA	49.5	48.1	48.0	47.3	49.1	46.6
Jones HS	30.8	33.2	33.6	36.6	30.8	30.8
Jordan HS	33.6	32.5	36.5	34.8	34.0	30.8
Kashmere HS	30.6	29.7	32.4	31.5	29.5	28.2
Lamar HS	39.0	39.2	39.2	40.6	38.0	38.0
LECJ HS	37.7	37.6	39.1	39.4	37.5	35.5
Lee HS	31.1	29.9	33.3	32.9	30.8	28.6
Leland YMCPA	37.4	38.5	40.3	40.5	38.0	36.1
Long Acad	33.7	35.5	37.3	39.0	33.5	33.5
Madison HS	31.6	31.2	33.8	33.9	31.2	29.1
Middle College HS - Fraga		30.2		32.1		29.3
Milby HS	31.7	29.7	34.5	33.0	31.2	28.1
Mount Carmel Acad HS	35.4	37.2	36.3	39.6	35.0	36.5
North Forest HS	29.2	29.4	30.8	30.7	29.9	28.2
North Houston EC HS	39.8	38.6	42.5	43.3	38.5	37.0
Reagan HS	35.5	35.1	36.2	37.9	35.4	32.6
Scarborough HS	31.9	30.4	33.1	34.0	31.2	29.1
Sharpstown HS	30.9	29.8	32.5	31.7	30.1	28.2
Sharpstown Intern'l	35.0	34.4	39.8	39.0	34.3	32.7
South EC HS	35.9	37.0	37.8	37.9	33.8	35.2
Sterling HS	31.6	30.1	32.1	31.6	30.2	28.0
TCAH	*	*	*	*	*	*
Waltrip HS	33.6	32.7	35.0	34.8	33.8	31.5
Washington HS	31.9	30.8	34.0	33.2	31.4	28.8
Westbury HS	32.0	30.9	33.0	32.7	31.4	29.1
Westside HS	37.1	37.5	37.6	38.9	36.4	35.4
Wheatley HS	29.9	28.8	32.4	31.5	30.0	27.2
Worthing HS	30.2	29.3	32.4	31.3	30.3	28.4
Yates HS	31.1	31.2	32.0	32.5	30.3	29.8
HISD	34.9	34.5	36.6	36.9	34.4	32.8

Table 10. PSAT Mean Reading, Math, and Writing Scores by School: Sophomores, Fall 2013 & 2014

School	Reading		Math		Writing	
	2013	2014	2013	2014	2013	2014
Austin HS	33.1	31.7	36.5	35.3	32.9	30.3
Beechnut Acad	34.1	31.1	33.0	30.5	30.5	30.0
Bellaire HS	45.3	43.0	46.8	44.8	44.2	41.3
Carnegie HS	57.8	57.2	58.5	58.8	54.9	54.7
Challenge EC HS	46.4	44.7	46.9	47.9	44.7	44.7
Chavez HS	35.2	34.8	39.1	38.9	35.2	32.8
Davis HS	34.0	33.3	36.3	37.1	34.3	31.8
DeBakey HS	53.8	53.4	57.9	60.9	53.2	54.0
E-STEM Central HS	39.4	32.9	38.6	39.1	39.6	36.0
E-STEM West HS	37.0	35.8	42.4	40.3	37.3	35.2
East EC HS	43.8	43.6	45.7	46.8	42.9	42.1
Eastwood Acad HS	43.2	42.0	45.5	47.8	41.9	40.6
Energy Inst HS		41.4		45.1		39.3
Furr HS	33.5	34.2	35.3	36.9	32.9	31.1
HAIS HS	42.1	41.6	43.2	42.4	41.5	39.2
Hope Acad HS	30.1		33.7		30.5	
Houston ISD	37.6	36.9	39.2	39.6	37.0	35.5
Houston MSTC HS	33.2	32.9	34.8	36.3	32.6	31.5
HSPVA	51.3	52.9	50.1	51.9	50.3	51.6
Jones HS	31.9	35.8	35.1	41.3	31.5	37.0
Jordan HS	35.6	35.0	37.4	38.6	35.8	33.9
Kashmere HS	32.5	32.2	34.9	33.4	32.1	30.0
Lamar HS	42.6	41.1	41.8	42.1	42.4	40.0
LECJ HS	38.3	39.3	38.6	41.7	37.7	38.5
Lee HS	32.9	30.7	35.5	33.3	32.2	29.5
Leland YMCPA	38.5	39.9	43.1	45.4	41.1	41.6
Long Acad	36.4	37.4	40.7	41.9	36.3	33.8
Madison HS	33.4	31.7	35.8	35.0	32.9	30.2
Middle College HS - Fraga		31.0		35.1		30.5
Milby HS	33.8	32.9	36.0	36.6	33.3	31.9
Mount Carmel Acad HS	39.6	38.7	40.6	40.9	38.6	37.5
North Forest HS	30.2	30.5	30.7	31.3	30.8	29.6
North Houston EC HS	40.0	41.6	43.7	47.2	38.7	40.6
Reagan HS	38.1	37.5	38.0	40.2	37.3	35.9
Scarborough HS	34.2	33.4	33.7	36.4	32.9	31.3
Sharpstown HS	33.2	31.5	36.8	34.1	32.5	30.3
Sharpstown Intern'l	36.5	36.4	40.3	41.5	36.5	35.4
South EC HS	39.7	36.8	39.4	38.6	38.6	37.1
Sterling HS	33.9	32.4	33.8	33.1	32.0	30.1
TCAH	*	50.1	*	51.6	*	50.1
Waltrip HS	36.0	35.3	39.0	37.7	35.6	33.4
Washington HS	33.4	33.2	34.5	35.6	33.5	32.1
Westbury HS	33.3	33.0	33.9	34.8	32.9	31.8
Westside HS	41.6	40.0	42.5	41.8	40.0	38.2
Wheatley HS	31.6	30.6	31.9	32.9	30.8	28.6
Worthing HS	31.3	31.0	32.6	33.2	31.4	29.7
Yates HS	33.5	31.5	35.2	32.6	32.9	31.1
YWCPA	40.5	39.7	39.6	41.8	41.7	40.9
HISD	37.6	36.9	39.2	39.6	37.0	35.5

*Less than 5 students tested

Table 11. PSAT Mean Reading, Math, and Writing Scores by School: Juniors, Fall 2013 & 2014

School	Reading		Math		Writing	
	2013	2014	2013	2014	2013	2014
Austin HS	34.8	34.6	38.8	38.9	35.0	34.0
Beechnut Acad		31.9		35.4		32.6
Bellaire HS	52.4	49.2	54.5	51.4	51.8	48.9
Carnegie HS	63.5	61.9	64.1	63.6	60.4	60.4
Challenge EC HS	50.8	49.4	52.4	51.6	48.8	47.9
Chavez HS	37.6	36.7	41.9	41.4	37.1	36.0
Davis HS	37.1	35.7	40.5	39.4	36.7	34.4
DeBakey HS	59.7	60.3	62.7	65.4	58.0	61.2
E-STEM Central HS	37.5	42.8	38.3	44.5	42.1	44.2
E-STEM West HS	35.1	39.7	40.7	44.8	37.9	37.5
East EC HS	44.8	46.9	50.3	49.9	45.1	46.2
Eastwood Acad HS	43.0	46.8	46.3	52.9	42.1	46.5
Furr HS	35.4	35.5	37.0	38.5	35.7	34.5
HAIS HS	43.4	45.3	44.9	46.6	42.6	44.2
Houston ISD	39.9	39.9	42.5	42.9	39.4	39.1
Houston MSTC HS	34.8	33.9	38.8	37.6	34.3	33.4
HSPVA	55.2	55.0	54.5	56.3	54.3	54.8
Jones HS	32.3	39.1	36.1	42.1	32.6	40.4
Jordan HS	37.7	36.5	40.7	40.0	37.6	36.2
Kashmere HS	32.3	31.4	37.0	33.5	33.1	30.9
Lamar HS	45.7	45.9	45.8	47.5	44.2	44.6
LECJ HS	43.2	42.3	43.9	44.5	40.5	40.9
Lee HS	34.3	32.9	37.7	35.3	34.0	31.4
Leland YMCPA	42.2	42.3	49.2	49.0	41.5	42.4
Long Acad		38.3		43.8		37.8
Madison HS	34.6	35.0	37.2	36.9	34.3	33.5
Middle College HS - Fraga		31.8		34.2		31.8
Milby HS	35.6	34.8	39.6	38.5	35.2	34.3
Mount Carmel Acad HS	40.6	40.6	42.6	43.2	41.6	41.2
North Forest HS	33.3	31.7	33.4	33.1	33.6	30.8
North Houston EC HS	44.0	41.9	45.9	46.2	43.8	41.8
Reagan HS	38.4	40.1	40.5	43.9	37.9	39.3
Scarborough HS	37.6	36.3	37.7	38.6	37.0	34.9
Sharpstown HS	35.1	34.8	39.8	39.5	34.4	33.2
Sharpstown Intern'l	38.7	38.5	42.5	43.8	38.2	37.4
South EC HS	44.3	41.5	45.9	43.8	43.0	41.2
Sterling HS	34.0	33.2	34.2	35.3	33.8	31.3
TCAH	49.6	51.3	49.3	49.6	50.2	48.4
Waltrip HS	38.2	37.8	41.2	41.9	37.8	36.6
Washington HS	36.0	34.7	39.7	37.7	35.4	34.8
Westbury HS	34.1	35.0	35.2	36.7	33.8	33.9
Westside HS	44.6	44.6	46.2	47.6	43.0	43.2
Wheatley HS	31.9	32.0	35.0	33.9	31.9	31.9
Worthing HS	34.4	33.1	36.7	35.2	34.6	33.4
Yates HS	34.0	34.4	35.8	34.6	34.4	33.2
YWCPA	41.3	42.2	43.2	44.7	41.1	41.6
Houston ISD	39.9	39.9	42.5	42.9	39.4	39.1

Table 12. PSAT Mean Reading, Math, and Writing Scores by School: Combined Freshmen, Sophomores and Juniors 2013 & 2013

School	Reading		Math		Writing	
	2013	2014	2013	2014	2013	2014
Austin HS	32.7	32.1	35.7	35.3	32.2	30.5
Beechnut Acad	34.1	31.4	33.0	32.3	30.5	31.0
Bellaire HS	44.0	43.9	45.4	45.7	43.0	42.4
Carnegie HS	56.8	56.7	57.6	59.0	54.1	54.8
Challenge EC HS	46.3	45.1	47.4	47.3	44.8	44.1
Chavez HS	35.1	34.2	39.0	38.5	34.9	32.9
Davis HS	34.1	33.2	36.4	36.5	34.2	31.7
DeBakey HS	54.2	54.4	58.0	59.6	53.0	54.3
E-STEM Central HS	34.8	31.9	36.2	35.5	35.8	34.0
E-STEM West HS	35.4	35.1	40.1	39.6	36.0	33.6
East EC HS	43.0	43.4	46.5	46.9	42.9	42.5
Eastwood Acad HS	41.7	42.5	44.8	47.7	41.0	41.2
Energy Inst HS	38.2	40.3	39.5	43.3	37.1	37.9
Furr HS	33.2	33.7	35.3	36.4	33.1	31.7
HAIS HS	41.2	42.8	41.9	43.5	40.9	40.7
Hope Acad HS	30.1		33.7		30.5	
Houston MSTC HS	33.0	32.1	35.6	35.3	32.5	31.0
HSPVA	51.9	51.7	50.8	51.5	51.1	50.7
Jones HS	31.6	33.9	34.8	37.4	31.6	32.1
Jordan HS	35.6	34.6	38.1	37.6	35.8	33.5
Kashmere HS	31.8	31.0	34.9	32.7	31.6	29.6
Lamar HS	42.4	41.5	42.2	42.9	41.4	40.4
LECJ HS	39.6	40.0	40.3	42.2	38.5	38.6
Lee HS	32.6	31.1	35.3	33.8	32.2	29.8
Leland YMCPA	39.8	39.2	44.9	42.2	40.4	37.7
Long Acad	35.1	37.0	39.0	41.5	34.9	34.9
Madison HS	33.0	32.4	35.3	35.1	32.6	30.7
Middle College HS - Fraga		30.9		33.7		30.3
Milby HS	33.5	32.7	36.4	36.3	33.0	31.7
Mount Carmel Acad HS	38.3	38.9	39.6	41.2	38.1	38.4
North Forest HS	30.7	30.4	31.4	31.6	31.3	29.4
North Houston EC HS	41.1	40.6	43.9	45.5	40.1	39.6
Reagan HS	37.2	37.3	38.0	40.4	36.8	35.6
Scarborough HS	34.1	33.0	34.4	36.0	33.2	31.4
Sharpstown HS	32.9	31.4	36.0	34.2	32.1	30.0
Sharpstown Intern'l	36.5	36.4	40.7	41.4	36.1	35.1
South EC HS	40.3	37.7	41.5	39.1	38.8	36.7
Sterling HS	32.9	31.6	33.1	33.0	31.6	29.5
TCAH	50.5	50.8	48.8	50.1	50.1	48.6
Waltrip HS	35.7	35.1	38.0	37.9	35.5	33.7
Washington HS	33.6	32.6	35.8	35.2	33.2	31.5
Westbury HS	33.1	32.7	34.0	34.4	32.6	31.2
Westside HS	40.5	40.2	41.5	42.2	39.3	38.4
Wheatley HS	31.1	30.4	33.1	32.6	30.9	29.1
Worthing HS	31.5	30.7	33.4	32.8	31.7	30.0
Yates HS	32.7	32.2	34.1	33.1	32.2	31.1
YWCPA	39.9	40.8	40.1	42.4	40.1	40.4
Houston ISD	37.2	36.8	39.1	39.4	36.6	35.4

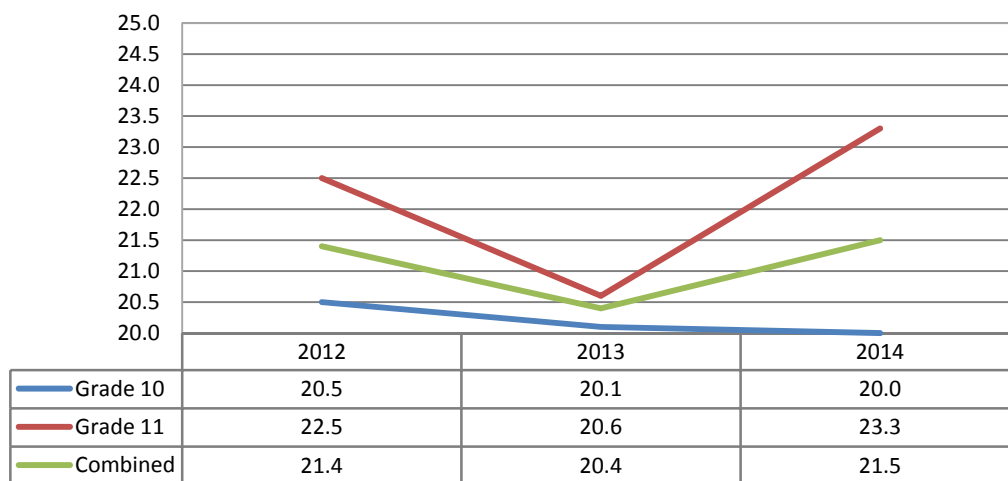
College Readiness Benchmark Performance

The College Readiness Benchmark has been added to PSAT/NMSQT reporting to help educators have a better understanding of which students are on track to have the skills necessary for success in college. The PSAT/NMSQT College Readiness Benchmark was developed based on the SAT College Readiness Index, which was computed as part of an SAT validity study. In 2013, the methodology for calculating the PSAT/NMSQT changed to parallel the calculation for SAT college readiness benchmarks. For both sophomores and juniors, the PSAT/NMSQT benchmarks are the scores associated with a 65-percent likelihood of achieving a first year college grade point average of 2.67 or higher. The score needed for juniors has been identified as a combined score (reading, mathematics, and writing) of 142, and the combined score for sophomores is 133. Currently, there is no benchmark score for freshmen.

The 2013 and 2014 PSAT performance of sophomores, juniors, and combined grade levels was evaluated for the College Board College Readiness Benchmark, and results for each campus are presented in **Table 13**.

Figure 8 shows the percent of students who met the College Readiness Benchmark, for 2012 thru 2014.

**Figure 8. Percent Meeting College Readiness Benchmark
2013 - 2014**



- The percent of students meeting the College Readiness Benchmark increased at grade 11 for a three-year high of 23.3 percent.

Table 13. Percent of Sophomores and Juniors Meeting College Readiness Benchmark, Fall 2013 & 2014

School	Sophomores		Juniors		Combined	
	2013	2014	2013	2014	2013	2014
Austin HS	6	3	3	6	4	4
Beechnut Acad	0	4		0	0	2
Bellaire HS	50	42	65	54	55	48
Carnegie HS	97	98	100	97	98	98
Challenge EC HS	57	57	69	59	63	58
Chavez HS	10	11	11	11	11	11
Davis HS	3	4	8	6	6	5
DeBaKey HS	98	95	95	98	97	97
E-STEM Central HS	19	13	0	33	11	21
E-STEM West HS	13	14	9	17	11	15
East EC HS	47	47	44	47	45	47
Eastwood Acad HS	41	44	25	57	33	49
Energy Inst HS		30				30
Furr HS	6	7	5	7	6	7
HAIS HS	38	30	27	41	33	35
Hope Acad HS	0				0	
Houston MSTC HS	3	5	4	4	3	4
HSPVA	79	81	80	84	79	82
Jones HS	3	10	3	29	3	21
Jordan HS	11	11	7	9	9	10
Kashmere HS	3	2	2	3	3	3
Lamar HS	38	33	38	46	38	39
LECJ HS	10	27	17	19	13	22
Lee HS	5	2	4	5	5	4
Leland YMCPA	19	38	28	29	24	33
Long Acad	11	10		14	11	12
Madison HS	3	2	4	3	4	3
Middle College HS - Fraga		0		0		0
Milby HS	7	5	6	8	6	7
Mount Carmel Acad HS	22	27	15	16	19	22
North Forest HS	1	2	2	1	1	1
North Houston EC HS	21	33	30	23	25	29
Reagan HS	16	18	12	20	14	19
Scarborough HS	3	6	8	11	5	9
Sharpstown HS	7	5	4	4	6	4
Sharpstown Intern'l	11	15	10	13	10	14
South EC HS	17	8	32	16	25	11
Sterling HS	5	3	4	2	5	3
TCAH	*	70	65	65	65	66
Waltrip HS	14	13	12	16	13	14
Washington HS	10	6	13	12	11	9
Westbury HS	5	7	1	4	3	6
Westside HS	35	29	35	40	35	34
Wheatley HS	2	2	2	2	2	2
Worthing HS	1	3	5	2	3	2
Yates HS	3	2	2	3	2	3
YWCPA	26	24	13	21	19	22
Houston ISD	20	20	21	23	20	22

* Less than 5 students tested

Eighth-Grade Readiness Assessment

Administration and Scoring

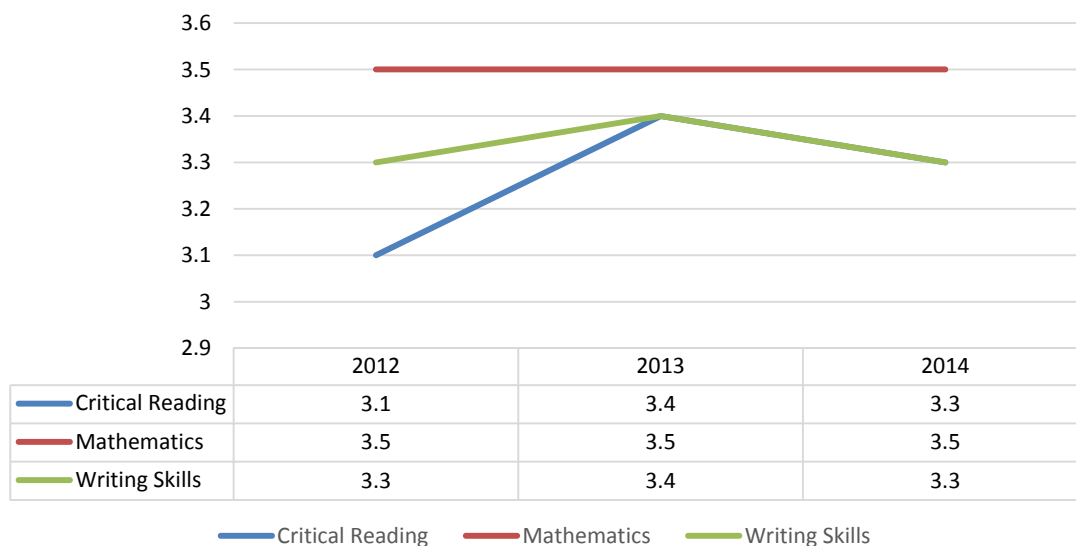
The Readiness assessment from the College Board is a low-stakes middle school assessment which serves as the first step on the “College Readiness Pathway” preparing students for the PSAT/NMSQT and for the Scholastic Aptitude Test (SAT). In addition, the Readiness can be used to provide information on achievement gaps to educators so that they may help students graduate from high school college-ready. Like the PSAT/NMSQT and SAT, the Readiness has three sections: critical reading, mathematics, and writing skills.

District-wide Results

The fourth administration of the Readiness in HISD took place in October and November of 2014. The results of the Readiness are provided below for the fall 2014 administration. A total of 10,370 eighth graders took the Readiness in the fall of 2014. **Table 16** provides results for HISD eighth graders for the 2013 and 2014 administration.

Figure 9 shows the average Readiness scores for all students for fall 2013 thru 2014.

Figure 9. Comparison of Average Readiness Scores for All Students, Fall 2012-2014



- While there is a slight decline in average Readiness scores for all students in reading and writing, the average math scores have remained the same over three years, from 2012 to 2014.

Student Group Performance

The average score for reading, mathematics, and writing scores were calculated and analyzed to describe the performance of specific student groups. The results for the fall 2013 and 2014 ReadStep assessment are presented in **Table 14**.

Table 14. ReadStep Mean Scores by Student Group, Fall 2013 & 2014						
Student Group	Reading		Math		Writing	
	2013	2014	2013	2014	2013	2014
All	3.4	3.3	3.5	3.5	3.4	3.3
African American	3.3	3.2	3.2	3.2	3.3	3.2
Asian American	4.4	4.4	4.9	4.9	4.2	4.1
Hispanic	3.3	3.2	3.4	3.4	3.3	3.2
White	4.5	4.5	4.4	4.5	4.2	4.3
Female	3.5	3.4	3.4	3.5	3.5	3.4
Male	3.4	3.3	3.5	3.5	3.3	3.2

- Given that ReadStep is a predictor of PSAT performances, it is concerning that both the reading and writing performance decreased by 0.1 point from the prior year.

The fall 2014 ReadStep mean scores for the reading, mathematics, and writing sections were also examined to determine the relationship between the performances of student ethnic groups and gender. Specifically, the interactions between student racial/ethnic groups, African American, Asian, Hispanic, and White with gender were examined. These results are presented in **Table 15**.

Table 15. Fall 2013 & 2014 ReadStep Mean Reading, Math, and Writing Scores by Interaction of Student Ethnic Group and Gender						
Student Group	Reading		Math		Writing	
	2013	2014	2013	2014	2013	2014
African Amer. Female	3.4	3.3	3.2	3.2	3.4	3.3
African Amer. Male	3.2	3.1	3.2	3.2	3.1	3.0
Asian American Female	4.5	4.4	4.8	4.8	4.3	4.2
Asian American Male	4.4	4.3	4.9	5.0	4.1	4.0
Hispanic Female	3.3	3.3	3.3	3.4	3.4	3.3
Hispanic Male	3.2	3.1	3.4	3.4	3.2	3.1
White Female	4.6	4.6	4.3	4.4	4.3	4.4
White Male	4.5	4.4	4.5	4.6	4.1	4.2

- For 2014, in reading, White Female students had the highest score of 4.6, whereas both African American and Hispanic Male students had the lowest score of 3.1. In the same period, in math, Asian American Male students had the highest score of 5.0, whereas both African American Male and Female students had the lowest score of 3.2. During the same time, in writing, White Female students had the highest score of 4.4, whereas African American Male students had the lowest score of 3.0.

Table 16. Readiness Participation and Mean Scores by School, Fall 2013 & 2014								
Schools	N Tested		Reading		Math		Writing	
	2013	2014	2013	2014	2013	2014	2013	2014
Attucks	121	131	3.0	2.8	3.0	3.0	3.0	2.9
Black	207	0	3.2		3.2		3.2	
Briarwood	47	47	4.4	4.3	4.4	4.7	4.4	4.0
Burbank	442	413	3.3	3.2	3.6	3.6	3.4	3.4
Clifton	301	326	3.3	3.1	3.6	3.4	3.3	3.1
Dady	280	0	2.9		2.9		2.9	
Dowling	346	336	3.1	2.8	3.3	3.1	3.2	2.9
Edison	226	203	3.0	3.2	3.0	3.3	3.0	3.1
Energized for Excel. Academy	114	118	3.4	3.1	3.9	3.7	3.5	3.2
Energized for Excel. Central	45	8	3.4	3.4	3.2	3.0	3.3	3.1
Energized for STEM West	73	50	3.3	3.1	3.5	3.6	3.3	3.0
Fleming	0	144		2.7		2.8		2.9
Fondren	0	287		2.7		2.8		2.9
Fonville	336	359	3.1	3.1	3.1	3.1	3.0	3.0
Grady	168	182	3.8	3.6	3.5	3.5	3.6	3.4
Gregory-Lincoln	84	100	2.8	3.0	3.0	3.0	3.0	3.1
Hamilton	377	404	3.7	3.3	3.7	3.4	3.6	3.3
Hartman	409	439	3.2	3.0	3.3	3.3	3.1	3.1
Henry	322	283	2.9	2.8	3.0	2.9	2.8	2.7
Hogg	215	239	3.2	3.0	3.2	3.1	3.1	3.1
Holland	197	204	3.1	3.0	3.2	3.2	3.0	3.0
Jackson	301	300	3.1	3.0	3.1	3.2	3.0	3.0
Johnston	514	573	3.8	3.7	3.6	3.5	3.7	3.6
Key	202	0	3.2		3.0		3.1	
Lanier	454	456	4.5	4.6	4.5	4.7	4.4	4.3
Long Academy	274	256	3.0	2.7	3.1	3.0	3.0	2.8
Marshall	263	0	3.1		3.0		3.1	
McReynolds	0	180		2.9		3.1		2.9
Ortiz	321	353	3.0	2.9	3.2	3.2	3.1	3.0
Pershing	540	543	3.7	3.7	3.7	3.8	3.6	3.6
Pilgrim	79	73	3.0	3.2	3.5	3.7	3.3	3.3
Pin Oak	380	393	4.5	4.5	4.5	4.7	4.2	4.4
Project Chrysalis	67	66	3.7	3.6	3.9	3.9	3.9	3.6
Reagan	79	106	3.1	3.1	2.7	3.0	3.0	2.9
Revere	354	126	3.2	3.7	3.3	3.9	3.2	3.4
Rice	153	140	3.6	3.6	3.7	3.7	3.6	3.6
Rogers	108	127	5.6	5.5	6.1	5.9	5.3	5.3
Rusk	51	47	3.6	3.2	3.8	3.4	3.8	3.4
Sharpstown International	159	176	3.2	3.3	3.5	3.8	3.3	3.5
Stevenson	454	435	3.5	3.4	3.8	3.6	3.5	3.4
Thomas	130	144	3.0	2.8	3.1	3.0	2.9	2.9
Welch	316	291	3.0	2.9	3.0	2.8	3.1	2.9
Westbriar	402	365	3.8	3.8	3.8	4.0	3.7	3.6
Wharton	21	19	4.1	4.1	4.6	4.3	4.3	4.2
Williams	132	0	2.9		3.1		3.0	
Woodson	96	126	2.9	2.7	2.6	2.7	2.7	2.8
Young Men's College Prep	99	94	3.6	3.8	3.9	4.2	3.5	3.6
Young Scholars Academy	10	16	3.7	3.4	3.5	3.7	3.5	3.5
Young Women's College Prep	101	111	3.9	4.0	3.8	3.8	3.9	3.9
HISD	10,370	9,876	3.4	3.3	3.5	3.5	3.4	3.3

Appendix A: HISD PSAT Mean Reading, Math, and Writing Scores for Grades 9-11, Fall 2005-2014

PSAT Mean Reading, Math, and Writing Scores by Student Group: Freshmen, Sophomores, and Juniors, Fall 2005-2014												
	<u>9th Grade</u>			<u>10th Grade</u>			<u>11th Grade</u>			<u>Combined</u>		
<u>Year</u>	<u>Reading</u>	<u>Math</u>	<u>Writing</u>	<u>Reading</u>	<u>Math</u>	<u>Writing</u>	<u>Reading</u>	<u>Math</u>	<u>Writing</u>	<u>Reading</u>	<u>Math</u>	<u>Writing</u>
2005	Not Tested			37.3	38.5	41.6	40.2	41.5	44.2	38.5	39.8	42.7
2006				37.5	39.2	36.6	41.5	42.8	40.7	39.2	40.8	38.3
2007				36.9	38.7	37.1	40.7	42.5	40.7	38.6	40.4	38.7
2008				36.3	39.5	37.4	39.8	42.6	41.0	37.8	40.8	38.9
2009				37.2	39.8	37.2	40.0	43.1	40.1	38.4	41.2	38.4
2010	34.7	37.8	33.6	37.1	40.2	35.5	40.4	43.4	38.8	37.1	40.2	35.7
2011	34.7	36.1	35.0	37.0	39.1	36.7	40.1	42.3	39.8	37.0	38.9	36.9
2012	36.2	36.9	36.3	37.9	39.2	38.2	40.9	42.5	41.0	38.1	39.2	38.2
2013	34.9	36.6	34.4	37.6	39.2	37.0	39.9	42.5	39.4	37.2	39.1	36.6
2014	34.5	36.9	32.8	36.9	39.6	35.5	39.9	42.9	39.1	36.8	39.4	35.4

Appendix B: HISD PSAT Mean Reading, Math, and Writing Scores by Interaction of Student Ethnicity and Gender for Grades 9-11 and Combined, Fall 2013 and 2014

PSAT Mean Reading, Math, and Writing Scores by Interaction of Student Ethnic Group and Gender: Freshmen, Sophomores, Juniors, & Combined, Fall 2013 & 2014

Student Group	2014											
	Freshmen			Sophomores			Juniors			Combined		
	Reading	Math	Writing	Reading	Math	Writing	Reading	Math	Writing	Reading	Math	Writing
Afr. Amer. Female	34.0	34.5	32.5	35.8	36.6	35.0	38.5	39.2	38.0	35.8	36.5	34.8
Afr. Amer. Male	32.0	34.1	30.5	34.5	36.4	32.9	36.3	38.7	35.4	34.0	36.1	32.6
Asian Am. Female	46.7	50.0	45.1	48.2	53.3	48.0	54.2	58.7	55.2	49.5	53.8	49.2
Asian Am. Male	44.6	50.9	42.5	47.8	54.7	46.3	51.0	57.7	49.8	47.7	54.3	46.1
Hispanic Female	34.0	36.3	32.4	35.8	38.4	34.6	38.3	41.0	37.6	35.8	38.3	34.6
Hispanic Male	32.6	36.0	30.8	35.1	39.2	33.3	37.9	42.6	36.7	34.8	38.7	33.1
White Female	45.7	44.7	44.1	48.6	47.9	47.7	51.5	51.9	50.9	48.5	48.0	47.5
White Male	43.7	45.5	40.8	47.2	49.1	44.5	51.3	54.7	50.1	47.2	49.5	44.9
2013												
Afr. Amer. Female	34.3	35.1	34.0	36.7	36.9	36.5	39.0	39.7	38.5	36.4	37.0	36.2
Afr. Amer. Male	33.0	34.6	32.3	34.6	35.9	34.0	36.5	39.0	36.4	34.5	36.2	34.0
Asian Am. Female	46.7	50.5	45.3	51.4	55.1	49.8	51.6	55.6	50.1	49.9	53.8	48.4
Asian Am. Male	44.8	50.3	43.1	46.7	53.0	44.4	50.5	57.5	49.1	47.3	53.6	45.5
Hispanic Female	34.5	36.2	34.2	36.5	38.1	36.4	38.5	40.9	38.3	36.4	38.2	36.1
Hispanic Male	33.4	36.0	33.0	36.1	38.6	35.4	38.0	41.6	37.3	35.5	38.3	34.9
White Female	44.2	42.9	43.5	48.2	47.3	47.1	52.7	52.6	51.9	48.1	47.3	47.3
White Male	43.4	43.9	42.1	47.7	49.1	46.3	51.2	53.2	49.2	47.2	48.4	45.7