

MEMORANDUM

April 3, 2020

TO: Board Members

FROM: Grenita Lathan, Ph.D.
Interim Superintendent of Schools

SUBJECT: **PSAT 8/9 & PSAT/NMSQT FALL 2019**

CONTACT: Allison Matney, 713-556-6700

This report analyzes the participation and performance of Houston Independent School District (HISD) students who took the fall 2019 administration of the Preliminary SAT for students in grades eight and nine (PSAT 8/9) and the Preliminary SAT/National Merit Scholarship Qualifying Test (PSAT/NMSQT) assessments offered by the College Board.

Key findings include:

- Although HISD participation rates on the PSAT 8/9 for grade 8 increased, participation rates for grade 9 on the PSAT 8/9 and for grades ten and eleven on the PSAT/NMSQT decreased from 2015 to 2019.
- In 2019, 82 percent of HISD eighth grade students and 78 percent of ninth grade students took the PSAT 8/9.
- In 2019, 79 percent of tenth grade students and 76 percent of eleventh grade students took the PSAT/NMSQT.
- Mean math scores were higher than Evidence-Based Reading and Writing (ERW) scores on the PSAT 8/9 for both grade levels.
- Mean ERW scores were higher than math scores on the PSAT/NMSQT for tenth and eleventh grade students.
- On the PSAT 8/9, grade 8 mean total scores increased 12 scaled-score points from 2018 to 2019, exceeding the 11 scaled-score points by the state and 3 scaled-score points by the total group, thus narrowing the gap between district and state/total group performance.
- On the PSAT 8/9, grade 9 mean total scores increased 7 scaled-score points from 2018 to 2019, exceeding the 2 scaled-score points by the total group, thus narrowing the gap.
- The percentage of students meeting College and Career Readiness (CCR) Benchmarks increased compared to last year for eighth grade, as well as tenth and eleventh grade students meeting the ERW CCR benchmarks.

Should you have any further questions, please contact Allison Matney in Research and Accountability at 713-556-6700.

A handwritten signature in cursive script, appearing to read "Loretta Ashman".

GL

Attachment

cc: Superintendent's Direct Reports
Area Superintendents
School Support Officers
High School Principals
Middle School Principals
Montra Rogers
Jharrett Bryantt



RESEARCH

Educational Program Report

PSAT 8/9 & PSAT/NMSQT FALL 2019



2020 BOARD OF EDUCATION

Susan Deigaard
President

Wanda Adams
First Vice President

Judith Cruz
Second Vice President

Patricia Allen
Secretary

Daniela Hernandez
Assistant Secretary

Katherine Blueford-Daniels
Holly Maria Flynn Vilaseca
Elizabeth Santos
Anne Sung

Grenita Lathan, Ph.D.
Interim Superintendent of Schools

Allison Matney, Ed.D.
Officer
Department of Research and Accountability

Laurie S. Zimmerman, Ph.D.
Sr. Research Specialist

Zack Bigner, Ed.D.
Research Manager

Houston Independent School District
Hattie Mae White Educational Support Center
4400 West 18th Street Houston, Texas 77092-8501

www.HoustonISD.org

It is the policy of the Houston Independent School District not to discriminate on the basis of age, color, handicap or disability, ancestry, national origin, marital status, race, religion, sex, veteran status, political affiliation, sexual orientation, gender identity and/or gender expression in its educational or employment programs and activities.

PSAT 8/9 and PSAT/NMSQT Results: Fall 2019

Executive Summary

Program Description

The Preliminary SAT for students in grades eight and nine (PSAT 8/9) and the Preliminary SAT/National Merit Scholarship Qualifying Test (PSAT/NMSQT) are national examinations offered by the College Board. These assessments measure progress toward college and career readiness. In fall 2015, the College Board redesigned the PSAT/NMSQT and introduced the PSAT 8/9 for the first time. All comparisons reflect the newly designed PSAT/NMSQT and PSAT 8/9.

Highlights

- HISD participation rates on both PSAT 8/9 and PSAT/NMSQT increased from 2015 to 2019 for eighth grade students but declined for all other grade levels.
- On the PSAT 8/9, grade 8 mean total scores increased 12 scaled-score points from 2018 to 2019, exceeding the 11 scaled-score points by the state and 3 scaled-score points by the total group, thus narrowing the gap between district and state/total group performance.
- On the PSAT 8/9, grade 9 mean total scores increased 7 scaled-score points from 2018 to 2019, exceeding the 2 scaled-score points by the total group, thus narrowing the gap.
- Although average PSAT 8/9 and PSAT/NMSQT scores and scores by subject and grade level districtwide are lower than those of students in Texas and the total group (international and national testers), gaps in performance between the district and the total group narrowed in 2019 compared to 2015 for the mean total in grades 9, 10 and 11, the mean math score in grade 9 and 10, and the mean ERW scores in grades 9, 10 and 11. Moreover, gaps in performance between the district and state narrowed in 2019 for mean total and ERW scores in grades 9, 10 and 11 and math scores in grade 9.
- On the PSAT 8/9, the grade 8 mean total scores increased 12 scaled-score points from 2018 to 2019, exceeding the 11 scaled-score points by the state and the 3 scaled-score points by the total group, thus narrowing the gap between district and state/total group performance.
- For the 2019 PSAT 8/9 and the PSAT/NMSQT total scores and scores by subject and grade level, HISD Asian and White students scored higher on average than Hispanic or African American students.
- Mean math scores were higher than Evidence-Based Reading and Writing (ERW) scores on the PSAT 8/9 for both grade levels.
- Mean ERW scores were higher than math scores on the PSAT/NMSQT for tenth and eleventh grade students.
- The percentage of students meeting College and Career Readiness (CCR) Benchmarks increased compared to last year for eighth grade, as well as tenth and eleventh grade students meeting the ERW CCR benchmarks.

- Twenty-nine percent and 28 percent of students in grades 8 and 9 met both CCR benchmarks, and 23 percent and 22 percent of students in grades 10 and 11 met both CCR benchmarks in 2019, respectively.

Introduction

The SAT Suite of Assessments is an integrated system of tests that includes the SAT® (for students in grades 11 and 12), the Preliminary SAT/National Merit Scholarship Qualifying Test (PSAT/NMSQT®) and the PSAT™ 10 (for grades 10 and 11), and the PSAT™ 8/9 (for grades 8 and 9). The tests measure the same skills and knowledge in grade-appropriate ways. The PSAT 8/9 establishes a baseline measurement of college and career readiness as students enter high school. The PSAT/NMSQT measures the skills and knowledge that research shows are the most essential for college and career readiness and success and can qualify eligible students for scholarships through partnership with the National Merit Scholarship Corporation.¹

There are two section scores, Evidence-Based Reading and Writing (ERW) and Math. The ERW Section Score is comprised of the Reading Test Score and the Writing and Language Test Score. The Math Section Score is comprised of the Math Test Score. The Reading Test measures comprehension and reasoning skills and focuses on close reading of passages in a wide array of subject areas. The Writing and Language Test measures a range of skills including command of evidence, expression of ideas, and the use of Standard English conventions in grammar and punctuation. The Math Test covers a range of math practices, with an emphasis on problem solving, modeling, using tools strategically, and using algebraic structure. Each section score of the PSAT 8/9 ranges from 120 to 720, with the total score ranging from 240 to 1440.² For the PSAT/NMSQT, each section score ranges from 160 to 760, with the total score ranging from 320 to 1520.¹

The score report includes an indicator for each section, ERW and Mathematics, which shows whether a student's score meets the grade-level benchmark. These benchmarks allow students and educators to understand how students are progressing toward college readiness. This report analyzes the participation and performance of Houston Independent School District (HISD) students who took the fall 2019 administration of the PSAT 8/9 and the PSAT/NMSQT.

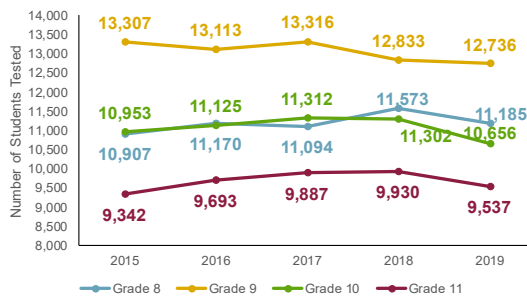
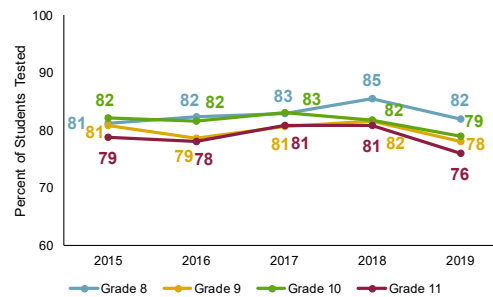
In 2015–2016, the College Board redesigned the PSAT/NMSQT and introduced the PSAT 8/9 for the first time. The goal of the redesign of the suite of assessments was to reflect what is taught in the classroom and assess skills that are the most accurate predictors of college and career readiness and success based on established research and evidence. All comparisons reflect the newly designed PSAT/NMSQT and the PSAT 8/9. In addition, comparisons are made to the state and “total group” which includes all national and international testers.

Results

PSAT 8/9 and PSAT/NMSQT Participation

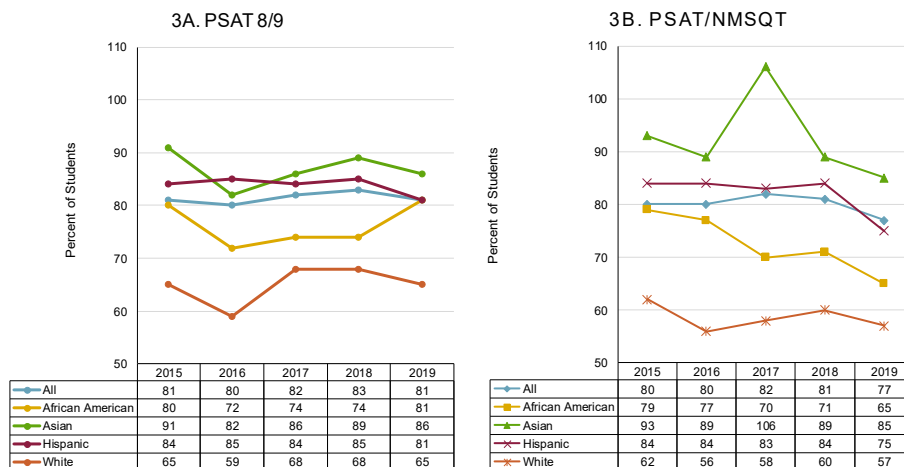
HISD launched the PSAT for All initiative in 2003 to enroll more students in Advanced Placement courses and prepare them to be successful on the SAT which is required by most colleges. The district-wide initiative enables all HISD tenth graders to take the PSAT/NMSQT for free. Since 2010, the initiative has expanded to include grades 8–10. **Figure 1** and **Figure 2** (p. 3) illustrate district-wide PSAT participation.

- For tenth grade students, 2019 marks the lowest number of participants at 10,656 compared to the last five years on the PSAT/NMSQT. For eleventh grade students, PSAT/NMSQT participation increased from 9,342 in 2015 to 9,537 in 2019, but a higher number of participants took the PSAT/NMSQT in 2016 through 2018 (Figure 1).
- The percentage of tenth grade students tested has declined from 2015 at 82 percent to 79 percent in 2019. Similarly, the percentage of eleventh grade students tested has decreased from 79 percent in 2015 to 76 percent in 2019 (Figure 2).
- The percentage of eighth grade students tested increased from 81 percent in 2015 to 82 percent in 2019, but the percentage of ninth grade students tested declined from 81 percent in 2015 to 78 percent in 2019.

Figure 1. PSAT Participation by Grade

Figure 2. PSAT Participation Rate by Grade


Sources: Figure 1, College Board Summary Report, August 2019–July 2020, 2/3/2020; *HISD PSAT 8/9 & PSAT/NMSQT Fall 2018 Report*; Figure 2, Fall PEIMS Extract, 2019; College Board Summary Report, August 2019–July 2020, 2/3/2020; *HISD PSAT 8/9 & PSAT/NMSQT Fall 2018 Report*

Figures 3A and 3B show the HISD PSAT participation rate by student group. Participation rates for each group were determined by dividing the number of students within the group who took the PSAT by the number of enrolled students within the group.

Figure 3A–3B. PSAT Participation Rate by Race/Ethnicity, 2015–2019


Sources: PSAT 8/9 Data File, 2/17/2020; Fall 2019 College Board PSAT/NMSQT Scores by Demographics-10th grade, 2/3/2020 and 11th grade, 1/27/2020; Fall PEIMS Extract, 2019; *HISD PSAT 8/9 & PSAT/NMSQT Fall 2018 Report*

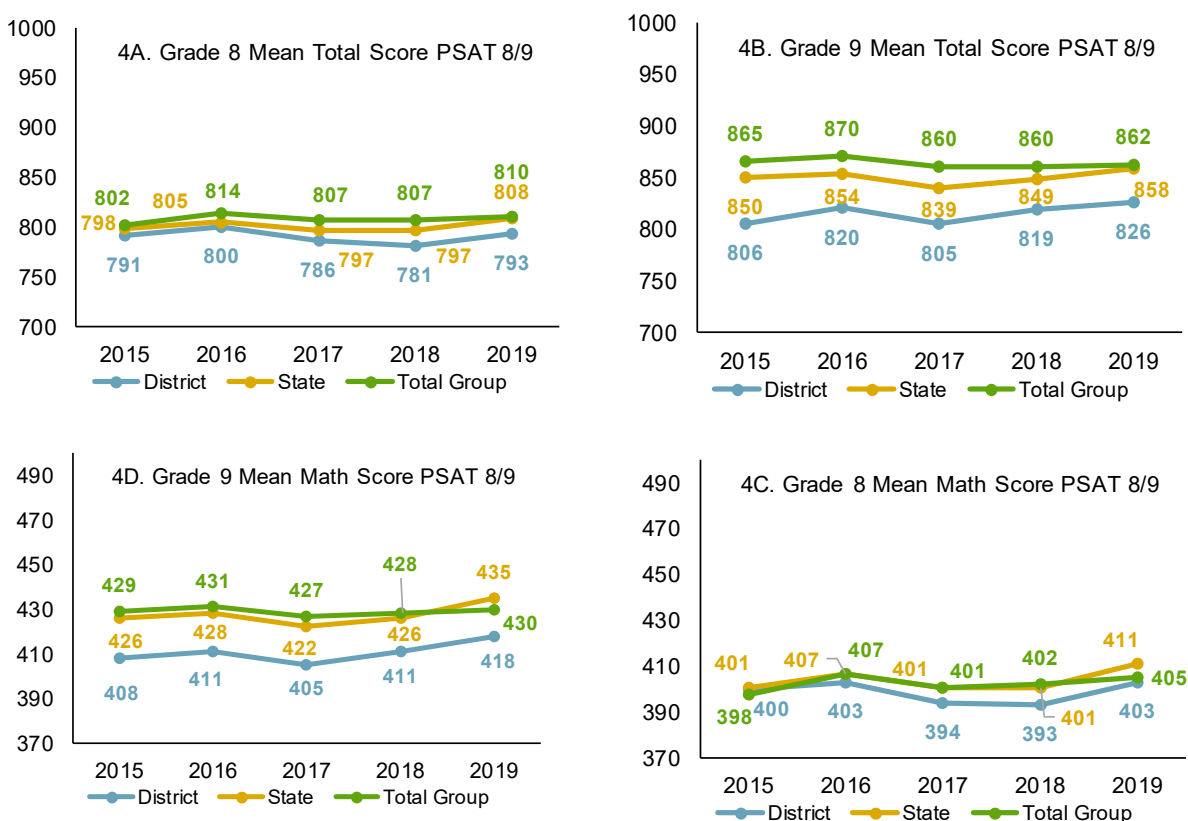
Note: Because demographic data are self-reported, percentages may exceed 100 percent. HISD Chancery Ethnicity was used for the PSAT 8/9 due to a high percentage of No Responses.

- For the PSAT 8/9, the participation rate **dropped** from 2015 to 2016 for all race/ethnicity groups shown except for the Hispanic group which **increased**, while participation for all students, African American, Asian, and White students **increased** 2016 to 2019.
- For the PSAT/NMSQT, the participation rate **increased** from 2015 to 2017 for all students and Asian students, while participation for all students and all student groups **decreased** from 2017 to 2019.

PSAT Performance

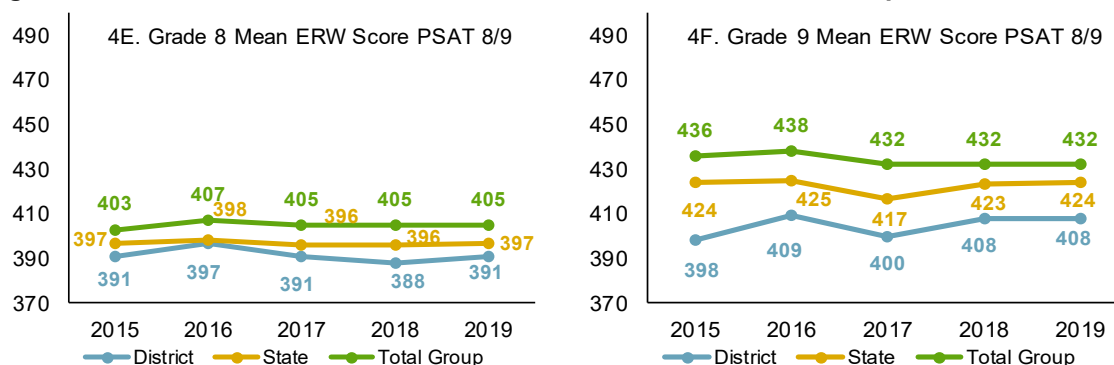
Figures 4A–4F show the average score by subject, grade level, and PSAT total score for 2015 to 2019 on the PSAT 8/9 comparing district, state, and total group (national and international) results.

Figures 4A–4D. Mean PSAT 8/9 Scores of District, State, and Total Group Students, 2015–2019



Sources: PSAT 8/9 2019 Fall Scores by Institution, 8th grade and 9th grade; *HISD PSAT 8/9 & PSAT/NMSQT Fall 2018 Report*

Note: ERW=Evidence-based reading and writing; Total group includes international test takers.

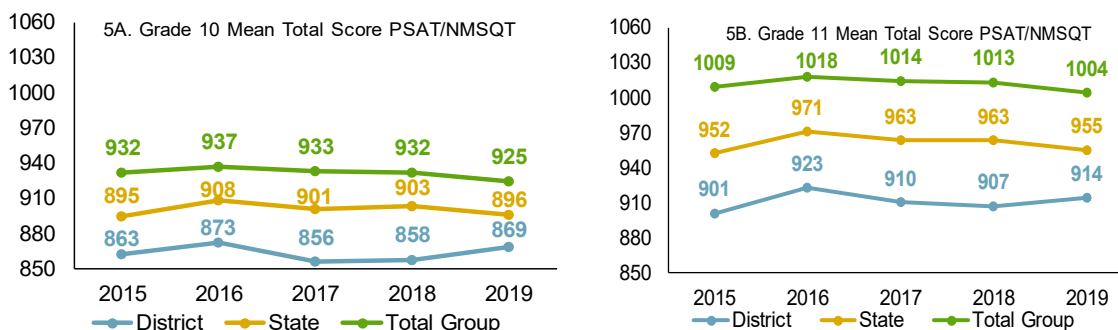
Figures 4E–4F. Mean PSAT 8/9 Scores of District, State, and Total Group Students, 2015–2019

Sources: PSAT 8/9 2019 Fall Scores by Institution, 8th grade and 9th grade; *HISD PSAT 8/9 & PSAT/NMSQT Fall 2018 Report*

Note: ERW=Evidence-based reading and writing; Total group includes International test takers.

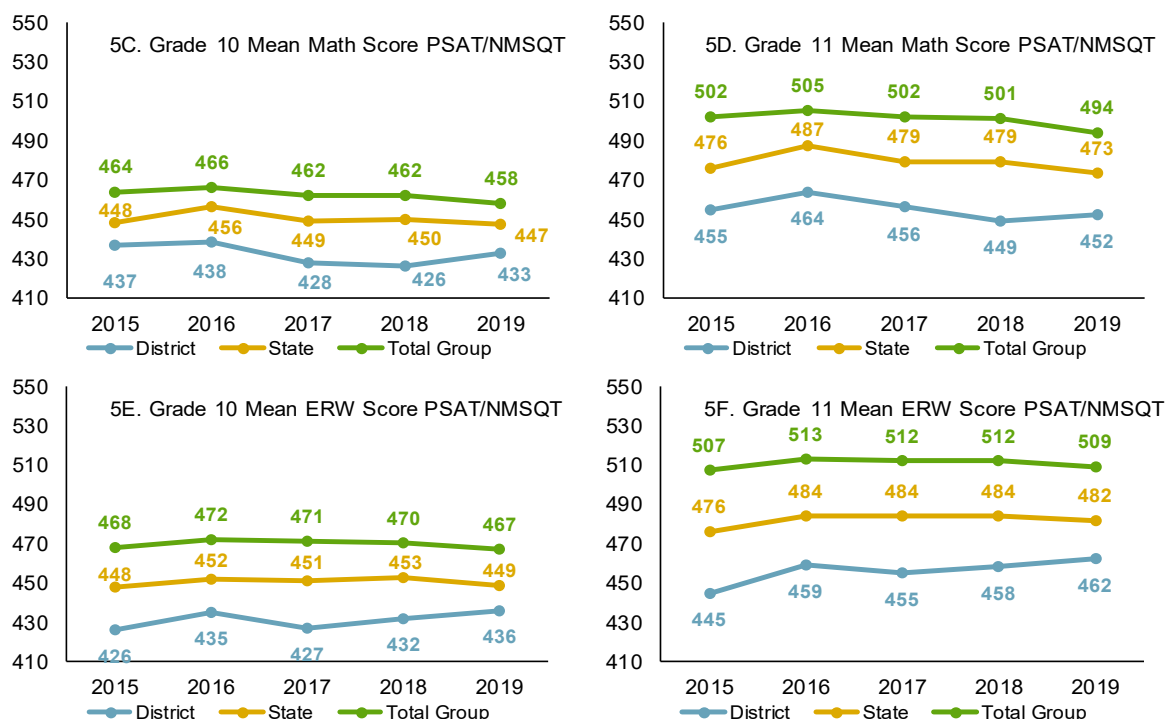
- In 2019, PSAT 8/9 mean total scores and scores by subject and grade level districtwide are lower than those of students for the state and the total group (Figures 4A–4D, p. 4 and 4E–4F).
- On the PSAT 8/9, grade 8 mean total scores increased 12 scaled-score points from 2018 to 2019, exceeding the 11 scaled-score points by the state and 3 scaled-score points by the total group, thus narrowing the gap between district and state/total group performance (Figure 4A, p. 4).
- On the PSAT 8/9, grade 8 showed increases of 10 scaled-score points on math and 3 scaled-score points on ERW from 2018 to 2019 which equaled or exceeded those from the state (10 scaled-score points and 1 scaled-score point) and the total group (3 scaled-score point and no change) (Figures 4C and 4E, p. 4).
- On the PSAT 8/9, grade 9 mean total scores increased 7 scaled-score points from 2018 to 2019, exceeding the 2 scaled-score points by the total group, thus narrowing the gap.

Figures 5A–5F show the average score by subject, grade level, and PSAT/NMSQT total score for 2015 to 2019 comparing district, state, and total group results.

Figures 5A–5B. Mean PSAT/NMSQT Scores of District, State, and Total Group Students, 2015–2019

Sources: PSAT/NMSQT 2019 Fall Scores by Institution, 10th and 11th grade; *PSAT 8/9 & PSAT/NMSQT Reports, Fall 2018 Report*

Note: ERW=Evidence-based reading and writing; Total group includes International test takers.

Figures 5C–5F. Mean PSAT/NMSQT Scores of District, State, and Total Group Students, 2015–2018

Sources: PSAT/NMSQT 2019 Fall Scores by Institution, 10th and 11th grade; *PSAT 8/9 & PSAT/NMSQT Reports, Fall 2018 Report*

Note: ERW=Evidence-based reading and writing; Total group includes International test takers.

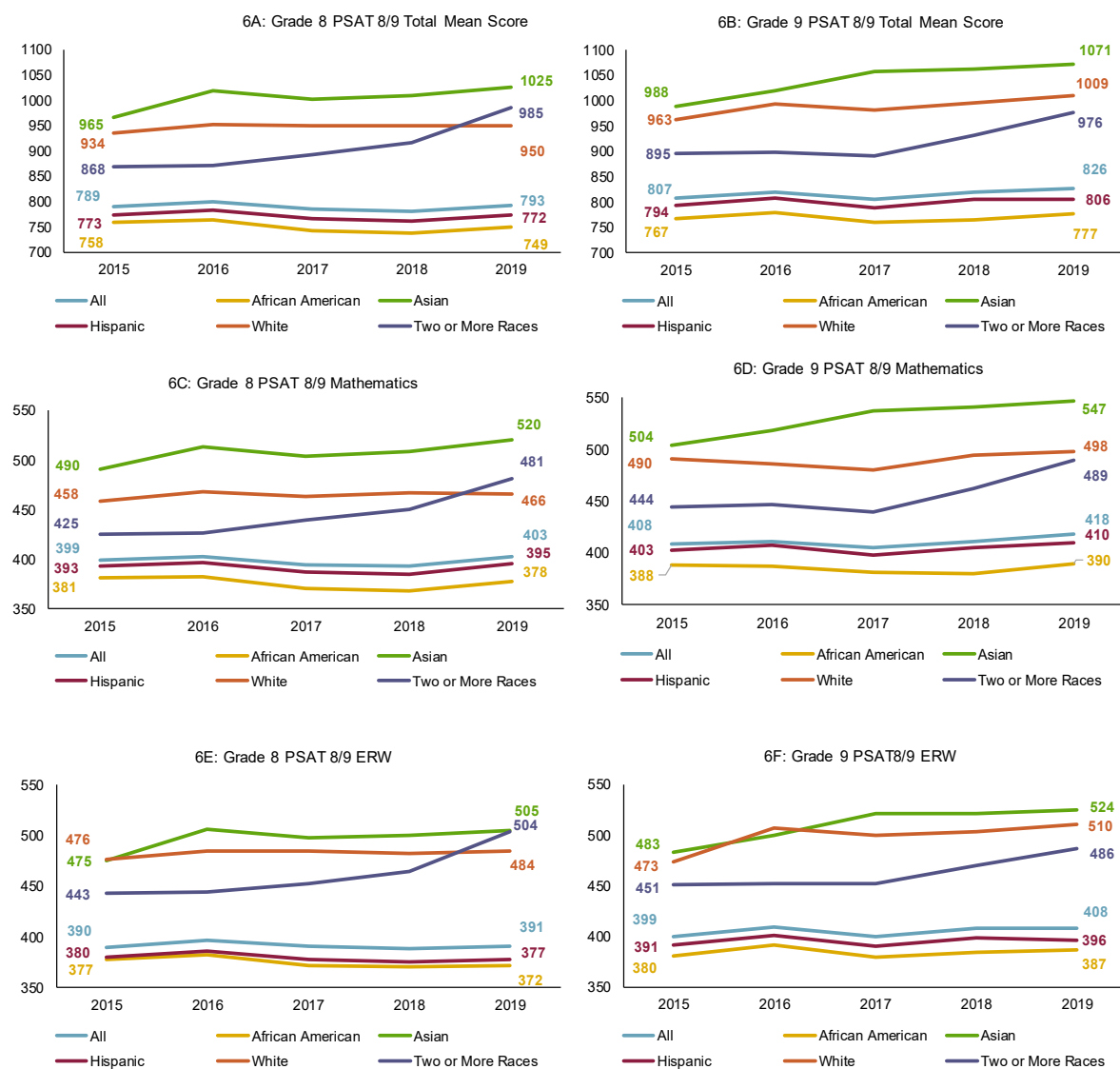
- PSAT/NMSQT mean total scores and scores by subject and grade level districtwide are lower than those of students from the state and total group (Figures 5A–5F, pp. 5–6).
- In 2019, PSAT/NMSQT mean total scores and scores by subject and grade level **increased** for the district but **decreased** for the state and total group compared to 2018, thus narrowing the gap between district and state/total group performance (Figures 5A–5F, pp. 5–6).
- Gaps in performance between the district and the total group narrowed in 2019 compared to 2015 for the mean total in grades 10 and 11, math in grade 10, and ERW in grades 10 and 11. Moreover, gaps in performance between the district and state narrowed in 2019 for the mean total score as well as the mean ERW scores in grades 10 and 11 (Figures 5A–5F, pp. 5–6).

Figures 6A–6F show the average PSAT 8/9 scores by subject, grade level, and student group for the district from 2015 to 2019.

- For eighth and ninth grade students tested on the PSAT 8/9, Asian and White students scored higher on average in both ERW and math and on the mean total score compared to African American and Hispanic students from 2015 to 2019 (Figure 6A–6F, p. 7).
- From 2015 to 2019, total mean scores and subject scores increased for all eighth grade students and for students identified as Asian, White, or Two or More Races. Moreover, math scores increased for eighth grade Hispanic students (Figures 6A, 6C, and 6E).

- For ninth grade students, total mean scores and subject scores increased for all students and all student groups from 2015 to 2019 (Figures 6B, 6D, and 6F).

Figures 6A–6F. Mean PSAT 8/9 Scores by Subject, Grade, and Race/Ethnicity, 2015–2019

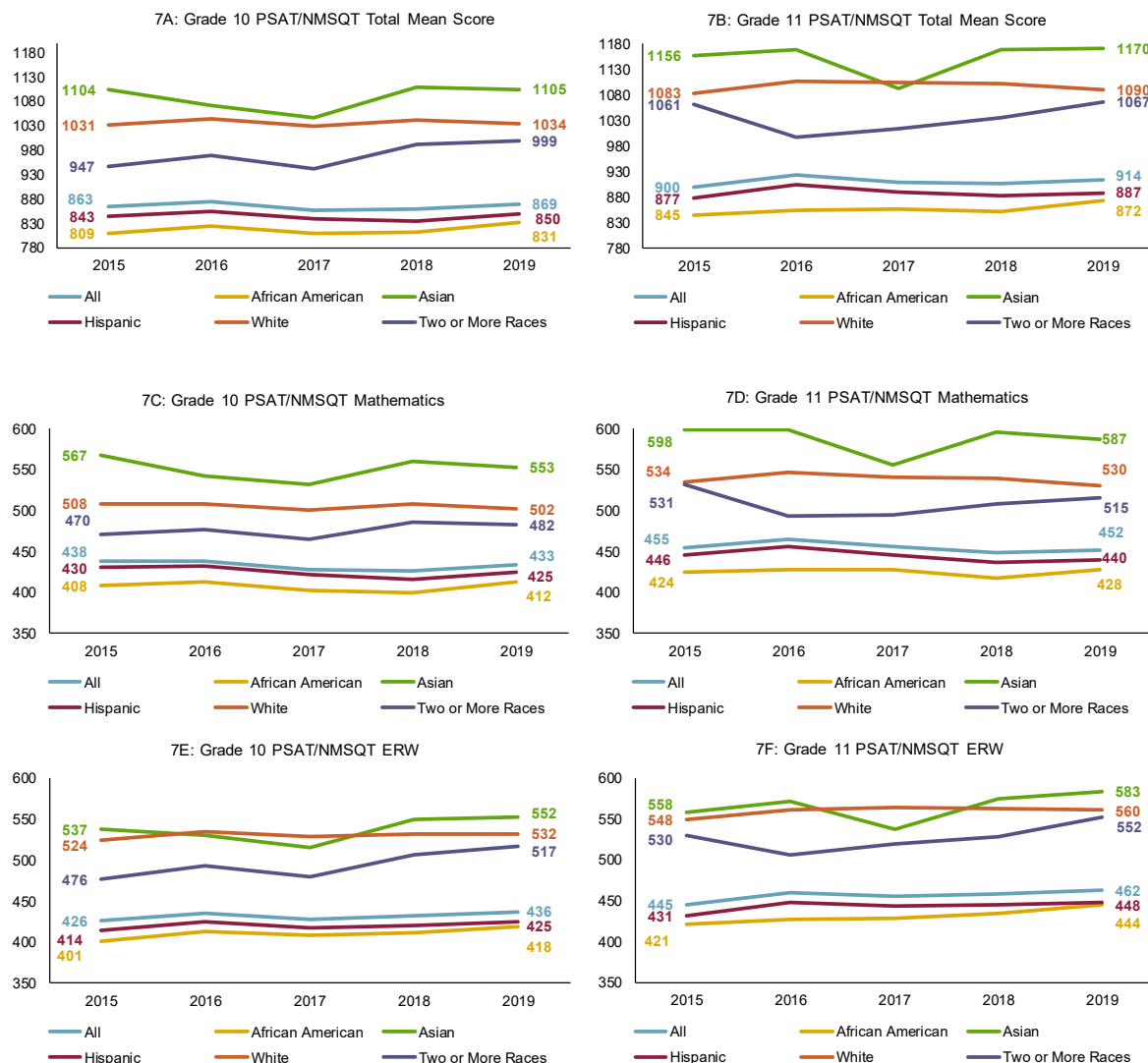


Sources: PSAT 8/9 data file, 2/17/2020; *PSAT 8/9 & PSAT/NMSQT Reports, Fall 2018 Report*

Note: ERW=Evidence-based reading and writing; Section scores may not add up to total score due to rounding. Chancery ethnicity was used because of the large percentage of *No Responses*.

Figures 7A–7F show the average PSAT/NMSQT scores by subject, grade level, and student group for the district from 2015 to 2019.

Figures 7A–7F. Mean PSAT/NMSQT Scores by Subject, Grade, and Race/Ethnicity, 2015–2019



Sources: PSAT/NMSQT 2019 Fall Scores by Demographics, 10th grade, filtered by Race/Ethnicity, 2/3/2020; PSAT/NMSQT 2018 Fall Scores by Demographics, 11th grade, filtered by Race/Ethnicity, 2/3/2020; *PSAT 8/9 & PSAT/NMSQT Reports, Fall 2018 Report*

Note: ERW=Evidence-based reading and writing

- For tenth and eleventh grade students tested on the PSAT/NMSQT, Asian and White students scored higher on average in both ERW and math and on the total mean score compared to African American and Hispanic students from 2015 to 2019 (Figure 7A–7F).
- From 2015 to 2019, total mean scores and ERW scores increased for all tenth grade students as well as all racial/ethnic groups, and math scores increased for tenth grade students identified as African American and Two or More Races (Figures 7A, 7C, and 7E).

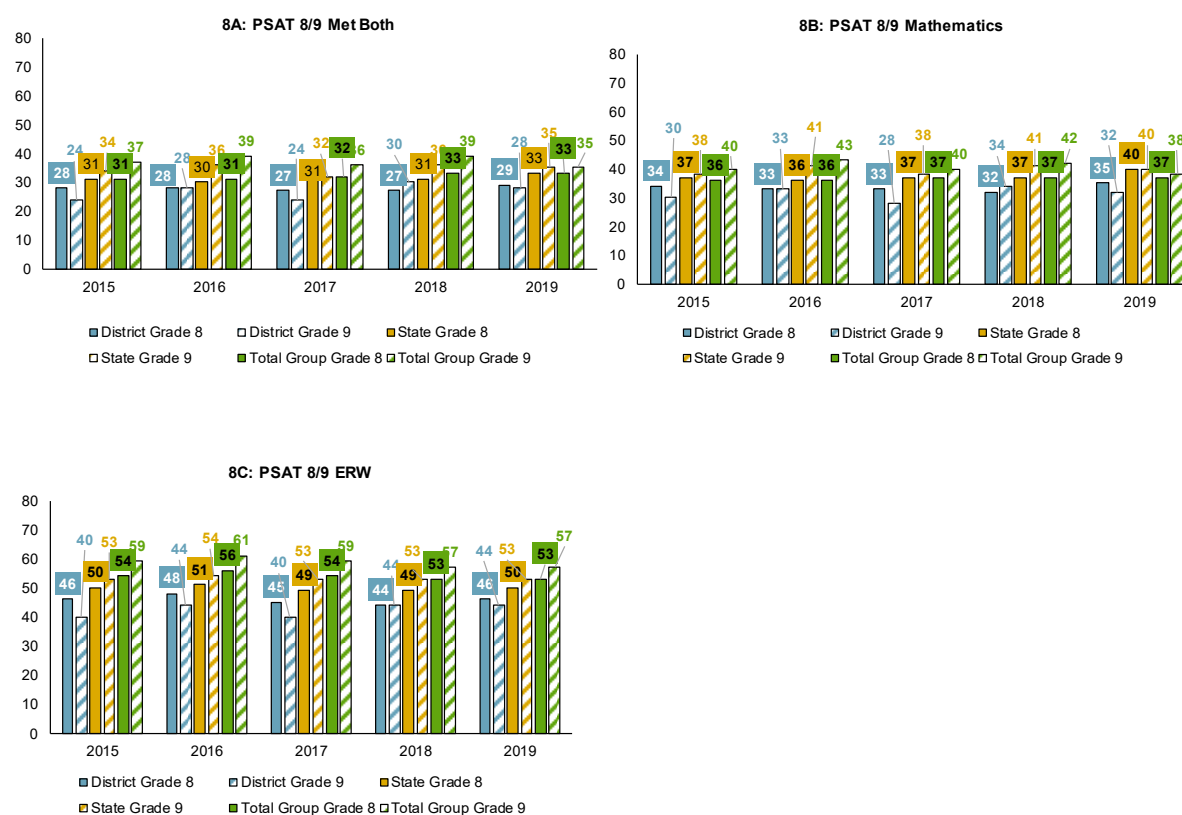
- From 2015 to 2019, total mean scores and ERW scores increased for all eleventh-grade students and all racial/ethnic groups; math scores increased for students identified as African American (Figures 7B, 7D, and 7F, p. 8).

PSAT College and Career Readiness (CCR) Benchmarks

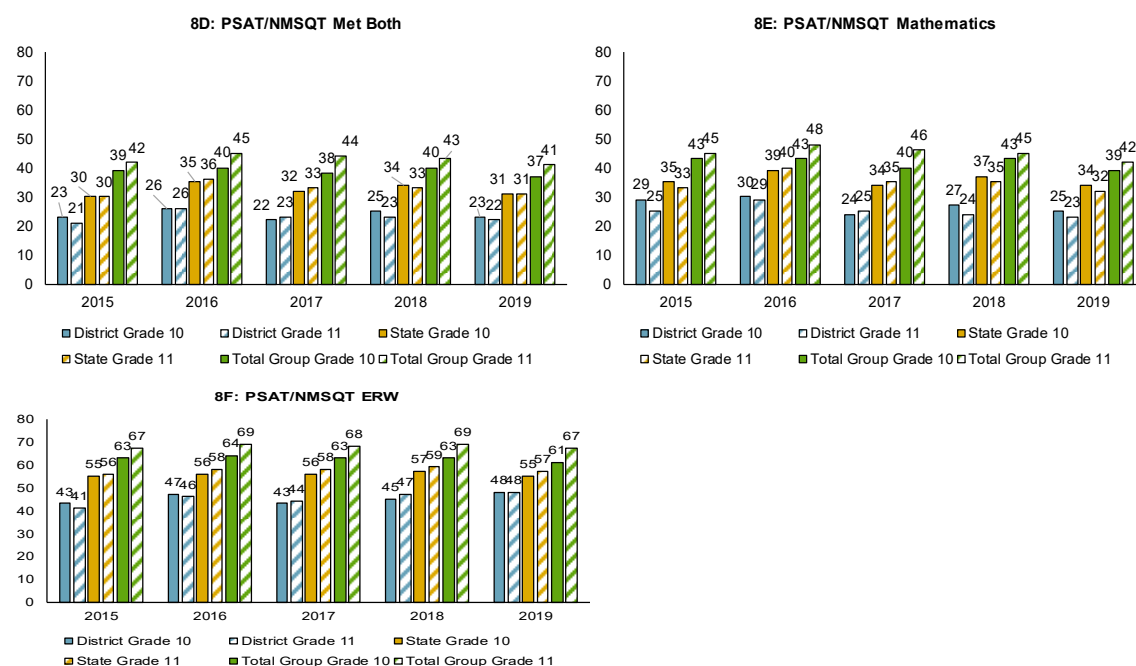
The College Board sets benchmark scores to predict students' chance of success in college and career readiness. According to the College Board, the SAT Math benchmark is associated with a 75 percent chance of earning at least a C in first-semester, college-level courses in algebra, statistics, precalculus, or calculus. The SAT ERW benchmark is associated with a 75 percent chance of earning at least a C in first-semester, college-level courses in history, literature, social science, or writing. Score reports for the PSAT/NMSQT and PSAT 8/9 include grade-level benchmarks based on how students grow from year to year toward the SAT benchmarks.

Figures 8A–8F show the percentage of students from the district, state, and total group who met college and career readiness (CCR) benchmarks in ERW, math, and both on the PSAT 8/9 and the PSAT/NMSQT.

Figures 8A–8C. Percentage of District, State, and Total Group Students Meeting CCR Benchmarks, 2015–2019



Sources: PSAT 8/9 2019 Fall Benchmarks by Institution, 8th grade, 2/5/2020; PSAT 8/9; 2019 Fall Benchmarks by Institution, 9th grade; PSAT 8/9, 2/5/2020; *PSAT 8/9 & PSAT/NMSQT Reports, Fall 2018 Report*
 Note: ERW=Evidence-based reading and writing; Total group includes international test takers.

Figures 8D–8F. Percentage of District, State, and Total Group Students Meeting CCR Benchmarks, 2015–2019

PSAT/NMSQT 2019 Fall Benchmarks by Institution, 10th grade, 2/5/2020; PSAT/NMSQT 2019 Fall Benchmarks by Institution, 11th grade, 2/5/2020; *PSAT 8/9 & PSAT/NMSQT Reports, Fall 2018 Report*

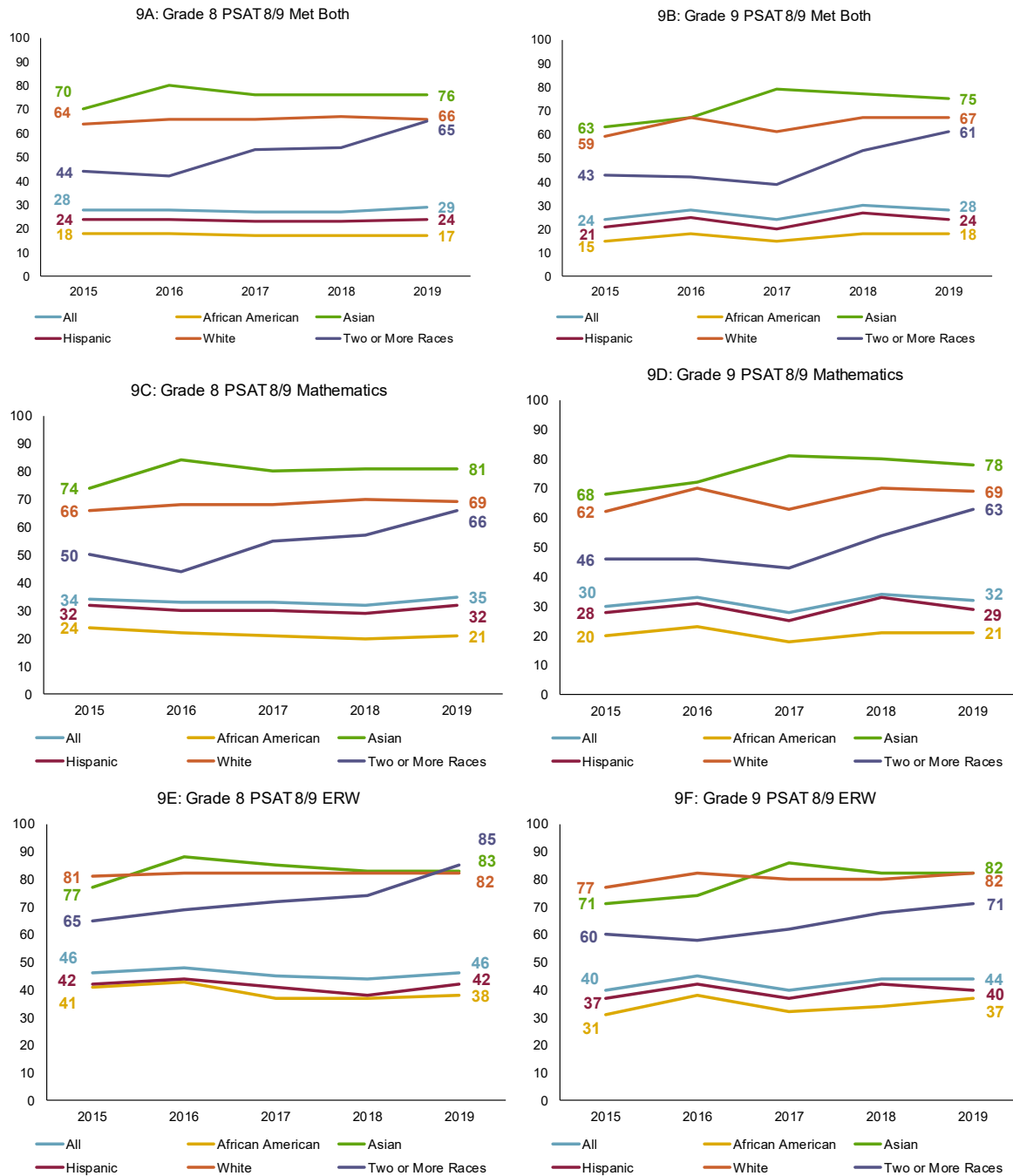
Note: ERW=Evidence-based reading and writing; Total group includes international test takers.

- A higher percentage of HISD eighth grade students taking the PSAT 8/9 met the CCR benchmark in ERW (46 percent) compared to math (35 percent) in 2019. A similar trend is evident for grades 9–11 and for both the state and total group (Figures 8B, 8C, p. 9; 8E and 8F).
- Although a lower percentage of HISD students met both CCR Benchmarks on the PSAT 8/9 and the PSAT/NMSQT by grade level compared to Texas and the total group from 2015 to 2019, district ninth grade students narrowed the gap between the district and the state and the total group; moreover, the gap narrowed between district tenth and eleventh grade students and the total group (Figures 8A, p.9 and 8D).

Figures 9A–9F show the percentage of eighth and ninth grade students who met the CCR benchmarks on the PSAT 8/9 by subject and student group from 2015 to 2019.

- HISD eighth grade students belonging to the Asian or White groups had a higher percentage of students meeting the CCR benchmarks in ERW compared to the African American and Hispanic groups and in math compared to the African American, Hispanic, and Two or more races groups. HISD ninth grade students belonging to the Asian or White groups had a higher percentage of students meeting the CCR benchmarks in ERW and math compared to the African American, Hispanic, and Two or More Races groups (Figures 9C–9D and 9E–9F, p. 11).
- The percentage of eighth grade students meeting all CCR benchmarks in 2019 increased or remained the same compared to 2015 for students belonging to the Asian, White, or Two or More Races groups. For ninth grade, the percentage meeting all CCR benchmarks increased for all racial/ethnic groups (Figures 9A–9F, p. 11).

Figures 9A–9F. Percentage of 8th and 9th Grade Students Meeting CCR Benchmarks on PSAT 8/9 by Student Group, 2015–2019

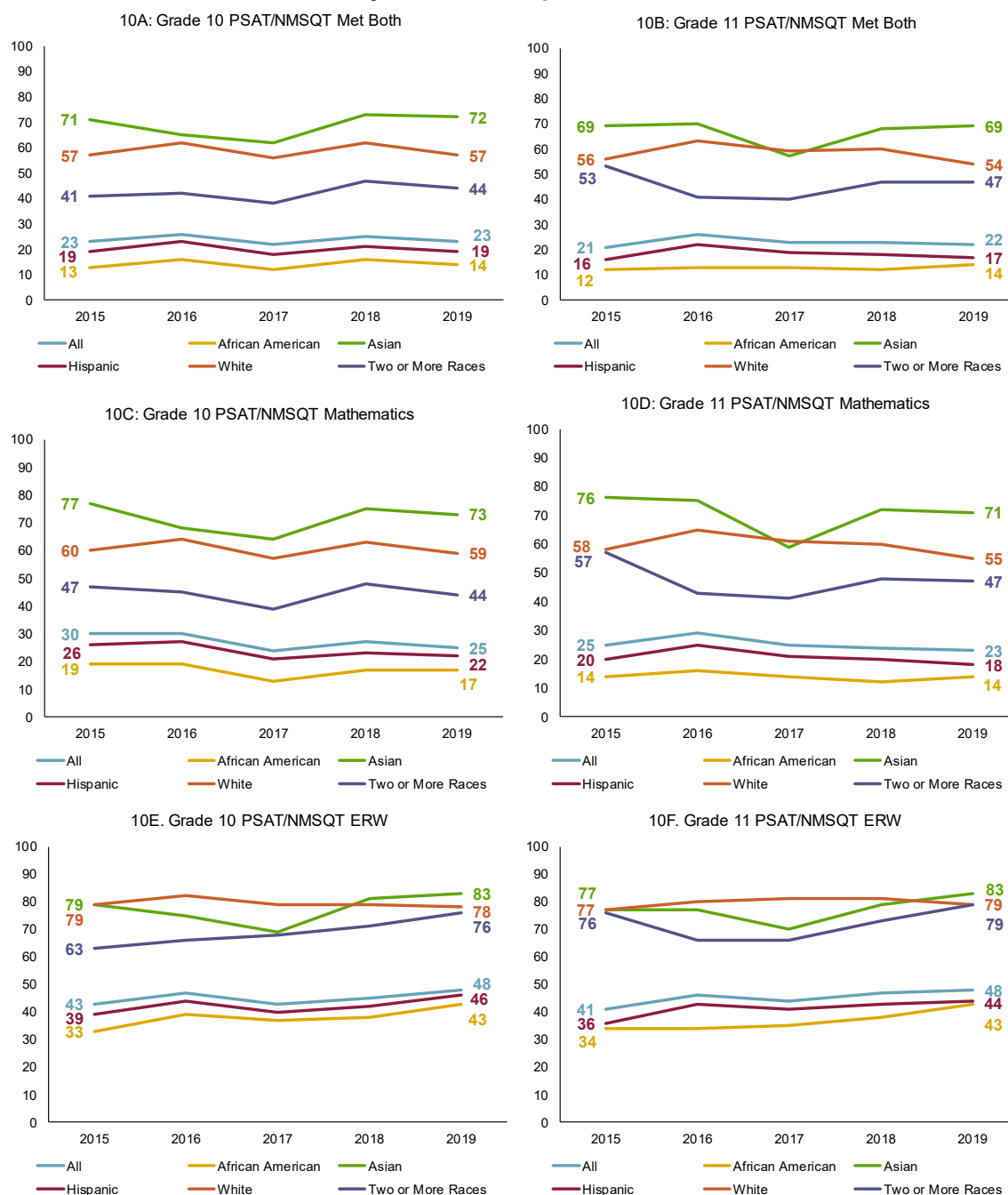


Sources: PSAT 8/9 data file, 2/17/2020; PSAT 8/9 & PSAT/NMSQT Reports, Fall 2018 Report

Note: ERW=Evidence-based reading and writing; Section scores may not add up to total score due to rounding. Chancery ethnicity was used because of the large percentage of No Responses.

Figures 10A–10F show the percentage of tenth and eleventh grade students who met the CCR benchmarks on the PSAT/NMSQT by subject and student group from 2015 to 2019.

Figure 10A–10F. Percentage of 10th and 11th Grade Students Meeting CCR Benchmarks on PSAT/NMSQT by Student Group, 2015–2019



Sources: PSAT/NMSQT 2019 Fall Benchmarks by Demographics, 10th grade, 2/3/2020; PSAT/NMSQT 2019 Fall Benchmarks by Demographics, 11th grade, 1/27/2020; PSAT 8/9 & PSAT/NMSQT Reports, Fall 2018 Report

Note: ERW=Evidence-based reading and writing

- HISD tenth and eleventh grade students belonging to the Asian or White groups had a higher percentage of students meeting the CCR benchmarks in both ERW and math compared to the African American and Hispanic groups (Figures 10C–10F, p. 12).
- HISD tenth grade students belonging to all students or the Asian, African American, Hispanic, or Two or More Races groups had a higher percentage of students meeting the ERW benchmarks in 2019 compared to 2015 (Figure 10E, p. 12).
- The percentage of eleventh grade students belonging to all students or the African American, Asian, Hispanic, or White groups meeting ERW benchmarks in 2019 increased compared to 2015, and the percentage of eleventh grade students belonging all students, Hispanic, or African American groups meeting both CCR benchmarks in 2019 increased compared to 2015 (Figures 10B, 10D, and 10F, p. 12).

PSAT Participation and Performance by Campus

Table 1A (p. 14) shows the number of eighth grade students tested, average PSAT 8/9 total score, and percentage of students meeting both the ERW and math CCR benchmarks by campus.

- Garden Oaks had the greatest increase in the number of eighth grade students taking the PSAT, with an increase of 49 students. Campuses were required to test each year to be included in this analysis.
- T.H. Rogers School had the highest average total score at 1086 and Briarmeadow had the highest percentage of eighth grade students who met both the ERW and math CCR benchmarks at 91.8 percent.
- Gregory-Lincoln PK–8 had the greatest increase in total score at 71 scaled-score points and BCM Biotech Academy at Rusk had the greatest increase in the percentage of students meeting both CCR benchmarks at 15.5 percentage points among the schools with at least 10 students tested in 2018 and 2019.

Campus	Number Tested			Mean Test Score			% Met Both CCR Benchmarks		
	2018	2019	Change	2018	2019	Change	2018	2019	Change
Rogers TH MS	147	156	9	1090	1086	-4	95.9	89.1	-6.8
Mandarin Immersion Magnet	15	45	30	1019	1042	23	93.3	88.9	-4.4
Briar meadow	42	49	7	955	1011	56	83.3	91.8	8.5
Pin Oak MS	395	383	-12	966	979	13	69.9	70.2	0.3
Lanier MS	461	491	30	994	967	-27	77.4	62.9	-14.5
Wharton K-8	22	22	0	928	950	22	68.2	77.3	9.1
Baylor College MS	227	187	-40	875	903	28	46.7	57.8	11.1
Garden Oaks	0	49	49	--	893	--	--	49.0	--
Chrysalis MS	86	86	0	892	886	-6	59.3	55.8	-3.5
YWCPA	80	91	11	872	866	-6	35.0	34.1	-0.9
Sharpstown Intl	151	181	30	845	859	14	43.0	50.3	7.3
Wilson Montessori	35	24	-11	893	858	-35	37.1	29.2	-7.9
West Briar MS	356	324	-32	839	854	15	37.1	35.5	-1.6
Hogg MS	297	298	1	833	851	18	37.0	40.3	3.3
E-STEM West MS	59	69	10	870	845	-25	50.8	42.0	-8.8
Rice School PK-8	151	138	-13	824	841	17	39.7	37.7	-2.0
Black MS	345	374	29	831	838	7	38.3	38.2	-0.1
Pershing MS	558	511	-47	859	832	-27	40.7	34.2	-6.5
BCM Biotech Acad at Rusk	128	113	-15	787	824	37	23.4	38.9	15.5
Burbank MS	440	418	-22	793	824	31	30.2	41.1	10.9
Hamilton MS	406	429	23	815	822	7	36.9	34.7	-2.2
Tanglewood MS	254	251	-3	814	821	7	33.9	35.9	2.0
Stevenson MS	444	459	15	813	815	2	39.0	36.8	-2.2
Meyerland MS	496	479	-17	807	813	6	30.8	29.0	-1.8
Leland YMCPA	93	85	-8	809	805	-4	30.1	24.7	-5.4
Young Scholars	7	13	6	*	787	--	*	15.4	--
Energized MS	127	143	16	739	781	42	13.4	28.0	14.6
Hartman MS	398	335	-63	742	765	23	17.8	19.7	1.9
Gregory-Lincoln PK-8	78	80	2	684	755	71	5.1	15.0	9.9
Pilgrim Acad	91	104	13	766	754	-12	27.5	18.3	-9.2
Edison MS	206	195	-11	687	748	61	6.3	19.5	13.2
Marshall MS	262	233	-29	729	744	15	14.5	12.9	-1.6
Navarro MS	224	163	-61	706	744	38	12.5	13.5	1.0
Lawson MS	324	357	33	688	741	53	8.0	15.1	7.1
Reagan Ed Ctr PK-8	118	102	-16	737	737	0	16.1	17.6	1.5
Clifton MS	215	205	-10	738	737	-1	16.3	14.6	-1.7
Ortiz MS	305	335	30	710	731	21	12.5	14.6	2.1
Fonville MS	291	207	-84	687	726	39	4.5	17.4	12.9
McReynolds MS	162	163	1	717	725	8	11.1	9.2	-1.9
Henry MS	268	192	-76	698	725	27	7.1	10.4	3.3
Fondren MS	286	283	-3	725	719	-6	11.2	9.5	-1.7
Williams MS	163	149	-14	669	710	41	1.8	8.7	6.9
Long Acad	228	249	21	695	703	8	10.1	11.2	1.1
Thomas MS	152	167	15	675	701	26	3.9	7.2	3.3
Holland MS	192	226	34	702	701	-1	12.0	8.4	-3.6
Deady MS	203	218	15	711	694	-17	12.3	10.6	-1.7
Welch MS	228	192	-36	664	691	27	5.3	13.5	8.2
Attucks MS	155	117	-38	668	687	19	7.1	11.1	4.0
Forest Brook MS	--	229	--	--	679	--	--	4.8	--
Key MS	184	174	-10	691	676	-15	8.7	5.7	-3.0
Sugar Grove MS	222	237	15	654	675	21	2.3	4.6	2.3
Inspired Acad	76	66	-10	671	665	-6	2.6	1.5	-1.1
Fleming MS	147	134	-13	722	664	-58	15.0	2.2	-12.8
Cullen MS	112	97	-15	685	663	-22	6.3	2.1	-4.2
E-STEM Central MS	99	108	9	688	627	-61	8.1	0.0	-8.1

Sources: PSAT 8/9 2019 Fall Scores and Fall Benchmarks by Institution, 8th grade, 2/3/2020; PSAT 8/9 & PSAT/NMSQT Reports, Fall 2018 Report

"--" indicates no students tested, no students met the benchmark

* The College Board masks data for fewer than 10 test-takers.

Table 1B (p. 16) shows the number of ninth grade students tested, average PSAT 8/9 total score, and percentage of students meeting both the ERW and math CCR benchmarks by campus.

- Wisdom and Scarborough high schools had the greatest increases in the number of ninth grade students taking the PSAT 8/9, with increases of 155 and 65 students, respectively.
- Carnegie High School had the highest average total score at 1135 as well as the highest percentage of students who met both the ERW and math CCR benchmarks at 94.8 percent.
- Middle College-Fraga had the greatest increase in the percentage of students meeting both CCR benchmarks with 19.5 percentage points, while Middle College-Gulfton had the greatest increase in the mean test score at 118 scaled-score points.

Table 1C (p. 17) shows the number of tenth grade students tested, average PSAT/NMSQT total score, and percentage of students meeting both the ERW and math CCR benchmarks by campus.

- Carnegie High School had the greatest increase in the number of tenth grade students taking the PSAT/NMSQT, with an increase of 87 students.
- Carnegie High School had the highest average total score at 1199, and the highest percentage of students who met both the ERW and math CCR benchmarks at 94.3 percent.
- South Early College High School had the greatest increase in the percentage of students meeting both ERW and math CCR benchmarks with an increase of 9.5 percentage points.

Table 1D (p. 18) shows the number of eleventh grade students tested, average PSAT/NMSQT total score, and percentage of students meeting both the ERW and math CCR benchmarks by campus.

- Milby High School had the greatest increase in the number of eleventh grade students taking the PSAT/NMSQT, with an increase of 115 students.
- Carnegie High School had the highest average total score at 1283 followed by DeBakey High School at 1253.
- DeBakey and Carnegie high schools had the highest percentage of students meeting both college and career readiness benchmarks at 97.9 percent and 95.2 percent, respectively.
- YWCPA had the greatest increase in the average total score and the greatest increase in the percentage of students meeting both ERW and math CCR benchmarks with increases of 50 points and 14.7 percentage points, respectively. However, it should be noted that it had 28 percent fewer students tested in 2019 than in 2018.

Table 1B. PSAT 8/9 Grade 9 Mean Total Scores and Percent Met CCR Benchmarks by Campus, 2018 and 2019
(Sorted by 2019 Mean Total Score)

Campus	Number Tested			Mean Test Score			% Met Both CCR Benchmarks			
	2018	2019	Change	2018	2019	Change	2018	2019	Change	
Carnegie HS	331	268	-63	1142	1135	-7	97.3	94.8	-2.5	
DeBakey HS	293	287	-6	1066	1076	10	84.3	87.1	2.8	
Kinder HSPVA	191	215	24	1074	1071	-3	84.3	77.7	-6.6	
Challenge ECHS	125	129	4	985	969	-16	71.2	71.3	0.1	
Eastwood Acad	103	125	22	957	961	4	68.0	59.2	-8.8	
East ECHS	117	110	-7	950	953	3	70.9	62.7	-8.2	
Bellaire HS	764	820	56	943	952	9	54.2	53.5	-0.7	
N. Houston ECHS	138	127	-11	929	942	13	63.0	56.7	-6.3	
Energy Inst HS	215	208	-7	878	929	51	40.5	47.6	7.1	
Hou Acad. Intl.	137	149	12	963	928	-35	61.3	43.0	-18.3	
Lamar HS	759	621	-138	901	924	23	46.5	51.0	4.5	
YWCPA	79	60	-19	916	918	2	50.6	38.3	-12.3	
South ECHS	106	113	7	876	912	36	36.8	47.8	11.0	
Sharpstown Intl	190	186	-4	923	906	-17	51.6	45.2	-6.4	
Mid Coll - Fraga	29	48	19	793	889	96	13.8	33.3	19.5	
HS for Law & Justice	145	135	-10	901	887	-14	42.1	41.5	-0.6	
Long Acad	48	64	16	853	884	31	27.1	43.8	16.7	
Heights HS	656	583	-73	864	877	13	38.0	38.3	0.3	
Westside HS	793	780	-13	866	870	4	40.2	35.6	-4.6	
Leland YMCPA	58	62	4	842	862	20	31.0	41.9	10.9	
Jones HS	72	81	9	774	833	59	9.7	25.9	16.2	
Waltrip HS	511	450	-61	803	811	8	23.9	20.2	-3.7	
E-STEM Central HS	73	56	-17	777	809	32	21.9	30.4	8.5	
E-STEM West HS	97	110	13	778	801	23	19.6	20.9	1.3	
Chavez HS	710	703	-7	800	799	-1	26.3	23.8	-2.5	
Mount Carmel Acad.	80	67	-13	834	792	-42	25.0	11.9	-13.1	
Milby HS	578	511	-67	766	790	24	17.0	19.0	2.0	
Northside HS	366	354	-12	788	788	0	18.3	16.9	-1.4	
Mid Coll - Gulfon	33	31	-2	668	786	118	6.1	3.2	-2.9	
Westbury HS	569	537	-32	747	766	19	13.7	12.8	-0.9	
Houston MSTC HS	665	677	12	731	754	23	10.1	9.5	-0.6	
Furr HS	225	280	55	721	753	32	10.2	12.5	2.3	
Austin HS	430	453	23	726	742	16	9.1	7.3	-1.8	
Scarborough HS	136	201	65	750	740	-10	15.4	8.0	-7.4	
Madison HS	461	462	1	692	737	45	5.4	9.5	4.1	
Kashmere HS	197	217	20	731	729	-2	9.1	7.8	-1.3	
North Forest HS	279	232	-47	710	724	14	7.2	8.6	1.4	
Washington HS	198	224	26	703	723	20	8.1	5.8	-2.3	
Sterling HS	448	445	-3	706	719	13	6.3	7.4	1.1	
Wheatley HS	181	137	-44	685	718	33	5.5	5.8	0.3	
Sharpstown HS	432	447	15	710	699	-11	8.8	4.3	-4.5	
Worthing HS	193	197	4	692	691	-1	4.1	4.1	0.0	
Wisdom HS	390	545	155	704	682	-22	7.4	5.5	-1.9	
Yates HS	231	229	-2	673	671	-2	3.0	3.1	0.1	
Tx Conn. Acad.	1	0	--	*	--	--	*	--	--	--

Sources: PSAT 8/9 2019 Fall Scores and Fall Benchmarks by Institution, 9th grade, 1/27/2020; PSAT 8/9 & PSAT/NMSQT Reports, Fall 2018 Report

"--" indicates no students tested, no students met the benchmark

* The College Board masks data for fewer than 10 test-takers.

Table 1C. PSAT/NMSQT Grade 10 Mean Total Scores and Percent Met CCR Benchmarks by Campus, 2018 and 2019
(Sorted by 2019 Mean Total Score)

Campus	Number Tested				Mean Test Score				% Met Both CCR Benchmarks			
	2018	2019	Change		2018	2019	Change		2018	2019	Change	
Carnegie HS	193	280	<div></div>	87	1212	1199	<div></div>	-13	94.8	94.3	<div></div>	-0.5
DeBaKey HS	219	220	<div></div>	1	1185	1135	<div></div>	-50	95.4	90.0	<div></div>	-5.4
Kinder HSPVA	188	195	<div></div>	7	1147	1091	<div></div>	-56	79.3	71.3	<div></div>	-8.0
TCAH	25	28	<div></div>	3	1092	1017	<div></div>	-75	68.0	57.1	<div></div>	-10.9
Challenge EC HS	135	123	<div></div>	-12	1013	996	<div></div>	-17	55.6	51.2	<div></div>	-4.4
Eastwood Acad HS	118	101	<div></div>	-17	1000	994	<div></div>	-6	53.4	53.5	<div></div>	0.1
Bellaire HS	696	716	<div></div>	20	1020	992	<div></div>	-28	53.9	45.1	<div></div>	-8.8
HAIS HS	133	115	<div></div>	-18	982	990	<div></div>	8	42.1	49.6	<div></div>	7.5
YWCPA	38	69	<div></div>	31	990	967	<div></div>	-23	42.1	40.6	<div></div>	-1.5
East EC HS	110	114	<div></div>	4	982	964	<div></div>	-18	59.1	43.9	<div></div>	-15.2
North Houston EC HS	118	135	<div></div>	17	999	945	<div></div>	-54	59.3	41.5	<div></div>	-17.8
Lamar HS	664	641	<div></div>	-23	945	927	<div></div>	-18	41.3	31.2	<div></div>	-10.1
Energy Inst HS	182	175	<div></div>	-7	930	925	<div></div>	-5	40.1	31.4	<div></div>	-8.7
Westside HS	661	660	<div></div>	-1	915	914	<div></div>	-1	34.3	30.9	<div></div>	-3.4
HSLJ	108	120	<div></div>	12	925	909	<div></div>	-16	35.2	15.8	<div></div>	-19.4
South EC HS	121	99	<div></div>	-22	874	904	<div></div>	30	19.8	29.3	<div></div>	9.5
Heights HS	569	580	<div></div>	11	888	903	<div></div>	15	28.5	25.2	<div></div>	-3.3
Leland YMCPA	57	47	<div></div>	-10	952	877	<div></div>	-75	38.6	12.8	<div></div>	-25.8
Long Acad	61	47	<div></div>	-14	910	865	<div></div>	-45	29.5	14.9	<div></div>	-14.6
Mount Carmel Acad HS	88	84	<div></div>	-4	880	861	<div></div>	-19	27.3	20.2	<div></div>	-7.1
Chavez HS	639	501	<div></div>	-138	840	855	<div></div>	15	21.9	19.6	<div></div>	-2.3
Waltrip HS	496	436	<div></div>	-60	822	848	<div></div>	26	16.7	17.2	<div></div>	0.5
E-STEM West HS	86	76	<div></div>	-10	862	838	<div></div>	-24	24.4	13.2	<div></div>	-11.2
Northside HS	333	298	<div></div>	-35	805	837	<div></div>	32	15.0	14.4	<div></div>	-0.6
Jones HS	94	74	<div></div>	-20	830	830	<div></div>	0	16.0	14.9	<div></div>	-1.1
Milby HS	503	486	<div></div>	-17	813	815	<div></div>	2	15.1	13.0	<div></div>	-2.1
Middle College HS - Fraga	33	23	<div></div>	-10	805	813	<div></div>	8	6.1	8.7	<div></div>	2.6
Westbury HS	555	478	<div></div>	-77	780	801	<div></div>	21	9.9	9.4	<div></div>	-0.5
E-STEM Central HS	53	60	<div></div>	7	718	800	<div></div>	82	9.4	10.0	<div></div>	0.6
Austin HS	351	316	<div></div>	-35	776	788	<div></div>	12	7.7	6.0	<div></div>	-1.7
Kashmere HS	185	144	<div></div>	-41	748	784	<div></div>	36	3.2	4.9	<div></div>	1.7
Worthing HS	160	170	<div></div>	10	704	779	<div></div>	75	4.4	0.6	<div></div>	-3.8
Furr HS	226	212	<div></div>	-14	764	778	<div></div>	14	4.9	5.7	<div></div>	0.8
Washington HS	145	150	<div></div>	5	747	778	<div></div>	31	7.6	6.0	<div></div>	-1.6
Houston MSTC HS	577	509	<div></div>	-68	758	778	<div></div>	20	6.2	5.1	<div></div>	-1.1
North Forest HS	217	189	<div></div>	-28	753	776	<div></div>	23	3.7	5.3	<div></div>	1.6
Sterling HS	350	332	<div></div>	-18	752	775	<div></div>	23	5.4	5.7	<div></div>	0.3
Scarborough HS	146	154	<div></div>	8	792	773	<div></div>	-19	10.3	7.1	<div></div>	-3.2
Wheatley HS	172	135	<div></div>	-37	717	767	<div></div>	50	1.7	3.0	<div></div>	1.3
Madison HS	334	330	<div></div>	-4	705	766	<div></div>	61	2.1	4.2	<div></div>	2.1
Middle College HS - Gulfton	39	48	<div></div>	9	789	760	<div></div>	-29	12.8	6.3	<div></div>	-6.5
Sharpstown HS	398	398	<div></div>	0	732	756	<div></div>	24	3.8	4.5	<div></div>	0.7
Yates HS	147	162	<div></div>	15	734	749	<div></div>	15	4.1	1.9	<div></div>	-2.2
Wisdom HS	431	426	<div></div>	-5	735	742	<div></div>	7	3.9	2.3	<div></div>	-1.6
Sharpstown Intl	148	0		--	925	--		--	37.8	--		--

Sources: PSAT/NMSQT 2019 Fall Scores and Fall Benchmarks by Institution, 10th grade, 1/27/2020; PSAT 8/9 & PSAT/NMSQT Reports, Fall 2018 Report

"--" indicates no students tested, no students met the benchmark

Table 1D. PSAT/NMSQT Grade 11 Mean Total Scores and Percent Met CCR Benchmarks by Campus, 2018 and 2019
(Sorted by 2019 Mean Total Score)

Campus	Number Tested			Change	Mean Test Score			Change	% Met Both CCR Benchmarks			Change
	2018	2019			2018	2019			2018	2019		
Carnegie HS	133	167		34	1321	1283		-38	95.5	95.2		-0.3
DeBakey HS	175	190		15	1280	1253		-27	98.9	97.9		-1.0
Kinder HSPVA	190	186		-4	1184	1186		2	76.3	68.3		-8.0
Bellaire HS	630	671		41	1084	1077		-7	51.9	49.8		-2.1
TCAH	61	56		-5	1115	1072		-43	57.4	51.8		-5.6
Challenge EC HS	103	122		19	1054	1054		0	36.9	45.9		9.0
YWCPA	46	33		-13	990	1040		50	21.7	36.4		14.7
Eastwood Acad HS	103	115		12	1049	1038		-11	51.5	49.6		-1.9
North Houston EC HS	115	108		-7	1009	1032		23	42.6	47.2		4.6
HAIS HS	104	121		17	1035	1021		-14	39.4	38.8		-0.6
East EC HS	126	103		-23	1034	1006		-28	40.5	31.1		-9.4
Lamar HS	633	573		-60	1000	999		-1	37.3	35.3		-2.0
Leland YMCPA	43	46		3	1051	998		-53	48.8	23.9		-24.9
Energy Inst HS	161	173		12	1006	996		-10	36.6	32.4		-4.2
Long Acad	42	57		15	941	983		42	28.6	26.3		-2.3
Westside HS	586	572		-14	987	973		-14	37.0	30.9		-6.1
HSLJ	123	87		-36	915	948		33	8.1	19.5		11.4
South EC HS	105	102		-3	921	939		18	21.0	22.5		1.5
Heights HS	483	491		8	932	938		6	19.9	19.8		-0.1
Mount Carmel Acad HS	83	87		4	930	931		1	18.1	17.2		-0.9
Chavez HS	612	491		-121	888	899		11	18.1	18.9		0.8
E-STEM Central HS	117	68		-49	851	887		36	10.3	10.3		0.0
Waltrip HS	366	390		24	863	877		14	13.1	12.1		-1.0
Jones HS	94	81		-13	860	850		-10	9.6	2.5		-7.1
Westbury HS	453	473		20	817	848		31	7.5	5.7		-1.8
Middle College HS - Fraga	14	28		14	820	847		27	0.0	10.7		10.7
Milby HS	330	445		115	869	847		-22	15.2	9.4		-5.8
Northside HS	317	314		-3	843	842		-1	9.1	10.8		1.7
Scarborough HS	119	148		29	836	829		-7	9.2	4.7		-4.5
Washington HS	129	116		-13	812	822		10	7.0	10.3		3.3
Austin HS	341	297		-44	804	817		13	7.3	4.0		-3.3
Furr HS	187	173		-14	805	816		11	5.3	4.6		-0.7
Sharpstown HS	327	265		-62	770	808		38	4.0	4.5		0.5
Houston MSTC HS	560	458		-102	799	804		5	5.5	4.8		-0.7
North Forest HS	202	156		-46	757	800		43	2.5	5.1		2.6
Madison HS	303	289		-14	780	798		18	3.6	3.1		-0.5
Sterling HS	240	273		33	798	797		-1	7.5	3.3		-4.2
Middle College HS - Gulfon	37	39		2	770	789		19	5.4	0.0		-5.4
Yates HS	144	133		-11	767	786		19	5.6	0.8		-4.8
Kashmere HS	143	162		19	758	782		24	1.4	1.9		0.5
Worthing HS	147	150		3	771	778		7	2.7	2.7		0.0
Wheatley HS	146	129		-17	751	771		20	2.1	2.3		0.2
Wisdom HS	423	362		-61	782	766		-16	5.2	3.0		-2.2
E-STEM West HS	--	37		--	--	750		--	--	5.4		--
Edison MS												
Holland MS												
Sharpstown Intl	134	--		--	1023	--		--	47.8	--		--

Sources: PSAT/NMSQT 2019 Fall Scores and Fall Benchmarks by Institution, 11th grade, 1/27/2020; PSAT 8/9 & PSAT/NMSQT Reports, Fall 2018 Report

"--" indicates no students tested, no students met the benchmark

Table 2A (p. 20) shows the average PSAT 8/9 mathematics and ERW scores and the percentage of eighth grade students meeting the math and ERW CCR benchmarks by campus.

- Eighth grade students at T.H. Rogers School had the highest average score in both mathematics and ERW at 528 and 558, respectively.
- Briar Meadow had the highest percentage of eighth grade students meeting CCR benchmarks for mathematics at 98.0 percent, and T.H. Rogers had the highest percentage of eighth grade students meeting the CCR benchmark for ERW at 98.7 percent, respectively.
- Energized Middle School had the greatest increase in the percentage of students meeting the mathematics CCR benchmark with an increase of 20.2 percentage points.
- Edison Middle School had the greatest increase in the percentage of eighth grade students meeting the ERW CCR benchmark at 17.0 percentage points.

Table 2B (p. 21) shows the average PSAT 8/9 mathematics and ERW scores and the percentage of ninth grade students meeting the math and ERW CCR benchmarks by campus.

- Carnegie High School had the highest average score in both mathematics and ERW at 567 and 568, respectively.
- Ninth grade students at Middle College High School-Fraga and Middle College High School-Gulfton had the greatest increase in the mean mathematics score at 50 points, followed by Jones High School at 45 points.
- Ninth grade students at Middle College High School-Gulfton had the greatest increase in the mean ERW score at 68 points, followed by Middle College High School-Fraga at 46 points.
- Carnegie High School had the highest percentage of ninth grade students meeting CCR benchmarks for mathematics and ERW at 95.9 percent and 97.4 percent, respectively.
- Ninth grade students at Long Academy had the greatest increase in the percentage of students meeting the math CCR benchmark at 24.5 percentage points followed by Jones High School at 19.3 percentage points.
- Middle College High School-Fraga had the greatest increase in the percentage of students meeting the ERW CCR benchmark at 29.4 percentage points, followed by Middle College High School-Gulfton at 26.6 percentage points.

Table 2A. PSAT 8/9 Grade 8 Mean Scores and Percent Met CCR Benchmarks by Subject and Campus, 2018 and 2019

Campus	Mathematics									Evidence-Based Reading and Writing								
	Mean Score			Percent Met CCR			Mean Score			Percent Met CCR			Mean Score			Percent Met CCR		
	2018	2019	Change	2018	2019	Change	2018	2019	Change	2018	2019	Change	2018	2019	Change	2018	2019	Change
Attucks MS	338	362		24	9.7	15.4		5.7	330	325		-5	18.7	19.7		1.0		
Baylor College MS	437	454		17	53.7	64.7		11.0	438	450		12	65.6	77.5		11.9		
BCM Biotech Acad at Rusk	392	417		25	28.9	45.1		16.2	395	407		12	50.0	61.9		11.9		
Black MS	417	424		7	43.2	43.6		0.4	414	414		0	54.8	53.2		-1.6		
Briarwood	480	519		39	88.1	98.0		9.9	475	492		17	90.5	91.8		1.3		
Burbank MS	410	431		21	41.1	54.8		13.7	383	393		10	42.7	51.2		8.5		
Chrysalis MS	462	450		-12	72.1	69.8		-2.3	431	436		5	72.1	74.4		2.3		
Clifton MS	371	381		10	23.7	19.0		-4.7	367	356		-11	33.0	31.2		-1.8		
Cullen MS	346	335		-11	8.9	4.1		-4.8	339	328		-11	15.2	11.3		-3.9		
Deady MS	360	358		-2	16.7	14.7		-2.0	351	336		-15	23.2	21.6		-1.6		
Edison MS	346	383		37	10.2	25.1		14.9	341	365		24	18.4	35.4		17.0		
Energized MS	384	416		32	26.0	46.2		20.2	356	365		9	26.0	35.7		9.7		
E-STEM Central MS	347	331		-16	11.1	2.8		-8.3	341	295		-46	17.2	3.7		-13.5		
E-STEM West MS	454	445		-9	62.7	58.0		-4.7	416	400		-16	66.1	56.5		-9.6		
Fleming MS	361	343		-18	19.0	5.2		-13.8	361	321		-40	30.6	14.2		-16.4		
Fondren MS	369	371		2	16.4	14.5		-1.9	357	348		-9	24.8	27.2		2.4		
Fonville MS	351	384		33	11.0	29.5		18.5	336	341		5	14.4	20.3		5.9		
Forest Brook MS	--	354		--	--	8.7		--	--	326		--	--	15.3		--		
Garden Oaks	--	436		--	--	51.0		--	--	457		--	--	69.4		--		
Gregory-Lincoln PK-8	344	383		39	10.3	18.8		8.5	340	372		32	24.4	37.5		13.1		
Hamilton MS	408	412		4	41.9	42.7		0.8	407	410		3	58.9	61.8		2.9		
Hartman MS	379	390		11	24.4	28.4		4.0	363	375		12	34.2	37.0		2.8		
Henry MS	351	375		24	9.7	16.7		7.0	347	350		3	20.9	26.0		5.1		
Hogg MS	415	427		12	42.1	46.3		4.2	418	425		7	60.3	60.7		0.4		
Holland MS	354	366		12	14.1	15.5		1.4	348	334		-14	27.6	21.7		-5.9		
Inspired Acad	332	332		0	5.3	1.5		-3.8	339	333		-6	11.8	15.2		3.4		
Key MS	350	350		0	10.9	9.8		-1.1	342	326		-16	21.7	14.9		-6.8		
Lanier MS	489	470		-19	79.0	65.0		-14.0	506	497		-9	90.9	84.9		-6.0		
Lawson MS	357	388		31	13.9	26.6		12.7	331	353		22	19.4	25.8		6.4		
Leland YMCPA	406	405		-1	38.7	30.6		-8.1	403	401		-2	54.8	56.5		1.7		
Long Acad	348	358		10	14.0	14.1		0.1	347	346		-1	22.4	26.5		4.1		
Mandarin Immersion Magnet	511	516		5	93.3	88.9		-4.4	508	526		18	100.0	95.6		-4.4		
Marshall MS	373	383		10	19.8	19.3		-0.5	356	362		6	27.9	31.3		3.4		
McReynolds MS	376	373		-3	16.0	17.8		1.8	341	352		11	21.6	29.4		7.8		
Meyerland MS	398	398		0	33.7	31.7		-2.0	409	416		7	56.7	63.7		7.0		
Milby HS	*	--		--	*	--		--	*	--		--	*	--		--		
Navarro MS	356	379		23	16.5	19.0		2.5	350	365		15	27.2	34.4		7.2		
Ortiz MS	361	379		18	20.7	20.9		0.2	348	352		4	22.3	25.1		2.8		
Pershing MS	425	413		-12	43.5	38.0		-5.5	434	419		-15	63.3	58.3		-5.0		
Pilgrim Acad	395	380		-15	33.0	22.1		-10.9	371	374		3	38.5	38.5		0.0		
Pin Oak MS	483	489		6	73.2	73.9		0.7	483	490		7	82.8	84.9		2.1		
Reagan Ed Ctr PK-8	369	382		13	19.5	26.5		7.0	367	355		-12	40.7	34.3		-6.4		
Revere MS	371				24.9				365				31.9			-31.9		
Rice School PK-8	404	422		18	43.7	47.1		3.4	421	419		-2	67.5	65.2		-2.3		
Rogers, TH MS	529	528		-1	96.6	89.7		-6.9	561	558		-3	99.3	98.7		-0.6		
Sharpstown Intl	431	438		7	50.3	59.7		9.4	415	421		6	66.2	69.1		2.9		
Stevenson MS	414	419		5	44.6	43.6		-1.0	399	396		-3	53.6	51.9		-1.7		
Sugar Grove MS	327	342		15	6.3	8.4		2.1	327	333		6	9.5	13.5		4.0		
Tanglewood MS	404	413		9	39.0	41.8		2.8	410	408		-2	57.1	57.0		-0.1		
Thomas MS	342	355		13	6.6	8.4		1.8	334	346		12	13.2	23.4		10.2		
Welch MS	342	349		7	11.0	18.8		7.8	322	342		20	13.2	20.3		7.1		
West Briar MS	415	420		5	39.3	40.1		0.8	424	434		10	63.8	68.8		5.0		
Wharton K-8	471	483		12	77.3	86.4		9.1	457	467		10	86.4	90.9		4.5		
Williams MS	336	372		36	3.7	13.4		9.7	333	338		5	16.0	20.8		4.8		
Wilson Montessori	431	411		-20	45.7	29.2		-16.5	463	448		-15	74.3	70.8		-3.5		
Young Scholars	*	395		--	*	15.4		*	*	392		*	*	46.2		*		
YWCPA	411	416		5	36.3	36.3		0.0	461	450		-11	88.8	84.6		-4.2		

Sources: PSAT 8/9 2019 Fall Scores and Fall Benchmarks by Institution, 8th grade, 2/3/2020; PSAT 8/9 & PSAT/NMSQT Reports, Fall 2018 Report

"--" indicates no students tested, no students met the benchmark

* The College Board masks data for fewer than 10 test-takers.

Campus	Mathematics								Evidence-Based Reading and Writing							
	Mean Score			% Met CCR				Mean Score			% Met CCR					
	2018	2019	Change	2018	2019	Change		2018	2019	Change	2018	2019	Change			
Austin HS	370	377	<div></div>	7	15.6	9.7	<div></div>	-5.9	356	366	<div></div>	10	18.6	22.3	<div></div>	3.7
Bellaire HS	470	479	<div></div>	9	56.9	57.7	<div></div>	0.8	473	474	<div></div>	1	69.5	69.3	<div></div>	-0.2
Carnegie HS	570	567	<div></div>	-3	97.9	95.9	<div></div>	-2.0	571	568	<div></div>	-3	98.8	97.4	<div></div>	-1.4
Challenge EC HS	491	487	<div></div>	-4	75.2	72.9	<div></div>	-2.3	494	482	<div></div>	-12	88.0	88.4	<div></div>	0.4
Chavez HS	406	410	<div></div>	4	33.0	30.3	<div></div>	-2.7	394	389	<div></div>	-5	39.6	36.8	<div></div>	-2.8
DeBakey HS	539	545	<div></div>	6	91.1	89.5	<div></div>	-1.6	527	532	<div></div>	5	90.8	95.1	<div></div>	4.3
East EC HS	480	486	<div></div>	6	72.6	67.3	<div></div>	-5.3	469	467	<div></div>	-2	85.5	77.3	<div></div>	-8.2
Eastwood Acad HS	484	487	<div></div>	3	75.7	67.2	<div></div>	-8.5	473	474	<div></div>	1	84.5	78.4	<div></div>	-6.1
Energy Inst HS	439	465	<div></div>	26	45.6	53.4	<div></div>	7.8	439	464	<div></div>	25	60.5	64.4	<div></div>	3.9
E-STEM Central HS	398	417	<div></div>	19	26.0	35.7	<div></div>	9.7	379	392	<div></div>	13	34.2	37.5	<div></div>	3.3
E-STEM West HS	412	421	<div></div>	9	36.1	38.2	<div></div>	2.1	365	380	<div></div>	15	27.8	34.5	<div></div>	6.7
Furr HS	365	384	<div></div>	19	16.0	15.0	<div></div>	-1.0	356	369	<div></div>	13	19.6	27.5	<div></div>	7.9
HAIS HS	478	462	<div></div>	-16	65.7	48.3	<div></div>	-17.4	484	466	<div></div>	-18	86.9	75.8	<div></div>	-11.1
Heights HS	430	439	<div></div>	9	42.8	41.9	<div></div>	-0.9	433	439	<div></div>	6	59.6	61.7	<div></div>	2.1
Houston MSTC HS	371	388	<div></div>	17	16.2	14.2	<div></div>	-2.0	359	366	<div></div>	7	21.1	21.4	<div></div>	0.3
HSLJ	437	444	<div></div>	7	46.2	48.9	<div></div>	2.7	464	442	<div></div>	-22	80.7	69.6	<div></div>	-11.1
Jones HS	386	431	<div></div>	45	15.3	34.6	<div></div>	19.3	389	402	<div></div>	13	33.3	43.2	<div></div>	9.9
Kashmere HS	367	368	<div></div>	1	11.7	10.1	<div></div>	-1.6	364	361	<div></div>	-3	23.4	22.1	<div></div>	-1.3
Kinder HSPVA	525	526	<div></div>	1	84.8	78.6	<div></div>	-6.2	549	545	<div></div>	-4	94.8	91.2	<div></div>	-3.6
Lamar HS	448	460	<div></div>	12	51.6	54.1	<div></div>	2.5	453	464	<div></div>	11	65.9	72.0	<div></div>	6.1
Leland YMCPA	422	435	<div></div>	13	36.2	48.4	<div></div>	12.2	420	427	<div></div>	7	60.3	62.9	<div></div>	2.6
Long Acad	425	455	<div></div>	30	33.3	57.8	<div></div>	24.5	428	428	<div></div>	0	58.3	59.4	<div></div>	1.1
Madison HS	346	377	<div></div>	31	9.3	13.0	<div></div>	3.7	346	360	<div></div>	14	13.7	24.0	<div></div>	10.3
Middle College HS - Fraga	394	444	<div></div>	50	20.7	33.3	<div></div>	12.6	399	445	<div></div>	46	31.0	60.4	<div></div>	29.4
Middle College HS - Gulfon	330	380	<div></div>	50	6.1	3.2	<div></div>	-2.9	338	406	<div></div>	68	12.1	38.7	<div></div>	26.6
Milby HS	388	408	<div></div>	20	22.0	26.8	<div></div>	4.8	379	382	<div></div>	3	31.1	35.0	<div></div>	3.9
Mount Carmel Acad HS	414	400	<div></div>	-14	26.3	14.9	<div></div>	-11.4	421	392	<div></div>	-29	50.0	44.8	<div></div>	-5.2
North Forest HS	362	371	<div></div>	9	11.5	11.6	<div></div>	0.1	348	353	<div></div>	5	14.7	19.4	<div></div>	4.7
North Houston EC HS	477	487	<div></div>	10	71.0	62.2	<div></div>	-8.8	452	455	<div></div>	3	75.4	73.2	<div></div>	-2.2
Northside HS	397	403	<div></div>	6	25.1	20.9	<div></div>	-4.2	392	386	<div></div>	-6	38.3	36.7	<div></div>	-1.6
Scarborough HS	381	378	<div></div>	-3	22.1	13.4	<div></div>	-8.7	369	362	<div></div>	-7	26.5	21.4	<div></div>	-5.1
Sharpstown HS	359	353	<div></div>	-6	12.5	6.5	<div></div>	-6.0	352	346	<div></div>	-6	16.9	15.0	<div></div>	-1.9
Sharpstown Intl	475	464	<div></div>	-11	64.7	55.4	<div></div>	-9.3	448	442	<div></div>	-6	66.8	67.2	<div></div>	0.4
South EC HS	444	462	<div></div>	18	44.3	58.4	<div></div>	14.1	432	449	<div></div>	17	56.6	67.3	<div></div>	10.7
Sterling HS	357	370	<div></div>	13	10.3	12.4	<div></div>	2.1	349	349	<div></div>	0	17.4	17.3	<div></div>	-0.1
TCAH	--	--	--	--	*	--	--	--	--	--	--	--	*	--	--	--
Waltrip HS	404	409	<div></div>	5	29.4	23.6	<div></div>	-5.8	399	402	<div></div>	3	41.3	44.4	<div></div>	3.1
Washington HS	345	368	<div></div>	23	9.6	10.3	<div></div>	0.7	358	355	<div></div>	-3	21.7	21.4	<div></div>	-0.3
Westbury HS	377	390	<div></div>	13	18.1	17.1	<div></div>	-1.0	370	376	<div></div>	6	27.9	30.4	<div></div>	2.5
Westside HS	432	434	<div></div>	2	44.9	39.4	<div></div>	-5.5	434	436	<div></div>	2	57.1	59.7	<div></div>	2.6
Wheatley HS	333	358	<div></div>	25	9.4	6.6	<div></div>	-2.8	352	360	<div></div>	8	17.7	27.7	<div></div>	10.0
Wisdom HS	355	349	<div></div>	-6	9.5	8.6	<div></div>	-0.9	349	333	<div></div>	-16	19.7	11.2	<div></div>	-8.5
Worthing HS	346	344	<div></div>	-2	8.8	6.1	<div></div>	-2.7	345	347	<div></div>	2	13.5	19.3	<div></div>	5.8
Yates HS	333	320	<div></div>	-13	6.1	4.4	<div></div>	-1.7	340	351	<div></div>	11	14.3	16.6	<div></div>	2.3
YWCPA	442	444	<div></div>	2	51.9	41.7	<div></div>	-10.2	474	475	<div></div>	1	82.3	81.7	<div></div>	-0.6

Sources: PSAT/NMSQT 2019 Fall Scores and Fall Benchmarks by Institution, 11th grade, 1/27/2020; PSAT 8/9 & PSAT/NMSQT Reports, Fall 2018 Report

"--" indicates no students tested, no students met the benchmark

Table 2C (p. 23) shows the average PSAT/NMSQT mathematics and ERW scores and the percentage of tenth grade students meeting the math and ERW CCR benchmarks by campus.

- Carnegie Vanguard High School had the highest average score in both mathematics and ERW at 589 and 610, respectively.
- Tenth grade students at Madison High School had the greatest increase in the mean mathematics score at 51 points, followed by E-STEM West High School at 45 points.
- Tenth grade students at E-STEM West High School had the greatest increase in the mean ERW score at 76 points.
- Carnegie High School had the highest percentage of tenth grade students meeting CCR benchmarks for mathematics and ERW at 94.3 percent and 99.6 percent, respectively.
- Tenth grade students at E-STEM West High School had the greatest increase in the percentage of students meeting math CCR benchmarks at 11.8 percentage points, and the greatest increase in the percentage of tenth grade students meeting ERW CCR benchmarks at 24.4 percentage points.

Table 2D (p. 24) shows the average PSAT/NMSQT mathematics and ERW scores and the percentage of eleventh grade students meeting the math and ERW CCR benchmarks by campus.

- Carnegie High School had the highest average score in both mathematics and ERW at 639 and 644, respectively.
- Eleventh grade students at North Forest High School had the greatest increase in the mean mathematics score at 26 scaled-score points.
- Eleventh grade students at YWCPA had the greatest increase in the mean ERW score at 27 scaled-score points.
- YWCPA had the greatest increase in the percentage of students meeting math benchmarks at 14.7 percentage points.
- DeBakey High School had the highest percentage of eleventh grade students meeting CCR benchmarks for both mathematics and ERW at 97.9 percent and 100.0 percent, respectively.
- Eleventh grade students at Middle College High School-Fraga had the greatest increase in the percentage of students meeting ERW benchmarks at 21.4 percentage points.

Campus	Mathematics							Evidence-Based Reading and Writing						
	Mean Score			% Met CCR			Change	Mean Score			% Met CCR			Change
	2018	2019	Change	2018	2019	Change		2018	2019	Change	2018	2019	Change	
Austin HS	390	401	11	10.8	8.5	-2.3		386	387	1	25.4	27.8	2.4	
Bellaire HS	507	488	-19	55.3	46.4	-8.9		513	504	-9	73.3	71.5	-1.8	
Carnegie HS	604	589	-15	95.9	94.3	-1.6		608	610	2	98.4	99.6	1.2	
Challenge EC HS	495	482	-13	57.0	52.0	-5.0		518	514	-4	86.7	90.2	3.5	
Chavez HS	419	429	10	25.2	24.6	-0.6		420	426	6	41.2	45.7	4.5	
DeBakey HS	599	563	-36	96.8	90.0	-6.8		586	573	-13	98.6	97.7	-0.9	
East EC HS	484	470	-14	62.7	45.6	-17.1		498	494	-4	86.4	86.0	-0.4	
Eastwood Acad HS	498	494	-4	57.6	55.4	-2.2		503	500	-3	82.2	88.1	5.9	
Energy Inst HS	459	457	-2	42.3	35.4	-6.9		471	468	-3	62.6	62.3	-0.3	
E-STEM Central HS	434	412	-22	25.6	11.7	-13.9		428	389	-39	46.5	33.3	-13.2	
E-STEM West HS	386	431	45	13.2	25.0	11.8		331	407	76	15.1	39.5	24.4	
Furr HS	379	392	13	6.2	6.6	0.4		385	385	0	22.1	25.5	3.4	
HAIS HS	471	480	9	42.9	51.3	8.4		511	510	-1	83.5	88.7	5.2	
Heights HS	433	440	7	30.1	27.1	-3.0		455	463	8	58.9	65.3	6.4	
Houston MSTC HS	380	395	15	7.6	7.5	-0.1		378	383	5	21.0	25.1	4.1	
HSLJ	446	437	-9	36.1	20.0	-16.1		478	471	-7	76.9	75.8	-1.1	
Jones HS	417	422	5	19.1	20.3	1.2		413	408	-5	39.4	39.2	-0.2	
Kashmere HS	373	391	18	5.4	6.9	1.5		375	393	18	22.2	28.5	6.3	
Kinder HSPVA	548	520	-28	79.8	72.8	-7.0		599	571	-28	98.4	92.8	-5.6	
Lamar HS	460	449	-11	44.7	34.0	-10.7		485	478	-7	69.6	68.3	-1.3	
Leland YMCPA	460	424	-36	38.6	17.0	-21.6		492	453	-39	75.4	61.7	-13.7	
Long Acad	458	430	-28	34.4	17.0	-17.4		453	435	-18	60.7	53.2	-7.5	
Madison HS	335	386	51	2.7	6.1	3.4		370	380	10	14.7	21.5	6.8	
Middle College HS - Fraga	398	425	27	6.1	17.4	11.3		406	388	-18	30.3	26.1	-4.2	
Middle College HS - Gulfon	391	389	-2	12.8	10.4	-2.4		398	371	-27	33.3	10.4	-22.9	
Milby HS	409	416	7	18.3	16.5	-1.8		405	399	-6	37.8	35.0	-2.8	
Mount Carmel Acad HS	439	433	-6	28.4	25.0	-3.4		441	428	-13	52.3	47.6	-4.7	
North Forest HS	377	395	18	5.5	7.4	1.9		376	381	5	21.2	26.5	5.3	
North Houston EC HS	503	474	-29	64.4	45.2	-19.2		496	471	-25	83.1	74.1	-9.0	
Northside HS	410	423	13	19.2	17.1	-2.1		395	413	18	31.5	38.9	7.4	
Scarborough HS	395	392	-3	11.0	9.1	-1.9		397	381	-16	29.5	24.7	-4.8	
Sharpstown HS	371	388	17	7.5	8.8	1.3		362	368	6	12.1	16.6	4.5	
Sharpstown Intl	472	--	--	44.6	--	--		453	--	--	56.1	--	--	
South EC HS	431	455	24	24.8	33.3	8.5		442	449	7	51.2	55.6	4.4	
Sterling HS	378	393	15	8.0	7.2	-0.8		374	382	8	20.3	25.0	4.7	
TCAH	523	486	-37	68.0	60.7	-7.3		569	531	-38	92.0	92.9	0.9	
Waltrip HS	404	422	18	17.9	18.8	0.9		418	426	8	41.9	45.9	4.0	
Washington HS	374	392	18	8.3	7.3	-1.0		373	386	13	19.3	24.7	5.4	
Westbury HS	386	400	14	11.2	11.5	0.3		394	401	7	29.4	33.5	4.1	
Westside HS	453	451	-2	35.4	33.2	-2.2		462	463	1	61.1	61.1	0.0	
Wheatley HS	355	388	33	1.7	7.4	5.7		362	379	17	14.0	23.0	9.0	
Wisdom HS	372	382	10	4.6	3.8	-0.8		363	360	-3	14.2	12.9	-1.3	
Worthing HS	351	396	45	4.4	2.4	-2.0		353	383	30	11.3	23.5	12.2	
Yates HS	361	375	14	4.8	3.1	-1.7		373	374	1	27.9	17.3	-10.6	
YWCPA	469	460	-9	44.7	40.6	-4.1		521	507	-14	94.7	89.9	-4.8	

Sources: PSAT/NMSQT 2019 Fall Scores and Fall Benchmarks by Institution, 10th grade, 1/27/2020; PSAT 8/9 & PSAT/NMSQT Reports, Fall 2018 Report

-- indicates no students tested, no students met the benchmark

Campus	Mathematics							Evidence-Based Reading and Writing						
	Mean Score			% Met CCR			Change	Mean Score			% Met CCR			Change
	2018	2019	Change	2018	2019	Change		2018	2019	Change	2018	2019	Change	
Austin HS	407	412		5	8.8	4.7	-4.1	397	404		7	22.3	19.9	-2.4
Bellaire HS	536	530		-6	53.5	51.3	-2.2	548	547		-1	76.2	76.9	0.7
Carnegie HS	663	639		-24	95.5	95.2	-0.3	658	644		-14	99.2	99.4	0.2
Challenge EC HS	501	505		4	38.8	46.7	7.9	554	549		-5	91.3	86.9	-4.4
Chavez HS	440	446		6	19.3	20.4	1.1	448	453		5	47.1	47.5	0.4
DeBaKey HS	646	632		-14	98.9	97.9	-1.0	634	622		-12	100.0	100.0	0.0
East EC HS	506	489		-17	42.9	34.0	-8.9	528	517		-11	84.1	81.6	-2.5
Eastwood Acad HS	525	510		-15	53.4	50.4	-3.0	524	528		4	84.5	84.3	-0.2
Energy Inst HS	496	487		-9	40.4	33.5	-6.9	510	509		-1	68.3	67.1	-1.2
E-STEM Central HS	430	443		13	13.7	13.2	-0.5	421	444		23	29.1	47.1	18.0
Furr HS	398	408		10	5.3	5.8	0.5	407	407		0	26.2	24.3	-1.9
HAIS HS	502	485		-17	40.4	38.8	-1.6	533	536		3	82.7	79.3	-3.4
Heights HS	451	455		4	20.9	20.4	-0.5	482	483		1	61.9	59.9	-2.0
Houston MSTC HS	402	404		2	6.6	4.8	-1.8	397	400		3	20.2	21.8	1.6
HSLJ	436	448		12	8.9	19.5	10.6	479	500		21	60.2	70.1	9.9
Jones HS	430	423		-7	13.8	3.7	-10.1	429	427		-2	34.0	38.3	4.3
Kashmere HS	374	393		19	2.1	1.9	-0.2	385	389		4	15.4	19.8	4.4
Kinder HSPVA	573	559		-14	77.9	68.3	-9.6	611	627		16	94.2	98.4	4.2
Lamar HS	488	485		-3	39.0	37.3	-1.7	512	514		2	68.9	71.0	2.1
Leland YMCPA	517	479		-38	48.8	26.1	-22.7	534	518		-16	83.7	76.1	-7.6
Long Acad	465	486		21	28.6	31.6	3.0	476	496		20	52.4	61.4	9.0
Madison HS	385	399		14	3.6	3.5	-0.1	396	399		3	20.1	19.7	-0.4
Middle College HS - Fraga	393	410		17	0.0	10.7	10.7	427	437		10	28.6	50.0	21.4
Middle College HS - Gulfon	386	402		16	5.4	0.0	-5.4	385	387		2	16.2	15.4	-0.8
Milby HS	434	422		-12	16.7	10.6	-6.1	436	425		-11	41.5	33.3	-8.2
Mount Carmel Acad HS	453	456		3	20.5	19.5	-1.0	478	475		-3	55.4	59.8	4.4
North Forest HS	377	403		26	3.0	5.1	2.1	381	396		15	16.8	21.2	4.4
North Houston EC HS	499	504		5	44.3	49.1	4.8	511	529		18	77.4	86.1	8.7
Northside HS	423	425		2	12.3	12.4	0.1	420	417		-3	30.0	30.3	0.3
Scarborough HS	414	416		2	11.8	6.8	-5.0	421	413		-8	31.1	25.0	-6.1
Sharpstown HS	386	408		22	5.2	6.0	0.8	384	399		15	18.0	21.9	3.9
Sharpstown Intl	514	--	--	--	51.5	--	--	509	--	--	--	74.6	--	--
South EC HS	453	458		5	22.9	24.5	1.6	468	482		14	52.4	62.7	10.3
Sterling HS	395	403		8	8.3	5.5	-2.8	403	394		-9	26.7	23.4	-3.3
TCAH	535	516		-19	59.0	51.8	-7.2	579	555		-24	90.2	80.4	-9.8
Waltrip HS	424	432		8	14.2	13.3	-0.9	439	446		7	40.7	43.8	3.1
Washington HS	400	409		9	7.0	11.2	4.2	412	413		1	24.0	27.6	3.6
Westbury HS	403	419		16	8.4	6.1	-2.3	414	429		15	26.7	35.7	9.0
Westside HS	489	478		-11	39.1	32.9	-6.2	497	495		-2	63.5	62.8	-0.7
Wheatley HS	369	382		13	2.1	3.1	1.0	382	388		6	11.6	16.3	4.7
Wisdom HS	393	386		-7	6.4	3.3	-3.1	389	380		-9	20.1	16.3	-3.8
Worthing HS	384	397		13	2.7	2.7	0.0	387	381		-6	15.6	11.3	-4.3
Yates HS	382	385		3	6.3	0.8	-5.4	385	401		16	16.0	24.8	8.8
YWCPA	470	491		21	21.7	36.4	14.7	521	548		27	76.1	93.9	17.8

Sources: PSAT/NMSQT 2019 Fall Scores and Fall Benchmarks by Institution, 11th grade, 1/27/2020; PSAT 8/9 & PSAT/NMSQT Reports, Fall 2018 Report

"--" indicates no students tested, no students met the benchmark

Conclusion

HISD launched the *PSAT for All* initiative in 2003 as way to enroll more students in Advanced Placement courses and prepare them to be successful on the SAT which is required by most colleges. The district-wide initiative enabled all HISD tenth graders to take the PSAT/NMSQT for free. On August 12, 2010, the HISD Board of Education expanded the *PSAT for All* program to include incoming ninth-graders for the 2010–2011 school year. Currently, the district supports participation in the PSAT 8/9 and the PSAT/NMSQT by paying for the exams in grades 8 through 10, resulting in participation rates that surpass those of the state and the nation.

Over the past five years, PSAT 8/9 participation for eighth grade students has increased by 278 students from 10,907 to 11,185 and eleventh grade participation on the PSAT/NMSQT has increased by 195 students from 9,342 to 9,537. In 2019, the district administered the PSAT to 79 percent of students in grade 10 and 82 percent of students in grade 8. This exposure to college readiness and entrance exams such as the PSAT represents an integral step to succeeding on the SAT, a widely accepted college entrance exam.

An analysis of performance on the PSAT 8/9 and the PSAT/NMSQT revealed that mean subject and total scores for the district were lower than those for Texas and the total group at all grade levels. Mean math scores were higher than ERW scores for grades eight and nine, but math scores were still lower than their state and total group counterparts. Conversely, mean ERW scores were higher than mean math scores for grades ten and eleven, but ERW scores were still lower than their state and total group counterparts. Students at all grade levels were less likely to meet CCR benchmarks compared to their state and total group counterparts. Performance differences existed across student groups in both assessments as well as across campuses. In addition, from 2015 to 2019, the percentage of ninth grade Asian, White, Two or More Races, Hispanic, African American, and all students meeting both CCR and math benchmarks increased, and the percentage of students meeting ERW benchmarks for all students, African American, Asian, Hispanic, White, and Two or More Races increased.

¹ The College Board (2019). PSAT/NMSQT: Understanding Scores 2019. Downloaded on February 27, 2020 from <https://collegereadiness.collegeboard.org/pdf/psat-nmsqt-understanding-scores.pdf>

² The College Board (2019). PSAT 8/9: Understanding Scores September 2018–March 2019. Downloaded on February 27, 2020 from <https://collegereadiness.collegeboard.org/pdf/psat-8-9-understanding-scores-fall.pdf>