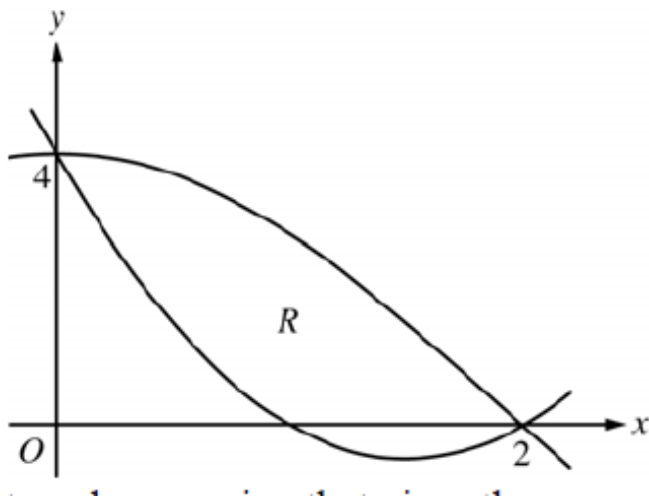


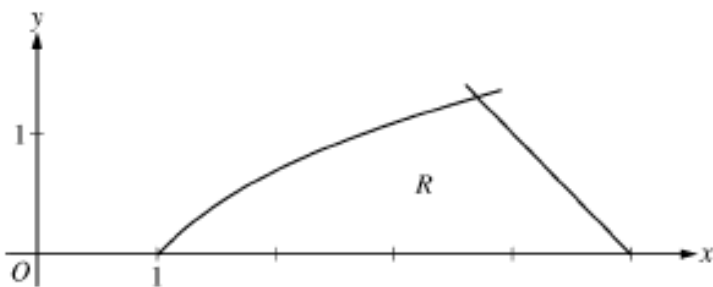
Question 1: No Calculator



Let $f(x) = 2x^2 - 6x + 4$ and $g(x) = 4\cos\left(\frac{1}{4}\pi x\right)$. Let R be the region bounded by the graphs of f and g , as shown in the figure above.

(a) Find the area of R .

Question 2: Use Calculator



Let R be the region in the first quadrant bounded by the x -axis and the graphs of $y = \ln x$ and $y = 5 - x$, as shown in the figure above.

(a) Find the area of R .