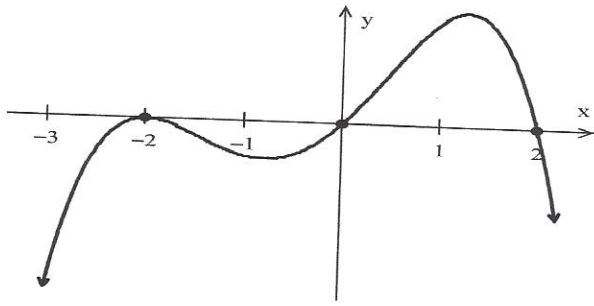


## PC & CAB

4. (AB/BC, calculator neutral)



{ POW #26 (PC)  
HOW #26 (CAB)

In the figure above,  $f'$ , the derivative of function  $f$ , is shown.  $f$  is a twice differentiable function on  $x \in (-\infty, \infty)$ .  $f''(-0.8) = 0$  and  $f''(1.3) = 0$ .

both

(a) Name the value(s) of  $x$  for which  $f$  has a relative minimum. Justify your answer.

both

(b) For what values of  $x$  is  $f$  increasing? Justify your answer.

both

(c) For what values of  $x$  is the graph of  $f$  concave down? Justify your answer.

CAB  
only

(d) Is  $\frac{f(-0.5) - f(0)}{-0.5 - 0}$  positive or negative? Justify your answer.

## PC and CP : POW 26

1) Study and copy example #3 on page 978, into your note book.

2) Explain the meaning of Quotient, Divisor, dividend, and remainder using 122 and 3