



# **JAMES MADISON HIGH SCHOOL**

*LEADING THROUGH EXCELLENCE AND EFFICIENCY*



13719 White Heather Drive  
Houston, TX 77045 – 4421

Yolanda Bruce, Principal  
Tel: 713-433-9801  
Fax: 713-434-5242

## **SDMC Agenda March 29, 2023, 6:00pm**

### **Call to Order**

Meeting was called to order by Principal Bruce at 6:00 pm

### **Introductions**

SDMC members present: Principal Bruce, Dr. Lewis, Ms. Blanchard, Ms. Reyes

### **Enrollment**

Enrollment was reviewed from Q2 SDMC meeting against current enrollment

#### **SDMC Q2 Enrollment**

- Total Enrollment 1952
- 9<sup>th</sup> Grade – 606 students
- 10<sup>th</sup> Grade – 519 students
- 11<sup>th</sup> Grade – 428 students
- 12<sup>th</sup> Grade – 399 students

#### **SDMC Q3 Enrollment**

- Total Enrollment 1879
- 9th Grade – students - 576
- 10th Grade – students - 514
- 11th Grade – students - 393
- 12th Grade – students – 396

Principal Bruce indicates that it is a difference of 39 students

### **HS Allotment**

Principal Bruce indicates that HS allotment will be reduced by 50%. She further elaborates that this is not just a Madison issue but something that will be cut for all high schools in HISD. She provided the example that if a school normally receives 100k in HS allotment then they would now receive 50K in that budget. This could potentially affect staffing.

### **Cafeteria Murals**

Murals are currently going up in Cafeteria B. Principal Bruce showed pictures of what the murals will look like in addition to their status.

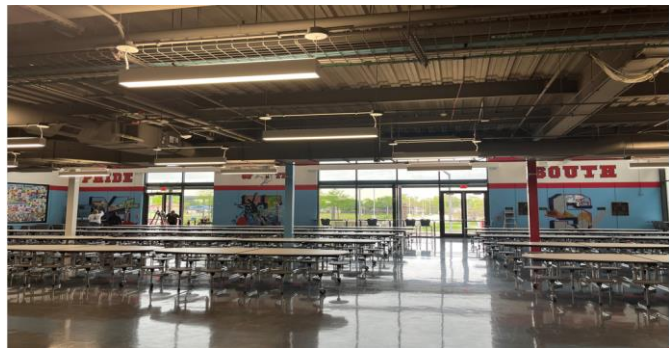


**JAMES MADISON HIGH SCHOOL**  
*LEADING THROUGH EXCELLENCE AND EFFICIENCY*



13719 White Heather Drive  
 Houston, TX 77045 – 4421

Yolanda Bruce, Principal  
 Tel: 713-433-9801  
 Fax: 713-434-5242



**Possible STEM +M Logo** - Principal Bruce reviewed the current logo and asked for suggestions/recommendations to the current logo. None were offered. The logo presented is below.

**JAMES MADISON**  
**STEM + M**  
**ACADEMY**

Principal Bruce ended the meeting at 6:15pm.