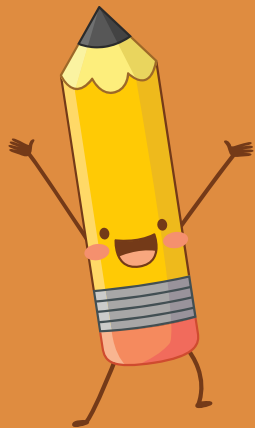


# Golfcrest Elementary School

Need to Know INFO  
Informacion que Necesitas Saber

2023-2024



# Welcome to Golfcrest!

- We look forward to a great year of learning.
- Esperamos un gran año de aprendizaje.
- Goals for the school year are:
  - To help students reach academic success.
  - For parents to team up and work with Teachers and staff for the growth and steadiness of the student.
- Las metas para el año escolar son:
  - Para ayudar a los estudiantes a alcanzar el éxito académico.
  - Para que los padres se unan y trabajen en equipo con los maestros y el personal para el crecimiento y la estabilidad del estudiante.



# Who do I Contact for....



- Most of your questions or concerns should be directed to the classroom Teacher. If you wish to meet with the Teacher, please contact the Teacher via class dojo. Teachers are responsive for parent and students needs in a timely manner.
- To set an appointment to meet with school principal and or assistant principal please contact the school administrative assistant(secretary).
- To set an appointment with the school counselor, nurse, wraparound specialist or another non-Teacher staff member please reach out to Ms. Diaz(front office receptionist) for further assistance.
- If you wish to volunteer to assist Teachers, be a cafeteria monitor, help with events or chaperone fieldtrips please see Ms. Diaz.
- You need to change your address, phone number, or update student records please see Mrs. Garcia.

# ¿Con quién me comunico para....



- La mayoría de sus preguntas o inquietudes deben dirigirse al maestro del salón de clases. Si desea reunirse con el maestro, comuníquese con el maestro a través del dojo de clase. Los maestros responden a las necesidades de los padres y los estudiantes de manera oportuna.
- Para programar una cita para reunirse con el director o el subdirector de la escuela, comuníquese con la asistente administrativa de la escuela.
- Para programar una cita con el consejero escolar, la enfermera, el especialista integral u otro miembro del personal que no sea maestro, comuníquese con la Sra. Díaz (repcionista de la oficina principal) para obtener más ayuda.
- Si desea ser voluntario para ayudar a los maestros, ser un monitor de cafetería, ayudar con eventos o acompañar en excursiones, comuníquese con la Sra. Díaz.
- Si necesita cambiar su dirección, número de teléfono o actualizar los registros de los estudiantes, consulte a la Sra. García.



# Lost and Found

---

As we all know some children occasionally misplace and lose items. We are not responsible for lost items, but we wish to assist students and parents by having a lost and found at our campus. Please label clothing on the tag to help identify students' items should they become lost on our campus. The lost and found is in a bin in the front foyer area.

Como todos sabemos, algunos niños ocasionalmente extravían y pierden artículos. No somos responsables por artículos perdidos, pero deseamos ayudar a los estudiantes y padres a tener un objeto perdido y encontrado en nuestro campus. Por favor etiquete la ropa en la etiqueta para ayudar a identificar los artículos de los estudiantes en caso de que se pierdan en nuestro campus. Los objetos perdidos y encontrados están en un contenedor en el área del vestíbulo delantero.

# VIPS and PTO

---

Visit <https://www.houstonisd.org/VIPS> to become approved for volunteering at Golfcrest.

Please join the Golfcrest Parent Group on Facebook at <https://www.facebook.com/GolfcrestPTO/>.

Visite <https://www.houstonisd.org/VIPS> para obtener la aprobación para ser voluntario en Golfcrest.

Únase al grupo de padres de Golfcrest en Facebook en <https://www.facebook.com/GolfcrestPTO/>.

# Academic Calendar

No district scheduled early dismissal days.

All family/holiday vacations should be scheduled during the grayed-out days.

When possible, please plan doctors' appointments after school or on days students are not scheduled to be at school.

If your child misses two consecutive days of school, they must have a doctors note, legal document from a court and or funeral pamphlet upon return to excuse absences.



2023-2024 Academic Calendar Houston Independent School District																																																																																																																																														
<b>July 2023</b> <table border="1"> <tr><td>S</td><td>M</td><td>T</td><td>W</td><td>T</td><td>F</td><td>S</td></tr> <tr><td></td><td></td><td></td><td></td><td></td><td></td><td>1</td></tr> <tr><td>2</td><td>3</td><td>4</td><td>5</td><td>6</td><td>7</td><td>8</td></tr> <tr><td>9</td><td>10</td><td>11</td><td>12</td><td>13</td><td>14</td><td>15</td></tr> <tr><td>16</td><td>17</td><td>18</td><td>19</td><td>20</td><td>21</td><td>22</td></tr> <tr><td>23</td><td>24</td><td>25</td><td>26</td><td>27</td><td>28</td><td>29</td></tr> <tr><td>30</td><td>31</td><td></td><td></td><td></td><td></td><td></td></tr> </table>	S	M	T	W	T	F	S							1	2	3	4	5	6	7	8	9	10	11	12	13	14	15	16	17	18	19	20	21	22	23	24	25	26	27	28	29	30	31						<b>August 2023</b> <table border="1"> <tr><td>Su</td><td>Mo</td><td>Tu</td><td>We</td><td>Th</td><td>Fr</td><td>Sa</td></tr> <tr><td></td><td></td><td>1</td><td>2</td><td>3</td><td>4</td><td>5</td></tr> <tr><td>6</td><td>7</td><td>8</td><td>9</td><td>10</td><td>11</td><td>12</td></tr> <tr><td>13</td><td>14</td><td>15</td><td>16</td><td>17</td><td>18</td><td>19</td></tr> <tr><td>20</td><td>21</td><td>22</td><td>23</td><td>24</td><td>25</td><td>26</td></tr> <tr><td>27</td><td>28</td><td>29</td><td>30</td><td>31</td><td></td><td></td></tr> </table>	Su	Mo	Tu	We	Th	Fr	Sa			1	2	3	4	5	6	7	8	9	10	11	12	13	14	15	16	17	18	19	20	21	22	23	24	25	26	27	28	29	30	31			<b>September 2023</b> <table border="1"> <tr><td>S</td><td>M</td><td>T</td><td>W</td><td>T</td><td>F</td><td>S</td></tr> <tr><td></td><td></td><td></td><td></td><td></td><td></td><td>1</td></tr> <tr><td>2</td><td>3</td><td>4</td><td>5</td><td>6</td><td>7</td><td>8</td></tr> <tr><td>9</td><td>10</td><td>11</td><td>12</td><td>13</td><td>14</td><td>15</td></tr> <tr><td>16</td><td>17</td><td>18</td><td>19</td><td>20</td><td>21</td><td>22</td></tr> <tr><td>23</td><td>24</td><td>25</td><td>26</td><td>27</td><td>28</td><td>29</td></tr> <tr><td>30</td><td></td><td></td><td></td><td></td><td></td><td></td></tr> </table>	S	M	T	W	T	F	S							1	2	3	4	5	6	7	8	9	10	11	12	13	14	15	16	17	18	19	20	21	22	23	24	25	26	27	28	29	30						
S	M	T	W	T	F	S																																																																																																																																								
						1																																																																																																																																								
2	3	4	5	6	7	8																																																																																																																																								
9	10	11	12	13	14	15																																																																																																																																								
16	17	18	19	20	21	22																																																																																																																																								
23	24	25	26	27	28	29																																																																																																																																								
30	31																																																																																																																																													
Su	Mo	Tu	We	Th	Fr	Sa																																																																																																																																								
		1	2	3	4	5																																																																																																																																								
6	7	8	9	10	11	12																																																																																																																																								
13	14	15	16	17	18	19																																																																																																																																								
20	21	22	23	24	25	26																																																																																																																																								
27	28	29	30	31																																																																																																																																										
S	M	T	W	T	F	S																																																																																																																																								
						1																																																																																																																																								
2	3	4	5	6	7	8																																																																																																																																								
9	10	11	12	13	14	15																																																																																																																																								
16	17	18	19	20	21	22																																																																																																																																								
23	24	25	26	27	28	29																																																																																																																																								
30																																																																																																																																														
<b>October 2023</b> <table border="1"> <tr><td>S</td><td>M</td><td>T</td><td>W</td><td>T</td><td>F</td><td>S</td></tr> <tr><td>1</td><td>2</td><td>3</td><td>4</td><td>5</td><td>6</td><td>7</td></tr> <tr><td>8</td><td>9</td><td>10</td><td>11</td><td>12</td><td>13</td><td>14</td></tr> <tr><td>15</td><td>16</td><td>17</td><td>18</td><td>19</td><td>20</td><td>21</td></tr> <tr><td>22</td><td>23</td><td>24</td><td>25</td><td>26</td><td>27</td><td>28</td></tr> <tr><td>29</td><td>30</td><td>31</td><td></td><td></td><td></td><td></td></tr> </table>	S	M	T	W	T	F	S	1	2	3	4	5	6	7	8	9	10	11	12	13	14	15	16	17	18	19	20	21	22	23	24	25	26	27	28	29	30	31					<b>November 2023</b> <table border="1"> <tr><td>S</td><td>M</td><td>T</td><td>W</td><td>T</td><td>F</td><td>S</td></tr> <tr><td></td><td></td><td></td><td>1</td><td>2</td><td>3</td><td>4</td></tr> <tr><td>5</td><td>6</td><td>7</td><td>8</td><td>9</td><td>10</td><td>11</td></tr> <tr><td>12</td><td>13</td><td>14</td><td>15</td><td>16</td><td>17</td><td>18</td></tr> <tr><td>19</td><td>20</td><td>21</td><td>22</td><td>23</td><td>24</td><td>25</td></tr> <tr><td>26</td><td>27</td><td>28</td><td>29</td><td>30</td><td></td><td></td></tr> </table>	S	M	T	W	T	F	S				1	2	3	4	5	6	7	8	9	10	11	12	13	14	15	16	17	18	19	20	21	22	23	24	25	26	27	28	29	30			<b>December 2023</b> <table border="1"> <tr><td>S</td><td>M</td><td>T</td><td>W</td><td>T</td><td>F</td><td>S</td></tr> <tr><td></td><td></td><td></td><td></td><td></td><td></td><td>1</td></tr> <tr><td>2</td><td>3</td><td>4</td><td>5</td><td>6</td><td>7</td><td>8</td></tr> <tr><td>9</td><td>10</td><td>11</td><td>12</td><td>13</td><td>14</td><td>15</td></tr> <tr><td>16</td><td>17</td><td>18</td><td>19</td><td>20</td><td>21</td><td>22</td></tr> <tr><td>23</td><td>24</td><td>25</td><td>26</td><td>27</td><td>28</td><td>29</td></tr> <tr><td>30</td><td></td><td></td><td></td><td></td><td></td><td></td></tr> </table>	S	M	T	W	T	F	S							1	2	3	4	5	6	7	8	9	10	11	12	13	14	15	16	17	18	19	20	21	22	23	24	25	26	27	28	29	30													
S	M	T	W	T	F	S																																																																																																																																								
1	2	3	4	5	6	7																																																																																																																																								
8	9	10	11	12	13	14																																																																																																																																								
15	16	17	18	19	20	21																																																																																																																																								
22	23	24	25	26	27	28																																																																																																																																								
29	30	31																																																																																																																																												
S	M	T	W	T	F	S																																																																																																																																								
			1	2	3	4																																																																																																																																								
5	6	7	8	9	10	11																																																																																																																																								
12	13	14	15	16	17	18																																																																																																																																								
19	20	21	22	23	24	25																																																																																																																																								
26	27	28	29	30																																																																																																																																										
S	M	T	W	T	F	S																																																																																																																																								
						1																																																																																																																																								
2	3	4	5	6	7	8																																																																																																																																								
9	10	11	12	13	14	15																																																																																																																																								
16	17	18	19	20	21	22																																																																																																																																								
23	24	25	26	27	28	29																																																																																																																																								
30																																																																																																																																														
<b>January 2024</b> <table border="1"> <tr><td>S</td><td>M</td><td>T</td><td>W</td><td>T</td><td>F</td><td>S</td></tr> <tr><td></td><td>1</td><td>2</td><td>3</td><td>4</td><td>5</td><td>6</td></tr> <tr><td>7</td><td>8</td><td>9</td><td>10</td><td>11</td><td>12</td><td>13</td></tr> <tr><td>14</td><td>15</td><td>16</td><td>17</td><td>18</td><td>19</td><td>20</td></tr> <tr><td>21</td><td>22</td><td>23</td><td>24</td><td>25</td><td>26</td><td>27</td></tr> <tr><td>28</td><td>29</td><td>30</td><td>31</td><td></td><td></td><td></td></tr> </table>	S	M	T	W	T	F	S		1	2	3	4	5	6	7	8	9	10	11	12	13	14	15	16	17	18	19	20	21	22	23	24	25	26	27	28	29	30	31				<b>February 2024</b> <table border="1"> <tr><td>S</td><td>M</td><td>T</td><td>W</td><td>T</td><td>F</td><td>S</td></tr> <tr><td></td><td></td><td></td><td>1</td><td>2</td><td>3</td><td></td></tr> <tr><td>4</td><td>5</td><td>6</td><td>7</td><td>8</td><td>9</td><td>10</td></tr> <tr><td>11</td><td>12</td><td>13</td><td>14</td><td>15</td><td>16</td><td>17</td></tr> <tr><td>18</td><td>19</td><td>20</td><td>21</td><td>22</td><td>23</td><td>24</td></tr> <tr><td>25</td><td>26</td><td>27</td><td>28</td><td>29</td><td></td><td></td></tr> </table>	S	M	T	W	T	F	S				1	2	3		4	5	6	7	8	9	10	11	12	13	14	15	16	17	18	19	20	21	22	23	24	25	26	27	28	29			<b>March 2024</b> <table border="1"> <tr><td>S</td><td>M</td><td>T</td><td>W</td><td>T</td><td>F</td><td>S</td></tr> <tr><td></td><td></td><td></td><td></td><td></td><td></td><td>1</td></tr> <tr><td>2</td><td>3</td><td>4</td><td>5</td><td>6</td><td>7</td><td>8</td></tr> <tr><td>9</td><td>10</td><td>11</td><td>12</td><td>13</td><td>14</td><td>15</td></tr> <tr><td>16</td><td>17</td><td>18</td><td>19</td><td>20</td><td>21</td><td>22</td></tr> <tr><td>23</td><td>24</td><td>25</td><td>26</td><td>27</td><td>28</td><td>29</td></tr> <tr><td>30</td><td>31</td><td></td><td></td><td></td><td></td><td></td></tr> </table>	S	M	T	W	T	F	S							1	2	3	4	5	6	7	8	9	10	11	12	13	14	15	16	17	18	19	20	21	22	23	24	25	26	27	28	29	30	31												
S	M	T	W	T	F	S																																																																																																																																								
	1	2	3	4	5	6																																																																																																																																								
7	8	9	10	11	12	13																																																																																																																																								
14	15	16	17	18	19	20																																																																																																																																								
21	22	23	24	25	26	27																																																																																																																																								
28	29	30	31																																																																																																																																											
S	M	T	W	T	F	S																																																																																																																																								
			1	2	3																																																																																																																																									
4	5	6	7	8	9	10																																																																																																																																								
11	12	13	14	15	16	17																																																																																																																																								
18	19	20	21	22	23	24																																																																																																																																								
25	26	27	28	29																																																																																																																																										
S	M	T	W	T	F	S																																																																																																																																								
						1																																																																																																																																								
2	3	4	5	6	7	8																																																																																																																																								
9	10	11	12	13	14	15																																																																																																																																								
16	17	18	19	20	21	22																																																																																																																																								
23	24	25	26	27	28	29																																																																																																																																								
30	31																																																																																																																																													
<b>April 2024</b> <table border="1"> <tr><td>S</td><td>M</td><td>T</td><td>W</td><td>T</td><td>F</td><td>S</td></tr> <tr><td></td><td>1</td><td>2</td><td>3</td><td>4</td><td>5</td><td>6</td></tr> <tr><td>7</td><td>8</td><td>9</td><td>10</td><td>11</td><td>12</td><td>13</td></tr> <tr><td>14</td><td>15</td><td>16</td><td>17</td><td>18</td><td>19</td><td>20</td></tr> <tr><td>21</td><td>22</td><td>23</td><td>24</td><td>25</td><td>26</td><td>27</td></tr> <tr><td>28</td><td>29</td><td>30</td><td></td><td></td><td></td><td></td></tr> </table>	S	M	T	W	T	F	S		1	2	3	4	5	6	7	8	9	10	11	12	13	14	15	16	17	18	19	20	21	22	23	24	25	26	27	28	29	30					<b>May 2024</b> <table border="1"> <tr><td>S</td><td>M</td><td>T</td><td>W</td><td>T</td><td>F</td><td>S</td></tr> <tr><td></td><td></td><td></td><td>1</td><td>2</td><td>3</td><td>4</td></tr> <tr><td>5</td><td>6</td><td>7</td><td>8</td><td>9</td><td>10</td><td>11</td></tr> <tr><td>12</td><td>13</td><td>14</td><td>15</td><td>16</td><td>17</td><td>18</td></tr> <tr><td>19</td><td>20</td><td>21</td><td>22</td><td>23</td><td>24</td><td>25</td></tr> <tr><td>26</td><td>27</td><td>28</td><td>29</td><td>30</td><td>31</td><td></td></tr> </table>	S	M	T	W	T	F	S				1	2	3	4	5	6	7	8	9	10	11	12	13	14	15	16	17	18	19	20	21	22	23	24	25	26	27	28	29	30	31		<b>June 2024</b> <table border="1"> <tr><td>S</td><td>M</td><td>T</td><td>W</td><td>T</td><td>F</td><td>S</td></tr> <tr><td></td><td></td><td></td><td></td><td></td><td></td><td>1</td></tr> <tr><td>2</td><td>3</td><td>4</td><td>5</td><td>6</td><td>7</td><td>8</td></tr> <tr><td>9</td><td>10</td><td>11</td><td>12</td><td>13</td><td>14</td><td>15</td></tr> <tr><td>16</td><td>17</td><td>18</td><td>19</td><td>20</td><td>21</td><td>22</td></tr> <tr><td>23</td><td>24</td><td>25</td><td>26</td><td>27</td><td>28</td><td>29</td></tr> <tr><td>30</td><td></td><td></td><td></td><td></td><td></td><td></td></tr> </table>	S	M	T	W	T	F	S							1	2	3	4	5	6	7	8	9	10	11	12	13	14	15	16	17	18	19	20	21	22	23	24	25	26	27	28	29	30													
S	M	T	W	T	F	S																																																																																																																																								
	1	2	3	4	5	6																																																																																																																																								
7	8	9	10	11	12	13																																																																																																																																								
14	15	16	17	18	19	20																																																																																																																																								
21	22	23	24	25	26	27																																																																																																																																								
28	29	30																																																																																																																																												
S	M	T	W	T	F	S																																																																																																																																								
			1	2	3	4																																																																																																																																								
5	6	7	8	9	10	11																																																																																																																																								
12	13	14	15	16	17	18																																																																																																																																								
19	20	21	22	23	24	25																																																																																																																																								
26	27	28	29	30	31																																																																																																																																									
S	M	T	W	T	F	S																																																																																																																																								
						1																																																																																																																																								
2	3	4	5	6	7	8																																																																																																																																								
9	10	11	12	13	14	15																																																																																																																																								
16	17	18	19	20	21	22																																																																																																																																								
23	24	25	26	27	28	29																																																																																																																																								
30																																																																																																																																														
<b>Key</b> <ul style="list-style-type: none"> <li>Holidays</li> <li>Teacher Preparation Days (no students)</li> <li>Teacher Development Days (no students)</li> </ul>	<b>Holidays</b> September 4 September 25 November 20-24 December 25-January 5 January 15 March 11-15 March 25 March 29, April 10 May 27 June 19	Labor Day Fall Holiday Thanksgiving Holiday Winter Break Martin Luther King, Jr. Day Spring Break Chavez Huerta Day Spring Holidays Memorial Day Juneteenth																																																																																																																																												
<b>School Day Start and End Times</b> 7:30-3:00 Elementary 8:30-4:00 K-8 and Middle School 8:30-4:10 High School	<b>Significant Dates</b> August 14, 2023 Teachers report to work August 28, 2023 First day of school December 22, 2023 Last day of first semester January 9, 2024 First day of second semester June 5, 2024 Last day of school for students June 6, 2024 Last day for teachers	<b>Grading Cycles</b> August 28-September 29 October 1-November 10 November 13-December 22 January 9-February 27 February 28-April 19 April 22-June 5	<b>Report Card Date</b> October 6 November 17 January 12 March 8 April 26 June 5 (ES, K-8, MS) June 14 (HS)																																																																																																																																											



# Calendario Académico

Ningún distrito programó días de salida temprana.

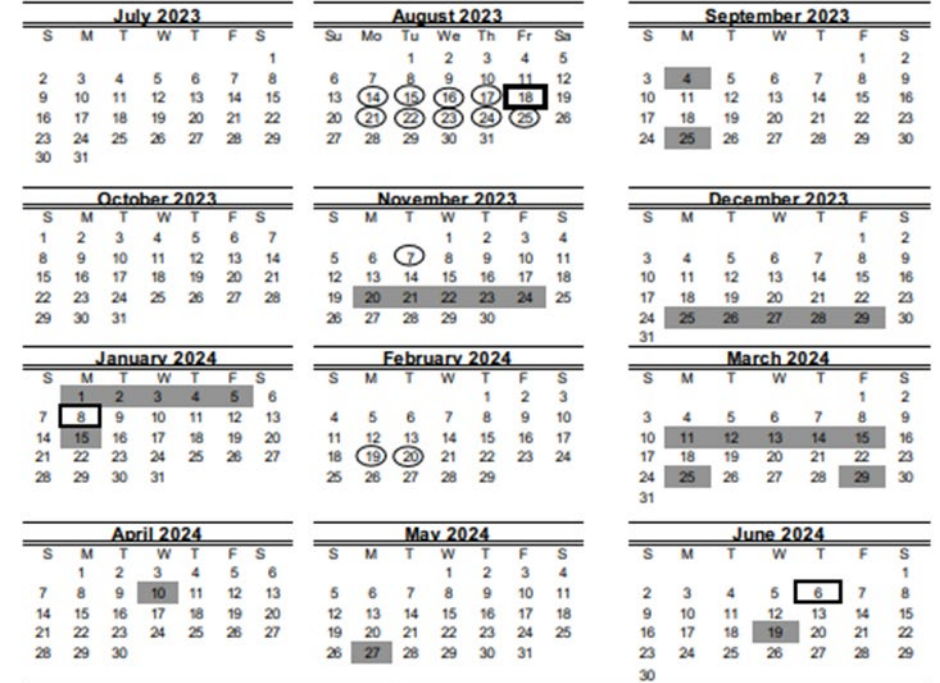
Todas las vacaciones familiares o de vacaciones deben programarse durante los días atenuados.

Cuando sea posible, programe las citas con los médicos después de la escuela o en los días en que los estudiantes no estén programados para estar en la escuela.

Si su hijo falta dos días consecutivos a la escuela, debe tener una nota del médico, un documento legal o un folleto del funeral al regresar para justificar las ausencias.

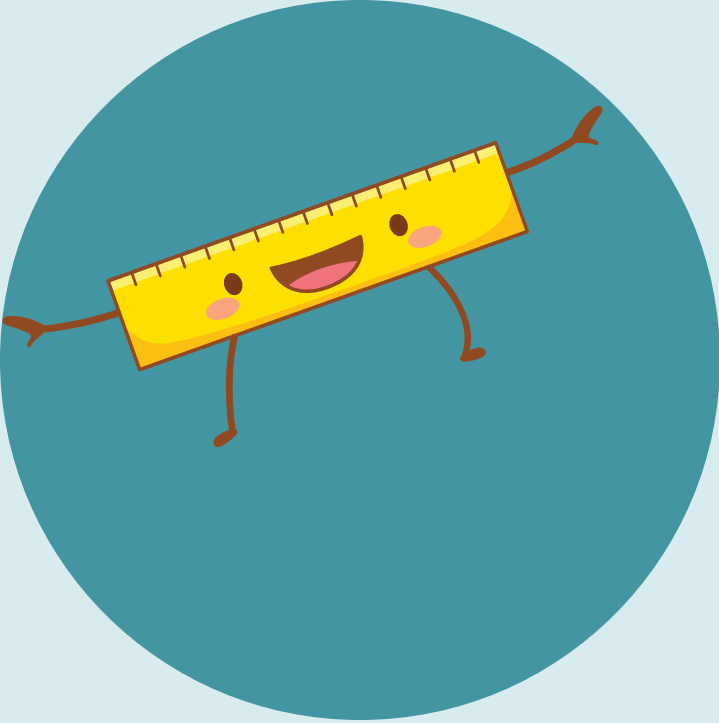


## 2023-2024 Academic Calendar Houston Independent School District



Key		Holidays	
	Holidays	September 4	Labor Day
	Teacher Preparation Days (no students)	September 25	Fall Holiday
	Teacher Development Days (no students)	November 20-24	Thanksgiving Holiday
<b>School Day Start and End Times</b>		December 25-January 5	Winter Break
7:30-3:00	Elementary	January 15	Martin Luther King, Jr. Day
8:30-4:00	K-8 and Middle School	March 11-15	Spring Break
8:30-4:10	High School	March 25	Chavez Huerta Day
		March 29, April 10	Spring Holidays
		May 27	Memorial Day
		June 19	Juneteenth
<b>Significant Dates</b>		<b>Grading Cycles</b>	<b>Report Card Date</b>
August 14, 2023	Teachers report to work	August 28-September 29	October 6
August 28, 2023	First day of school	October 1-November 10	November 17
December 22, 2023	Last day of first semester	November 13-December 22	January 12
January 9, 2024	First day of second semester	January 9-February 27	March 8
June 5, 2024	Last day of school for students	February 28-April 19	April 26
June 6, 2024	Last day for teachers	April 22-June 5	June 5 (ES, K-8, MS) June 14 (HS)





## How do I sign my child out early for an appointment?

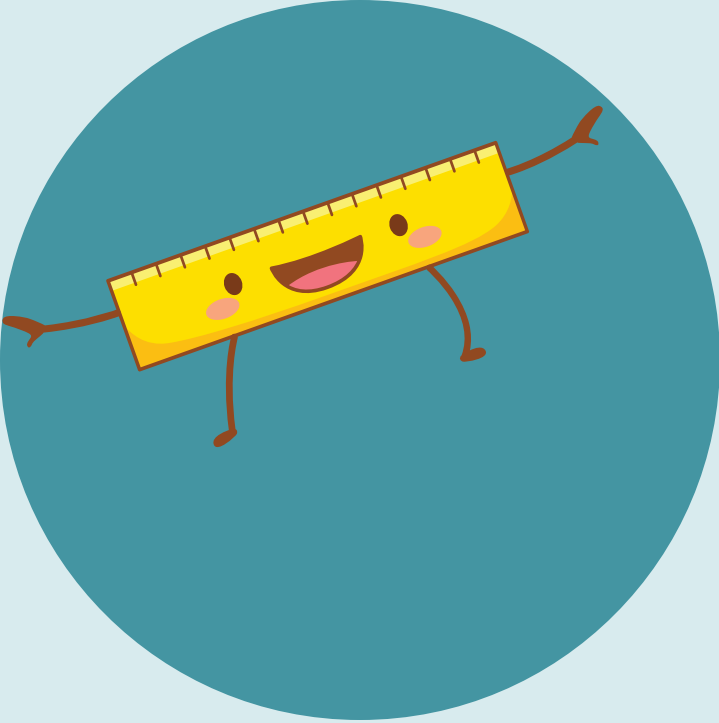
Firstly, make sure the person picking up the student is on file with our school. This person must be on the enrollment sheet or emergency contact form. You can update these records as needed during office hours. It must be a parent with valid photo ID, coming in person at least 24 hours in advance to add, remove or change.

Secondly, when picking a student up early arrive to the school by no later than 2:30p.m. with a valid photo ID. Acceptable forms of photo ID are as follows;

- Texas Driver's license or ID card; (unexpired or expired)
- Driver's license or ID card issued by another U.S. state, U.S. territory, the District of Columbia
- Passport or Passport Card
- Texas Department of Criminal Justice ID
- United States issued Employment Authorization Card
- Permanent Residence Card
- Military Identification Card

**NOTICE**

**PHOTO ID  
REQUIRED**



## ¿Cómo sacar a mi hija/o temprano para una cita?

En primer lugar, asegúrese de que la persona que recogerá al estudiante esté registrada en nuestra escuela. Esta persona debe estar en la hoja de inscripción o en el formulario de contacto de emergencia. Puede actualizar estos registros según sea necesario durante el horario de oficina. Debe ser uno de los padres con una identificación con foto válida, que venga en persona con al menos 24 horas de anticipación.

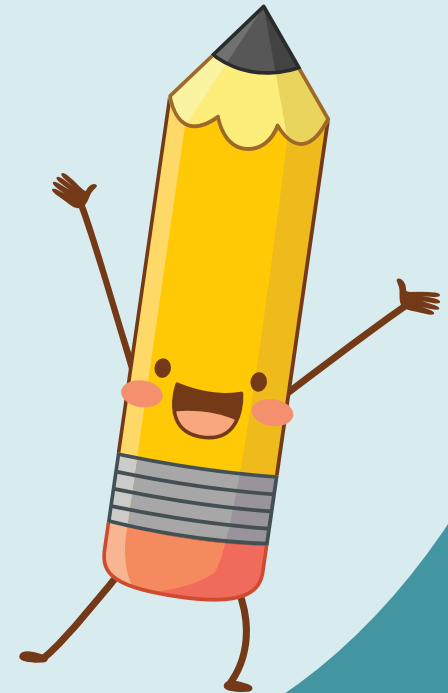
En segundo lugar, llegue a la escuela a más tardar a la 2:30 p. m. con una identificación con foto válida. Las formas aceptables de identificación con foto son las siguientes;

- Licencia de conducir o tarjeta de identificación de Texas; (vigente o vencido)
- Licencia de conducir o tarjeta de identificación emitida por otro estado de EE. UU., territorio de EE. UU., el Distrito de Columbia
- Pasaporte o Tarjeta Pasaporte
- Identificación del Departamento de Justicia Criminal de Texas
- Tarjeta de autorización de empleo emitida en los Estados Unidos
- Tarjeta de Residencia Permanente
- Tarjeta de identificación militar

**NOTICE**

**PHOTO ID  
REQUIRED**

# Let's go to school!



## School Arrival-Student Drop off

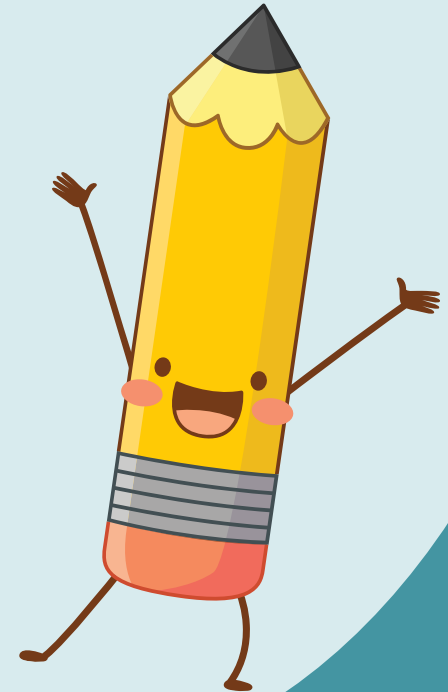
- 1) There is one drop off location which is the circle U in the front of the school.
- 2) If you are driving, you must line up by turning right from Telephone Rd. unto McHenry. You will enter the U driveway by turning right into the school driveway.
- 3) You child should be ready to exit the vehicle by having their school items in hand and quickly unfastening their seatbelt. When their door is opened by a school employee/volunteer they will step out and walk straight towards the front doors (NO PARKING).
- 4) Exit the U driveway by turning right on Fairway.

**It is not allowed to park and drop off your student at the door. Everyone arriving in a vehicle should follow the car line and drop off procedures.**



# Llegada a la escuela-Dejar a los estudiantes

Vamos  
a  
escuela!



- 1) Hay un lugar de entrega que es el círculo U en el frente de la escuela.
- 2) Si conduce, debe hacer fila girando a la derecha desde Telephone Rd. a McHenry. Entrará en el camino de entrada U girando a la derecha en el camino de entrada de la escuela.
- 3) Su hijo debe estar listo para salir del vehículo teniendo sus artículos escolares en la mano y desabrochándose rápidamente el cinturón de seguridad. Cuando su puerta sea abierta por un empleado/voluntario de la escuela, saldrán y caminarán directamente a la escuela (NO ESTACIONAMIENTO).
- 4) Salga de la entrada en forma de U girando a la derecha en Fairway.

**No está permitido estacionar y dejar a su estudiante en la puerta. Todos los que lleguen en un vehículo deben seguir la línea y los procedimientos del automóvil.**





# School Dismissal- Student Pick-Up

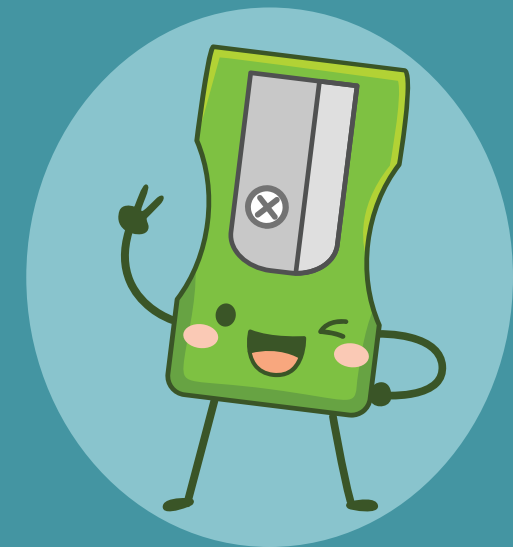


Car Rider- This is Golfcrest's primary way for students to go home. Every student will automatically be assigned as a car rider. In the event you do not own a car and will be walking daily please see the front office for accommodations.



Bus Rider- This dismissal option is for private bus operators. Parents are responsible for payment and accept all liability with the student leaving with a hired private bus.

Absolutely **NO PARKING** on the sides of the street, apartment complex, or in front of people's homes to pick up your student. There is city signs posted and failure to comply could result in the towing or ticketing of your vehicle.



# Salida de la escuela - Recogida de estudiantes

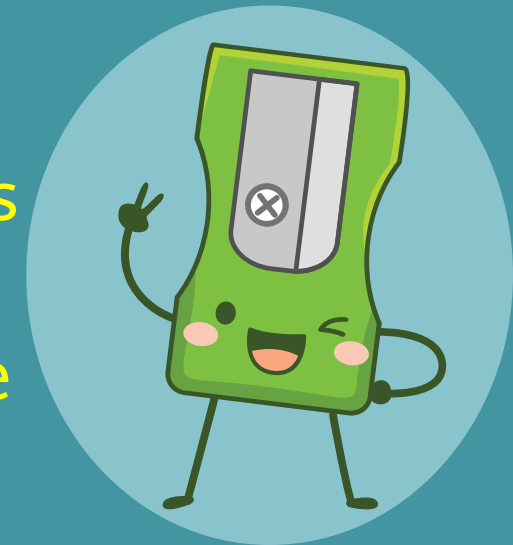


Car Rider- Esta es la forma principal de Golfcrest para que los estudiantes se vayan a casa. A cada estudiante se le asignará automáticamente como conductor de automóvil. En el caso de que no tenga un automóvil y vaya a caminar todos los días, consulte la oficina principal para obtener alojamiento.



Bus Rider: esta opción de despido es para operadores de autobuses privados. Los padres son responsables del pago y aceptan toda responsabilidad con el estudiante que se va con un autobús privado alquilado.

Absolutamente **NO ESTACIONAR** a los lados de la calle, complejo de apartamentos o frente a las casas de las personas para recoger a su estudiante. Hay letreros de la ciudad publicados y el incumplimiento podría resultar en el remolque o la multa de su vehículo.





# Late Drop off and Pick-up

Beginning after the first week of school any student arriving to school after 7:44 will need to be escorted into the office by an adult to sign our late drop-off sheet. If the student is shown to exhibit a pattern of being late to school, a parent will be scheduled to speak with an Administrator.

Beginning after the first week of school any student not picked up at dismissal by 3:14p.m. will need to be picked up at the front foyer. You will then be asked to sign a late pick-up sheet and your student will be called. If the student is shown to exhibit a pattern of being picked up late from school, a parent will be scheduled to speak with an Administrator.

Oh, NO I'm LATE!



# Dejar y Recoger Tarde

A partir de la primera semana de clases, cualquier estudiante que llegue a la escuela después de las 7:44 deberá ser acompañado a la oficina por un adulto para firmar nuestra hoja de entrega tardía. Si se demuestra que el estudiante exhibe un patrón de llegar tarde a la escuela, se programará que uno de los padres hable con un administrador.

Comenzando después de la primera semana de clases, cualquier estudiante que no sea recogido a la salida a las 3:14 p. m. tendrá que ser recogido en el vestíbulo delantero. Luego se le pedirá que firme una hoja de recogida tardía y se llamará a su estudiante. Si se demuestra que el estudiante exhibe un patrón de ser recogido tarde de la escuela, se programará que uno de los padres hable con un administrador.

Oh, NO, llego TARDE!



# Birthday Celebrations

On or near a student's birthday we will allow parents to celebrate with their son or daughter by having lunch with them during their scheduled lunch period. You may also hand the Teacher cupcakes and or goodie bags when picking up their class from lunch to distribute during recess. Items must be store bought. Please refrain from bringing high allergy type of items to share with other students (examples below). There is to be no classroom celebrations. This time is for learning. Please call at least one week in advance and speak to Ms. Diaz to book your lunch appointment.



These 8 foods make up 90% of all food allergies in the U.S.



# Celebraciones de cumpleaños

En o cerca del cumpleaños de un estudiante, permitiremos que los padres celebren con su hijo o hija almorzando con ellos durante su período de almuerzo programado. También puede traer pastelitos y bolsas de dulces para compartir con sus compañeros de clase durante el almuerzo. Los artículos deben comprarse en la tienda. Por favor, absténgase de traer alimentos de alta alergia para compartir con otros estudiantes (ejemplos a continuación). No habrá celebraciones en el salón de clases. Este tiempo es para aprender. Llame al menos con una semana de anticipación y hable con la Sra. Díaz para reservar su almuerzo de celebración.



These 8 foods make up 90% of all food allergies in the U.S.



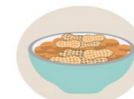
Eggs



Fish



Milk



Peanuts



Shellfish



Soy



Tree nuts



Wheat

# Social Media- Access INFO



Please follow all our social media accounts to stay updated. It's also a great way to receive reminders on upcoming events.

Siga todas nuestras cuentas de redes sociales para mantenerse actualizado. También es una excelente manera de recibir recordatorios sobre próximos eventos.

DOJO <https://www.classdojo.com/invite/?s=53126a3b3209e8e004012d44>

School Website <https://www.houstonisd.org/golfcrest>

Twitter [https://mobile.twitter.com/golfcrest\\_hisd?lang=en](https://mobile.twitter.com/golfcrest_hisd?lang=en)

Facebook <https://www.facebook.com/Golfcrest/>

Instagram [https://instagram.com/golfcrest\\_hisd?igshid=YmMyMTA2M2Y=](https://instagram.com/golfcrest_hisd?igshid=YmMyMTA2M2Y=)



TikTok [@golfcresthisd](#)

# Teacher Conferences-Conferencias de maestro/a

In order to speak or meet with your child's Teacher, you must schedule a conference during the Teacher's planning time. You can do this by sending a message via DOJO or by emailing the Teacher and allowing them 48hrs. to respond and set up a conference. Please know that you will not be allowed to just show up and go to the classroom and talk to the Teacher at any time regardless of the situation. If you have a pressing concern, you feel needs immediate attention, please call the front office and leave your name, student name, phone number and a brief explanation of what you need to confer. An Administrator or appropriate personal will follow-up promptly to discuss your concern.

Para hablar o reunirse con el maestro de su hijo, debe programar una conferencia durante el tiempo de planificación del maestro. Puede hacerlo enviando un mensaje a través de DOJO o enviando un correo electrónico al maestro y dándoles 48 horas. para responder y programar una conferencia. Tenga en cuenta que no se le permitirá simplemente presentarse e ir al salón de clases y hablar con el maestro en cualquier momento, independientemente de la situación. Si tiene una inquietud urgente, cree que necesita atención inmediata, llame a la oficina principal y deje su nombre, el nombre del estudiante, el número de teléfono y una breve explicación de lo que necesita consultar. Un administrador o el personal apropiado hará un seguimiento de inmediato para analizar su inquietud.

