

Room Operations

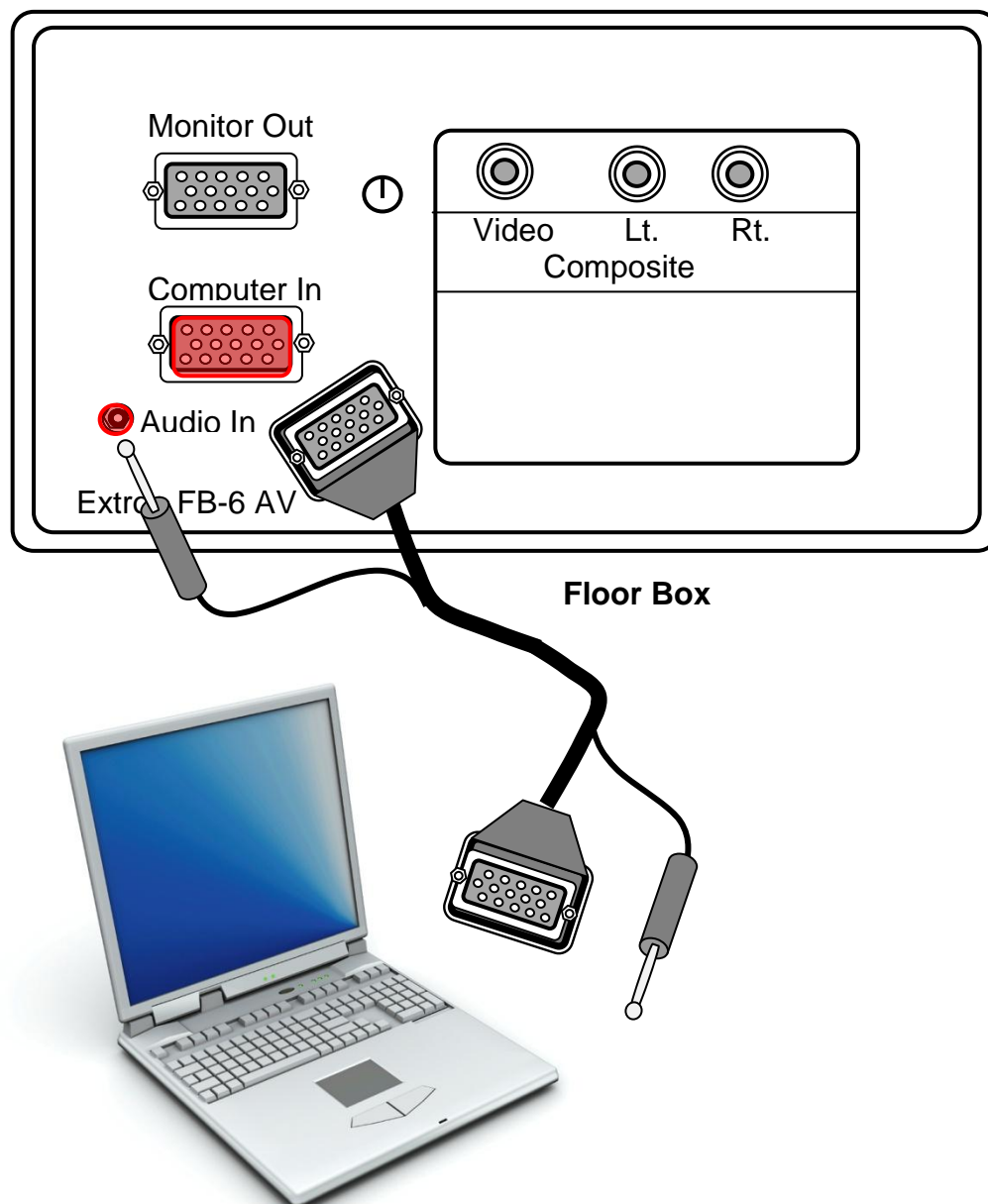
for Rooms

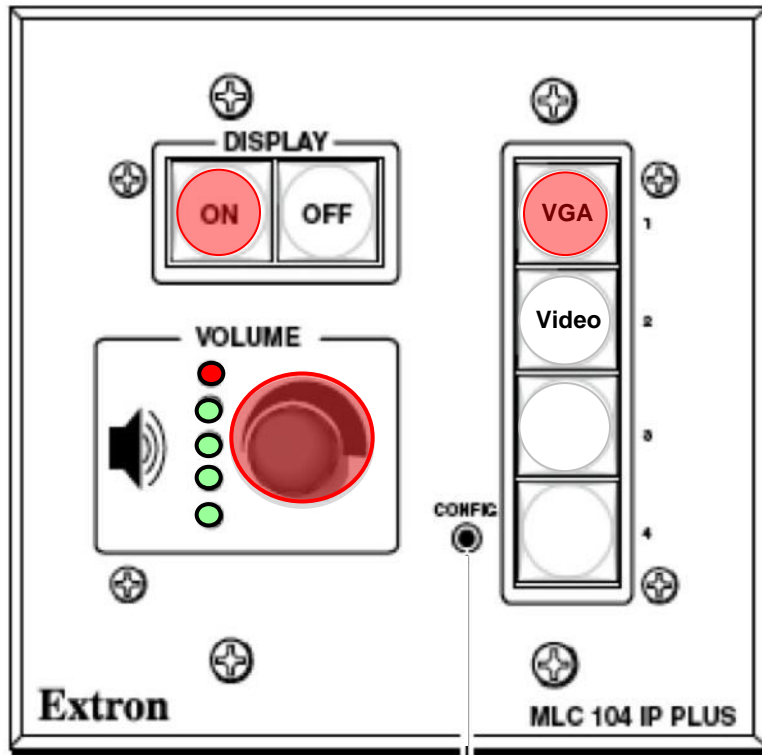
2C01-2C12, 2E26, 2W26, 3E26, 3W26

To increase the successful projection of your computer, you should know how to:

- adjust the Resolution Ratio (1024 x 760) pixels
- place the computer Display in Dual, Clone, or Mirror Mode

- Plug the VGA cable into the **Computer In** jack in the Floor Box. If needing audio, plug the audio cable into the mini **Audio In** jack in the Floor Box.
- Plug the opposite end of the VGA cable into the computer's **VGA Out** jack and the mini audio cable into the **Headphones Out** jack.





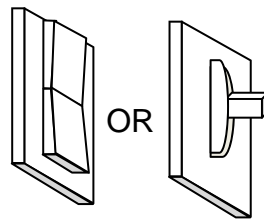
Wall Controller

Using the Wall Controller:

- Press the **Display On** button to start the projector.
- Press the **VGA** button.

Turn the computer on.

- Lower the screen using the white toggle switch on the wall.



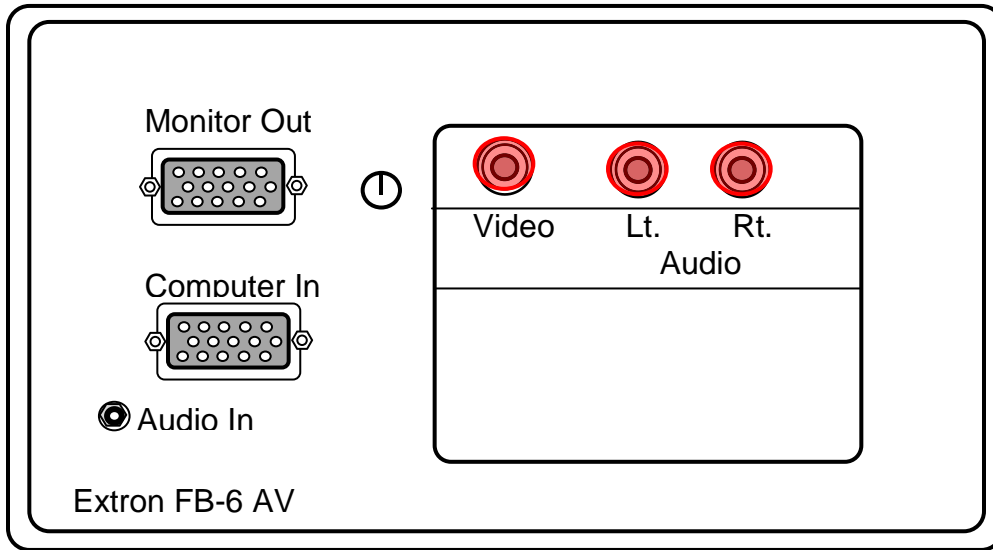
Screen Toggle Switch

It takes about a minute for the projector to be ready, after which you should see the computer's desktop projected on the screen.

- If the desktop is not showing, check to make sure the Resolution Ratio of the computer is set to 1024 x 760 pixels.
- Also check that the computer is **NOT** in Extended Monitor mode, **but** in **Clone, Identical or Mirror Monitor** mode.
(Windows OS :right click on the desktop, go to settings. Mac OS: go to the Apple menu under System Preferences, click on Displays.)
- To hear **Audio** from the computer or any media device, turn up the volume on the computer and the Wall Controller.

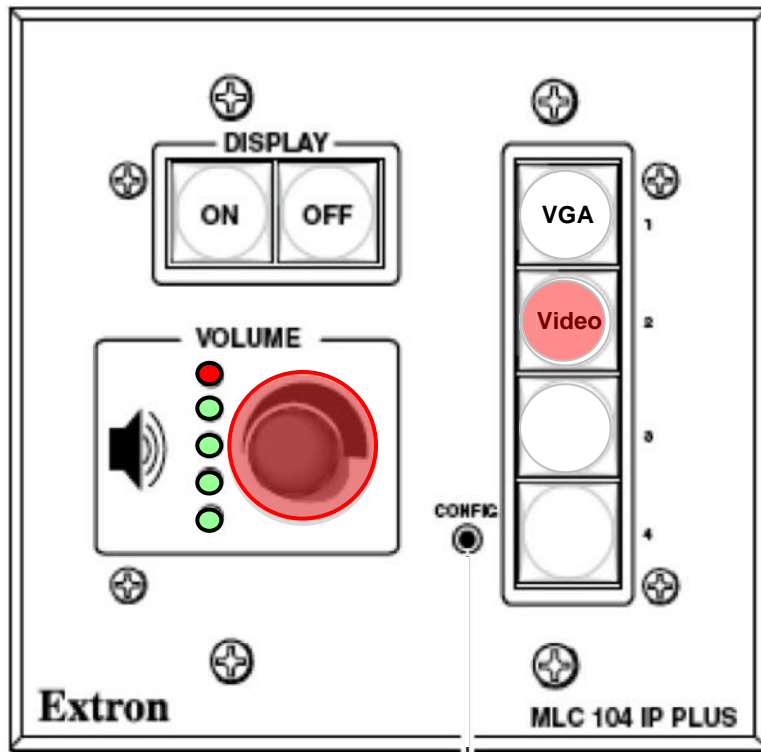
External Devices

- To project a DVD, VHS, or any external device, plug the device into the Floor Box AV **Video and Audio In** jacks.



Floor Box

- Press the **Video** button on the Wall Controller.
- Adjust the **Volume** using the Wall Controller.



Wall Controller

Please press the Off button on the Wall Panel when finished. Thank you.