

MEMORANDUM

March 8, 2019

TO: Board Members

FROM: Grenita Lathan, Ph.D.
Interim Superintendent of Schools

SUBJECT: **PSAT 8/9 & PSAT/NMSQT FALL 2018**

CONTACT: Carla Stevens, 713-556-6700

This report analyzes the participation and performance of Houston Independent School District (HISD) students who took the fall 2018 administration of the Preliminary SAT for students in grades eight and nine (PSAT 8/9) and the Preliminary SAT/National Merit Scholarship Qualifying Test (PSAT/NMSQT) assessments offered by the College Board.

Key findings include:

- HISD participation rates on both PSAT 8/9 and PSAT/NMSQT remained the same or increased from 2015 to 2018.
- In 2018, 85 percent of HISD eighth grade students and 82 percent of ninth grade students took the PSAT 8/9.
- In 2018, 82 percent of tenth grade students and 81 percent of eleventh grade students took the PSAT/NMSQT.
- Mean math scores were higher than Evidence-Based Reading and Writing (ERW) scores on the PSAT 8/9 for both grade levels.
- Mean ERW scores were higher than math scores on the PSAT/NMSQT for tenth and eleventh grade students.
- The percentage of students meeting College and Career Readiness (CCR) Benchmarks increased compared to last year for ninth and tenth grade, as well as eleventh grade students meeting the ERW CCR benchmarks.

Administrative Responses

Innovation & Postsecondary Programming

The district's participation rates on the PSAT 8/9 and the PSAT/NMSQT for 2018 averaged 83% and 82%, respectively. These participation rates are significantly higher than both the state and nation.

In the 2018-2019 school year, the Innovation & Postsecondary Programming and College Readiness departments continued to prioritize initiatives that increase both awareness of and preparation for these exams, including:

- The district pays for students to take the PSAT in grades 8 through 11, which allows students and schools to use scores over time to prepare for the PSAT/National Merit Scholarship Qualifying Test in the 11th grade. The district also pays for all juniors to take the SAT during the school day, and the department works directly with schools to coordinate high participation.
- The district used data to identify a trend between high usage of Khan Academy and score increases on the PSAT. The district trained a number of these successful students to be "Khan Ambassadors," sharing their success stories in a districtwide print campaign, regularly

promoting awareness of the benefits of strong PSAT performance on high school campuses. 2018 marks the third year of the ambassador program, which was expanded to include more students.

- For the second year, all high school and 6-12 campuses were given an opportunity to participate in a contest, called the “Khanathlon,” to increase the number of students grades 9-11 that use Khan Academy to prepare for the PSAT and SAT. Early in the Spring semester, three campuses were recognized for highest linkage rates between CollegeBoard and Khan Academy accounts, followed by a mid-term and end of year contest for highest usage. Campuses with the highest rates of usage are eligible for district funding for college field trips, materials and other college and career readiness initiatives. Large, medium, and small campuses competed separately.
 - Students grades 9-12 spent over 1,000,000 minutes using Official SAT Practice at Khan Academy in 2017-2018, up from 800,000 minutes in 2016-2017, to prepare for PSAT and SAT exams.
- The district provides students, parents and campuses with access to Naviance, which provides free standardized testing preparation for the PSAT and SAT. This tool is also used to send messages to students about upcoming testing dates, and resources to understand and prepare for the exam.
- The College Readiness Department centrally trains and supports a team of College & Career Readiness Advisors who work directly with students at all high schools. This team provides hands-on support for completing college, financial aid, and scholarship applications. The PSAT plays a pivotal role in these applications, expanding access and opportunity for college admissibility and scholarship dollars. All College Access personnel in the district are provided with training on how to leverage PSAT and SAT Preparation tools. In addition, high school staff are trained to implement Official SAT Practice at Khan Academy both during and outside of the school day.
- HISD Innovation & Postsecondary Programming is collaborating with the Athletics Department to practice both on and off the field, requiring student athletes to use Official SAT Practice at Khan Academy before athletic practice.

Secondary Curriculum Office

The Secondary Curriculum and Development team works to ensure that curriculum, resources, and professional learning prepare students to learn at higher levels to be college ready. Resources such as Imagine Math, Vocabulary.com, and Achieve 3000 provide students with additional opportunities to build vocabulary, work on SAT practice pathways, and develop high levels of literacy in addition to the instruction they receive in their core classes. In partnership with the College Readiness team, the department continues to help high school teachers understand SAT requirements and formatting. Additionally, SAT-type math problems can be found in portions of the district curriculum to support teachers as they work with secondary students.

Should you have any further questions, please contact Carla Stevens in Research and Accountability at 713-556-6700.

 GL

Attachment

cc: Superintendent's Direct Reports
Area Superintendents
School Support Officers
High School Principals
Middle School Principals
Annie Wolfe
Jharrett Bryantt



RESEARCH

Educational Program Report

PSAT 8/9 & PSAT/NMSQT FALL 2018



2019 BOARD OF EDUCATION

Diana Dávila
President

Holly Maria Flynn Vilaseca
First Vice President

Elizabeth Santos
Second Vice President

Sergio Lira
Secretary

Susan Deigaard
Assistant Secretary

Wanda Adams
Jolanda Jones
Rhonda Skillern-Jones
Anne Sung

Grenita Lathan, Ph.D.
Interim Superintendent of Schools

Carla Stevens
Assistant Superintendent
Department of Research and Accountability

Laurie Zimmerman, Ph.D.
Sr. Research Specialist

Zack Bigner, Ed.D.
Research Manager

Houston Independent School District
Hattie Mae White Educational Support Center
4400 West 18th Street Houston, Texas 77092-8501

www.HoustonISD.org

It is the policy of the Houston Independent School District not to discriminate on the basis of age, color, handicap or disability, ancestry, national origin, marital status, race, religion, sex, veteran status, political affiliation, sexual orientation, gender identity and/or gender expression in its educational or employment programs and activities.

PSAT 8/9 and PSAT/NMSQT Results: Fall 2018

Executive Summary

Program Description

The Preliminary SAT for students in grades eight and nine (PSAT 8/9) and the Preliminary SAT/National Merit Scholarship Qualifying Test (PSAT/NMSQT) are national examinations offered by the College Board. These assessments measure progress toward college and career readiness. In fall 2015, the College Board redesigned the PSAT/NMSQT and introduced the PSAT 8/9 for the first time. Because comparing the redesigned exam with prior versions is problematic, performance data are only included for a maximum of four years.

Highlights

- HISD participation rates on both PSAT 8/9 and PSAT/NMSQT remained the same or increased from 2015 to 2018.
- In 2018, PSAT 8/9 and PSAT/NMSQT total scaled scores increased for grades 9 and 10 at the district and state level but remained the same or declined for the total group (national and international testers) compared to 2017.
- Although average PSAT 8/9 and PSAT/NMSQT scores and scores by subject and grade level districtwide are lower than those of students in Texas and the total group (international and national testers), gaps in performance between the district and the total group narrowed in 2018 compared to 2015 for the mean total in grade 11 and the mean ERW scores in grades 10 and 11. Moreover, gaps in performance between the district and state narrowed in 2018 for mean ERW scores in grades 10 and 11.
- On the PSAT 8/9, the grade 9 mean total scores increased 14 scaled-score points from 2017 to 2018, exceeding the 10 scaled-score points by the state and no change by the total group.
- For the 2018 PSAT 8/9 and the PSAT/NMSQT total scores and scores by subject and grade level, HISD Asian and White students scored higher on average than Hispanic or African American students.
- Mean math scores were higher than Evidence-Based Reading and Writing (ERW) scores on the PSAT 8/9 for both grade levels.
- Mean ERW scores were higher than math scores on the PSAT/NMSQT for tenth and eleventh grade students.
- Increases were seen in the percent of students meeting both College and Career Readiness (CCR) benchmarks compared to last year for ninth and tenth grade, as well as eleventh grade students meeting the ERW CCR benchmarks.
- Twenty-seven percent and 30 percent of students in grades 8 and 9 met both CCR benchmarks, and 25 percent and 23 percent of students in grades 10 and 11 met both CCR benchmarks in 2018, respectively.

Introduction

The SAT Suite of Assessments is an integrated system of tests that includes the SAT® (for students in grades 11 and 12), the Preliminary SAT/National Merit Scholarship Qualifying Test (PSAT/NMSQT®) and the PSAT™ 10 (for grades 10 and 11), and the PSAT™ 8/9 (for grades 8 and 9). The tests measure the same skills and knowledge in grade-appropriate ways. The PSAT 8/9 establishes a baseline measurement of college and career readiness as students enter high school. The PSAT/NMSQT measures the skills and knowledge that research shows are the most essential for college and career readiness and success and can qualify eligible students for scholarships through partnership with the National Merit Scholarship Corporation.

There are two section scores, Evidence-Based Reading and Writing (ERW) and Math. The ERW Section Score is comprised of the Reading Test Score and the Writing and Language Test Score. The Math Section Score is comprised of the Math Test Score. The Reading Test measures comprehension and reasoning skills and focuses on close reading of passages in a wide array of subject areas. The Writing and Language Test measures a range of skills including command of evidence, expression of ideas, and the use of Standard English conventions in grammar and punctuation. The Math Test covers a range of math practices, with an emphasis on problem solving, modeling, using tools strategically, and using algebraic structure. Each section score of the PSAT 8/9 ranges from 120 to 720, with the total score ranging from 240 to 1440. For the PSAT/NMSQT, each section score ranges from 160 to 760, with the total score ranging from 320 to 1520.

The score report includes an indicator for each section, ERW and Mathematics, which shows whether a student's score meets the grade-level benchmark. These benchmarks allow students and educators to understand how students are progressing toward college readiness. This report analyzes the participation and performance of Houston Independent School District (HISD) students who took the fall 2018 administration of the PSAT 8/9 and the PSAT/NMSQT.

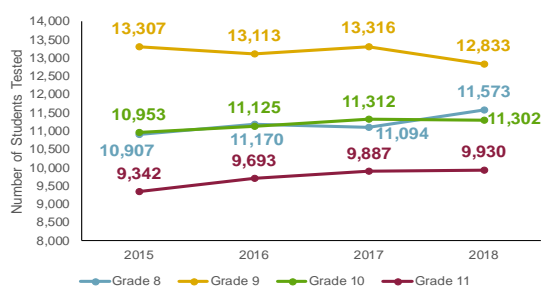
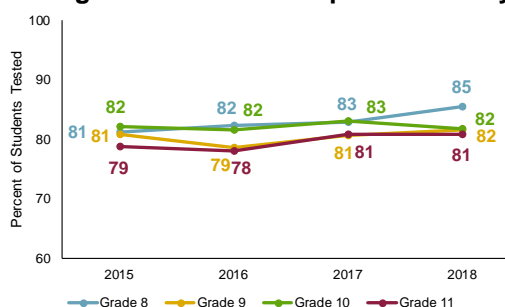
In 2015–2016, the College Board redesigned the PSAT/NMSQT and introduced the PSAT 8/9 for the first time. The goal of the redesign of the suite of assessments was to reflect what is taught in the classroom and assess skills that are the most accurate predictors of college and career readiness and success based on established research and evidence. Because comparing the redesigned exam with prior versions is problematic, performance data are only included for a maximum of four years. This report includes students' latest (i.e., most recent) test score, not necessarily their highest score. Comparisons are made to the state and "total group" which includes all national and international testers.

Results

PSAT 8/9 and PSAT/NMSQT Participation

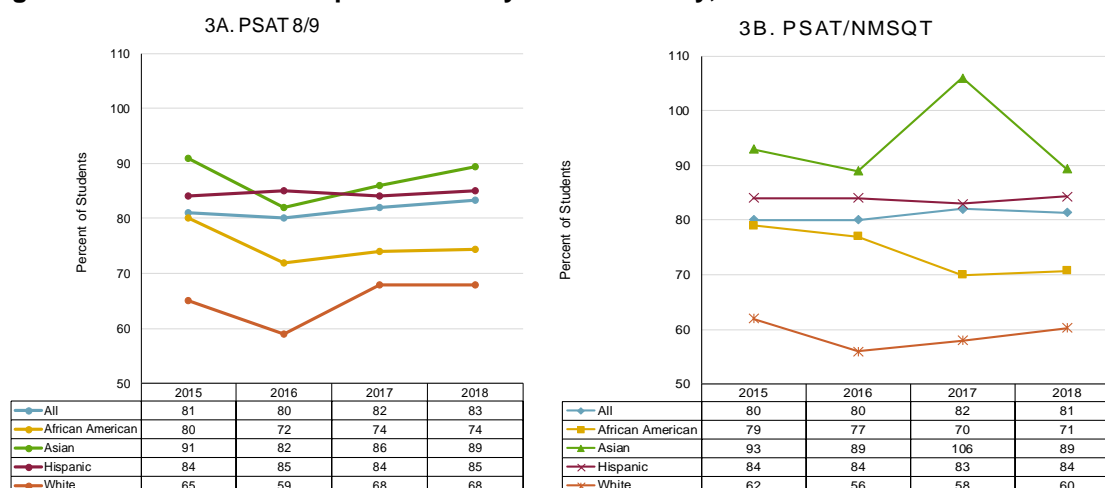
- HISD launched the PSAT for All initiative in 2003 to enroll more students in Advanced Placement courses and prepare them to be successful on the SAT which is required by most colleges. The district-wide initiative enables all HISD tenth graders to take the PSAT/NMSQT for free. On August 12, 2010, the HISD Board of Education expanded the PSAT for All program to include incoming ninth-graders for the 2010–2011 school year. Currently, the district pays for the students to take the PSAT in grades 8 through 10. **Figure 1** and **Figure 2** (p. 3) illustrate district-wide PSAT participation.

- The number of tenth grade students taking the PSAT/NMSQT increased from 10,953 in 2015 to 11,302 in 2018, although there was a decline in grade 10 compared to the previous year. For eleventh grade students, PSAT/NMSQT participation increased from 9,342 in 2015 to 9,930 in 2018 (Figure 1).
- The percentage of tenth grade students tested has remained the same from 2015 to 2018 at 82 percent, while the percentage of eleventh grade students tested has increased from 79 percent in 2015 to 81 percent in 2018 (Figure 2).
- The percentage of eighth and ninth grade students tested increased from 81 percent in 2015 to 85 percent in 2018, and from 81 percent in 2015 to 82 percent in 2018, respectively.

Figure 1. PSAT Participation by Grade**Figure 2. PSAT Participation Rate by Grade**

Sources: Figure 1, College Board Summary Report, August 2018–July 2019, 1/29/19; *HISD PSAT 8/9 & PSAT/NMSQT Fall 2017 Report*; Figure 2, Chancery Demographic Extract, 10/29/18; College Board Summary Report, August 2018–July 2019, 1/29/19

Figures 3A and 3B show the HISD PSAT participation rate by student group. Participation rates for each group were determined by dividing the number of students within the group who took the PSAT by the number of enrolled students within the group.

Figure 3A–3B. PSAT Participation Rate by Race/Ethnicity, 2015–2018

Sources: Fall 2018 College Board PSAT 8/9 Scores by Demographics-8th grade and 9th grade, 1/29/2019; Fall 2018 College Board PSAT/NMSQT Scores by Demographics-10th grade and 11th grade, 1/29/2019; Chancery Demographic Extract, 10/29/18; *HISD PSAT 8/9 & PSAT/NMSQT Fall 2017 Report*

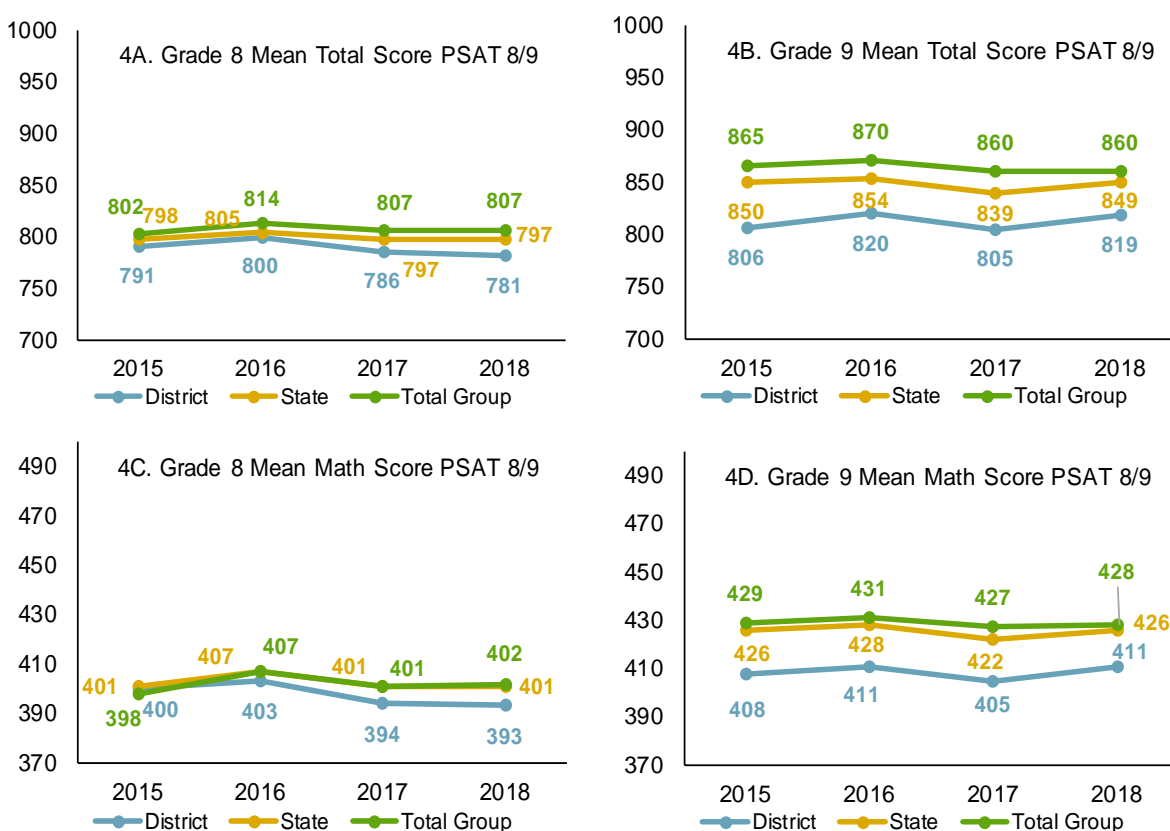
Note: Because demographic data are self-reported, percentages may exceed 100 percent.

- For the PSAT 8/9, the participation rate **dropped** from 2015 to 2016 for all race/ethnicity groups shown except for the Hispanic group which **increased**, while participation for all students, African American, Hispanic, Asian, and White students increased or remained the same from 2016 to 2018.
- For the PSAT/NMSQT, the participation rate **increased** from 2015 to 2017 for all students and Asian students, while participation for all students and Asian students **decreased** from 2017 to 2018, but **increased** for African American, Hispanic, and White students.

PSAT Performance

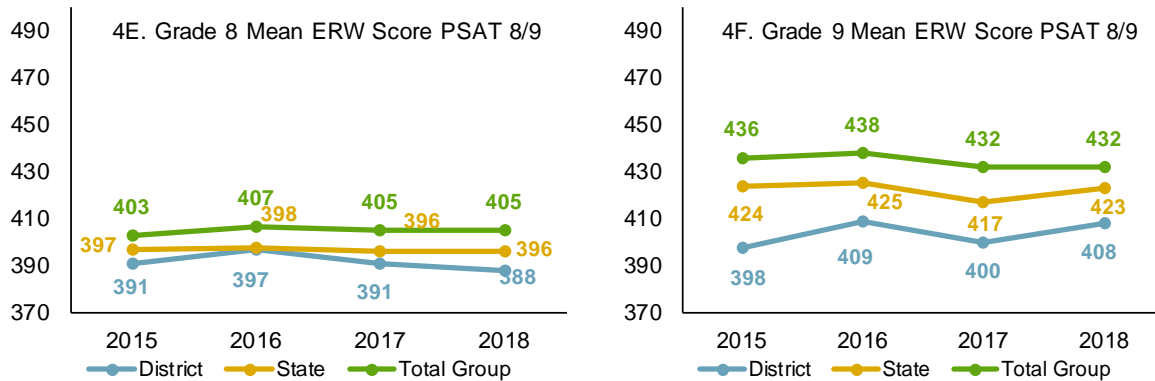
Figures 4A–4F show the average score by subject, grade level, and PSAT total score for 2015 to 2018 on the PSAT 8/9 comparing district, state, and total group (national and international) results.

Figures 4A–4D. Mean PSAT 8/9 Scores of District, State, and Total Group Students, 2015–2018



Sources: PSAT 8/9 2018 Fall Scores by Institution, 8th grade and 9th grade; *HISD PSAT 8/9 & PSAT/NMSQT Fall 2017 Report*

Note: ERW=Evidence-based reading and writing; Total group includes international test takers.

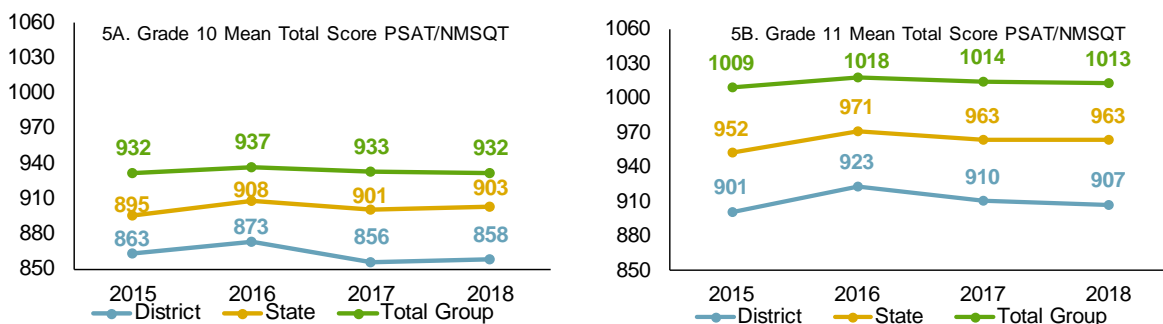
Figures 4E–4F. Mean PSAT 8/9 Scores of District, State, and Total Group Students, 2015–2018

Sources: PSAT 8/9 2018 Fall Scores by Institution, 8th grade and 9th grade; *HISD PSAT 8/9 & PSAT/NMSQT Fall 2017 Report*

Note: ERW=Evidence-based reading and writing; Total group includes International test takers.

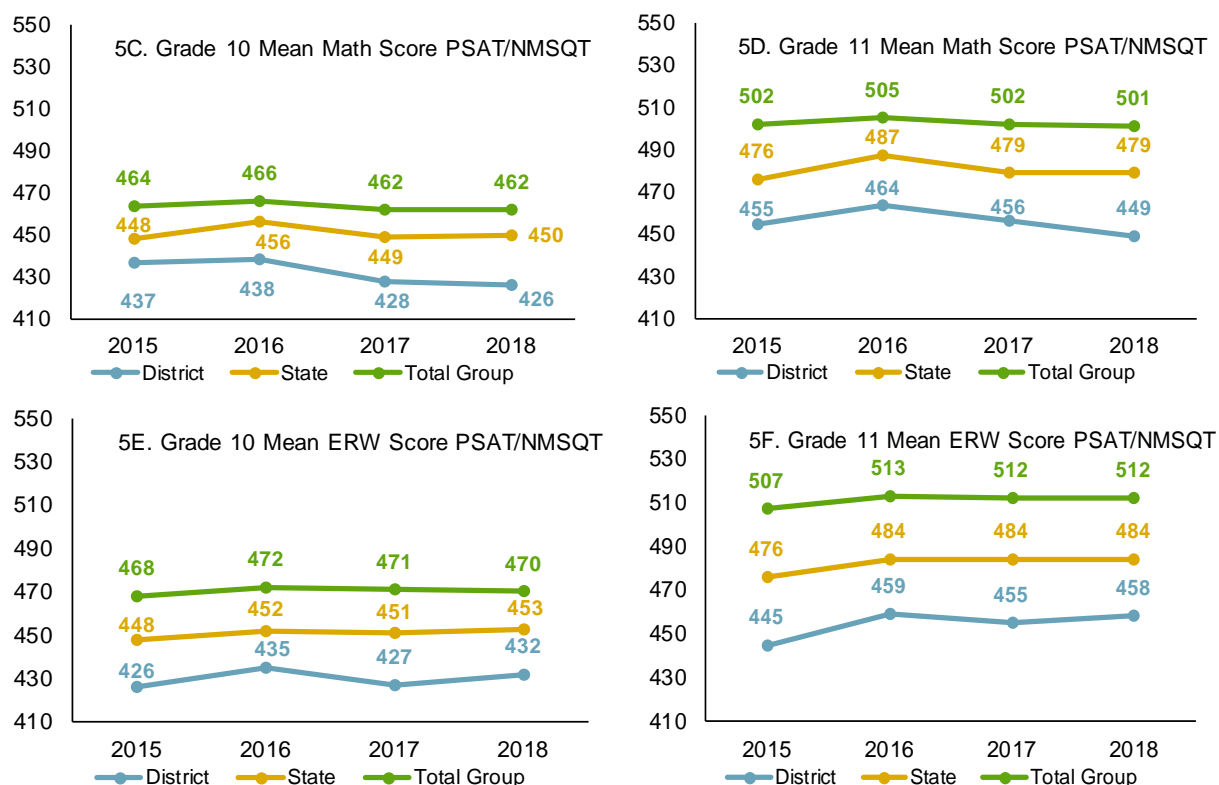
- In 2018, PSAT 8/9 mean total scores and scores by subject and grade level districtwide are lower than those of students for the state and the total group (Figures 4A–4D, p. 4 and 4E–4F).
- On the PSAT 8/9, the grade 9 mean total scores increased 14 scaled-score points from 2017 to 2018, exceeding the 10 scaled-score points by the state and no change by the total group, thus narrowing the gap between district and state/total group performance (Figure 4B, p. 4).
- On the PSAT 8/9, grade 9 showed increases of 6 scaled-score points on math and 8 scaled-score points on ERW from 2017 to 2018 which exceeded those from the state (4 scaled-score points and 6 scaled-score points) and the total group (1 scaled-score point and no change) (Figures 4B and 4D, p. 4 and 4F).

Figures 5A–5F show the average score by subject, grade level, and PSAT/NMSQT total score for 2015 to 2018 comparing district, state, and total group results.

Figures 5A–5B. Mean PSAT/NMSQT Scores of District, State, and Total Group Students, 2015–2018

Sources: PSAT/NMSQT 2018 Fall Scores by Institution, 10th and 11th grade; *PSAT 8/9 & PSAT/NMSQT Reports, Fall 2017 Report*

Note: ERW=Evidence-based reading and writing; Total group includes International test takers.

Figures 5C–5F. Mean PSAT/NMSQT Scores of District, State, and Total Group Students, 2015–2018

Sources: PSAT/NMSQT 2018 Fall Scores by Institution, 10th and 11th grade; *PSAT 8/9 & PSAT/NMSQT Reports, Fall 2017 Report*

Note: ERW=Evidence-based reading and writing; Total group includes International test takers.

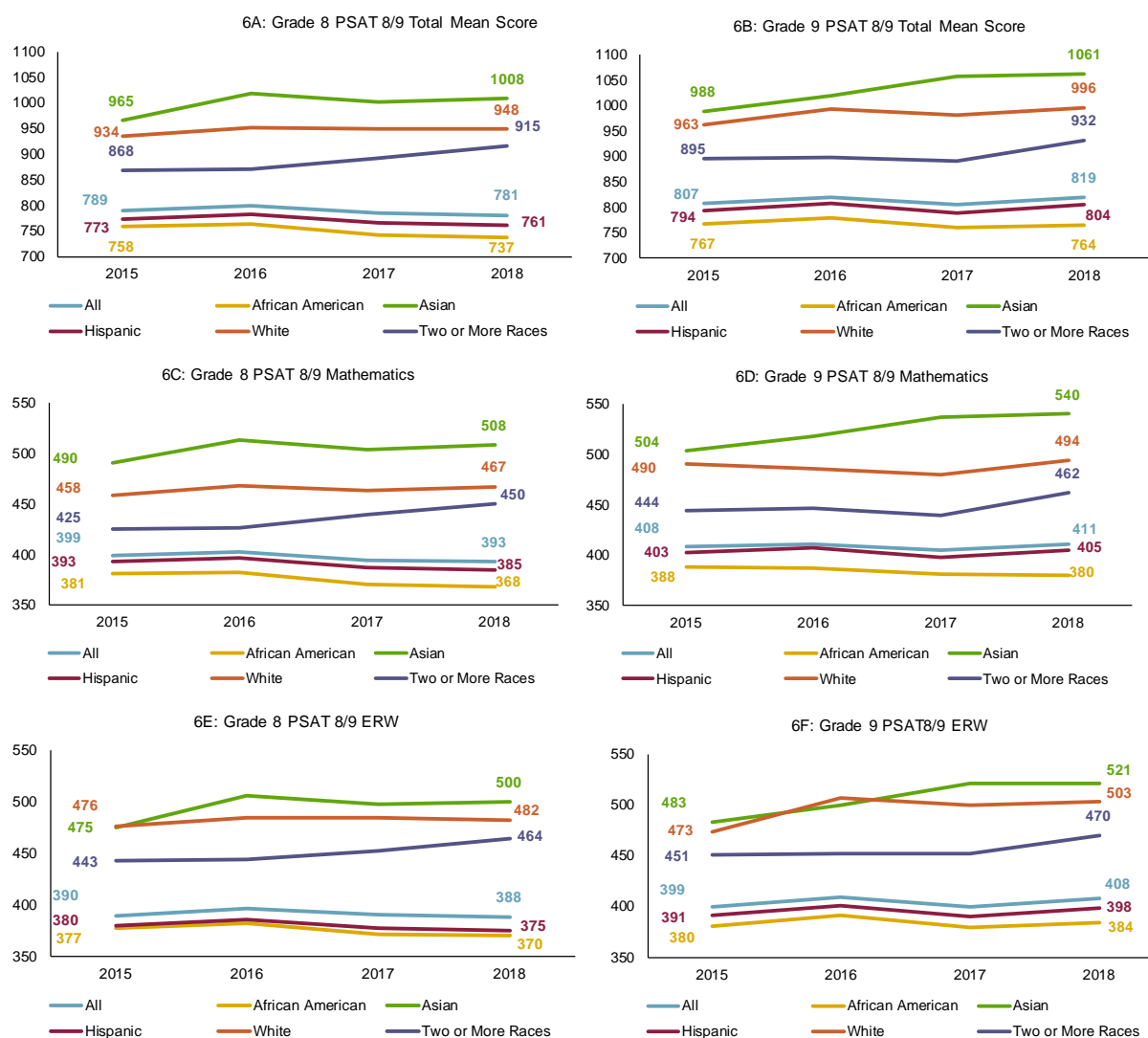
- PSAT/NMSQT mean total scores and scores by subject and grade level districtwide are lower than those of students from the state and total group (Figures 5A–5F, pp. 5–6).
- In 2018, PSAT/NMSQT mean total scores and mean ERW scores for grade 10 increased for both the district and the state, and mean ERW scores for grade 11 increased for the district, while state and total group scores remained the same compared to 2017 (Figures 5A–5F, pp. 5–6).
- Gaps in performance between the district and the total group narrowed in 2018 compared to 2015 for the mean total in grade 11 and the mean ERW scores in grades 10 and 11. Moreover, gaps in performance between the district and state narrowed in 2018 for mean ERW scores in grades 10 and 11 (Figures 5A–5F, pp. 5–6).

Figures 6A–6F show the average PSAT 8/9 scores by subject, grade level, and student group for the district from 2015 to 2018.

- For eighth and ninth grade students tested on the PSAT 8/9, Asian and White students scored higher on average in both ERW and math and on the mean total score compared to African American and Hispanic students from 2015 to 2018 (Figure 6A–6F, p. 7).

- From 2015 to 2018, total mean scores and subject scores increased for eighth grade students identified as Asian, White, or Two or More Races (Figures 6A, 6C, and 6E).
- For ninth grade students, total mean scores and subject scores increased for all students and for students identified as Asian, Hispanic, White, or Two or More Races, respectively, and ERW mean scores increased for African American students from 2015 to 2018 (Figures 6B, 6D, and 6F).

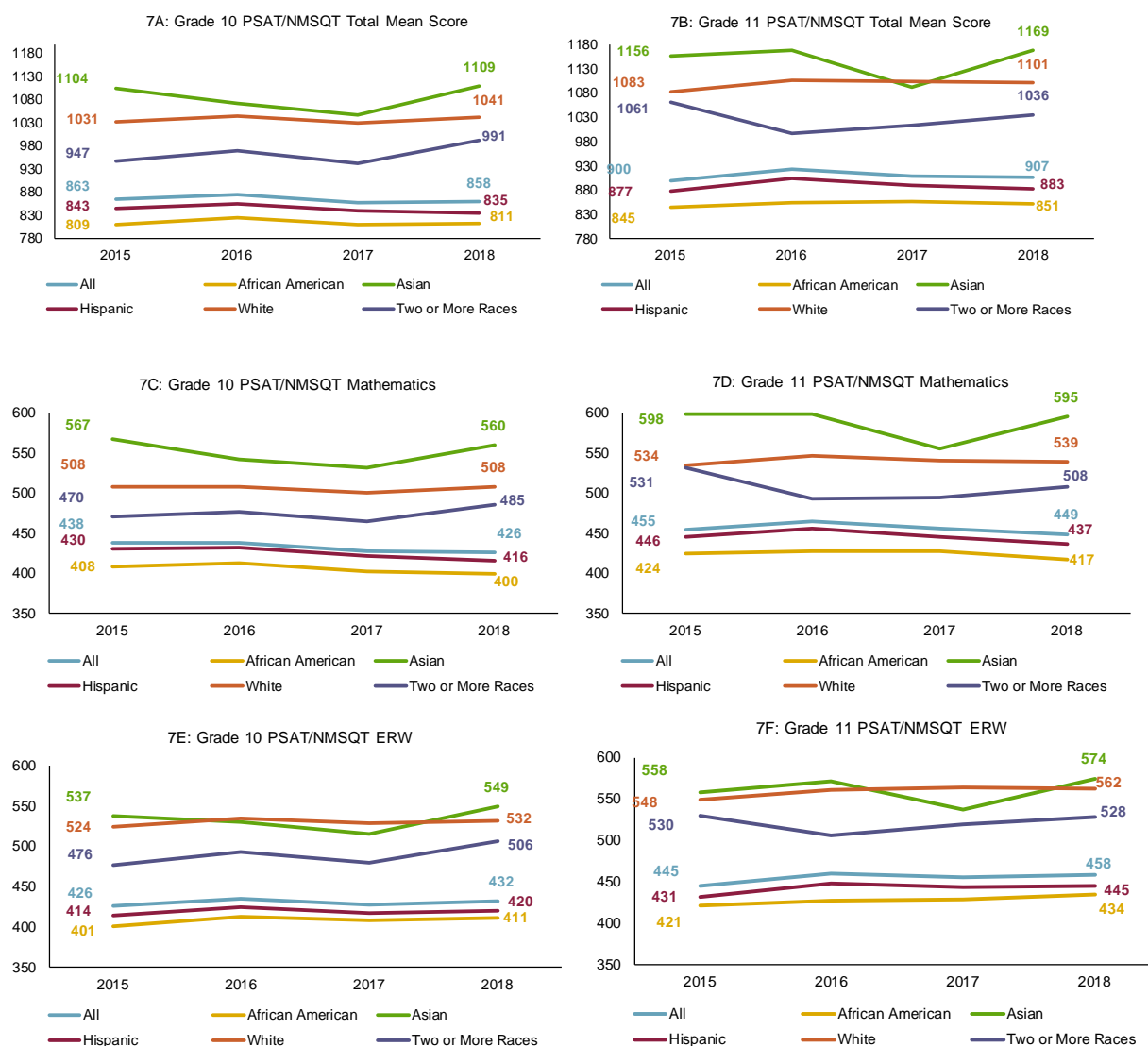
Figures 6A–6F. Average PSAT 8/9 Scores by Subject, Grade, and Race/Ethnicity, 2015–2018



Sources: PSAT 8/9 2018 Fall Scores by Demographics, 8th grade, filtered by Race/Ethnicity, 1/29/2019; PSAT 8/9 2018 Fall Scores by Demographics, 9th grade, filtered by Race/Ethnicity, 1/29/2019; *PSAT 8/9 & PSAT/NMSQT Reports, Fall 2017 Report*

Note: ERW=Evidence-based reading and writing; Section scores may not add up to total score due to rounding.

Figures 7A–7F show the average PSAT/NMSQT scores by subject, grade level, and student group for the district from 2015 to 2018.

Figures 7A–7F. Average PSAT/NMSQT Scores by Subject, Grade, and Race/Ethnicity, 2015–2018

Sources: PSAT/NMSQT 2018 Fall Scores by Demographics, 10th grade, filtered by Race/Ethnicity, 1/29/2019;
 PSAT/NMSQT 2018 Fall Scores by Demographics, 11th grade, filtered by Race/Ethnicity, 1/29/2019; *PSAT
 8/9 & PSAT/NMSQT Reports, Fall 2017 Report*

Note: ERW=Evidence-based reading and writing

- For tenth and eleventh grade students tested on the PSAT/NMSQT, Asian and White students scored higher on average in both ERW and math and on the total mean score compared to African American and Hispanic students from 2015 to 2018 (Figure 7A–7F).
- From 2015 to 2018, total mean scores increased for tenth grade students identified as African American, Asian, White, or Two or More Races; ERW scores increased for all tenth grade students as well as all racial/ethnic groups, and math scores increased for tenth grade students identified as Two or More Races (Figures 7A, 7C, and 7E).

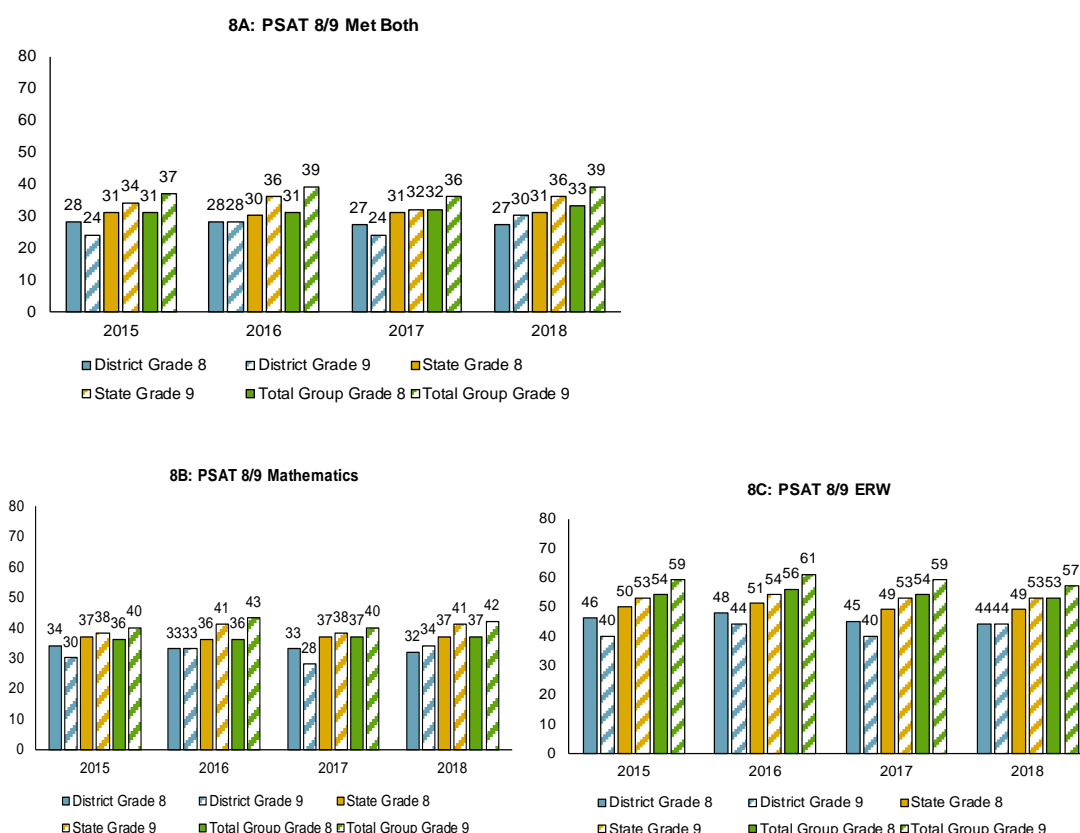
- From 2015 to 2018, total mean scores increased for all eleventh-grade students and all racial/ethnic groups, except Two or More Races; math scores increased for students identified as White; and ERW scores increased for all eleventh-grade students and students identified as African American, Asian, Hispanic, or White (Figures 7B, 7D, and 7F, p. 8).

PSAT College and Career Readiness (CCR) Benchmarks

The College Board sets benchmark scores to predict students' chance of success in college and career readiness. According to the College Board, the SAT Math benchmark is associated with a 75 percent chance of earning at least a C in first-semester, college-level courses in algebra, statistics, precalculus, or calculus. The SAT ERW benchmark is associated with a 75 percent chance of earning at least a C in first-semester, college-level courses in history, literature, social science, or writing. Score reports for the PSAT/NMSQT and PSAT 8/9 include grade-level benchmarks based on how students grow from year to year toward the SAT benchmarks.

Figures 8A–8F show the percentage of students from the district, state, and total group who met college and career readiness (CCR) benchmarks in ERW, math, and both on the PSAT 8/9 and the PSAT/NMSQT.

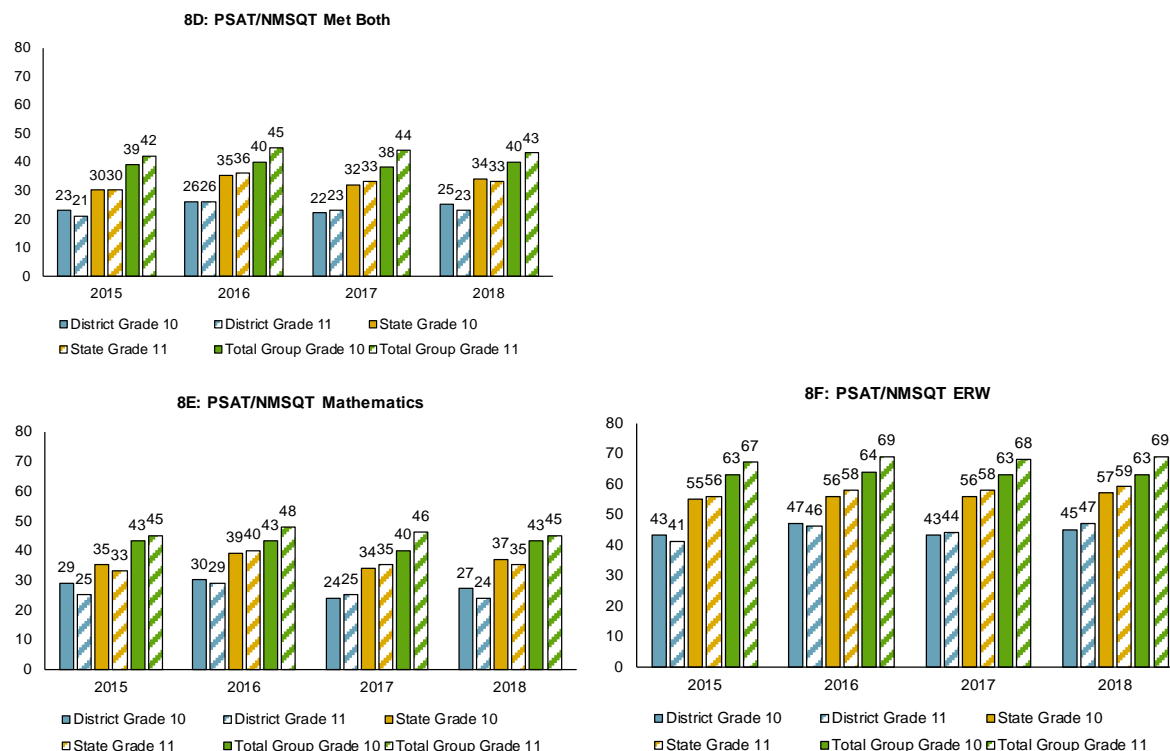
Figures 8A–8C. Percentage of District, State, and Total Group Students Meeting CCR Benchmarks, 2015–2018



Sources: PSAT 8/9 2018 Fall Scores by Institution, 8th grade, 1/29/2019; PSAT 8/9; 2018 Fall Scores by Institution, 9th grade; PSAT 8/9, 1/29/2019; *PSAT 8/9 & PSAT/NMSQT Reports, Fall 2017 Report*

Note: ERW=Evidence-based reading and writing; Total group includes international test takers.

Figures 8D–8F. Percentage of District, State, and Total Group Students Meeting CCR Benchmarks, 2015–2018



PSAT/NMSQT 2018 Fall Scores by Institution, 10th grade, 1/29/2019; PSAT/NMSQT 2018 Fall Scores by Institution, 11th grade, 1/29/2019; *PSAT 8/9 & PSAT/NMSQT Reports, Fall 2017 Report*

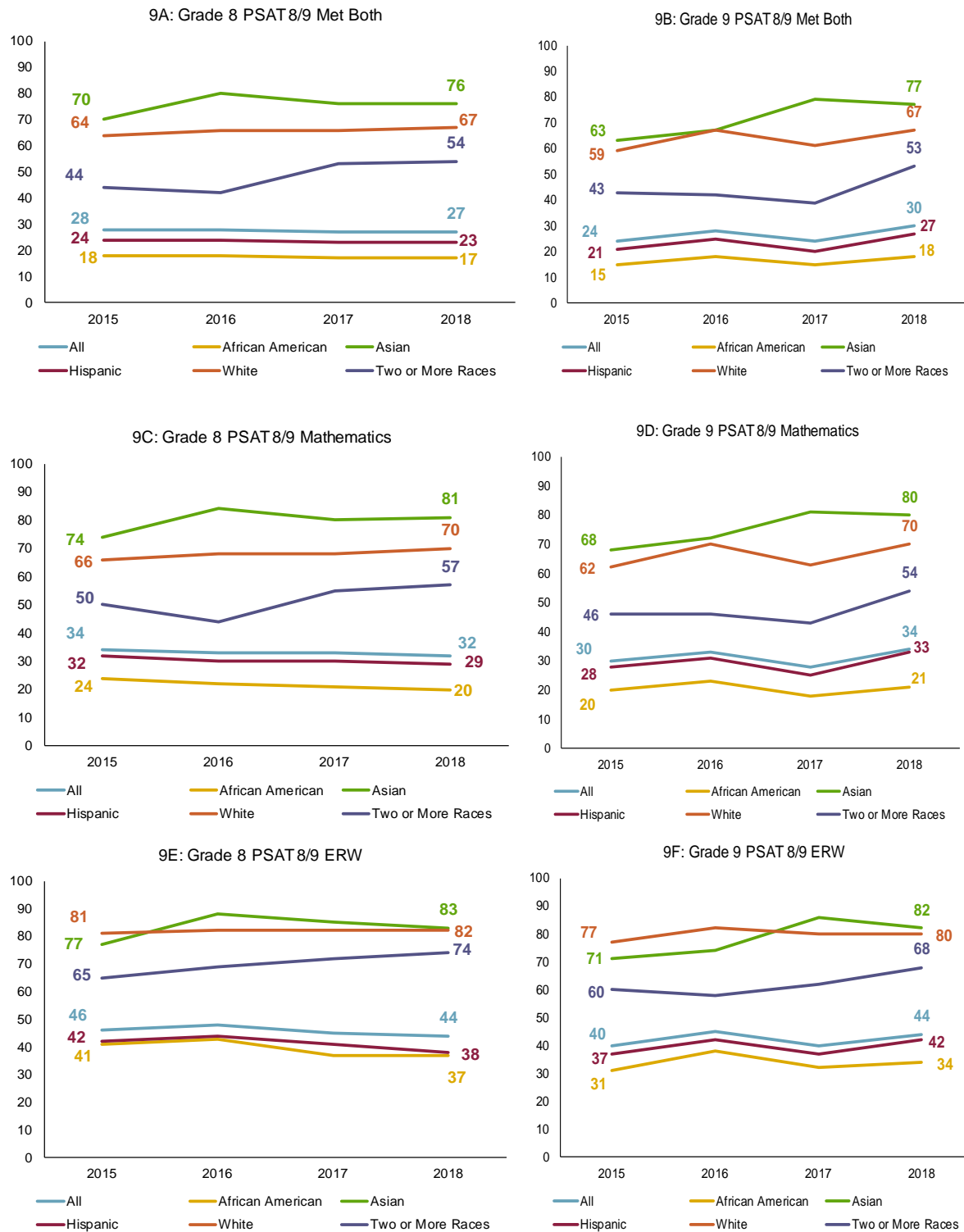
Note: ERW=Evidence-based reading and writing; Total group includes international test takers.

- A higher percentage of HISD eighth grade students taking the PSAT 8/9 met the CCR benchmark in ERW (44 percent) compared to math (32 percent) in 2018. A similar trend is evident for grades 9–11 and for both the state and total group (Figures 8B, 8C, p. 9; 8E and 8F).
- Although a lower percentage of HISD students met both CCR Benchmarks on the PSAT 8/9 and the PSAT/NMSQT by grade level compared to Texas and the total group from 2015 to 2018, district ninth grade students narrowed the gap between the district and the state and the total group; moreover, the gap narrowed between district tenth and eleventh grade students and the total group (Figures 8A, p.9 and 8D).

Figures 9A–9F show the percentage of eighth and ninth grade students who met the CCR benchmarks on the PSAT 8/9 by subject and student group from 2015 to 2018.

- HISD eighth and ninth grade students belonging to the Asian or White groups had a higher percentage of students meeting the CCR benchmarks in both ERW and math compared to the African American, Hispanic, or Two or More Races groups (Figures 9C–9D and 9E–9F, p. 11).
- The percentage of eighth grade students meeting all CCR benchmarks in 2018 increased compared to 2015 for students belonging to the Asian, White, or Two or More Races groups. For ninth grade, the percentage meeting all CCR benchmarks increased for all racial/ethnic groups (Figures 9A–9F, p. 11).

Figures 9A–9F. Percentage of 8th and 9th Grade Students Meeting CCR Benchmarks on PSAT 8/9 by Student Group, 2015–2018

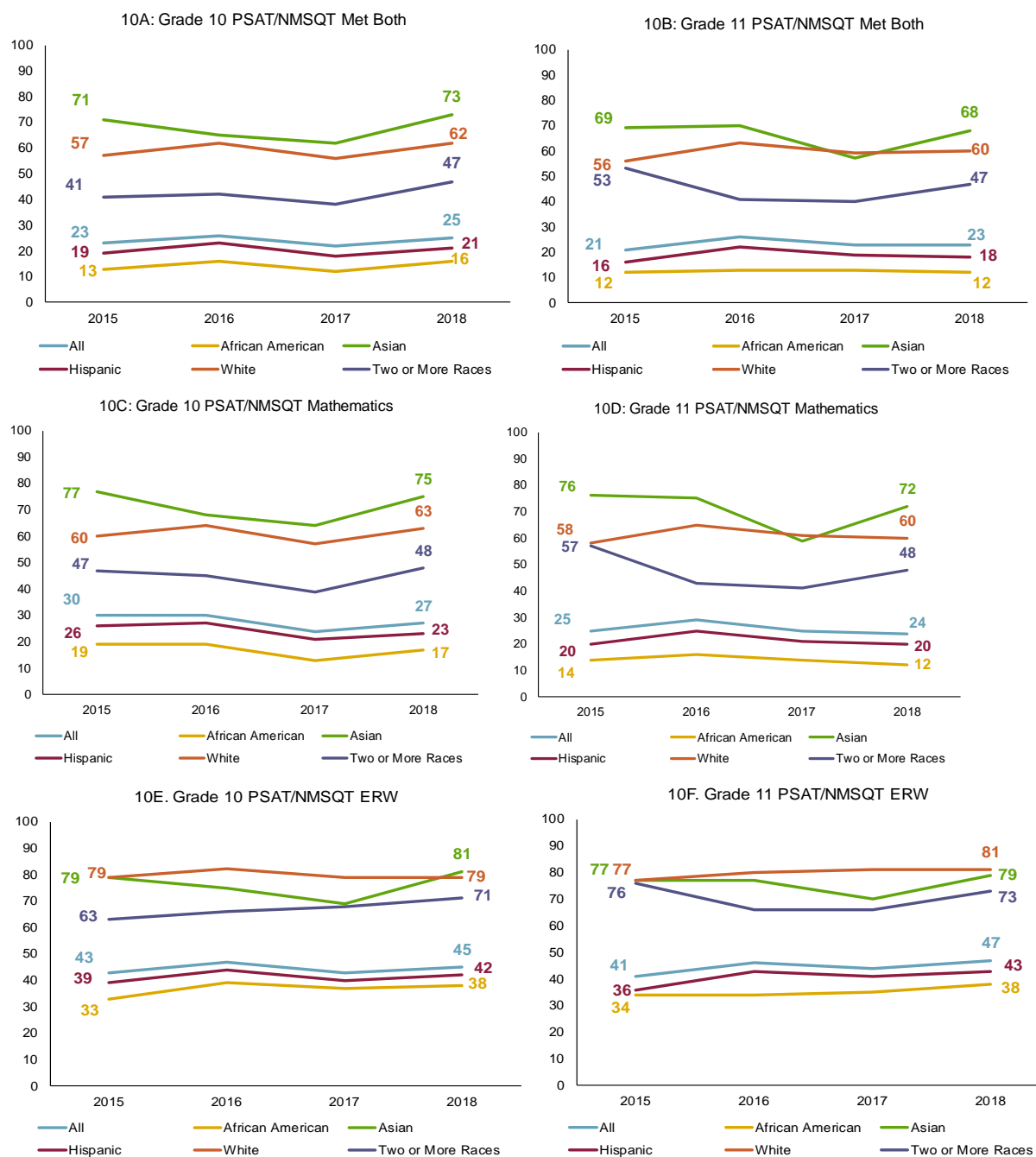


Sources: PSAT 8/9 2018 Fall Benchmarks by Demographics, 8th grade, 1/29/2019; PSAT 8/9 2018 Fall Benchmarks by Demographics, 9th grade, 1/29/2019; PSAT 8/9 & PSAT/NMSQT Reports, Fall 2017 Report

Note: ERW=Evidence-based reading and writing

Figures 10A–10F show the percentage of tenth and eleventh grade students who met the CCR benchmarks on the PSAT/NMSQT by subject and student group from 2015 to 2018.

Figure 10A–10F. Percentage of 10th and 11th Grade Students Meeting CCR Benchmarks on PSAT/NMSQT by Student Group, 2015–2018



Sources: PSAT/NMSQT 2018 Fall Benchmarks by Demographics, 10th grade; PSAT/NMSQT 2018 Fall Benchmarks by Demographics, 11th grade; *PSAT 8/9 & PSAT/NMSQT Reports, Fall 2017 Report*

Note: ERW=Evidence-based reading and writing

- HISD tenth and eleventh grade students belonging to the Asian or White groups had a higher percentage of students meeting the CCR benchmarks in both ERW and math compared to the African American, Hispanic, or Two or More Races groups (Figures 10C–10F, p. 12).
- HISD tenth grade students belonging to the Asian, African American, Hispanic, or Two or More Races groups had a higher percentage of students meeting the ERW benchmarks in 2018 compared to 2015 (Figure 10E, p. 12).
- The percentage of eleventh grade students belonging to the African American, Asian, Hispanic, or White groups meeting ERW benchmarks in 2018 increased compared to 2015, and the percentage of eleventh grade students belonging to the Hispanic, White, or All Students groups meeting both CCR benchmarks in 2018 increased compared to 2015 (Figures 10B, 10D, and 10F, p. 12).

PSAT Participation and Performance by Campus

Table 1A (p. 14) shows the number of eighth grade students tested, average PSAT 8/9 total score, and percentage of students meeting both the ERW and math CCR benchmarks by campus.

- The Rusk School and Hogg Middle School had the greatest increases in the number of eighth grade students taking the PSAT, with increases of 76 and 70 students, respectively. Campuses were required to test each year to be included in this analysis.
- T.H. Rogers School had the highest average total score at 1090 as well as the highest percentage of eighth grade students who met both the ERW and math CCR benchmarks at 95.9 percent.
- Wharton Dual Language had the greatest increases in total score and percentage of students meeting both CCR benchmarks at 110 points and 39.0 percentage points, respectively.

Table 1A. PSAT 8/9 Grade 8 Mean Total Scores and Percent Met CCR Benchmarks by Campus, 2017 and 2018
(Sorted by 2018 Mean Total Score)

Campus	Number Tested				Mean Test Score				% Met Both CCR Benchmarks			
	2017	2018	Change		2017	2018	Change		2017	2018	Change	
Rogers, T.H.	147	147		0	1082	1090		8	96.6	95.9		-0.7
Mandarin Immersion	0	15			--	1019		--	--	93.3		
Lanier MS	476	461		-15	961	994		33	72.3	77.4		5.1
Pin Oak MS	392	395		3	992	966		-26	77.3	69.9		-7.4
Briarwood	45	42		-3	936	955		19	73.3	83.3		10.0
Wharton Dual Lang.	24	22		-2	818	928		110	29.2	68.2		39.0
Wilson Mont.	26	35		9	915	893		-22	53.8	37.1		-16.7
Chrysalis MS	83	86		3	891	892		1	57.8	59.3		1.5
Baylor College MS	203	227		24	882	875		-7	48.3	46.7		-1.6
YWCPA	130	80		-50	828	872		44	29.2	35.0		5.8
E-STEM West MS	58	59		1	784	870		86	25.9	50.8		24.9
Pershing MS	538	558		20	843	859		16	37.2	40.7		3.5
Sharps town Intl	171	151		-20	788	845		57	25.7	43.0		17.3
West Briar MS	341	356		15	845	839		-6	40.5	37.1		-3.4
Hogg MS	227	297		70	795	833		38	26.9	37.0		10.1
Black MS	308	345		37	833	831		-2	39.0	38.3		-0.7
Rice School	156	151		-5	837	824		-13	44.9	39.7		-5.2
Hamilton MS	440	406		-34	816	815		-1	34.3	36.9		2.6
Tanglewood MS	240	254		14	791	814		23	25.4	33.9		8.5
Stevenson MS	410	444		34	805	813		8	35.1	39.0		3.9
Leland YMCPA	88	93		5	789	809		20	21.6	30.1		8.5
Meyerland MS	523	496		-27	830	807		-23	38.4	30.8		-7.6
Burbank MS	447	440		-7	800	793		-7	33.3	30.2		-3.1
Rusk School	52	128		76	810	787		-23	32.7	23.4		-9.3
Pilgrim Acad.	96	91		-5	751	766		15	14.6	27.5		12.9
Hartman MS	401	398		-3	757	742		-15	20.9	17.8		-3.1
Energized MS	118	127		9	757	739		-18	16.1	13.4		-2.7
Clifton MS	225	215		-10	748	738		-10	13.8	16.3		2.5
Reagan Ed Ctr	90	118		28	723	737		14	8.9	16.1		7.2
Revere MS	379	361		-18	741	736		-5	17.4	17.7		0.3
Marshall MS	267	262		-5	733	729		-4	13.1	14.5		1.4
Fondren MS	278	286		8	759	725		-34	20.1	11.2		-8.9
Fleming MS	140	147		7	730	722		-8	7.1	15.0		7.9
McReynolds MS	172	162		-10	749	717		-32	18.6	11.1		-7.5
Deady MS	203	203		0	707	711		4	8.9	12.3		3.4
Ortiz MS	309	305		-4	721	710		-11	12.6	12.5		-0.1
Navarro MS	200	224		24	689	706		17	7.0	12.5		5.5
Holland MS	172	192		20	693	702		9	5.8	12.0		6.2
Henry MS	249	268		19	703	698		-5	7.2	7.1		-0.1
Long Acad	0	228		--	--	695		--	--	10.1		
Key MS	154	184		30	684	691		7	2.6	8.7		6.1
Lawson MS	303	324		21	692	688		-4	6.3	8.0		1.7
E-STEM Central MS	99	99		0	685	688		3	3.0	8.1		5.1
Edison MS	196	206		10	704	687		-17	10.7	6.3		-4.4
Fonville MS	276	291		15	722	687		-35	10.5	4.5		-6.0
Cullen MS	132	112		-20	712	685		-27	7.6	6.3		-1.3
Gregory-Lincoln PK-8	82	78		-4	694	684		-10	6.1	5.1		-1.0
Thomas MS	152	152		0	663	675		12	2.0	3.9		1.9
Inspired Acad	73	76		3	666	671		5	0.0	2.6		2.6
Williams MS	128	163		35	680	669		-11	3.1	1.8		-1.3
Attucks MS	154	155		1	688	668		-20	7.8	7.1		-0.7
Welch MS	200	228		28	678	664		-14	5.0	5.3		0.3
Sugar Grove MS	228	222		-6	689	654		-35	5.7	2.3		-3.4
Milby HS	0	1			--	*		--	*	*		*
Victory Prep North	46	0			695	--			6.5	--		
Young Scholars	10	7		-3	691	*	*	*	0.0	*	*	*
Garden Oaks	37	0			868	--			40.5	--		

Sources: PSAT 8/9 2018 Fall Scores by Institution, 8th grade, 1/29/2019; PSAT 8/9 & PSAT/NMSQT Reports, Fall 2017 Report

"--" indicates no students tested, no students met the benchmark

* The College Board masks data for fewer than 10 test-takers.

Table 1B (p. 16) shows the number of ninth grade students tested, average PSAT 8/9 total score, and percentage of students meeting both the ERW and math CCR benchmarks by campus.

- Carnegie and Madison high schools had the greatest increases in the number of ninth grade students taking the PSAT 8/9, with increases of 151 and 118 students, respectively.
- Carnegie High School had the highest average total score at 1142 as well as the highest percentage of students who met both the ERW and math CCR benchmarks at 97.3 percent.
- Young Women's College Prep Academy (YWCPA) and Sharpstown International high schools had the greatest increases in the percentage of students meeting both CCR benchmarks with increases of 19.6 percentage points and 17.2 percentage points, respectively.

Table 1C (p. 17) shows the number of tenth grade students tested, average PSAT/NMSQT total score, and percentage of students meeting both the ERW and math CCR benchmarks by campus.

- Milby and Waltrip high schools had the greatest increases in the number of tenth grade students taking the PSAT/NMSQT, with increases of 99 and 97 students, respectively.
- Carnegie High School had the highest average total score at 1212, and DeBakey High School had the highest percentage of students who met both the ERW and math CCR benchmarks at 95.4 percent.
- High School for Law & Justice had the greatest increase in the percentage of students meeting both ERW and math CCR benchmarks with an increase of 19.5 percentage points.

Table 1D (p. 18) shows the number of eleventh grade students tested, average PSAT/NMSQT total score, and percentage of students meeting both the ERW and math CCR benchmarks by campus.

- Sharpstown High School had the greatest increase in the number of eleventh grade students taking the PSAT/NMSQT, with an increase of 149 students.
- Carnegie High School had the highest average score at 1321 followed by DeBakey at 1280.
- DeBakey and Carnegie high schools had the highest percentage of students meeting both college and career readiness benchmarks at 98.9 percent and 95.5 percent, respectively.
- Texas Connections Academy had the greatest increase in the average total score and the greatest increase in the percentage of students meeting both ERW and math CCR benchmarks with increases of 94 points and 26.4 percentage points, respectively. However, it should be noted that it had 47 percent fewer students tested in 2018 than in 2017.

Table 1B. PSAT 8/9 Grade 9 Mean Total Scores and Percent Met CCR Benchmarks by Campus, 2017 and 2018
(Sorted by 2018 Mean Total Score)

Campus	Number Tested			Change	Mean Test Score			Change	% Met Both CCR Benchmarks			Change
	2017	2018			2017	2018			2017	2018		
Carnegie HS	180	331		151	1125	1142		17	97.2	97.3		0.1
HS Perf. Vis. Arts	177	191		14	1093	1074		-19	83.6	84.3		0.7
DeBakey HS	296	293		-3	1055	1066		11	83.4	84.3		0.9
Challenge ECHS	130	125		-5	935	985		50	56.2	71.2		15.0
Hou Acad. Intl.	139	137		-2	941	963		22	55.4	61.3		5.9
Eastwood Acad	117	103		-14	950	957		7	62.4	68.0		5.6
East ECHS	119	117		-2	946	950		4	63.9	70.9		7.0
Bellaire HS	898	764		-134	913	943		30	43.8	54.2		10.4
N. Houston ECHS	127	138		11	928	929		1	56.7	63.0		6.3
Sharpstown Intl	163	190		27	861	923		62	34.4	51.6		17.2
YWCPA	58	79		21	893	916		23	31.0	50.6		19.6
HS for Law & Justice	119	145		26	875	901		26	32.8	42.1		9.3
Lamar HS	788	759		-29	900	901		1	41.1	46.5		5.4
Energy Inst HS	200	215		15	876	878		2	38.0	40.5		2.5
South ECHS	140	106		-34	814	876		62	20.0	36.8		16.8
Westside HS	788	793		5	851	866		15	33.5	40.2		6.7
Heights HS	643	656		13	822	864		42	27.4	38.0		10.6
Long Acad	67	48		-19	877	853		-24	34.3	27.1		-7.2
Leland YMCPA	63	58		-5	901	842		-59	49.2	31.0		-18.2
Mount Carmel Acad.	82	80		-2	842	834		-8	26.8	25.0		-1.8
Waltrip HS	566	511		-55	780	803		23	16.4	23.9		7.5
Chavez HS	812	710		-102	794	800		6	24.0	26.3		2.3
Mid Coll - Fraga	18	29		11	784	793		9	0.0	13.8		13.8
Northside HS	376	366		-10	765	788		23	13.0	18.3		5.3
E-STEM West HS	120	97		-23	758	778		20	18.3	19.6		1.3
E-STEM Central HS	59	73		14	813	777		-36	20.3	21.9		1.6
Jones HS	101	72		-29	781	774		-7	14.9	9.7		-5.2
Milby HS	623	578		-45	769	766		-3	15.9	17.0		1.1
Scarborough HS	190	136		-54	759	750		-9	13.2	15.4		2.2
Westbury HS	626	569		-57	744	747		3	10.2	13.7		3.5
Houston MSTC HS	731	665		-66	731	731		0	8.2	10.1		1.9
Kashmere HS	192	197		5	707	731		24	3.6	9.1		5.5
Austin HS	423	430		7	729	726		-3	5.7	9.1		3.4
Furr HS	253	225		-28	729	721		-8	5.1	10.2		5.1
North Forest HS	281	279		-2	715	710		-5	8.2	7.2		-1.0
Sharpstown HS	553	432		-121	687	710		23	3.6	8.8		5.2
Sterling HS	401	448		47	717	706		-11	5.7	6.3		0.6
Wisdom HS	344	390		46	715	704		-11	4.9	7.4		2.5
Washington HS	179	198		19	722	703		-19	7.8	8.1		0.3
Madison HS	343	461		118	707	692		-15	3.8	5.4		1.6
Worthing HS	250	193		-57	689	692		3	3.2	4.1		0.9
Wheatley HS	271	181		-90	685	685		0	2.2	5.5		3.3
Yates HS	224	231		7	689	673		-16	3.1	3.0		-0.1
Mid Coll - Gulfton	19	33		14	684	668		-16	15.8	6.1		-9.7
Tx Conn. Acad.	1	1		0	*	*		*	*	*		*

Sources: PSAT 8/9 2018 Fall Scores by Institution, 9th grade, 1/29/2019; PSAT 8/9 & PSAT/NMSQT Reports, Fall 2017 Report

"--" indicates no students tested, no students met the benchmark

* The College Board masks data for fewer than 10 test-takers.

Table 1C. PSAT/NMSQT Grade 10 Mean Total Scores and Percent Met CCR Benchmarks by Campus, 2017 and (Sorted by 2018 Mean Total Score)

Campus	Number Tested			Change	Mean Test Score			Change	% Met Both CCR Benchmarks			Change
	2017	2018			2017	2018			2017	2018		
Carnegie HS	158	193		35	1230	1212		-18	98.1	94.8		-3.3
DeBakey HS	220	219		-1	1174	1185		11	96.4	95.4		-1.0
HS Perf. Vis. Arts	196	188		-8	1107	1147		40	70.4	79.3		8.9
Tx Conn. Acad.	36	25		-11	1025	1092		67	55.6	68.0		12.4
Bellaire HS	747	696		-51	983	1020		37	45.2	53.9		8.7
Challenge ECHS	114	135		21	978	1013		35	49.1	55.6		6.5
Eastwood Acad	97	118		21	984	1000		16	50.5	53.4		2.9
N. Houston ECHS	117	118		1	963	999		36	44.4	59.3		14.9
YWCPA	57	38		-19	920	990		70	28.1	42.1		14.0
East ECHS	137	110		-27	967	982		15	48.2	59.1		10.9
Hou Acad. Intl.	117	133		16	965	982		17	37.6	42.1		4.5
Leland YMCPA	48	57		9	965	952		-13	47.9	38.6		-9.3
Lamar HS	720	664		-56	928	945		17	33.9	41.3		7.4
Energy Inst HS	164	182		18	942	930		-12	40.9	40.1		-0.8
HS for Law & Justice	140	108		-32	871	925		54	15.7	35.2		19.5
Sharpstown Intl	139	148		9	959	925		-34	51.8	37.8		-14.0
Westside HS	659	661		2	922	915		-7	35.4	34.3		-1.1
Long Acad	47	61		14	885	910		25	21.3	29.5		8.2
Heights HS	572	569		-3	866	888		22	18.5	28.5		10.0
Mount Carmel Acad.	86	88		2	872	880		8	17.4	27.3		9.9
South ECHS	127	121		-6	854	874		20	15.0	19.8		4.8
E-STEM Central HS	49	86		37	795	862		67	8.2	24.4		16.2
Chavez HS	688	639		-49	842	840		-2	19.3	21.9		2.6
Jones HS	109	94		-15	824	830		6	11.9	16.0		4.1
Waltrip HS	399	496		97	824	822		-2	13.0	16.7		3.7
Milby HS	404	503		99	801	813		12	9.9	15.1		5.2
Mid Coll - Fraga	35	33		-2	769	805		36	2.9	6.1		3.2
Northside HS	328	333		5	806	805		-1	9.5	15.0		5.5
Scarborough HS	146	146		0	831	792		-39	12.3	10.3		-2.0
Mid Coll - Gulfon	31	39		8	740	789		49	3.2	12.8		9.6
Westbury HS	494	555		61	786	780		-6	8.3	9.9		1.6
Austin HS	417	351		-66	779	776		-3	7.0	7.7		0.7
Furr HS	253	226		-27	775	764		-11	8.3	4.9		-3.4
Houston MSTC HS	633	577		-56	761	758		-3	3.3	6.2		2.9
North Forest HS	204	217		13	744	753		9	2.5	3.7		1.2
Sterling HS	304	350		46	766	752		-14	5.6	5.4		-0.2
Kashmere HS	152	185		33	745	748		3	1.3	3.2		1.9
Washington HS	174	145		-29	762	747		-15	5.2	7.6		2.4
Wisdom HS	435	431		-4	762	735		-27	6.9	3.9		-3.0
Yates HS	166	147		-19	742	734		-8	2.4	4.1		1.7
Sharpstown HS	357	398		41	763	732		-31	4.8	3.8		-1.0
E-STEM West HS	70	53		-17	799	718		-81	10.0	9.4		-0.6
Wheatley HS	202	172		-30	751	717		-34	4.0	1.7		-2.3
Madison HS	365	334		-31	744	705		-39	3.0	2.1		-0.9
Worthing HS	177	160		-17	736	704		-32	4.0	4.4		0.4

Sources: PSAT/NMSQT 2018 Fall Scores by Institution, 10th grade, 1/29/2019; PSAT 8/9 & PSAT/NMSQT Reports, Fall 2017 Report

"--" indicates no students tested, no students met the benchmark

Table 1D. PSAT/NMSQT Grade 11 Mean Total Scores and Percent Met CCR Benchmarks by Campus, 2017 and 2018
(Sorted by 2018 Mean Total Score)

Campus	Number Tested			Change	Mean Test Score			Change	% Met Both CCR Benchmarks			Change
	2017	2018			2017	2018			2017	2018		
Carnegie HS	146	133		-13	1290	1321		31	95.2	95.5		0.3
DeBakey HS	191	175		-16	1326	1280		-46	100.0	98.9		-1.1
HS Perf. Vis. Arts	172	190		-6	1170	1184		14	73.3	76.3		3.0
Tx Conn. Acad.	116	61		-55	1021	1115		94	31.0	57.4		26.4
Bellaire HS	601	630		29	1063	1084		21	50.1	51.9		1.8
Challenge ECHS	104	103		-1	1105	1054		-51	64.4	36.9		-27.5
Leland YMCPA	45	43		-2	1022	1051		29	44.4	48.8		4.4
Eastwood Acad	103	103		0	1047	1049		2	59.2	51.5		-7.7
Hou Acad. Intl.	116	104		-12	1017	1035		18	39.7	39.4		-0.3
East ECHS	120	126		6	1060	1034		-26	62.5	40.5		-22.0
Sharpstown Intl	164	134		-30	994	1023		29	36.6	47.8		11.2
N. Houston ECHS	116	115		-1	1036	1009		-27	50.9	42.6		-8.3
Energy Inst HS	189	161		-28	965	1006		41	32.8	36.6		3.8
Lamar HS	710	633		-77	986	1000		14	36.1	37.3		1.2
YWCPA	36	46		10	978	990		12	22.2	21.7		-0.5
Westside HS	605	586		-19	1012	987		-25	44.3	37.0		-7.3
Long Acad	51	42		-9	913	941		28	9.8	28.6		18.8
Heights HS	512	483		-29	935	932		-3	24.4	19.9		-4.5
Mount Carmel Acad.	90	83		-7	926	930		4	20.0	18.1		-1.9
South ECHS	69	105		36	918	921		3	17.4	21.0		3.6
HS for Law & Justice	92	123		31	933	915		-18	13.0	8.1		-4.9
Chavez HS	602	612		10	878	888		10	14.5	18.1		3.6
Milby HS	259	330		71	845	869		24	8.9	15.2		6.3
Waltrip HS	332	366		34	868	863		-5	12.0	13.1		1.1
Jones HS	106	94		-12	894	860		-34	19.8	9.6		-10.2
E-STEM Central HS	39	117		78	783	851		68	2.6	10.3		7.7
Northside HS	315	317		2	842	843		1	7.3	9.1		1.8
Scarborough HS	153	119		-34	819	836		17	5.2	9.2		4.0
Mid Coll - Fraga	29	14		-15	796	820		24	0.0	0.0		0.0
Westbury HS	470	453		-17	817	817		0	4.5	7.5		3.0
Washington HS	132	129		-3	781	812		31	6.1	7.0		0.9
Furr HS	212	187		-25	807	805		-2	6.6	5.3		-1.3
Austin HS	346	341		-5	822	804		-18	4.9	7.3		2.4
Houston MSTC HS	599	560		-39	793	799		6	4.0	5.5		1.5
Sterling HS	218	240		22	793	798		5	4.1	7.5		3.4
Wisdom HS	367	423		56	789	782		-7	4.9	5.2		0.3
Madison HS	342	303		-39	796	780		-16	3.8	3.6		-0.2
Worthing HS	111	147		36	751	771		20	0.0	2.7		2.7
Mid Coll - Gulfon	33	37		4	727	770		43	0.0	5.4		5.4
Sharpstown HS	178	327		149	781	770		-11	2.2	4.0		1.8
Yates HS	145	144		-1	788	767		-21	2.8	5.6		2.8
Kashmere HS	127	143		16	779	758		-21	2.4	1.4		-1.0
North Forest HS	162	202		40	762	757		-5	1.2	2.5		1.3
Wheatley HS	168	146		-22	764	751		-13	0.6	2.1		1.5
E-STEM West HS	51	--			865	--			7.8	--		
Victory Prep South	43	--			773	--			0.0	--		

Sources: PSAT/NMSQT 2018 Fall Scores by Institution, 11th grade, 1/29/2019; PSAT 8/9 & PSAT/NMSQT Reports, Fall 2017 Report

"--" indicates no students tested, no students met the benchmark

Table 2A (p. 20) shows the average PSAT 8/9 mathematics and ERW scores and the percentage of eighth grade students meeting the math and ERW CCR benchmarks by campus.

- Eighth grade students at T.H. Rogers School had the highest average score in both mathematics and ERW at 529 and 561, respectively.
- T.H. Rogers School had the highest percentage of eighth grade students meeting CCR benchmarks for mathematics at 96.6 percent, and the Mandarin Immersion School had the highest percentage of eighth grade students meeting the CCR benchmark for ERW at 100.0 percent, respectively.
- E-STEM West Middle School had the greatest increase in the percentage of students meeting the mathematics CCR benchmark with an increase of 28.2 percentage points.
- Wharton Dual Language had the greatest increase in the percentage of eighth grade students meeting the ERW CCR benchmark at 48.9 percentage points.

Table 2B (p. 21) shows the average PSAT 8/9 mathematics and ERW scores and the percentage of ninth grade students meeting the math and ERW CCR benchmarks by campus.

- Carnegie High School had the highest average score in both mathematics and ERW at 570 and 571, respectively.
- Ninth grade students at South Early College High School had the greatest increase in the mean mathematics score at 40 points, followed by Sharpstown International High School at 32 points.
- Ninth grade students at Sharpstown International had the greatest increase in the mean ERW score at 30 points, followed by Challenge Early College High School at 25 points.
- Carnegie High School had the highest percentage of ninth grade students meeting CCR benchmarks for mathematics and ERW at 97.9 percent and 98.8 percent, respectively.
- Ninth grade students at Sharpstown International had the greatest increase in the percentage of students meeting the math CCR benchmark at 19.3 percentage points followed by South ECHS at 18.6 percentage points.
- Sharpstown International High School had the greatest increase in the percentage of students meeting the ERW CCR benchmark at 15.9 percentage points, followed by South ECHS at 13.7 percentage points.

Campus	Mathematics									Evidence-Based Reading and Writing								
	Mean Score			% Met CCR			Mean Score			% Met CCR			Mean Score			% Met CCR		
	2017	2018	Change	2017	2018	Change	2017	2018	Change	2017	2018	Change	2017	2018	Change	2017	2018	Change
Attucks MS	350	338	-12	12.3	9.7	-2.6	339	330	-9	17.5	18.7	1.2	339	330	-9	17.5	18.7	1.2
Baylor College MS	440	437	-3	52.2	53.7	1.5	441	438	-3	72.9	65.6	-7.3	441	438	-3	72.9	65.6	-7.3
Black MS	417	417	0	45.5	43.2	-2.3	416	414	-2	54.2	54.8	0.6	416	414	-2	54.2	54.8	0.6
Briarwood	458	480	22	77.8	88.1	10.3	477	475	-2	93.3	90.5	-2.8	477	475	-2	93.3	90.5	-2.8
Burbank MS	409	410	1	44.5	41.1	-3.4	390	383	-7	51.7	42.7	-9.0	390	383	-7	51.7	42.7	-9.0
Chrysalis MS	446	462	16	62.7	72.1	9.4	445	431	-14	80.7	72.1	-8.6	445	431	-14	80.7	72.1	-8.6
Clifton MS	376	371	-5	21.3	23.7	2.4	372	367	-5	37.8	33.0	-4.8	372	367	-5	37.8	33.0	-4.8
Cullen MS	356	346	-10	16.7	8.9	-7.8	356	339	-17	22.7	15.2	-7.5	356	339	-17	22.7	15.2	-7.5
Deady MS	363	360	-3	16.3	16.7	0.4	345	351	6	22.7	23.2	0.5	345	351	6	22.7	23.2	0.5
Edison MS	361	346	-15	15.8	10.2	-5.6	344	341	-3	21.9	18.4	-3.5	344	341	-3	21.9	18.4	-3.5
Energized MS	392	384	-8	32.2	26.0	-6.2	365	356	-9	33.9	26.0	-7.9	365	356	-9	33.9	26.0	-7.9
E-STEM Central MS	349	347	-2	6.1	11.1	5.0	336	341	5	17.2	17.2	0.0	336	341	5	17.2	17.2	0.0
E-STEM West MS	405	454	49	34.5	62.7	28.2	379	416	37	44.8	66.1	21.3	379	416	37	44.8	66.1	21.3
Fleming MS	369	361	-8	16.4	19.0	2.6	361	361	0	27.1	30.6	3.5	361	361	0	27.1	30.6	3.5
Fondren MS	395	369	-26	32.7	16.4	-16.3	364	357	-7	31.3	24.8	-6.5	364	357	-7	31.3	24.8	-6.5
Forville MS	366	351	-15	18.1	11.0	-7.1	356	336	-20	25.7	14.4	-11.3	356	336	-20	25.7	14.4	-11.3
Garden Oaks	426	--	--	43.2	--	--	442	--	--	62.2	--	--	442	--	--	62.2	--	--
Gregory-Lincoln PK-8	344	344	0	13.4	10.3	-3.1	350	340	-10	26.8	24.4	-2.4	350	340	-10	26.8	24.4	-2.4
Hamilton MS	405	408	3	41.1	41.9	0.8	411	407	-4	63.6	58.9	-4.7	411	407	-4	63.6	58.9	-4.7
Hartman MS	382	379	-3	27.7	24.4	-3.3	376	363	-13	38.4	34.2	-4.2	376	363	-13	38.4	34.2	-4.2
Henry MS	356	351	-5	14.1	9.7	-4.4	347	347	0	20.9	20.9	0.0	347	347	0	20.9	20.9	0.0
Hogg MS	400	415	15	32.2	42.1	9.9	395	418	23	50.2	60.3	10.1	395	418	23	50.2	60.3	10.1
Holland MS	350	354	4	11.6	14.1	2.5	343	348	5	18.6	27.6	9.0	343	348	5	18.6	27.6	9.0
Inspired Acad	336	332	-4	1.4	5.3	3.9	330	339	9	5.5	11.8	6.3	330	339	9	5.5	11.8	6.3
Key MS	348	350	2	4.5	10.9	6.4	336	342	6	16.9	21.7	4.8	336	342	6	16.9	21.7	4.8
Lanier MS	469	489	20	74.4	79.0	4.6	492	506	14	87.4	90.9	3.5	492	506	14	87.4	90.9	3.5
Lawson MS	355	357	2	12.5	13.9	1.4	337	331	-6	15.8	19.4	3.6	337	331	-6	15.8	19.4	3.6
Leland YMCPA	386	406	20	23.9	38.7	14.8	403	403	0	61.4	54.8	-6.6	403	403	0	61.4	54.8	-6.6
Long Acad	--	348	--	14.0	--	--	--	347	--	22.4	--	0.0	--	347	--	22.4	--	0.0
Mandarin Immersion	--	511	--	93.3	--	--	--	508	--	100.0	--	0.0	--	508	--	100.0	--	0.0
Marshall MS	375	373	-2	23.2	19.8	-3.4	357	356	-1	25.1	27.9	2.8	357	356	-1	25.1	27.9	2.8
McReynolds MS	380	376	-4	25.0	16.0	-9.0	368	341	-27	35.5	21.6	-13.9	368	341	-27	35.5	21.6	-13.9
Meyerland MS	412	398	-14	43.8	33.7	-10.1	418	409	-9	59.8	56.7	-3.1	418	409	-9	59.8	56.7	-3.1
Milby HS	--	*	--	*	--	--	--	*	--	*	--	0.0	--	*	--	*	--	0.0
Navarro MS	349	356	7	11.0	16.5	5.5	340	350	10	23.5	27.2	3.7	340	350	10	23.5	27.2	3.7
Ortiz MS	368	361	-7	18.1	20.7	2.6	353	348	-5	27.8	22.3	-5.5	353	348	-5	27.8	22.3	-5.5
Pershing MS	416	425	9	42.0	43.5	1.5	427	434	7	60.8	63.3	2.5	427	434	7	60.8	63.3	2.5
Pilgrim Acad.	379	395	16	19.8	33.0	13.2	372	371	-1	35.4	38.5	3.1	372	371	-1	35.4	38.5	3.1
Pin Oak MS	490	483	-7	79.8	73.2	-6.6	502	483	-19	89.0	82.8	-6.2	502	483	-19	89.0	82.8	-6.2
Reagan Ed Ctr	366	369	3	10.0	19.5	9.5	357	367	10	25.6	40.7	15.1	357	367	10	25.6	40.7	15.1
Revere MS	373	371	-2	23.5	24.9	1.4	367	365	-2	35.6	31.9	-3.7	367	365	-2	35.6	31.9	-3.7
Rice School	416	404	-12	49.4	43.7	-5.7	421	421	0	73.1	67.5	-5.6	421	421	0	73.1	67.5	-5.6
Rogers, T.H.	537	529	-8	96.6	96.6	0.0	545	561	16	100.0	99.3	-0.7	545	561	16	100.0	99.3	-0.7
Rusk School	411	392	-19	40.4	28.9	-11.5	399	395	-4	61.5	50.0	-11.5	399	395	-4	61.5	50.0	-11.5
Sharpstown Intl	396	431	35	33.3	50.3	17.0	392	415	23	50.3	66.2	15.9	392	415	23	50.3	66.2	15.9
Stevenson MS	411	414	3	42.7	44.6	1.9	395	399	4	52.9	53.6	0.7	395	399	4	52.9	53.6	0.7
Sugar Grove MS	346	327	-19	9.6	6.3	-3.3	343	327	-16	18.9	9.5	-9.4	343	327	-16	18.9	9.5	-9.4
Tanglewood MS	389	404	15	29.2	39.0	9.8	402	410	8	53.8	57.1	3.3	402	410	8	53.8	57.1	3.3
Thomas MS	342	342	0	6.6	6.6	0.0	321	334	13	13.2	13.2	0.0	321	334	13	13.2	13.2	0.0
Victory Prep North	360	--	--	13.0	--	--	335	--	--	21.7	--	0.0	335	--	--	21.7	--	0.0
Welch MS	346	342	-4	10.0	11.0	1.0	332	322	-10	20.5	13.2	-7.3	332	322	-10	20.5	13.2	-7.3
West Briar MS	413	415	2	44.9	39.3	-5.6	433	424	-9	64.2	63.8	-0.4	433	424	-9	64.2	63.8	-0.4
Wharton Dual Lang.	430	471	41	58.3	77.3	19.0	387	457	70	37.5	86.4	48.9	387	457	70	37.5	86.4	48.9
Williams MS	340	336	-4	5.5	3.7	-1.8	340	333	-7	18.8	16.0	-2.8	340	333	-7	18.8	16.0	-2.8
Wilson Mont.	438	431	-7	53.8	45.7	-8.1	477	463	-14	80.8	74.3	-6.5	477	463	-14	80.8	74.3	-6.5
Young Scholars	352	*	--	30.0	*	--	339	*	--	10.0	*	0.0	339	*	--	10.0	*	0.0
YWCPA	394	411	17	30.8	36.3	5.5	434	461	27	78.5	88.8	10.3	434	461	27	78.5	88.8	10.3

Sources: PSAT/NMSQT 2018 Fall Scores by Institution, 11th grade, 1/29/2019; PSAT 8/9 & PSAT/NMSQT Reports, Fall 2017 Report

"--" indicates no students tested, no students met the benchmark

* The College Board masks data for fewer than 10 test-takers.

Campus	Mathematics								Evidence-Based Reading and Writing							
	Mean Score				% Met CCR				Mean Score				% Met CCR			
	2017	2018	Change		2017	2018	Change		2017	2018	Change		2017	2018	Change	
Austin HS	371	370		-1	10.2	15.6		5.4	358	356		-2	20.3	18.6		-1.7
Bellaire HS	452	470		18	46.8	56.9		10.1	462	473		11	64.5	69.5		5.0
Carnegie HS	568	570		2	97.8	97.9		0.1	557	571		14	98.9	98.8		-0.1
Challenge ECHS	467	491		24	60.8	75.2		14.4	469	494		25	81.5	88.0		6.5
Chavez HS	405	406		1	29.4	33.0		3.6	389	394		5	37.3	39.6		2.3
DeBakey HS	532	539		7	86.5	91.1		4.6	523	527		4	92.9	90.8		-2.1
East ECHS	480	480		0	73.1	72.6		-0.5	466	469		3	83.2	85.5		2.3
Eastwood Acad	476	484		8	66.7	75.7		9.0	474	473		-1	85.5	84.5		-1.0
Energy Inst HS	438	439		1	41.5	45.6		4.1	438	439		1	62	60.5		-1.5
E-STEM Central HS	418	398		-20	32.2	26.0		-6.2	394	379		-15	39	34.2		-4.8
E-STEM West HS	389	412		23	20.8	36.1		15.3	370	365		-5	28.3	27.8		-0.5
Furr HS	366	365		-1	9.1	16.0		6.9	363	356		-7	23.3	19.6		-3.7
Heights HS	410	430		20	32	42.8		10.8	412	433		21	49.3	59.6		10.3
Hou Acad. Intl.	458	478		20	58.3	65.7		7.4	483	484		1	84.9	86.9		2.0
Houston MSTC HS	375	371		-4	13	16.2		3.2	356	359		3	20	21.1		1.1
HS for Law & Justice	426	437		11	33.6	46.2		12.6	449	464		15	69.7	80.7		11.0
HS Perf. Vis. Arts	532	525		-7	84.7	84.8		0.1	561	549		-12	97.2	94.8		-2.4
Jones HS	403	386		-17	26.7	15.3		-11.4	378	389		11	29.7	33.3		3.6
Kashmere HS	360	367		7	9.4	11.7		2.3	347	364		17	12.5	23.4		10.9
Lamar HS	444	448		4	45.7	51.6		5.9	455	453		-2	67.1	65.9		-1.2
Leland YMCPA	450	422		-28	55.6	36.2		-19.4	451	420		-31	71.4	60.3		-11.1
Long Acad	443	425		-18	41.8	33.3		-8.5	434	428		-6	65.7	58.3		-7.4
Madison HS	358	346		-12	7.3	9.3		2.0	349	346		-3	15.2	13.7		-1.5
Mid Coll - Fraga	391	394		3	5.6	20.7		15.1	393	399		6	22.2	31.0		8.8
Mid Coll - Gulfon	358	330		-28	15.8	6.1		-9.7	325	338		13	31.6	12.1		-19.5
Milby HS	393	388		-5	23.4	22.0		-1.4	375	379		4	29.7	31.1		1.4
Mount Carmel Acad	417	414		-3	28	26.3		-1.7	425	421		-4	58.5	50.0		-8.5
N. Houston ECHS	480	477		-3	74	71.0		-3.0	449	452		3	68.5	75.4		6.9
North Forest HS	362	362		0	11	11.5		0.5	353	348		-5	18.1	14.7		-3.4
Northside HS	385	397		12	17.8	25.1		7.3	380	392		12	30.6	38.3		7.7
Scarborough HS	387	381		-6	19.5	22.1		2.6	372	369		-3	27.4	26.5		-0.9
Sharpstown HS	350	359		9	6.1	12.5		6.4	337	352		15	11.9	16.9		5.0
Sharpstown Intl	443	475		32	45.4	64.7		19.3	418	448		30	50.9	66.8		15.9
South ECHS	404	444		40	25.7	44.3		18.6	409	432		23	42.9	56.6		13.7
Sterling HS	360	357		-3	8.2	10.3		2.1	357	349		-8	19.5	17.4		-2.1
V Prep South	369	--			13.6	--			373	--			24.2	--		
Waltrip HS	395	404		9	21.2	29.4		8.2	385	399		14	33.7	41.3		7.6
Washington HS	361	345		-16	12.3	9.6		-2.7	361	358		-3	22.3	21.7		-0.6
Westbury HS	376	377		1	12.9	18.1		5.2	368	370		2	27.3	27.9		0.6
Westside HS	422	432		10	36.8	44.9		8.1	429	434		5	54.1	57.1		3.0
Wheatley HS	344	333		-11	4.8	9.4		4.6	341	352		11	9.2	17.7		8.5
Wisdom HS	365	355		-10	9.6	9.5		-0.1	350	349		-1	16.9	19.7		2.8
Worthing HS	349	346		-3	5.2	8.8		3.6	340	345		5	10.4	13.5		3.1
Yates HS	345	333		-12	4.5	6.1		1.6	343	340		-3	14.7	14.3		-0.4
YWCPA	431	442		11	36.2	51.9		15.7	462	474		12	72.4	82.3		9.9

Sources: PSAT/NMSQT 2018 Fall Scores by Institution, 11th grade, 1/29/2019; PSAT 8/9 & PSAT/NMSQT Reports, Fall 2017 Report

-- indicates no students tested, no students met the benchmark

Table 2C (p. 23) shows the average PSAT/NMSQT mathematics and ERW scores and the percentage of tenth grade students meeting the math and ERW CCR benchmarks by campus.

- Carnegie Vanguard High School had the highest average score in both mathematics and ERW at 604 and 608, respectively.
- Tenth grade students at E-STEM Central High School had the greatest increase in the mean mathematics score at 36 points, followed by YWCPA at 28 points, and Texas Connections Academy at 26 points.
- Tenth grade students at the High School for Law & Justice had the greatest increases in the mean ERW score at 44 points, followed by YWCPA at 42 points, and Texas Connections Academy at 41 points.
- DeBakey High School had the highest percentage of tenth grade students meeting CCR benchmarks for mathematics and ERW at 96.8 percent and 98.6 percent, respectively.
- Tenth grade students at High School for Law & Justice had the greatest increase in the percentage of students meeting math CCR benchmarks at 19.0 percentage points, and Middle College at Gulfton had the greatest increase in the percentage of tenth grade students meeting ERW CCR benchmarks at 23.6 percentage points.

Table 2D (p. 24) shows the average PSAT/NMSQT mathematics and ERW scores and the percentage of eleventh grade students meeting the math and ERW CCR benchmarks by campus.

- Carnegie High School had the highest average score in both mathematics and ERW at 663 and 658, respectively.
- Eleventh grade students at Texas Connections Academy had the greatest increase in the mean mathematics score at 47 points.
- Eleventh grade students at Texas Connections Academy had the greatest increase in the mean ERW score at 46 points, followed by E-STEM Central High School at 41 points.
- Texas Connections Academy had the greatest increase in the percentage of students meeting math benchmarks at 25.4 percentage points.
- DeBakey High School had the highest percentage of eleventh grade students meeting CCR benchmarks for both mathematics and ERW at 98.9 percent and 100.0 percent, respectively.
- Eleventh grade students at E-STEM Central High School had the greatest increase in the percentage of students meeting ERW benchmarks at 21.4 percentage points.

Campus	Mathematics									Evidence-Based Reading and Writing								
	Mean Score			% Met CCR			Mean Score			% Met CCR			Mean Score			% Met CCR		
	2017	2018	Change	2017	2018	Change	2017	2018	Change	2017	2018	Change	2017	2018	Change	2017	2018	Change
Austin HS	400	390		-10	9.4	10.8		1.4	379	386		7	22.3	25.4				3.1
Bellaire HS	487	507		20	46.2	55.3		9.1	496	513		17	68.8	73.3				4.5
Carnegie HS	613	604		-9	98.1	95.9		-2.2	617	608		-9	100.0	98.4				-1.6
Challenge ECHS	473	495		22	51.8	57.0		5.2	505	518		13	86.0	86.7				0.7
Chavez HS	429	419		-10	23.1	25.2		2.1	413	420		7	39.0	41.2				2.2
DeBakey HS	592	599		7	97.3	96.8		-0.5	583	586		3	99.1	98.6				-0.5
East ECHS	483	484		1	50.4	62.7		12.3	484	498		14	84.7	86.4				1.7
Eastwood Acad	490	498		8	54.6	57.6		3.0	494	503		9	86.6	82.2				-4.4
Energy Inst HS	465	459		-6	43.3	42.3		-1.0	477	471		-6	66.5	62.6				-3.9
E-STEM Central HS	398	434		36	10.2	25.6		15.4	397	428		31	34.7	46.5				11.8
E-STEM West HS	404	386		-18	14.3	13.2		-1.1	395	331		-64	30.0	15.1				-14.9
Furr HS	395	379		-16	10.7	6.2		-4.5	380	385		5	20.2	22.1				1.9
Heights HS	424	433		9	19.8	30.1		10.3	442	455		13	54.4	58.9				4.5
Hou Acad. Intl.	468	471		3	39.3	42.9		3.6	496	511		15	81.2	83.5				2.3
Houston MSTC HS	388	380		-8	5.2	7.6		2.4	374	378		4	17.2	21.0				3.8
HS for Law & Justice	436	446		10	17.1	36.1		19.0	434	478		44	54.3	76.9				22.6
HS Perf. Vis. Arts	528	548		20	71.4	79.8		8.4	580	599		19	91.3	98.4				7.1
Jones HS	417	417		0	17.4	19.1		1.7	407	413		6	35.8	39.4				3.6
Kashmere HS	378	373		-5	2.0	5.4		3.4	366	375		9	11.2	22.2				11.0
Lamar HS	451	460		9	35.6	44.7		9.1	477	485		8	66.8	69.6				2.8
Leland YMCPA	478	460		-18	52.1	38.6		-13.5	488	492		4	83.3	75.4				-7.9
Long Acad	446	458		12	27.7	34.4		6.7	440	453		13	61.7	60.7				-1.0
Madison HS	375	335		-40	3.8	2.7		-1.1	370	370		0	15.6	14.7				-0.9
Mid Coll - Fraga	395	398		3	2.9	6.1		3.2	374	406		32	17.1	30.3				13.2
Mid Coll - Gulfton	380	391		11	3.2	12.8		9.6	360	398		38	9.7	33.3				23.6
Milby HS	403	409		6	11.6	18.3		6.7	398	405		7	33.9	37.8				3.9
Mount Carmel Acad.	436	439		3	20.9	28.4		7.5	435	441		6	52.3	52.3				0.0
N. Houston ECHS	480	503		23	50.4	64.4		14.0	483	496		13	73.5	83.1				9.6
North Forest HS	374	377		3	2.9	5.5		2.6	370	376		6	14.2	21.2				7.0
Northside HS	407	410		3	11.9	19.2		7.3	399	395		-4	29.6	31.5				1.9
Scarborough HS	423	395		-28	17.1	11.0		-6.1	408	397		-11	37.7	29.5				-8.2
Sharpstown HS	388	371		-17	7.8	7.5		-0.3	375	362		-13	17.1	12.1				-5.0
Sharpstown Intl	491	472		-19	58.3	44.6		-13.7	468	453		-15	66.2	56.1				-10.1
South ECHS	420	431		11	18.1	24.8		6.7	434	442		8	52.0	51.2				-0.8
Sterling HS	386	378		-8	6.3	8.0		1.7	380	374		-6	24.3	20.3				-4.0
Tx Conn. Acad.	497	523		26	58.3	68.0		9.7	528	569		41	88.9	92.0				3.1
V Prep South	387	--			4.8	--			353	--			4.8	--				
Waltrip HS	413	404		-9	15.0	17.9		2.9	410	418		8	37.8	41.9				4.1
Washington HS	383	374		-9	5.7	8.3		2.6	380	373		-7	17.8	19.3				1.5
Westbury HS	397	386		-11	9.7	11.2		1.5	389	394		5	26.3	29.4				3.1
Westside HS	459	453		-6	37.6	35.4		-2.2	462	462		0	60.5	61.1				0.6
Wheatley HS	383	355		-28	5.4	1.7		-3.7	368	362		-6	13.9	14.0				0.1
Wisdom HS	389	372		-17	9.2	4.6		-4.6	374	363		-11	17.9	14.2				-3.7
Worthing HS	369	351		-18	4.5	4.4		-0.1	368	353		-15	15.8	11.3				-4.5
Yates HS	370	361		-9	3.0	4.8		1.8	373	373		0	21.1	27.9				6.8
YWCPA	441	469		28	29.8	44.7		14.9	479	521		42	71.9	94.7				22.8

Sources: PSAT/NMSQT 2018 Fall Scores by Institution, 10th grade, 1/29/2019; PSAT 8/9 & PSAT/NMSQT Reports, Fall 2017 Report

"--" indicates no students tested, no students met the benchmark

Campus	Mathematics									Evidence-Based Reading and Writing								
	Mean Score			% Met CCR			Mean Score			% Met CCR			Mean Score			% Met CCR		
	2017	2018	Change	2017	2018	Change	2017	2018	Change	2017	2018	Change	2017	2018	Change	2017	2018	Change
Austin HS	417	407		-10	6.9	8.8		1.9	405	397		-8	19.9	22.3		2.4		
Bellaire HS	528	536		8	51.6	53.5		1.9	536	548		12	73.0	76.2		3.2		
Carnegie HS	644	663		19	95.2	95.5		0.3	646	658		12	100.0	99.2		-0.8		
Challenge ECHS	535	501		-34	66.3	38.8		-27.5	570	554		-16	91.3	91.3		0.0		
Chavez HS	445	440		-5	17.9	19.3		1.4	433	448		15	35.9	47.1		11.2		
DeBakey HS	676	646		-30	100.0	98.9		-1.1	650	634		-16	100.0	100.0		0.0		
East ECHS	529	506		-23	67.5	42.9		-24.6	531	528		-3	86.7	84.1		-2.6		
Eastwood Acad	529	525		-4	63.1	53.4		-9.7	518	524		6	82.5	84.5		2.0		
Energy Inst HS	477	496		19	36.5	40.4		3.9	489	510		21	59.3	68.3		9.0		
E-STEM Central HS	403	430		27	2.6	13.7		11.1	380	421		41	7.7	29.1		21.4		
E-STEM West HS	439	--			11.8	--			426	--			33.3	0.0		-33.3		
Furr HS	405	398		-7	6.6	5.3		-1.3	401	407		6	20.3	26.2		5.9		
Heights HS	466	451		-15	27.3	20.9		-6.4	470	482		12	54.1	61.9		7.8		
Hou Acad. Intl.	496	502		6	40.5	40.4		-0.1	521	533		12	81.0	82.7		1.7		
Houston MSTC HS	400	402		2	4.5	6.6		2.1	393	397		4	17.9	20.2		2.3		
HS for Law & Justice	454	436		-18	13.0	8.9		-4.1	479	479		0	58.7	60.2		1.5		
HS Perf. Vis. Arts	562	573		11	73.3	77.9		4.6	608	611		3	97.7	94.2		-3.5		
Jones HS	458	430		-28	22.6	13.8		-8.8	436	429		-7	35.8	34.0		-1.8		
Kashmere HS	393	374		-19	4.7	2.1		-2.6	386	385		-1	12.6	15.4		2.8		
Lamar HS	484	488		4	36.8	39.0		2.2	502	512		10	65.4	68.9		3.5		
Leland YMCPA	503	517		14	51.1	48.8		-2.3	519	534		15	75.6	83.7		8.1		
Long Acad	461	465		4	21.6	28.6		7.0	451	476		25	39.2	52.4		13.2		
Madison HS	402	385		-17	5.3	3.6		-1.7	393	396		3	19.0	20.1		1.1		
Mid Coll - Fraga	403	393		-10	0.0	0.0		0.0	392	427		35	20.7	28.6		7.9		
Mid Coll - Gulfon	368	386		18	0.0	5.4		5.4	358	385		27	9.1	16.2		7.1		
Milby HS	429	434		5	12.4	16.7		4.3	416	436		20	26.3	41.5		15.2		
Mount Carmel Acad.	460	453		-7	24.4	20.5		-3.9	466	478		12	51.1	55.4		4.3		
N. Houston ECHS	513	499		-14	51.7	44.3		-7.4	523	511		-12	83.6	77.4		-6.2		
North Forest HS	383	377		-6	1.2	3.0		1.8	379	381		2	13.0	16.8		3.8		
Northside HS	426	423		-3	9.5	12.3		2.8	416	420		4	25.1	30.0		4.9		
Scarborough HS	415	414		-1	7.8	11.8		4.0	404	421		17	20.9	31.1		10.2		
Sharpstown HS	400	386		-14	2.8	5.2		2.4	381	384		3	14.6	18.0		3.4		
Sharpstown Intl	496	514		18	40.2	51.5		11.3	498	509		11	70.1	74.6		4.5		
South ECHS	454	453		-1	18.8	22.9		4.1	464	468		4	56.5	52.4		-4.1		
Sterling HS	402	395		-7	5.0	8.3		3.3	391	403		12	16.5	26.7		10.2		
Tx Conn. Acad.	488	535		47	33.6	59.0		25.4	533	579		46	80.2	90.2		10.0		
V Prep South	385	--			0.0	--			389	--			11.6	--				
Waltrip HS	435	424		-11	13.6	14.2		0.6	434	439		5	39.2	40.7		1.5		
Washington HS	401	400		-1	6.8	7.0		0.2	380	412		32	17.4	24.0		6.6		
Westbury HS	409	403		-6	5.5	8.4		2.9	408	414		6	24.7	26.7		2.0		
Westside HS	506	489		-17	46.4	39.1		-7.3	506	497		-9	69.3	63.5		-5.8		
Wheatley HS	388	369		-19	0.6	2.1		1.5	376	382		6	13.1	11.6		-1.5		
Wisdom HS	404	393		-11	7.6	6.4		-1.2	385	389		4	14.7	20.1		5.4		
Worthing HS	376	384		8	1.8	2.7		0.9	375	387		12	8.1	15.6		7.5		
Yates HS	393	382		-11	2.8	6.3		3.5	394	385		-9	25.5	16.0		-9.5		
YWCPA	462	470		8	22.2	21.7		-0.5	516	521		5	83.3	76.1		-7.2		

Sources: PSAT/NMSQT 2018 Fall Scores by Institution, 11th grade, 1/29/2019; PSAT 8/9 & PSAT/NMSQT Reports, Fall 2017 Report

"--" indicates no students tested, no students met the benchmark

Conclusion

HISD launched the *PSAT for All* initiative in 2003 as way to enroll more students in Advanced Placement courses and prepare them to be successful on the SAT which is required by most colleges. The district-wide initiative enabled all HISD tenth graders to take the PSAT/NMSQT for free. On August 12, 2010, the HISD Board of Education expanded the *PSAT for All* program to include incoming ninth-graders for the 2010–2011 school year. Currently, the district supports participation in the PSAT 8/9 and the PSAT/NMSQT by paying for the exams in grades 8 through 10, resulting in participation rates that surpass those of the state and the nation.

Over the past four years, PSAT/NMSQT participation for tenth grade students has increased by 359 students from 10,953 to 11,302 and eighth grade participation on the PSAT 8/9 has increased by 666 students from 10,907 to 11,573. In 2018, the district administered the PSAT/NMSQT to 82 percent of students in grade 10 and 85 percent of students in grade 8. This exposure to college readiness and entrance exams such as the PSAT represents an integral step to succeeding on the SAT, a widely accepted college entrance exam.

An analysis of performance on the PSAT 8/9 and the PSAT/NMSQT revealed that mean subject and total scores for the district were lower than those for Texas and the total group at all grade levels. Mean math scores were higher than ERW scores for grades eight and nine, but math scores were still lower than their state and total group counterparts. Conversely, mean ERW scores were higher than mean math scores for grades ten and eleven, but ERW scores were still lower than their state and total group counterparts. Students at all grade levels were less likely to meet CCR benchmarks compared to their state and total group counterparts. Performance differences existed across student groups in both assessments as well as across campuses. In addition, from 2015 to 2018, the percentage of ninth grade Asian, White, Two or More Races, Hispanic, African American, and all students meeting both CCR and math benchmarks increased, and the percentage of students meeting ERW benchmarks for all students, African American, Asian, Hispanic, White, and Two or More Races increased.