

MEMORANDUM

July 9, 2013

TO: School Board Members

FROM: Terry B. Grier, Ed.D.
Superintendent of Schools

SUBJECT: **GRADUATION AND DROPOUT ANALYSIS: 2011–2012**

CONTACT: Carla Stevens (713) 556-6700

Attached are the graduation and dropout data (four-year and five-year) for the 2011–2012 academic year. The 2012 four-year longitudinal cohort includes students who attended ninth grade for the first time in the 2008-09 school year while the 2011 five-year cohort includes students attending ninth grade for the first time in the 2007-2008 school year. Annual rates are reported at the district and campus level, and analyzed on the basis of ethnicity and economically disadvantaged status. In addition, rates for English language learners (ELL) and Students with Disabilities (SWD) are reported in the appendices.

State accountability ratings were not assigned in 2012 because the public school accountability system was undergoing a statutorily mandated redesign (TEC §39.053). In 2011, TEA introduced six criteria that exclude a student from the longitudinal rate calculations for campus and district reporting (see **Appendix A**). The impact of the exclusions in 2012 is as follows: an increase of 2.9 percentage points in the four-year graduation rate, no change in the annual dropout rate in grades 7-8, and a reduction of 1.2 percentage points in the four-year dropout rate in grades 9-12.

Comparisons with years prior to 2011 should be based on the results without exclusions (**Figures 1a, 2a, and 3a, and Appendices B and E**). The results with exclusions are aligned with the new state accountability system and should be used for 2011 and subsequent years (**Figures 1b, 2b and 3b, and Appendices C, D, and F**).

Findings:

- The longitudinal four-year graduation rate for all students in grades 9-12 increased by 10.6 percentage points during 2008-2012 (**Figure 1a**) while the longitudinal four-year dropout rate declined by 6.2 percentage points during the same period (**Figure 3a**).
- The Hispanic-White gap in the four-year graduation rate declined from 21.9 percentage points in 2008 to 11.6 percentage points in 2012 (**Figure 1a**).
- The African American-White gap in the four-year graduation rate declined from 16.7 percentage points in 2008 to 12.3 percentage points in 2012 (**Figure 1a**).
- The annual dropout rate for all students in grades 7-8 declined by 0.1 percentage point during 2008-2012 (**Figure 2a**).
- The Hispanic-White gap in the annual dropout rate in grades 7-8 declined from 0.5 percentage point in 2008 to 0.2 percentage point in 2012 (**Figure 2a**).
- The African American-White gap in the annual dropout rate in grades 7-8 declined from 0.6 percentage point in 2008 to 0.3 percentage point in 2012 (**Figure 2a**).
- The Hispanic-White gap in the four-year dropout rate declined from 12.3 percentage points in 2008 to 6.9 percentage points in 2012 (**Figure 3a**).
- The African American-White gap in the four-year dropout rate declined from 11.1 percentage points in 2008 to 10.3 percentage points in 2012 (**Figure 3a**).

Figure 1a presents the four-year graduation rates for grades 9-12 without exclusions by student group for classes of 2008–2012.

Figure 1a: HISD Four-Year Longitudinal Graduation Rates Without Exclusions (Grades 9-12), 2008-2012

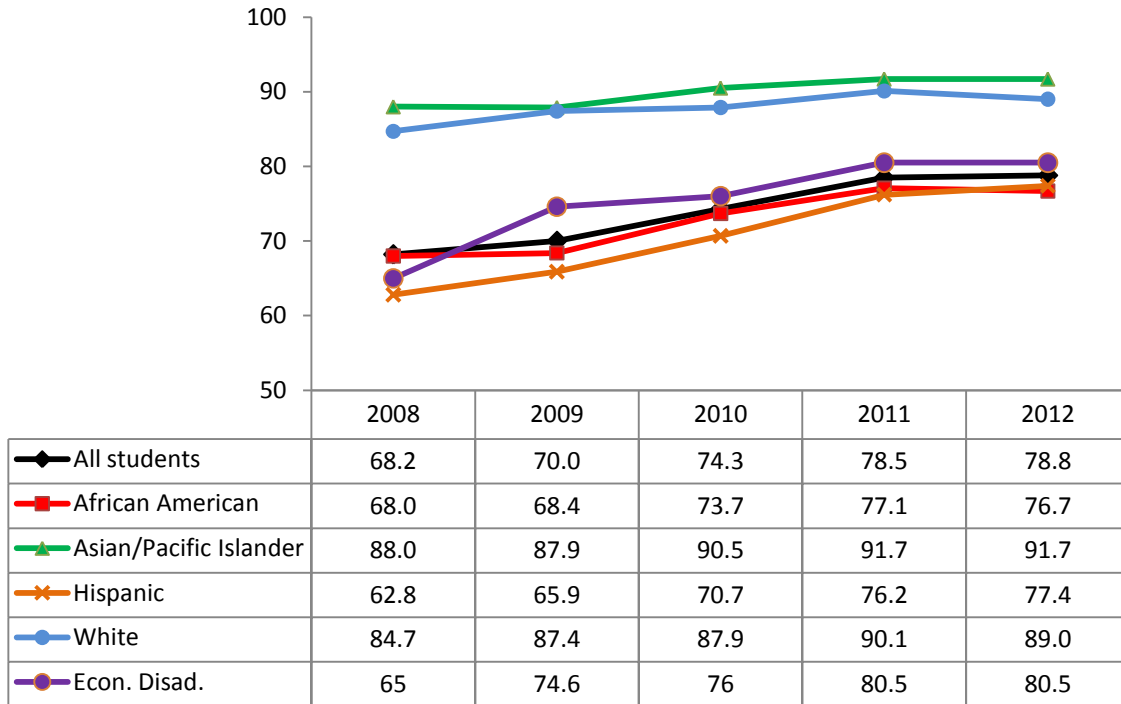


Figure 1b presents the four-year graduation rates for grades 9-12 with exclusions by student group for classes of 2011–2012.

Figure 1b: HISD Four-Year Longitudinal Graduation Rates With Exclusions (Grades 9-12), 2011-2012

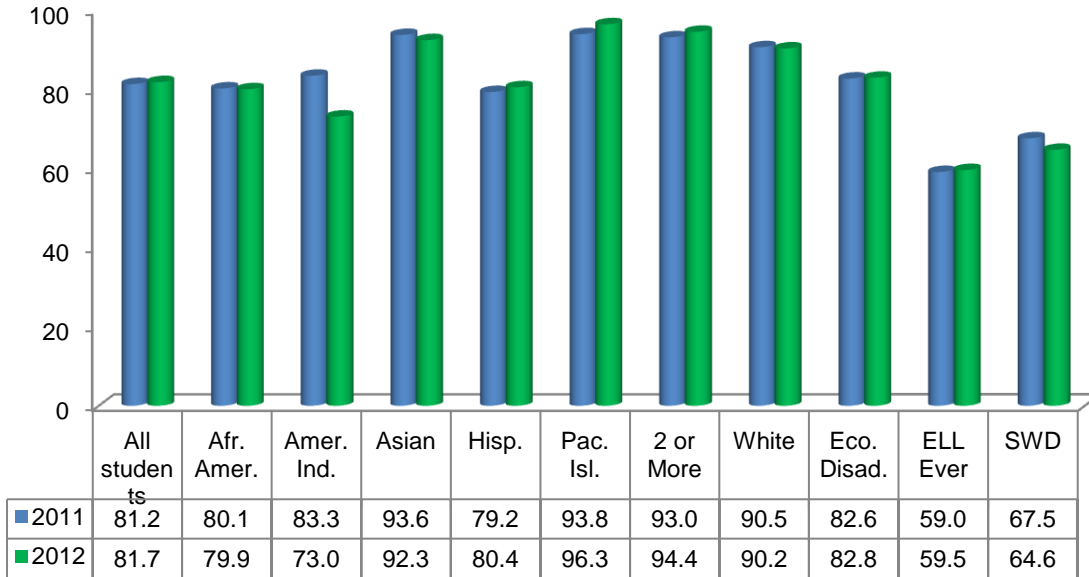


Figure 2a presents the district’s annual dropout rates in grades 7-8 by student group without exclusions, 2008-2012.

Figure 2a: HISD Annual Dropout Rates Without Exclusions (Grades 7-8), 2008-2012

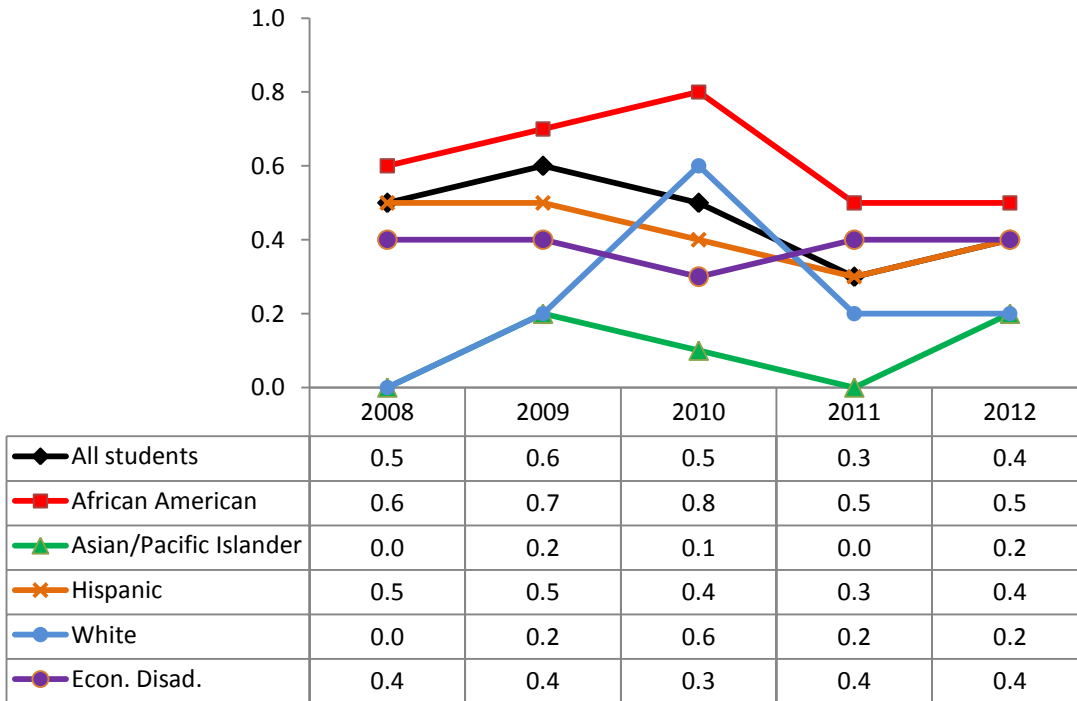


Figure 2b presents the district’s annual dropout rates in grades 7-8 by student group with, 2008-2012.

Figure 2b: HISD Annual Dropout Rates With Exclusions (Grades 7-8), 2011-2012

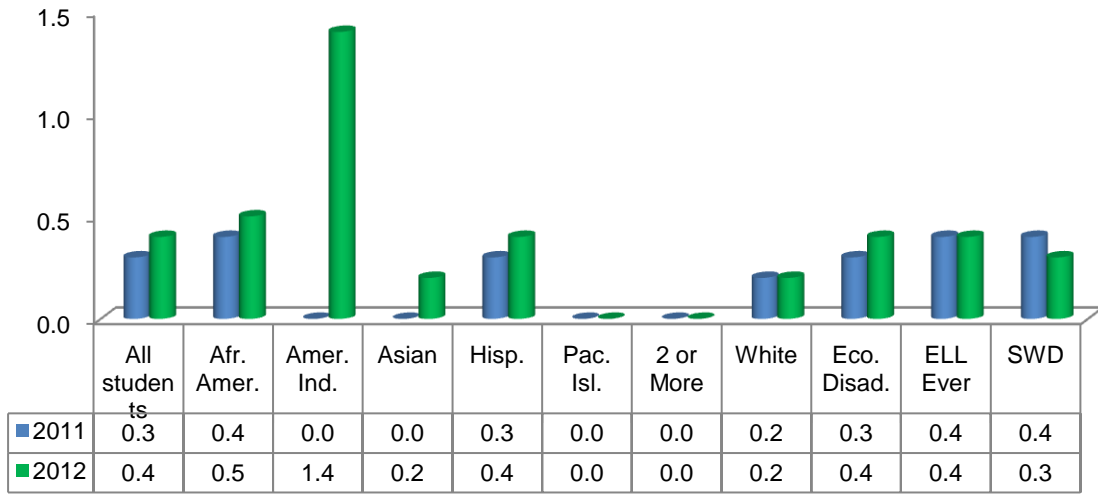


Figure 3a presents the district's four-year longitudinal dropout rates in grades 9-12 by student group, without exclusions, 2008-2012.

Figure 3a: HISD Four-Year Longitudinal Dropout Rates Without Exclusions (Grades 9-12), 2008-2012

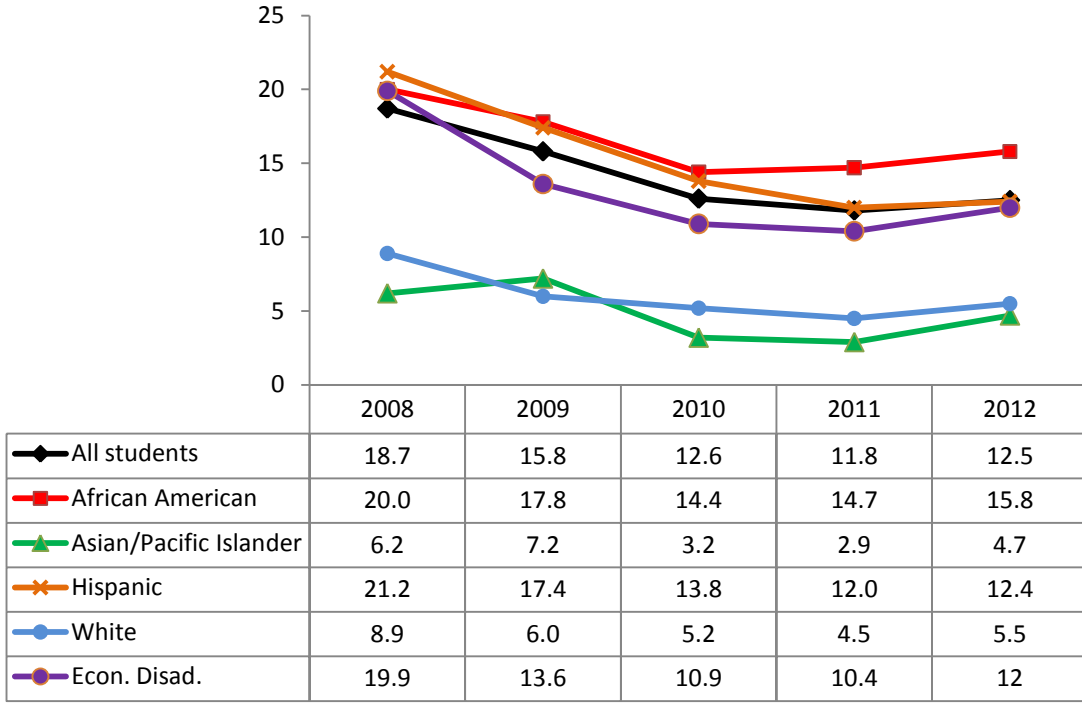
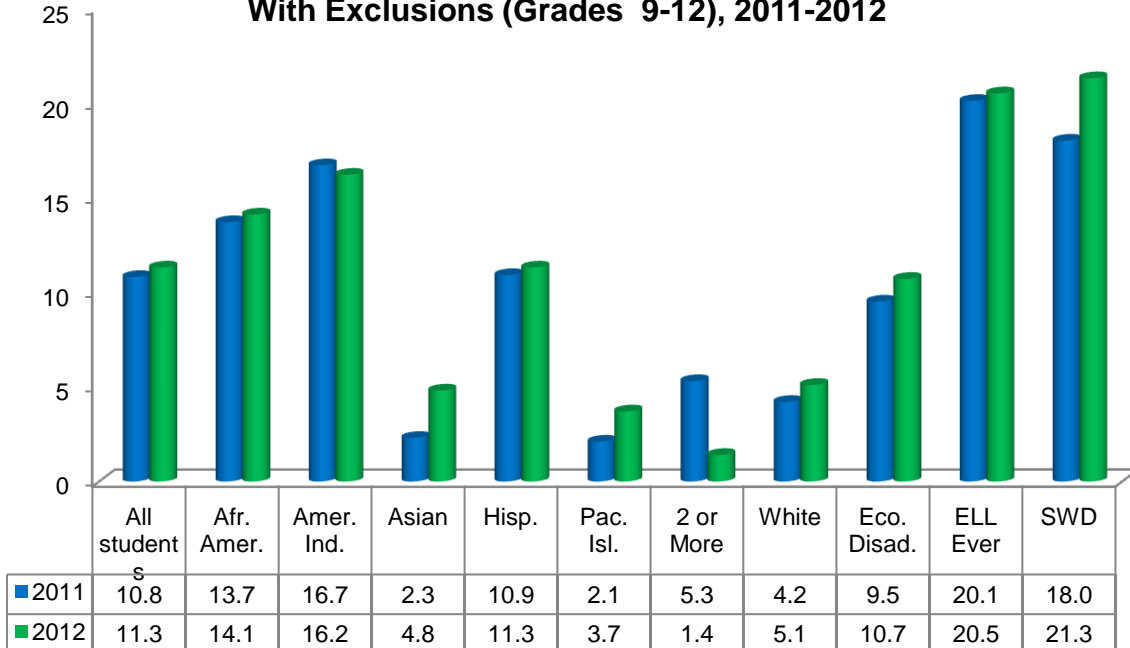


Figure 3b presents the district's four-year longitudinal dropout rates in grades 9-12 by student group, with exclusions, 2011-2012.

Figure 3b: HISD Four-Year Longitudinal Dropout Rates With Exclusions (Grades 9-12), 2011-2012



Attached are the appendices with campus-level results for graduation and dropout rates:

- **Appendix A** contains definitions of exclusions and dropouts.
- **Appendix B** presents district and campus 4-year graduation data for 2011 and 2012 without using state exclusions.
- **Appendix C** presents district and campus 4-year graduation data for 2011 and 2012 with state exclusions.
- **Appendix D** presents annual dropout rates in grades 7–8 for 2011 and 2012 by campus, with state exclusions.
- **Appendix E** presents district and campus 5-year graduation data for 2010 and 2011 without using state exclusions.
- **Appendix F** presents district and campus 5-year graduation data for 2011 with state exclusions.

Administrative Response:

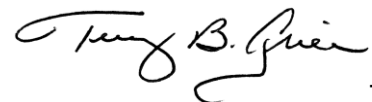
The following priorities have been established by the office of Dropout Prevention in order to increase the graduation rate and decrease the dropout rate:

- Develop and utilize the Dropout Prevention Early Warning (DPEW) report in Chancery to identify students at-risk of dropping out and developing actions plans to address the needs of identified students.
- Utilize the Student At-Risk Indicator Report to analyze factors related to student dropout and develop intervention programs based on these indicators.
- Analyze district data to develop a predictive model to help identify those indicators that are most likely to lead to students dropping out of school and graduating from school.
- Develop a dashboard to provide immediate and comprehensive analysis of information by campus and district based on the DPEW, SRI and State data sources.
- Design innovative drop out programs in HISD to include student tracking, relationship building, and resource services to meet the diverse academic and social needs of students.

In addition to these priorities, the office of Dropout Prevention will work with the Multilingual Department to implement the following:

- Provide an online reading program for high school ELL students to accelerate language and literacy development.
- Provide training to high school content teachers to address the academic and linguistic needs of ELL students.
- Provide individual academic reports for ELL students determined to be at-risk in order to create individual intervention plans.
- Provide all high schools with an annual ELL program report and TELPAS teacher reports to help inform the planning of ELL instruction.

Should you have any further questions, please contact my office or Carla Stevens in the Research and Accountability Department at (713) 556-6700.



TBG

Attachments

cc: Superintendent's Direct Reports
Chief School Officers
Jaime Castaneda

Richard Cruz
Lupita Hinojosa

Reasons for Excluded Records As Defined by the Texas Education Agency

According to TEA, in 2010–2011, a student who meets one or more of the following criteria is excluded from campus and district completion rate calculations used for accountability purposes:

- A student who is ordered by court to attend a high school equivalency certificate program but has not earned a high school equivalency certificate;
- A student previously reported to the state as a dropout;
- A student in attendance but who is not in membership for purposes of average daily attendance
(i.e., students for whom districts are not receiving state Foundation School Program [FSP] funds);
- A student whose initial enrollment in a school in the United States in Grades 7–12 was as an unschooled refugee or asylee as defined by TEC §39.027(a-1);
- A student who is in a district exclusively as a function of having been detained at a county facility but is otherwise not a student of the district in which the facility is located (TEC §39.054(f) and §39.055); and,
- A student who is incarcerated in a state jail or federal penitentiary as an adult or as a person certified to stand trial as an adult.

According to TEA, in 2010–2011, a student reported to have left school for any of the following reasons is **NOT** considered a dropout for accountability reasons:

- A student who **graduated**;
- A student who **died** while enrolled in school or during the summer break after completing the prior school year;
- A student who withdrew from/left school to **return to family's home country**;
- A student who withdrew from/left school to **enter college** and is working towards an Associate's or Bachelor's degree;
- A student who withdrew from/left school for **home schooling**;
- A student who was **removed by Child Protective Services (CPS)** and the district has not been informed of the student's current status or enrollment;
- A student was **expelled** under the provisions of TEC §37.007 and cannot return to school;
- A student who withdrew from/left school to **enroll in a private school** in Texas;
- A student who withdrew from/left school to **enroll in a public or private school outside of Texas**;
- A student was **withdrawn from school by the district** when the district discovered that the student was not a resident at the time of enrollment or had falsified enrollment information, proof of identification was not provided, or immunization records were not provided;
- A student who **graduated outside of Texas, returned to school, and left again**; or
- A student who received a **GED outside Texas**, returned to school to work toward the completion of a high school diploma, and then left; or student earned GED outside Texas after leaving Texas public schools;
- A student who **enrolled in a university HS Diploma Program**;
- A **mover** – TEA identified student in another Texas public school.

2011 and 2012 Four-Year Graduation Summary: No Exclusions (Grades 9 - 12)
(for comparison to 2010 and prior years)
Standard Education Program

| District/Campus | Group | Class of 2012 | | | | | Class of 2011 | | | | |
|-----------------|---------------|---------------|-----------------|----------------|----------|--------------|---------------|-----------------|----------------|----------|--------------|
| | | Class | Graduation Rate | Continuer Rate | GED Rate | Dropout Rate | Class | Graduation Rate | Continuer Rate | GED Rate | Dropout Rate |
| HISD | All students | 11,461 | 78.8 | 8.0 | 0.7 | 12.5 | 11,561 | 78.5 | 9.1 | 0.6 | 11.8 |
| | Afr. Amer. | 3,452 | 76.7 | 6.8 | 0.7 | 15.8 | 3,746 | 77.1 | 7.5 | 0.6 | 14.7 |
| | Amer. Ind. | 38 | 71.1 | 13.2 | 0.0 | 15.8 | 21 | 71.4 | 14.3 | 0.0 | 14.3 |
| | Asian | 416 | 91.6 | 3.6 | 0.0 | 4.8 | 395 | 92.4 | 5.1 | 0.3 | 2.3 |
| | Hispanic | 6,420 | 77.4 | 9.7 | 0.5 | 12.4 | 6,212 | 76.2 | 11.3 | 0.6 | 12.0 |
| | Pac. Isl. | 28 | 92.9 | 3.6 | 0.0 | 3.6 | 49 | 91.8 | 6.1 | 0.0 | 2.0 |
| | Two or More | 73 | 91.8 | 6.8 | 0.0 | 1.4 | 58 | 91.4 | 1.7 | 0.0 | 6.9 |
| | White | 1,030 | 89.0 | 3.5 | 1.9 | 5.5 | 1,076 | 90.1 | 4.1 | 1.4 | 4.5 |
| | Other | 4 | * | * | * | * | 4 | * | * | * | * |
| | Econ. Disadv. | 7,846 | 80.5 | 7.1 | 0.4 | 12.0 | 7,688 | 80.5 | 8.6 | 0.5 | 10.4 |
| | ELL Ever | 1,385 | 54.6 | 24.0 | 0.0 | 21.4 | 1,473 | 54.4 | 25.2 | 0.2 | 20.2 |
| | SWD | 1,184 | 61.1 | 14.5 | 0.3 | 24.1 | 1,137 | 64.6 | 15.0 | 0.6 | 19.8 |
| Austin HS | All students | 418 | 74.6 | 11.5 | 0.5 | 13.4 | 468 | 79.1 | 12.0 | 0.2 | 8.8 |
| | Afr. Amer. | 16 | 81.3 | 0.0 | 0.0 | 18.8 | 16 | 87.5 | 6.3 | 0.0 | 6.3 |
| | Amer. Ind. | 2 | * | * | * | * | 1 | * | * | * | * |
| | Asian | | | | | | 1 | * | * | * | * |
| | Hispanic | 397 | 74.3 | 12.1 | 0.5 | 13.1 | 446 | 78.5 | 12.3 | 0.2 | 9.0 |
| | White | 3 | * | * | * | * | 4 | * | * | * | * |
| | Econ. Disadv. | 320 | 80.0 | 5.6 | 0.6 | 13.8 | 399 | 84.5 | 7.3 | 0.3 | 8.0 |
| | ELL Ever | 97 | 58.8 | 21.6 | 0.0 | 19.6 | 104 | 61.5 | 21.2 | 0.0 | 17.3 |
| | SWD | 39 | 41.0 | 17.9 | 0.0 | 41.0 | 40 | 75.0 | 20.0 | 0.0 | 5.0 |
| Bellaire HS | All students | 874 | 89.9 | 5.0 | 0.5 | 4.6 | 783 | 88.6 | 5.6 | 0.5 | 5.2 |
| | Afr. Amer. | 162 | 91.4 | 4.9 | 0.0 | 3.7 | 103 | 84.5 | 3.9 | 1.9 | 9.7 |
| | Amer. Ind. | 3 | * | * | * | * | 3 | * | * | * | * |
| | Asian | 132 | 95.5 | 3.0 | 0.0 | 1.5 | 155 | 96.1 | 2.6 | 0.6 | 0.6 |
| | Hispanic | 299 | 81.9 | 9.0 | 0.3 | 8.7 | 230 | 78.7 | 12.6 | 0.0 | 8.7 |
| | Pac. Isl. | | | | | | 2 | * | * | * | * |
| | Two or More | 28 | 96.4 | 3.6 | 0.0 | 0.0 | 24 | 91.7 | 0.0 | 0.0 | 8.3 |
| | White | 247 | 96.0 | 1.6 | 1.2 | 1.2 | 266 | 94.0 | 2.6 | 0.4 | 3.0 |
| | Other | 3 | * | * | * | * | | | | | |
| | Econ. Disadv. | 330 | 87.6 | 6.1 | 0.0 | 6.4 | 251 | 80.5 | 11.2 | 0.8 | 7.6 |
| | ELL Ever | 72 | 63.9 | 20.8 | 0.0 | 15.3 | 53 | 52.8 | 35.8 | 0.0 | 11.3 |
| SWD | 42 | 73.8 | 14.3 | 0.0 | 11.9 | 36 | 75.0 | 13.9 | 2.8 | 8.3 | |
| Carnegie HS | All students | 84 | 100.0 | 0.0 | 0.0 | 0.0 | 80 | 100.0 | 0.0 | 0.0 | 0.0 |
| | Afr. Amer. | 19 | 100.0 | 0.0 | 0.0 | 0.0 | 10 | 100.0 | 0.0 | 0.0 | 0.0 |
| | Asian | 8 | * | * | * | * | 7 | * | * | * | * |
| | Hispanic | 21 | 100.0 | 0.0 | 0.0 | 0.0 | 20 | 100.0 | 0.0 | 0.0 | 0.0 |
| | White | 36 | 100.0 | 0.0 | 0.0 | 0.0 | 43 | 100.0 | 0.0 | 0.0 | 0.0 |
| | Econ. Disadv. | 26 | 100.0 | 0.0 | 0.0 | 0.0 | 11 | 100.0 | 0.0 | 0.0 | 0.0 |
| | ELL Ever | 1 | * | * | * | * | | | | | |
| | SWD | | | | | | 3 | * | * | * | * |

* Masked: n<10 Blanks: no data

2011 and 2012 Four-Year Graduation Summary: No Exclusions (Grades 9 - 12)
(for comparison to 2010 and prior years)
Standard Education Program

| District/Campus | Group | Class of 2012 | | | | | Class of 2011 | | | | |
|-----------------------|---------------|---------------|-----------------|----------------|----------|--------------|---------------|-----------------|----------------|----------|--------------|
| | | Class | Graduation Rate | Continuer Rate | GED Rate | Dropout Rate | Class | Graduation Rate | Continuer Rate | GED Rate | Dropout Rate |
| Challenge HS | All students | 100 | 96.0 | 3.0 | 0.0 | 1.0 | 84 | 82.1 | 15.5 | 0.0 | 2.4 |
| | Afr. Amer. | 23 | 100.0 | 0.0 | 0.0 | 0.0 | 16 | 100.0 | 0.0 | 0.0 | 0.0 |
| | Asian | 3 | * | * | * | * | 2 | * | * | * | * |
| | Hispanic | 61 | 95.1 | 3.3 | 0.0 | 1.6 | 48 | 77.1 | 18.8 | 0.0 | 4.2 |
| | Two or More | 2 | * | * | * | * | 1 | * | * | * | * |
| | White | 11 | 90.9 | 9.1 | 0.0 | 0.0 | 17 | 76.5 | 23.5 | 0.0 | 0.0 |
| | Econ. Disadv. | 62 | 98.4 | 1.6 | 0.0 | 0.0 | 48 | 81.3 | 18.8 | 0.0 | 0.0 |
| | ELL Ever | | | | | | 1 | * | * | * | * |
| | SWD | | | | | | 2 | * | * | * | * |
| Chavez HS | All students | 629 | 85.1 | 3.5 | 0.3 | 11.1 | 613 | 81.6 | 5.9 | 0.0 | 12.6 |
| | Afr. Amer. | 90 | 90.0 | 1.1 | 0.0 | 8.9 | 81 | 88.9 | 3.7 | 0.0 | 7.4 |
| | Asian | 28 | 85.7 | 3.6 | 0.0 | 10.7 | 19 | 78.9 | 5.3 | 0.0 | 15.8 |
| | Hispanic | 502 | 84.1 | 4.0 | 0.4 | 11.6 | 500 | 80.6 | 6.4 | 0.0 | 13.0 |
| | Two or More | | | | | | 1 | * | * | * | * |
| | White | 9 | * | * | * | * | 10 | 80.0 | 0.0 | 0.0 | 20.0 |
| | Other | | | | | | 2 | * | * | * | * |
| | Econ. Disadv. | 470 | 88.3 | 3.0 | 0.0 | 8.7 | 491 | 86.2 | 4.7 | 0.0 | 9.2 |
| | ELL Ever | 81 | 65.4 | 8.6 | 0.0 | 25.9 | 100 | 65.0 | 13.0 | 0.0 | 22.0 |
| SWD | 62 | 71.0 | 8.1 | 0.0 | 21.0 | 46 | 69.6 | 13.0 | 0.0 | 17.4 | |
| Davis HS | All students | 345 | 81.4 | 15.4 | 0.6 | 2.6 | 381 | 86.6 | 10.8 | 0.3 | 2.4 |
| | Afr. Amer. | 35 | 71.4 | 28.6 | 0.0 | 0.0 | 27 | 85.2 | 11.1 | 0.0 | 3.7 |
| | Amer. Ind. | | | | | | 1 | * | * | * | * |
| | Hispanic | 307 | 82.4 | 14.0 | 0.7 | 2.9 | 351 | 86.6 | 10.8 | 0.3 | 2.3 |
| | White | 3 | * | * | * | * | 2 | * | * | * | * |
| | Econ. Disadv. | 316 | 82.6 | 14.6 | 0.6 | 2.2 | 347 | 88.8 | 9.5 | 0.3 | 1.4 |
| | ELL Ever | 48 | 58.3 | 33.3 | 0.0 | 8.3 | 59 | 76.3 | 23.7 | 0.0 | 0.0 |
| | SWD | 53 | 67.9 | 22.6 | 0.0 | 9.4 | 46 | 84.8 | 10.9 | 0.0 | 4.3 |
| DeBakey HS | All students | 191 | 100.0 | 0.0 | 0.0 | 0.0 | 210 | 100.0 | 0.0 | 0.0 | 0.0 |
| | Afr. Amer. | 55 | 100.0 | 0.0 | 0.0 | 0.0 | 48 | 100.0 | 0.0 | 0.0 | 0.0 |
| | Asian | 69 | 100.0 | 0.0 | 0.0 | 0.0 | 83 | 100.0 | 0.0 | 0.0 | 0.0 |
| | Hispanic | 55 | 100.0 | 0.0 | 0.0 | 0.0 | 61 | 100.0 | 0.0 | 0.0 | 0.0 |
| | Pac. Isl. | | | | | | 1 | * | * | * | * |
| | Two or More | 1 | * | * | * | * | 2 | * | * | * | * |
| | White | 11 | 100.0 | 0.0 | 0.0 | 0.0 | 15 | 100.0 | 0.0 | 0.0 | 0.0 |
| | Econ. Disadv. | 94 | 100.0 | 0.0 | 0.0 | 0.0 | 107 | 100.0 | 0.0 | 0.0 | 0.0 |
| East Early College HS | All students | 95 | 93.7 | 6.3 | 0.0 | 0.0 | 90 | 86.7 | 13.3 | 0.0 | 0.0 |
| | Afr. Amer. | 5 | * | * | * | * | 5 | * | * | * | * |
| | Asian | 3 | * | * | * | * | 5 | * | * | * | * |
| | Hispanic | 85 | 92.9 | 7.1 | 0.0 | 0.0 | 79 | 87.3 | 12.7 | 0.0 | 0.0 |
| | White | 2 | * | * | * | * | 1 | * | * | * | * |
| | Econ. Disadv. | 79 | 92.4 | 7.6 | 0.0 | 0.0 | 80 | 86.3 | 13.8 | 0.0 | 0.0 |
| | ELL Ever | | | | | | 2 | * | * | * | * |

* Masked: n<10 Blanks: no data

2011 and 2012 Four-Year Graduation Summary: No Exclusions (Grades 9 - 12)
(for comparison to 2010 and prior years)
Standard Education Program

| District/Campus | Group | Class of 2012 | | | | | Class of 2011 | | | | |
|---|---------------|---------------|-----------------|----------------|----------|--------------|---------------|-----------------|----------------|----------|--------------|
| | | Class | Graduation Rate | Continuer Rate | GED Rate | Dropout Rate | Class | Graduation Rate | Continuer Rate | GED Rate | Dropout Rate |
| Eastwood Academy | All students | 94 | 98.9 | 0.0 | 0.0 | 1.1 | 63 | 100.0 | 0.0 | 0.0 | 0.0 |
| | Afr. Amer. | | | | | | 2 | * | * | * | * |
| | Asian | 2 | * | * | * | * | 1 | * | * | * | * |
| | Hispanic | 91 | 98.9 | 0.0 | 0.0 | 1.1 | 60 | 100.0 | 0.0 | 0.0 | 0.0 |
| | White | 1 | * | * | * | * | | | | | |
| | Econ. Disadv. | 80 | 98.8 | 0.0 | 0.0 | 1.3 | 45 | 100.0 | 0.0 | 0.0 | 0.0 |
| | ELL Ever | 1 | * | * | * | * | 1 | * | * | * | * |
| Energized HS SE (321) | All students | 47 | 97.9 | 0.0 | 0.0 | 2.1 | | | | | |
| | Afr. Amer. | 25 | 96.0 | 0.0 | 0.0 | 4.0 | | | | | |
| | Asian | 4 | * | * | * | * | | | | | |
| | Hispanic | 16 | 100.0 | 0.0 | 0.0 | 0.0 | | | | | |
| | White | 2 | * | * | * | * | | | | | |
| | Econ. Disadv. | 26 | 100.0 | 0.0 | 0.0 | 0.0 | | | | | |
| | SWD | 2 | * | * | * | * | | | | | |
| Furr HS | All students | 164 | 86.0 | 11.0 | 0.0 | 3.0 | 192 | 89.1 | 6.8 | 0.5 | 3.6 |
| | Afr. Amer. | 25 | 88.0 | 4.0 | 0.0 | 8.0 | 46 | 82.6 | 10.9 | 0.0 | 6.5 |
| | Amer. Ind. | 1 | * | * | * | * | | | | | |
| | Asian | 1 | * | * | * | * | | | | | |
| | Hispanic | 130 | 86.2 | 12.3 | 0.0 | 1.5 | 141 | 90.8 | 5.7 | 0.7 | 2.8 |
| | White | 7 | * | * | * | * | 5 | * | * | * | * |
| | Econ. Disadv. | 141 | 87.2 | 10.6 | 0.0 | 2.1 | 177 | 90.4 | 6.2 | 0.6 | 2.8 |
| | ELL Ever | 20 | 30.0 | 60.0 | 0.0 | 10.0 | 36 | 77.8 | 16.7 | 0.0 | 5.6 |
| SWD | 10 | 60.0 | 40.0 | 0.0 | 0.0 | 33 | 84.8 | 9.1 | 0.0 | 6.1 | |
| Houston Academy for International Studies | All students | 83 | 91.6 | 8.4 | 0.0 | 0.0 | 66 | 92.4 | 7.6 | 0.0 | 0.0 |
| | Afr. Amer. | 38 | 94.7 | 5.3 | 0.0 | 0.0 | 29 | 89.7 | 10.3 | 0.0 | 0.0 |
| | Asian | | | | | | 1 | * | * | * | * |
| | Hispanic | 40 | 92.5 | 7.5 | 0.0 | 0.0 | 32 | 96.9 | 3.1 | 0.0 | 0.0 |
| | Pac. Isl. | 1 | * | * | * | * | 1 | * | * | * | * |
| | White | 4 | * | * | * | * | 3 | * | * | * | * |
| | Econ. Disadv. | 53 | 94.3 | 5.7 | 0.0 | 0.0 | 46 | 95.7 | 4.3 | 0.0 | 0.0 |
| | ELL Ever | | | | | | 3 | * | * | * | * |
| SWD | 3 | * | * | * | * | 2 | * | * | * | * | |
| Houston MST (005 and 310) | All students | 589 | 73.9 | 11.4 | 0.7 | 14.1 | 559 | 75.0 | 17.1 | 0.8 | 12.7 |
| | Afr. Amer. | 28 | 71.4 | 3.6 | 0.0 | 25.0 | 28 | 61.5 | 15.4 | 0.0 | 28.6 |
| | Asian | 2 | * | * | * | * | | | | | |
| | Hispanic | 549 | 73.8 | 11.8 | 0.7 | 13.7 | 519 | 75.9 | 17.2 | 0.8 | 10.2 |
| | White | 10 | 80.0 | 10.0 | 0.0 | 10.0 | 12 | 70.0 | 20.0 | 0.0 | 25.0 |
| | Econ. Disadv. | 529 | 77.3 | 9.1 | 0.6 | 13.0 | 473 | 80.2 | 12.9 | 0.7 | 10.8 |
| | ELL Ever | 135 | 55.6 | 23.7 | 0.0 | 20.7 | 134 | 65.9 | 27.6 | 0.0 | 14.2 |
| | SWD | 82 | 65.9 | 17.1 | 0.0 | 17.1 | 56 | 65.4 | 23.1 | 1.9 | 16.1 |

* Masked: n<10 Blanks: no data

2011 and 2012 Four-Year Graduation Summary: No Exclusions (Grades 9 - 12)
(for comparison to 2010 and prior years)
Standard Education Program

| District/Campus | Group | Class of 2012 | | | | | Class of 2011 | | | | |
|-----------------|---------------|---------------|-----------------|----------------|----------|--------------|---------------|-----------------|----------------|----------|--------------|
| | | Class | Graduation Rate | Continuer Rate | GED Rate | Dropout Rate | Class | Graduation Rate | Continuer Rate | GED Rate | Dropout Rate |
| HSLECJ | All students | 123 | 98.4 | 0.8 | 0.0 | 0.8 | 121 | 98.3 | 0.8 | 0.0 | 0.8 |
| | Afr. Amer. | 27 | 100.0 | 0.0 | 0.0 | 0.0 | 30 | 100.0 | 0.0 | 0.0 | 0.0 |
| | Hispanic | 94 | 97.9 | 1.1 | 0.0 | 1.1 | 85 | 98.8 | 1.2 | 0.0 | 0.0 |
| | Two or More | | | | | | 2 | * | * | * | * |
| | White | 2 | * | * | * | * | 4 | * | * | * | * |
| | Econ. Disadv. | 101 | 98.0 | 1.0 | 0.0 | 1.0 | 76 | 98.7 | 0.0 | 0.0 | 1.3 |
| | SWD | | | | | | 2 | * | * | * | * |
| HSPVA | All students | 151 | 100.0 | 0.0 | 0.0 | 0.0 | 151 | 100.0 | 0.0 | 0.0 | 0.0 |
| | Afr. Amer. | 28 | 100.0 | 0.0 | 0.0 | 0.0 | 31 | 100.0 | 0.0 | 0.0 | 0.0 |
| | Amer. Ind. | 1 | * | * | * | * | | | | | |
| | Asian | 6 | * | * | * | * | 3 | * | * | * | * |
| | Hispanic | 35 | 100.0 | 0.0 | 0.0 | 0.0 | 37 | 100.0 | 0.0 | 0.0 | 0.0 |
| | Two or More | 4 | * | * | * | * | 1 | * | * | * | * |
| | White | 77 | 100.0 | 0.0 | 0.0 | 0.0 | 79 | 100.0 | 0.0 | 0.0 | 0.0 |
| | Econ. Disadv. | 28 | 100.0 | 0.0 | 0.0 | 0.0 | 32 | 100.0 | 0.0 | 0.0 | 0.0 |
| | ELL Ever | | | | | | 2 | * | * | * | * |
| | SWD | 4 | * | * | * | * | 1 | * | * | * | * |
| Jones HS | All students | 154 | 79.2 | 4.5 | 1.3 | 14.9 | 162 | 69.1 | 9.9 | 0.0 | 21.0 |
| | Afr. Amer. | 119 | 79.8 | 4.2 | 1.7 | 14.3 | 116 | 73.3 | 9.5 | 0.0 | 17.2 |
| | Hispanic | 35 | 77.1 | 5.7 | 0.0 | 17.1 | 45 | 57.8 | 11.1 | 0.0 | 31.1 |
| | Pac. Isl. | | | | | | 1 | * | * | * | * |
| | Econ. Disadv. | 106 | 80.2 | 2.8 | 0.9 | 16.0 | 120 | 73.3 | 8.3 | 0.0 | 18.3 |
| | ELL Ever | 5 | * | * | * | * | 19 | 36.8 | 21.1 | 0.0 | 42.1 |
| | SWD | 39 | 66.7 | 10.3 | 0.0 | 23.1 | 27 | 63.0 | 11.1 | 0.0 | 25.9 |
| Jordan HS | All students | 231 | 94.8 | 3.0 | 0.0 | 2.2 | 291 | 97.3 | 1.7 | 0.0 | 1.0 |
| | Afr. Amer. | 108 | 95.4 | 2.8 | 0.0 | 1.9 | 182 | 96.7 | 1.6 | 0.0 | 1.6 |
| | Asian | 1 | * | * | * | * | 1 | * | * | * | * |
| | Hispanic | 118 | 94.1 | 3.4 | 0.0 | 2.5 | 106 | 98.1 | 1.9 | 0.0 | 0.0 |
| | White | 4 | * | * | * | * | 2 | * | * | * | * |
| | Econ. Disadv. | 194 | 95.9 | 1.5 | 0.0 | 2.6 | 220 | 97.7 | 1.4 | 0.0 | 0.9 |
| | ELL Ever | 14 | 92.9 | 7.1 | 0.0 | 0.0 | 12 | 100.0 | 0.0 | 0.0 | 0.0 |
| SWD | 31 | 100.0 | 0.0 | 0.0 | 0.0 | 42 | 97.6 | 2.4 | 0.0 | 0.0 | |
| Kashmere HS | All students | 123 | 66.7 | 7.3 | 0.0 | 26.0 | 130 | 73.8 | 10.8 | 0.8 | 14.6 |
| | Afr. Amer. | 103 | 70.9 | 4.9 | 0.0 | 24.3 | 115 | 76.5 | 8.7 | 0.0 | 14.8 |
| | Amer. Ind. | 1 | * | * | * | * | | | | | |
| | Hispanic | 19 | 42.1 | 21.1 | 0.0 | 36.8 | 14 | 50.0 | 28.6 | 7.1 | 14.3 |
| | White | | | | | | 1 | * | * | * | * |
| | Econ. Disadv. | 89 | 74.2 | 4.5 | 0.0 | 21.3 | 95 | 76.8 | 10.5 | 1.1 | 11.6 |
| | ELL Ever | 8 | * | * | * | * | 4 | * | * | * | * |
| | SWD | 29 | 51.7 | 3.4 | 0.0 | 44.8 | 37 | 86.5 | 8.1 | 0.0 | 5.4 |

* Masked: n<10 Blanks: no data

2011 and 2012 Four-Year Graduation Summary: No Exclusions (Grades 9 - 12)
(for comparison to 2010 and prior years)
Standard Education Program

| District/Campus | Group | Class of 2012 | | | | | Class of 2011 | | | | |
|-----------------|---------------|---------------|-----------------|----------------|----------|--------------|---------------|-----------------|----------------|----------|--------------|
| | | Class | Graduation Rate | Continuer Rate | GED Rate | Dropout Rate | Class | Graduation Rate | Continuer Rate | GED Rate | Dropout Rate |
| Lamar HS | All students | 621 | 91.0 | 4.8 | 1.0 | 3.2 | 770 | 92.7 | 4.2 | 0.1 | 3.0 |
| | Afr. Amer. | 139 | 92.8 | 5.0 | 0.7 | 1.4 | 214 | 96.7 | 1.4 | 0.0 | 1.9 |
| | Amer. Ind. | | | | | | 2 | * | * | * | * |
| | Asian | 18 | 94.4 | 0.0 | 0.0 | 5.6 | 3 | * | * | * | * |
| | Hispanic | 208 | 88.0 | 7.2 | 0.0 | 4.8 | 246 | 88.2 | 8.5 | 0.0 | 3.3 |
| | Pac. Isl. | 21 | 100.0 | 0.0 | 0.0 | 0.0 | 28 | 96.4 | 3.6 | 0.0 | 0.0 |
| | Two or More | 7 | * | * | * | * | 2 | * | * | * | * |
| | White | 228 | 91.2 | 3.5 | 2.2 | 3.1 | 275 | 93.5 | 2.5 | 0.4 | 3.6 |
| | Econ. Disadv. | 249 | 90.4 | 4.4 | 0.8 | 4.4 | 329 | 91.2 | 5.2 | 0.0 | 3.6 |
| | ELL Ever | 42 | 64.3 | 21.4 | 0.0 | 14.3 | 35 | 62.9 | 28.6 | 0.0 | 8.6 |
| | SWD | 31 | 64.5 | 19.4 | 3.2 | 12.9 | 36 | 72.2 | 22.2 | 0.0 | 5.6 |
| Lee HS | All students | 340 | 80.0 | 10.3 | 0.3 | 9.4 | 364 | 62.6 | 20.3 | 0.8 | 16.2 |
| | Afr. Amer. | 36 | 77.8 | 13.9 | 0.0 | 8.3 | 55 | 67.3 | 18.2 | 3.6 | 10.9 |
| | Amer. Ind. | 1 | * | * | * | * | 1 | * | * | * | * |
| | Asian | 20 | 75.0 | 15.0 | 0.0 | 10.0 | 20 | 90.0 | 10.0 | 0.0 | 0.0 |
| | Hispanic | 275 | 80.4 | 9.8 | 0.4 | 9.5 | 270 | 58.5 | 22.6 | 0.0 | 18.9 |
| | Pac. Isl. | | | | | | 2 | * | * | * | * |
| | Two or More | | | | | | 1 | * | * | * | * |
| | White | 8 | * | * | * | * | 15 | 73.3 | 6.7 | 6.7 | 13.3 |
| | Econ. Disadv. | 287 | 87.1 | 5.9 | 0.3 | 6.6 | 294 | 69.7 | 15.6 | 0.7 | 13.9 |
| | ELL Ever | 135 | 71.1 | 15.6 | 0.0 | 13.3 | 173 | 47.4 | 31.2 | 0.0 | 21.4 |
| | SWD | 28 | 67.9 | 10.7 | 0.0 | 21.4 | 36 | 61.1 | 22.2 | 0.0 | 16.7 |
| Madison HS | All students | 531 | 78.2 | 9.6 | 0.4 | 11.9 | 551 | 82.8 | 6.2 | 0.5 | 10.5 |
| | Afr. Amer. | 263 | 81.7 | 7.6 | 0.8 | 9.9 | 279 | 85.3 | 4.7 | 1.1 | 9.0 |
| | Amer. Ind. | 5 | * | * | * | * | 1 | * | * | * | * |
| | Asian | 2 | * | * | * | * | 3 | * | * | * | * |
| | Hispanic | 254 | 74.4 | 11.4 | 0.0 | 14.2 | 262 | 79.8 | 8.0 | 0.0 | 12.2 |
| | Pac. Isl. | | | | | | 1 | * | * | * | * |
| | Two or More | 5 | * | * | * | * | 4 | * | * | * | * |
| | White | 2 | * | * | * | * | 1 | * | * | * | * |
| | Econ. Disadv. | 432 | 80.1 | 8.3 | 0.0 | 11.6 | 404 | 86.9 | 5.2 | 0.2 | 7.7 |
| | ELL Ever | 55 | 52.7 | 18.2 | 0.0 | 29.1 | 76 | 67.1 | 13.2 | 0.0 | 19.7 |
| | SWD | 79 | 58.2 | 15.2 | 0.0 | 26.6 | 68 | 70.6 | 11.8 | 0.0 | 17.6 |
| Milby HS | All students | 518 | 79.3 | 9.1 | 0.2 | 11.4 | 548 | 81.9 | 6.4 | 1.3 | 10.4 |
| | Afr. Amer. | 17 | 88.2 | 5.9 | 0.0 | 5.9 | 15 | 80.0 | 6.7 | 0.0 | 13.3 |
| | Amer. Ind. | 2 | * | * | * | * | 3 | * | * | * | * |
| | Asian | 2 | * | * | * | * | 4 | * | * | * | * |
| | Hispanic | 493 | 78.7 | 9.3 | 0.2 | 11.8 | 522 | 82.0 | 6.3 | 1.3 | 10.3 |
| | Two or More | 1 | * | * | * | * | | | | | |
| | White | 3 | * | * | * | * | 4 | * | * | * | * |
| | Econ. Disadv. | 393 | 83.7 | 6.4 | 0.0 | 9.9 | 419 | 85.7 | 4.5 | 1.4 | 8.4 |
| | ELL Ever | 93 | 54.8 | 18.3 | 0.0 | 26.9 | 98 | 65.3 | 13.3 | 1.0 | 20.4 |
| | SWD | 40 | 70.0 | 15.0 | 0.0 | 15.0 | 50 | 74.0 | 8.0 | 0.0 | 18.0 |

* Masked: n<10 Blanks: no data

2011 and 2012 Four-Year Graduation Summary: No Exclusions (Grades 9 - 12)
(for comparison to 2010 and prior years)
Standard Education Program

| District/Campus | Group | Class of 2012 | | | | | Class of 2011 | | | | |
|----------------------------------|---------------|---------------|-----------------|----------------|----------|--------------|---------------|-----------------|----------------|----------|--------------|
| | | Class | Graduation Rate | Continuer Rate | GED Rate | Dropout Rate | Class | Graduation Rate | Continuer Rate | GED Rate | Dropout Rate |
| Mount Carmel Academy | All students | 79 | 97.5 | 1.3 | 0.0 | 1.3 | 53 | 98.1 | 1.9 | 0.0 | 0.0 |
| | Afr. Amer. | 13 | 100.0 | 0.0 | 0.0 | 0.0 | 9 | * | * | * | * |
| | Asian | 2 | * | * | * | * | | | | | |
| | Hispanic | 54 | 96.3 | 1.9 | 0.0 | 1.9 | 35 | 97.1 | 2.9 | 0.0 | 0.0 |
| | Two or More | 7 | * | * | * | * | 2 | * | * | * | * |
| | White | 3 | * | * | * | * | 7 | * | * | * | * |
| | Econ. Disadv. | 44 | 97.7 | 2.3 | 0.0 | 0.0 | 26 | 100.0 | 0.0 | 0.0 | 0.0 |
| | ELL Ever | 3 | * | * | * | * | | | | | |
| | SWD | 2 | * | * | * | * | | | | | |
| Ninth Grade Prep. Acad. (closed) | All students | 16 | 0.0 | 0.0 | 0.0 | 100.0 | 9 | * | * | * | * |
| | Afr. Amer. | 2 | * | * | * | * | 1 | * | * | * | * |
| | Hispanic | 14 | 0.0 | 0.0 | 0.0 | 100.0 | 8 | * | * | * | * |
| | Econ. Disadv. | 10 | 0.0 | 0.0 | 0.0 | 100.0 | 8 | * | * | * | * |
| | ELL Ever | 1 | * | * | * | * | 2 | * | * | * | * |
| | SWD | 2 | * | * | * | * | 2 | * | * | * | * |
| North Houston Early College HS | All students | 86 | 95.3 | 2.3 | 0.0 | 2.3 | | | | | |
| | Afr. Amer. | 17 | 100.0 | 0.0 | 0.0 | 0.0 | | | | | |
| | Hispanic | 65 | 93.8 | 3.1 | 0.0 | 3.1 | | | | | |
| | White | 4 | * | * | * | * | | | | | |
| | Econ. Disadv. | 73 | 97.3 | 0.0 | 0.0 | 2.7 | | | | | |
| | ELL Ever | 2 | * | * | * | * | | | | | |
| | SWD | 1 | * | * | * | * | | | | | |
| Reagan HS | All students | 450 | 93.3 | 1.8 | 0.7 | 4.2 | 378 | 91.0 | 3.4 | 0.5 | 5.0 |
| | Afr. Amer. | 47 | 97.9 | 0.0 | 0.0 | 2.1 | 25 | 96.0 | 0.0 | 0.0 | 4.0 |
| | Asian | 1 | * | * | * | * | 2 | * | * | * | * |
| | Hispanic | 381 | 92.7 | 1.8 | 0.8 | 4.7 | 337 | 90.8 | 3.6 | 0.3 | 5.3 |
| | Two or More | 3 | * | * | * | * | 2 | * | * | * | * |
| | White | 18 | 100.0 | 0.0 | 0.0 | 0.0 | 12 | 91.7 | 0.0 | 8.3 | 0.0 |
| | Econ. Disadv. | 353 | 94.3 | 1.1 | 0.3 | 4.2 | 288 | 93.1 | 3.1 | 0.3 | 3.5 |
| | ELL Ever | 32 | 71.9 | 9.4 | 0.0 | 18.8 | 33 | 75.8 | 6.1 | 0.0 | 18.2 |
| | SWD | 43 | 83.7 | 4.7 | 2.3 | 9.3 | 43 | 76.7 | 4.7 | 0.0 | 18.6 |
| Rogers, T.H. | All students | 6 | * | * | * | * | 3 | * | * | * | * |
| | Afr. Amer. | 1 | * | * | * | * | 1 | * | * | * | * |
| | Hispanic | 4 | * | * | * | * | 1 | * | * | * | * |
| | White | 1 | * | * | * | * | 1 | * | * | * | * |
| | Econ. Disadv. | 5 | * | * | * | * | 2 | * | * | * | * |
| | ELL Ever | 1 | * | * | * | * | | | | | |
| | SWD | 6 | * | * | * | * | 3 | * | * | * | * |

* Masked: n<10 Blanks: no data

2011 and 2012 Four-Year Graduation Summary: No Exclusions (Grades 9 - 12)
(for comparison to 2010 and prior years)
Standard Education Program

| District/Campus | Group | Class of 2012 | | | | | Class of 2011 | | | | |
|--|---------------|---------------|-----------------|----------------|----------|--------------|---------------|-----------------|----------------|----------|--------------|
| | | Class | Graduation Rate | Continuer Rate | GED Rate | Dropout Rate | Class | Graduation Rate | Continuer Rate | GED Rate | Dropout Rate |
| Scarborough HS | All students | 157 | 84.1 | 3.2 | 0.6 | 12.1 | 171 | 76.6 | 14.0 | 1.2 | 8.2 |
| | Afr. Amer. | 43 | 81.4 | 0.0 | 2.3 | 16.3 | 59 | 81.4 | 8.5 | 1.7 | 8.5 |
| | Asian | 2 | * | * | * | * | 1 | * | * | * | * |
| | Hispanic | 97 | 85.6 | 2.1 | 0.0 | 12.4 | 100 | 73.0 | 17.0 | 1.0 | 9.0 |
| | Two or More | 1 | * | * | * | * | | | | | |
| | White | 14 | 78.6 | 21.4 | 0.0 | 0.0 | 11 | 81.8 | 18.2 | 0.0 | 0.0 |
| | Econ. Disadv. | 120 | 87.5 | 1.7 | 0.0 | 10.8 | 132 | 81.1 | 12.1 | 0.8 | 6.1 |
| | ELL Ever | 20 | 80.0 | 5.0 | 0.0 | 15.0 | 26 | 46.2 | 38.5 | 3.8 | 11.5 |
| | SWD | 22 | 81.8 | 4.5 | 0.0 | 13.6 | 26 | 69.2 | 23.1 | 0.0 | 7.7 |
| Sharpstown HS | All students | 291 | 78.7 | 10.0 | 0.3 | 11.0 | 253 | 70.0 | 15.0 | 0.8 | 14.2 |
| | Afr. Amer. | 82 | 74.4 | 13.4 | 0.0 | 12.2 | 73 | 58.9 | 16.4 | 1.4 | 23.3 |
| | Amer. Ind. | 1 | * | * | * | * | | | | | |
| | Asian | 6 | * | * | * | * | 7 | * | * | * | * |
| | Hispanic | 195 | 80.0 | 8.2 | 0.5 | 11.3 | 163 | 74.2 | 14.7 | 0.0 | 11.0 |
| | Pac. Isl. | | | | | | 2 | * | * | * | * |
| | Two or More | 1 | * | * | * | * | | | | | |
| | White | 6 | * | * | * | * | 8 | * | * | * | * |
| | Econ. Disadv. | 258 | 82.2 | 7.8 | 0.4 | 9.7 | 200 | 77.0 | 12.5 | 0.0 | 10.5 |
| | ELL Ever | 86 | 68.6 | 19.8 | 0.0 | 11.6 | 66 | 63.6 | 21.2 | 0.0 | 15.2 |
| SWD | 42 | 66.7 | 16.7 | 0.0 | 16.7 | 34 | 52.9 | 32.4 | 0.0 | 14.7 | |
| Sharpstown International (081 and 452) | All students | 76 | 97.4 | 2.6 | 0.0 | 0.0 | 52 | 90.4 | 3.8 | 0.0 | 5.8 |
| | Afr. Amer. | 9 | * | * | * | * | 12 | 100 | 0 | 0 | 0 |
| | Asian | 8 | * | * | * | * | 5 | * | * | * | * |
| | Hispanic | 59 | 96.6 | 3.4 | 0.0 | 0.0 | 34 | 91.2 | 2.9 | 0.0 | 5.9 |
| | Two or More | | | | | | 1 | * | * | * | * |
| | Econ. Disadv. | 75 | 97.3 | 2.7 | 0.0 | 0.0 | 47 | 89.4 | 4.3 | 0.0 | 6.4 |
| | ELL Ever | 13 | 100.0 | 0.0 | 0.0 | 0.0 | 10 | 70.0 | 10.0 | 0.0 | 10.0 |
| | SWD | 2 | * | * | * | * | 2 | * | * | * | * |
| Sterling HS | All students | 230 | 78.3 | 5.2 | 0.0 | 16.5 | 270 | 84.1 | 6.3 | 0.0 | 9.6 |
| | Afr. Amer. | 168 | 76.8 | 5.4 | 0.0 | 17.9 | 209 | 87.6 | 4.8 | 0.0 | 7.7 |
| | Amer. Ind. | 2 | * | * | * | * | 3 | * | * | * | * |
| | Asian | 1 | * | * | * | * | 1 | * | * | * | * |
| | Hispanic | 57 | 86.0 | 3.5 | 0.0 | 10.5 | 56 | 76.8 | 7.1 | 0.0 | 16.1 |
| | White | 2 | * | * | * | * | 1 | * | * | * | * |
| | Econ. Disadv. | 170 | 75.3 | 5.3 | 0.0 | 19.4 | 176 | 84.7 | 5.1 | 0.0 | 10.2 |
| | ELL Ever | 13 | 76.9 | 0.0 | 0.0 | 23.1 | 12 | 41.7 | 16.7 | 0.0 | 41.7 |
| | SWD | 37 | 48.6 | 13.5 | 0.0 | 37.8 | 39 | 71.8 | 12.8 | 0.0 | 15.4 |

* Masked: n<10 Blanks: no data

2011 and 2012 Four-Year Graduation Summary: No Exclusions (Grades 9 - 12)
(for comparison to 2010 and prior years)
Standard Education Program

| District/Campus | Group | Class of 2012 | | | | | Class of 2011 | | | | |
|-----------------|---------------|---------------|-----------------|----------------|----------|--------------|---------------|-----------------|----------------|----------|--------------|
| | | Class | Graduation Rate | Continuer Rate | GED Rate | Dropout Rate | Class | Graduation Rate | Continuer Rate | GED Rate | Dropout Rate |
| Waltrip HS | All students | 409 | 80.2 | 6.4 | 1.5 | 12.0 | 446 | 82.1 | 8.5 | 0.9 | 8.5 |
| | Afr. Amer. | 54 | 85.2 | 5.6 | 0.0 | 9.3 | 61 | 83.6 | 8.2 | 0.0 | 8.2 |
| | Amer. Ind. | 4 | * | * | * | * | | | | | |
| | Asian | | | | | | 1 | * | * | * | * |
| | Hispanic | 285 | 79.3 | 7.4 | 1.1 | 12.3 | 338 | 79.9 | 9.5 | 0.9 | 9.8 |
| | Two or More | 3 | * | * | * | * | 2 | * | * | * | * |
| | White | 63 | 77.8 | 3.2 | 4.8 | 14.3 | 44 | 95.5 | 2.3 | 2.3 | 0.0 |
| | Econ. Disadv. | 279 | 85.3 | 6.1 | 0.7 | 7.9 | 315 | 82.9 | 7.3 | 0.3 | 9.5 |
| | ELL Ever | 27 | 55.6 | 25.9 | 0.0 | 18.5 | 46 | 52.2 | 19.6 | 0.0 | 28.3 |
| SWD | 32 | 62.5 | 6.3 | 0.0 | 31.3 | 32 | 50.0 | 31.3 | 0.0 | 18.8 | |
| Washington HS | All students | 204 | 71.1 | 12.7 | 2.5 | 13.7 | 199 | 75.9 | 10.6 | 1.0 | 12.6 |
| | Afr. Amer. | 136 | 73.5 | 10.3 | 1.5 | 14.7 | 158 | 77.8 | 9.5 | 0.6 | 12.0 |
| | Amer. Ind. | 4 | * | * | * | * | 3 | * | * | * | * |
| | Hispanic | 53 | 69.8 | 17.0 | 1.9 | 11.3 | 30 | 70.0 | 13.3 | 3.3 | 13.3 |
| | Pac. Isl. | 4 | * | * | * | * | 2 | * | * | * | * |
| | Two or More | | | | | | 1 | * | * | * | * |
| | White | 7 | * | * | * | * | 5 | * | * | * | * |
| | Econ. Disadv. | 169 | 74.6 | 12.4 | 1.2 | 11.8 | 139 | 80.6 | 12.2 | 0.7 | 6.5 |
| | ELL Ever | 12 | 33.3 | 66.7 | 0.0 | 0.0 | 7 | * | * | * | * |
| SWD | 25 | 48.0 | 28.0 | 0.0 | 24.0 | 24 | 62.5 | 20.8 | 0.0 | 16.7 | |
| Westbury HS | All students | 531 | 80.8 | 5.3 | 0.6 | 13.4 | 469 | 76.5 | 7.0 | 0.2 | 16.2 |
| | Afr. Amer. | 251 | 80.5 | 4.8 | 0.8 | 13.9 | 218 | 75.7 | 6.9 | 0.0 | 17.4 |
| | Amer. Ind. | 6 | * | * | * | * | | | | | |
| | Asian | 35 | 77.1 | 2.9 | 0.0 | 20.0 | 14 | 71.4 | 14.3 | 0.0 | 14.3 |
| | Hispanic | 224 | 81.7 | 5.8 | 0.4 | 12.1 | 223 | 78.0 | 6.7 | 0.4 | 14.8 |
| | Two or More | 3 | * | * | * | * | 1 | * | * | * | * |
| | White | 11 | 90.9 | 9.1 | 0.0 | 0.0 | 13 | 69.2 | 7.7 | 0.0 | 23.1 |
| | Other | 1 | * | * | * | * | | | | | |
| | Econ. Disadv. | 393 | 85.0 | 4.1 | 0.3 | 10.7 | 341 | 76.5 | 7.6 | 0.3 | 15.5 |
| | ELL Ever | 76 | 65.8 | 9.2 | 0.0 | 25.0 | 80 | 63.8 | 11.3 | 0.0 | 25.0 |
| SWD | 52 | 69.2 | 13.5 | 1.9 | 15.4 | 49 | 46.9 | 20.4 | 0.0 | 32.7 | |
| Westside HS | All students | 758 | 88.9 | 4.9 | 0.4 | 5.8 | 728 | 88.7 | 4.9 | 0.7 | 5.6 |
| | Afr. Amer. | 256 | 88.7 | 5.5 | 0.4 | 5.5 | 268 | 87.7 | 4.9 | 0.4 | 7.1 |
| | Amer. Ind. | 3 | * | * | * | * | 1 | * | * | * | * |
| | Asian | 52 | 90.4 | 3.8 | 0.0 | 5.8 | 51 | 92.2 | 7.8 | 0.0 | 0.0 |
| | Hispanic | 254 | 85.8 | 5.9 | 0.8 | 7.5 | 217 | 86.6 | 5.1 | 0.5 | 7.8 |
| | Pac. Isl. | 1 | * | * | * | * | 4 | * | * | * | * |
| | Two or More | 6 | * | * | * | * | 6 | * | * | * | * |
| | White | 186 | 93.5 | 2.7 | 0.0 | 3.8 | 180 | 91.7 | 4.4 | 1.7 | 2.2 |
| | Other | | | | | | 1 | * | * | * | * |
| | Econ. Disadv. | 344 | 89.0 | 5.2 | 0.6 | 5.2 | 353 | 91.2 | 2.5 | 0.6 | 5.7 |
| | ELL Ever | 52 | 71.2 | 21.2 | 0.0 | 7.7 | 58 | 63.8 | 17.2 | 0.0 | 19.0 |
| SWD | 65 | 75.4 | 12.3 | 0.0 | 12.3 | 44 | 72.7 | 15.9 | 0.0 | 11.4 | |

* Masked: n<10 Blanks: no data

2011 and 2012 Four-Year Graduation Summary: No Exclusions (Grades 9 - 12)
(for comparison to 2010 and prior years)
Standard Education Program

| District/Campus | Group | Class of 2012 | | | | | Class of 2011 | | | | |
|-----------------|---------------|---------------|-----------------|----------------|----------|--------------|---------------|-----------------|----------------|----------|--------------|
| | | Class | Graduation Rate | Continuer Rate | GED Rate | Dropout Rate | Class | Graduation Rate | Continuer Rate | GED Rate | Dropout Rate |
| Wheatley HS | All students | 250 | 67.6 | 14.4 | 1.2 | 16.8 | 248 | 69.0 | 12.1 | 0.0 | 19.0 |
| | Afr. Amer. | 165 | 70.9 | 10.3 | 0.6 | 18.2 | 175 | 72.0 | 8.6 | 0.0 | 19.4 |
| | Amer. Ind. | | | | | | 1 | * | * | * | * |
| | Asian | 1 | * | * | * | * | | | | | |
| | Hispanic | 83 | 60.2 | 22.9 | 2.4 | 14.5 | 72 | 61.1 | 20.8 | 0.0 | 18.1 |
| | White | 1 | * | * | * | * | | | | | |
| | Econ. Disadv. | 183 | 74.9 | 10.4 | 0.5 | 14.2 | 185 | 74.6 | 11.4 | 0.0 | 14.1 |
| | ELL Ever | 33 | 54.5 | 30.3 | 0.0 | 15.2 | 29 | 44.8 | 48.3 | 0.0 | 6.9 |
| | SWD | 50 | 68.0 | 18.0 | 0.0 | 14.0 | 37 | 59.5 | 13.5 | 0.0 | 27.0 |
| Worthing HS | All students | 235 | 68.5 | 6.8 | 1.3 | 23.4 | 271 | 76.8 | 7.4 | 0.0 | 15.9 |
| | Afr. Amer. | 213 | 68.5 | 7.0 | 1.4 | 23.0 | 257 | 77.8 | 7.4 | 0.0 | 14.8 |
| | Amer. Ind. | 1 | * | * | * | * | | | | | |
| | Hispanic | 19 | 68.4 | 5.3 | 0.0 | 26.3 | 12 | 58.3 | 8.3 | 0.0 | 33.3 |
| | Two or More | | | | | | 1 | * | * | * | * |
| | White | 2 | * | * | * | * | 1 | * | * | * | * |
| | Econ. Disadv. | 166 | 68.1 | 7.2 | 0.6 | 24.1 | 186 | 77.4 | 7.5 | 0.0 | 15.1 |
| | ELL Ever | 7 | * | * | * | * | 3 | * | * | * | * |
| | SWD | 49 | 55.1 | 12.2 | 0.0 | 32.7 | 51 | 58.8 | 11.8 | 0.0 | 29.4 |
| Yates HS | All students | 256 | 85.2 | 3.9 | 1.2 | 9.8 | 360 | 78.9 | 2.5 | 0.3 | 18.3 |
| | Afr. Amer. | 246 | 85.0 | 4.1 | 0.8 | 10.2 | 331 | 79.5 | 2.4 | 0.3 | 17.8 |
| | Hispanic | 9 | * | * | * | * | 23 | 73.9 | 4.3 | 0.0 | 21.7 |
| | Pac. Isl. | | | | | | 3 | * | * | * | * |
| | White | 1 | * | * | * | * | 3 | * | * | * | * |
| | Econ. Disadv. | 184 | 87.0 | 3.3 | 1.1 | 8.7 | 224 | 80.8 | 2.2 | 0.0 | 17.0 |
| | ELL Ever | 3 | * | * | * | * | 9 | * | * | * | * |
| | SWD | 48 | 81.3 | 8.3 | 0.0 | 10.4 | 72 | 68.1 | 2.8 | 1.4 | 27.8 |

* Masked: n<10 Blanks: no data

2011 and 2012 Four-Year Graduation Summary: No Exclusions (Grades 9 - 12)
(for comparison to 2010 and prior years)
Alternative Education Program or Not Rated

| District/Campus | Group | Class of 2012 | | | | | Class of 2011 | | | | |
|--|---------------|---------------|-----------------|----------------|----------|--------------|---------------|-----------------|----------------|----------|--------------|
| | | Class | Graduation Rate | Continuer Rate | GED Rate | Dropout Rate | Class | Graduation Rate | Continuer Rate | GED Rate | Dropout Rate |
| Advanced Virtual Academy (451 and 462) | All students | 260 | 5.8 | 33.8 | 1.5 | 58.8 | 163 | 2.5 | 45.4 | 1.2 | 50.9 |
| | Afr. Amer. | 104 | 9.6 | 27.9 | 1.0 | 61.5 | 62 | 4.8 | 51.6 | 1.6 | 41.9 |
| | Amer. Ind. | 1 | * | * | * | * | 1 | * | * | * | * |
| | Hispanic | 146 | 3.4 | 39.0 | 0.7 | 56.8 | 96 | 1.0 | 42.7 | 0.0 | 56.3 |
| | White | 9 | * | * | * | * | 4 | * | * | * | * |
| | Econ. Disadv. | 151 | 6.0 | 25.2 | 2.0 | 66.9 | 67 | 1.5 | 44.8 | 0.0 | 53.7 |
| | ELL Ever | 47 | 2.1 | 38.3 | 0.0 | 59.6 | 25 | 0.0 | 44.0 | 0.0 | 56.0 |
| | SWD | 34 | 2.9 | 11.8 | 0.0 | 85.3 | 21 | 4.8 | 14.3 | 0.0 | 81.0 |
| Beechnut Academy | All students | 1 | * | * | * | * | 1 | * | * | * | * |
| | Hispanic | 1 | * | * | * | * | 1 | * | * | * | * |
| | Econ. Disadv. | 1 | * | * | * | * | 1 | * | * | * | * |
| | ELL Ever | 1 | * | * | * | * | 1 | * | * | * | * |
| CLC HS/DeVry Acad. (closed) | All students | 78 | 62.8 | 0.0 | 3.8 | 33.3 | 162 | 65.4 | 3.1 | 1.2 | 30.2 |
| | Afr. Amer. | 43 | 60.5 | 0.0 | 4.7 | 34.9 | 98 | 53.1 | 4.1 | 2.0 | 40.8 |
| | Asian | | | | | | 1 | * | * | * | * |
| | Hispanic | 31 | 71.0 | 0.0 | 0.0 | 29.0 | 60 | 83.3 | 1.7 | 0.0 | 15.0 |
| | Pac. Isl. | 1 | * | * | * | * | 1 | * | * | * | * |
| | White | 3 | * | * | * | * | 2 | * | * | * | * |
| | Econ. Disadv. | 72 | 68.1 | 0.0 | 2.8 | 29.2 | 130 | 69.2 | 3.8 | 0.8 | 26.2 |
| | ELL Ever | 7 | * | * | * | * | 13 | 61.5 | 0.0 | 0.0 | 38.5 |
| SWD | 1 | * | * | * | * | 6 | * | * | * | * | |
| Community Services | All students | 32 | 0.0 | 0.0 | 21.9 | 78.1 | 44 | 0.0 | 0.0 | 25.0 | 75.0 |
| | Afr. Amer. | 11 | 0.0 | 0.0 | 18.2 | 81.8 | 15 | 0.0 | 0.0 | 20.0 | 80.0 |
| | Hispanic | 14 | 0.0 | 0.0 | 28.6 | 71.4 | 19 | 0.0 | 0.0 | 21.1 | 78.9 |
| | White | 7 | * | * | * | * | 9 | * | * | * | * |
| | Other | | | | | | 1 | * | * | * | * |
| | Econ. Disadv. | 7 | * | * | * | * | 7 | * | * | * | * |
| | ELL Ever | 5 | * | * | * | * | 5 | * | * | * | * |
| | SWD | 5 | * | * | * | * | 11 | 0.0 | 0.0 | 27.3 | 72.7 |
| Harper | All students | 23 | 21.7 | 13.0 | 0.0 | 65.2 | 12 | 25.0 | 16.7 | 0.0 | 58.3 |
| | Afr. Amer. | 16 | 18.8 | 6.3 | 0.0 | 75.0 | 4 | * | * | * | * |
| | Hispanic | 5 | * | * | * | * | 6 | * | * | * | * |
| | White | 2 | * | * | * | * | 2 | * | * | * | * |
| | Econ. Disadv. | 18 | 22.2 | 11.1 | 0.0 | 66.7 | 10 | 20.0 | 20.0 | 0.0 | 60.0 |
| | ELL Ever | 2 | * | * | * | * | 3 | * | * | * | * |
| | SWD | 23 | 21.7 | 13.0 | 0.0 | 65.2 | 11 | 27.3 | 9.1 | 0.0 | 63.6 |
| HCC Life Skills | All students | 12 | 0.0 | 100.0 | 0.0 | 0.0 | 10 | 0.0 | 100.0 | 0.0 | 0.0 |
| | Afr. Amer. | 4 | * | * | * | * | 4 | * | * | * | * |
| | Asian | | | | | | 1 | * | * | * | * |
| | Hispanic | 6 | * | * | * | * | 4 | * | * | * | * |
| | Pac. Isl. | | | | | | 1 | * | * | * | * |
| | White | 2 | * | * | * | * | | | | | |
| | Econ. Disadv. | 9 | * | * | * | * | 8 | * | * | * | * |
| | ELL Ever | 5 | * | * | * | * | 3 | * | * | * | * |
| SWD | 12 | 0.0 | 100.0 | 0.0 | 0.0 | 10 | 0.0 | 100.0 | 0.0 | 0.0 | |

* Masked: n<10 Blanks: no data

2011 and 2012 Four-Year Graduation Summary: No Exclusions (Grades 9 - 12)
(for comparison to 2010 and prior years)
Alternative Education Program or Not Rated

| District/Campus | Group | Class of 2012 | | | | | Class of 2011 | | | | |
|------------------------------|---------------|---------------|-----------------|----------------|----------|--------------|---------------|-----------------|----------------|----------|--------------|
| | | Class | Graduation Rate | Continuer Rate | GED Rate | Dropout Rate | Class | Graduation Rate | Continuer Rate | GED Rate | Dropout Rate |
| Hope Academy | All students | 69 | 44.9 | 13.0 | 0.0 | 42.0 | 68 | 33.8 | 33.8 | 4.4 | 27.9 |
| | Afr. Amer. | 67 | 44.8 | 13.4 | 0.0 | 41.8 | 62 | 32.3 | 33.9 | 3.2 | 30.6 |
| | Hispanic | 2 | * | * | * | * | 3 | * | * | * | * |
| | Two or More | | | | | | 3 | * | * | * | * |
| | Econ. Disadv. | 49 | 49.0 | 12.2 | 0.0 | 38.8 | 45 | 40.0 | 35.6 | 6.7 | 17.8 |
| | SWD | 1 | * | * | * | * | 4 | * | * | * | * |
| JJAEP | All students | 1 | * | * | * | * | | | | | |
| | Afr. Amer. | 1 | * | * | * | * | | | | | |
| | Econ. Disadv. | 1 | * | * | * | * | | | | | |
| Leader's Academy HS (closed) | All students | 25 | 72.0 | 0.0 | 0.0 | 28.0 | 60 | 75.0 | 0.0 | 0.0 | 25.0 |
| | Afr. Amer. | 15 | 80.0 | 0.0 | 0.0 | 20.0 | 45 | 75.6 | 0.0 | 0.0 | 24.4 |
| | Hispanic | 9 | * | * | * | * | 14 | 78.6 | 0.0 | 0.0 | 21.4 |
| | Two or More | 1 | * | * | * | * | | | | | |
| | White | | | | | | 1 | * | * | * | * |
| | Econ. Disadv. | 17 | 88.2 | 0.0 | 0.0 | 11.8 | 33 | 78.8 | 0.0 | 0.0 | 21.2 |
| | ELL Ever | 2 | * | * | * | * | 3 | * | * | * | * |
| | SWD | 1 | * | * | * | * | 1 | * | * | * | * |
| Liberty HS | All students | 95 | 2.1 | 72.6 | 0.0 | 25.3 | 77 | 0.0 | 79.2 | 0.0 | 20.8 |
| | Afr. Amer. | 4 | * | * | * | * | 5 | * | * | * | * |
| | Asian | 5 | * | * | * | * | 3 | * | * | * | * |
| | Hispanic | 85 | 2.4 | 70.6 | 0.0 | 27.1 | 69 | 0.0 | 76.8 | 0.0 | 23.2 |
| | White | 1 | * | * | * | * | | | | | |
| | Econ. Disadv. | 72 | 2.8 | 68.1 | 0.0 | 29.2 | 62 | 0.0 | 83.9 | 0.0 | 16.1 |
| | ELL Ever | 88 | 2.3 | 73.9 | 0.0 | 23.9 | 77 | 0.0 | 79.2 | 0.0 | 20.8 |
| | SWD | 3 | * | * | * | * | 1 | * | * | * | * |
| New Aspirations HS (closed) | All students | 135 | 13.3 | 0.0 | 5.2 | 81.5 | 146 | 17.1 | 23.3 | 4.8 | 54.8 |
| | Afr. Amer. | 49 | 10.2 | 0.0 | 4.1 | 85.7 | 54 | 13.0 | 18.5 | 3.7 | 64.8 |
| | Asian | 1 | * | * | * | * | | | | | |
| | Hispanic | 71 | 12.7 | 0.0 | 4.2 | 83.1 | 82 | 17.1 | 25.6 | 4.9 | 52.4 |
| | Two or More | | | | | | 1 | * | * | * | * |
| | White | 14 | 28.6 | 0.0 | 14.3 | 57.1 | 9 | * | * | * | * |
| | Econ. Disadv. | 89 | 14.6 | 0.0 | 3.4 | 82.0 | 81 | 22.2 | 21.0 | 2.5 | 54.3 |
| | ELL Ever | 13 | 7.7 | 0.0 | 0.0 | 92.3 | 21 | 14.3 | 42.9 | 0.0 | 42.9 |
| SWD | 5 | * | * | * | * | 9 | * | * | * | * | |
| REACH HS | All students | 170 | 31.8 | 21.8 | 0.0 | 46.5 | 162 | 32.1 | 21.0 | 1.9 | 45.1 |
| | Afr. Amer. | 64 | 32.8 | 17.2 | 0.0 | 50.0 | 46 | 23.9 | 23.9 | 2.2 | 50.0 |
| | Asian | 1 | * | * | * | * | | | | | |
| | Hispanic | 102 | 30.4 | 25.5 | 0.0 | 44.1 | 113 | 35.4 | 19.5 | 1.8 | 43.4 |
| | White | 3 | * | * | * | * | 3 | * | * | * | * |
| | Econ. Disadv. | 121 | 38.8 | 22.3 | 0.0 | 38.8 | 116 | 40.5 | 18.1 | 0.9 | 40.5 |
| | ELL Ever | 24 | 20.8 | 41.7 | 0.0 | 37.5 | 24 | 12.5 | 33.3 | 0.0 | 54.2 |
| | SWD | 42 | 42.9 | 9.5 | 0.0 | 47.6 | 30 | 36.7 | 10.0 | 3.3 | 50.0 |

* Masked: n<10 Blanks: no data

2011 and 2012 Four-Year Graduation Summary: No Exclusions (Grades 9 - 12)
(for comparison to 2010 and prior years)
Alternative Education Program or Not Rated

| District/Campus | Group | Class of 2012 | | | | | Class of 2011 | | | | |
|-----------------|---------------|---------------|-----------------|----------------|----------|--------------|---------------|-----------------|----------------|----------|--------------|
| | | Class | Graduation Rate | Continuer Rate | GED Rate | Dropout Rate | Class | Graduation Rate | Continuer Rate | GED Rate | Dropout Rate |
| SOAR | All students | 1 | * | * | * | * | 3 | * | * | * | * |
| | Hispanic | 1 | * | * | * | * | 2 | * | * | * | * |
| | White | | | | | | 1 | * | * | * | * |
| | Econ. Disadv. | | | | | | 2 | * | * | * | * |
| | ELL Ever | | | | | | 1 | * | * | * | * |
| | SWD | 1 | * | * | * | * | 3 | * | * | * | * |

* Masked: n<10 Blanks: no data

2011 and 2012 Four-Year Graduation Summary: With Exclusions (Grades 9 - 12)
(for state accountability in 2011 and subsequent years)
Standard Education Program

| District/Campus | Group | Class of 2012 | | | | | Class of 2011 | | | | |
|-----------------|---------------|---------------|-----------------|----------------|----------|--------------|---------------|-----------------|----------------|----------|--------------|
| | | Class | Graduation Rate | Continuer Rate | GED Rate | Dropout Rate | Class | Graduation Rate | Continuer Rate | GED Rate | Dropout Rate |
| HISD | All students | 11,030 | 81.7 | 6.3 | 0.7 | 11.3 | 11,126 | 81.2 | 7.3 | 0.6 | 10.8 |
| | Afr. Amer. | 3,299 | 79.9 | 5.2 | 0.7 | 14.1 | 3,588 | 80.1 | 5.6 | 0.6 | 13.7 |
| | Amer. Ind. | 37 | 73.0 | 10.8 | 0.0 | 16.2 | 18 | 83.3 | 0.0 | 0.0 | 16.7 |
| | Asian | 413 | 92.3 | 2.9 | 0.0 | 4.8 | 390 | 93.6 | 3.8 | 0.3 | 2.3 |
| | Hispanic | 6,165 | 80.4 | 7.8 | 0.5 | 11.3 | 5,953 | 79.2 | 9.3 | 0.6 | 10.9 |
| | Pac. Isl. | 27 | 96.3 | 0.0 | 0.0 | 3.7 | 48 | 93.8 | 4.2 | 0.0 | 2.1 |
| | Two or More | 71 | 94.4 | 4.2 | 0.0 | 1.4 | 57 | 93.0 | 1.8 | 0.0 | 5.3 |
| | White | 1,014 | 90.2 | 2.8 | 1.9 | 5.1 | 1,068 | 90.5 | 3.8 | 1.4 | 4.2 |
| | Other | 4 | * | * | * | * | 4 | * | * | * | * |
| | Econ. Disadv. | 7,611 | 82.8 | 6.1 | 0.4 | 10.7 | 7,469 | 82.6 | 7.5 | 0.5 | 9.5 |
| | ELL Ever | 1,266 | 59.5 | 20.0 | 0.0 | 20.5 | 1,351 | 59.0 | 20.7 | 0.2 | 20.1 |
| | SWD | 1,109 | 64.6 | 13.9 | 0.3 | 21.3 | 1,084 | 67.5 | 13.8 | 0.6 | 18.0 |
| Austin HS | All students | 383 | 81.5 | 4.2 | 0.5 | 13.8 | 437 | 84.4 | 7.1 | 0.2 | 8.2 |
| | Afr. Amer. | 16 | 81.3 | 0.0 | 0.0 | 18.8 | 15 | 93.3 | 6.7 | 0.0 | 0.0 |
| | Amer. Ind. | 2 | * | * | * | * | 1 | * | * | * | * |
| | Asian | | | | | | 1 | * | * | * | * |
| | Hispanic | 362 | 81.5 | 4.4 | 0.6 | 13.5 | 416 | 83.9 | 7.2 | 0.2 | 8.7 |
| | White | 3 | * | * | * | * | 4 | * | * | * | * |
| | Econ. Disadv. | 310 | 82.6 | 3.2 | 0.6 | 13.5 | 387 | 86.8 | 5.4 | 0.3 | 7.5 |
| | ELL Ever | 82 | 69.5 | 7.3 | 0.0 | 23.2 | 90 | 70.0 | 12.2 | 0.0 | 17.8 |
| | SWD | 33 | 48.5 | 12.1 | 0.0 | 39.4 | 38 | 78.9 | 21.1 | 0.0 | 0.0 |
| Bellaire HS | All students | 858 | 91.4 | 3.7 | 0.5 | 4.4 | 776 | 89.3 | 5.0 | 0.5 | 5.2 |
| | Afr. Amer. | 156 | 94.2 | 2.6 | 0.0 | 3.2 | 98 | 87.8 | 1.0 | 2.0 | 9.2 |
| | Amer. Ind. | 3 | * | * | * | * | 3 | * | * | * | * |
| | Asian | 131 | 96.2 | 2.3 | 0.0 | 1.5 | 153 | 97.4 | 1.3 | 0.7 | 0.7 |
| | Hispanic | 292 | 83.9 | 7.2 | 0.3 | 8.6 | 230 | 78.7 | 12.6 | 0.0 | 8.7 |
| | Pac. Isl. | | | | | | 2 | * | * | * | * |
| | Two or More | 28 | 96.4 | 3.6 | 0.0 | 0.0 | 24 | 91.7 | 0.0 | 0.0 | 8.3 |
| | White | 245 | 96.3 | 1.2 | 1.2 | 1.2 | 266 | 94.0 | 2.6 | 0.4 | 3.0 |
| | Other | 3 | * | * | * | * | | | | | |
| | Econ. Disadv. | 326 | 88.7 | 4.9 | 0.0 | 6.4 | 248 | 81.5 | 10.1 | 0.8 | 7.7 |
| | ELL Ever | 65 | 70.8 | 12.3 | 0.0 | 16.9 | 49 | 57.1 | 30.6 | 0.0 | 12.2 |
| SWD | 42 | 73.8 | 14.3 | 0.0 | 11.9 | 35 | 77.1 | 14.3 | 2.9 | 5.7 | |
| Carnegie HS | All students | 84 | 100.0 | 0.0 | 0.0 | 0.0 | 80 | 100.0 | 0.0 | 0.0 | 0.0 |
| | Afr. Amer. | 19 | 100.0 | 0.0 | 0.0 | 0.0 | 10 | 100.0 | 0.0 | 0.0 | 0.0 |
| | Asian | 8 | * | * | * | * | 7 | * | * | * | * |
| | Hispanic | 21 | 100.0 | 0.0 | 0.0 | 0.0 | 20 | 100.0 | 0.0 | 0.0 | 0.0 |
| | White | 36 | 100.0 | 0.0 | 0.0 | 0.0 | 43 | 100.0 | 0.0 | 0.0 | 0.0 |
| | Econ. Disadv. | 26 | 100.0 | 0.0 | 0.0 | 0.0 | 11 | 100.0 | 0.0 | 0.0 | 0.0 |
| | ELL Ever | 1 | * | * | * | * | | | | | |
| | SWD | | | | | | 3 | * | * | * | * |

* Masked: n<10 Blanks: No data

2011 and 2012 Four-Year Graduation Summary: With Exclusions (Grades 9 - 12)
(for state accountability in 2011 and subsequent years)
Standard Education Program

| District/Campus | Group | Class of 2012 | | | | | Class of 2011 | | | | |
|-----------------------|---------------|---------------|-----------------|----------------|----------|--------------|---------------|-----------------|----------------|----------|--------------|
| | | Class | Graduation Rate | Continuer Rate | GED Rate | Dropout Rate | Class | Graduation Rate | Continuer Rate | GED Rate | Dropout Rate |
| Challenge HS | All students | 100 | 96.0 | 3.0 | 0.0 | 1.0 | 82 | 84.1 | 13.4 | 0.0 | 2.4 |
| | Afr. Amer. | 23 | 100.0 | 0.0 | 0.0 | 0.0 | 16 | 100.0 | 0.0 | 0.0 | 0.0 |
| | Asian | 3 | * | * | * | * | 2 | * | * | * | * |
| | Hispanic | 61 | 95.1 | 3.3 | 0.0 | 1.6 | 46 | 80.4 | 15.2 | 0.0 | 4.3 |
| | Two or More | 2 | * | * | * | * | 1 | * | * | * | * |
| | White | 11 | 90.9 | 9.1 | 0.0 | 0.0 | 17 | 76.5 | 23.5 | 0.0 | 0.0 |
| | Econ. Disadv. | 62 | 98.4 | 1.6 | 0.0 | 0.0 | 48 | 81.3 | 18.8 | 0.0 | 0.0 |
| | ELL Ever | | | | | | 1 | * | * | * | * |
| | SWD | | | | | | 2 | * | * | * | * |
| Chavez HS | All students | 619 | 85.9 | 3.1 | 0.3 | 10.7 | 598 | 82.9 | 4.8 | 0.0 | 12.2 |
| | Afr. Amer. | 89 | 91.0 | 1.1 | 0.0 | 7.9 | 79 | 91.1 | 1.3 | 0.0 | 7.6 |
| | Asian | 27 | 88.9 | 0.0 | 0.0 | 11.1 | 19 | 78.9 | 5.3 | 0.0 | 15.8 |
| | Hispanic | 494 | 84.8 | 3.6 | 0.4 | 11.1 | 487 | 81.9 | 5.5 | 0.0 | 12.5 |
| | Two or More | | | | | | 1 | * | * | * | * |
| | White | 9 | * | * | * | * | 10 | 80.0 | 0.0 | 0.0 | 20.0 |
| | Other | | | | | | 2 | * | * | * | * |
| | Econ. Disadv. | 465 | 88.6 | 2.8 | 0.0 | 8.6 | 484 | 86.8 | 4.1 | 0.0 | 9.1 |
| | ELL Ever | 77 | 66.2 | 6.5 | 0.0 | 27.3 | 96 | 66.7 | 11.5 | 0.0 | 21.9 |
| SWD | 59 | 71.2 | 8.5 | 0.0 | 20.3 | 44 | 70.5 | 13.6 | 0.0 | 15.9 | |
| Davis HS | All students | 328 | 85.4 | 12.2 | 0.6 | 1.8 | 369 | 89.4 | 7.9 | 0.3 | 2.4 |
| | Afr. Amer. | 32 | 78.1 | 21.9 | 0.0 | 0.0 | 25 | 92.0 | 4.0 | 0.0 | 4.0 |
| | Amer. Ind. | | | | | | 1 | * | * | * | * |
| | Hispanic | 293 | 86.0 | 11.3 | 0.7 | 2.0 | 341 | 89.1 | 8.2 | 0.3 | 2.3 |
| | White | 3 | * | * | * | * | 2 | * | * | * | * |
| | Econ. Disadv. | 302 | 86.1 | 11.9 | 0.7 | 1.3 | 339 | 90.9 | 7.4 | 0.3 | 1.5 |
| | ELL Ever | 43 | 65.1 | 30.2 | 0.0 | 4.7 | 56 | 80.4 | 19.6 | 0.0 | 0.0 |
| | SWD | 50 | 72.0 | 22.0 | 0.0 | 6.0 | 45 | 86.7 | 8.9 | 0.0 | 4.4 |
| DeBakey HS | All students | 191 | 100.0 | 0.0 | 0.0 | 0.0 | 210 | 100.0 | 0.0 | 0.0 | 0.0 |
| | Afr. Amer. | 55 | 100.0 | 0.0 | 0.0 | 0.0 | 48 | 100.0 | 0.0 | 0.0 | 0.0 |
| | Asian | 69 | 100.0 | 0.0 | 0.0 | 0.0 | 83 | 100.0 | 0.0 | 0.0 | 0.0 |
| | Hispanic | 55 | 100.0 | 0.0 | 0.0 | 0.0 | 61 | 100.0 | 0.0 | 0.0 | 0.0 |
| | Pac. Isl. | | | | | | 1 | * | * | * | * |
| | Two or More | 1 | * | * | * | * | 2 | * | * | * | * |
| | White | 11 | 100.0 | 0.0 | 0.0 | 0.0 | 15 | 100.0 | 0.0 | 0.0 | 0.0 |
| | Econ. Disadv. | 94 | 100.0 | 0.0 | 0.0 | 0.0 | 107 | 100.0 | 0.0 | 0.0 | 0.0 |
| East Early College HS | All students | 95 | 93.7 | 6.3 | 0.0 | 0.0 | 89 | 86.5 | 13.5 | 0.0 | 0.0 |
| | Afr. Amer. | 5 | * | * | * | * | 4 | * | * | * | * |
| | Asian | 3 | * | * | * | * | 5 | * | * | * | * |
| | Hispanic | 85 | 92.9 | 7.1 | 0.0 | 0.0 | 79 | 87.3 | 12.7 | 0.0 | 0.0 |
| | White | 2 | * | * | * | * | 1 | * | * | * | * |
| | Econ. Disadv. | 79 | 92.4 | 7.6 | 0.0 | 0.0 | 79 | 86.1 | 13.9 | 0.0 | 0.0 |
| | ELL Ever | | | | | | 2 | * | * | * | * |

* Masked: n<10 Blanks: No data

2011 and 2012 Four-Year Graduation Summary: With Exclusions (Grades 9 - 12)
(for state accountability in 2011 and subsequent years)
Standard Education Program

| District/Campus | Group | Class of 2012 | | | | | Class of 2011 | | | | |
|---|---------------|---------------|-----------------|----------------|----------|--------------|---------------|-----------------|----------------|----------|--------------|
| | | Class | Graduation Rate | Continuer Rate | GED Rate | Dropout Rate | Class | Graduation Rate | Continuer Rate | GED Rate | Dropout Rate |
| Eastwood Academy | All students | 94 | 98.9 | 0.0 | 0.0 | 1.1 | 63 | 100.0 | 0.0 | 0.0 | 0.0 |
| | Afr. Amer. | | | | | | 2 | * | * | * | * |
| | Asian | 2 | * | * | * | * | 1 | * | * | * | * |
| | Hispanic | 91 | 98.9 | 0.0 | 0.0 | 1.1 | 60 | 100.0 | 0.0 | 0.0 | 0.0 |
| | White | 1 | * | * | * | * | | | | | |
| | Econ. Disadv. | 80 | 98.8 | 0.0 | 0.0 | 1.3 | 45 | 100.0 | 0.0 | 0.0 | 0.0 |
| | ELL Ever | 1 | * | * | * | * | 1 | * | * | * | * |
| Energized HS SE (321) | All students | 47 | 97.9 | 0.0 | 0.0 | 2.1 | | | | | |
| | Afr. Amer. | 25 | 96.0 | 0.0 | 0.0 | 4.0 | | | | | |
| | Asian | 4 | * | * | * | * | | | | | |
| | Hispanic | 16 | 100.0 | 0.0 | 0.0 | 0.0 | | | | | |
| | White | 2 | * | * | * | * | | | | | |
| | Econ. Disadv. | 26 | 100.0 | 0.0 | 0.0 | 0.0 | | | | | |
| | SWD | 2 | * | * | * | * | | | | | |
| Furr HS | All students | 157 | 89.8 | 7.0 | 0.0 | 3.2 | 187 | 90.9 | 5.9 | 0.5 | 2.7 |
| | Afr. Amer. | 25 | 88.0 | 4.0 | 0.0 | 8.0 | 45 | 84.4 | 8.9 | 0.0 | 6.7 |
| | Amer. Ind. | 1 | * | * | * | * | 0 | | | | |
| | Asian | 1 | * | * | * | * | 0 | | | | |
| | Hispanic | 123 | 91.1 | 7.3 | 0.0 | 1.6 | 137 | 92.7 | 5.1 | 0.7 | 1.5 |
| | White | 7 | * | * | * | * | 5 | * | * | * | * |
| | Econ. Disadv. | 136 | 90.4 | 7.4 | 0.0 | 2.2 | 173 | 91.9 | 5.2 | 0.6 | 2.3 |
| | ELL Ever | 16 | 37.5 | 50.0 | 0.0 | 12.5 | 34 | 82.4 | 17.6 | 0.0 | 0.0 |
| SWD | 10 | 60.0 | 40.0 | 0.0 | 0.0 | 32 | 87.5 | 9.4 | 0.0 | 3.1 | |
| Houston Academy for International Studies | All students | 83 | 91.6 | 8.4 | 0.0 | 0.0 | 66 | 92.4 | 7.6 | 0.0 | 0.0 |
| | Afr. Amer. | 38 | 94.7 | 5.3 | 0.0 | 0.0 | 29 | 89.7 | 10.3 | 0.0 | 0.0 |
| | Asian | | | | | | 1 | * | * | * | * |
| | Hispanic | 40 | 92.5 | 7.5 | 0.0 | 0.0 | 32 | 96.9 | 3.1 | 0.0 | 0.0 |
| | Pac. Isl. | 1 | * | * | * | * | 1 | * | * | * | * |
| | White | 4 | * | * | * | * | 3 | * | * | * | * |
| | Econ. Disadv. | 53 | 94.3 | 5.7 | 0.0 | 0.0 | 46 | 95.7 | 4.3 | 0.0 | 0.0 |
| | ELL Ever | | | | | | 3 | * | * | * | * |
| SWD | 3 | * | * | * | * | 2 | * | * | * | * | |
| Houston MST (005 and 310) | All students | 561 | 77.0 | 11.8 | 0.7 | 10.5 | 519 | 75.3 | 13.1 | 0.8 | 10.8 |
| | Afr. Amer. | 27 | 74.1 | 3.7 | 0.0 | 22.2 | 26 | 61.5 | 11.5 | 0.0 | 26.9 |
| | Asian | 2 | * | * | * | * | | | | | |
| | Hispanic | 522 | 77.0 | 12.3 | 0.8 | 10.0 | 482 | 76.3 | 13.1 | 0.8 | 9.8 |
| | White | 10 | 80.0 | 10.0 | 0.0 | 10.0 | 11 | 63.6 | 18.2 | 0.0 | 18.2 |
| | Econ. Disadv. | 505 | 80.4 | 9.5 | 0.6 | 9.5 | 450 | 79.6 | 11.1 | 0.7 | 8.7 |
| | ELL Ever | 123 | 60.2 | 26.0 | 0.0 | 13.8 | 122 | 65.6 | 21.3 | 0.0 | 13.1 |
| | SWD | 74 | 71.6 | 18.9 | 0.0 | 9.5 | 54 | 63.0 | 20.4 | 1.9 | 14.8 |

* Masked: n<10 Blanks: No data

2011 and 2012 Four-Year Graduation Summary: With Exclusions (Grades 9 - 12)

(for state accountability in 2011 and subsequent years)

Standard Education Program

| District/Campus | Group | Class of 2012 | | | | | Class of 2011 | | | | |
|-----------------|---------------|---------------|-----------------|----------------|----------|--------------|---------------|-----------------|----------------|----------|--------------|
| | | Class | Graduation Rate | Continuer Rate | GED Rate | Dropout Rate | Class | Graduation Rate | Continuer Rate | GED Rate | Dropout Rate |
| HSLECJ | All students | 122 | 99.2 | 0.0 | 0.0 | 0.8 | 120 | 99.2 | 0.0 | 0.0 | 0.8 |
| | Afr. Amer. | 27 | 100.0 | 0.0 | 0.0 | 0.0 | 30 | 100.0 | 0.0 | 0.0 | 0.0 |
| | Hispanic | 93 | 98.9 | 0.0 | 0.0 | 1.1 | 84 | 100.0 | 0.0 | 0.0 | 0.0 |
| | Two or More | | | | | | 2 | * | * | * | * |
| | White | 2 | * | * | * | * | 4 | * | * | * | * |
| | Econ. Disadv. | 100 | 99.0 | 0.0 | 0.0 | 1.0 | 76 | 98.7 | 0.0 | 0.0 | 1.3 |
| | SWD | | | | | | 2 | * | * | * | * |
| HSPVA | All students | 151 | 100.0 | 0.0 | 0.0 | 0.0 | 151 | 100.0 | 0.0 | 0.0 | 0.0 |
| | Afr. Amer. | 28 | 100.0 | 0.0 | 0.0 | 0.0 | 31 | 100.0 | 0.0 | 0.0 | 0.0 |
| | Amer. Ind. | 1 | * | * | * | * | | | | | |
| | Asian | 6 | * | * | * | * | 3 | * | * | * | * |
| | Hispanic | 35 | 100.0 | 0.0 | 0.0 | 0.0 | 37 | 100.0 | 0.0 | 0.0 | 0.0 |
| | Two or More | 4 | * | * | * | * | 1 | * | * | * | * |
| | White | 77 | 100.0 | 0.0 | 0.0 | 0.0 | 79 | 100.0 | 0.0 | 0.0 | 0.0 |
| | Econ. Disadv. | 28 | 100.0 | 0.0 | 0.0 | 0.0 | 32 | 100.0 | 0.0 | 0.0 | 0.0 |
| | ELL Ever | | | | | | 2 | * | * | * | * |
| | SWD | 4 | * | * | * | * | 1 | * | * | * | * |
| Jones HS | All students | 150 | 80.7 | 4.0 | 1.3 | 14.0 | 158 | 70.9 | 8.9 | 0.0 | 20.3 |
| | Afr. Amer. | 116 | 81.0 | 4.3 | 1.7 | 12.9 | 113 | 75.2 | 8.0 | 0.0 | 16.8 |
| | Hispanic | 34 | 79.4 | 2.9 | 0.0 | 17.6 | 44 | 59.1 | 11.4 | 0.0 | 29.5 |
| | Pac. Isl. | | | | | | 1 | * | * | * | * |
| | Econ. Disadv. | 103 | 81.6 | 2.9 | 1.0 | 14.6 | 118 | 74.6 | 7.6 | 0.0 | 17.8 |
| | ELL Ever | 4 | * | * | * | * | 19 | 36.8 | 21.1 | 0.0 | 42.1 |
| | SWD | 37 | 67.6 | 10.8 | 0.0 | 21.6 | 26 | 65.4 | 11.5 | 0.0 | 23.1 |
| Jordan HS | All students | 223 | 98.2 | 0.0 | 0.0 | 1.8 | 288 | 98.3 | 0.7 | 0.0 | 1.0 |
| | Afr. Amer. | 105 | 98.1 | 0.0 | 0.0 | 1.9 | 179 | 98.3 | 0.0 | 0.0 | 1.7 |
| | Asian | 1 | * | * | * | * | 1 | * | * | * | * |
| | Hispanic | 113 | 98.2 | 0.0 | 0.0 | 1.8 | 106 | 98.1 | 1.9 | 0.0 | 0.0 |
| | White | 4 | * | * | * | * | 2 | * | * | * | * |
| | Econ. Disadv. | 190 | 97.9 | 0.0 | 0.0 | 2.1 | 219 | 98.2 | 0.9 | 0.0 | 0.9 |
| | ELL Ever | 13 | 100.0 | 0.0 | 0.0 | 0.0 | 12 | 100.0 | 0.0 | 0.0 | 0.0 |
| SWD | 31 | 100.0 | 0.0 | 0.0 | 0.0 | 42 | 97.6 | 2.4 | 0.0 | 0.0 | |
| Kashmere HS | All students | 119 | 68.9 | 5.9 | 0.0 | 25.2 | 125 | 76.8 | 9.6 | 0.8 | 12.8 |
| | Afr. Amer. | 101 | 72.3 | 5.0 | 0.0 | 22.8 | 113 | 77.9 | 8.8 | 0.0 | 13.3 |
| | Amer. Ind. | 1 | * | * | * | * | | | | | |
| | Hispanic | 17 | 47.1 | 11.8 | 0.0 | 41.2 | 11 | 63.6 | 18.2 | 9.1 | 9.1 |
| | White | | | | | | 1 | * | * | * | * |
| | Econ. Disadv. | 88 | 75.0 | 3.4 | 0.0 | 21.6 | 93 | 78.5 | 10.8 | 1.1 | 9.7 |
| | ELL Ever | 6 | * | * | * | * | 3 | * | * | * | * |
| | SWD | 29 | 51.7 | 3.4 | 0.0 | 44.8 | 35 | 91.4 | 5.7 | 0.0 | 2.9 |

* Masked: n<10 Blanks: No data

2011 and 2012 Four-Year Graduation Summary: With Exclusions (Grades 9 - 12)
(for state accountability in 2011 and subsequent years)
Standard Education Program

| District/Campus | Group | Class of 2012 | | | | | Class of 2011 | | | | |
|-----------------|---------------|---------------|-----------------|----------------|----------|--------------|---------------|-----------------|----------------|----------|--------------|
| | | Class | Graduation Rate | Continuer Rate | GED Rate | Dropout Rate | Class | Graduation Rate | Continuer Rate | GED Rate | Dropout Rate |
| Lamar HS | All students | 607 | 93.1 | 2.6 | 1.0 | 3.3 | 759 | 93.7 | 3.4 | 0.1 | 2.8 |
| | Afr. Amer. | 134 | 96.3 | 1.5 | 0.7 | 1.5 | 212 | 97.2 | 0.9 | 0.0 | 1.9 |
| | Amer. Ind. | | | | | | 2 | * | * | * | * |
| | Asian | 18 | 94.4 | 0.0 | 0.0 | 5.6 | 3 | * | * | * | * |
| | Hispanic | 202 | 90.6 | 4.5 | 0.0 | 5.0 | 240 | 90.0 | 7.1 | 0.0 | 2.9 |
| | Pac. Isl. | 21 | 100.0 | 0.0 | 0.0 | 0.0 | 27 | 100.0 | 0.0 | 0.0 | 0.0 |
| | Two or More | 7 | * | * | * | * | 1 | * | * | * | * |
| | White | 225 | 92.4 | 2.2 | 2.2 | 3.1 | 274 | 93.4 | 2.6 | 0.4 | 3.6 |
| | Econ. Disadv. | 245 | 91.8 | 2.9 | 0.8 | 4.5 | 326 | 92.0 | 4.9 | 0.0 | 3.1 |
| | ELL Ever | 37 | 73.0 | 10.8 | 0.0 | 16.2 | 34 | 64.7 | 26.5 | 0.0 | 8.8 |
| | SWD | 28 | 71.4 | 10.7 | 3.6 | 14.3 | 36 | 72.2 | 22.2 | 0.0 | 5.6 |
| Lee HS | All students | 329 | 82.4 | 9.1 | 0.3 | 8.2 | 337 | 67.1 | 14.8 | 0.9 | 17.2 |
| | Afr. Amer. | 32 | 84.4 | 9.4 | 0.0 | 6.3 | 52 | 69.2 | 15.4 | 3.8 | 11.5 |
| | Amer. Ind. | 1 | * | * | * | * | 1 | * | * | * | * |
| | Asian | 20 | 75.0 | 15.0 | 0.0 | 10.0 | 20 | 90.0 | 10.0 | 0.0 | 0.0 |
| | Hispanic | 268 | 82.5 | 9.0 | 0.4 | 8.2 | 247 | 63.6 | 16.2 | 0.0 | 20.2 |
| | Pac. Isl. | | | | | | 2 | * | * | * | * |
| | Two or More | | | | | | 1 | * | * | * | * |
| | White | 8 | * | * | * | * | 14 | 78.6 | 0.0 | 7.1 | 14.3 |
| | Econ. Disadv. | 284 | 88.0 | 5.6 | 0.4 | 6.0 | 283 | 72.1 | 13.1 | 0.7 | 14.1 |
| | ELL Ever | 129 | 74.4 | 13.2 | 0.0 | 12.4 | 150 | 54.7 | 20.7 | 0.0 | 24.7 |
| | SWD | 27 | 70.4 | 11.1 | 0.0 | 18.5 | 36 | 61.1 | 22.2 | 0.0 | 16.7 |
| Madison HS | All students | 512 | 80.7 | 8.2 | 0.4 | 10.7 | 528 | 85.6 | 4.2 | 0.6 | 9.7 |
| | Afr. Amer. | 252 | 84.5 | 6.7 | 0.8 | 7.9 | 265 | 88.7 | 1.9 | 1.1 | 8.3 |
| | Amer. Ind. | 5 | * | * | * | * | 1 | * | * | * | * |
| | Asian | 2 | * | * | * | * | 3 | * | * | * | * |
| | Hispanic | 247 | 76.5 | 9.7 | 0.0 | 13.8 | 253 | 82.2 | 6.7 | 0.0 | 11.1 |
| | Pac. Isl. | | | | | | 1 | * | * | * | * |
| | Two or More | 4 | * | * | * | * | 4 | * | * | * | * |
| | White | 2 | * | * | * | * | 1 | * | * | * | * |
| | Econ. Disadv. | 418 | 82.3 | 7.7 | 0.0 | 10.0 | 391 | 89.0 | 4.1 | 0.3 | 6.6 |
| | ELL Ever | 52 | 55.8 | 15.4 | 0.0 | 28.8 | 71 | 71.8 | 9.9 | 0.0 | 18.3 |
| | SWD | 74 | 62.2 | 16.2 | 0.0 | 21.6 | 59 | 78.0 | 8.5 | 0.0 | 13.6 |
| Milby HS | All students | 488 | 83.8 | 5.5 | 0.2 | 10.5 | 530 | 84.3 | 5.1 | 1.3 | 9.2 |
| | Afr. Amer. | 17 | 88.2 | 5.9 | 0.0 | 5.9 | 13 | 84.6 | 0.0 | 0.0 | 15.4 |
| | Amer. Ind. | 2 | * | * | * | * | 2 | * | * | * | * |
| | Asian | 2 | * | * | * | * | 4 | * | * | * | * |
| | Hispanic | 463 | 83.4 | 5.6 | 0.2 | 10.8 | 507 | 84.2 | 5.3 | 1.4 | 9.1 |
| | Two or More | 1 | * | * | * | * | | | | | |
| | White | 3 | * | * | * | * | 4 | * | * | * | * |
| | Econ. Disadv. | 377 | 86.7 | 4.8 | 0.0 | 8.5 | 411 | 87.1 | 4.1 | 1.5 | 7.3 |
| | ELL Ever | 82 | 62.2 | 12.2 | 0.0 | 25.6 | 91 | 70.3 | 9.9 | 1.1 | 18.7 |
| | SWD | 38 | 73.7 | 13.2 | 0.0 | 13.2 | 48 | 77.1 | 6.3 | 0.0 | 16.7 |

* Masked: n<10 Blanks: No data

2011 and 2012 Four-Year Graduation Summary: With Exclusions (Grades 9 - 12)
(for state accountability in 2011 and subsequent years)
Standard Education Program

| District/Campus | Group | Class of 2012 | | | | | Class of 2011 | | | | |
|----------------------------------|---------------|---------------|-----------------|----------------|----------|--------------|---------------|-----------------|----------------|----------|--------------|
| | | Class | Graduation Rate | Continuer Rate | GED Rate | Dropout Rate | Class | Graduation Rate | Continuer Rate | GED Rate | Dropout Rate |
| Mount Carmel Academy | All students | 79 | 97.5 | 1.3 | 0.0 | 1.3 | 53 | 98.1 | 1.9 | 0.0 | 0.0 |
| | Afr. Amer. | 13 | 100.0 | 0.0 | 0.0 | 0.0 | 9 | * | * | * | * |
| | Asian | 2 | * | * | * | * | | | | | |
| | Hispanic | 54 | 96.3 | 1.9 | 0.0 | 1.9 | 35 | 97.1 | 2.9 | 0.0 | 0.0 |
| | Two or More | 7 | * | * | * | * | 2 | * | * | * | * |
| | White | 3 | * | * | * | * | 7 | * | * | * | * |
| | Econ. Disadv. | 44 | 97.7 | 2.3 | 0.0 | 0.0 | 26 | 100.0 | 0.0 | 0.0 | 0.0 |
| | ELL Ever | 3 | * | * | * | * | | | | | |
| | SWD | 2 | * | * | * | * | | | | | |
| Ninth Grade Prep. Acad. (closed) | All students | 14 | 0.0 | 0.0 | 0.0 | 100.0 | 7 | * | * | * | * |
| | Afr. Amer. | 2 | * | * | * | * | 0 | | | | |
| | Hispanic | 12 | 0.0 | 0.0 | 0.0 | 100.0 | 7 | * | * | * | * |
| | Econ. Disadv. | 8 | * | * | * | * | 6 | * | * | * | * |
| | ELL Ever | 1 | * | * | * | * | 1 | * | * | * | * |
| | SWD | 2 | * | * | * | * | 1 | * | * | * | * |
| North Houston Early College HS | All students | 86 | 95.3 | 2.3 | 0.0 | 2.3 | | | | | |
| | Afr. Amer. | 17 | 100.0 | 0.0 | 0.0 | 0.0 | | | | | |
| | Hispanic | 65 | 93.8 | 3.1 | 0.0 | 3.1 | | | | | |
| | White | 4 | * | * | * | * | | | | | |
| | Econ. Disadv. | 73 | 97.3 | 0.0 | 0.0 | 2.7 | | | | | |
| | ELL Ever | 2 | * | * | * | * | | | | | |
| | SWD | 1 | * | * | * | * | | | | | |
| Reagan HS | All students | 445 | 94.4 | 1.1 | 0.7 | 3.8 | 367 | 93.7 | 2.2 | 0.5 | 3.5 |
| | Afr. Amer. | 47 | 97.9 | 0.0 | 0.0 | 2.1 | 25 | 96.0 | 0.0 | 0.0 | 4.0 |
| | Asian | 1 | * | * | * | * | 2 | * | * | * | * |
| | Hispanic | 377 | 93.6 | 1.3 | 0.8 | 4.2 | 326 | 93.9 | 2.1 | 0.3 | 3.7 |
| | Two or More | 2 | * | * | * | * | 2 | * | * | * | * |
| | White | 18 | 100.0 | 0.0 | 0.0 | 0.0 | 12 | 91.7 | 0.0 | 8.3 | 0.0 |
| | Econ. Disadv. | 350 | 95.1 | 0.6 | 0.3 | 4.0 | 281 | 95.4 | 2.1 | 0.4 | 2.1 |
| | ELL Ever | 30 | 76.7 | 6.7 | 0.0 | 16.7 | 32 | 78.1 | 6.3 | 0.0 | 15.6 |
| | SWD | 42 | 85.7 | 4.8 | 2.4 | 7.1 | 39 | 84.6 | 2.6 | 0.0 | 12.8 |
| Rogers, T.H. | All students | 6 | * | * | * | * | 3 | * | * | * | * |
| | Afr. Amer. | 1 | * | * | * | * | 1 | * | * | * | * |
| | Hispanic | 4 | * | * | * | * | 1 | * | * | * | * |
| | White | 1 | * | * | * | * | 1 | * | * | * | * |
| | Econ. Disadv. | 5 | * | * | * | * | 2 | * | * | * | * |
| | ELL Ever | 1 | * | * | * | * | | | | | |
| | SWD | 6 | * | * | * | * | 3 | * | * | * | * |

* Masked: n<10 Blanks: No data

2011 and 2012 Four-Year Graduation Summary: With Exclusions (Grades 9 - 12)
(for state accountability in 2011 and subsequent years)
Standard Education Program

| District/Campus | Group | Class of 2012 | | | | | Class of 2011 | | | | |
|--|---------------|---------------|-----------------|----------------|----------|--------------|---------------|-----------------|----------------|----------|--------------|
| | | Class | Graduation Rate | Continuer Rate | GED Rate | Dropout Rate | Class | Graduation Rate | Continuer Rate | GED Rate | Dropout Rate |
| Scarborough HS | All students | 153 | 86.3 | 2.0 | 0.0 | 11.8 | 164 | 79.3 | 12.8 | 1.2 | 6.7 |
| | Afr. Amer. | 41 | 85.4 | 0.0 | 0.0 | 14.6 | 56 | 83.9 | 8.9 | 1.8 | 5.4 |
| | Asian | 2 | * | * | * | * | 1 | * | * | * | * |
| | Hispanic | 96 | 86.5 | 1.0 | 0.0 | 12.5 | 96 | 76.0 | 14.6 | 1.0 | 8.3 |
| | Two or More | 1 | * | * | * | * | | | | | |
| | White | 13 | 84.6 | 15.4 | 0.0 | 0.0 | 11 | 81.8 | 18.2 | 0.0 | 0.0 |
| | Econ. Disadv. | 117 | 89.7 | 0.0 | 0.0 | 10.3 | 128 | 82.8 | 10.9 | 0.8 | 5.5 |
| | ELL Ever | 20 | 80.0 | 5.0 | 0.0 | 15.0 | 24 | 50.0 | 33.3 | 4.2 | 12.5 |
| | SWD | 20 | 90.0 | 0.0 | 0.0 | 10.0 | 26 | 69.2 | 23.1 | 0.0 | 7.7 |
| Sharpstown HS | All students | 280 | 81.8 | 8.6 | 0.4 | 9.3 | 241 | 73.4 | 12.4 | 0.4 | 13.7 |
| | Afr. Amer. | 79 | 77.2 | 11.4 | 0.0 | 11.4 | 69 | 62.3 | 14.5 | 0.0 | 23.2 |
| | Amer. Ind. | 1 | * | * | * | * | | | | | |
| | Asian | 6 | * | * | * | * | 7 | * | * | * | * |
| | Hispanic | 187 | 83.4 | 7.0 | 0.5 | 9.1 | 155 | 78.1 | 11.6 | 0.0 | 10.3 |
| | Pac. Isl. | | | | | | 2 | * | * | * | * |
| | Two or More | 1 | * | * | * | * | | | | | |
| | White | 6 | * | * | * | * | 8 | * | * | * | * |
| | Econ. Disadv. | 252 | 84.1 | 7.1 | 0.4 | 8.3 | 192 | 80.2 | 10.4 | 0.0 | 9.4 |
| | ELL Ever | 79 | 74.7 | 15.2 | 0.0 | 10.1 | 60 | 70.0 | 15.0 | 0.0 | 15.0 |
| SWD | 42 | 66.7 | 16.7 | 0.0 | 16.7 | 32 | 56.3 | 31.3 | 0.0 | 12.5 | |
| Sharpstown International (081 and 452) | All students | 75 | 97.3 | 2.7 | 0.0 | 0.0 | 52 | 90.4 | 3.8 | 0.0 | 5.8 |
| | Afr. Amer. | 9 | * | * | * | * | 12 | 100.0 | 0.0 | 0.0 | 0.0 |
| | Asian | 8 | * | * | * | * | 5 | * | * | * | * |
| | Hispanic | 58 | 96.6 | 3.4 | 0.0 | 0.0 | 34 | 91.2 | 2.9 | 0.0 | 5.9 |
| | Two or More | | | | | | 1 | * | * | * | * |
| | Econ. Disadv. | 74 | 97.3 | 2.7 | 0.0 | 0.0 | 47 | 89.4 | 4.3 | 0.0 | 6.4 |
| | ELL Ever | 13 | 100.0 | 0.0 | 0.0 | 0.0 | 10 | 70.0 | 10.0 | 0.0 | 20.0 |
| | SWD | 2 | * | * | * | * | 2 | * | * | * | * |
| Sterling HS | All students | 226 | 79.2 | 4.4 | 0.0 | 16.4 | 261 | 87.0 | 3.4 | 0.0 | 9.6 |
| | Afr. Amer. | 166 | 77.7 | 4.8 | 0.0 | 17.5 | 202 | 90.6 | 2.0 | 0.0 | 7.4 |
| | Amer. Ind. | 2 | * | * | * | * | 1 | * | * | * | * |
| | Asian | 1 | * | * | * | * | 1 | * | * | * | * |
| | Hispanic | 55 | 87.3 | 1.8 | 0.0 | 10.9 | 56 | 76.8 | 7.1 | 0.0 | 16.1 |
| | White | 2 | * | * | * | * | 1 | * | * | * | * |
| | Econ. Disadv. | 167 | 76.0 | 4.8 | 0.0 | 19.2 | 171 | 87.1 | 2.9 | 0.0 | 9.9 |
| | ELL Ever | 13 | 76.9 | 0.0 | 0.0 | 23.1 | 12 | 41.7 | 16.7 | 0.0 | 41.7 |
| | SWD | 36 | 50.0 | 11.1 | 0.0 | 38.9 | 38 | 73.7 | 10.5 | 0.0 | 15.8 |

* Masked: n<10 Blanks: No data

2011 and 2012 Four-Year Graduation Summary: With Exclusions (Grades 9 - 12)
(for state accountability in 2011 and subsequent years)
Standard Education Program

| District/Campus | Group | Class of 2012 | | | | | Class of 2011 | | | | |
|-----------------|---------------|---------------|-----------------|----------------|----------|--------------|---------------|-----------------|----------------|----------|--------------|
| | | Class | Graduation Rate | Continuer Rate | GED Rate | Dropout Rate | Class | Graduation Rate | Continuer Rate | GED Rate | Dropout Rate |
| Waltrip HS | All students | 398 | 82.4 | 5.0 | 1.5 | 11.1 | 436 | 83.9 | 7.1 | 0.9 | 8.0 |
| | Afr. Amer. | 52 | 88.5 | 3.8 | 0.0 | 7.7 | 60 | 85.0 | 6.7 | 0.0 | 8.3 |
| | Amer. Ind. | 4 | * | * | * | * | | | | | |
| | Asian | | | | | | 1 | * | * | * | * |
| | Hispanic | 277 | 81.6 | 5.8 | 1.1 | 11.6 | 329 | 82.1 | 7.9 | 0.9 | 9.1 |
| | Two or More | 3 | * | * | * | * | 2 | * | * | * | * |
| | White | 62 | 79.0 | 3.2 | 4.8 | 12.9 | 44 | 95.5 | 2.3 | 2.3 | 0.0 |
| | Econ. Disadv. | 272 | 87.5 | 4.8 | 0.7 | 7.0 | 311 | 83.9 | 6.8 | 0.3 | 9.0 |
| | ELL Ever | 26 | 57.7 | 26.9 | 0.0 | 15.4 | 44 | 54.5 | 15.9 | 0.0 | 29.5 |
| SWD | 30 | 66.7 | 6.7 | 0.0 | 26.7 | 30 | 53.3 | 30.0 | 0.0 | 16.7 | |
| Washington HS | All students | 192 | 75.5 | 9.9 | 2.6 | 12.0 | 193 | 78.2 | 9.3 | 1.0 | 11.4 |
| | Afr. Amer. | 129 | 77.5 | 8.5 | 1.6 | 12.4 | 154 | 79.9 | 8.4 | 0.6 | 11.0 |
| | Amer. Ind. | 3 | * | * | * | * | 3 | * | * | * | * |
| | Hispanic | 50 | 74.0 | 14.0 | 2.0 | 10.0 | 28 | 75.0 | 10.7 | 3.6 | 10.7 |
| | Pac. Isl. | 3 | * | * | * | * | 2 | * | * | * | * |
| | Two or More | | | | | | 1 | * | * | * | * |
| | White | 7 | * | * | * | * | 5 | * | * | * | * |
| | Econ. Disadv. | 160 | 78.8 | 10.0 | 1.3 | 10.0 | 135 | 83.0 | 11.1 | 0.7 | 5.2 |
| | ELL Ever | 9 | * | * | * | * | 6 | * | * | * | * |
| SWD | 24 | 50.0 | 29.2 | 0.0 | 20.8 | 24 | 62.5 | 20.8 | 0.0 | 16.7 | |
| Westbury HS | All students | 516 | 82.8 | 3.7 | 0.6 | 13.0 | 461 | 77.2 | 6.7 | 0.2 | 15.8 |
| | Afr. Amer. | 244 | 82.4 | 3.7 | 0.8 | 13.1 | 214 | 77.1 | 6.1 | 0.0 | 16.8 |
| | Amer. Ind. | 6 | * | * | * | * | | | | | |
| | Asian | 34 | 79.4 | 0.0 | 0.0 | 20.6 | 14 | 71.4 | 14.3 | 0.0 | 14.3 |
| | Hispanic | 218 | 83.5 | 4.1 | 0.5 | 11.9 | 220 | 78.2 | 6.8 | 0.5 | 14.5 |
| | Two or More | 3 | * | * | * | * | 1 | * | * | * | * |
| | White | 10 | 100.0 | 0.0 | 0.0 | 0.0 | 12 | 66.7 | 8.3 | 0.0 | 25.0 |
| | Other | 1 | * | * | * | * | | | | | |
| | Econ. Disadv. | 386 | 86.3 | 3.4 | 0.3 | 10.1 | 337 | 77.4 | 7.4 | 0.3 | 14.8 |
| | ELL Ever | 72 | 69.4 | 4.2 | 0.0 | 26.4 | 79 | 64.6 | 11.4 | 0.0 | 24.1 |
| SWD | 51 | 70.6 | 13.7 | 2.0 | 13.7 | 49 | 46.9 | 20.4 | 0.0 | 32.7 | |
| Westside HS | All students | 742 | 90.7 | 3.5 | 0.4 | 5.4 | 709 | 91.0 | 2.8 | 0.7 | 5.5 |
| | Afr. Amer. | 248 | 91.5 | 3.6 | 0.4 | 4.4 | 261 | 90.0 | 2.3 | 0.4 | 7.3 |
| | Amer. Ind. | 3 | * | * | * | * | 1 | * | * | * | * |
| | Asian | 52 | 90.4 | 3.8 | 0.0 | 5.8 | 48 | 97.9 | 2.1 | 0.0 | 0.0 |
| | Hispanic | 249 | 87.6 | 4.4 | 0.8 | 7.2 | 210 | 89.0 | 2.9 | 0.5 | 7.6 |
| | Pac. Isl. | 1 | * | * | * | * | 4 | * | * | * | * |
| | Two or More | 6 | * | * | * | * | 6 | * | * | * | * |
| | White | 183 | 94.5 | 1.6 | 0.0 | 3.8 | 178 | 92.7 | 3.9 | 1.7 | 1.7 |
| | Other | | | | | | 1 | * | * | * | * |
| | Econ. Disadv. | 340 | 90.0 | 4.7 | 0.6 | 4.7 | 347 | 92.5 | 1.4 | 0.6 | 5.5 |
| | ELL Ever | 49 | 75.5 | 16.3 | 0.0 | 8.2 | 53 | 69.8 | 9.4 | 0.0 | 20.8 |
| SWD | 61 | 80.3 | 9.8 | 0.0 | 9.8 | 42 | 76.2 | 11.9 | 0.0 | 11.9 | |

* Masked: n<10 Blanks: No data

2011 and 2012 Four-Year Graduation Summary: With Exclusions (Grades 9 - 12)

(for state accountability in 2011 and subsequent years)

Standard Education Program

| District/Campus | Group | Class of 2012 | | | | | Class of 2011 | | | | |
|-----------------|---------------|---------------|-----------------|----------------|----------|--------------|---------------|-----------------|----------------|----------|--------------|
| | | Class | Graduation Rate | Continuer Rate | GED Rate | Dropout Rate | Class | Graduation Rate | Continuer Rate | GED Rate | Dropout Rate |
| Wheatley HS | All students | 228 | 73.2 | 9.6 | 1.3 | 15.8 | 230 | 73.5 | 7.8 | 0.0 | 18.7 |
| | Afr. Amer. | 149 | 77.2 | 6.0 | 0.7 | 16.1 | 163 | 76.1 | 5.5 | 0.0 | 18.4 |
| | Amer. Ind. | | | | | | 1 | * | * | * | * |
| | Asian | 1 | * | * | * | * | | | | | |
| | Hispanic | 77 | 64.9 | 16.9 | 2.6 | 15.6 | 66 | 66.7 | 13.6 | 0.0 | 19.7 |
| | White | 1 | * | * | * | * | | | | | |
| | Econ. Disadv. | 171 | 78.9 | 8.2 | 0.6 | 12.3 | 174 | 78.2 | 8.0 | 0.0 | 13.8 |
| | ELL Ever | 30 | 60.0 | 23.3 | 0.0 | 16.7 | 20 | 60.0 | 30.0 | 0.0 | 10.0 |
| | SWD | 45 | 71.1 | 15.6 | 0.0 | 13.3 | 36 | 61.1 | 13.9 | 0.0 | 25.0 |
| Worthing HS | All students | 227 | 70.5 | 4.4 | 1.3 | 23.8 | 258 | 80.2 | 4.3 | 0.0 | 15.5 |
| | Afr. Amer. | 206 | 70.4 | 4.9 | 1.5 | 23.3 | 245 | 81.2 | 4.1 | 0.0 | 14.7 |
| | Amer. Ind. | 1 | * | * | * | * | | | | | |
| | Hispanic | 18 | 72.2 | 0.0 | 0.0 | 27.8 | 11 | 63.6 | 9.1 | 0.0 | 27.3 |
| | Two or More | | | | | | 1 | * | * | * | * |
| | White | 2 | * | * | * | * | 1 | * | * | * | * |
| | Econ. Disadv. | 161 | 70.2 | 5.0 | 0.6 | 24.2 | 177 | 80.8 | 4.5 | 0.0 | 14.7 |
| | ELL Ever | 6 | * | * | * | * | 3 | * | * | * | * |
| | SWD | 47 | 55.3 | 10.6 | 0.0 | 34.0 | 50 | 60.0 | 12.0 | 0.0 | 28.0 |
| Yates HS | All students | 251 | 86.9 | 3.2 | 1.2 | 8.8 | 347 | 80.7 | 1.7 | 0.3 | 17.3 |
| | Afr. Amer. | 241 | 86.7 | 3.3 | 0.8 | 9.1 | 318 | 81.4 | 1.6 | 0.3 | 16.7 |
| | Hispanic | 9 | * | * | * | * | 23 | 73.9 | 4.3 | 0.0 | 21.7 |
| | Pac. Isl. | | | | | | 3 | * | * | * | * |
| | White | 1 | * | * | * | * | 3 | * | * | * | * |
| | Econ. Disadv. | 182 | 87.9 | 3.3 | 1.1 | 7.7 | 218 | 82.1 | 1.8 | 0.0 | 16.1 |
| | ELL Ever | 3 | * | * | * | * | 9 | * | * | * | * |
| | SWD | 48 | 81.3 | 8.3 | 0.0 | 10.4 | 71 | 69.0 | 2.8 | 1.4 | 26.8 |

* Masked: n<10 Blanks: No data

2011 and 2012 Four-Year Graduation Summary: With Exclusions (Grades 9 - 12)
(for state accountability in 2011 and subsequent years)
Alternative Education Program or Not Rated

| District/Campus | Group | Class of 2012 | | | | | Class of 2011 | | | | |
|---|---------------|---------------|-----------------|----------------|----------|--------------|---------------|-----------------|----------------|----------|--------------|
| | | Class | Graduation Rate | Continuer Rate | GED Rate | Dropout Rate | Class | Graduation Rate | Continuer Rate | GED Rate | Dropout Rate |
| Advanced Virtual Academy (451 and 462) | All students | 226 | 6.6 | 35.4 | 1.3 | 56.6 | 131 | 3.1 | 48.1 | 1.5 | 47.3 |
| | Afr. Amer. | 84 | 11.9 | 29.8 | 1.2 | 57.1 | 46 | 6.5 | 54.3 | 2.2 | 37.0 |
| | Amer. Ind. | 1 | * | * | * | * | 1 | * | * | * | * |
| | Hispanic | 135 | 3.7 | 39.3 | 0.7 | 56.3 | 80 | 1.3 | 46.3 | 0.0 | 52.5 |
| | White | 6 | * | * | * | * | 4 | * | * | * | * |
| | Econ. Disadv. | 130 | 6.9 | 26.2 | 2.3 | 64.6 | 60 | 1.7 | 46.7 | 0.0 | 51.7 |
| | ELL Ever | 43 | 2.3 | 39.5 | 0.0 | 58.1 | 20 | 0.0 | 45.0 | 0.0 | 55.0 |
| | SWD | 27 | 3.7 | 11.1 | 0.0 | 85.2 | 15 | 6.7 | 13.3 | 0.0 | 80.0 |
| Beechnut Academy | All students | 1 | * | * | * | * | 1 | * | * | * | * |
| | Hispanic | 1 | * | * | * | * | 1 | * | * | * | * |
| | Econ. Disadv. | 1 | * | * | * | * | 1 | * | * | * | * |
| | ELL Ever | 1 | * | * | * | * | 1 | * | * | * | * |
| CLC HS/DeVry Acad. (closed) | All students | 78 | 62.8 | 0.0 | 3.8 | 33.3 | 156 | 67.3 | 1.3 | 1.3 | 30.1 |
| | Afr. Amer. | 43 | 60.5 | 0.0 | 4.7 | 34.9 | 94 | 55.3 | 2.1 | 2.1 | 40.4 |
| | Asian | | | | | | 1 | * | * | * | * |
| | Hispanic | 31 | 71.0 | 0.0 | 0.0 | 29.0 | 58 | 84.5 | 0.0 | 0.0 | 15.5 |
| | Pac. Isl. | 1 | * | * | * | * | 1 | * | * | * | * |
| | White | 3 | * | * | * | * | 2 | * | * | * | * |
| | Econ. Disadv. | 72 | 68.1 | 0.0 | 2.8 | 29.2 | 126 | 70.6 | 1.6 | 0.8 | 27.0 |
| | ELL Ever | 7 | * | * | * | * | 13 | 61.5 | 0.0 | 0.0 | 38.5 |
| SWD | 1 | * | * | * | * | 6 | * | * | * | * | |
| Community Services | All students | 29 | 0.0 | 0.0 | 17.2 | 82.8 | 40 | 0.0 | 0.0 | 27.5 | 72.5 |
| | Afr. Amer. | 11 | 0.0 | 0.0 | 18.2 | 81.8 | 14 | 0.0 | 0.0 | 21.4 | 78.6 |
| | Hispanic | 11 | 0.0 | 0.0 | 18.2 | 81.8 | 17 | 0.0 | 0.0 | 23.5 | 76.5 |
| | White | 7 | * | * | * | * | 8 | * | * | * | * |
| | Other | | | | | | 1 | * | * | * | * |
| | Econ. Disadv. | 7 | * | * | * | * | 7 | * | * | * | * |
| | ELL Ever | 4 | * | * | * | * | 4 | * | * | * | * |
| | SWD | 5 | * | * | * | * | 11 | 0.0 | 0.0 | 27.3 | 72.7 |
| Harper | All students | 18 | 27.8 | 11.1 | 0.0 | 61.1 | 12 | 25.0 | 16.7 | 0.0 | 58.3 |
| | Afr. Amer. | 12 | 25.0 | 8.3 | 0.0 | 66.7 | 4 | * | * | * | * |
| | Hispanic | 4 | * | * | * | * | 6 | * | * | * | * |
| | White | 2 | * | * | * | * | 2 | * | * | * | * |
| | Econ. Disadv. | 14 | 28.6 | 7.1 | 0.0 | 64.3 | 10 | 20.0 | 20.0 | 0.0 | 60.0 |
| | ELL Ever | 1 | * | * | * | * | 3 | * | * | * | * |
| | SWD | 18 | 27.8 | 11.1 | 0.0 | 61.1 | 11 | 27.3 | 9.1 | 0.0 | 63.6 |
| HCC Life Skills | All students | 12 | 0.0 | 100.0 | 0.0 | 0.0 | 10 | 0.0 | 100.0 | 0.0 | 0.0 |
| | Afr. Amer. | 4 | * | * | * | * | 4 | * | * | * | * |
| | Asian | | | | | | 1 | * | * | * | * |
| | Hispanic | 6 | * | * | * | * | 4 | * | * | * | * |
| | Pac. Isl. | | | | | | 1 | * | * | * | * |
| | White | 2 | * | * | * | * | | | | | |
| | Econ. Disadv. | 9 | * | * | * | * | 8 | * | * | * | * |
| | ELL Ever | 5 | * | * | * | * | 3 | * | * | * | * |
| SWD | 12 | 0.0 | 100.0 | 0.0 | 0.0 | 10 | 0.0 | 100.0 | 0.0 | 0.0 | |

* Masked: n<10 Blanks: no data

2011 and 2012 Four-Year Graduation Summary: With Exclusions (Grades 9 - 12)
(for state accountability in 2011 and subsequent years)
Alternative Education Program or Not Rated

| District/Campus | Group | Class of 2012 | | | | | Class of 2011 | | | | |
|------------------------------|---------------|---------------|-----------------|----------------|----------|--------------|---------------|-----------------|----------------|----------|--------------|
| | | Class | Graduation Rate | Continuer Rate | GED Rate | Dropout Rate | Class | Graduation Rate | Continuer Rate | GED Rate | Dropout Rate |
| Hope Academy | All students | 61 | 50.8 | 9.8 | 0.0 | 39.3 | 61 | 37.7 | 29.5 | 3.3 | 29.5 |
| | Afr. Amer. | 59 | 50.8 | 10.2 | 0.0 | 39.0 | 55 | 36.4 | 29.1 | 1.8 | 32.7 |
| | Hispanic | 2 | * | * | * | * | 3 | * | * | * | * |
| | Two or More | | | | | | 3 | * | * | * | * |
| | Econ. Disadv. | 45 | 53.3 | 8.9 | 0.0 | 37.8 | 41 | 43.9 | 31.7 | 4.9 | 19.5 |
| | SWD | 1 | * | * | * | * | 3 | * | * | * | * |
| JJAEP | All students | 1 | * | * | * | * | | | | | |
| | Afr. Amer. | 1 | * | * | * | * | | | | | |
| | Econ. Disadv. | 1 | * | * | * | * | | | | | |
| Leader's Academy HS (closed) | All students | 25 | 72.0 | 0.0 | 0.0 | 28.0 | 59 | 76.3 | 0.0 | 0.0 | 23.7 |
| | Afr. Amer. | 15 | 80.0 | 0.0 | 0.0 | 20.0 | 44 | 77.3 | 0.0 | 0.0 | 22.7 |
| | Hispanic | 9 | * | * | * | * | 14 | 78.6 | 0.0 | 0.0 | 21.4 |
| | Two or More | 1 | * | * | * | * | | | | | |
| | White | | | | | | 1 | * | * | * | * |
| | Econ. Disadv. | 17 | 88.2 | 0.0 | 0.0 | 11.8 | 33 | 78.8 | 0.0 | 0.0 | 21.2 |
| | ELL Ever | 2 | * | * | * | * | 3 | * | * | * | * |
| | SWD | 1 | * | * | * | * | 1 | * | * | * | * |
| Liberty HS | All students | 89 | 2.2 | 75.3 | 0.0 | 22.5 | 72 | 0.0 | 79.2 | 0.0 | 20.8 |
| | Afr. Amer. | 4 | * | * | * | * | 5 | * | * | * | * |
| | Asian | 5 | * | * | * | * | 3 | * | * | * | * |
| | Hispanic | 79 | 2.5 | 73.4 | 0.0 | 24.1 | 64 | 0.0 | 76.6 | 0.0 | 23.4 |
| | White | 1 | * | * | * | * | | | | | |
| | Econ. Disadv. | 69 | 2.9 | 69.6 | 0.0 | 27.5 | 57 | 0.0 | 84.2 | 0.0 | 15.8 |
| | ELL Ever | 83 | 2.4 | 75.9 | 0.0 | 21.7 | 72 | 0.0 | 79.2 | 0.0 | 20.8 |
| | SWD | 2 | * | * | * | * | 1 | * | * | * | * |
| New Aspirations HS (closed) | All students | 107 | 16.8 | 0.0 | 5.6 | 77.6 | 119 | 21.0 | 28.6 | 5.9 | 44.5 |
| | Afr. Amer. | 39 | 12.8 | 0.0 | 5.1 | 82.1 | 43 | 16.3 | 23.3 | 4.7 | 55.8 |
| | Asian | 1 | * | * | * | * | | | | | |
| | Hispanic | 55 | 16.4 | 0.0 | 3.6 | 80.0 | 66 | 21.2 | 31.8 | 6.1 | 40.9 |
| | Two or More | | | | | | 1 | * | * | * | * |
| | White | 12 | 33.3 | 0.0 | 16.7 | 50.0 | 9 | * | * | * | * |
| | Econ. Disadv. | 72 | 18.1 | 0.0 | 4.2 | 77.8 | 64 | 28.1 | 26.6 | 3.1 | 42.2 |
| | ELL Ever | 7 | * | * | * | * | 17 | 17.6 | 52.9 | 0.0 | 29.4 |
| SWD | 1 | * | * | * | * | 8 | * | * | * | * | |
| REACH HS | All students | 145 | 35.9 | 17.9 | 0.0 | 46.2 | 148 | 35.1 | 19.6 | 2.0 | 43.2 |
| | Afr. Amer. | 52 | 36.5 | 13.5 | 0.0 | 50.0 | 40 | 27.5 | 25.0 | 2.5 | 45.0 |
| | Asian | 1 | * | * | * | * | | | | | |
| | Hispanic | 89 | 34.8 | 21.3 | 0.0 | 43.8 | 105 | 38.1 | 17.1 | 1.9 | 42.9 |
| | White | 3 | * | * | * | * | 3 | * | * | * | * |
| | Econ. Disadv. | 107 | 43.0 | 18.7 | 0.0 | 38.3 | 106 | 44.3 | 17.0 | 0.9 | 37.7 |
| | ELL Ever | 22 | 22.7 | 36.4 | 0.0 | 40.9 | 22 | 13.6 | 27.3 | 0.0 | 59.1 |
| | SWD | 37 | 45.9 | 10.8 | 0.0 | 43.2 | 26 | 42.3 | 3.8 | 3.8 | 50.0 |

* Masked: n<10 Blanks: no data

2011 and 2012 Annual Dropout Summary: With Exclusions (Grades 7 - 8)

(for state accountability in 2011 and subsequent years)

Standard Education Program

| District/campus | Year | All students | Afr. Amer. | Amer. Ind. | Asian | Hispanic | Pac. Isl. | Two or more | White | Econ. Disadv. | ELL | SWD |
|-------------------------------|-------|--------------|------------|------------|-------|----------|-----------|-------------|-------|---------------|-----|-----|
| HISD | 11-12 | 0.4 | 0.5 | 1.4 | 0.2 | 0.4 | 0.0 | 0.0 | 0.2 | 0.4 | 0.4 | 0.3 |
| | 10-11 | 0.3 | 0.4 | 0.0 | 0.0 | 0.3 | 0.0 | 0.0 | 0.2 | 0.3 | 0.4 | 0.4 |
| Attucks MS | 11-12 | 0.8 | 0.7 | | * | 1.2 | | * | * | 0.9 | 0.0 | 1.4 |
| | 10-11 | 0.2 | 0.0 | * | * | 1.1 | | | * | 0.2 | 3.2 | 0.0 |
| Black MS | 11-12 | 0.2 | 0.0 | * | * | 0.3 | | 0.0 | 0.0 | 0.3 | 0.0 | 0.0 |
| | 10-11 | 0.3 | 0.0 | * | | 0.4 | * | 0.0 | 0.0 | 0.3 | 0.0 | 0.0 |
| Briar meadow | 11-12 | 0.0 | 0.0 | | 0.0 | 0.0 | | * | 0.0 | 0.0 | * | |
| | 10-11 | 0.0 | 0.0 | | 0.0 | 0.0 | | * | 0.0 | 0.0 | * | * |
| Burbank MS | 11-12 | 0.3 | 1.2 | * | | 0.2 | * | * | 0.0 | 0.3 | 0.5 | 0.0 |
| | 10-11 | 0.2 | 0.0 | * | | 0.3 | * | | 0.0 | 0.2 | 0.5 | 0.0 |
| Clifton MS | 11-12 | 0.1 | 0.0 | * | * | 0.2 | | 0.0 | 0.0 | 0.2 | 0.0 | 0.0 |
| | 10-11 | 0.3 | 0.6 | * | * | 0.2 | | 0.0 | 0.0 | 0.3 | 0.0 | 2.8 |
| Cullen MS | 11-12 | 0.0 | 0.0 | * | * | 0.0 | | * | * | 0.0 | 0.0 | 0.0 |
| | 10-11 | 0.2 | 0.3 | * | * | 0.0 | | * | * | 0.2 | 0.0 | 0.0 |
| Deady MS | 11-12 | 0.1 | 0.0 | | | 0.2 | | | 0.0 | 0.2 | 0.0 | 0.0 |
| | 10-11 | 0.1 | 0.0 | * | * | 0.2 | | | 0.0 | 0.2 | 0.0 | 0.0 |
| Dominion | 11-12 | 0.0 | 0.0 | | | 0.0 | | * | | 0.0 | * | * |
| | 10-11 | 0.0 | 0.0 | | | 0.0 | | | * | 0.0 | * | 0.0 |
| Dowling MS | 11-12 | 0.5 | 0.4 | 0.0 | | 0.5 | | * | 0.0 | | 0.4 | 0.6 |
| | 10-11 | 0.4 | 0.0 | 0.0 | * | 0.5 | | * | 16.7 | 0.1 | 2.0 | 0.0 |
| Edison MS | 11-12 | 0.3 | * | * | | 0.3 | | | * | 0.3 | 1.1 | 0.0 |
| | 10-11 | 0.0 | * | * | | 0.0 | | | | 0.0 | 0.0 | 0.0 |
| Energized MS (342) | 11-12 | 0.0 | 0.0 | | | 0.0 | | | * | 0.0 | 0.0 | |
| | 10-11 | 0.0 | 0.0 | * | | 0.0 | | | * | 0.0 | 0.0 | * |
| Energized for STEM C MS (459) | 11-12 | 0.0 | 0.0 | | | 0.0 | | | * | 0.0 | 0.0 | * |
| | 10-11 | | | | | | | | | | | |
| Energized for STEM W MS (390) | 11-12 | 0.0 | 0.0 | * | * | 0.0 | | | * | 0.0 | 0.0 | * |
| | 10-11 | 0.0 | 0.0 | * | * | 0.0 | | | | 0.0 | 0.0 | |
| Fleming MS | 11-12 | 0.6 | 0.9 | * | | 0.0 | * | | * | 0.4 | 0.0 | 1.3 |
| | 10-11 | 0.0 | 0.0 | * | | 0.0 | | | | 0.0 | 0.0 | 0.0 |
| Fondren MS | 11-12 | 0.8 | 0.4 | * | 2.2 | 0.8 | * | * | 0.0 | 0.8 | 1.3 | 0.0 |
| | 10-11 | 0.6 | 1.0 | * | 0.0 | 0.4 | | * | 0.0 | 0.6 | 0.0 | 1.5 |
| Fonville MS | 11-12 | 0.4 | 1.6 | * | * | 0.3 | | * | 0.0 | 0.4 | 0.4 | 0.0 |
| | 10-11 | 0.2 | 0.0 | * | * | 0.3 | | | 0.0 | 0.2 | 0.4 | 1.0 |
| Grady MS | 11-12 | 0.3 | 0.0 | * | 0.0 | 0.6 | | * | 0.0 | 0.0 | 0.0 | 0.0 |
| | 10-11 | 0.0 | 0.0 | * | 0.0 | 0.0 | * | * | 0.0 | 0.0 | 0.0 | 0.0 |
| Gregory-Lincoln | 11-12 | 0.0 | 0.0 | * | * | 0.0 | | * | 0.0 | 0.0 | 0.0 | 0.0 |
| | 10-11 | 0.4 | 0.0 | | * | 1.2 | | * | 0.0 | 0.4 | 0.0 | 0.0 |
| Hamilton MS | 11-12 | 0.1 | 0.0 | * | 0.0 | 0.1 | | 0.0 | 0.0 | 0.1 | 0.0 | 0.0 |
| | 10-11 | 0.0 | 0.0 | * | 0.0 | 0.0 | * | 0.0 | 0.0 | 0.0 | 0.0 | 0.0 |
| Hartman MS | 11-12 | 0.1 | 0.3 | * | * | 0.0 | * | * | 0.0 | 0.1 | 0.0 | 0.0 |
| | 10-11 | 0.2 | 0.0 | * | * | 0.3 | * | * | 0.0 | 0.2 | 0.5 | 1.0 |

* Masked: n < 5 Blanks: no data

2011 and 2012 Annual Dropout Summary: With Exclusions (Grades 7 - 8)

(for state accountability in 2011 and subsequent years)

Standard Education Program

| District/campus | Year | All students | Afr. Amer. | Amer. Ind. | Asian | Hispanic | Pac. Isl. | Two or more | White | Econ. Disadv. | ELL | SWD |
|-------------------|-------|--------------|------------|------------|-------|----------|-----------|-------------|-------|---------------|-----|-----|
| Henry MS | 11-12 | 1.0 | 1.7 | | * | 0.8 | | * | 10.0 | 1.1 | 0.8 | 0.0 |
| | 10-11 | 0.0 | 0.0 | 0.0 | * | 0.0 | | | 0.0 | 0.0 | 0.0 | 0.0 |
| Hogg MS | 11-12 | 0.4 | 0.0 | * | * | 0.4 | | * | 0.0 | 0.2 | 1.3 | 0.0 |
| | 10-11 | 0.2 | 0.0 | * | * | 0.2 | | * | 0.0 | 0.2 | 0.0 | 0.0 |
| Holland MS | 11-12 | 0.5 | 0.5 | | * | 0.5 | | * | 0.0 | 0.4 | 0.0 | 0.0 |
| | 10-11 | 0.7 | 0.0 | | * | 1.0 | * | * | 0.0 | 0.2 | 0.0 | 3.3 |
| Jackson MS | 11-12 | 0.4 | 0.0 | * | * | 0.5 | | * | 0.0 | 0.4 | 0.8 | 0.0 |
| | 10-11 | 0.1 | 0.0 | | * | 0.2 | | | * | 0.2 | 0.0 | 0.0 |
| Johnston MS | 11-12 | 0.1 | 0.3 | 0.0 | 0.0 | 0.0 | | 0.0 | 0.0 | 0.2 | 0.0 | 1.6 |
| | 10-11 | 0.0 | 0.0 | * | 0.0 | 0.0 | * | 0.0 | 0.0 | 0.0 | 0.0 | 0.0 |
| Kaleidoscope | 11-12 | 0.0 | * | | | 0.0 | | | | 0.0 | 0.0 | |
| | 10-11 | 0.0 | * | | | 0.0 | | | * | 0.0 | 0.0 | |
| Kandy Stripe | 11-12 | 0.0 | 0.0 | | | 0.0 | | | | 0.0 | 0.0 | * |
| | 10-11 | 0.0 | 0.0 | | | 0.0 | | | | 0.0 | * | * |
| Key MS | 11-12 | 0.5 | 0.7 | * | * | 0.0 | | | 0.0 | 0.5 | 0.0 | 0.0 |
| | 10-11 | 0.5 | 0.3 | * | * | 0.8 | | | 0.0 | 0.3 | 4.5 | 0.0 |
| Lanier MS | 11-12 | 0.0 | 0.0 | * | 0.0 | 0.0 | * | 0.0 | 0.0 | 0.0 | 0.0 | 0.0 |
| | 10-11 | 0.0 | 0.0 | * | 0.0 | 0.0 | * | 0.0 | 0.0 | 0.0 | 0.0 | 0.0 |
| Long MS | 11-12 | 0.4 | 1.8 | * | 0.0 | 0.2 | | * | 0.0 | 0.4 | 0.5 | 1.7 |
| | 10-11 | 0.6 | 0.0 | | 0.0 | 0.7 | | * | 0.0 | 0.6 | 0.5 | 0.0 |
| Marshall MS | 11-12 | 0.3 | 0.0 | | | 0.3 | | | 0.0 | 0.1 | 0.0 | 0.0 |
| | 10-11 | 0.0 | 0.0 | | | 0.0 | * | | 0.0 | 0.0 | 0.0 | 0.0 |
| McReynolds MS | 11-12 | 0.7 | 1.4 | | | 0.6 | | | 0.0 | 0.8 | 1.2 | 0.0 |
| | 10-11 | 0.2 | 0.0 | | | 0.2 | | | 0.0 | 0.2 | 0.0 | 0.0 |
| Ortiz MS | 11-12 | 0.0 | 0.0 | * | 0.0 | 0.0 | * | * | 0.0 | 0.0 | 0.0 | 0.0 |
| | 10-11 | 0.3 | 0.0 | | 0.0 | 0.4 | 0.0 | | 0.0 | 0.3 | 0.0 | 0.0 |
| Pershing MS | 11-12 | 0.1 | 0.0 | * | 0.0 | 0.2 | | 0.0 | 0.0 | 0.1 | 0.0 | 0.0 |
| | 10-11 | 0.0 | 0.0 | * | 0.0 | 0.0 | * | 0.0 | 0.0 | 0.0 | 0.0 | 0.0 |
| Pilgrim Academy | 11-12 | 0.0 | 0.0 | | | 0.0 | | | 0.0 | 0.0 | 0.0 | 0.0 |
| | 10-11 | 0.0 | 0.0 | | | 0.0 | | * | * | 0.0 | 0.0 | 0.0 |
| Pin Oak MS | 11-12 | 0.0 | 0.0 | * | 0.0 | 0.0 | * | 0.0 | 0.0 | 0.0 | 0.0 | 0.0 |
| | 10-11 | 0.0 | 0.0 | * | 0.0 | 0.0 | * | 0.0 | 0.0 | 0.0 | 0.0 | 0.0 |
| Project Chrysalis | 11-12 | 0.0 | * | * | * | 0.0 | | | * | 0.0 | * | |
| | 10-11 | 0.0 | * | | * | 0.0 | | | * | 0.0 | 0.0 | |
| Revere MS | 11-12 | 0.5 | 0.0 | * | 3.1 | 0.7 | | 0.0 | 0.0 | 0.5 | 1.4 | 1.5 |
| | 10-11 | 0.4 | 0.0 | * | 0.0 | 0.7 | | 0.0 | 0.0 | 0.3 | 1.5 | 1.4 |
| Rice | 11-12 | 0.3 | 0.0 | * | 0.0 | 0.6 | | | 0.0 | 0.0 | 0.0 | 0.0 |
| | 10-11 | 0.0 | 0.0 | * | 0.0 | 0.0 | | | 0.0 | 0.0 | 0.0 | 0.0 |
| Rogers, T. H. | 11-12 | 0.4 | 3.4 | * | 0.0 | 0.0 | * | 0.0 | 0.0 | 1.3 | | 0.0 |
| | 10-11 | 0.0 | 0.0 | * | 0.0 | 0.0 | | 0.0 | 0.0 | 0.0 | | 0.0 |
| Rusk | 11-12 | 0.9 | * | | * | 1.0 | | | * | 1.1 | 0.0 | * |
| | 10-11 | 0.0 | * | | | 0.0 | | * | | 0.0 | 0.0 | * |

* Masked: n < 5 Blanks: no data

2011 and 2012 Annual Dropout Summary: With Exclusions (Grades 7 - 8)

(for state accountability in 2011 and subsequent years)

Standard Education Program

| District/campus | Year | All students | Afr. Amer. | Amer. Ind. | Asian | Hispanic | Pac. Isl. | Two or more | White | Econ. Disadv. | ELL | SWD |
|--------------------------------|-------|--------------|------------|------------|-------|----------|-----------|-------------|-------|---------------|-----|-----|
| Ryan MS | 11-12 | 0.9 | 1.1 | | * | 0.0 | | * | | 0.5 | 0.0 | 2.6 |
| | 10-11 | 0.7 | 0.4 | | * | 2.3 | | * | 0.0 | 0.8 | 0.0 | 0.0 |
| Sharpstown International (081) | 11-12 | 0.0 | 0.0 | * | 0.0 | 0.0 | | * | 0.0 | 0.0 | 0.0 | 0.0 |
| | 10-11 | 0.2 | 0.0 | | 0.0 | 0.3 | | * | 0.0 | 0.2 | 0.0 | 0.0 |
| Stevenson MS | 11-12 | 0.1 | 0.0 | * | 0.0 | 0.0 | * | * | 6.3 | 0.1 | 0.0 | 0.0 |
| | 10-11 | 0.2 | 0.0 | * | 0.0 | 0.2 | * | * | 0.0 | 0.2 | 0.0 | 0.0 |
| Sugar Grove MS | 11-12 | 0.8 | 0.8 | | * | 0.8 | | * | 0.0 | 0.9 | 1.0 | 0.0 |
| | 10-11 | 0.0 | 0.0 | | | 0.0 | | | * | 0.0 | 0.0 | 0.0 |
| Texas Connections Acad | 11-12 | 1.6 | 3.1 | 0.0 | 0.0 | 3.9 | * | 0.0 | 0.6 | 0.5 | * | 0.0 |
| | 10-11 | 0.4 | 0.0 | 0.0 | 0.0 | 0.9 | * | 0.0 | 0.4 | 0.0 | | |
| Thomas MS | 11-12 | 0.0 | 0.0 | * | * | 0.0 | | | 0.0 | 0.0 | 0.0 | 0.0 |
| | 10-11 | 0.0 | 0.0 | | * | 0.0 | | * | 0.0 | 0.0 | 0.0 | 0.0 |
| Welch MS | 11-12 | 0.0 | 0.0 | * | 0.0 | 0.0 | | 0.0 | 0.0 | 0.0 | 0.0 | 0.0 |
| | 10-11 | 0.0 | 0.0 | | 0.0 | 0.0 | | 0.0 | 0.0 | 0.0 | 0.0 | 0.0 |
| West Briar MS | 11-12 | 0.0 | 0.0 | * | 0.0 | 0.0 | * | 0.0 | 0.0 | 0.0 | 0.0 | 0.0 |
| | 10-11 | 0.1 | 0.3 | * | 0.0 | 0.0 | | 0.0 | 0.0 | 0.2 | 0.0 | 0.0 |
| Wharton | 11-12 | 0.0 | 0.0 | | * | 0.0 | | | * | 0.0 | 0.0 | 0.0 |
| | 10-11 | 0.0 | 0.0 | | * | 0.0 | | | * | 0.0 | 0.0 | * |
| Williams MS | 11-12 | 0.3 | 0.5 | | | 0.0 | | * | * | 0.3 | 0.0 | 0.0 |
| | 10-11 | 0.3 | 0.5 | | | 0.0 | | | 0.0 | 0.3 | 0.0 | 0.0 |
| Wilson | 11-12 | 0.0 | * | | | 0.0 | | | 0.0 | 0.0 | * | * |
| | 10-11 | 0.0 | * | | * | 0.0 | | | 0.0 | 0.0 | * | * |
| Woodson MS | 11-12 | 0.7 | 0.4 | * | | 3.8 | | * | * | 0.4 | 0.0 | 0.0 |
| | 10-11 | 0.5 | 0.3 | | | 1.5 | * | * | 0.0 | 0.5 | 6.7 | 0.0 |

* Masked: n < 5 Blanks: no data

2011 and 2012 Annual Dropout Summary: With Exclusions (Grades 7 - 8)

(for state accountability in 2011 and subsequent years)

Alternative Education Program or Not Rated

| District/campus | Year | All students | Afr. Amer. | Amer. Ind. | Asian | Hispanic | Pac. Isl. | Two or more | White | Econ. Disadv. | ELL | SWD |
|--------------------|-------|--------------|------------|------------|-------|----------|-----------|-------------|-------|---------------|------|-----|
| Beechnut Academy | 11-12 | 0.0 | 0.0 | * | * | 0.0 | | * | 0.0 | 0.0 | 0.0 | 0.0 |
| | 10-11 | 0.0 | 0.0 | * | * | 0.0 | | * | 0.0 | 0.0 | 0.0 | 0.0 |
| Community Services | 11-12 | 7.5 | 0.0 | | | 11.1 | | | * | 6.3 | 20.0 | 0.0 |
| | 10-11 | 1.1 | 0.0 | | | 0.0 | | * | 7.7 | 0.0 | 0.0 | 5.6 |
| Harper | 11-12 | 0.0 | 0.0 | | | 0.0 | | | * | 0.0 | * | 0.0 |
| | 10-11 | 2.8 | 0.0 | | | 5.9 | | | * | 3.4 | * | 2.8 |
| JJAEP | 11-12 | 0.0 | 0.0 | | | 0.0 | | | | 0.0 | 0.0 | * |
| | 10-11 | 0.0 | 0.0 | | * | 0.0 | | | | 0.0 | 0.0 | * |
| High School Ahead | 11-12 | 2.4 | 4.0 | | * | 1.1 | | | 0.0 | 2.4 | 0.0 | 2.3 |
| | 10-11 | 3.0 | 4.9 | * | | 1.6 | | | 0.0 | 3.0 | 2.6 | 0.0 |
| Inspired West | 11-12 | 1.8 | 1.0 | | | 3.2 | * | | * | 1.3 | 0.0 | 0.0 |
| | 10-11 | 0.0 | 0.0 | | | 0.0 | | * | | 0.0 | 0.0 | 0.0 |
| Las Americas MS | 11-12 | 0.0 | 0.0 | * | 0.0 | 0.0 | | | 0.0 | 0.0 | 0.0 | |
| | 10-11 | 0.0 | * | * | 0.0 | 0.0 | | | | 0.0 | 0.0 | |
| Provision | 11-12 | 3.4 | 2.1 | * | | 5.6 | | | * | 2.7 | 0.0 | 0.0 |
| | 10-11 | 0.0 | 0.0 | * | | 0.0 | | | * | 0.0 | 0.0 | 0.0 |
| SOAR | 11-12 | | | | | | | | | | | |
| | 10-11 | | | | | | | | | | | |
| Young Scholars | 11-12 | 0.0 | 0.0 | | | * | | | | 0.0 | | |
| | 10-11 | 0.0 | 0.0 | | | * | | | * | 0.0 | | * |

* Masked: $n < 5$

Blanks: no data

2011 and 2012 Five-Year Graduation Summary: No Exclusions (Grades 9 - 12)

(for comparison to 2010 and prior years)

Standard Education Program

| District/Campus | Group | Class of 2011 | | | | | Class of 2010 | | | | |
|-----------------|---------------|---------------|-----------------|----------------|----------|--------------|---------------|-----------------|----------------|----------|--------------|
| | | Class | Graduation Rate | Continuer Rate | GED Rate | Dropout Rate | Class | Graduation Rate | Continuer Rate | GED Rate | Dropout Rate |
| HISD | All students | 11,457 | 82.8 | 2.2 | 1.0 | 13.9 | 10,871 | 80.6 | 3.0 | 1.1 | 15.4 |
| | Afr. Amer. | 3,724 | 80.3 | 1.7 | 1.0 | 17.0 | 3,431 | 78.9 | 2.4 | 1.1 | 17.6 |
| | Amer. Ind. | 21 | 76.2 | 0.0 | 0.0 | 23.8 | 21 | 85.7 | 0.0 | 4.8 | 9.5 |
| | As./Pac. Isl. | 443 | 95.0 | 1.6 | 0.2 | 3.2 | 460 | 94.6 | 1.3 | 0.2 | 3.9 |
| | Hispanic | 6,131 | 81.7 | 2.9 | 0.9 | 14.4 | 5,825 | 78.6 | 3.7 | 0.9 | 16.8 |
| | Two or More | 59 | 89.8 | 0.0 | 3.4 | 6.8 | | | | | |
| | White | 1,075 | 92.8 | 0.7 | 1.6 | 4.8 | 1,134 | 90.4 | 1.9 | 1.9 | 5.8 |
| | Other | 4 | * | * | * | * | | | | | |
| | Econ. disadv. | 7,616 | 85.1 | 2.0 | 0.7 | 12.2 | 6,784 | 83.2 | 3.2 | 0.6 | 13.0 |
| | ELL Ever | 1,426 | 64.4 | 9.0 | 0.4 | 26.2 | 1,276 | 56.4 | 10.6 | 0.2 | 32.8 |
| | SWD | 1,148 | 71.4 | 6.4 | 0.7 | 21.4 | 1,144 | 67.0 | 7.8 | 0.5 | 24.7 |
| Austin HS | All students | 462 | 83.5 | 4.5 | 0.4 | 11.5 | 479 | 86.8 | 1.3 | 0.4 | 11.5 |
| | Afr. Amer. | 16 | 87.5 | 0.0 | 0.0 | 12.5 | 17 | 76.5 | 0.0 | 0.0 | 23.5 |
| | Amer. Ind. | 1 | * | * | * | * | 1 | * | * | * | * |
| | As./Pac. Isl. | 1 | * | * | * | * | 1 | * | * | * | * |
| | Hispanic | 440 | 83.2 | 4.8 | 0.5 | 11.6 | 454 | 87.2 | 1.3 | 0.4 | 11.0 |
| | White | 4 | * | * | * | * | 6 | * | * | * | * |
| | Econ. disadv. | 394 | 88.1 | 2.5 | 0.5 | 8.9 | 418 | 90.7 | 1.0 | 0.0 | 8.4 |
| | ELL Ever | 102 | 67.6 | 10.8 | 0.0 | 21.6 | 79 | 79.7 | 1.3 | 0.0 | 19.0 |
| | SWD | 40 | 85.0 | 7.5 | 0.0 | 7.5 | 41 | 80.5 | 2.4 | 0.0 | 17.1 |
| Bellaire HS | All students | 777 | 92.1 | 1.0 | 0.8 | 6.0 | 731 | 91.0 | 1.5 | 1.0 | 6.6 |
| | Afr. Amer. | 103 | 85.4 | 0.0 | 1.9 | 12.6 | 102 | 89.2 | 0.0 | 1.0 | 9.8 |
| | Amer. Ind. | 3 | * | * | * | * | 2 | * | * | * | * |
| | As./Pac. Isl. | 158 | 96.2 | 1.9 | 0.6 | 1.3 | 156 | 97.4 | 0.6 | 0.0 | 1.9 |
| | Hispanic | 224 | 87.1 | 2.2 | 0.4 | 10.3 | 185 | 80.0 | 2.7 | 1.6 | 15.7 |
| | Two or More | 24 | 91.7 | 0.0 | 0.0 | 8.3 | | | | | |
| | White | 265 | 96.6 | 0.0 | 0.8 | 2.6 | 286 | 95.5 | 1.7 | 0.7 | 2.1 |
| | Econ. disadv. | 245 | 87.3 | 1.6 | 0.8 | 10.2 | 174 | 84.5 | 2.9 | 1.1 | 11.5 |
| | ELL Ever | 53 | 66.0 | 9.4 | 0.0 | 24.5 | 46 | 54.3 | 13.0 | 0.0 | 32.6 |
| | SWD | 37 | 81.1 | 8.1 | 2.7 | 8.1 | 40 | 67.5 | 10.0 | 2.5 | 20.0 |
| Carnegie HS | All students | 80 | 100.0 | 0.0 | 0.0 | 0.0 | 80 | 100.0 | 0.0 | 0.0 | 0.0 |
| | Afr. Amer. | 10 | 100.0 | 0.0 | 0.0 | 0.0 | 17 | 100.0 | 0.0 | 0.0 | 0.0 |
| | As./Pac. Isl. | 7 | * | * | * | * | 7 | * | * | * | * |
| | Hispanic | 20 | 100.0 | 0.0 | 0.0 | 0.0 | 25 | 100.0 | 0.0 | 0.0 | 0.0 |
| | White | 43 | 100.0 | 0.0 | 0.0 | 0.0 | 31 | 100.0 | 0.0 | 0.0 | 0.0 |
| | Econ. disadv. | 11 | 100.0 | 0.0 | 0.0 | 0.0 | 26 | 100.0 | 0.0 | 0.0 | 0.0 |
| | SWD | 3 | * | * | * | * | 1 | * | * | * | * |

* Masked: n<10 Blanks: no data

2011 and 2012 Five-Year Graduation Summary: No Exclusions (Grades 9 - 12)

(for comparison to 2010 and prior years)

Standard Education Program

| District/Campus | Group | Class of 2011 | | | | | Class of 2010 | | | | |
|-----------------|---------------|---------------|-----------------|----------------|----------|--------------|---------------|-----------------|----------------|----------|--------------|
| | | Class | Graduation Rate | Continuer Rate | GED Rate | Dropout Rate | Class | Graduation Rate | Continuer Rate | GED Rate | Dropout Rate |
| Challenge HS | All students | 84 | 97.6 | 0.0 | 0.0 | 2.4 | 74 | 97.3 | 0.0 | 1.4 | 1.4 |
| | Afr. Amer. | 16 | 100.0 | 0.0 | 0.0 | 0.0 | 19 | 100.0 | 0.0 | 0.0 | 0.0 |
| | As./Pac. Isl. | 2 | * | * | * | * | 5 | * | * | * | * |
| | Hispanic | 48 | 95.8 | 0.0 | 0.0 | 4.2 | 37 | 97.3 | 0.0 | 2.7 | 0.0 |
| | Two or More | 1 | * | * | * | * | | | | | |
| | White | 17 | 100.0 | 0.0 | 0.0 | 0.0 | 13 | 92.3 | 0.0 | 0.0 | 7.7 |
| | Econ. disadv. | 48 | 100.0 | 0.0 | 0.0 | 0.0 | 34 | 97.1 | 0.0 | 2.9 | 0.0 |
| | ELL Ever | 1 | * | * | * | * | | | | | |
| | SWD | 2 | * | * | * | * | 3 | * | * | * | * |
| Chavez HS | All students | 603 | 85.1 | 1.7 | 0.2 | 13.1 | 620 | 84.8 | 1.6 | 0.8 | 12.7 |
| | Afr. Amer. | 80 | 90.0 | 1.3 | 0.0 | 8.8 | 80 | 95.0 | 1.3 | 1.3 | 2.5 |
| | Amer. Ind. | | | | | | 2 | * | * | * | * |
| | As./Pac. Isl. | 19 | 78.9 | 5.3 | 0.0 | 15.8 | 14 | 92.9 | 0.0 | 0.0 | 7.1 |
| | Hispanic | 491 | 84.7 | 1.6 | 0.2 | 13.4 | 509 | 83.1 | 1.8 | 0.8 | 14.3 |
| | Two or More | 1 | * | * | * | * | | | | | |
| | White | 10 | 80.0 | 0.0 | 0.0 | 20.0 | 15 | 80.0 | 0.0 | 0.0 | 20.0 |
| | Other | 2 | * | * | * | * | | | | | |
| | Econ. disadv. | 485 | 89.1 | 1.0 | 0.2 | 9.7 | 459 | 87.4 | 1.5 | 0.4 | 10.7 |
| | ELL Ever | 95 | 70.5 | 5.3 | 0.0 | 24.2 | 81 | 59.3 | 6.2 | 0.0 | 34.6 |
| | SWD | 46 | 73.9 | 6.5 | 0.0 | 19.6 | 50 | 70.0 | 12.0 | 0.0 | 18.0 |
| Davis HS | All students | 374 | 91.4 | 5.1 | 0.3 | 3.2 | 333 | 91.0 | 4.2 | 0.0 | 4.8 |
| | Afr. Amer. | 27 | 85.2 | 7.4 | 0.0 | 7.4 | 49 | 89.8 | 6.1 | 0.0 | 4.1 |
| | Amer. Ind. | 1 | * | * | * | * | | | | | |
| | As./Pac. Isl. | | | | | | 2 | * | * | * | * |
| | Hispanic | 344 | 91.9 | 4.9 | 0.3 | 2.9 | 275 | 91.3 | 4.0 | 0.0 | 4.7 |
| | White | 2 | * | * | * | * | 7 | * | * | * | * |
| | Econ. disadv. | 343 | 92.7 | 4.7 | 0.3 | 2.3 | 290 | 93.4 | 3.4 | 0.0 | 3.1 |
| | ELL Ever | 59 | 88.1 | 10.2 | 0.0 | 1.7 | 40 | 75.0 | 15.0 | 0.0 | 10.0 |
| | SWD | 47 | 87.2 | 6.4 | 0.0 | 6.4 | 40 | 82.5 | 10.0 | 0.0 | 7.5 |
| DeBakey HS | All students | 210 | 100.0 | 0.0 | 0.0 | 0.0 | 189 | 100.0 | 0.0 | 0.0 | 0.0 |
| | Afr. Amer. | 48 | 100.0 | 0.0 | 0.0 | 0.0 | 56 | 100.0 | 0.0 | 0.0 | 0.0 |
| | Amer. Ind. | | | | | | 1 | * | * | * | * |
| | As./Pac. Isl. | 84 | 100.0 | 0.0 | 0.0 | 0.0 | 69 | 100.0 | 0.0 | 0.0 | 0.0 |
| | Hispanic | 61 | 100.0 | 0.0 | 0.0 | 0.0 | 50 | 100.0 | 0.0 | 0.0 | 0.0 |
| | Two or More | 2 | * | * | * | * | | | | | |
| | White | 15 | 100.0 | 0.0 | 0.0 | 0.0 | 13 | 100.0 | 0.0 | 0.0 | 0.0 |
| | Econ. disadv. | 107 | 100.0 | 0.0 | 0.0 | 0.0 | 96 | 100.0 | 0.0 | 0.0 | 0.0 |
| | ELL Ever | | | | | | 1 | * | * | * | * |

* Masked: n<10 Blanks: no data

2011 and 2012 Five-Year Graduation Summary: No Exclusions (Grades 9 - 12)

(for comparison to 2010 and prior years)

Standard Education Program

| District/Campus | Group | Class of 2011 | | | | | Class of 2010 | | | | |
|------------------|---------------|---------------|-----------------|----------------|----------|--------------|---------------|-----------------|----------------|----------|--------------|
| | | Class | Graduation Rate | Continuer Rate | GED Rate | Dropout Rate | Class | Graduation Rate | Continuer Rate | GED Rate | Dropout Rate |
| Eastwood Academy | All students | 63 | 100.0 | 0.0 | 0.0 | 0.0 | 62 | 100.0 | 0.0 | 0.0 | 0.0 |
| | Afr. Amer. | 2 | * | * | * | * | 1 | * | * | * | * |
| | As./Pac. Isl. | 1 | * | * | * | * | | | | | |
| | Hispanic | 60 | 100.0 | 0.0 | 0.0 | 0.0 | 60 | 100.0 | 0.0 | 0.0 | 0.0 |
| | White | | | | | | 1 | * | * | * | * |
| | Econ. disadv. | 45 | 100.0 | 0.0 | 0.0 | 0.0 | 52 | 100.0 | 0.0 | 0.0 | 0.0 |
| | ELL Ever | 1 | * | * | * | * | 2 | * | * | * | * |
| | SWD | | | | | | 1 | * | * | * | * |
| Furr HS | All students | 193 | 91.2 | 2.1 | 0.5 | 6.2 | 154 | 90.9 | 0.6 | 0.0 | 8.4 |
| | Afr. Amer. | 46 | 87.0 | 4.3 | 0.0 | 8.7 | 30 | 90.0 | 0.0 | 0.0 | 10.0 |
| | Hispanic | 142 | 92.3 | 1.4 | 0.7 | 5.6 | 120 | 91.7 | 0.0 | 0.0 | 8.3 |
| | White | 5 | * | * | * | * | 4 | * | * | * | * |
| | Econ. disadv. | 176 | 93.2 | 1.1 | 0.6 | 5.1 | 135 | 93.3 | 0.7 | 0.0 | 5.9 |
| | ELL Ever | 36 | 83.3 | 2.8 | 0.0 | 13.9 | 18 | 72.2 | 0.0 | 0.0 | 27.8 |
| | SWD | 34 | 88.2 | 5.9 | 0.0 | 5.9 | 22 | 86.4 | 4.5 | 0.0 | 9.1 |
| | HSLECJ | All students | 121 | 98.3 | 0.0 | 0.0 | 1.7 | 118 | 100.0 | 0.0 | 0.0 |
| Afr. Amer. | | 30 | 100.0 | 0.0 | 0.0 | 0.0 | 30 | 100.0 | 0.0 | 0.0 | 0.0 |
| As./Pac. Isl. | | | | | | | 1 | * | * | * | * |
| Hispanic | | 85 | 98.8 | 0.0 | 0.0 | 1.2 | 82 | 100.0 | 0.0 | 0.0 | 0.0 |
| Two or More | | 2 | * | * | * | * | | | | | |
| White | | 4 | * | * | * | * | 5 | * | * | * | * |
| Econ. disadv. | | 76 | 98.7 | 0.0 | 0.0 | 1.3 | 85 | 100.0 | 0.0 | 0.0 | 0.0 |
| SWD | | 2 | * | * | * | * | | | | | |
| HSPVA | All students | 151 | 100.0 | 0.0 | 0.0 | 0.0 | 149 | 100.0 | 0.0 | 0.0 | 0.0 |
| | Afr. Amer. | 31 | 100.0 | 0.0 | 0.0 | 0.0 | 39 | 100.0 | 0.0 | 0.0 | 0.0 |
| | As./Pac. Isl. | 3 | * | * | * | * | 4 | * | * | * | * |
| | Hispanic | 37 | 100.0 | 0.0 | 0.0 | 0.0 | 26 | 100.0 | 0.0 | 0.0 | 0.0 |
| | Two or More | 1 | * | * | * | * | | | | | |
| | White | 79 | 100.0 | 0.0 | 0.0 | 0.0 | 80 | 100.0 | 0.0 | 0.0 | 0.0 |
| | Econ. disadv. | 32 | 100.0 | 0.0 | 0.0 | 0.0 | 20 | 100.0 | 0.0 | 0.0 | 0.0 |
| | ELL Ever | 2 | * | * | * | * | 1 | * | * | * | * |
| | SWD | 1 | * | * | * | * | 4 | * | * | * | * |
| Jones HS | All students | 162 | 70.4 | 3.7 | 0.0 | 25.9 | 160 | 68.8 | 1.3 | 1.9 | 28.1 |
| | Afr. Amer. | 116 | 75.0 | 1.7 | 0.0 | 23.3 | 109 | 76.1 | 0.0 | 0.9 | 22.9 |
| | As./Pac. Isl. | 1 | * | * | * | * | 2 | * | * | * | * |
| | Hispanic | 45 | 57.8 | 8.9 | 0.0 | 33.3 | 49 | 55.1 | 4.1 | 4.1 | 36.7 |
| | Econ. disadv. | 121 | 72.7 | 4.1 | 0.0 | 23.1 | 97 | 78.4 | 1.0 | 1.0 | 19.6 |
| | ELL Ever | 19 | 36.8 | 15.8 | 0.0 | 47.4 | 12 | 33.3 | 8.3 | 0.0 | 58.3 |
| | SWD | 27 | 66.7 | 7.4 | 0.0 | 25.9 | 33 | 75.8 | 3.0 | 0.0 | 21.2 |

* Masked: n<10 Blanks: no data

2011 and 2012 Five-Year Graduation Summary: No Exclusions (Grades 9 - 12)

(for comparison to 2010 and prior years)

Standard Education Program

| District/Campus | Group | Class of 2011 | | | | | Class of 2010 | | | | |
|-----------------|---------------|---------------|-----------------|----------------|----------|--------------|---------------|-----------------|----------------|----------|--------------|
| | | Class | Graduation Rate | Continuer Rate | GED Rate | Dropout Rate | Class | Graduation Rate | Continuer Rate | GED Rate | Dropout Rate |
| Jordan HS | All students | 288 | 99.0 | 0.0 | 0.0 | 1.0 | 280 | 97.5 | 0.7 | 0.0 | 1.8 |
| | Afr. Amer. | 181 | 98.3 | 0.0 | 0.0 | 1.7 | 149 | 98.7 | 0.0 | 0.0 | 1.3 |
| | As./Pac. Isl. | 1 | * | * | * | * | 1 | * | * | * | * |
| | Hispanic | 104 | 100.0 | 0.0 | 0.0 | 0.0 | 127 | 96.1 | 1.6 | 0.0 | 2.4 |
| | White | 2 | * | * | * | * | 3 | * | * | * | * |
| | Econ. disadv. | 218 | 99.1 | 0.0 | 0.0 | 0.9 | 194 | 97.4 | 1.0 | 0.0 | 1.5 |
| | ELL Ever | 12 | 100.0 | 0.0 | 0.0 | 0.0 | 15 | 100.0 | 0.0 | 0.0 | 0.0 |
| | SWD | 42 | 100.0 | 0.0 | 0.0 | 0.0 | 51 | 98.0 | 2.0 | 0.0 | 0.0 |
| Kashmere HS | All students | 126 | 80.2 | 0.8 | 0.8 | 18.3 | 119 | 68.9 | 5.9 | 2.5 | 22.7 |
| | Afr. Amer. | 114 | 81.6 | 0.9 | 0.0 | 17.5 | 103 | 71.8 | 4.9 | 2.9 | 20.4 |
| | Hispanic | 11 | 63.6 | 0.0 | 9.1 | 27.3 | 16 | 50.0 | 12.5 | 0.0 | 37.5 |
| | White | 1 | * | * | * | * | | | | | |
| | Econ. disadv. | 92 | 84.8 | 0.0 | 1.1 | 14.1 | 93 | 81.7 | 6.5 | 1.1 | 10.8 |
| | ELL Ever | 3 | * | * | * | * | 5 | * | * | * | * |
| | SWD | 37 | 89.2 | 2.7 | 0.0 | 8.1 | 35 | 62.9 | 8.6 | 0.0 | 28.6 |
| Lamar HS | All students | 769 | 94.7 | 1.2 | 0.3 | 3.9 | 666 | 92.9 | 0.6 | 0.8 | 5.7 |
| | Afr. Amer. | 215 | 96.7 | 0.5 | 0.0 | 2.8 | 178 | 91.6 | 0.0 | 0.6 | 7.9 |
| | Amer. Ind. | 2 | * | * | * | * | 2 | * | * | * | * |
| | As./Pac. Isl. | 31 | 100.0 | 0.0 | 0.0 | 0.0 | 31 | 96.8 | 3.2 | 0.0 | 0.0 |
| | Hispanic | 245 | 91.4 | 2.4 | 0.0 | 6.1 | 225 | 92.9 | 0.9 | 0.9 | 5.3 |
| | Two or More | 2 | * | * | * | * | | | | | |
| | White | 274 | 95.6 | 0.7 | 0.4 | 3.3 | 230 | 93.5 | 0.4 | 0.9 | 5.2 |
| | Econ. disadv. | 329 | 93.0 | 1.5 | 0.3 | 5.2 | 278 | 92.4 | 1.1 | 0.4 | 6.1 |
| | ELL Ever | 34 | 73.5 | 11.8 | 0.0 | 14.7 | 23 | 69.6 | 8.7 | 0.0 | 21.7 |
| SWD | 37 | 75.7 | 16.2 | 0.0 | 8.1 | 33 | 78.8 | 0.0 | 0.0 | 21.2 | |
| Lee HS | All students | 332 | 80.7 | 0.6 | 0.9 | 17.8 | 404 | 69.6 | 4.7 | 0.5 | 25.2 |
| | Afr. Amer. | 51 | 82.4 | 2.0 | 3.9 | 11.8 | 53 | 71.7 | 1.9 | 1.9 | 24.5 |
| | Amer. Ind. | 1 | * | * | * | * | 1 | * | * | * | * |
| | As./Pac. Isl. | 22 | 100.0 | 0.0 | 0.0 | 0.0 | 32 | 84.4 | 3.1 | 0.0 | 12.5 |
| | Hispanic | 242 | 78.5 | 0.4 | 0.0 | 21.1 | 304 | 67.4 | 5.6 | 0.0 | 27.0 |
| | Two or More | 1 | * | * | * | * | | | | | |
| | White | 15 | 80.0 | 0.0 | 6.7 | 13.3 | 14 | 71.4 | 0.0 | 7.1 | 21.4 |
| | Econ. disadv. | 283 | 83.7 | 0.7 | 0.7 | 14.8 | 309 | 77.3 | 2.6 | 0.0 | 20.1 |
| | ELL Ever | 146 | 73.3 | 0.7 | 0.0 | 26.0 | 174 | 51.7 | 9.8 | 0.0 | 38.5 |
| SWD | 34 | 82.4 | 0.0 | 0.0 | 17.6 | 33 | 63.6 | 3.0 | 0.0 | 33.3 | |

* Masked: n<10 Blanks: no data

2011 and 2012 Five-Year Graduation Summary: No Exclusions (Grades 9 - 12)

(for comparison to 2010 and prior years)

Standard Education Program

| District/Campus | Group | Class of 2011 | | | | | Class of 2010 | | | | |
|-----------------|---------------|---------------|-----------------|----------------|----------|--------------|---------------|-----------------|----------------|----------|--------------|
| | | Class | Graduation Rate | Continuer Rate | GED Rate | Dropout Rate | Class | Graduation Rate | Continuer Rate | GED Rate | Dropout Rate |
| Madison HS | All students | 544 | 86.6 | 2.2 | 0.9 | 10.3 | 484 | 81.0 | 1.2 | 1.2 | 16.5 |
| | Afr. Amer. | 277 | 87.7 | 2.2 | 1.4 | 8.7 | 254 | 81.9 | 1.6 | 1.6 | 15.0 |
| | Amer. Ind. | 1 | * | * | * | * | 2 | * | * | * | * |
| | As./Pac. Isl. | 4 | * | * | * | * | 2 | * | * | * | * |
| | Hispanic | 257 | 85.2 | 2.3 | 0.4 | 12.1 | 222 | 79.7 | 0.9 | 0.9 | 18.5 |
| | Two or More | 4 | * | * | * | * | | | | | |
| | White | 1 | * | * | * | * | 4 | * | * | * | * |
| | Econ. disadv. | 402 | 89.8 | 2.2 | 0.5 | 7.5 | 330 | 85.5 | 0.9 | 0.0 | 13.6 |
| | ELL Ever | 75 | 73.3 | 8.0 | 0.0 | 18.7 | 61 | 68.9 | 1.6 | 0.0 | 29.5 |
| | SWD | 67 | 74.6 | 9.0 | 0.0 | 16.4 | 65 | 66.2 | 3.1 | 1.5 | 29.2 |
| Milby HS | All students | 551 | 84.6 | 1.3 | 1.5 | 12.7 | 476 | 82.8 | 1.7 | 0.6 | 14.9 |
| | Afr. Amer. | 16 | 75.0 | 0.0 | 0.0 | 25.0 | 18 | 94.4 | 0.0 | 0.0 | 5.6 |
| | Amer. Ind. | 3 | * | * | * | * | | | | | |
| | As./Pac. Isl. | 4 | * | * | * | * | 6 | * | * | * | * |
| | Hispanic | 523 | 85.1 | 1.1 | 1.5 | 12.2 | 448 | 82.4 | 1.6 | 0.7 | 15.4 |
| | White | 5 | * | * | * | * | 4 | * | * | * | * |
| | Econ. disadv. | 421 | 87.6 | 0.7 | 1.7 | 10.0 | 350 | 85.1 | 1.7 | 0.3 | 12.9 |
| | ELL Ever | 99 | 72.7 | 3.0 | 1.0 | 23.2 | 72 | 61.1 | 4.2 | 0.0 | 34.7 |
| | SWD | 52 | 75.0 | 5.8 | 0.0 | 19.2 | 44 | 70.5 | 2.3 | 0.0 | 27.3 |
| Reagan HS | All students | 377 | 93.4 | 0.5 | 0.8 | 5.3 | 381 | 86.1 | 1.3 | 0.3 | 12.3 |
| | Afr. Amer. | 25 | 96.0 | 0.0 | 0.0 | 4.0 | 32 | 93.8 | 0.0 | 0.0 | 6.3 |
| | As./Pac. Isl. | 2 | * | * | * | * | 2 | * | * | * | * |
| | Hispanic | 336 | 93.2 | 0.6 | 0.6 | 5.7 | 324 | 86.4 | 1.2 | 0.0 | 12.3 |
| | Two or More | 2 | * | * | * | * | | | | | |
| | White | 12 | 91.7 | 0.0 | 8.3 | 0.0 | 23 | 69.6 | 4.3 | 4.3 | 21.7 |
| | Econ. disadv. | 287 | 95.5 | 0.3 | 0.7 | 3.5 | 254 | 87.8 | 1.6 | 0.4 | 10.2 |
| | ELL Ever | 33 | 78.8 | 3.0 | 0.0 | 18.2 | 38 | 63.2 | 7.9 | 0.0 | 28.9 |
| | SWD | 43 | 79.1 | 2.3 | 0.0 | 18.6 | 44 | 59.1 | 6.8 | 0.0 | 34.1 |
| Rogers, T. H. | All students | 2 | * | * | * | * | 15 | 0.0 | 100.0 | 0.0 | 0.0 |
| | Afr. Amer. | 1 | * | * | * | * | 3 | * | * | * | * |
| | Hispanic | 1 | * | * | * | * | 8 | * | * | * | * |
| | White | | | | | | 4 | * | * | * | * |
| | Econ. disadv. | 2 | * | * | * | * | 11 | 0.0 | 100.0 | 0.0 | 0.0 |
| | SWD | 2 | * | * | * | * | 15 | 0.0 | 100.0 | 0.0 | 0.0 |

* Masked: n<10 Blanks: no data

2011 and 2012 Five-Year Graduation Summary: No Exclusions (Grades 9 - 12)

(for comparison to 2010 and prior years)

Standard Education Program

| District/Campus | Group | Class of 2011 | | | | | Class of 2010 | | | | |
|-----------------|---------------|---------------|-----------------|----------------|----------|--------------|---------------|-----------------|----------------|----------|--------------|
| | | Class | Graduation Rate | Continuer Rate | GED Rate | Dropout Rate | Class | Graduation Rate | Continuer Rate | GED Rate | Dropout Rate |
| Scarborough HS | All students | 166 | 84.9 | 1.8 | 1.8 | 11.4 | 160 | 83.1 | 1.3 | 4.4 | 11.3 |
| | Afr. Amer. | 59 | 86.4 | 1.7 | 1.7 | 10.2 | 47 | 76.6 | 0.0 | 6.4 | 17.0 |
| | Amer. Ind. | | | | | | 1 | * | * | * | * |
| | As./Pac. Isl. | 1 | * | * | * | * | 2 | * | * | * | * |
| | Hispanic | 95 | 83.2 | 1.1 | 2.1 | 13.7 | 94 | 86.2 | 2.1 | 2.1 | 9.6 |
| | White | 11 | 90.9 | 9.1 | 0.0 | 0.0 | 16 | 81.3 | 0.0 | 12.5 | 6.3 |
| | Econ. disadv. | 129 | 87.6 | 1.6 | 1.6 | 9.3 | 120 | 88.3 | 1.7 | 3.3 | 6.7 |
| | ELL Ever | 22 | 68.2 | 4.5 | 4.5 | 22.7 | 16 | 62.5 | 12.5 | 0.0 | 25.0 |
| | SWD | 26 | 80.8 | 11.5 | 0.0 | 7.7 | 22 | 81.8 | 9.1 | 0.0 | 9.1 |
| Sharpstown HS | All students | 239 | 80.3 | 2.5 | 0.8 | 16.3 | 324 | 77.8 | 2.2 | 0.3 | 19.8 |
| | Afr. Amer. | 69 | 68.1 | 2.9 | 1.4 | 27.5 | 101 | 74.3 | 2.0 | 0.0 | 23.8 |
| | As./Pac. Isl. | 9 | * | * | * | * | 17 | 88.2 | 0.0 | 0.0 | 11.8 |
| | Hispanic | 154 | 85.7 | 1.9 | 0.0 | 12.3 | 200 | 78.5 | 2.0 | 0.5 | 19.0 |
| | White | 7 | * | * | * | * | 6 | * | * | * | * |
| | Econ. disadv. | 190 | 87.4 | 2.1 | 0.0 | 10.5 | 274 | 81.8 | 2.2 | 0.0 | 16.1 |
| | ELL Ever | 64 | 76.6 | 6.3 | 0.0 | 17.2 | 79 | 60.8 | 5.1 | 0.0 | 34.2 |
| | SWD | 33 | 63.6 | 12.1 | 0.0 | 24.2 | 34 | 67.6 | 2.9 | 0.0 | 29.4 |
| Sterling HS | All students | 270 | 87.4 | 1.1 | 0.0 | 11.5 | 216 | 83.8 | 2.3 | 0.5 | 13.4 |
| | Afr. Amer. | 211 | 89.1 | 0.9 | 0.0 | 10.0 | 175 | 87.4 | 0.6 | 0.0 | 12.0 |
| | Amer. Ind. | 3 | * | * | * | * | | | | | |
| | As./Pac. Isl. | 1 | * | * | * | * | 1 | * | * | * | * |
| | Hispanic | 53 | 83.0 | 1.9 | 0.0 | 15.1 | 36 | 69.4 | 8.3 | 0.0 | 22.2 |
| | White | 2 | * | * | * | * | 4 | * | * | * | * |
| | Econ. disadv. | 178 | 87.6 | 0.6 | 0.0 | 11.8 | 130 | 86.9 | 1.5 | 0.8 | 10.8 |
| | ELL Ever | 10 | 50.0 | 10.0 | 0.0 | 40.0 | 7 | * | * | * | * |
| | SWD | 39 | 82.1 | 0.0 | 0.0 | 17.9 | 45 | 80.0 | 4.4 | 2.2 | 13.3 |
| Waltrip HS | All students | 443 | 86.2 | 1.8 | 1.1 | 10.8 | 392 | 84.9 | 1.5 | 1.8 | 11.7 |
| | Afr. Amer. | 61 | 85.2 | 3.3 | 0.0 | 11.5 | 54 | 83.3 | 1.9 | 0.0 | 14.8 |
| | As./Pac. Isl. | 1 | * | * | * | * | 5 | * | * | * | * |
| | Hispanic | 335 | 84.8 | 1.8 | 1.2 | 12.2 | 257 | 83.3 | 1.9 | 1.9 | 12.8 |
| | Two or More | 2 | * | * | * | * | | | | | |
| | White | 44 | 97.7 | 0.0 | 2.3 | 0.0 | 76 | 90.8 | 0.0 | 2.6 | 6.6 |
| | Econ. disadv. | 309 | 87.7 | 1.0 | 0.6 | 10.7 | 236 | 86.9 | 1.7 | 0.4 | 11.0 |
| | ELL Ever | 44 | 61.4 | 6.8 | 2.3 | 29.5 | 35 | 62.9 | 5.7 | 0.0 | 31.4 |
| | SWD | 31 | 61.3 | 12.9 | 0.0 | 25.8 | 28 | 64.3 | 14.3 | 0.0 | 21.4 |

* Masked: n<10 Blanks: no data

2011 and 2012 Five-Year Graduation Summary: No Exclusions (Grades 9 - 12)

(for comparison to 2010 and prior years)

Standard Education Program

| District/Campus | Group | Class of 2011 | | | | | Class of 2010 | | | | |
|-----------------|---------------|---------------|-----------------|----------------|----------|--------------|---------------|-----------------|----------------|----------|--------------|
| | | Class | Graduation Rate | Continuer Rate | GED Rate | Dropout Rate | Class | Graduation Rate | Continuer Rate | GED Rate | Dropout Rate |
| Washington HS | All students | 193 | 81.9 | 2.6 | 1.6 | 14.0 | 224 | 83.0 | 3.1 | 0.0 | 13.8 |
| | Afr. Amer. | 153 | 84.3 | 2.0 | 0.7 | 13.1 | 184 | 84.2 | 1.6 | 0.0 | 14.1 |
| | Amer. Ind. | 3 | * | * | * | * | 1 | * | * | * | * |
| | As./Pac. Isl. | 2 | * | * | * | * | | | | | |
| | Hispanic | 29 | 75.9 | 3.4 | 6.9 | 13.8 | 31 | 71.0 | 12.9 | 0.0 | 16.1 |
| | Two or More | 1 | * | * | * | * | | | | | |
| | White | 5 | * | * | * | * | 8 | * | * | * | * |
| | Econ. disadv. | 135 | 88.1 | 2.2 | 1.5 | 8.1 | 154 | 85.1 | 3.2 | 0.0 | 11.7 |
| | ELL Ever | 6 | * | * | * | * | 10 | 70.0 | 20.0 | 0.0 | 10.0 |
| | SWD | 23 | 78.3 | 8.7 | 0.0 | 13.0 | 20 | 85.0 | 5.0 | 0.0 | 10.0 |
| Westbury HS | All students | 464 | 80.4 | 1.5 | 0.9 | 17.2 | 416 | 79.6 | 1.4 | 1.2 | 17.8 |
| | Afr. Amer. | 217 | 78.8 | 1.8 | 0.9 | 18.4 | 210 | 82.4 | 1.4 | 1.9 | 14.3 |
| | As./Pac. Isl. | 14 | 85.7 | 0.0 | 0.0 | 14.3 | 17 | 94.1 | 0.0 | 0.0 | 5.9 |
| | Hispanic | 219 | 81.7 | 1.4 | 0.9 | 16.0 | 170 | 73.5 | 1.8 | 0.6 | 24.1 |
| | Two or More | 1 | * | * | * | * | | | | | |
| | White | 13 | 76.9 | 0.0 | 0.0 | 23.1 | 19 | 89.5 | 0.0 | 0.0 | 10.5 |
| | Econ. disadv. | 338 | 80.5 | 1.8 | 0.6 | 17.2 | 268 | 86.6 | 1.9 | 1.1 | 10.4 |
| | ELL Ever | 79 | 70.9 | 2.5 | 0.0 | 26.6 | 57 | 57.9 | 3.5 | 0.0 | 38.6 |
| | SWD | 50 | 52.0 | 12.0 | 0.0 | 36.0 | 47 | 61.7 | 4.3 | 0.0 | 34.0 |
| Westside HS | All students | 721 | 91.7 | 0.8 | 0.7 | 6.8 | 649 | 92.0 | 1.1 | 1.2 | 5.7 |
| | Afr. Amer. | 265 | 90.9 | 0.8 | 0.4 | 7.9 | 179 | 86.6 | 0.0 | 2.2 | 11.2 |
| | Amer. Ind. | 1 | * | * | * | * | 3 | * | * | * | * |
| | As./Pac. Isl. | 55 | 96.4 | 0.0 | 0.0 | 3.6 | 66 | 95.5 | 0.0 | 1.5 | 3.0 |
| | Hispanic | 214 | 89.3 | 0.5 | 0.5 | 9.8 | 201 | 92.5 | 2.5 | 0.5 | 4.5 |
| | Two or More | 6 | * | * | * | * | | | | | |
| | White | 179 | 94.4 | 1.7 | 1.7 | 2.2 | 200 | 95.0 | 1.0 | 1.0 | 3.0 |
| | Other | 1 | * | * | * | * | | | | | |
| | Econ. disadv. | 351 | 93.2 | 0.6 | 0.6 | 5.7 | 245 | 89.8 | 0.8 | 0.8 | 8.6 |
| | ELL Ever | 56 | 75.0 | 0.0 | 0.0 | 25.0 | 44 | 86.4 | 4.5 | 2.3 | 6.8 |
| SWD | 46 | 78.3 | 8.7 | 0.0 | 13.0 | 39 | 79.5 | 7.7 | 0.0 | 12.8 | |
| Wheatley HS | All students | 242 | 74.8 | 2.1 | 0.8 | 22.3 | 274 | 81.0 | 3.6 | 0.0 | 15.3 |
| | Afr. Amer. | 171 | 74.9 | 2.9 | 0.6 | 21.6 | 184 | 83.2 | 2.2 | 0.0 | 14.7 |
| | Amer. Ind. | 1 | * | * | * | * | | | | | |
| | As./Pac. Isl. | | | | | | 1 | * | * | * | * |
| | Hispanic | 70 | 74.3 | 0.0 | 1.4 | 24.3 | 88 | 77.3 | 5.7 | 0.0 | 17.0 |
| | White | | | | | | 1 | * | * | * | * |
| | Econ. disadv. | 183 | 80.3 | 1.6 | 0.5 | 17.5 | 228 | 86.8 | 4.4 | 0.0 | 8.8 |
| | ELL Ever | 27 | 66.7 | 14.8 | 0.0 | 18.5 | 29 | 62.1 | 17.2 | 0.0 | 20.7 |
| | SWD | 38 | 68.4 | 2.6 | 0.0 | 28.9 | 56 | 67.9 | 12.5 | 0.0 | 19.6 |

* Masked: n<10 Blanks: no data

2011 and 2012 Five-Year Graduation Summary: No Exclusions (Grades 9 - 12)
(for comparison to 2010 and prior years)
Standard Education Program

| District/Campus | Group | Class of 2011 | | | | | Class of 2010 | | | | |
|-----------------|---------------|---------------|-----------------|----------------|----------|--------------|---------------|-----------------|----------------|----------|--------------|
| | | Class | Graduation Rate | Continuer Rate | GED Rate | Dropout Rate | Class | Graduation Rate | Continuer Rate | GED Rate | Dropout Rate |
| Worthing HS | All students | 270 | 81.1 | 0.7 | 0.0 | 18.1 | 261 | 77.8 | 2.7 | 0.4 | 19.2 |
| | Afr. Amer. | 256 | 82.4 | 0.8 | 0.0 | 16.8 | 239 | 78.2 | 2.5 | 0.4 | 18.8 |
| | Amer. Ind. | | | | | | 1 | * | * | * | * |
| | As./Pac. Isl. | | | | | | 1 | * | * | * | * |
| | Hispanic | 12 | 58.3 | 0.0 | 0.0 | 41.7 | 20 | 75.0 | 5.0 | 0.0 | 20.0 |
| | Two or More | 1 | * | * | * | * | | | | | |
| | White | 1 | * | * | * | * | | | | | |
| | Econ. disadv. | 187 | 82.4 | 1.1 | 0.0 | 16.6 | 181 | 84.5 | 1.7 | 0.6 | 13.3 |
| | ELL Ever | 3 | * | * | * | * | 6 | * | * | * | * |
| | SWD | 50 | 66.0 | 2.0 | 0.0 | 32.0 | 46 | 76.1 | 4.3 | 0.0 | 19.6 |
| Yates HS | All students | 359 | 80.8 | 0.3 | 0.8 | 18.1 | 287 | 76.3 | 1.0 | 0.3 | 22.3 |
| | Afr. Amer. | 331 | 81.0 | 0.3 | 0.9 | 17.8 | 265 | 77.4 | 0.4 | 0.0 | 22.3 |
| | As./Pac. Isl. | 3 | * | * | * | * | 1 | * | * | * | * |
| | Hispanic | 22 | 81.8 | 0.0 | 0.0 | 18.2 | 20 | 65.0 | 10.0 | 5.0 | 20.0 |
| | White | 3 | * | * | * | * | 1 | * | * | * | * |
| | Econ. disadv. | 223 | 82.5 | 0.4 | 0.0 | 17.0 | 133 | 72.9 | 1.5 | 0.8 | 24.8 |
| | ELL Ever | 8 | * | * | * | * | 10 | 60.0 | 20.0 | 10.0 | 10.0 |
| | SWD | 71 | 70.4 | 1.4 | 2.8 | 25.4 | 57 | 59.6 | 5.3 | 0.0 | 35.1 |

* Masked: n<10 Blanks: no data

2011 and 2012 Five-Year Graduation Summary: No Exclusions (Grades 9 - 12)

(for comparison to 2010 and prior years)

Alternative Education Program or Not Rated

| District/Campus | Group | Class of 2011 | | | | | Class of 2010 | | | | |
|-----------------------------|---------------|---------------|-----------------|----------------|----------|--------------|---------------|-----------------|----------------|----------|--------------|
| | | Class | Graduation Rate | Continuer Rate | GED Rate | Dropout Rate | Class | Graduation Rate | Continuer Rate | GED Rate | Dropout Rate |
| Beechnut Academy | All students | | | | | | 1 | * | * | * | * |
| | Afr. Amer. | | | | | | 1 | * | * | * | * |
| | Econ. disadv. | | | | | | 1 | * | * | * | * |
| CLC HS/DeVry Acad. (closed) | All students | | | | | | 137 | 57.7 | 0.0 | 2.2 | 40.1 |
| | Afr. Amer. | | | | | | 72 | 44.4 | 0.0 | 1.4 | 54.2 |
| | Hispanic | | | | | | 64 | 73.4 | 0.0 | 3.1 | 23.4 |
| | White | | | | | | 1 | * | * | * | * |
| | Econ. disadv. | | | | | | 96 | 64.6 | 0.0 | 2.1 | 33.3 |
| | ELL Ever | | | | | | 6 | * | * | * | * |
| | SWD | | | | | | 1 | * | * | * | * |
| Community Services | All students | 45 | 2.2 | 0.0 | 26.7 | 71.1 | 62 | 1.6 | 0.0 | 32.3 | 66.1 |
| | Afr. Amer. | 15 | 0.0 | 0.0 | 20.0 | 80.0 | 23 | 0.0 | 0.0 | 30.4 | 69.6 |
| | Hispanic | 20 | 5.0 | 0.0 | 25.0 | 70.0 | 21 | 0.0 | 0.0 | 33.3 | 66.7 |
| | White | 9 | * | * | * | * | 18 | 5.6 | 0.0 | 33.3 | 61.1 |
| | Econ. disadv. | 7 | * | * | * | * | 11 | 0.0 | 0.0 | 27.3 | 72.7 |
| | ELL Ever | 5 | * | * | * | * | 7 | * | * | * | * |
| | SWD | 11 | 9.1 | 0.0 | 27.3 | 63.6 | 11 | 9.1 | 0.0 | 9.1 | 81.8 |
| Harper | All students | 12 | 33.3 | 0.0 | 0.0 | 66.7 | 15 | 26.7 | 6.7 | 6.7 | 60.0 |
| | Afr. Amer. | 4 | * | * | * | * | 10 | 40.0 | 0.0 | 10.0 | 50.0 |
| | Hispanic | 6 | * | * | * | * | 5 | * | * | * | * |
| | White | 2 | * | * | * | * | | | | | |
| | Econ. disadv. | 10 | 30.0 | 0.0 | 0.0 | 70.0 | 8 | * | * | * | * |
| | ELL Ever | 3 | * | * | * | * | 1 | * | * | * | * |
| | SWD | 12 | 33.3 | 0.0 | 0.0 | 66.7 | 14 | 28.6 | 0.0 | 7.1 | 64.3 |
| HCC Life Skills | All students | 13 | 69.2 | 30.8 | 0.0 | 0.0 | 12 | 75.0 | 25.0 | 0.0 | 0.0 |
| | Afr. Amer. | 5 | * | * | * | * | 5 | * | * | * | * |
| | As./Pac. Isl. | 1 | * | * | * | * | 1 | * | * | * | * |
| | Hispanic | 7 | * | * | * | * | 6 | * | * | * | * |
| | Econ. disadv. | 11 | 63.6 | 36.4 | 0.0 | 0.0 | 12 | 75.0 | 25.0 | 0.0 | 0.0 |
| | ELL Ever | 6 | * | * | * | * | 4 | * | * | * | * |
| | SWD | 13 | 69.2 | 30.8 | 0.0 | 0.0 | 12 | 75.0 | 25.0 | 0.0 | 0.0 |
| Liberty HS | All students | 80 | 2.5 | 63.8 | 1.3 | 32.5 | 90 | 7.8 | 41.1 | 0.0 | 51.1 |
| | Afr. Amer. | 5 | * | * | * | * | 4 | * | * | * | * |
| | As./Pac. Isl. | 3 | * | * | * | * | 2 | * | * | * | * |
| | Hispanic | 72 | 2.8 | 61.1 | 1.4 | 34.7 | 83 | 7.2 | 38.6 | 0.0 | 54.2 |
| | White | | | | | | 1 | * | * | * | * |
| | Econ. disadv. | 57 | 1.8 | 66.7 | 1.8 | 29.8 | 69 | 7.2 | 47.8 | 0.0 | 44.9 |
| | ELL Ever | 80 | 2.5 | 63.8 | 1.3 | 32.5 | 85 | 8.2 | 41.2 | 0.0 | 50.6 |
| | SWD | 2 | * | * | * | * | 1 | * | * | * | * |

* Masked: n<10 Blanks: no data

2011 and 2012 Five-Year Graduation Summary: No Exclusions (Grades 9 - 12)
(for comparison to 2010 and prior years)
Alternative Education Program or Not Rated

| District/Campus | Group | Class of 2011 | | | | | Class of 2010 | | | | |
|-----------------|---------------|---------------|-----------------|----------------|----------|--------------|---------------|-----------------|----------------|----------|--------------|
| | | Class | Graduation Rate | Continuer Rate | GED Rate | Dropout Rate | Class | Graduation Rate | Continuer Rate | GED Rate | Dropout Rate |
| REACH HS | All students | 168 | 33.9 | 7.7 | 3.6 | 54.8 | 202 | 37.1 | 11.9 | 0.5 | 50.5 |
| | Afr. Amer. | 47 | 25.5 | 6.4 | 6.4 | 61.7 | 61 | 34.4 | 9.8 | 0.0 | 55.7 |
| | Amer. Ind. | | | | | | 1 | * | * | * | * |
| | As./Pac. Isl. | | | | | | 1 | * | * | * | * |
| | Hispanic | 118 | 37.3 | 8.5 | 2.5 | 51.7 | 136 | 36.8 | 13.2 | 0.7 | 49.3 |
| | White | 3 | * | * | * | * | 3 | * | * | * | * |
| | Econ. disadv. | 120 | 42.5 | 5.0 | 2.5 | 50.0 | 127 | 44.1 | 11.0 | 0.8 | 44.1 |
| | ELL Ever | 25 | 12.0 | 20.0 | 0.0 | 68.0 | 36 | 27.8 | 16.7 | 0.0 | 55.6 |
| | SWD | 31 | 35.5 | 3.2 | 3.2 | 58.1 | 40 | 45.0 | 5.0 | 0.0 | 50.0 |
| SOAR | All students | | | | | | 5 | * | * | * | * |
| | Afr. Amer. | | | | | | 3 | * | * | * | * |
| | Hispanic | | | | | | 1 | * | * | * | * |
| | White | | | | | | 1 | * | * | * | * |
| | Econ. disadv. | | | | | | 2 | * | * | * | * |
| | SWD | | | | | | 5 | * | * | * | * |

* Masked: n<10 Blanks: no data

2012 Five-Year Graduation Summary: With Exclusions (Grades 9 - 12)*(for 2011 and subsequent years)***Standard Education Program**

| District/Campus | Group | Class of 2011 | | | | |
|-----------------|---------------|---------------|-----------------|----------------|----------|--------------|
| | | Class | Graduation Rate | Continuer Rate | GED Rate | Dropout Rate |
| HISD | All students | 10,988 | 85.3 | 1.6 | 1.0 | 12.1 |
| | Afr. Amer. | 3,560 | 82.9 | 1.3 | 0.9 | 14.9 |
| | Amer. Ind. | 18 | 83.3 | 0.0 | 0.0 | 16.7 |
| | Asian | 389 | 96.1 | 1.0 | 0.3 | 2.6 |
| | Hispanic | 5,850 | 84.4 | 2.0 | 0.9 | 12.6 |
| | Other | 4 | * | * | * | * |
| | Pac. Isl. | 48 | 93.8 | 4.2 | 0.0 | 2.1 |
| | Two or More | 58 | 91.4 | 0.0 | 1.7 | 6.9 |
| | White | 1,061 | 93.5 | 0.7 | 1.6 | 4.2 |
| | Econ. disadv. | 7,389 | 86.9 | 1.6 | 0.7 | 10.8 |
| | ELL Ever | 1,294 | 68.5 | 6.8 | 0.4 | 24.3 |
| | SWD | 1,080 | 74.6 | 5.9 | 0.7 | 18.7 |
| Austin HS | All students | 429 | 88.6 | 1.6 | 0.5 | 9.3 |
| | Afr. Amer. | 15 | 93.3 | 0.0 | 0.0 | 6.7 |
| | Amer. Ind. | 1 | * | * | * | * |
| | Asian | 1 | * | * | * | * |
| | Hispanic | 408 | 88.2 | 1.7 | 0.5 | 9.6 |
| | White | 4 | * | * | * | * |
| | Econ. disadv. | 384 | 90.1 | 1.3 | 0.5 | 8.1 |
| | ELL Ever | 85 | 76.5 | 3.5 | 0.0 | 20.0 |
| | SWD | 38 | 89.5 | 7.9 | 0.0 | 2.6 |
| Bellaire HS | All students | 766 | 93.2 | 0.4 | 0.8 | 5.6 |
| | Afr. Amer. | 99 | 86.9 | 0.0 | 2.0 | 11.1 |
| | Amer. Ind. | 3 | * | * | * | * |
| | Asian | 153 | 98.0 | 0.7 | 0.7 | 0.7 |
| | Hispanic | 219 | 89.0 | 0.5 | 0.5 | 10.0 |
| | Pac. Isl. | 3 | * | * | * | * |
| | Two or More | 24 | 91.7 | 0.0 | 0.0 | 8.3 |
| | White | 265 | 96.6 | 0.0 | 0.8 | 2.6 |
| | Econ. disadv. | 240 | 88.8 | 0.8 | 0.8 | 9.6 |
| | ELL Ever | 47 | 74.5 | 4.3 | 0.0 | 21.3 |
| | SWD | 36 | 83.3 | 8.3 | 2.8 | 5.6 |
| Carnegie HS | All students | 80 | 100.0 | 0.0 | 0.0 | 0.0 |
| | Afr. Amer. | 10 | 100.0 | 0.0 | 0.0 | 0.0 |
| | Asian | 7 | * | * | * | * |
| | Hispanic | 20 | 100.0 | 0.0 | 0.0 | 0.0 |
| | White | 43 | 100.0 | 0.0 | 0.0 | 0.0 |
| | Econ. disadv. | 11 | 100.0 | 0.0 | 0.0 | 0.0 |
| | SWD | 3 | * | * | * | * |

* Masked: n<10

2012 Five-Year Graduation Summary: With Exclusions (Grades 9 - 12)
(for 2011 and subsequent years)
Standard Education Program

| District/Campus | Group | Class of 2011 | | | | |
|-----------------|---------------|---------------|-----------------|----------------|----------|--------------|
| | | Class | Graduation Rate | Continuer Rate | GED Rate | Dropout Rate |
| Challenge HS | All students | 82 | 97.6 | 0.0 | 0.0 | 2.4 |
| | Afr. Amer. | 16 | 100.0 | 0.0 | 0.0 | 0.0 |
| | Asian | 2 | * | * | * | * |
| | Hispanic | 46 | 95.7 | 0.0 | 0.0 | 4.3 |
| | Two or More | 1 | * | * | * | * |
| | White | 17 | 100.0 | 0.0 | 0.0 | 0.0 |
| | Econ. disadv. | 48 | 100.0 | 0.0 | 0.0 | 0.0 |
| | ELL Ever | 1 | * | * | * | * |
| | SWD | 2 | * | * | * | * |
| Chavez HS | All students | 589 | 86.4 | 0.8 | 0.2 | 12.6 |
| | Afr. Amer. | 79 | 91.1 | 0.0 | 0.0 | 8.9 |
| | Asian | 19 | 78.9 | 5.3 | 0.0 | 15.8 |
| | Hispanic | 478 | 86.2 | 0.8 | 0.2 | 12.8 |
| | Other | 2 | * | * | * | * |
| | Two or More | 1 | * | * | * | * |
| | White | 10 | 80.0 | 0.0 | 0.0 | 20.0 |
| | Econ. disadv. | 480 | 89.4 | 0.8 | 0.2 | 9.6 |
| | ELL Ever | 90 | 73.3 | 2.2 | 0.0 | 24.4 |
| | SWD | 44 | 75.0 | 6.8 | 0.0 | 18.2 |
| Davis HS | All students | 358 | 94.1 | 2.5 | 0.3 | 3.1 |
| | Afr. Amer. | 26 | 88.5 | 3.8 | 0.0 | 7.7 |
| | Amer. Ind. | 1 | * | * | * | * |
| | Hispanic | 329 | 94.5 | 2.4 | 0.3 | 2.7 |
| | White | 2 | * | * | * | * |
| | Econ. disadv. | 331 | 95.2 | 2.4 | 0.3 | 2.1 |
| | ELL Ever | 54 | 92.6 | 5.6 | 0.0 | 1.9 |
| | SWD | 46 | 87.0 | 6.5 | 0.0 | 6.5 |
| DeBakey HS | All students | 210 | 100.0 | 0.0 | 0.0 | 0.0 |
| | Afr. Amer. | 48 | 100.0 | 0.0 | 0.0 | 0.0 |
| | Asian | 83 | 100.0 | 0.0 | 0.0 | 0.0 |
| | Hispanic | 61 | 100.0 | 0.0 | 0.0 | 0.0 |
| | Pac. Isl. | 1 | * | * | * | * |
| | Two or More | 2 | * | * | * | * |
| | White | 15 | 100.0 | 0.0 | 0.0 | 0.0 |
| | Econ. disadv. | 107 | 100.0 | 0.0 | 0.0 | 0.0 |

* Masked: n<10

2012 Five-Year Graduation Summary: With Exclusions (Grades 9 - 12)*(for 2011 and subsequent years)***Standard Education Program**

| District/Campus | Group | Class of 2011 | | | | |
|------------------|---------------|---------------|-----------------|----------------|----------|--------------|
| | | Class | Graduation Rate | Continuer Rate | GED Rate | Dropout Rate |
| Eastwood Academy | All students | 63 | 100.0 | 0.0 | 0.0 | 0.0 |
| | Afr. Amer. | 2 | * | * | * | * |
| | Asian | 1 | * | * | * | * |
| | Hispanic | 60 | 100.0 | 0.0 | 0.0 | 0.0 |
| | Econ. disadv. | 45 | 100.0 | 0.0 | 0.0 | 0.0 |
| | ELL Ever | 1 | * | * | * | * |
| Furr HS | All students | 186 | 94.1 | 1.1 | 0.5 | 4.3 |
| | Afr. Amer. | 45 | 88.9 | 4.4 | 0.0 | 6.7 |
| | Hispanic | 136 | 95.6 | 0.0 | 0.7 | 3.7 |
| | White | 5 | * | * | * | * |
| | Econ. disadv. | 172 | 94.8 | 1.2 | 0.6 | 3.5 |
| | ELL Ever | 33 | 90.9 | 0.0 | 0.0 | 9.1 |
| | SWD | 33 | 90.9 | 6.1 | 0.0 | 3.0 |
| HSLECJ | All students | 120 | 99.2 | 0.0 | 0.0 | 0.8 |
| | Afr. Amer. | 30 | 100.0 | 0.0 | 0.0 | 0.0 |
| | Hispanic | 84 | 100.0 | 0.0 | 0.0 | 0.0 |
| | Two or More | 2 | * | * | * | * |
| | White | 4 | * | * | * | * |
| | Econ. disadv. | 76 | 98.7 | 0.0 | 0.0 | 1.3 |
| | SWD | 2 | * | * | * | * |
| HSPVA | All students | 151 | 100.0 | 0.0 | 0.0 | 0.0 |
| | Afr. Amer. | 31 | 100.0 | 0.0 | 0.0 | 0.0 |
| | Asian | 3 | * | * | * | * |
| | Hispanic | 37 | 100.0 | 0.0 | 0.0 | 0.0 |
| | Two or More | 1 | * | * | * | * |
| | White | 79 | 100.0 | 0.0 | 0.0 | 0.0 |
| | Econ. disadv. | 32 | 100.0 | 0.0 | 0.0 | 0.0 |
| | ELL Ever | 2 | * | * | * | * |
| | SWD | 1 | * | * | * | * |
| Jones HS | All students | 158 | 72.2 | 3.2 | 0.0 | 24.7 |
| | Afr. Amer. | 113 | 77.0 | 0.9 | 0.0 | 22.1 |
| | Hispanic | 44 | 59.1 | 9.1 | 0.0 | 31.8 |
| | Pac. Isl. | 1 | * | * | * | * |
| | Econ. disadv. | 119 | 73.9 | 4.2 | 0.0 | 21.8 |
| | ELL Ever | 19 | 36.8 | 15.8 | 0.0 | 47.4 |
| | SWD | 26 | 69.2 | 7.7 | 0.0 | 23.1 |

* Masked: n<10

2012 Five-Year Graduation Summary: With Exclusions (Grades 9 - 12)*(for 2011 and subsequent years)***Standard Education Program**

| District/Campus | Group | Class of 2011 | | | | |
|-----------------|---------------|---------------|-----------------|----------------|----------|--------------|
| | | Class | Graduation Rate | Continuer Rate | GED Rate | Dropout Rate |
| Jordan HS | All students | 287 | 99.0 | 0.0 | 0.0 | 1.0 |
| | Afr. Amer. | 180 | 98.3 | 0.0 | 0.0 | 1.7 |
| | Asian | 1 | * | * | * | * |
| | Hispanic | 104 | 100.0 | 0.0 | 0.0 | 0.0 |
| | White | 2 | * | * | * | * |
| | Econ. disadv. | 218 | 99.1 | 0.0 | 0.0 | 0.9 |
| | ELL Ever | 12 | 100.0 | 0.0 | 0.0 | 0.0 |
| | SWD | 42 | 100.0 | 0.0 | 0.0 | 0.0 |
| Kashmere HS | All students | 121 | 83.5 | 0.0 | 0.8 | 15.7 |
| | Afr. Amer. | 111 | 83.8 | 0.0 | 0.0 | 16.2 |
| | Hispanic | 9 | * | * | * | * |
| | White | 1 | * | * | * | * |
| | Econ. disadv. | 90 | 86.7 | 0.0 | 1.1 | 12.2 |
| | ELL Ever | 2 | * | * | * | * |
| | SWD | 34 | 97.1 | 0.0 | 0.0 | 2.9 |
| Lamar HS | All students | 757 | 95.4 | 0.9 | 0.1 | 3.6 |
| | Afr. Amer. | 213 | 97.2 | 0.5 | 0.0 | 2.3 |
| | Amer. Ind. | 2 | * | * | * | * |
| | Asian | 3 | * | * | * | * |
| | Hispanic | 239 | 92.5 | 2.1 | 0.0 | 5.4 |
| | Pac. Isl. | 27 | 100.0 | 0.0 | 0.0 | 0.0 |
| | Two or More | 1 | * | * | * | * |
| | White | 272 | 96.0 | 0.4 | 0.4 | 3.3 |
| | Econ. disadv. | 326 | 93.9 | 1.5 | 0.0 | 4.6 |
| | ELL Ever | 33 | 75.8 | 9.1 | 0.0 | 15.2 |
| | SWD | 36 | 77.8 | 13.9 | 0.0 | 8.3 |
| Lee HS | All students | 318 | 80.5 | 0.3 | 0.9 | 18.2 |
| | Afr. Amer. | 48 | 83.3 | 0.0 | 4.2 | 12.5 |
| | Amer. Ind. | 1 | * | * | * | * |
| | Asian | 20 | 100.0 | 0.0 | 0.0 | 0.0 |
| | Hispanic | 232 | 78.0 | 0.4 | 0.0 | 21.6 |
| | Pac. Isl. | 2 | * | * | * | * |
| | Two or More | 1 | * | * | * | * |
| | White | 14 | 78.6 | 0.0 | 7.1 | 14.3 |
| | Econ. disadv. | 275 | 84.0 | 0.4 | 0.7 | 14.9 |
| | ELL Ever | 137 | 72.3 | 0.0 | 0.0 | 27.7 |
| | SWD | 34 | 82.4 | 0.0 | 0.0 | 17.6 |

* Masked: n<10

2012 Five-Year Graduation Summary: With Exclusions (Grades 9 - 12)*(for 2011 and subsequent years)***Standard Education Program**

| District/Campus | Group | Class of 2011 | | | | |
|-----------------|---------------|---------------|-----------------|----------------|----------|--------------|
| | | Class | Graduation Rate | Continuer Rate | GED Rate | Dropout Rate |
| Madison HS | All students | 520 | 88.5 | 1.2 | 1.0 | 9.4 |
| | Afr. Amer. | 264 | 89.4 | 1.1 | 1.5 | 8.0 |
| | Amer. Ind. | 1 | * | * | * | * |
| | Asian | 3 | * | * | * | * |
| | Hispanic | 246 | 87.4 | 1.2 | 0.4 | 11.0 |
| | Pac. Isl. | 1 | * | * | * | * |
| | Two or More | 4 | * | * | * | * |
| | White | 1 | * | * | * | * |
| | Econ. disadv. | 387 | 91.7 | 1.3 | 0.5 | 6.5 |
| | ELL Ever | 68 | 77.9 | 4.4 | 0.0 | 17.6 |
| | SWD | 56 | 82.1 | 5.4 | 0.0 | 12.5 |
| Milby HS | All students | 530 | 86.8 | 0.9 | 1.5 | 10.8 |
| | Afr. Amer. | 13 | 84.6 | 0.0 | 0.0 | 15.4 |
| | Amer. Ind. | 2 | * | * | * | * |
| | Asian | 4 | * | * | * | * |
| | Hispanic | 506 | 87.0 | 0.8 | 1.6 | 10.7 |
| | White | 5 | * | * | * | * |
| | Econ. disadv. | 412 | 89.1 | 0.7 | 1.7 | 8.5 |
| | ELL Ever | 91 | 75.8 | 2.2 | 1.1 | 20.9 |
| | SWD | 49 | 77.6 | 6.1 | 0.0 | 16.3 |
| Reagan HS | All students | 367 | 95.1 | 0.3 | 0.8 | 3.8 |
| | Afr. Amer. | 25 | 96.0 | 0.0 | 0.0 | 4.0 |
| | Asian | 2 | * | * | * | * |
| | Hispanic | 326 | 95.1 | 0.3 | 0.6 | 4.0 |
| | Two or More | 2 | * | * | * | * |
| | White | 12 | 91.7 | 0.0 | 8.3 | 0.0 |
| | Econ. disadv. | 281 | 97.2 | 0.0 | 0.7 | 2.1 |
| | ELL Ever | 32 | 81.3 | 3.1 | 0.0 | 15.6 |
| | SWD | 39 | 84.6 | 2.6 | 0.0 | 12.8 |
| Rogers, T. H. | All students | 2 | * | * | * | * |
| | Afr. Amer. | 1 | * | * | * | * |
| | Hispanic | 1 | * | * | * | * |
| | Econ. disadv. | 2 | * | * | * | * |
| | SWD | 2 | * | * | * | * |

* Masked: n<10

2012 Five-Year Graduation Summary: With Exclusions (Grades 9 - 12)*(for 2011 and subsequent years)***Standard Education Program**

| District/Campus | Group | Class of 2011 | | | | |
|-----------------|---------------|---------------|-----------------|----------------|----------|--------------|
| | | Class | Graduation Rate | Continuer Rate | GED Rate | Dropout Rate |
| Scarborough HS | All students | 160 | 86.9 | 1.9 | 1.9 | 9.4 |
| | Afr. Amer. | 56 | 89.3 | 1.8 | 1.8 | 7.1 |
| | Asian | 1 | * | * | * | * |
| | Hispanic | 92 | 84.8 | 1.1 | 2.2 | 12.0 |
| | White | 11 | 90.9 | 9.1 | 0.0 | 0.0 |
| | Econ. disadv. | 126 | 88.9 | 1.6 | 1.6 | 7.9 |
| | ELL Ever | 20 | 70.0 | 5.0 | 5.0 | 20.0 |
| | SWD | 26 | 80.8 | 11.5 | 0.0 | 7.7 |
| Sharpstown HS | All students | 227 | 82.8 | 1.8 | 0.4 | 15.0 |
| | Afr. Amer. | 64 | 71.9 | 1.6 | 0.0 | 26.6 |
| | Asian | 7 | * | * | * | * |
| | Hispanic | 147 | 87.8 | 1.4 | 0.0 | 10.9 |
| | Pac. Isl. | 2 | * | * | * | * |
| | White | 7 | * | * | * | * |
| | Econ. disadv. | 181 | 89.5 | 1.7 | 0.0 | 8.8 |
| | ELL Ever | 58 | 81.0 | 3.4 | 0.0 | 15.5 |
| SWD | 31 | 67.7 | 12.9 | 0.0 | 19.4 | |
| Sterling HS | All students | 259 | 90.3 | 1.2 | 0.0 | 8.5 |
| | Afr. Amer. | 204 | 92.2 | 1.0 | 0.0 | 6.9 |
| | Amer. Ind. | 1 | * | * | * | * |
| | Asian | 1 | * | * | * | * |
| | Hispanic | 52 | 84.6 | 1.9 | 0.0 | 13.5 |
| | White | 1 | * | * | * | * |
| | Econ. disadv. | 171 | 90.1 | 0.6 | 0.0 | 9.4 |
| | ELL Ever | 9 | * | * | * | * |
| SWD | 37 | 86.5 | 0.0 | 0.0 | 13.5 | |
| Waltrip HS | All students | 428 | 88.6 | 0.9 | 1.2 | 9.3 |
| | Afr. Amer. | 58 | 89.7 | 1.7 | 0.0 | 8.6 |
| | Asian | 1 | * | * | * | * |
| | Hispanic | 323 | 87.0 | 0.9 | 1.2 | 10.8 |
| | Two or More | 2 | * | * | * | * |
| | White | 44 | 97.7 | 0.0 | 2.3 | 0.0 |
| | Econ. disadv. | 304 | 88.8 | 1.0 | 0.7 | 9.5 |
| | ELL Ever | 40 | 65.0 | 2.5 | 2.5 | 30.0 |
| SWD | 29 | 65.5 | 13.8 | 0.0 | 20.7 | |

* Masked: n<10

2012 Five-Year Graduation Summary: With Exclusions (Grades 9 - 12)*(for 2011 and subsequent years)***Standard Education Program**

| District/Campus | Group | Class of 2011 | | | | |
|-----------------|---------------|---------------|-----------------|----------------|----------|--------------|
| | | Class | Graduation Rate | Continuer Rate | GED Rate | Dropout Rate |
| Washington HS | All students | 185 | 84.9 | 1.6 | 1.1 | 12.4 |
| | Afr. Amer. | 146 | 87.7 | 0.7 | 0.7 | 11.0 |
| | Amer. Ind. | 3 | * | * | * | * |
| | Hispanic | 28 | 78.6 | 3.6 | 3.6 | 14.3 |
| | Pac. Isl. | 2 | * | * | * | * |
| | Two or More | 1 | * | * | * | * |
| | White | 5 | * | * | * | * |
| | Econ. disadv. | 130 | 90.8 | 2.3 | 0.8 | 6.2 |
| | ELL Ever | 6 | * | * | * | * |
| | SWD | 22 | 77.3 | 9.1 | 0.0 | 13.6 |
| Westbury HS | All students | 455 | 81.3 | 1.3 | 0.9 | 16.5 |
| | Afr. Amer. | 213 | 80.3 | 1.9 | 0.9 | 16.9 |
| | Asian | 14 | 85.7 | 0.0 | 0.0 | 14.3 |
| | Hispanic | 215 | 82.3 | 0.9 | 0.9 | 15.8 |
| | Two or More | 1 | * | * | * | * |
| | White | 12 | 75.0 | 0.0 | 0.0 | 25.0 |
| | Econ. disadv. | 333 | 81.7 | 1.5 | 0.6 | 16.2 |
| | ELL Ever | 77 | 72.7 | 1.3 | 0.0 | 26.0 |
| | SWD | 50 | 52.0 | 12.0 | 0.0 | 36.0 |
| | Westside HS | All students | 705 | 92.6 | 0.9 | 0.7 |
| Afr. Amer. | | 260 | 91.5 | 0.8 | 0.4 | 7.3 |
| Amer. Ind. | | 1 | * | * | * | * |
| Asian | | 48 | 100.0 | 0.0 | 0.0 | 0.0 |
| Hispanic | | 208 | 90.4 | 0.5 | 0.5 | 8.7 |
| Other | | 1 | * | * | * | * |
| Pac. Isl. | | 4 | * | * | * | * |
| Two or More | | 6 | * | * | * | * |
| White | | 177 | 94.9 | 1.7 | 1.7 | 1.7 |
| Econ. disadv. | | 346 | 93.9 | 0.6 | 0.6 | 4.9 |
| ELL Ever | | 52 | 76.9 | 0.0 | 0.0 | 23.1 |
| SWD | | 44 | 79.5 | 9.1 | 0.0 | 11.4 |
| Wheatley HS | All students | 227 | 78.4 | 0.9 | 0.9 | 19.8 |
| | Afr. Amer. | 160 | 78.8 | 1.3 | 0.6 | 19.4 |
| | Amer. Ind. | 1 | * | * | * | * |
| | Hispanic | 66 | 77.3 | 0.0 | 1.5 | 21.2 |
| | Econ. disadv. | 174 | 82.8 | 1.1 | 0.6 | 15.5 |
| | ELL Ever | 20 | 80.0 | 5.0 | 0.0 | 15.0 |
| | SWD | 36 | 72.2 | 2.8 | 0.0 | 25.0 |

* Masked: n<10

2012 Five-Year Graduation Summary: With Exclusions (Grades 9 - 12)
(for 2011 and subsequent years)
Standard Education Program

| District/Campus | Group | Class of 2011 | | | | Dropout Rate |
|-----------------|---------------|---------------|-----------------|----------------|----------|--------------|
| | | Class | Graduation Rate | Continuer Rate | GED Rate | |
| Worthing HS | All students | 255 | 83.9 | 0.8 | 0.0 | 15.3 |
| | Afr. Amer. | 243 | 84.8 | 0.8 | 0.0 | 14.4 |
| | Hispanic | 11 | 63.6 | 0.0 | 0.0 | 36.4 |
| | Two or More | 1 | * | * | * | * |
| | Econ. disadv. | 177 | 84.7 | 1.1 | 0.0 | 14.1 |
| | ELL Ever | 3 | * | * | * | * |
| | SWD | 48 | 68.8 | 2.1 | 0.0 | 29.2 |
| Yates HS | All students | 347 | 82.1 | 0.3 | 0.9 | 16.7 |
| | Afr. Amer. | 319 | 82.4 | 0.3 | 0.9 | 16.3 |
| | Hispanic | 22 | 81.8 | 0.0 | 0.0 | 18.2 |
| | Pac. Isl. | 3 | * | * | * | * |
| | White | 3 | * | * | * | * |
| | Econ. disadv. | 217 | 83.9 | 0.5 | 0.0 | 15.7 |
| | ELL Ever | 8 | * | * | * | * |
| | SWD | 70 | 71.4 | 1.4 | 2.9 | 24.3 |

* Masked: n<10

2012 Five-Year Graduation Summary: With Exclusions (Grades 9 - 12)*(for 2011 and subsequent years)***Alternative Education Program or Not Rated**

| District/Campus | Group | Class of 2011 | | | | |
|--------------------|---------------|---------------|-----------------|----------------|----------|--------------|
| | | Class | Graduation Rate | Continuer Rate | GED Rate | Dropout Rate |
| Community Services | All students | 41 | 2.4 | 0.0 | 29.3 | 68.3 |
| | Afr. Amer. | 14 | 0.0 | 0.0 | 21.4 | 78.6 |
| | Hispanic | 18 | 5.6 | 0.0 | 27.8 | 66.7 |
| | Other | 1 | * | * | * | * |
| | White | 8 | * | * | * | * |
| | Econ. disadv. | 7 | * | * | * | * |
| | ELL Ever | 4 | * | * | * | * |
| | SWD | 11 | 9.1 | 0.0 | 27.3 | 63.6 |
| Harper | All students | 12 | 33.3 | 0.0 | 0.0 | 66.7 |
| | Afr. Amer. | 4 | * | * | * | * |
| | Hispanic | 6 | * | * | * | * |
| | White | 2 | * | * | * | * |
| | Econ. disadv. | 10 | 30.0 | 0.0 | 0.0 | 70.0 |
| | ELL Ever | 3 | * | * | * | * |
| | SWD | 12 | 33.3 | 0.0 | 0.0 | 66.7 |
| HCC Life Skills | All students | 13 | 69.2 | 30.8 | 0.0 | 0.0 |
| | Afr. Amer. | 5 | * | * | * | * |
| | Asian | 1 | * | * | * | * |
| | Hispanic | 7 | * | * | * | * |
| | Econ. disadv. | 11 | 63.6 | 36.4 | 0.0 | 0.0 |
| | ELL Ever | 6 | * | * | * | * |
| | SWD | 13 | 69.2 | 30.8 | 0.0 | 0.0 |
| Liberty HS | All students | 74 | 2.7 | 63.5 | 1.4 | 32.4 |
| | Afr. Amer. | 5 | * | * | * | * |
| | Asian | 3 | * | * | * | * |
| | Hispanic | 66 | 3.0 | 60.6 | 1.5 | 34.8 |
| | Econ. disadv. | 55 | 1.8 | 67.3 | 1.8 | 29.1 |
| | ELL Ever | 74 | 2.7 | 63.5 | 1.4 | 32.4 |
| | SWD | 1 | * | * | * | * |
| REACH HS | All students | 142 | 39.4 | 3.5 | 4.2 | 52.8 |
| | Afr. Amer. | 40 | 30.0 | 2.5 | 7.5 | 60.0 |
| | Hispanic | 100 | 43.0 | 4.0 | 3.0 | 50.0 |
| | White | 2 | * | * | * | * |
| | Econ. disadv. | 104 | 48.1 | 1.0 | 2.9 | 48.1 |
| | ELL Ever | 18 | 16.7 | 11.1 | 0.0 | 72.2 |
| | SWD | 25 | 44.0 | 0.0 | 4.0 | 52.0 |

* Masked: n<10